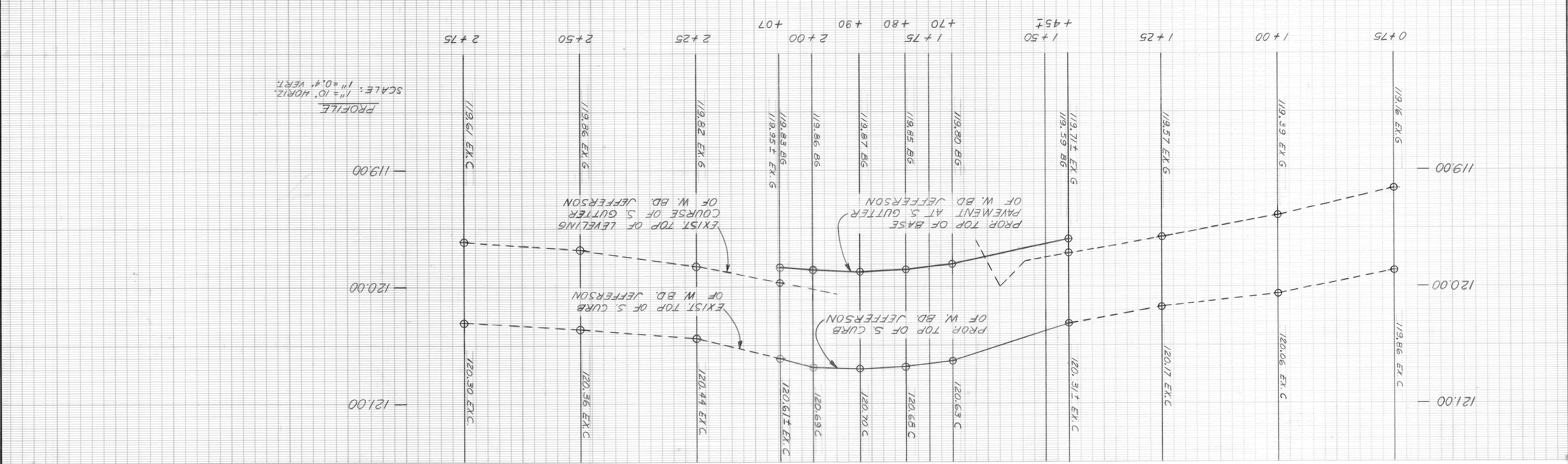


INDEX NO.	NO.
TOPIC NO.	ASSIGNMENT
CONTRACT NO.	
SHEET NO. OF SHEETS	1 OF 1
DATE	JULY, 1997

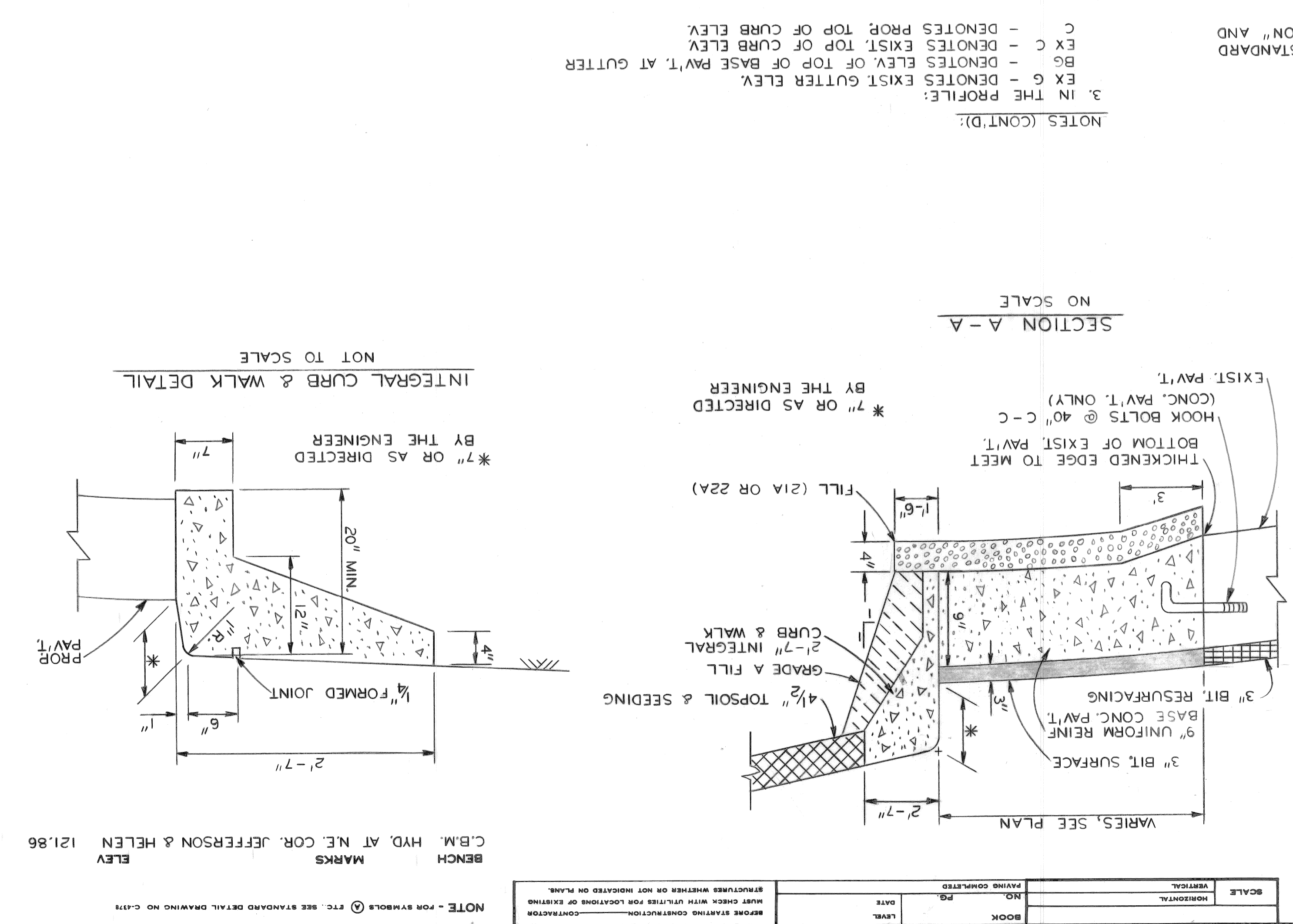
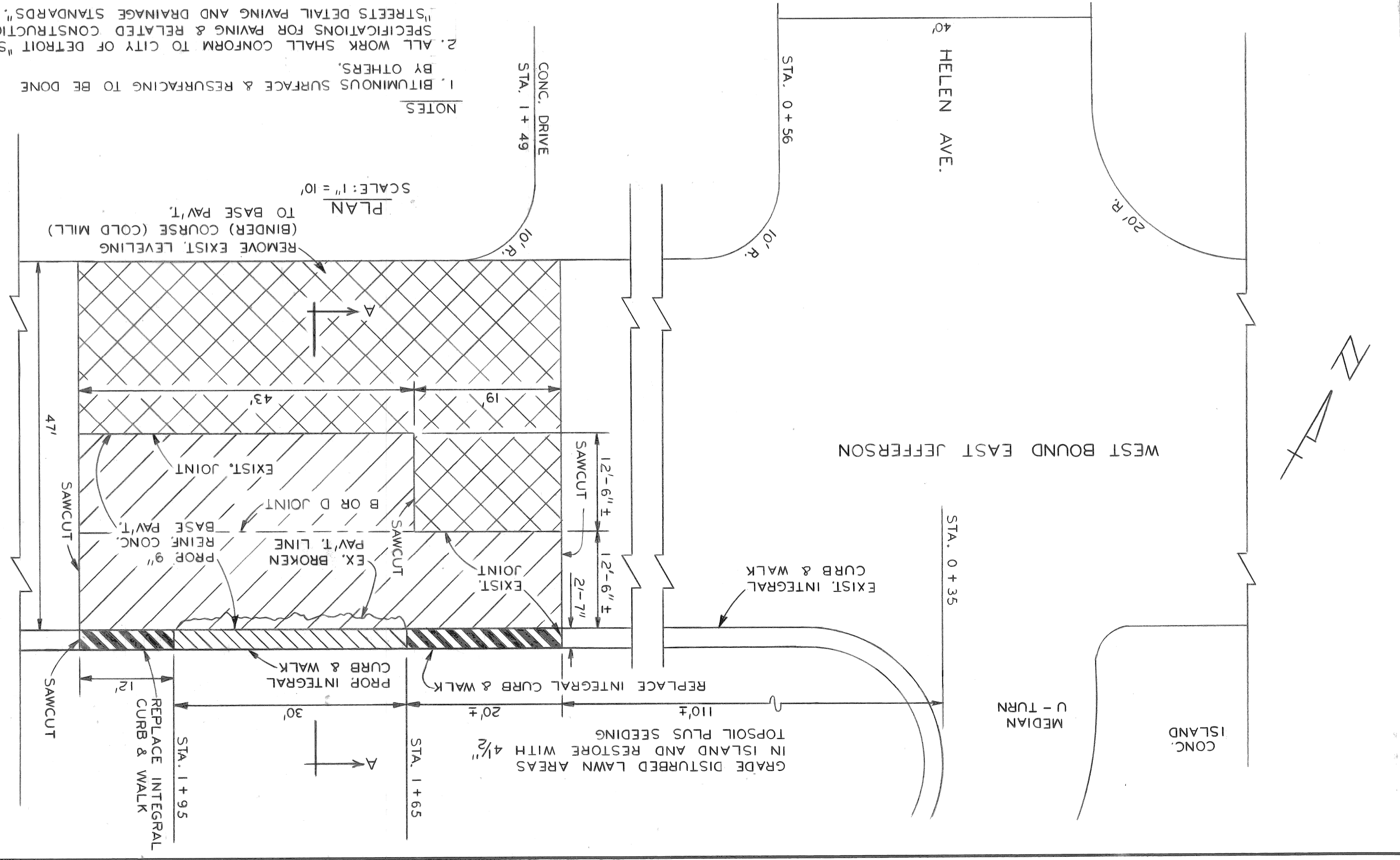
PAVEMENT AND INTEGRAL CURB AND WALK REPAIRS  
ON W. BD. E. JEFFERSON W. OF HELEN AVE.

CITY OF DETROIT  
CITY ENGINEERING DIVISION, D.R.W.  
BUREAU OF STREETS AND HIGHWAYS  
INCLUDED WITH E. JEFFERSON RESURFACING  
CONTRACT (WATER MAIN BREAK DAMAGE)

APPROVED BY	BY	AA.C.M.	AA.C.M.	PLAN
CHECKED BY	BY	N.W.	N.W.	GRADE
REVIEW	CHECK			ESTIMATE
				FINAL



NOTES (CONT'D):  
 1. BITUMINOUS SURFACE & RESURFACING TO BE DONE BY OTHERS.  
 2. ALL WORK SHALL CONFORM TO CITY OF DETROIT "STANDARD" SPECIFICATIONS FOR PAVING & RELATED CONSTRUCTION AND "STREETS DETAIL PAVING AND DRAINAGE STANDARDS".  
 3. IN THE PROFILE:  
 EX G - DENOTES EXIST. GUTTER ELEV.  
 EX C - DENOTES EXIST. TOP OF CURB ELEV.  
 BG - DENOTES ELEV. OF TOP OF BASE PAV'T. AT GUTTER  
 C - DENOTES PROP. TOP OF CURB ELEV.



NOTE - FOR SYMBOLS & ETC. SEE STANDARD DETAIL DRAWING NO. C-173  
 BENCH MARKS  
 C.B.M. HYD. AT N.E. COR. JEFFERSON & HELEN  
 ELEV. 121.86