

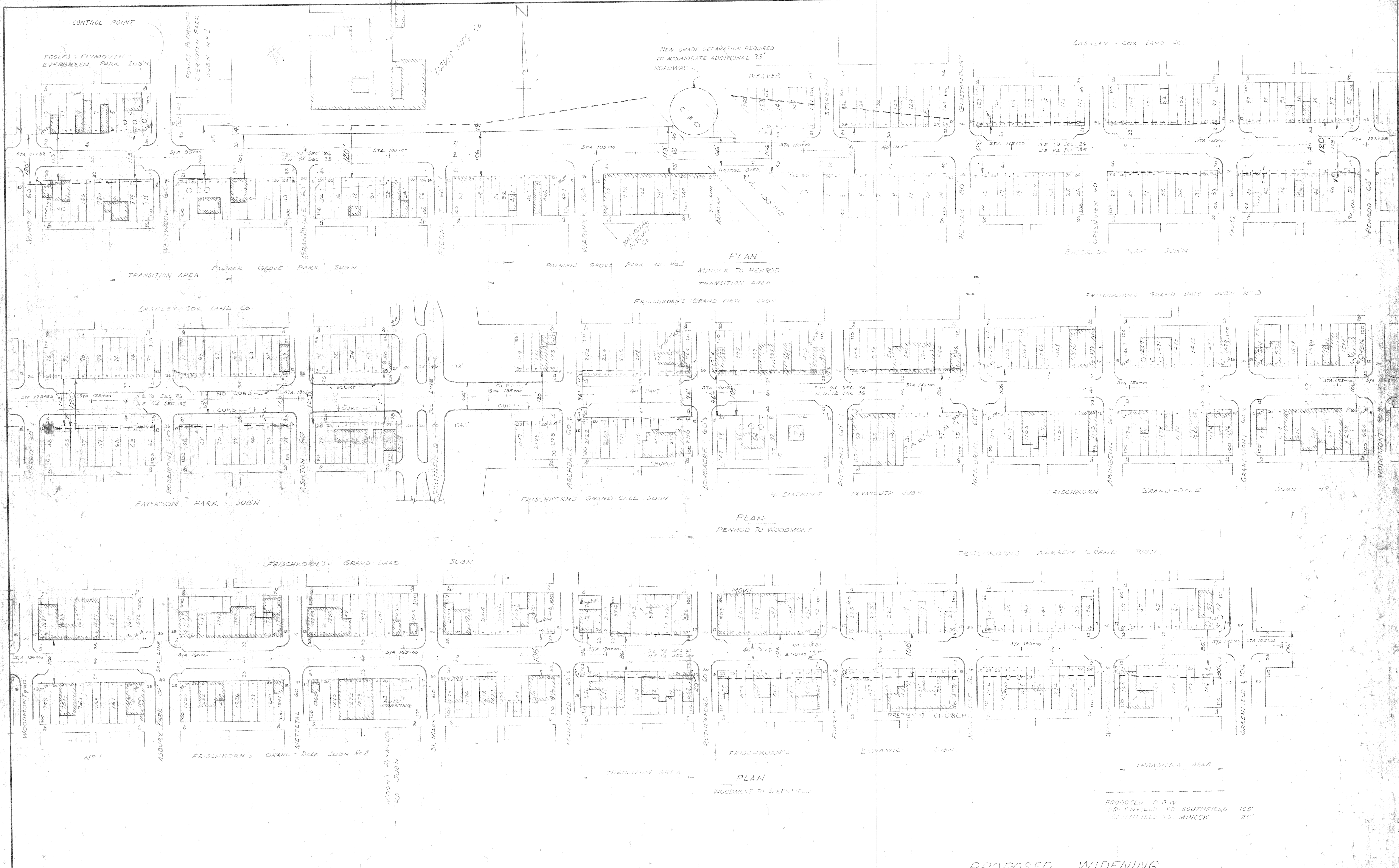
F					
E					
D					
C					
B					
A	CHANGED FROM 126' R.O.W. TO 120'	D.M.	M.J.W.	5/11/58	
DESCRIPTION		DRW.	CKD.	APR.	DATE
REVISIONS					

DESIGNED BY	APPROVED
DRAWN BY JOHN HAMPSHIRE	
TRACED BY	ENGINEER OF
CHECKED BY	EXPRESSWAY ENGINEER

CITY OF DETROIT
DEPARTMENT OF PUBLIC WORKS
HIGHWAY & EXPRESSWAY DIVISION

PROPOSED WIDENING		SHEET 2 OF 5
PLYMOUTH ROAD FROM WEST CITY LIMITS TO MINOCK.		
BOOK NO.	SCALE	DWG. NO. E-55
PAGE NO.	DATE 10/19/53	

751(T)

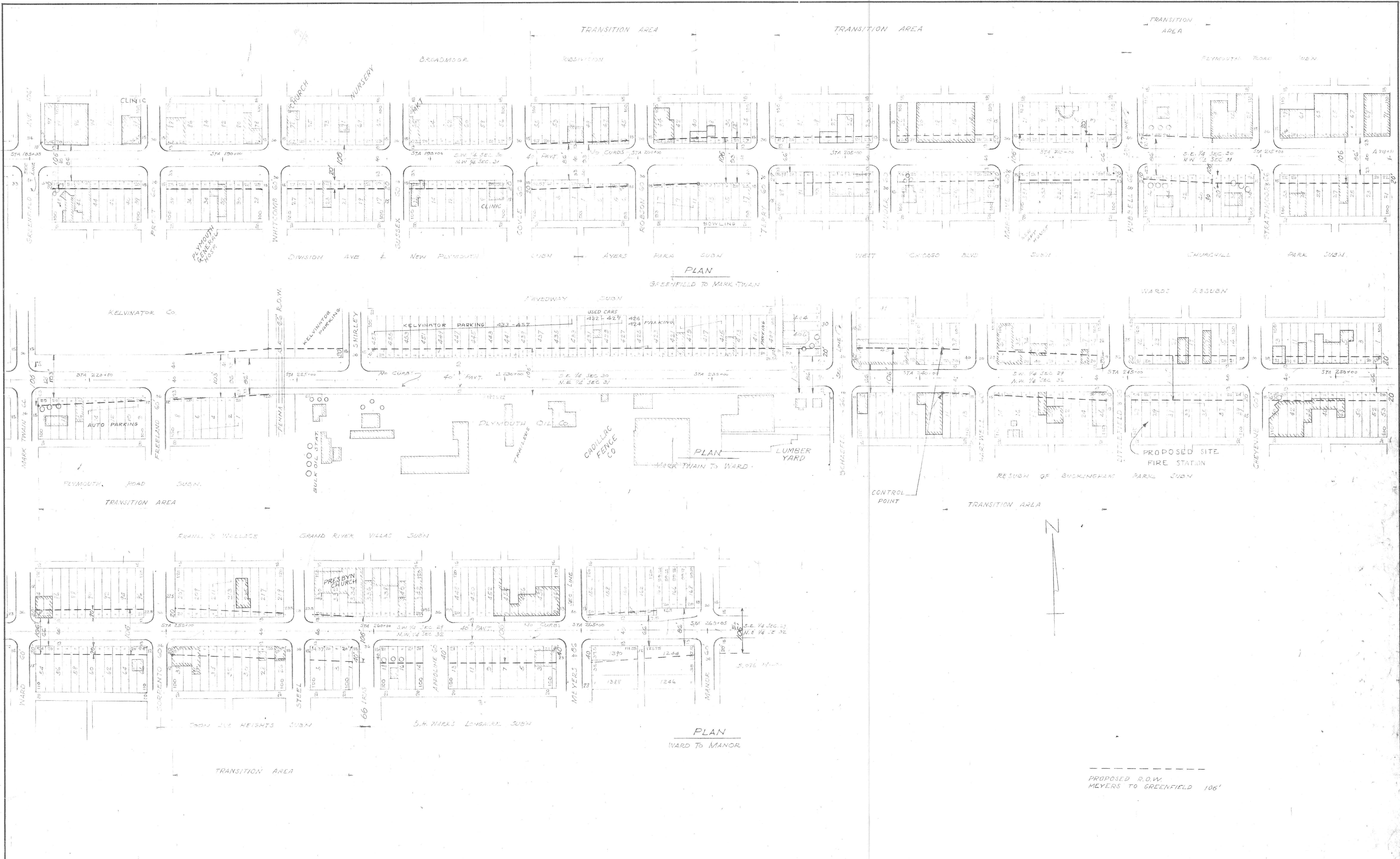


NOTED BY	DESCRIPTION	DRN	CHKD	APVD	DATE

REFERENCE DRAWINGS	DESIGNED BY	APPROVED:
	JOHN HAMPSHIRE	
	DRAWN BY	
	TR'CED BY	
	CHCKED BY	

CITY OF DETROIT
 DEPARTMENT OF PUBLIC WORKS
 HIGHWAY 4 EXPRESSWAY DIVISION

PROPOSED WIDENING PLYMOUTH ROAD FROM MINOCK TO GREENFIELD	
SHEET 3 OF 5 SHEETS	
JOB NO.	
DRWG NO. E-55	
DATE 10-19-53	



NOTED BY	DESCRIPTION	DRWN	CHKD	APYD	DATE
	REVISIONS				

REFERENCE DRAWINGS	DESIGNED BY	APPROVED:
	JOHN HAMPSHIRE	
	DRAWN BY	
	TRACED BY	
	CHECKED BY	

EXP.WY. ENGINEER

CITY OF DETROIT
 DEPARTMENT OF PUBLIC WORKS
 HIGHWAY & EXPRESSWAY DIVISION

PROPOSED WIDENING
 PLYMOUTH ROAD FROM GREENFIELD TO MANOR

SHEET 4 OF 5 SHEETS JOB No. DRWG No. E-55 DATE 10-19-53	7-56 (7)
--	----------