

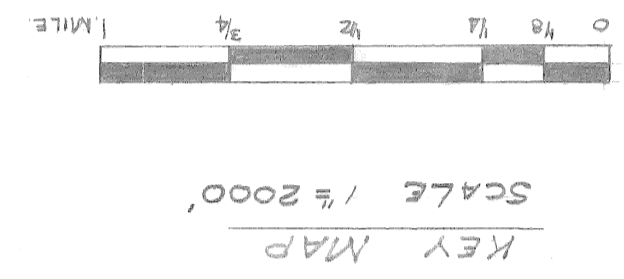
7-5e(7)

NOTED BY		DESIGNED BY	J. HAMPSHIRE	APPROVED:	
A	ADDITIONAL 120' CROSS-SECTION	DRAWN BY	J. HAMPSHIRE	EXPY ENGINEER	
B		TRACED BY			
C		CHECKED BY			
D					
E					
F					
G					
H					
I					
J					
K					
L					
M					
N					
O					
P					
Q					
R					
S					
T					
U					
V					
W					
X					
Y					
Z					
AA					
AB					
AC					
AD					
AE					
AF					
AG					
AH					
AI					
AJ					
AK					
AL					
AM					
AN					
AO					
AP					
AQ					
AR					
AS					
AT					
AU					
AV					
AW					
AX					
AY					
AZ					
BA					
BB					
BC					
BD					
BE					
BF					
BG					
BH					
BI					
BJ					
BK					
BL					
BM					
BN					
BO					
BP					
BQ					
BR					
BS					
BT					
BU					
BV					
BW					
BX					
BY					
BZ					
CA					
CB					
CC					
CD					
CE					
CF					
CG					
CH					
CI					
CJ					
CK					
CL					
CM					
CN					
CO					
CP					
CQ					
CR					
CS					
CT					
CU					
CV					
CW					
CX					
CY					
CZ					
DA					
DB					
DC					
DD					
DE					
DF					
DG					
DH					
DI					
DJ					
DK					
DL					
DM					
DN					
DO					
DP					
DQ					
DR					
DS					
DT					
DU					
DV					
DW					
DX					
DY					
DZ					
EA					
EB					
EC					
ED					
EE					
EF					
EG					
EH					
EI					
EJ					
EK					
EL					
EM					
EN					
EO					
EP					
EQ					
ER					
ES					
ET					
EU					
EV					
EW					
EX					
EY					
EZ					
FA					
FB					
FC					
FD					
FE					
FF					
FG					
FH					
FI					
FJ					
FK					
FL					
FM					
FN					
FO					
FP					
FQ					
FR					
FS					
FT					
FU					
FV					
FW					
FX					
FY					
FZ					
GA					
GB					
GC					
GD					
GE					
GF					
GG					
GH					
GI					
GJ					
GK					
GL					
GM					
GN					
GO					
GP					
GQ					
GR					
GS					
GT					
GU					
GV					
GW					
GX					
GY					
GA					

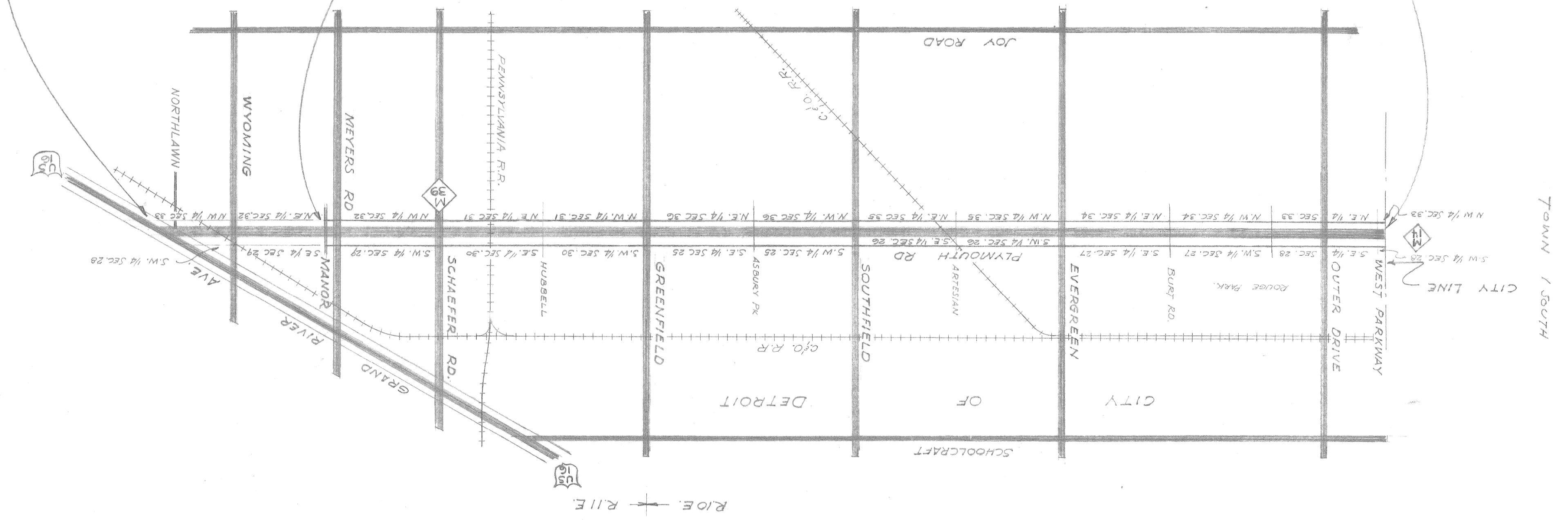
PROPOSED WIDENING OF PLYMOUTH RD.  
FROM WEST CITY LIMITS TO MANOR AVE.

CITY OF DETROIT  
DEPARTMENT OF PUBLIC WORKS  
HIGHWAY & EXPRESSWAY DIVISION

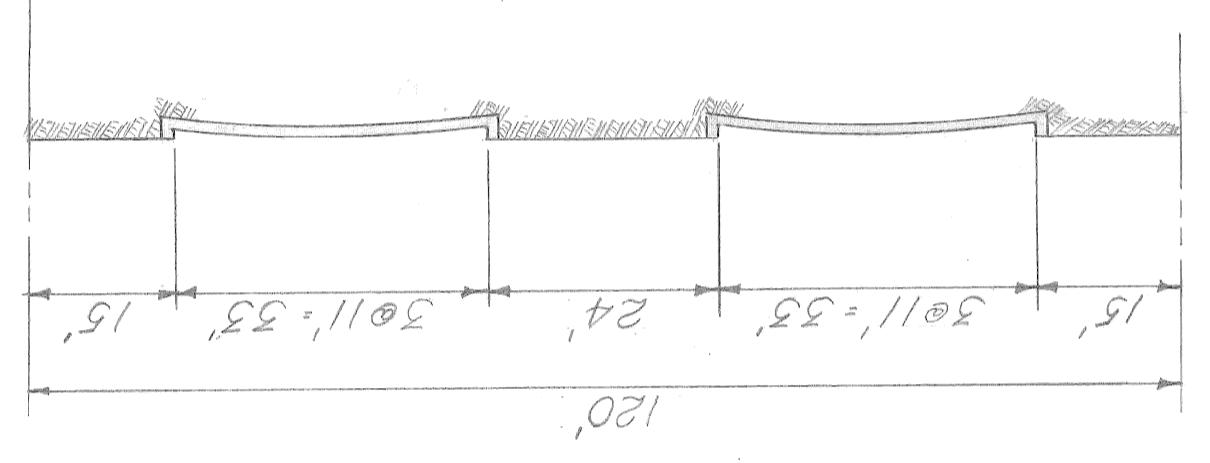
NOTE: NO CURBS EXCEPT AS SHOWN ON DRAWING FROM WEST CITY LINE TO MANOR. PAVEMENT 40' WIDE FROM MANOR TO MANOR. PROPERTY LINES FROM WEST CITY LINE TO MANOR VARIES.



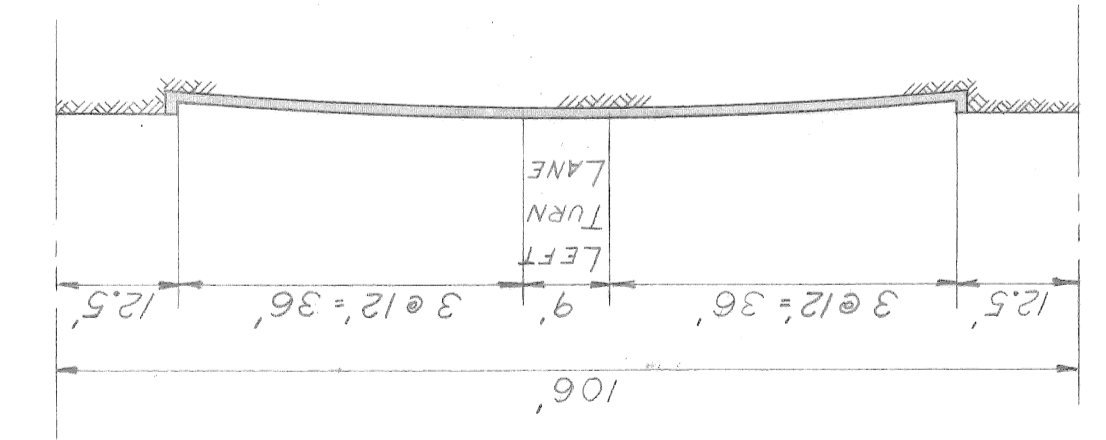
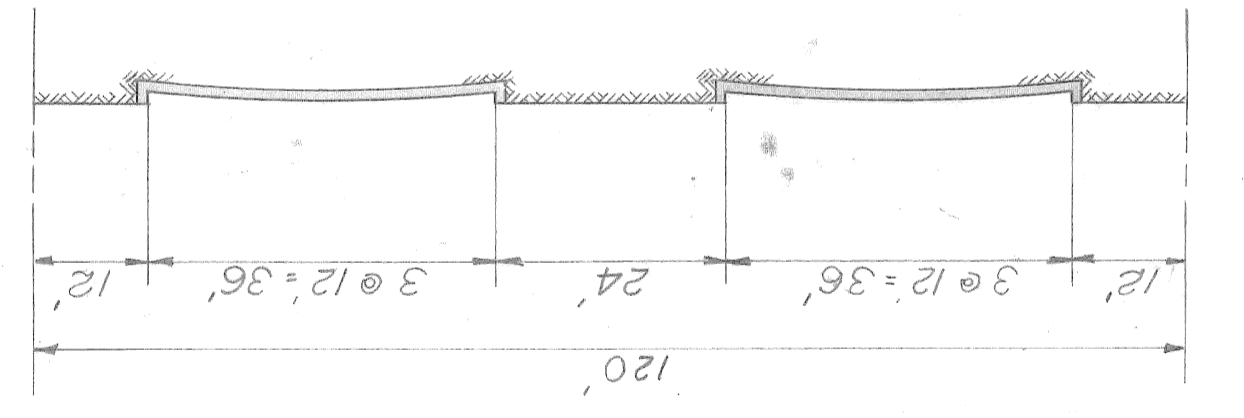
NOTE: CURBS FROM MANOR TO GRAND RIVER - PAVEMENT 56' WIDE FROM MANOR TO NORTH-NORTHWEST TO GRAND RIVER AVE. LAWN - PAVEMENT 66' WIDE FROM NORTHWEST TO GRAND RIVER AVE.



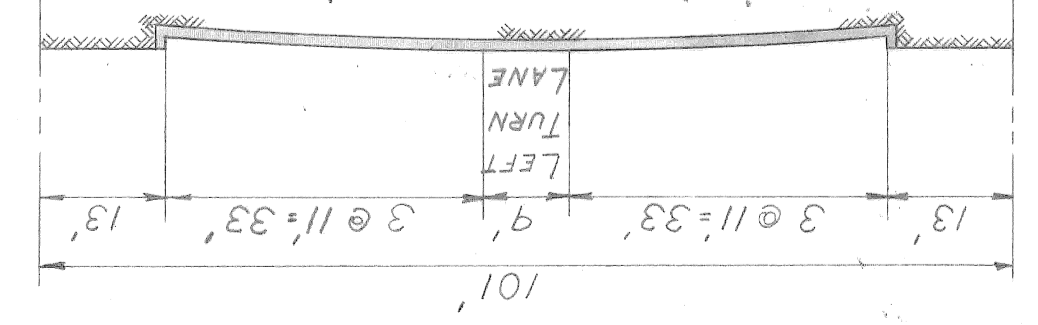
ALTERNATIVE PROPOSAL FOR 120' CROSS-SECTION



TYPICAL CROSS-SECTIONS SCALE: 1" = 20'



THIS 101' SECTION PROPOSED ONLY TO MAINTAIN EXISTING PROPERTY LINES BETWEEN KENTUCKY AND ALLEY EAST OF OHIO - DISTANCE OF 780 FEET.



DESIGNED BY	APPROVED
DRAWN BY JOHN HAMPSHIRE	ENGINEER OF
DATE	CHECKED BY
APR. 1953	EXPRESSWAY ENGINEER
CD. M.J.W.	
DRW. P.M.	
DESCRIPTION	
CHANGED FROM 1/26' R.O.W. TO 120'	

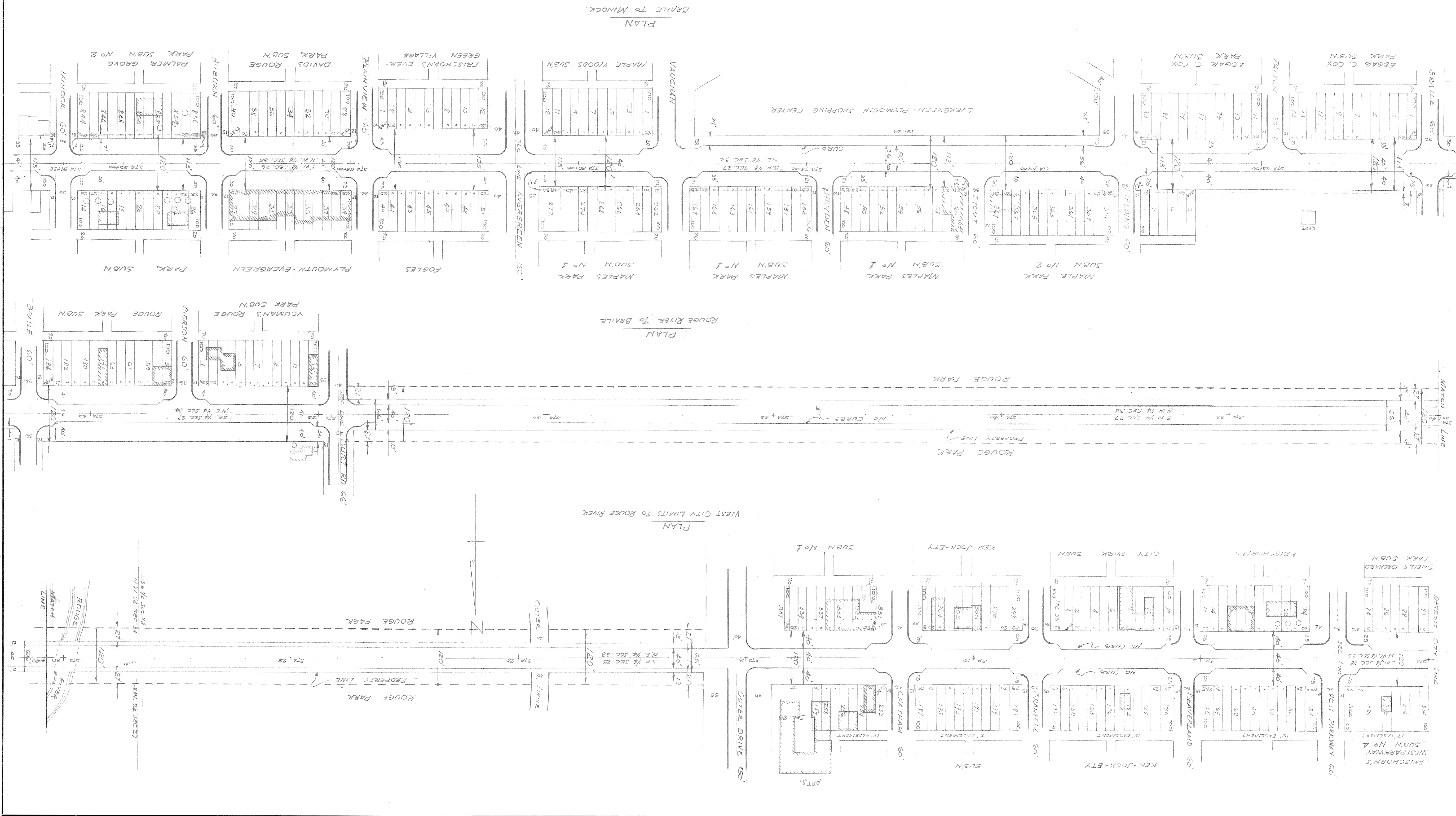
CITY OF DETROIT  
DEPARTMENT OF PUBLIC WORKS  
HIGHWAY & EXPRESSWAY DIVISION

BOOK NO.	SCALE	DATE
		10-19-53
DMG. NO. E-55		

PLYMOUTH ROAD FROM WEST CITY LIMITS TO MINOCK

PROPOSED WIDENING SHEET 2 OF 5

SCALE 1"=100'



7-54 (T)



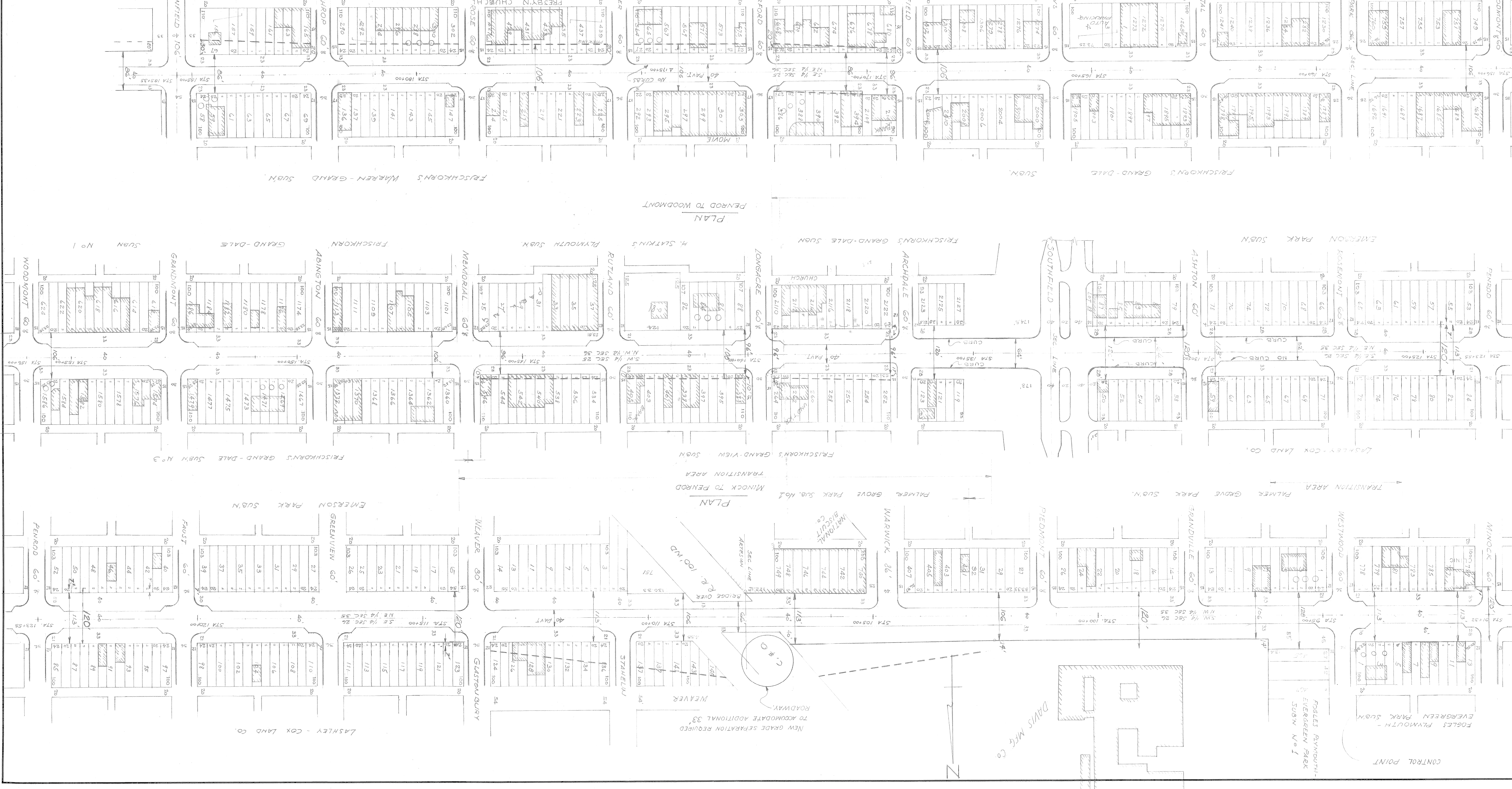
NOTED BY	REVISIONS	APPROVED:	DESIGNED BY	DRAWN BY	CHECKED BY	DATE	BY
	DESCRIPTION						
A	CHANGED FROM 12' B.O.W TO 120'	EMPVY, ENGINEER	JOHN HAMPBIRE			10-13-53	
B	ADJUSTED R.O.W @ PLYMOUTH						
C							
D							
E							
F							
G							

CITY OF DETROIT  
DEPARTMENT OF PUBLIC WORKS  
HIGHWAY & EXPRESSWAY DIVISION

PLYMOUTH ROAD FROM MINOCK TO GREENFIELD

PROPOSED WIDENING

SCALE 1"=100'



DATE 10-13-53  
DRAWING NO. E-55  
JOB NO.  
SHEET 5 OF 5 SHEETS







