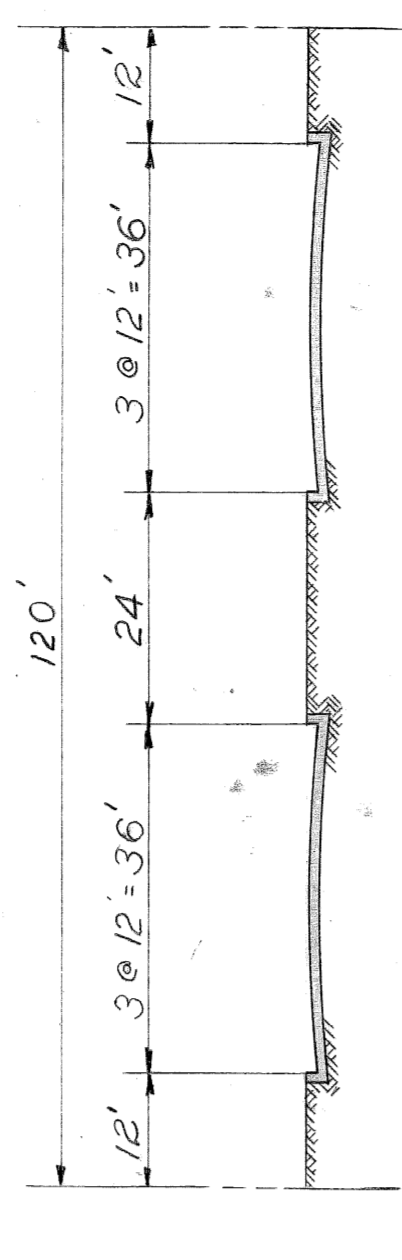
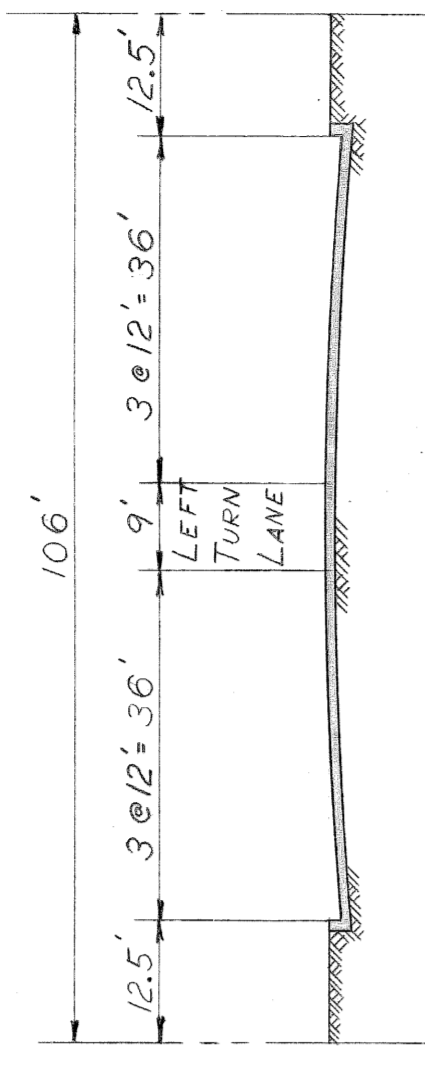
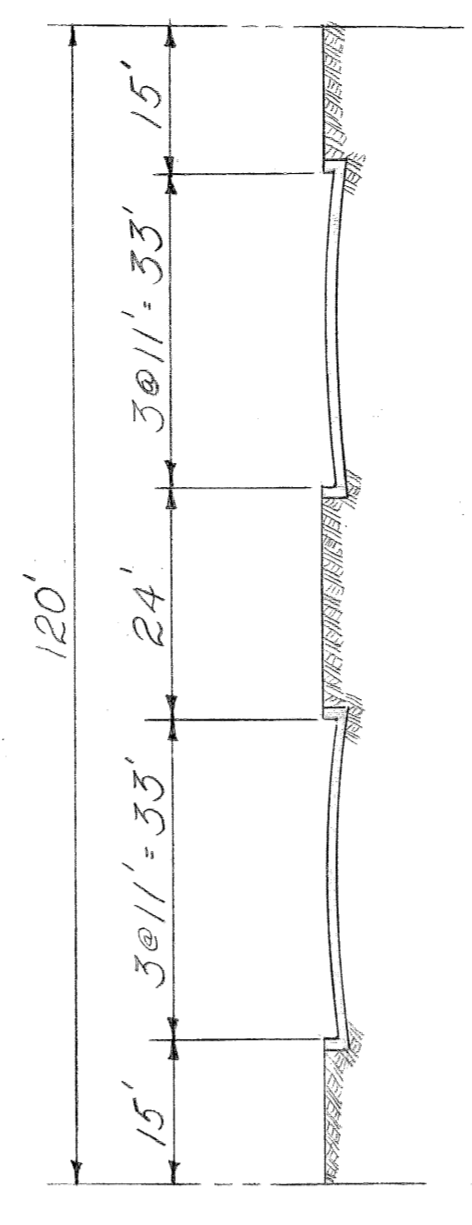


THIS 101' SECTION PROPOSED ONLY TO MAINTAIN EXISTING PROPERTY LINES BETWEEN KENTUCKY AND ALLEY EAST OF OHIO - DISTANCE OF 980 FEET.

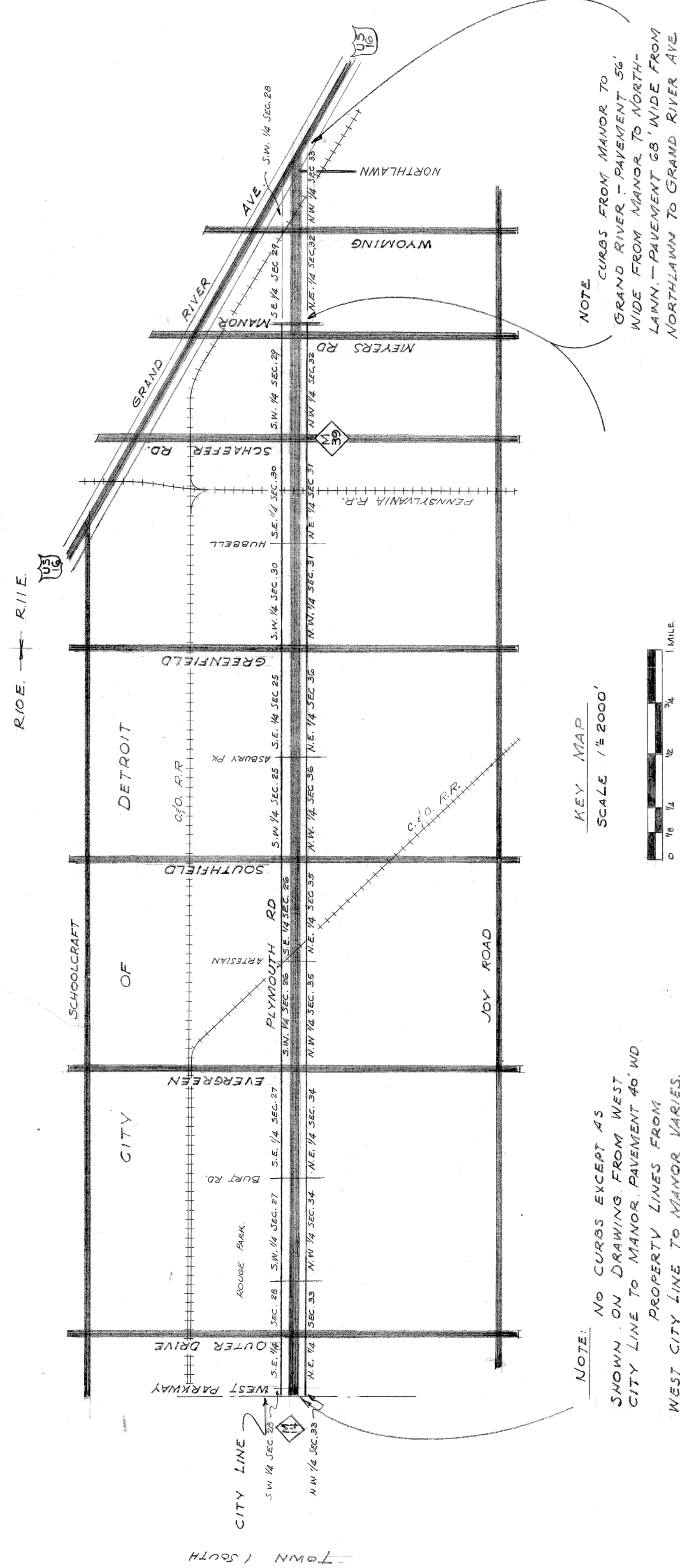


TYPICAL CROSS-SECTIONS
SCALE: 1" = 20'

SEE SHEETS 2 THROUGH 5 FOR PROPOSED R.O.W. WIDTH LOCATIONS.

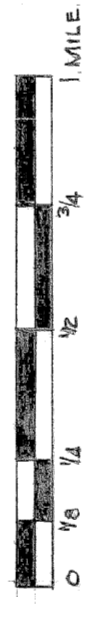


ALTERNATIVE PROPOSAL FOR 120' CROSS-SECTION

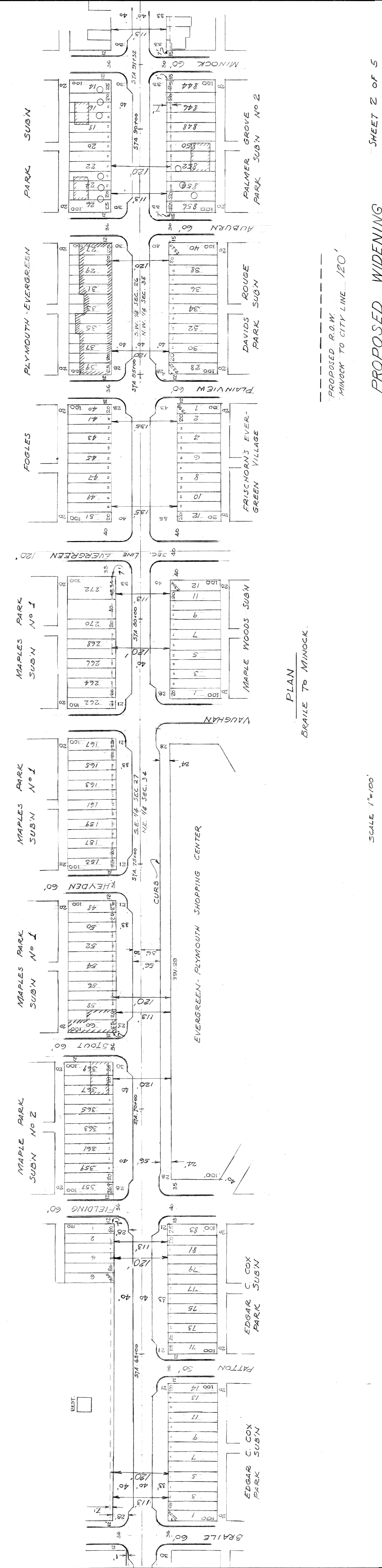
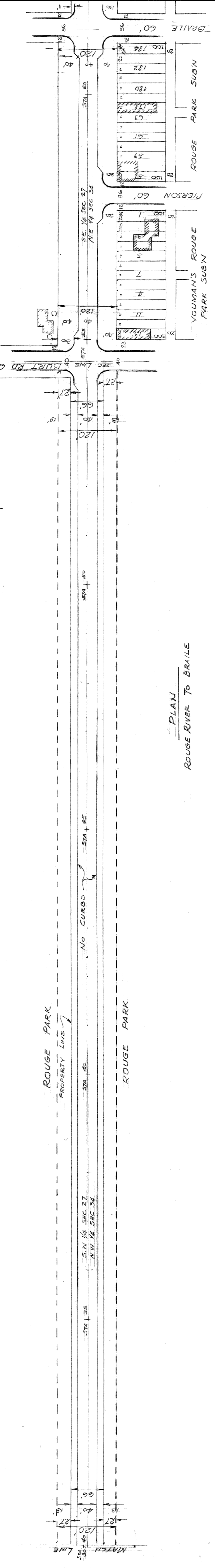
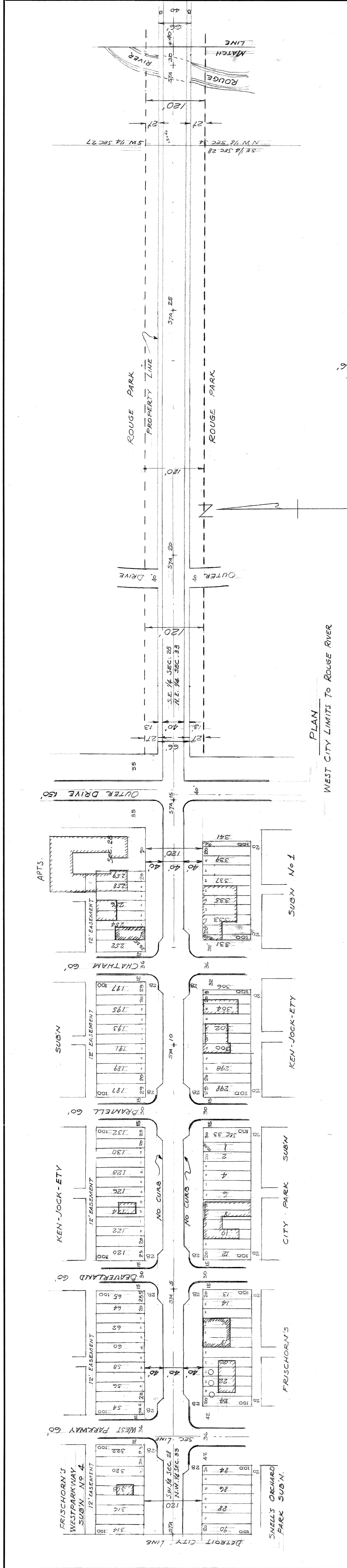


NOTE: NO CURBS EXCEPT AS SHOWN ON DRAWING FROM WEST CITY LINE TO MANOR. PAVEMENT 40' WID PROPERTY LINES FROM WEST CITY LINE TO MANOR VARIES.

KEY MAP
SCALE 1/8" = 2000'



CITY OF DETROIT DEPARTMENT OF PUBLIC WORKS HIGHWAY & EXPRESSWAY DIVISION		PROPOSED WIDENING OF PLYMOUTH RD. FROM WEST CITY LIMITS TO MANOR AVE.	
DESIGNED BY	J. HAMPSHIRE	APPROVED	
DRAWN BY			
TRACED BY			
CHECKED BY			EXP'Y ENGINEER
NOTED BY			
DESCRIPTION	REV. NO.	DATE	REVISIONS
A. ADDITIONAL LEG. CROSS-SECTION	1	5.7.58	
SHEET 1 OF 5 SHEETS			
JOB NO.			
DRWG NO. E-55			
DATE 11-13-53			



PROPOSED WIDENING

PLYMOUTH ROAD FROM WEST

CITY LIMITS TO MINOCK.

CITY OF DETROIT
DEPARTMENT OF PUBLIC WORKS
HIGHWAY & EXPRESSWAY DIVISION

SCALE 1"=100'

APPROVED

DESIGNED BY

DRAWN BY JOHN HAMPSHIRE

TRACED BY

CHECKED BY

DATE

APR. 1971

DRW.

CHKD.

DESCRIPTION

REVISIONS

BOOK NO.

SCALE

DATE 10-9-53

SHEET 2 OF 5

DWG. NO. E-55

PAGE NO.

DATE

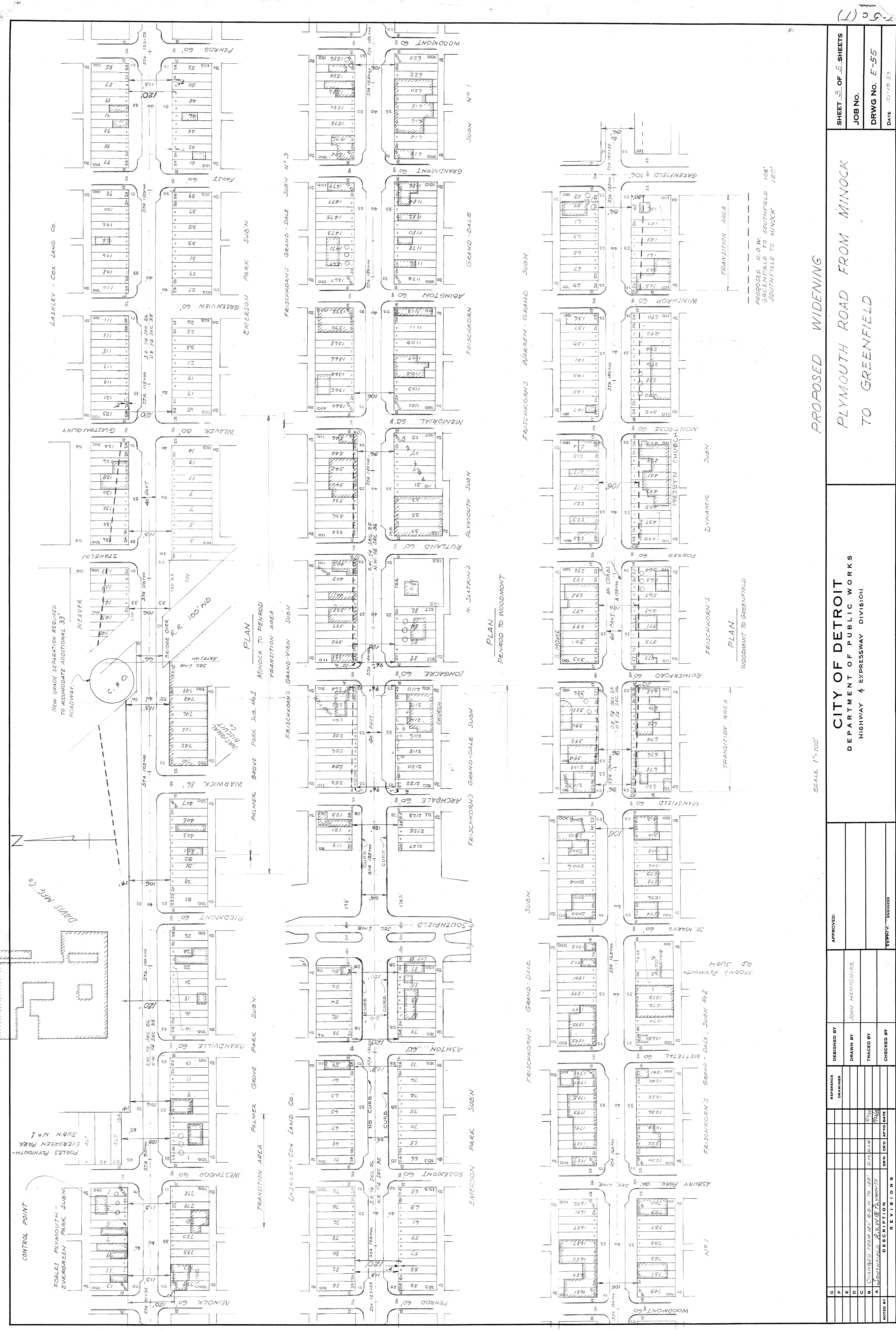
SCALE

DATE 10-9-53

PAGE NO.

SCALE

DATE



NEW GRADE SEPARATION REQUIRED TO ACCOMMODATE ADDITIONAL 33' ROADWAY.

R.R. 100' WD BRIDGE OVER

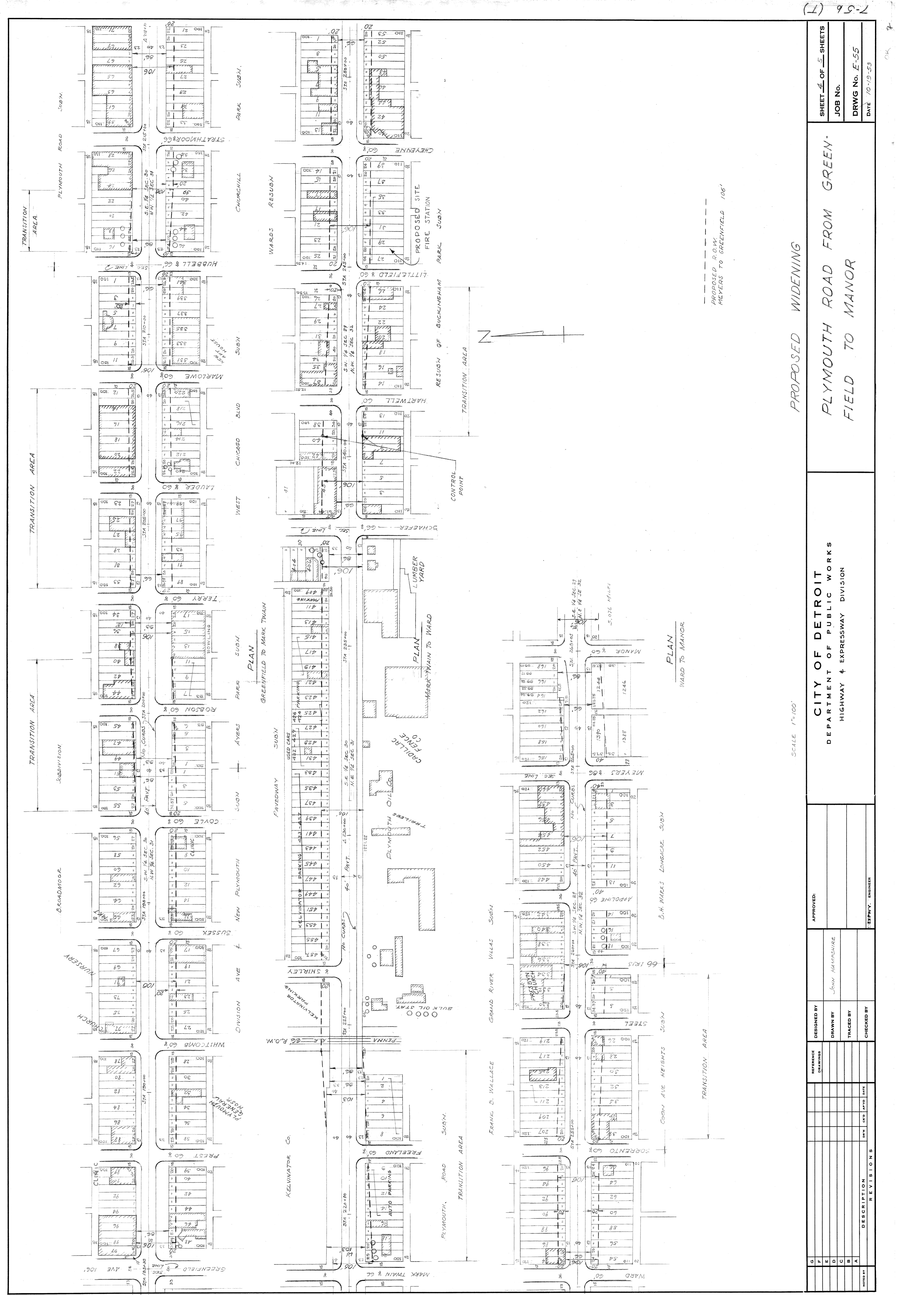
SCALE 1" = 100'

CITY OF DETROIT
DEPARTMENT OF PUBLIC WORKS
HIGHWAY & EXPRESSWAY DIVISION

PROPOSED WIDENING
PLYMOUTH ROAD FROM MINNOCK
TO GREENFIELD

NOTED BY	DESCRIPTION	DATE	BY

DESIGNED BY	APPROVED
DRAWN BY JOHN HAMPSHIRE	
TRACED BY	
CHECKED BY	



PROPOSED WIDENING
PLYMOUTH ROAD FROM GREENFIELD TO MANOR

CITY OF DETROIT
DEPARTMENT OF PUBLIC WORKS
HIGHWAY & EXPRESSWAY DIVISION

SHEET **4** OF **5** SHEETS
JOB No.
DRWG No. **E-55**
DATE **10-19-53**

SCALE 1/4" = 100'

NOTES	DESCRIPTION	REV	DATE	BY	CHECKED BY	APPROVED

DESIGNED BY
John Haverhill

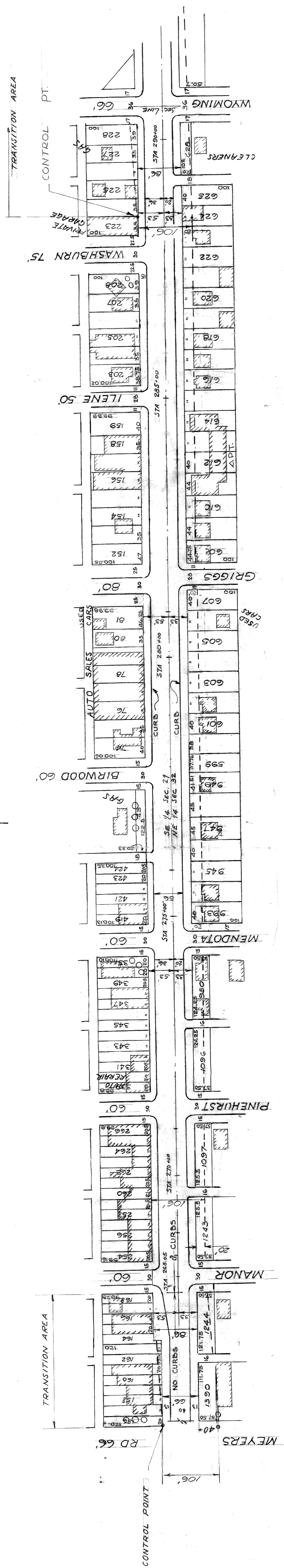
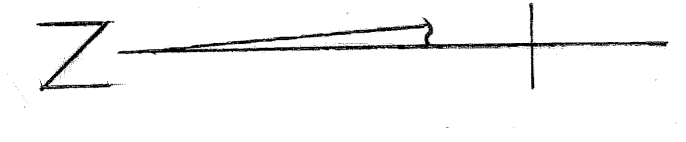
DRAWN BY
John Haverhill

TRACED BY

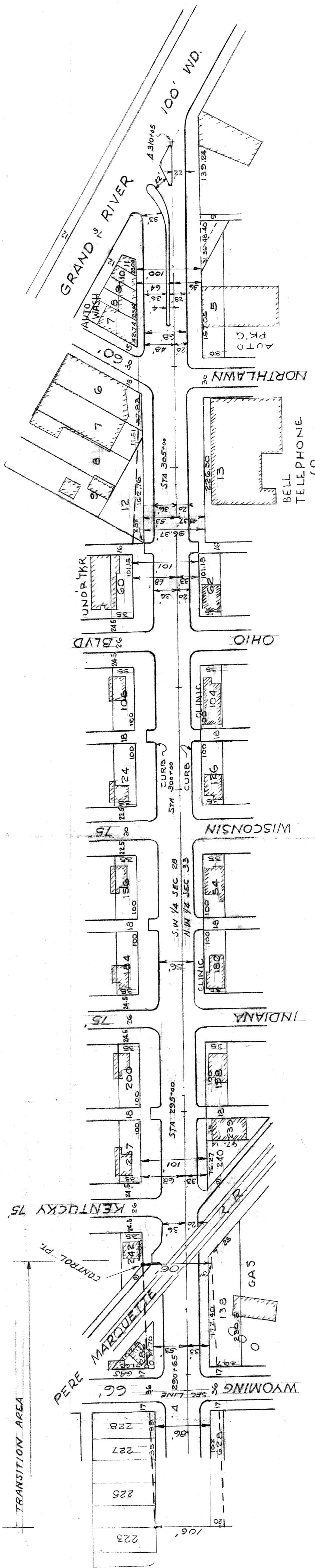
CHECKED BY

APPROVED

EXPY. ENGINEER



PLAN
MANOR TO WYOMING



PLAN
WYOMING TO GRAND RIVER

SEE DETAIL STUDY FOR
OHIO TO GRAND R. SECTION

PROPOSED R.O.W 100'
KENTUCKY TO MEYERS

SCALE 1"=100'

PROPOSED WIDENING
PLYMOUTH ROAD FROM MANOR
TO GRAND RIVER

CITY OF DETROIT
DEPARTMENT OF PUBLIC WORKS
HIGHWAY 4 EXPRESSWAY DIVISION

DESIGNED BY	APPROVED:	ENGINEER OF	ENGINEER
DRAWN BY	JOHN HAMPSHIRE		
TRACED BY			
CHECKED BY			

SHEET	OF	SHEETS
JOB NO.		
DRWG NO.	E-55	
DATE	11-13-53	

REVISIONS			
NO.	DATE	BY	DESCRIPTION