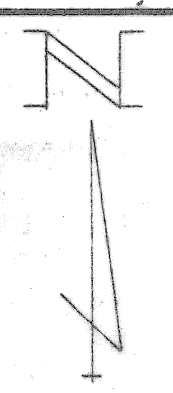
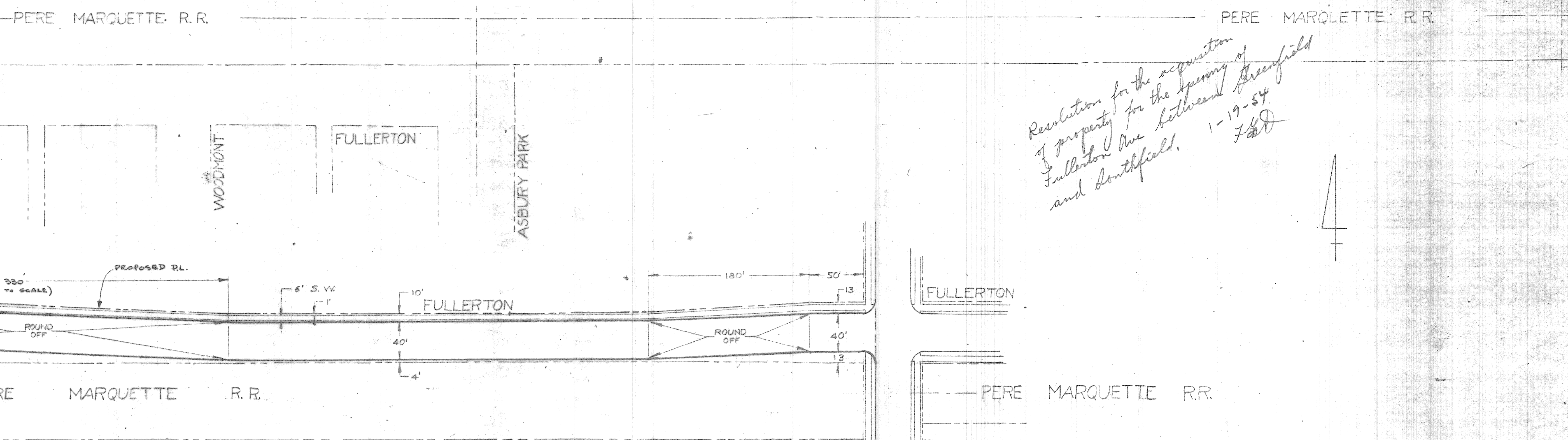
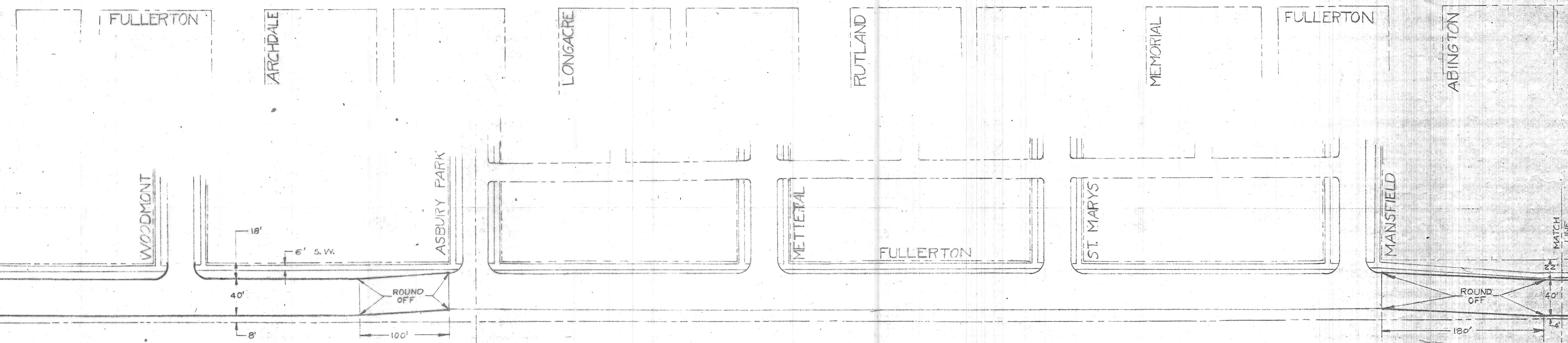
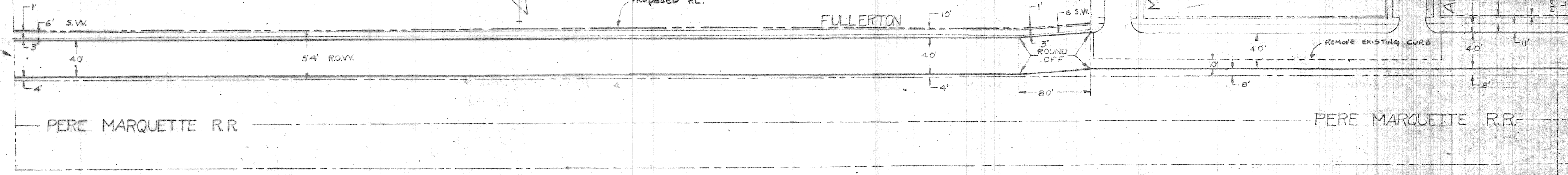


ON

CURB & SIDEWALK DESIGN IN SOUTHFIELD R.O.W. TO FIT W.C.R.C. PLANS FOR FULLERTON-SOUTHFIELD INTERSECTION.

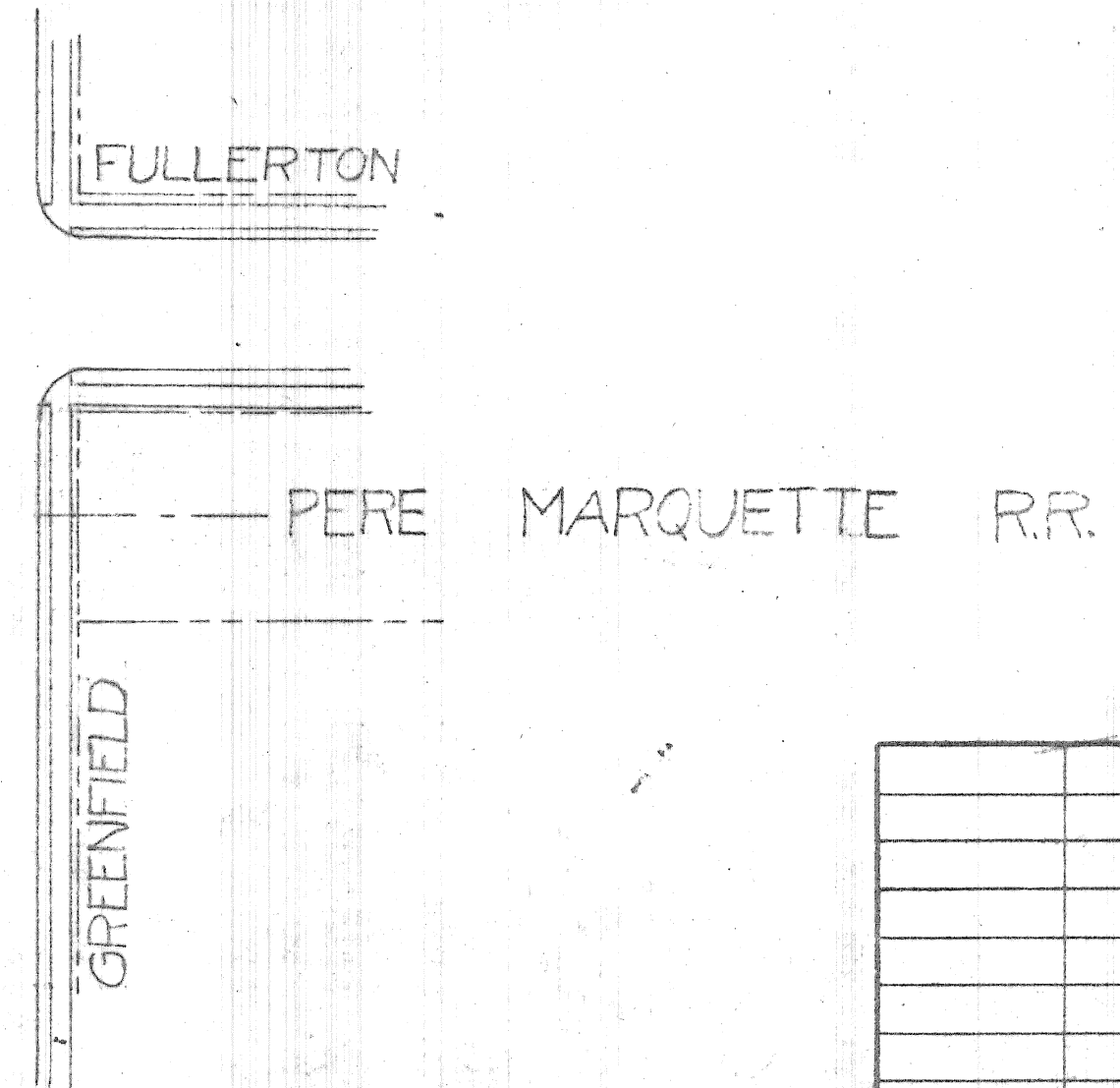


SOUTHFIELD



*Resolution for the acquisition of property for the opening of Fullerton Ave between Greenfield and Southfield. 1-19-54 F&D*

| LEGEND |                              |
|--------|------------------------------|
|        | NEW CURB                     |
|        | EXISTING CURB                |
|        | CURB TO BE REMOVED           |
|        | NEW PROPERTY LINE            |
|        | EXISTING PROPERTY LINE       |
| LEGEND |                              |
|        | TREE TO BE REMOVED           |
|        | POLE TO BE RELOCATED         |
|        | CATCH BASIN TO BE RELOCATED  |
|        | FIRE HYDRANT TO BE RELOCATED |
|        | MANHOLE TO BE REBUILT        |



C.C. 2/9/54

|  |                |
|--|----------------|
| CITY OF DETROIT<br>DEPARTMENT OF STREETS AND TRAFFIC |                |
| FULLERTON<br>FROM GREENFIELD<br>TO SOUTHFIELD        |                |
| DRAWN BY: F. S. K.                                   | CHECKED: S. K. |
| APPROVED: S. K.                                      | DATE: 1-7-54   |
| NO. 1D-117   | (25)           |

FULLERTON

ENV. V. DRAW. 14