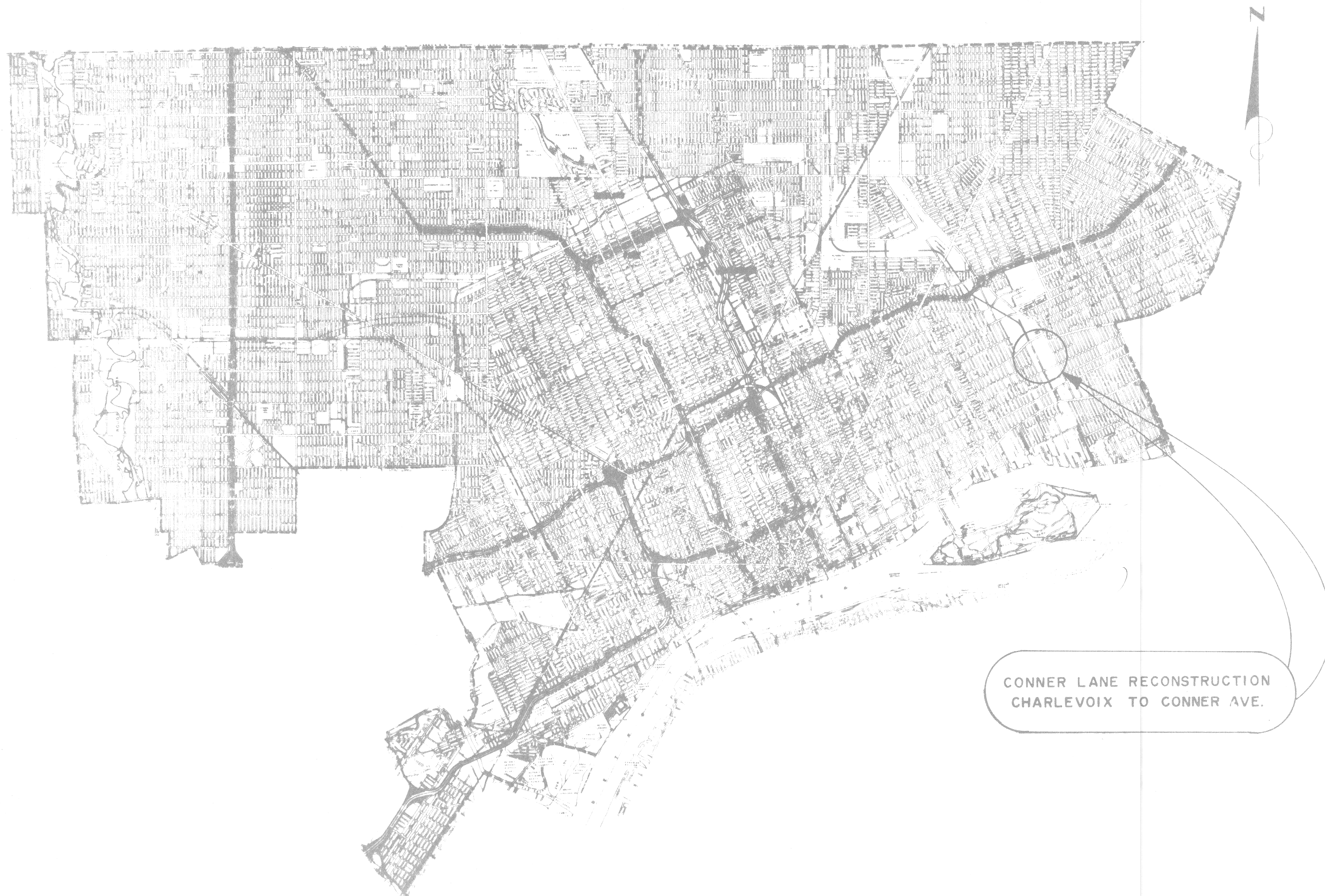


CITY OF DETROIT
 COLEMAN A. YOUNG — MAYOR
 CITY ENGINEERING DEPARTMENT

PLANS FOR PROPOSED
 CONNER LANE RECONSTRUCTION
 CHARLEVOIX TO CONNER AVE.



INDEX OF SHEETS

1. TITLE SHEET
2. TYPICAL CROSS — SECTIONS
- 3.-7. ALIGNMENT
- 8.-12. REMOVAL — UTILITIES
- 13.-17. PLAN AND PROFILE
18. TEMPORARY ROADWAY
19. SPECIAL STANDARDS & SPECIAL DETAILS

PROJECT: CONNER LANE
 RECONSTRUCTION, CHARLEVOIX
 TO CONNER AVE.

CONTRACT
 NO.

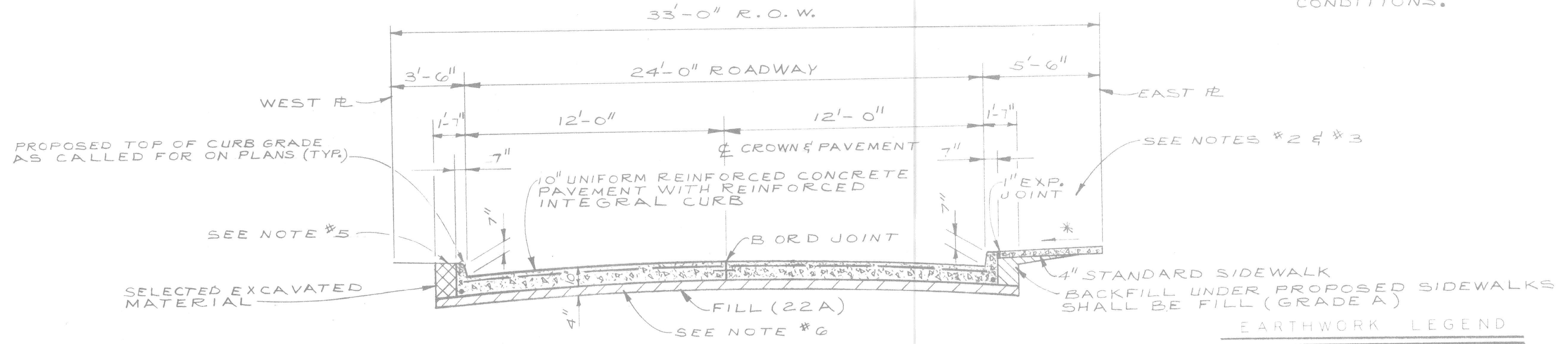
PLANS PREPARED BY
 CITY ENGINEERING DEPARTMENT

RECOMMENDED FOR APPROVAL	<i>[Signature]</i> ENGINEER OF INSPECTION	5/14/88 DATE
RECOMMENDED FOR APPROVAL	<i>[Signature]</i> ENGINEER OF STREETS	5/14/88 DATE
APPROVED	<i>[Signature]</i> DEPUTY DIRECTOR	5/14/88 DATE
APPROVED	<i>[Signature]</i> DIRECTOR	_____ DATE

DATE MAY , 1988

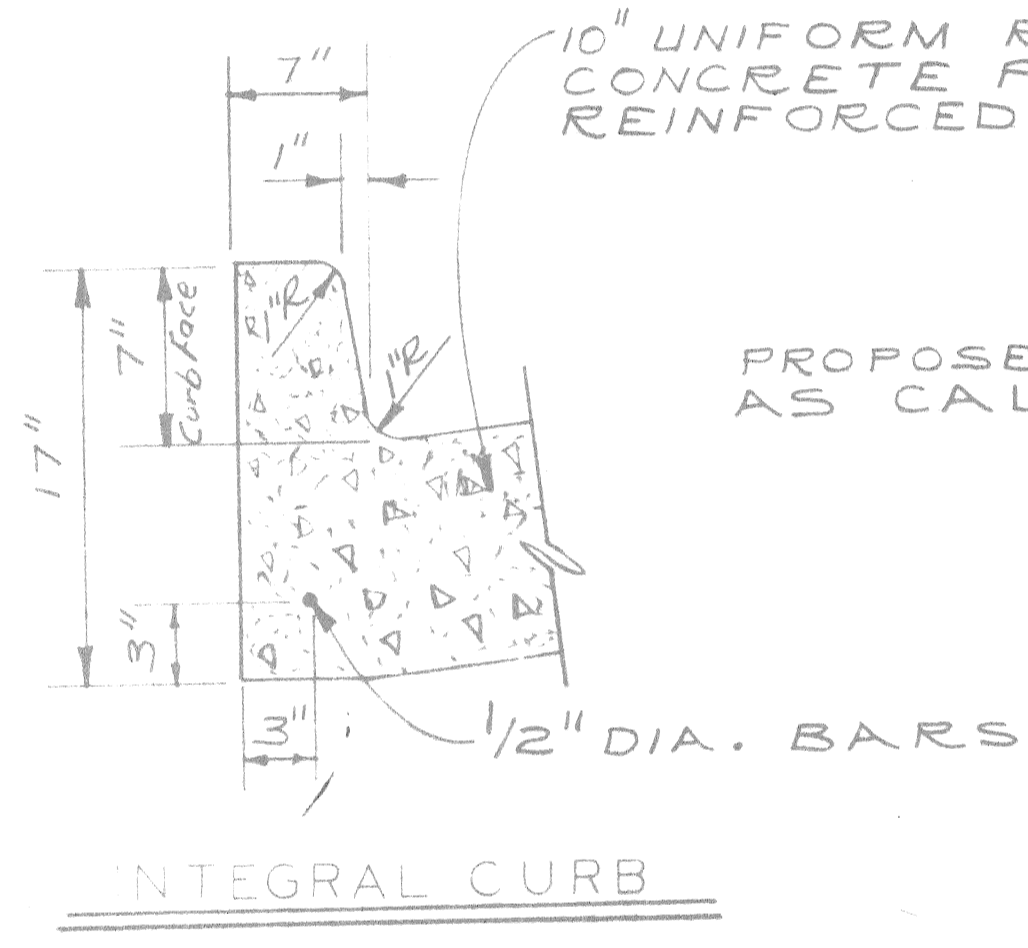
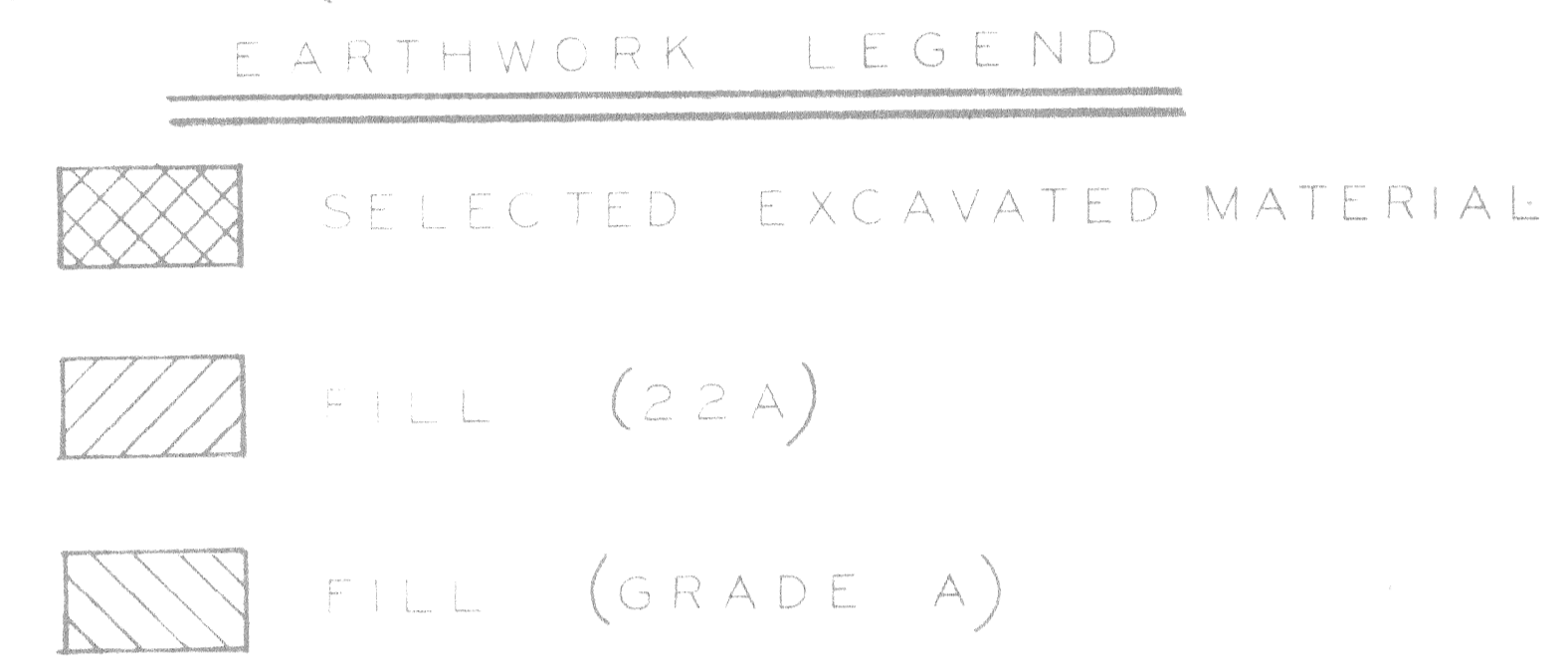
DRWG. NO. 10F19

* SIDEWALK SLOPES ARE TO BE 3/8" / FT. UNLESS THE ENGINEER DETERMINES THAT A MINIMUM SLOPE OF 1/4" / FT. OR A MAXIMUM SLOPE OF 3/4" / FT. MUST BE USED TO MEET EXISTING CONDITIONS.

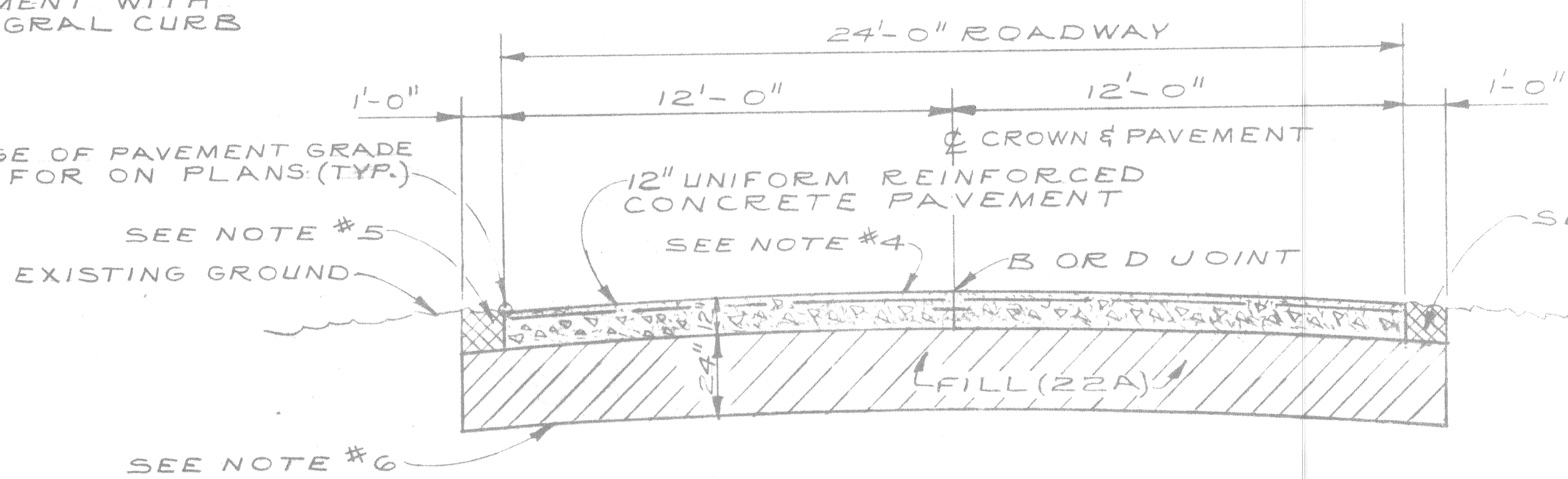


TYPICAL CROSS-SECTION NORTH-SOUTH CORNER LANE

(CHARLEVOIX TO STA. 28+41.97)

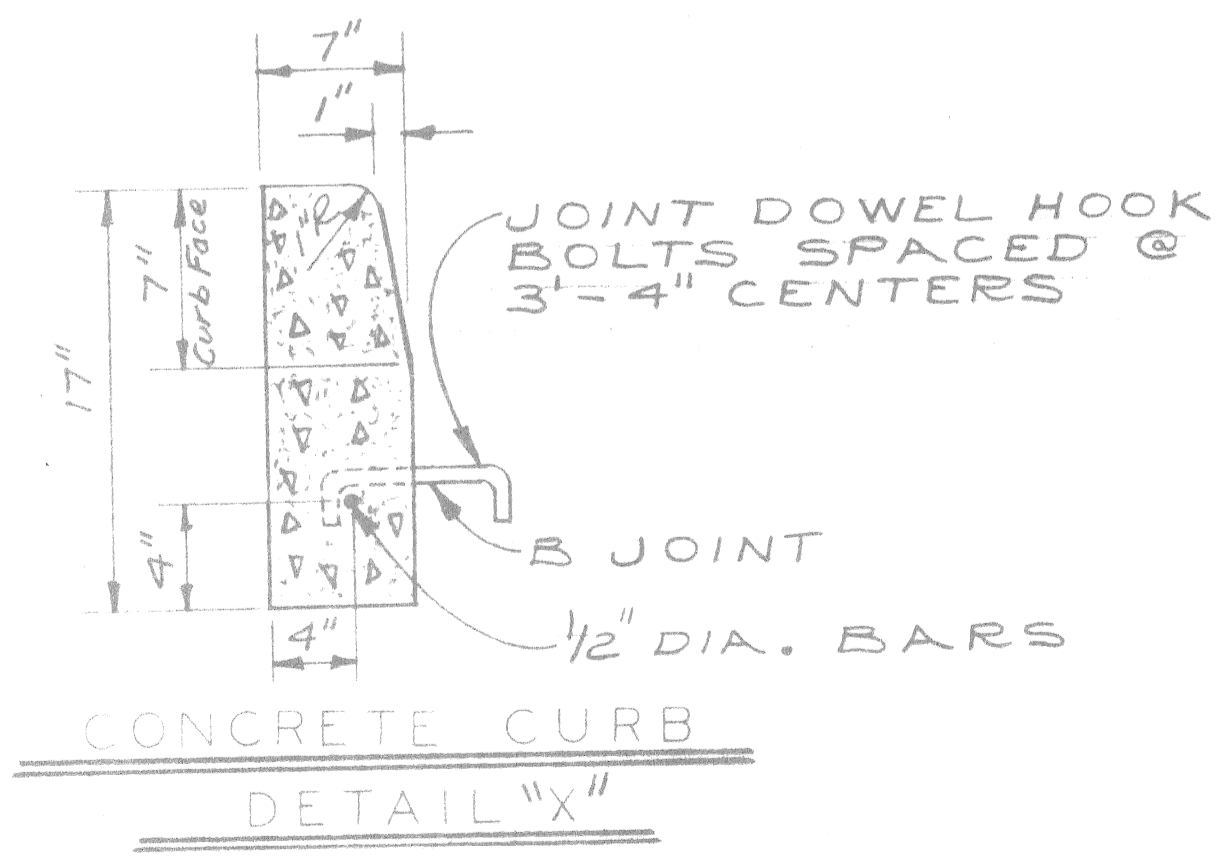


INTEGRAL CURB

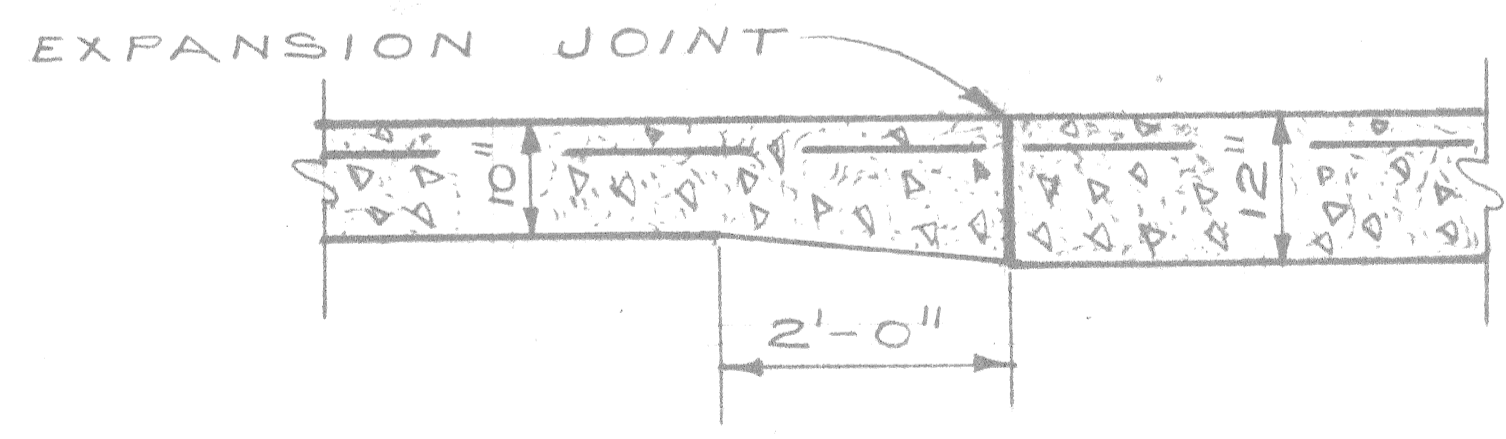


TYPICAL CROSS-SECTION EAST-WEST CORNER LANE

(STA. 29+36.12 TO STA. 38+55)



CONCRETE CURB DETAIL "X"



THICKENED EDGE TRANSITION FROM 10" TO 12" PAVEMENT

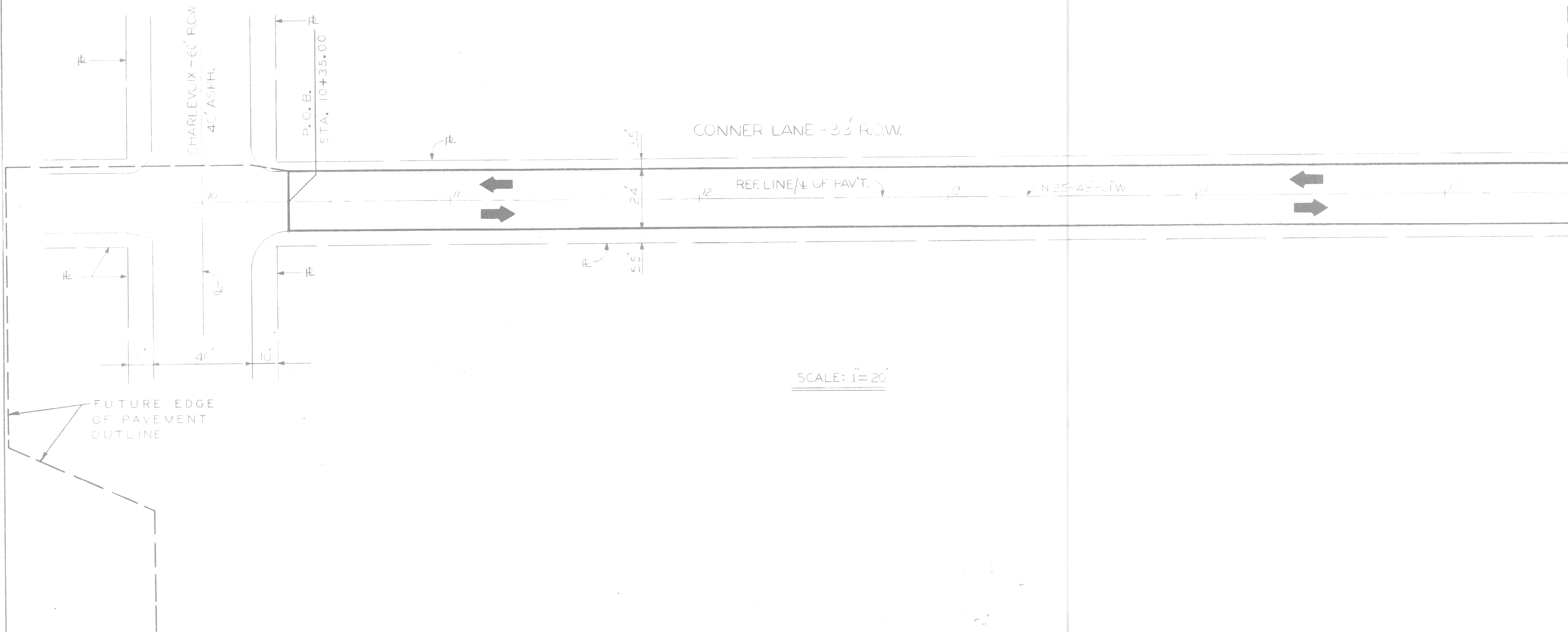
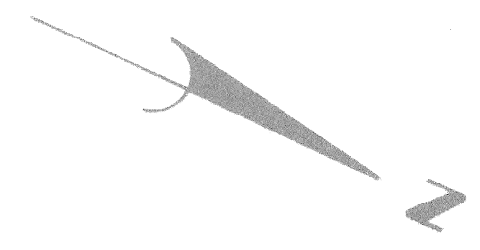
(TO BE CONSTRUCTED AT A TRANSVERSE EXPANSION JOINT BETWEEN STA. 28+41.97 AND STA. 29+36.12 AS DIRECTED BY THE ENGINEER. ALSO SEE NOTE #6.)

GENERAL NOTES:

1. The proposed curb shall be Integral Curb (See Detail this sheet) with Concrete Curb Detail "X" as an alternate. Regardless of construction method, the proposed curb shall be paid for as "10" Uniform Reinforced Concrete Pavement with Reinforced Integral Curb".
2. Place 4" standard sidewalk to face of building where building fronts on property line or as determined by the Engineer.
3. Where existing fence encroaches into East margin, sawcut existing sidewalk at existing fence. Remove and replace 2'± of existing sidewalk between fence and proposed curb.
4. Proposed East-West Corner Lane pavement may be crowned at center as shown, or may be sloped transversely in one direction as directed by the Engineer to drain and to match existing ground. (Minimum transverse slope = 0.02 Ft. / Ft.).
5. Backfill these areas with Selected Excavated Material, Fill (22A) surfaced with Bituminous, or as otherwise directed by the Engineer to match existing conditions.
6. Transition Fill (22A) Subbase from 4" thickness used in North-South Corner Lane to 24" thickness used in East-West Corner Lane as directed by the Engineer. Length and location of subbase transition will depend upon soil conditions encountered.
7. See Plan and Profile, Sta. 27+14.19 to Sta. 32+55 (Sheet No. 10) for location of transition from curbed to uncurbed pavt.

(ALL SECTIONS NO SCALE)

DESIGNED BY: W. B. DRAWN BY: J. J. TRACED BY: CHECKED BY: W. B.		APPROVED: ENGINEER OF STREETS HIGHWAY ENGINEER	CITY OF DETROIT CITY ENGINEERING DEPARTMENT BUREAUS OF STREETS AND HIGHWAYS	CONNER LANE RECONSTRUCTION CHARLEVOIX TO CONNER AVE. TYPICAL CROSS-SECTIONS	SHEET 2 OF 19 SHEETS CONTRACT NO. ASSIGNMENT NO. DATE: MAY, 1988
--	--	--	---	---	---



SCALE: 1"=20'

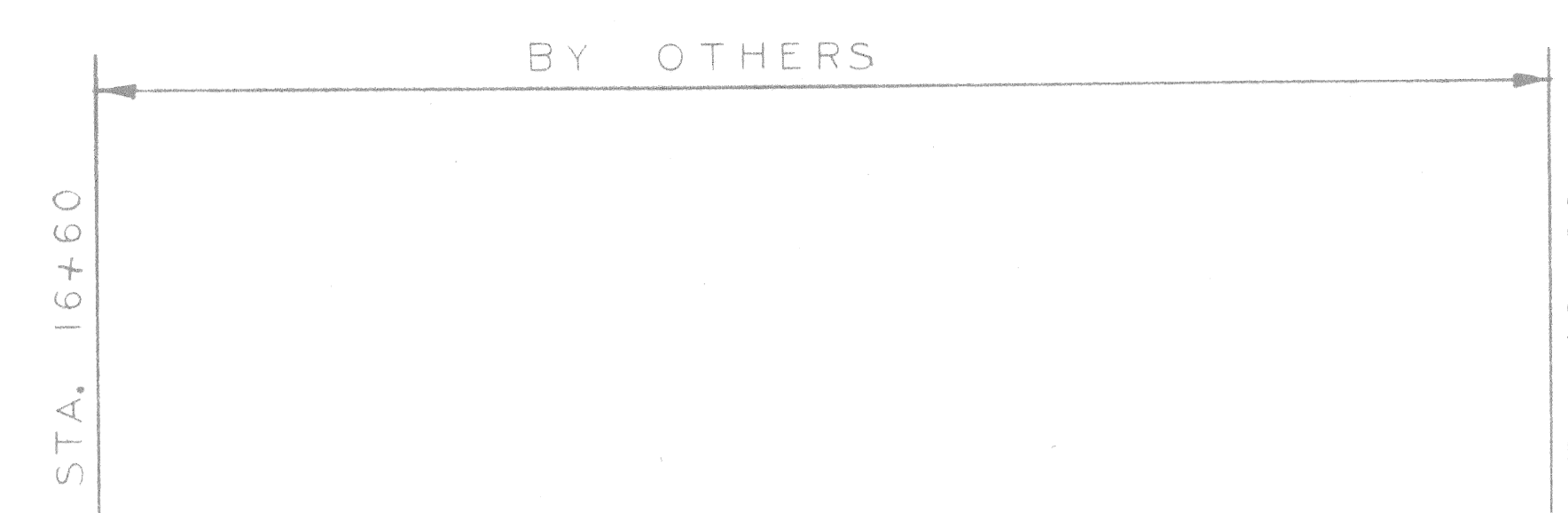
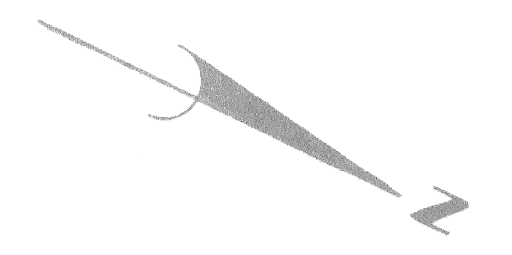
MATCH LINE STA. 15+50 (SEE SHEET NO. 4)

FUTURE EDGE OF PAVEMENT OUTLINE

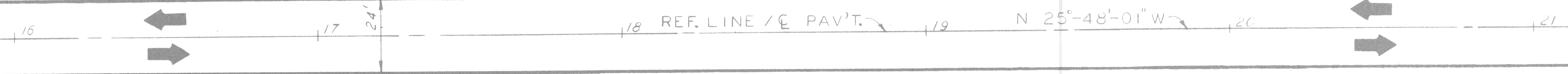
<table border="1"> <tr> <td>DESIGNED BY</td> <td>U. P.</td> </tr> <tr> <td>DRAWN BY</td> <td>U. P.</td> </tr> <tr> <td>TRACED BY</td> <td></td> </tr> <tr> <td>CHECKED BY</td> <td>W. B.</td> </tr> </table>		DESIGNED BY	U. P.	DRAWN BY	U. P.	TRACED BY		CHECKED BY	W. B.	<table border="1"> <tr> <td>APPROVED</td> <td><i>William P. Talley</i></td> </tr> <tr> <td>ENGINEER OF STREETS</td> <td></td> </tr> <tr> <td>HIGHWAY ENGINEER</td> <td></td> </tr> </table>	APPROVED	<i>William P. Talley</i>	ENGINEER OF STREETS		HIGHWAY ENGINEER		<p align="center">CITY OF DETROIT CITY ENGINEERING DEPARTMENT BUREAUS OF STREETS AND HIGHWAYS</p>	<p align="center">CONNER LANE RECONSTRUCTION CHARLEVOIX TO CONNER AVE.</p> <hr/> <p align="center">ALIGNMENT CHARLEVOIX TO STA. 15+50</p>	<table border="1"> <tr> <td>SHEET</td> <td>3</td> <td>OF</td> <td>19</td> <td>SHEETS</td> </tr> <tr> <td>CONTRACT NO.</td> <td colspan="4"></td> </tr> <tr> <td>ASSIGNMENT NO.</td> <td colspan="4"></td> </tr> <tr> <td>DATE</td> <td colspan="4">MAY, 1988</td> </tr> </table>	SHEET	3	OF	19	SHEETS	CONTRACT NO.					ASSIGNMENT NO.					DATE	MAY, 1988			
DESIGNED BY	U. P.																																						
DRAWN BY	U. P.																																						
TRACED BY																																							
CHECKED BY	W. B.																																						
APPROVED	<i>William P. Talley</i>																																						
ENGINEER OF STREETS																																							
HIGHWAY ENGINEER																																							
SHEET	3	OF	19	SHEETS																																			
CONTRACT NO.																																							
ASSIGNMENT NO.																																							
DATE	MAY, 1988																																						

MATCH LINE STA. 15+50 (SEE SHEET NO. 3)

MATCH LINE STA. 21+50 (SEE SHEET NO. 5)



CONNER LANE - 33' R.O.W.

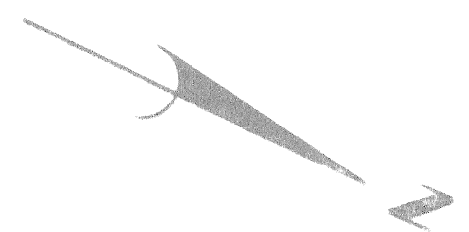


SCALE: 1" = 20'

<table border="1"> <tr> <td>DESIGNED BY</td> <td>U. P.</td> </tr> <tr> <td>DRAWN BY</td> <td>J. J.</td> </tr> <tr> <td>TRACED BY</td> <td></td> </tr> <tr> <td>CHECKED BY</td> <td>W. B.</td> </tr> </table>		DESIGNED BY	U. P.	DRAWN BY	J. J.	TRACED BY		CHECKED BY	W. B.	<table border="1"> <tr> <td>APPROVED</td> <td><i>William L. Talley</i></td> </tr> <tr> <td></td> <td>ENGINEER OF STREETS</td> </tr> <tr> <td></td> <td>HIGHWAY ENGINEER</td> </tr> </table>		APPROVED	<i>William L. Talley</i>		ENGINEER OF STREETS		HIGHWAY ENGINEER	<p>CITY OF DETROIT CITY ENGINEERING DEPARTMENT BUREAUS OF STREETS AND HIGHWAYS</p>			<p>CONNER LANE RECONSTRUCTION CHARLEVOIX TO CONNER AVE.</p>			<p>SHEET 4 OF 19 SHEETS</p>	
DESIGNED BY	U. P.																								
DRAWN BY	J. J.																								
TRACED BY																									
CHECKED BY	W. B.																								
APPROVED	<i>William L. Talley</i>																								
	ENGINEER OF STREETS																								
	HIGHWAY ENGINEER																								
<table border="1"> <tr> <th>COORD.</th> <th>DESCRIPTION</th> <th>ORN</th> <th>CKD</th> <th>APVD</th> <th>DATE</th> </tr> <tr> <td> </td> <td> </td> <td> </td> <td> </td> <td> </td> <td> </td> </tr> </table>		COORD.	DESCRIPTION	ORN	CKD	APVD	DATE							<p>ALIGNMENT STA. 15+50 TO STA. 21+50</p>			<p>CONTRACT NO.</p>		<p>ASSIGNMENT NO.</p>		<p>DATE MAY, 1988</p>				
COORD.	DESCRIPTION	ORN	CKD	APVD	DATE																				
<p>REVISIONS LOCATED BY COORDINATES ON SHEET</p>																									

MATCH LINE STA. 21+50 (SEE SHT. NO. 4)

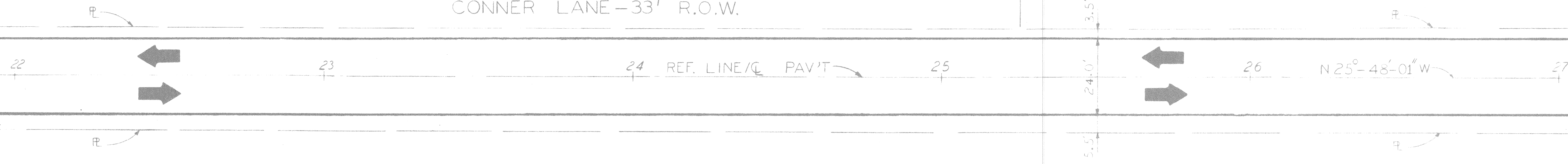
MATCH LINE STA. 27+14.19 (SEE SHT. NO. 6)



CONNER LANE - 33' R.O.W.

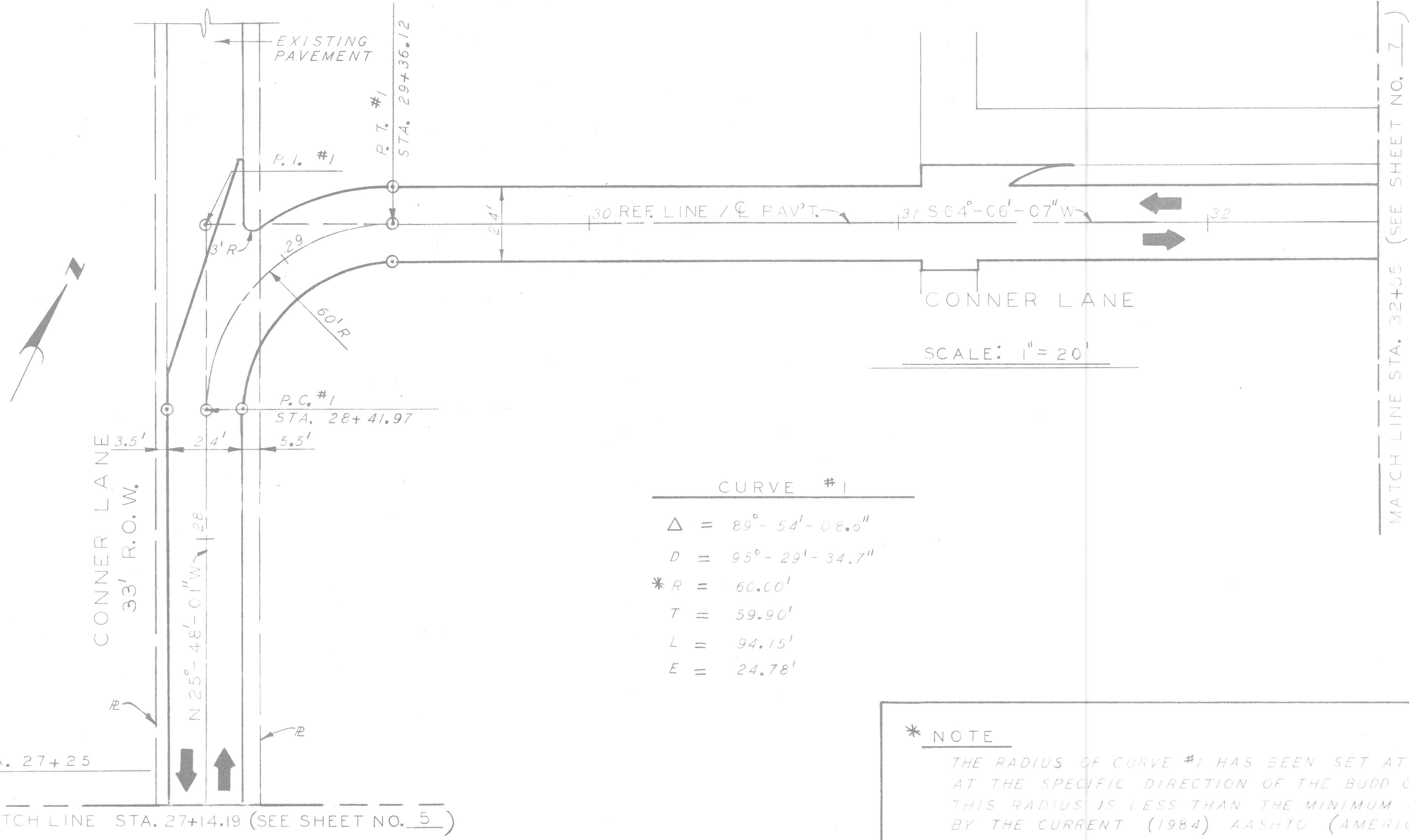
BY OTHERS

STA. 25+25



SCALE : 1"=20'

DESIGNED BY		S. J.	APPROVED ENGINEER OF STREETS HIGHWAY ENGINEER	CITY OF DETROIT CITY ENGINEERING DEPARTMENT BUREAUS OF STREETS AND HIGHWAYS	CONNER LANE RECONSTRUCTION		SHEET 5 OF 19 SHEETS CONTRACT NO. ASSIGNMENT NO. DATE MAY 1988
DRAWN BY		S. J.			CHARLEVOIX TO CONNER AVE.		
CHECKED BY		W. B.			ALIGNMENT STA. 21+50 TO STA. 27+14.19		
COORD.	DESCRIPTION	DRN.	END	APVD	DATE		
REVISIONS LOCATED BY COORDINATES ON SHEET							



CURVE #1	
Δ	$= 89^{\circ} - 54' - 08.0''$
D	$= 95^{\circ} - 29' - 34.7''$
* R	$= 60.00'$
T	$= 59.90'$
L	$= 94.15'$
E	$= 24.78'$

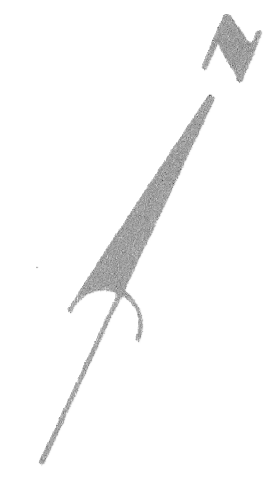
*** NOTE**
 THE RADIUS OF CURVE #1 HAS BEEN SET AT 60.00' AT THE SPECIFIC DIRECTION OF THE BUDD COMPANY. THIS RADIUS IS LESS THAN THE MINIMUM REQUIRED BY THE CURRENT (1984) AASHTO (AMERICAN ASSOCIATION OF STATE HIGHWAY AND TRANSPORTATION OFFICIALS) DESIGN STANDARDS FOR A TWO-DIRECTIONAL, 24' WIDE PAVEMENT TO BE USED BY COMMERCIAL SEMITRAILER VEHICLES.

BY OTHERS

MATCH LINE STA. 32+55 (SEE SHEET NO. 7)

<table border="1"> <tr> <td>DESIGNED BY</td> <td>S. J.</td> </tr> <tr> <td>DRAWN BY</td> <td>U. P.</td> </tr> <tr> <td>TRACED BY</td> <td></td> </tr> <tr> <td>CHECKED BY</td> <td>W. B.</td> </tr> </table>		DESIGNED BY	S. J.	DRAWN BY	U. P.	TRACED BY		CHECKED BY	W. B.	<table border="1"> <tr> <td>APPROVED</td> <td><i>William S. Kelly</i></td> </tr> <tr> <td></td> <td>ENGINEER OF STREETS</td> </tr> <tr> <td></td> <td>HIGHWAY ENGINEER</td> </tr> </table>	APPROVED	<i>William S. Kelly</i>		ENGINEER OF STREETS		HIGHWAY ENGINEER	<p align="center">CITY OF DETROIT CITY ENGINEERING DEPARTMENT BUREAUS OF STREETS AND HIGHWAYS</p>	<p align="center">CONNER LANE RECONSTRUCTION CHARLEVOIX TO CONNER AVE.</p>	<p align="center">ALIGNMENT STA. 27+14.19 TO STA. 32+55</p>	<p>SHEET 6 OF 19 SHEETS CONTRACT NO. ASSIGNMENT NO. DATE MAY, 1988</p>
DESIGNED BY	S. J.																			
DRAWN BY	U. P.																			
TRACED BY																				
CHECKED BY	W. B.																			
APPROVED	<i>William S. Kelly</i>																			
	ENGINEER OF STREETS																			
	HIGHWAY ENGINEER																			

MATCH LINE STA. 32+55 (SEE SHEET NO. 6)



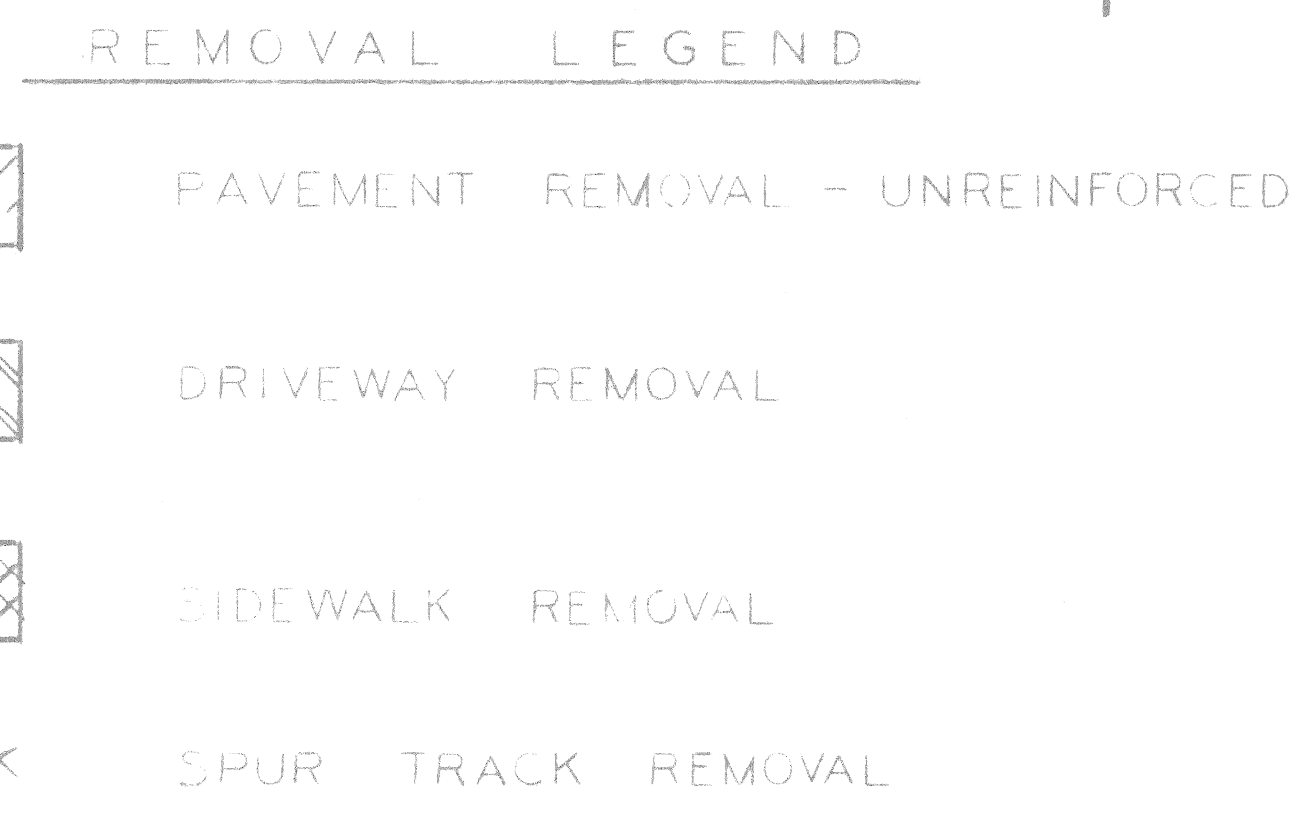
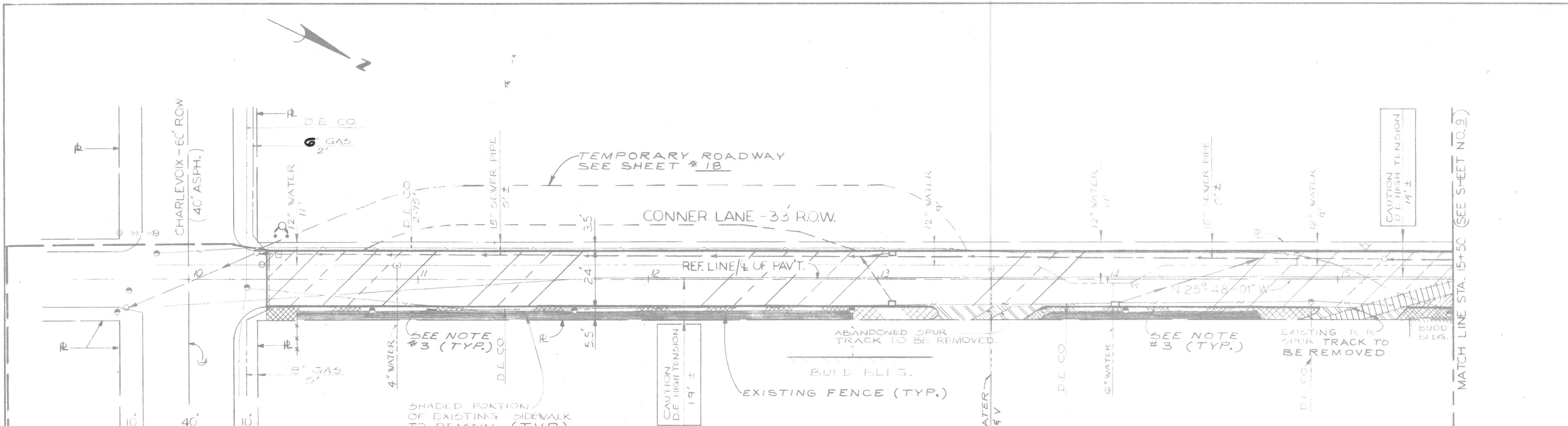
CONNER LANE



SCALE: 1"=20'

P. O. E.
STA. 38+55

		DESIGNED BY	S. J.	<small>APPROVED</small> <small>ENGINEER OF STREETS</small> <small>HIGHWAY ENGINEER</small>	CITY OF DETROIT CITY ENGINEERING DEPARTMENT BUREAUS OF STREETS AND HIGHWAYS	CONNER LANE RECONSTRUCTION		SHEET 7 OF 19 SHEETS CONTRACT NO. ASSIGNMENT NO. DATE MAY 1988
		DRAWN BY	J. J.			CHARLEVOIX TO CONNER AVE.		
		CHECKED BY	W. B.			ALIGNMENT STA. 32+55 TO STA. 38+55		
COORD.	DESCRIPTION	DRN.	END.	APVD.	DATE			
REVISIONS LOCATED BY COORDINATES ON SHEET								



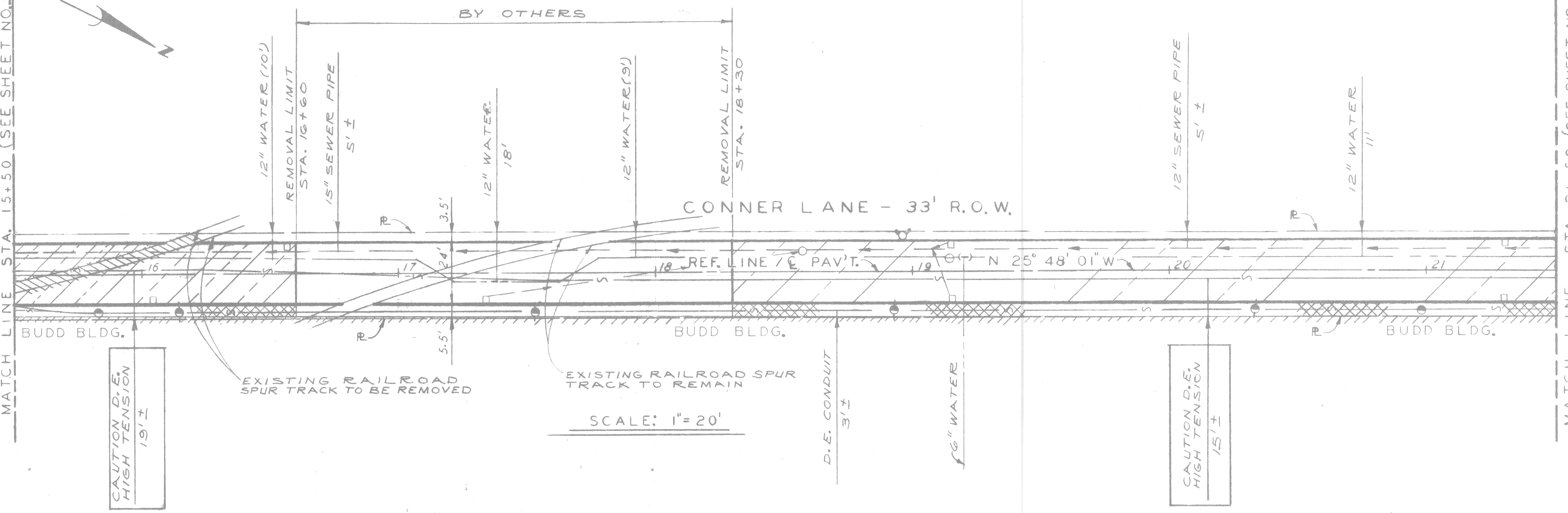
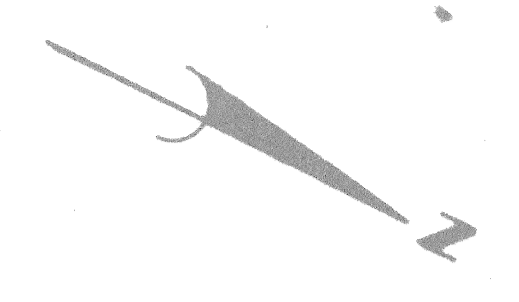
- NOTES
- 1 For Utility Legend and Symbols see sheet # 19.
 - 2 Locations of existing utility lines are based on the best available records and are not guaranteed for completeness or accuracy.
 - 3 Sawcut sidewalk at existing fence. Remove and replace 2'± of existing sidewalk between fence and curb.

CALL MISS DIG
48 HOURS PRIOR TO
CONSTRUCTION 647-7344

	DESIGNED BY S. J.	DRAWN BY SJ	CHECKED BY W.B.	APPROVED <i>William S. Talley</i> ENGINEER OF STREETS HIGHWAY ENGINEER	CITY OF DETROIT CITY ENGINEERING DEPARTMENT BUREAUS OF STREETS AND HIGHWAYS	CONNER LANE RECONSTRUCTION CHARLEVOIX TO CONNER AVE. REMOVAL - UTILITIES CHARLEVOIX TO STA. 15+50	SHEET 8 OF 19 SHEETS CONTRACT NO. ASSIGNMENT NO. DATE MAY, 1988
--	----------------------	----------------	--------------------	---	---	--	--

MATCH LINE STA. 15+50 (SEE SHEET NO. 8)

MATCH LINE STA. 21+50 (SEE SHEET NO. 10)



SCALE: 1" = 20'


CALL MISS DIG
48 HOURS PRIOR TO
CONSTRUCTION 647-7344

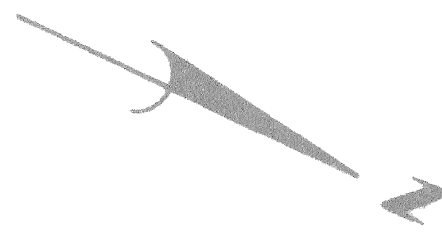
REMOVAL LEGEND

-  PAVEMENT REMOVAL - UNREINFORCED
-  DRIVEWAY REMOVAL
-  SIDEWALK REMOVAL
-  SPUR TRACK REMOVAL

NOTES:

1. For Utility Legend and Symbols, See Sht. # 19.
2. Location of existing utility lines are based on the best available records and are not guaranteed for completeness or accuracy.

	REFERENCE DRAWINGS DESIGNED BY S. J. DRAWN BY J. J. TRACED BY CHECKED BY S. J.	APPROVED  ENGINEER OF STREETS HIGHWAY ENGINEER	CITY OF DETROIT CITY ENGINEERING DEPARTMENT BUREAUS OF STREETS AND HIGHWAYS	CONNER LANE RECONSTRUCTION CHARLEVOIX TO CONNER AVE. REMOVAL - UTILITIES STA. 15+50 TO STA. 21+50	SHEET 9 OF 19 SHEETS CONTRACT NO. ASSIGNMENT NO. DATE MAY, 1988
COOR D DESCRIPTION DRN CKD APVD DATE REVISIONS LOCATED BY COORDINATES ON SHEET					



MATCH LINE STA. 21+50 (SEE SHT. NO. 9)

CAUTION D.E. HIGH TENSION 19'±

CONNER LANE - 33' R.O.W.

BUDD BLDG.

D.E. CONDUIT 3'±

6" WATER

REMOVAL LIMIT STA. 25+25

BY OTHERS

CAUTION D.E. HIGH TENSION 19'±

MATCH LINE STA. 27+14.19 (SEE SHT. NO. 11)

EXISTING RAILROAD SPUR TRACK TO REMAIN

1/8" D.E. CO. LINE

BUDD PRIMARY SWITCH HOUSE (HIGH VOLTAGE)

REMOVAL LEGEND



PAVEMENT REMOVAL - UNREINFORCED



DRIVEWAY REMOVAL



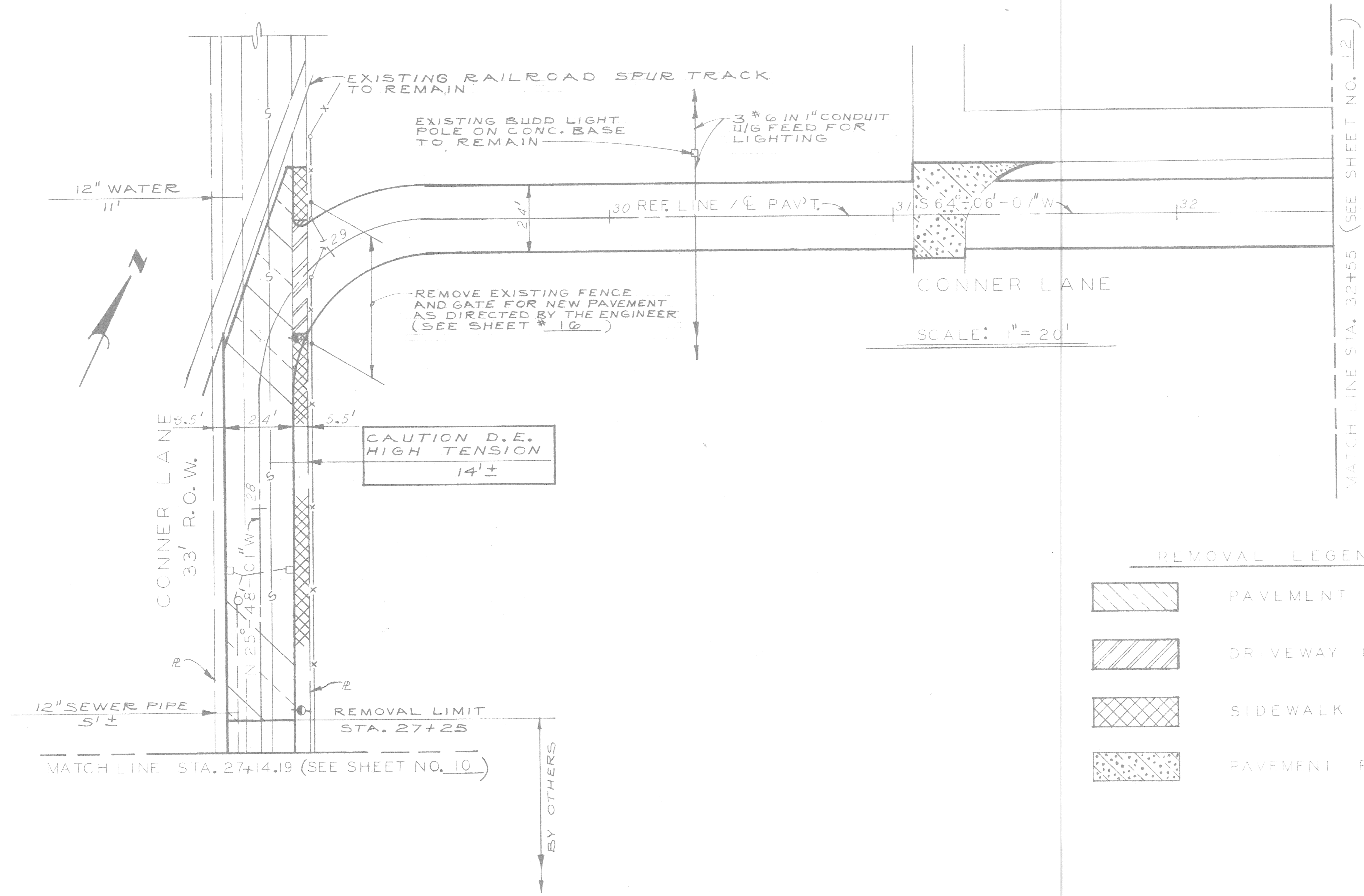
SIDEWALK REMOVAL

CALL MISS DIG 48 HOURS PRIOR TO CONSTRUCTION 647-7344

NOTES:

1. For Utility Legend and Symbols, See Sht. # 19
2. Location of existing utility lines are based on the best available records and are not guaranteed for completeness or accuracy.

<table border="1"> <tr><td>COOR D</td><td>DESCRIPTION</td><td>DRN</td><td>CKD</td><td>APVD</td><td>DATE</td></tr> <tr><td colspan="6">REVISIONS LOCATED BY COORDINATES ON SHEET</td></tr> </table>		COOR D	DESCRIPTION	DRN	CKD	APVD	DATE	REVISIONS LOCATED BY COORDINATES ON SHEET						<table border="1"> <tr><td>REFERENCE DRAWINGS</td><td>DESIGNED BY</td><td>S.J.</td></tr> <tr><td></td><td>DRAWN BY</td><td>U.P.</td></tr> <tr><td></td><td>TRACED BY</td><td></td></tr> <tr><td></td><td>CHECKED BY</td><td>W.B. / S.J.</td></tr> </table>	REFERENCE DRAWINGS	DESIGNED BY	S.J.		DRAWN BY	U.P.		TRACED BY			CHECKED BY	W.B. / S.J.	<table border="1"> <tr><td>APPROVED</td><td><i>William J. Talley</i></td></tr> <tr><td>ENGINEER OF STREETS</td><td></td></tr> <tr><td>HIGHWAY ENGINEER</td><td></td></tr> </table>	APPROVED	<i>William J. Talley</i>	ENGINEER OF STREETS		HIGHWAY ENGINEER		<p align="center">CITY OF DETROIT CITY ENGINEERING DEPARTMENT BUREAUS OF STREETS AND HIGHWAYS</p>	<p align="center">CONNER LANE RECONSTRUCTION CHARLEVOIX TO CONNER AVE.</p>	<table border="1"> <tr><td>SHEET</td><td>10</td><td>OF</td><td>19</td><td>SHEETS</td></tr> <tr><td>CONTRACT NO.</td><td colspan="4"></td></tr> <tr><td>ASSIGNMENT NO.</td><td colspan="4"></td></tr> <tr><td>DATE</td><td colspan="4">MAY, 1988</td></tr> </table>	SHEET	10	OF	19	SHEETS	CONTRACT NO.					ASSIGNMENT NO.					DATE	MAY, 1988			
COOR D	DESCRIPTION	DRN	CKD	APVD	DATE																																																			
REVISIONS LOCATED BY COORDINATES ON SHEET																																																								
REFERENCE DRAWINGS	DESIGNED BY	S.J.																																																						
	DRAWN BY	U.P.																																																						
	TRACED BY																																																							
	CHECKED BY	W.B. / S.J.																																																						
APPROVED	<i>William J. Talley</i>																																																							
ENGINEER OF STREETS																																																								
HIGHWAY ENGINEER																																																								
SHEET	10	OF	19	SHEETS																																																				
CONTRACT NO.																																																								
ASSIGNMENT NO.																																																								
DATE	MAY, 1988																																																							



MATCH LINE STA. 32+55 (SEE SHEET NO. 12)

REMOVAL LEGEND

- PAVEMENT REMOVAL - UNREINFORCED
- DRIVEWAY REMOVAL
- SIDEWALK REMOVAL
- PAVEMENT REMOVAL - REINFORCED

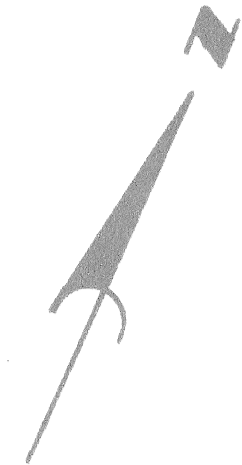
NOTES:

1. For Utility Legend and Symbols, See Sht. # 19
2. Location of existing utility lines are based on the best available records and are not guaranteed for completeness or accuracy.

CALL MISS DIG
48 HOURS PRIOR TO
CONSTRUCTION 647-7344

	<table border="1" style="width: 100%; border-collapse: collapse;"> <tr> <th>REF. NO.</th> <th>DESCRIPTION</th> <th>DATE</th> </tr> <tr> <td> </td> <td> </td> <td> </td> </tr> <tr> <td> </td> <td> </td> <td> </td> </tr> </table>	REF. NO.	DESCRIPTION	DATE							DESIGNED BY: S. J. / W. B. DRAWN BY: J. J. CHECKED BY: W. B.	APPROVED: ENGINEER OF STREETS HIGHWAY ENGINEER	CITY OF DETROIT CITY ENGINEERING DEPARTMENT BUREAUS OF STREETS AND HIGHWAYS	CONNER LANE RECONSTRUCTION CHARLEVOIX TO CONNER AVE. REMOVAL - UTILITIES STA. 27+14.19 TO STA. 32+55	SHEET 11 OF 19 SHEETS CONTRACT NO. ASSIGNMENT NO. DATE MAY, 1988
REF. NO.	DESCRIPTION	DATE													

MATCH LINE STA. 32+55 (SEE SHEET NO. 11)



RELOCATE BUDD PRIVATE STREET LIGHT ARM ON WOOD POLE W/O.H. LINE FEEDING FROM SOUTH AND CONTINUING NORTH.

30" SEWER

CONNER LANE

REMOVE 2 CONC. FILLED STEEL GUARD POSTS (INCIDENTAL TO PAVEMENT REMOVAL)

35 REF. LINE / C PAV'T.

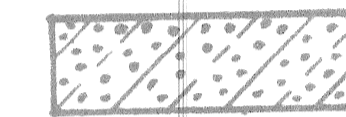
36 S 64°-06'-07" W

U/G CONDUITS W/POWER AND PHONE

SCALE: 1"=20'

RECONSTRUCT CABLE VAULT C.V. 50-2 FOR 480 V. POWER AND PHONE.

REMOVAL LEGEND



PAVEMENT REMOVAL - REINFORCED

CALL MISS DIG 48 HOURS PRIOR TO CONSTRUCTION 647-7348

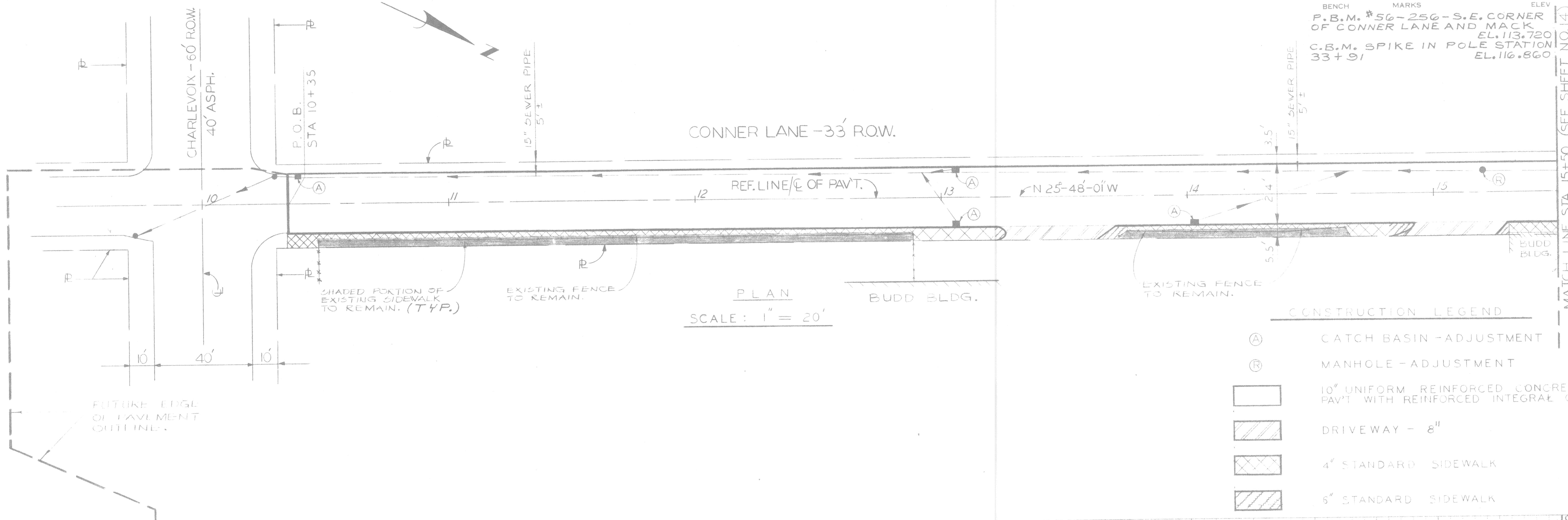
NOTES:

1. For Utility Legend and Symbols, See Sht. # 19.
2. Location of existing utility lines are based on the best available records and are not guaranteed for completeness or accuracy.

P.O.E.
STA. 38+55

REVISIONS LOCATED BY COORDINATES ON SHEET COORD. DESCRIPTION DRN CK'D APVD DATE		DESIGNED BY S. J. DRAWN BY J. J. TRACED BY CHECKED BY W. B.	APPROVED <i>William J. Talley</i> ENGINEER OF STREETS HIGHWAY ENGINEER	CITY OF DETROIT CITY ENGINEERING DEPARTMENT BUREAUS OF STREETS AND HIGHWAYS	CONNER LANE RECONSTRUCTION CHARLEVOIX TO CONNER AVE. REMOVAL - UTILITIES STA. 32+55 TO STA. 38+55	SHEET 12 OF 19 SHEETS CONTRACT NO. ASSIGNMENT NO. DATE MAY, 1988
--	--	--	---	---	--	---

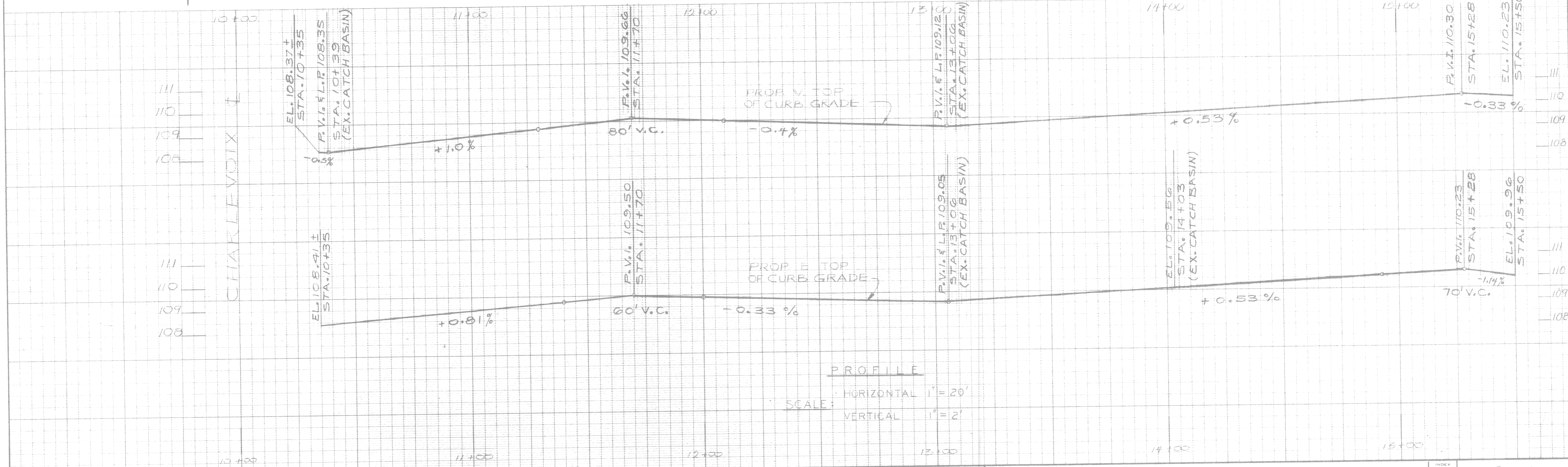
BENCH MARKS
P.B.M. #50-250 - S.E. CORNER OF CONNER LANE AND MACK
EL. 113.720
C.B.M. SPIKE IN POLE STATION 33+91
EL. 116.860



PLAN
SCALE: 1" = 20'

CONSTRUCTION LEGEND

(A)	CATCH BASIN - ADJUSTMENT
(R)	MANHOLE - ADJUSTMENT
[Symbol: 10' uniform reinforced concrete pvt with reinforced integral curb]	10' UNIFORM REINFORCED CONCRETE PAVT WITH REINFORCED INTEGRAL CURB
[Symbol: 8" driveway]	DRIVEWAY - 8"
[Symbol: 4' standard sidewalk]	4' STANDARD SIDEWALK
[Symbol: 6' standard sidewalk]	6' STANDARD SIDEWALK

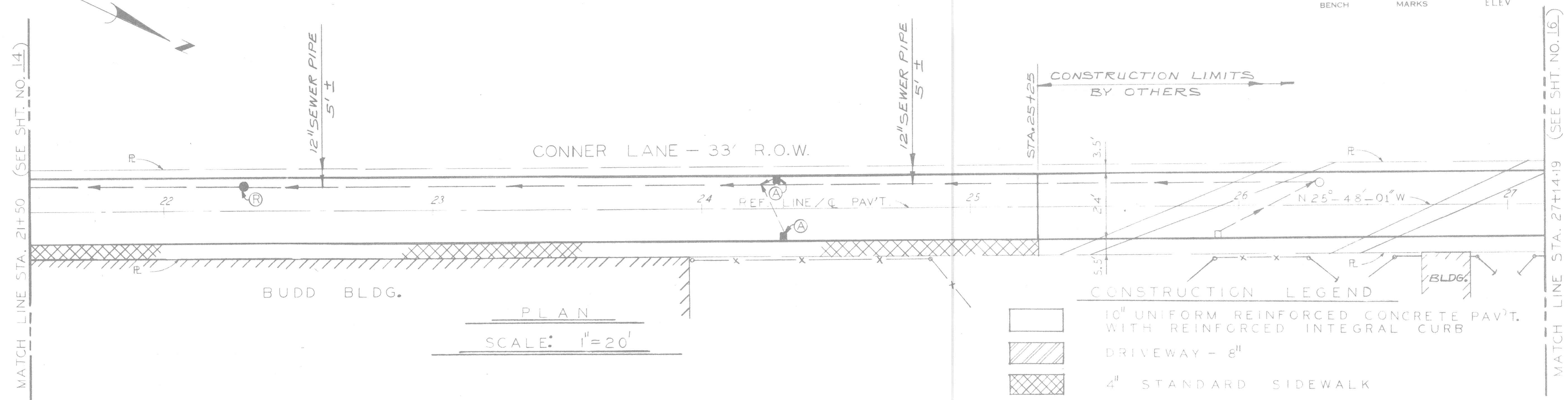


PROFILE
HORIZONTAL 1" = 20'
SCALE: VERTICAL 1" = 2'

DESCRIPTION	DR. N.	CK. D.	AP. V.D.	DATE
REVISIONS				
BY	U.P., S.J.	W.B.		
CHECKED BY	S.J.	W.B.		
APPROVED	 ENGINEER OF STREETS HIGHWAY ENGINEER			

CITY OF DETROIT
CITY ENGINEERING DEPARTMENT
BUREAUS OF STREETS AND HIGHWAYS

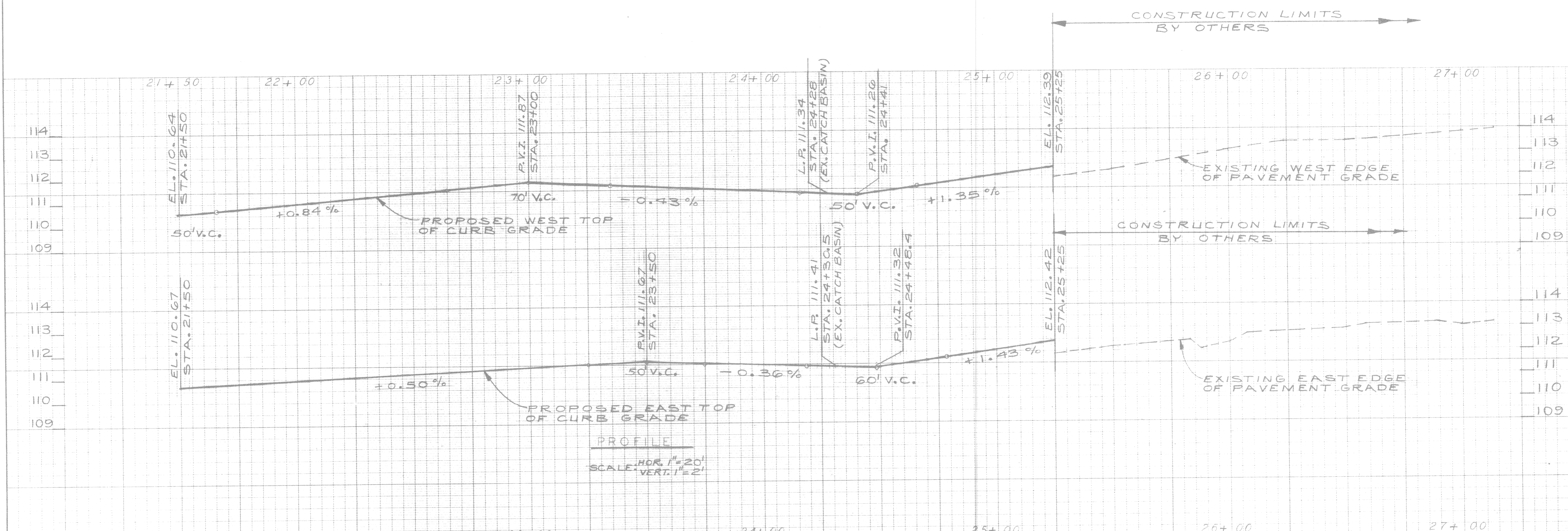
CONNER LANE RECONSTRUCTION CHARLEVOIX TO CONNER AVE		INDEX NO.	SHEET 13 OF 19 SHEETS
PLAN AND PROFILE CHARLEVOIX TO STA 15+50		CONTRACT NO.	
		ASSIGNMENT NO.	
		DATE	MAY, 1988



PLAN
SCALE: 1"=20'

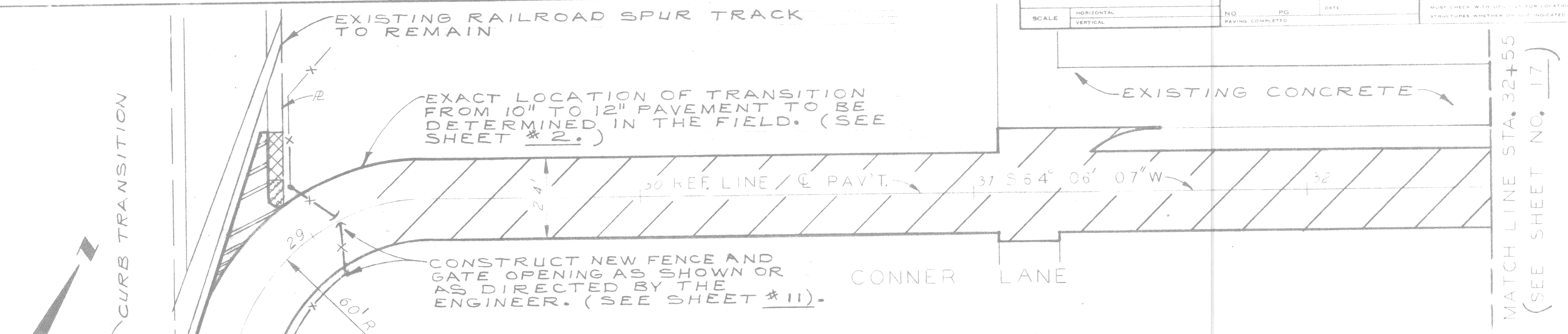
CONSTRUCTION LEGEND

- 10" UNIFORM REINFORCED CONCRETE PAV'T. WITH REINFORCED INTEGRAL CURB
- DRIVEWAY - 8"
- 4" STANDARD SIDEWALK
- CATCH BASIN - ADJUSTMENT
- MANHOLE - ADJUSTMENT



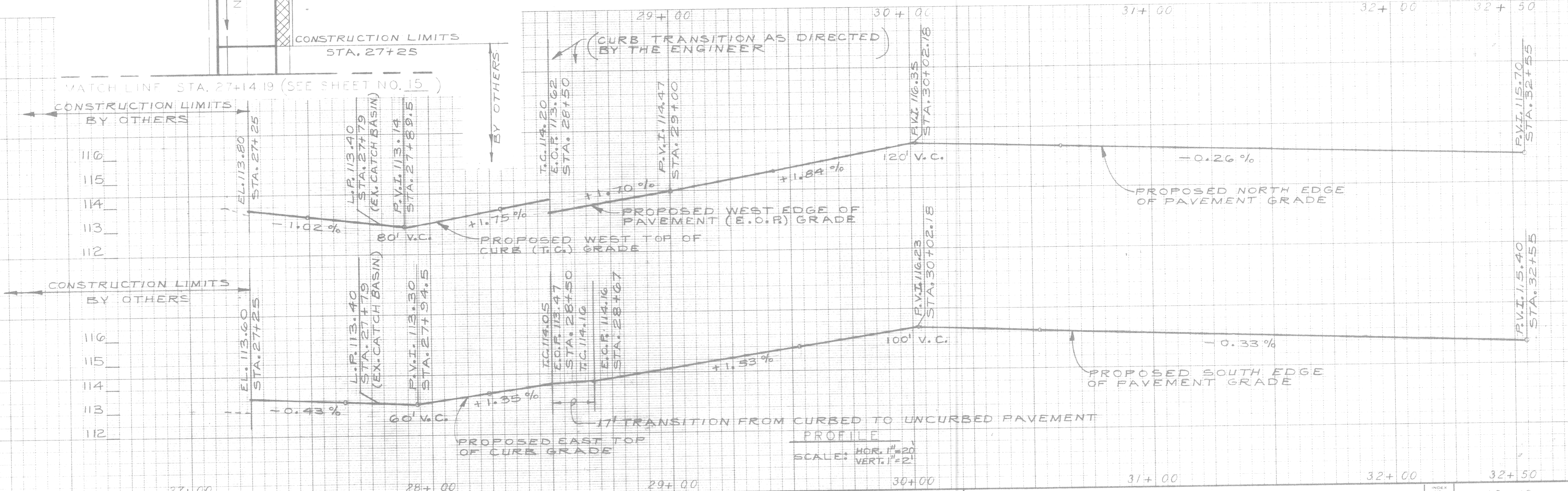
PROFILE
SCALE: HOR. 1"=20'
VERT. 1"=2'

REVISIONS DESCRIPTION CHECKED BY DATE		BY PLAN S.J./J.J. W.B.		CHECKED BY GRADE S.J./J.J. W.B.		APPROVED ENGINEER OF STREETS		CITY OF DETROIT CITY ENGINEERING DEPARTMENT BUREAU OF STREETS AND HIGHWAYS		CONNER LANE RECONSTRUCTION CHARLEVOIX TO CONNER AVE. PLAN AND PROFILE STA. 21+50 TO STA. 27+14.19		INDEX NO. SHEET 15 OF 19 SHEETS	
ESTIMATE FINAL CHECK REVIEW		HIGHWAY ENGINEER		CONTRACT NO.		ASSIGNMENT NO.		DATE MAY, 1988		ELEV.			



PLAN
SCALE: 1"=20'

CONSTRUCTION LEGEND	
(A)	CATCH BASIN - ADJUSTMENT
(R)	MANHOLE - ADJUSTMENT
[Hatched Box]	12" UNIFORM REINFORCED CONCRETE PAV'T.
[Hatched Box]	10" UNIFORM REINFORCED CONCRETE PAV'T. WITH REINFORCED INTEGRAL CURB
[Hatched Box]	8" UNIFORM NON-REINFORCED CONCRETE PAV'T. WITH NON-REINFORCED INTEGRAL CURB
[Hatched Box]	4" STANDARD SIDEWALK
[Hatched Box]	6" STANDARD SIDEWALK



PROFILE
SCALE: HOR. 1"=20' VERT. 1"=2'

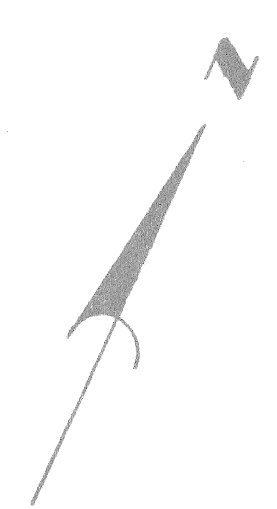
DESCRIPTION	DR. N. CK. D. AP. VO. DATE	REVISIONS
PLAN	S. J. W. B.	Checked by: <i>William L. Kelly</i> APPROVED ENGINEER OF STREETS
GRADE	S. J. W. B.	HIGHWAY ENGINEER
ESTIMATE		
FINAL	CHECK REVIEW	

CITY OF DETROIT
CITY ENGINEERING DEPARTMENT
BUREAUS OF STREETS AND HIGHWAYS

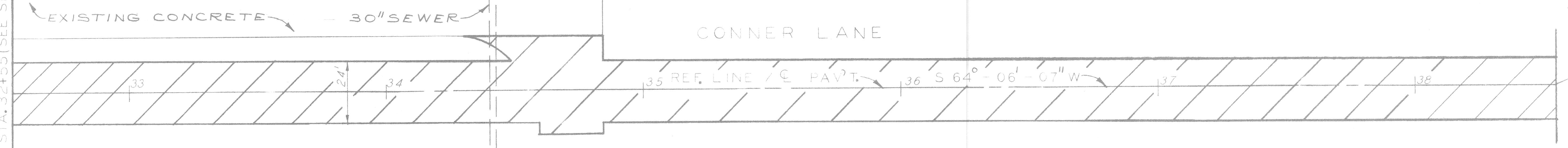
CONNER LANE RECONSTRUCTION
CHARLEVOIX TO CONNER AVE.

PLAN AND PROFILE
STA. 27+14.19 TO STA. 32+55

INDEX NO.	SHEET 16 OF 19 SHEETS
CONTRACT NO.	
ASSIGNMENT NO.	
DATE	MAY, 1988

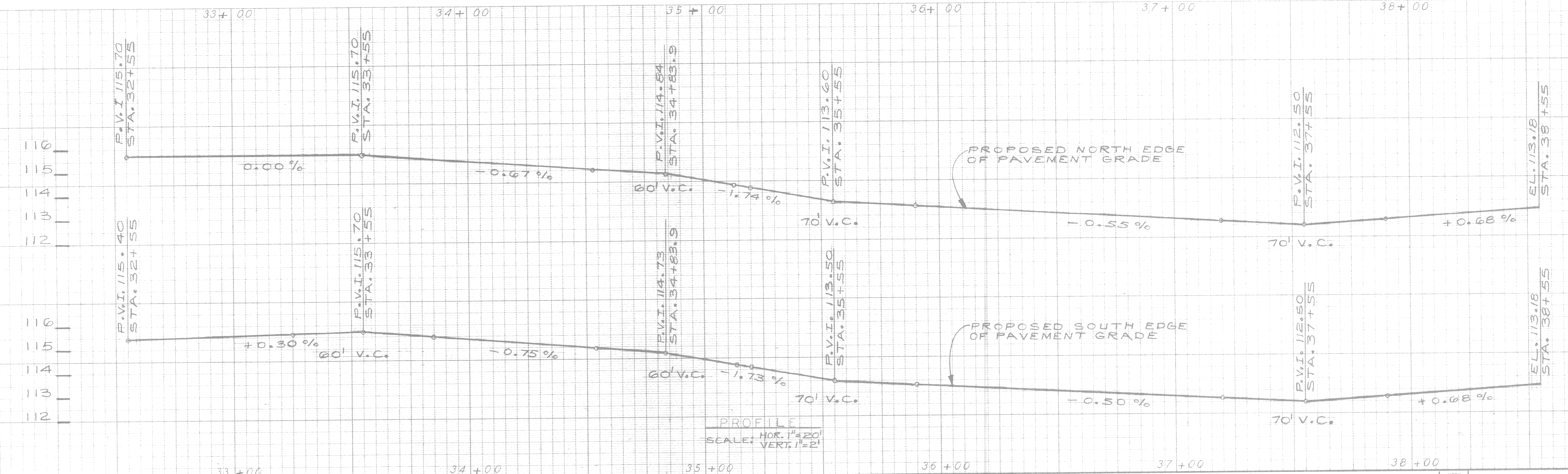


MATCH LINE STA. 32+55 (SEE SHEET NO. 16)



PLAN
SCALE: 1" = 20'

CONSTRUCTION LEGEND
 12" UNIFORM REINFORCED CONCRETE PAVEMENT



PROFILE
SCALE: HOR. 1" = 20'
VERT. 1" = 2'

REVISIONS	DESCRIPTION	DATE	BY	CHECKED BY	APPROVED

CITY OF DETROIT
CITY ENGINEERING DEPARTMENT
BUREAU OF STREETS AND HIGHWAYS

CONNER LANE RECONSTRUCTION
CHARLEVOIX TO CONNER AVE.

PLAN AND PROFILE
STA. 32+55 TO STA. 38+55

INDEX NO.	SHEET 17 OF 19 SHEETS
CONTRACT NO.	
ASSIGNMENT NO.	
DATE	MAY, 1988

