

AS BUILT
CATCH BASIN
RIM = 99.27
12" NE = 93.6

6" CONC. SIM

AS BUILT C.B. "A"

AS BUILT
MAN HOLE
RIM = 95.36
18" N = 92.4
15" S = 92.4
12" NE = 89.0
12" E = 89.0
6" SE = 83.5

AS BUILT
CATCH BASIN
RIM = 94.65
12" SW = 87.8
12" N = 89.6

AS BUILT
CATCH BASIN
RIM = 94.69
12" S = 89.9

AS BUILT
MAN HOLE
RIM = 94.89
15" S = 83.0
15" N = 83.0
12" NE = 97.5
12" E = 97.5

A.B. 22 LF

142.6 LF A.B.

143 LF A.B.

A.B. 11.7 LF

A.B. 52.6 LF

10.4 LF A.B.

197.8 LF A.B.

30.7 LF A.B.

A.B. 47.4 LF

30.4 LF A.B.

10.4 LF A.B.

9.8 LF A.B.

AS BUILT
MAN HOLE
RIM = 98.72
15" N = 84.1
15" S = 84.1
12" SW = 91.6

STATION	LOCATION OF CROWN FROM HIGH SIDE	ELEVATION
27+30	12"	94.49
27+50	12"	94.49
28+00	12"	94.49

AS BUILT
CATCH BASIN
RIM = 94.49
12" S = 87.8

AS BUILT
CATCH BASIN
RIM = 94.11
12" SW = 87.3
12" N = 87.7

AS BUILT
CATCH BASIN
RIM = 94.08
12" S = 97.9

AS BUILT
CATCH BASIN
RIM = 93.50
12" N = 86.7
12" S = 87.1

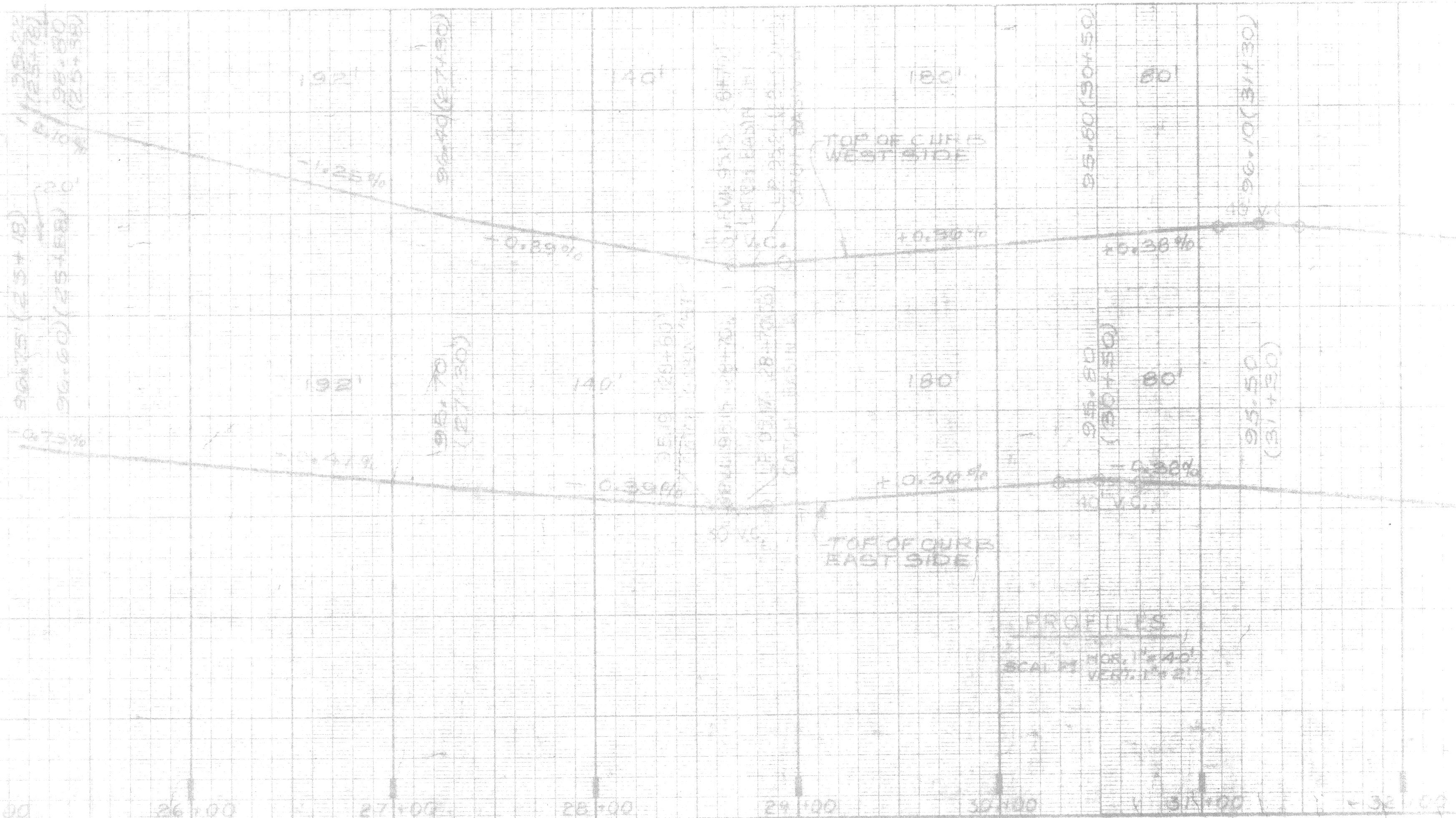
AS BUILT
CATCH BASIN
RIM = 93.54
12" S = 87.4
12" N = 87.1

AS BUILT
CATCH BASIN
RIM = 94.41
12" W = 88.1
12" N = 88.5

GRATE AND SIGHTING DETAILS

LONGITUDINAL BULKHEAD CONSTRUCTION
ELEVATION FROM LAKE 715 JETTY

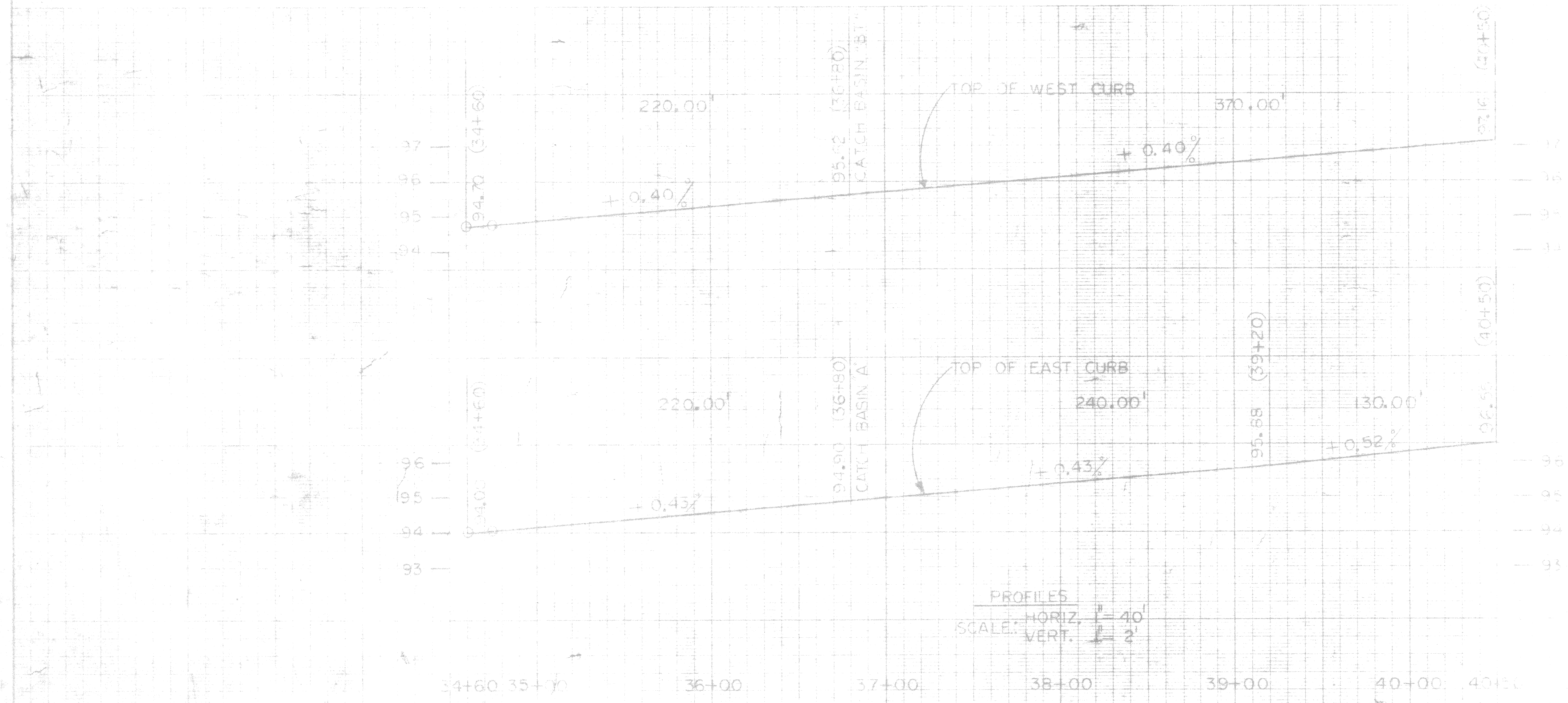
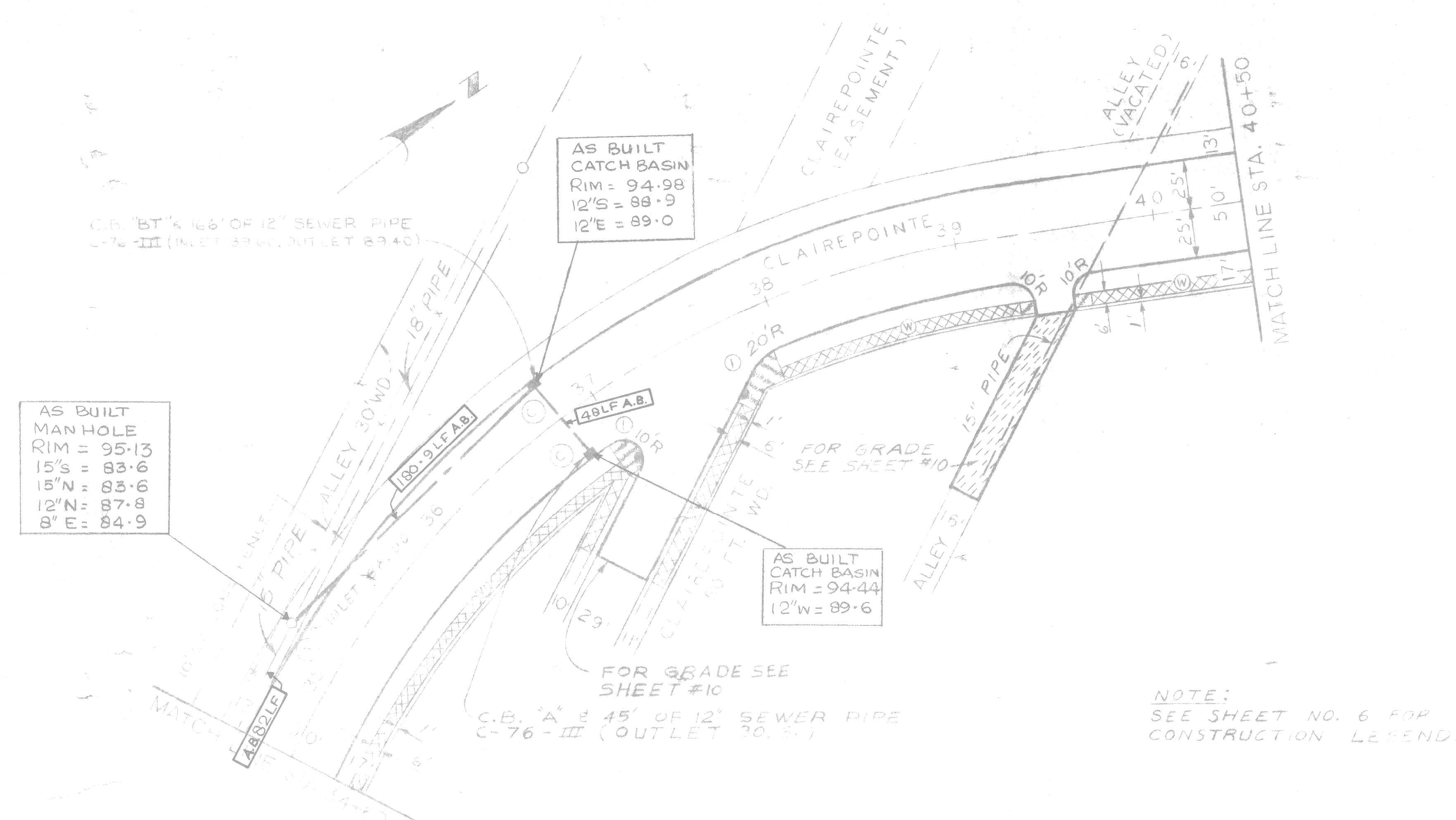
AS BUILT DISTANCES AND
ELEVATIONS PREPARED BY
METCO SERVICES, INC.
AS OF 18 MAY 1989



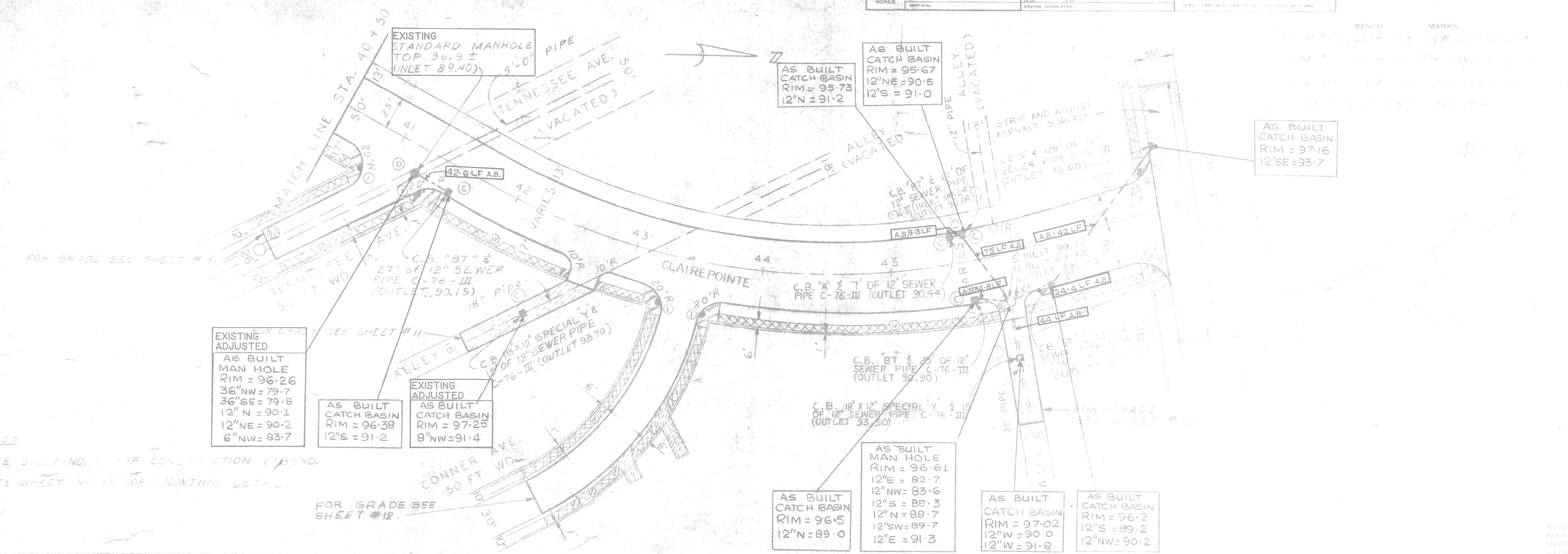
DESIGNED BY	JONES	N.H.
CHECKED BY		N.W.

APPROVED BY
William J. Jones
ENGINEER

CITY OF DETROIT
CITY ENGINEERING DEPARTMENT
BUREAUS OF STREETS AND HIGHWAYS

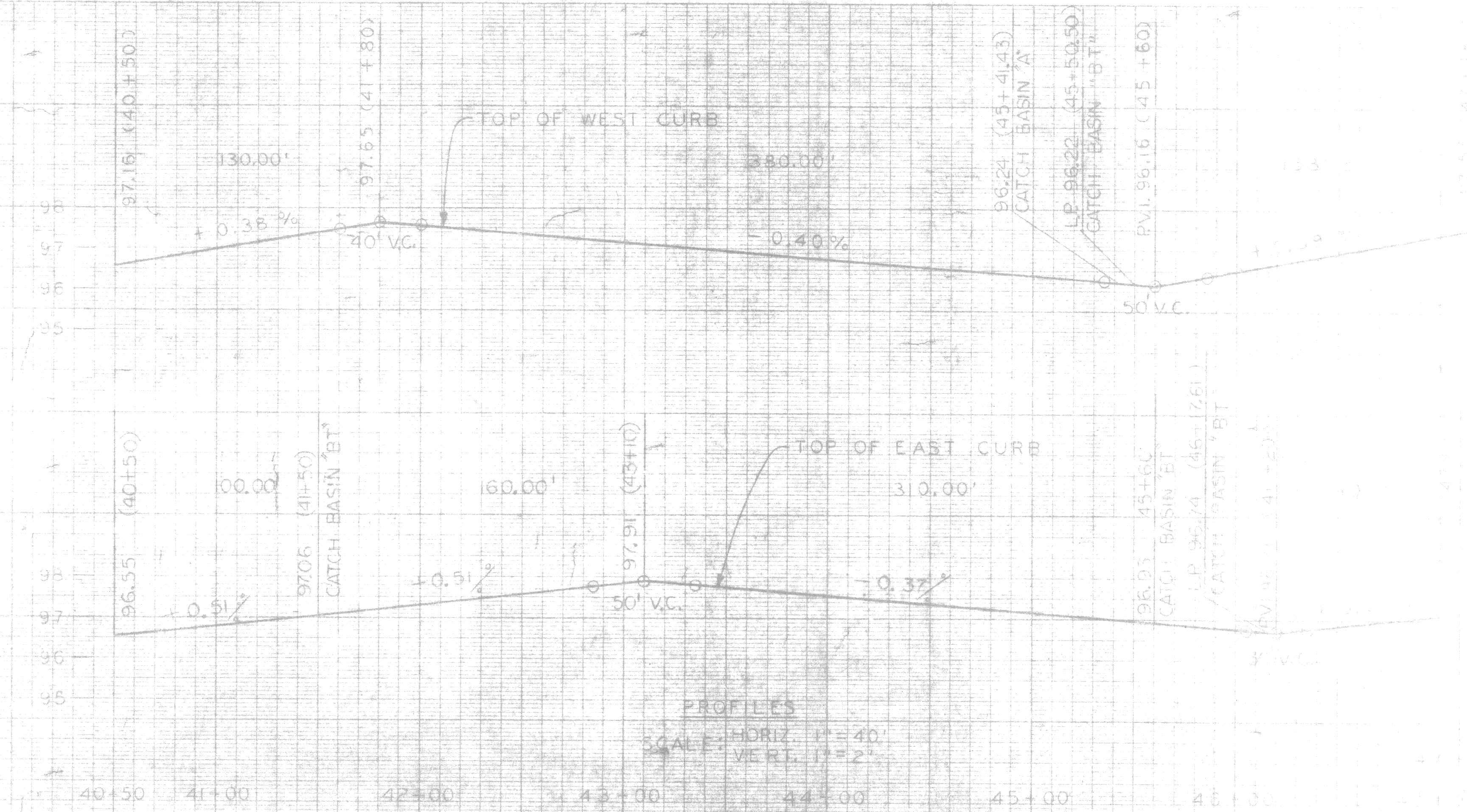


AS BUILT DISTANCES AND
 ELEVATIONS PREPARED BY
 METCO SERVICES, INC.
 AS OF 18 MAY 1989



NOTES:
 1. SEE SHEET NO. 1 FOR CONSTRUCTION LEGEND.
 2. SEE SHEET NO. 12 FOR JOINTING DETAILS.

FOR GRADE SEE SHEET #12



PROFILES
 SCALE: HORIZ. 1"=40'
 VERT. 1"=2'

AS BUILT DISTANCES AND ELEVATIONS PREPARED BY METCO SERVICES, INC. AS OF 18 MAY 1989

PLAN GRADE ESTIMATE FINAL	BY <i>R. J. [Signature]</i>	CHECKED BY N. W.	APPROVED <i>William R. Talley</i> ENGINEER OF STREETS	CITY OF DETROIT CITY ENGINEERING DEPARTMENT BUREAUS OF STREETS AND HIGHWAYS	PAVING OF CLAIREPOINTE AND MICHIGAN NEIGHBORHOOD
	N. W.	N. H.	HIGHWAY ENGINEER		
	D. U.	HIGHWAY ENGINEER	HIGHWAY ENGINEER		
	D. U.	HIGHWAY ENGINEER	HIGHWAY ENGINEER		

