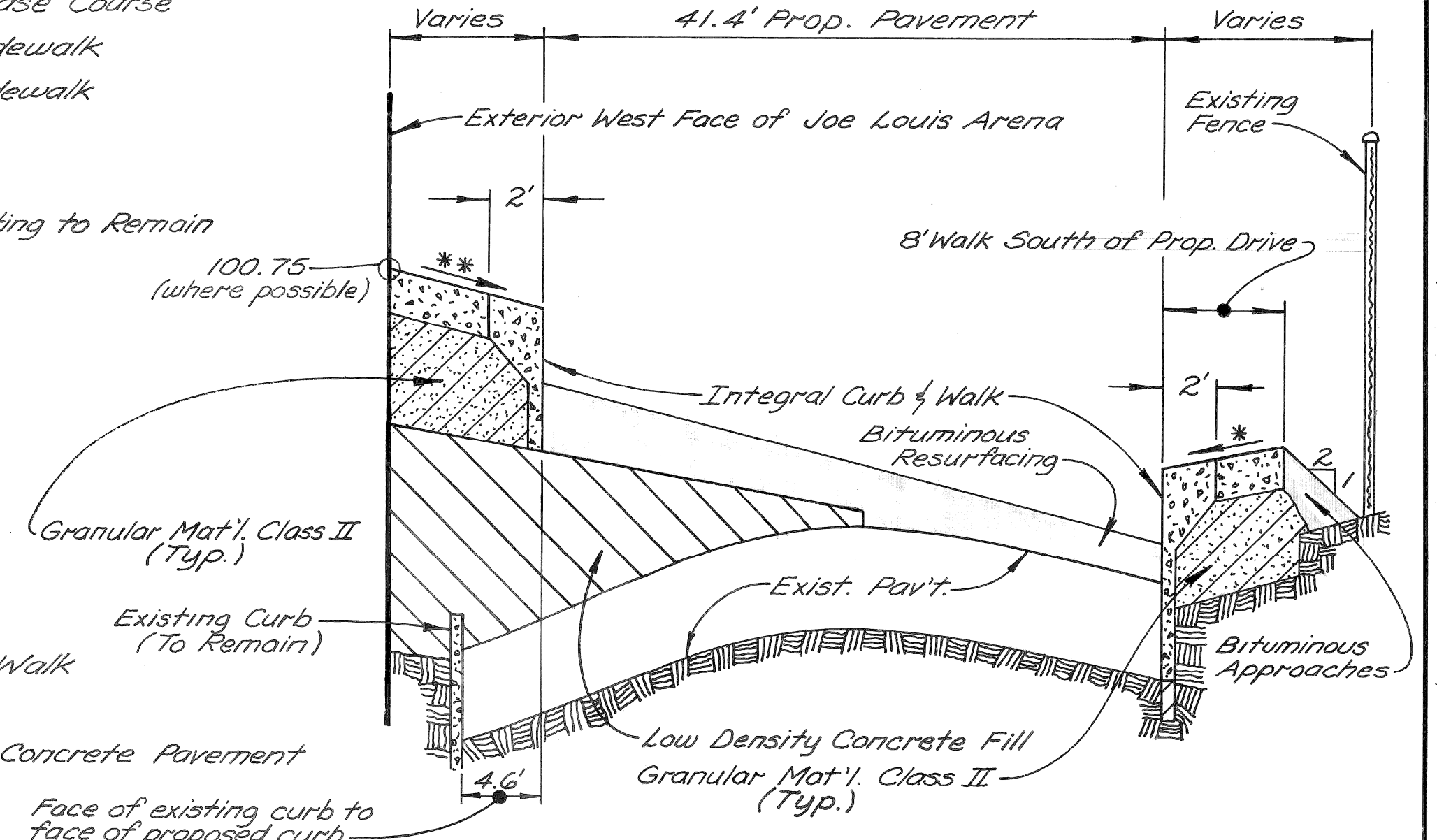
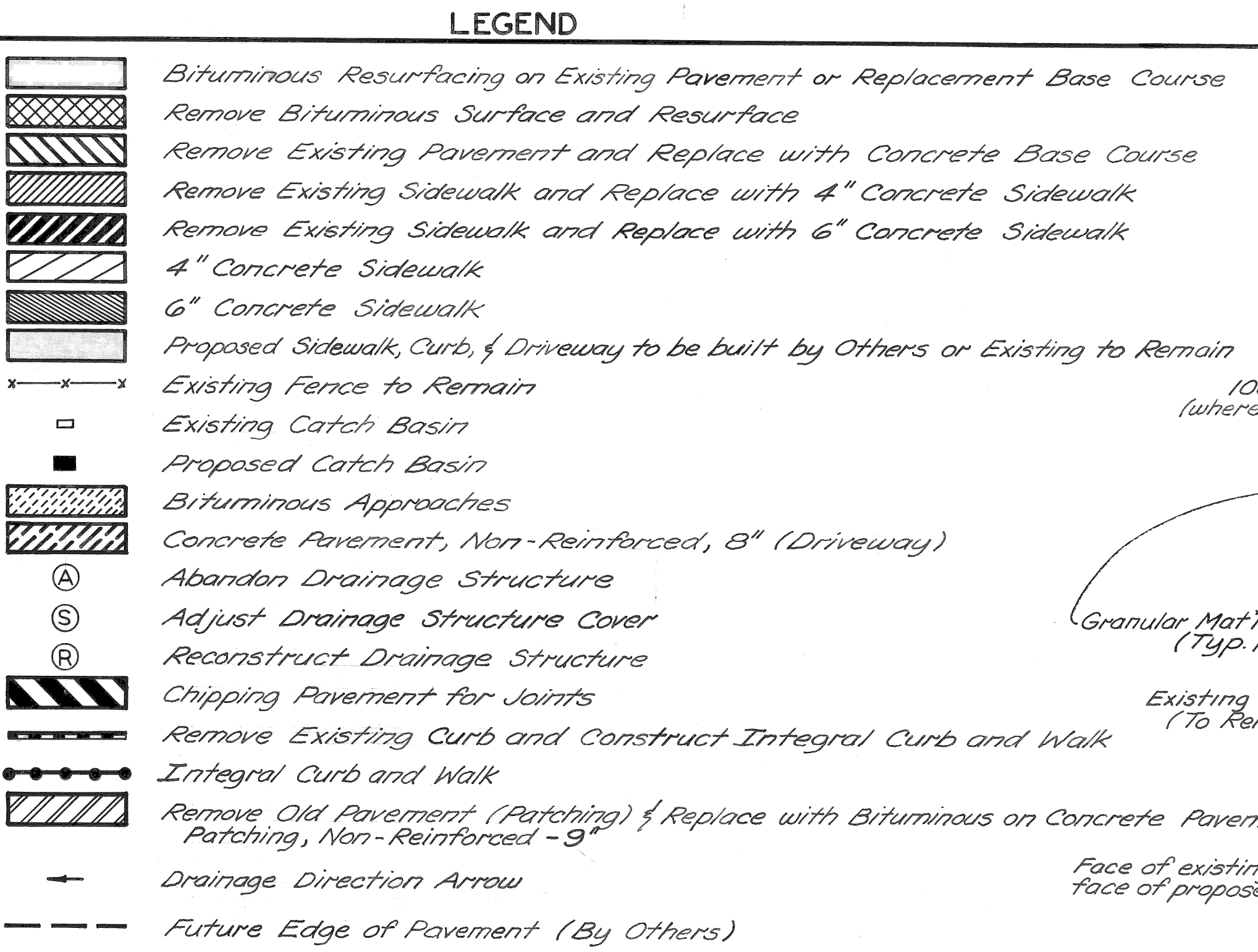
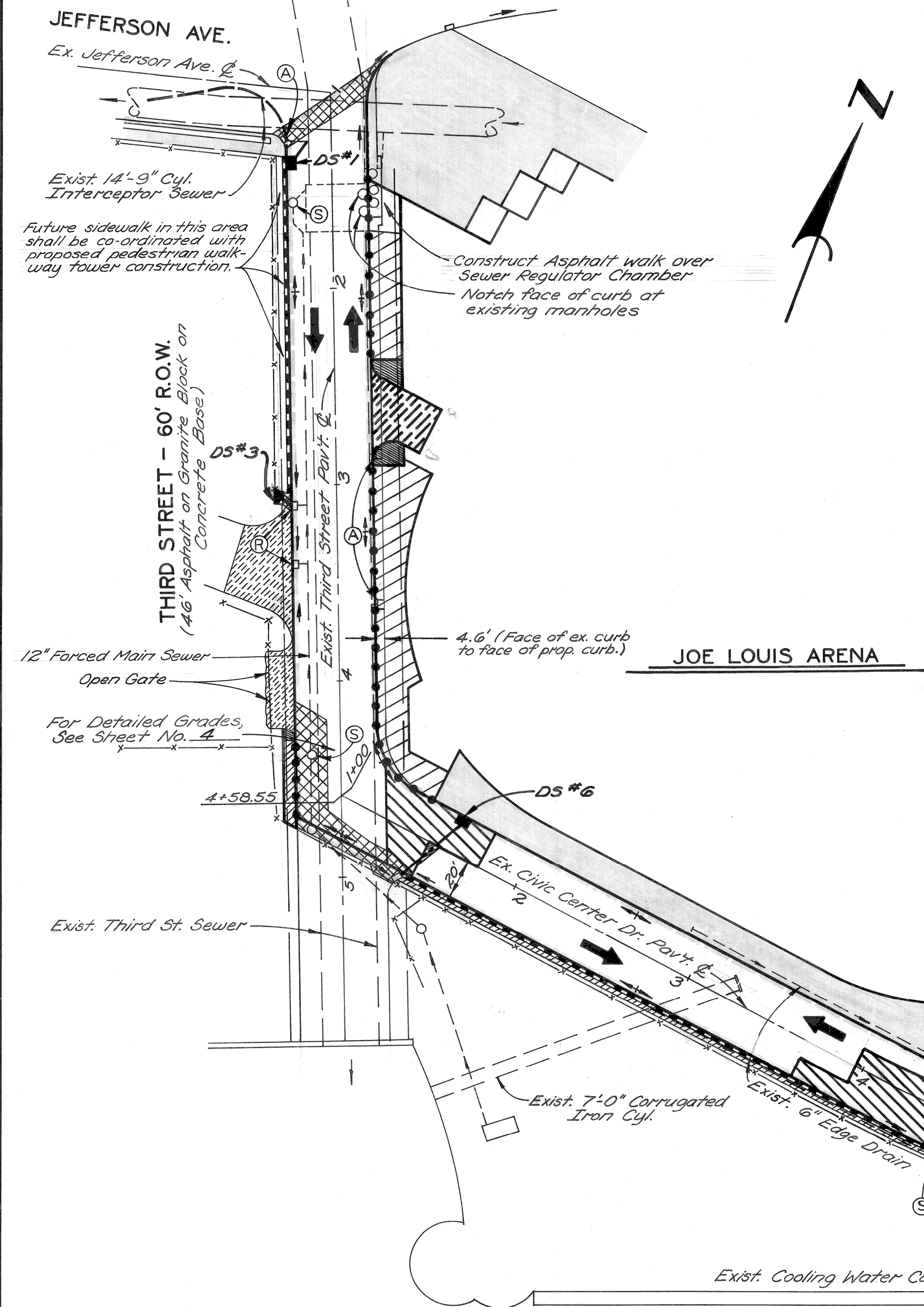


P.B.M. 28-350 S.E. Corner Fort & 10th Street Elev. 113.13
 P.B.M. 28-356 East Side 3rd - & Jefferson W. Elev. 100.217
 C.B.M. Arrow on First Hydrant W. of 3rd, N. Side Jefferson Elev. 103.20



THIRD STREET RESURFACING - TYPICAL X-SECTION

(Looking South - No Scale)
 * - Slope proposed sidewalk on West side of Third at 3/8\"/>

DRAINAGE STRUCT. NO. (DS)	TYPE OF STRUCT.	WITH TRAP (T)	SEWER LENGTH AND TYPE LEAVING DS			SEWER TAP SIZE IN.	TRENCH DET. LIN. FT.		COMMENTS
			LENGTH FT.	SIZE IN.	CLASS		8	9	
1*	C.B."B"	T	15	12	C-76-III			15	Use ex. inlet into Third St. sewer if possible.
2*	C.B."E"		20	12	C-76-III			20	Deleted
3*	C.B."L"		15	12	C-76-III			15	See General Notes No. 5
4*	C.B."G"		27	12	C-76-III			27	Deleted
5*	C.B."G"	T	22	12	C-76-III	12	10	12	Deleted
6	C.B."A"		44	12	C-76-III			44	See General Note No. 3

* See General Note No. 4

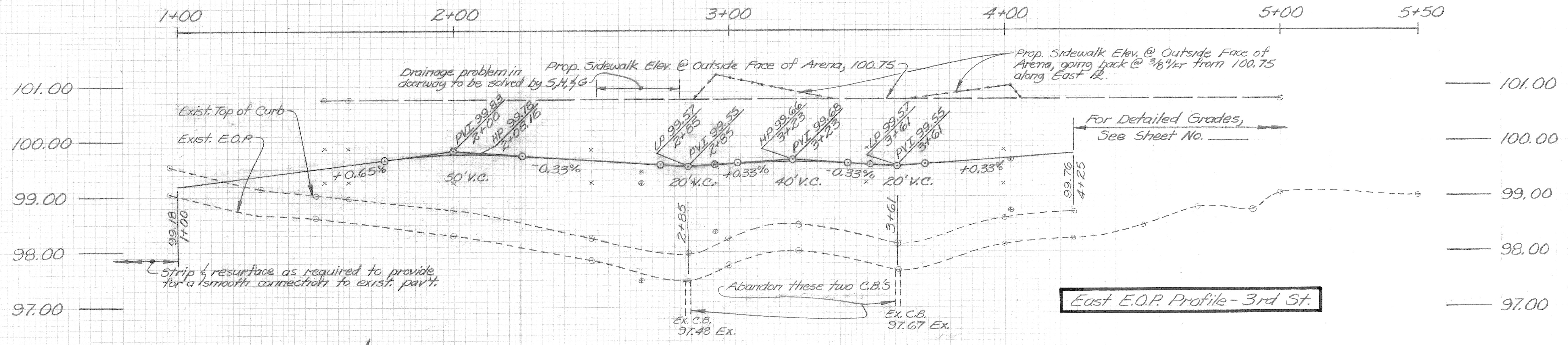
- GENERAL NOTES:**
1. Reconst. two existing catch basins on west side of Third Street (Sta. 3+10 & Sta. 3+40). Provide an inlet from proposed drainage structure #3. Retain existing outlets to Third Street sewer if possible.
 2. Exact location of Drainage Structure #3 shall be coordinated with the resurfacing of Jefferson Ave. de-tour to provide optimum drainage.
 3. If it is impractical to tap into the existing catch basin as shown, either rebuild the existing basin or tap DS #6 directly into the existing Third St. sewer, as determined by the Engineer.
 4. Exact location of proposed Drainage Structures #1 & #3 shall be determined in the field by the Engineer.
 5. The replacement of all sidewalk and driveway removed by P.L.D. along the south side of Civic Center Drive shall be included as part of this job.

DETROIT RIVER
 PLAN
 SCALE: 1" = 40'

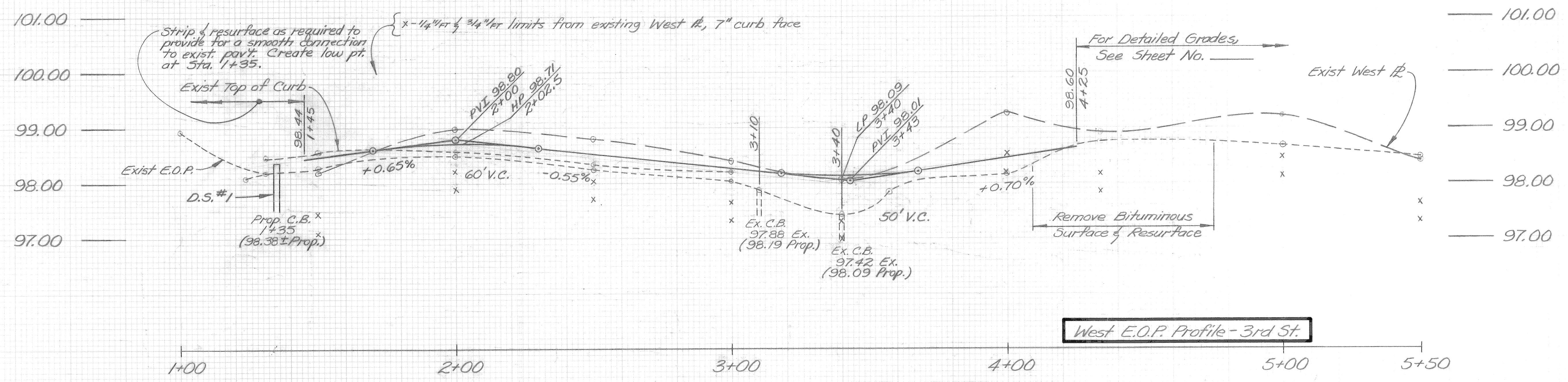
DESIGNED BY	W. Bonus	APPROVED:	
DRAWN BY	W. Bonus	ENGINEER OF STREETS	
TRACED BY		HIGHWAY ENGINEER	
CHECKED BY			

CITY OF DETROIT
 CITY ENGINEERING DIVISION - EPMD
 BUREAU OF STREETS AND HIGHWAYS

CIVIC CENTER DRIVE - THIRD STREET RESURFACING		SHEET 1 OF 8 SHEETS
PLAN		CONTRACT NO.
		ASSIGNMENT NO.
		DATE AUG. 22, 1979

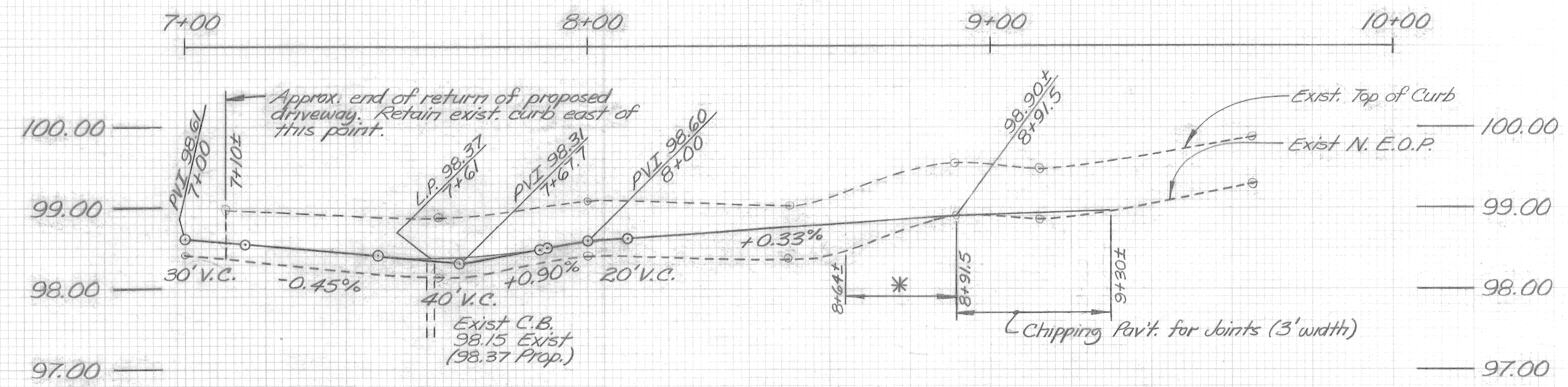
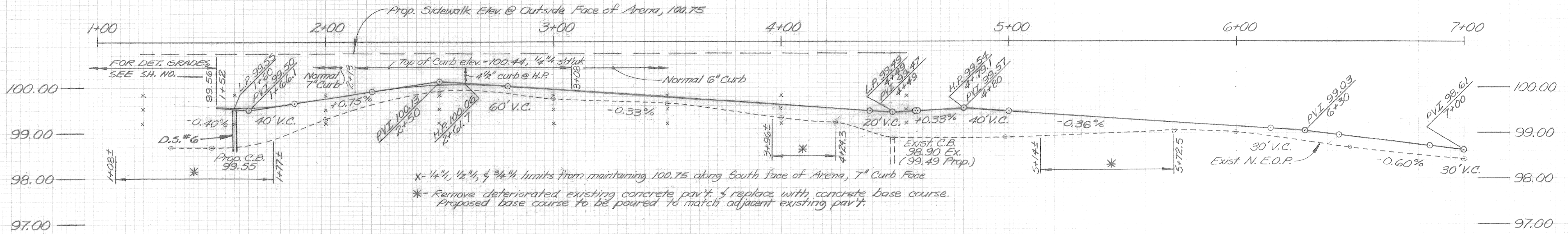


- x - 1/4" per 1/4' limits from maintaining 100.75 along East R., 7" curb face
- o - 1/4" per 1/4' limits from maintaining 100.75 around Arena perimeter, 7" curb face
- * - 1/4" per 1/4' limits from maintaining 100.75 around Arena perimeter, 5" curb face

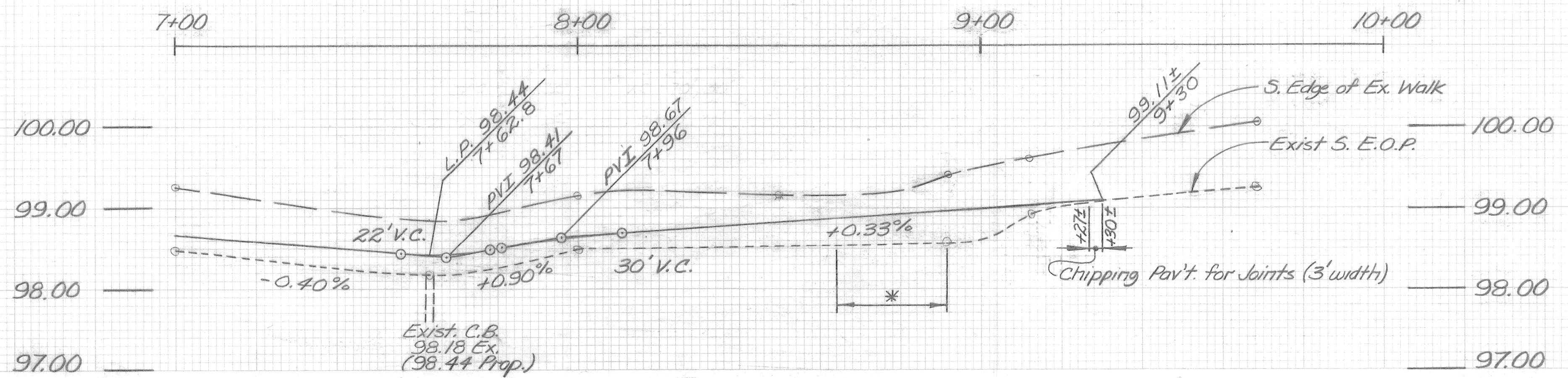
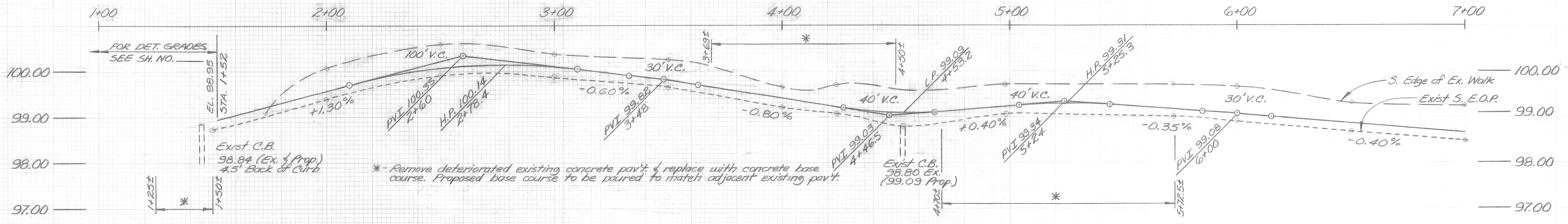


SCALE
 Hor. : 1" = 20'
 Vert. : 1" = 1'

GRADE STUDY FOR 3RD ST. - JEFFERSON TO CIVIC CNTR. DR.



North E.O.P. Profile - Civic Center Drive



South E.O.P. Profile - Civic Center Drive

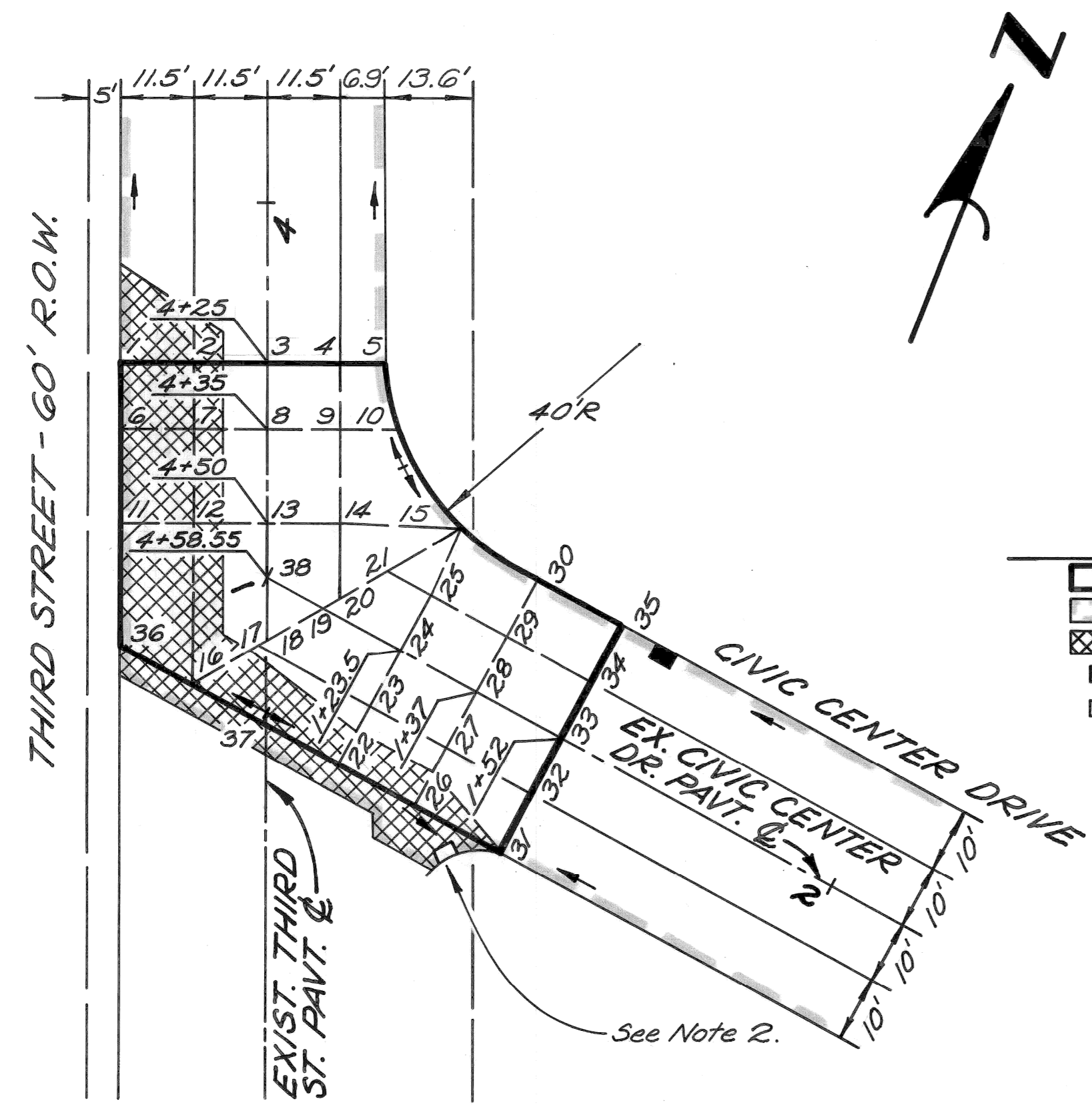
SCALE
Hor. : 1" = 20'
Vert. : 1" = 1'

GRADE STUDY FOR CIVIC CNTR. DRIVE
3RD ST. TO COBO HALL

SCALE	HORIZONTAL	BOOK	LEVEL
	VERTICAL	NO.	DATE
		PG.	CONTRACTOR
		PAVING COMPLETED	MUST CHECK WITH UTILITIES FOR LOCATIONS OF EXISTING STRUCTURES WHETHER OR NOT INDICATED ON PLANS.

NOTE - FOR SYMBOLS (A) ETC., SEE STANDARD DETAIL DRAWING NO. C-4379

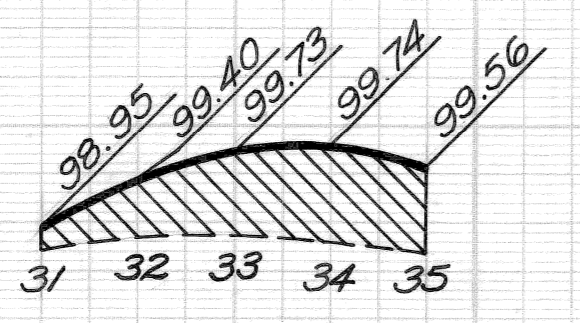
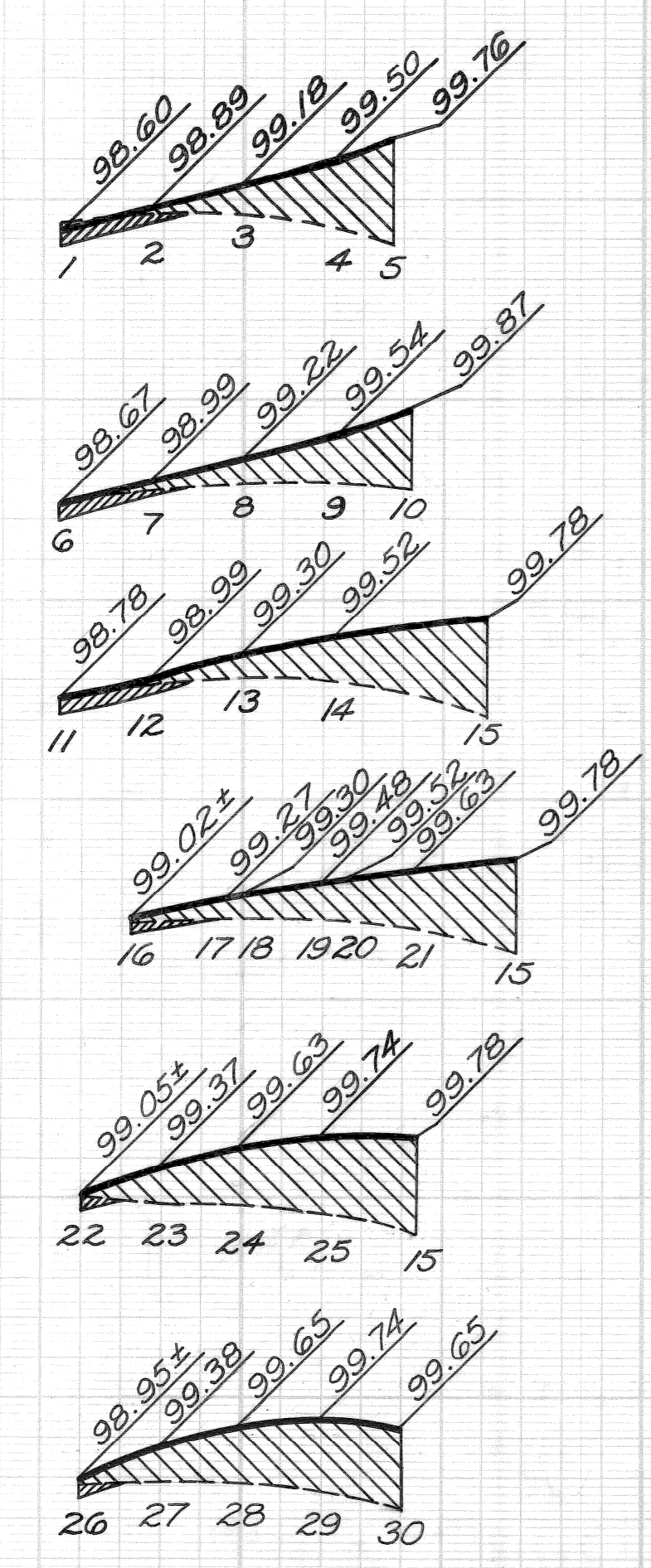
BENCH MARKS ELEV



PLAN LEGEND

- LIMITS OF DETAILED GRADE AREA
- RESURFACE EXISTING PAVT. OR REPLACEMENT BASE COURSE
- REMOVE BITUMINOUS SURFACE & RESURFACE
- PROPOSED CATCH BASIN
- EXISTING CATCH BASIN

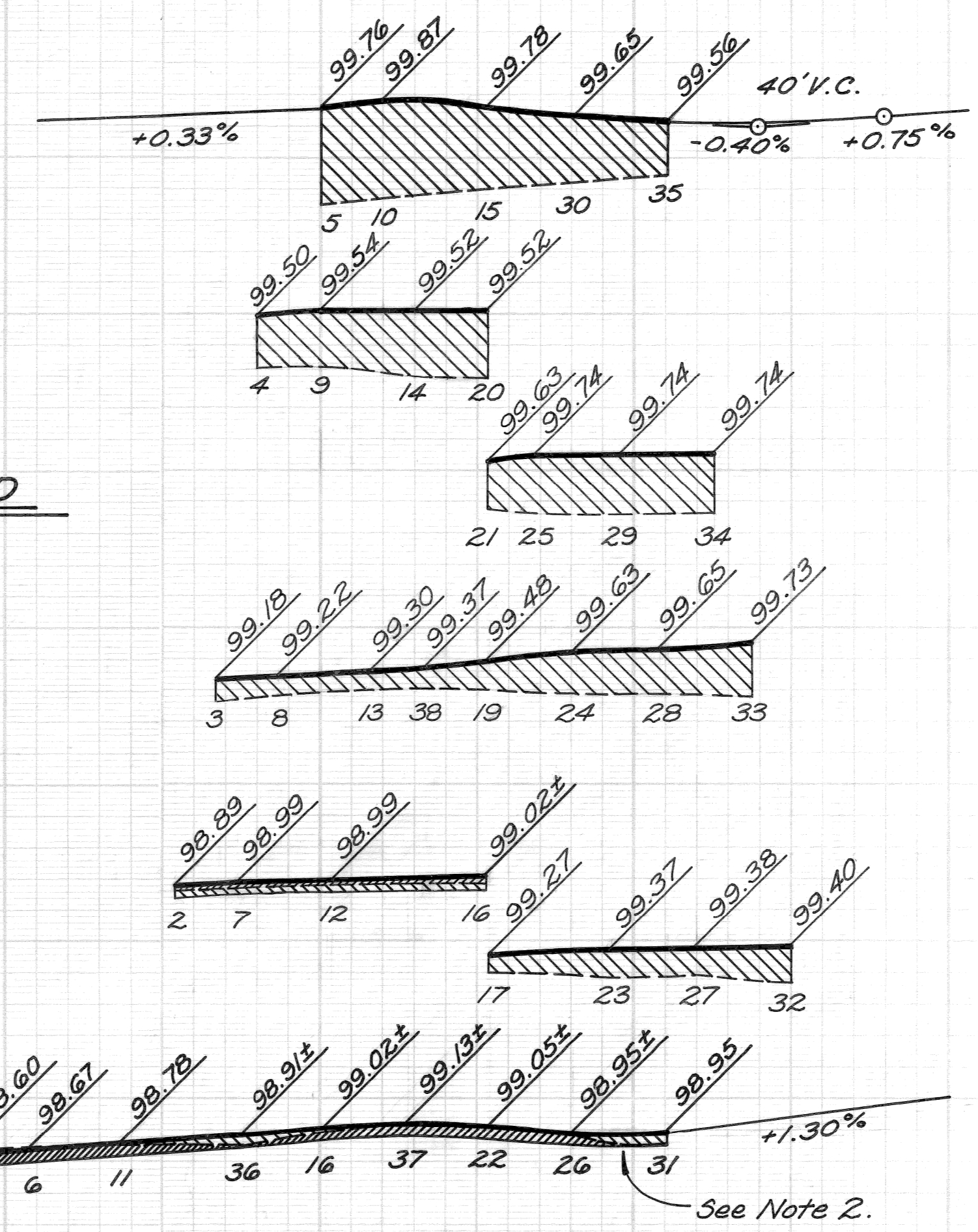
PLAN
SCALE: 1" = 20'



PROFILE & CROSS-SECTION LEGEND

- Existing Pavement Grade
- Proposed Pavement Grade
- Proposed Bituminous Surface
- Remove Bituminous Surface

PROFILES & CROSS-SECTIONS
Scale: Hor. 1" = 20'
Vert. 1" = 2'



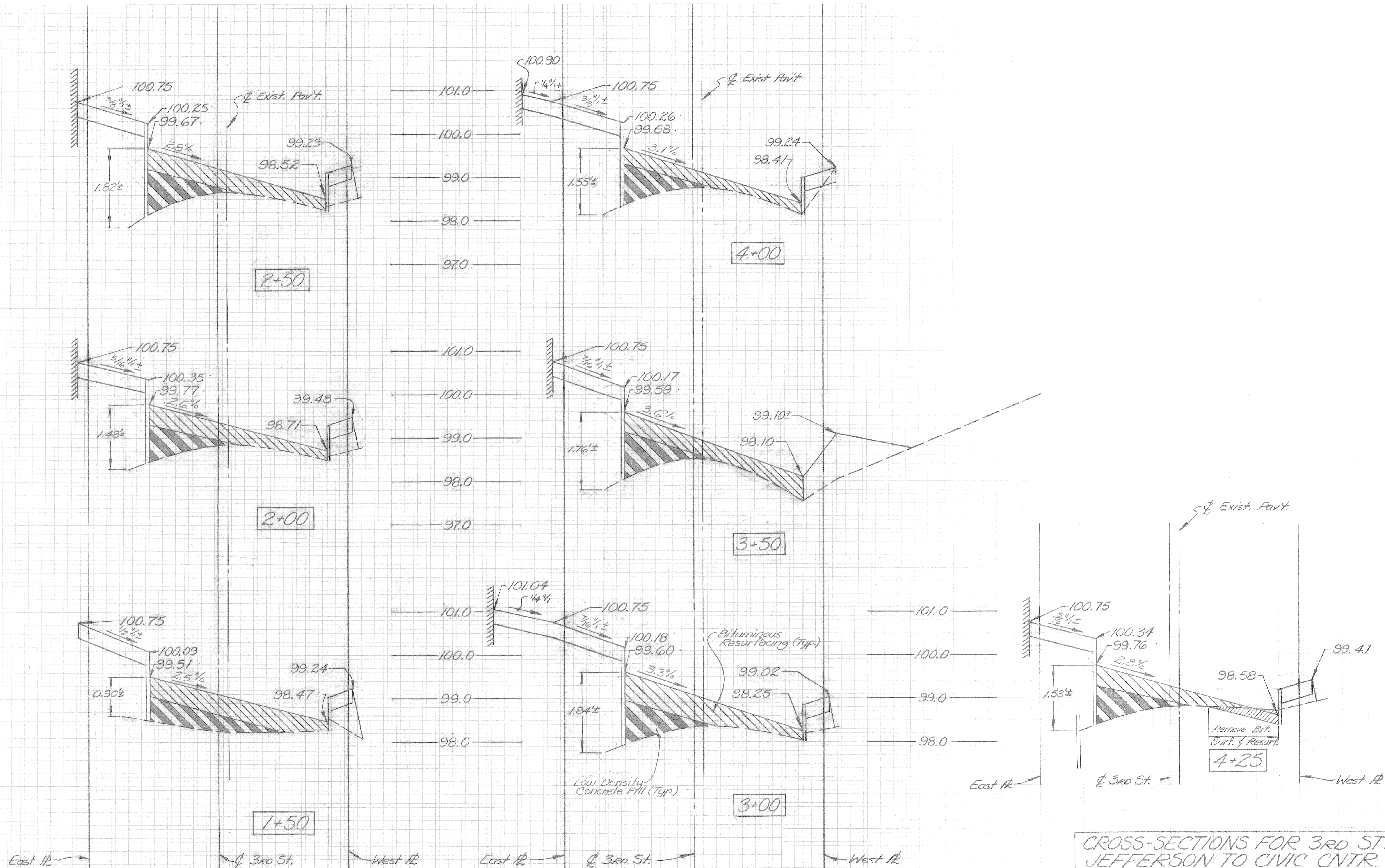
- NOTES:**
- All profiles and cross-sections are drawn true length.
 - Shape bituminous removal and resurfacing in this area to facilitate drainage into existing catch basin. (Existing catch basin elevation = 98.84±)

PLAN	BY	CHECKED BY	APPROVED:
GRADE	W.B.		ENGINEER OF STREETS
ESTIMATE	W.B.		HIGHWAY ENGINEER
DESCRIPTION	DR'N	CK'D	AP'VD
REVISIONS	CHECK	REVIEW	

CITY OF DETROIT
CITY ENGINEERING DEPARTMENT
BUREAUS OF STREETS AND HIGHWAYS

CIVIC CENTER DRIVE - THIRD STREET
RESURFACING
DETAILED GRADES FOR CIVIC CENTER DRIVE AND THIRD STREET

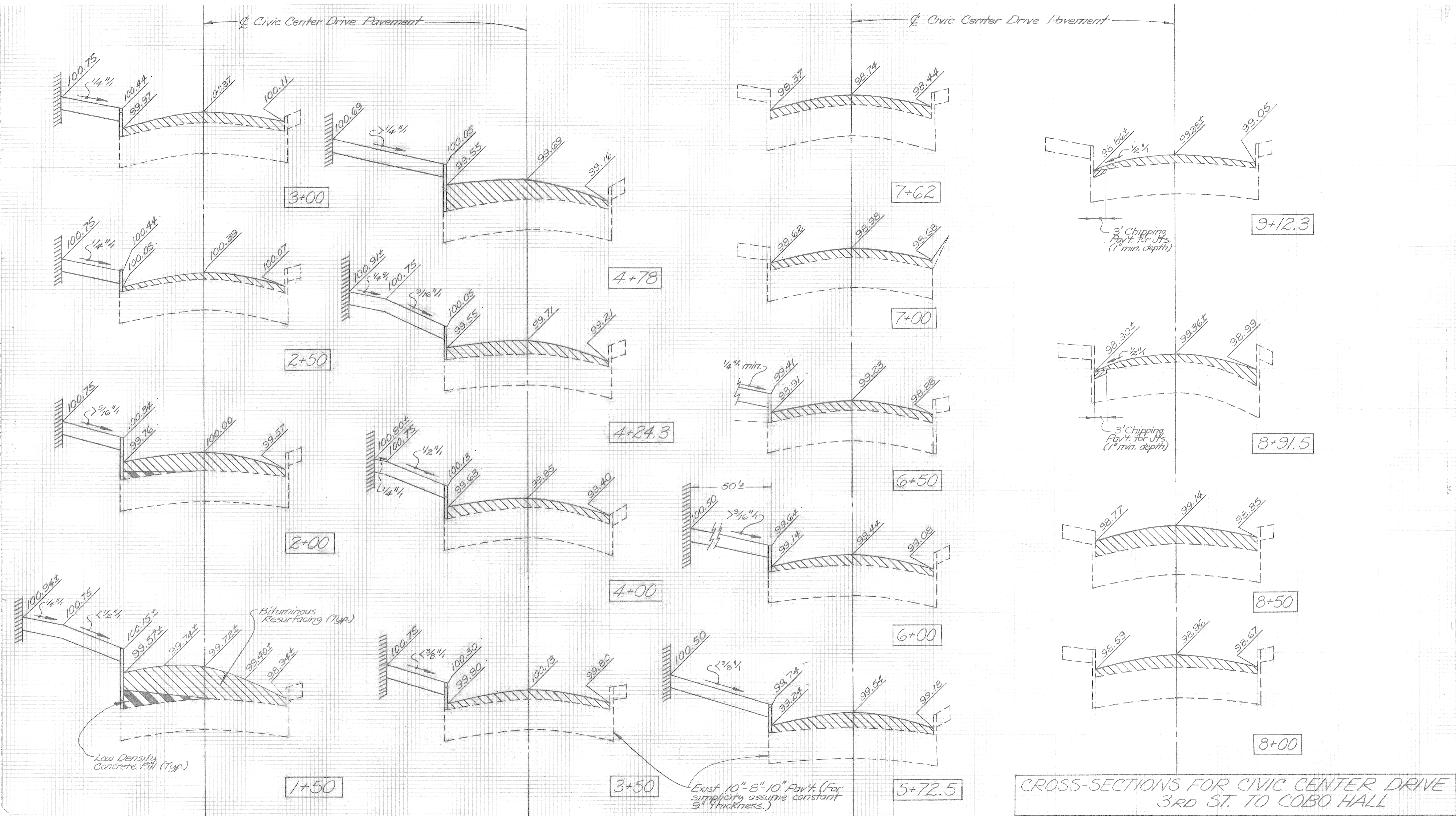
INDEX NO.	SHEET 4 OF 8 SHEETS
CONTRACT NO.	
ASSIGNMENT NO.	
DATE	AUG. 22, 1979



CIVIC CENTER DRIVE - THIRD STREET RESURFACING

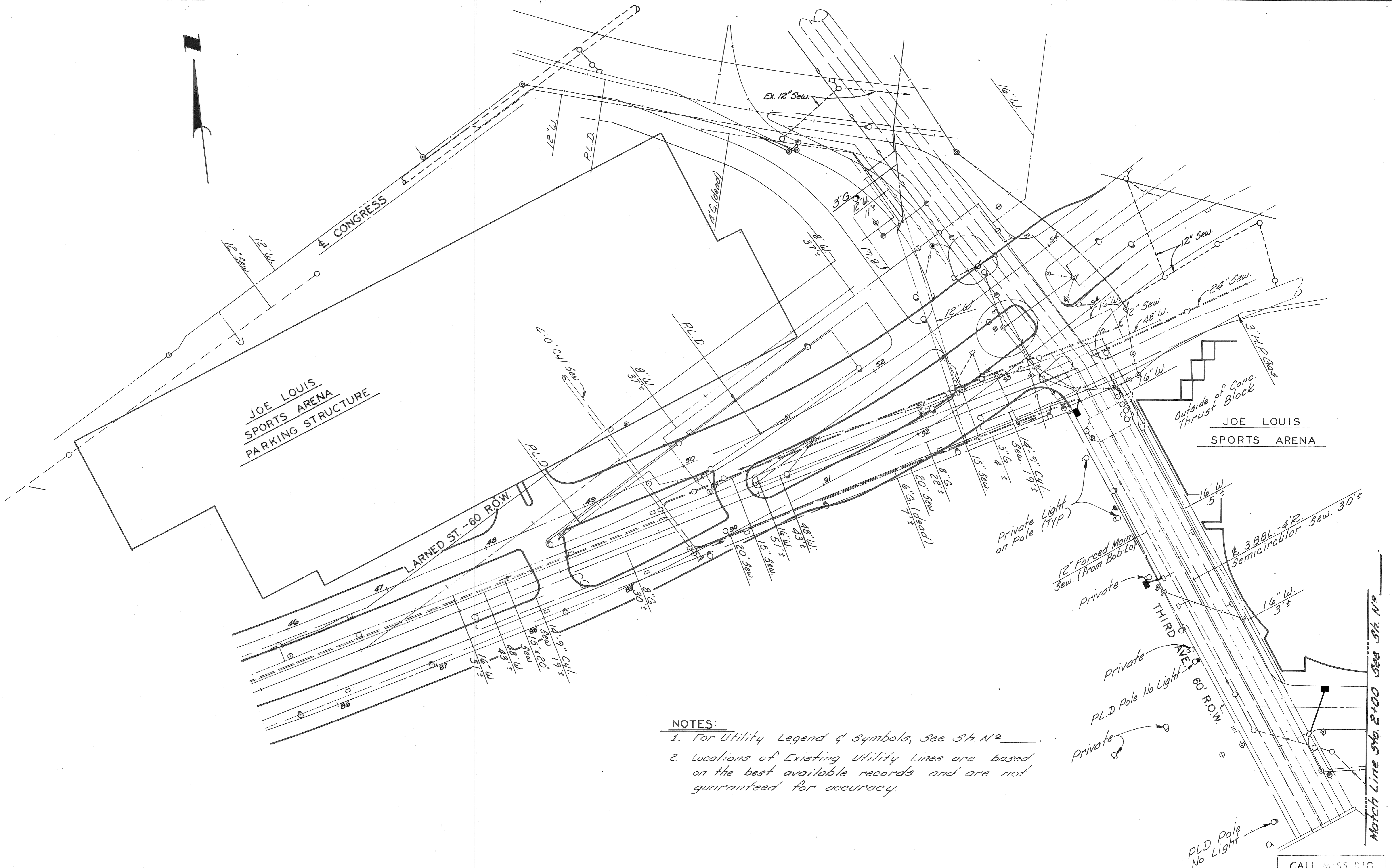
CROSS-SECTIONS FOR 3RD ST. - JEFFERSON TO CIVIC CNTR. DR.

BY W. BONUS



CIVIC CENTER DRIVE - THIRD STREET RESURFACING

BY W. BONUS



NOTES:
 1. For Utility Legend & Symbols, See St. No.
 2. Locations of Existing Utility Lines are based on the best available records and are not guaranteed for accuracy.

SCALE: 1" = 40'

CALL MISS DIG
 48 HOUR NOTICE
 CONSTRUCTION 647 134

<table border="1"> <tr> <td>DESIGNED BY</td> <td></td> </tr> <tr> <td>DRAWN BY</td> <td></td> </tr> <tr> <td>TRACED BY</td> <td></td> </tr> <tr> <td>CHECKED BY</td> <td></td> </tr> </table>		DESIGNED BY		DRAWN BY		TRACED BY		CHECKED BY		<table border="1"> <tr> <td>APPROVED:</td> <td></td> </tr> <tr> <td>ENGINEER OF STREETS</td> <td></td> </tr> <tr> <td>HIGHWAY ENGINEER</td> <td></td> </tr> </table>		APPROVED:		ENGINEER OF STREETS		HIGHWAY ENGINEER		CITY OF DETROIT CITY ENGINEERING DIVISION - EPMD BUREAUS OF STREETS AND HIGHWAYS			CIVIC CENTER DRIVE - THIRD STREET RESURFACING UTILITIES THIRD STREET			SHEET 7 OF 8 SHEETS CONTRACT NO. ASSIGNMENT NO. DATE AUG. 22, 1979	
DESIGNED BY																									
DRAWN BY																									
TRACED BY																									
CHECKED BY																									
APPROVED:																									
ENGINEER OF STREETS																									
HIGHWAY ENGINEER																									
<table border="1"> <tr> <th>COORD</th> <th>DESCRIPTION</th> <th>DRN</th> <th>CK'D</th> <th>APVD</th> <th>DATE</th> </tr> <tr> <td> </td> <td> </td> <td> </td> <td> </td> <td> </td> <td> </td> </tr> </table>		COORD	DESCRIPTION	DRN	CK'D	APVD	DATE																		
COORD	DESCRIPTION	DRN	CK'D	APVD	DATE																				

