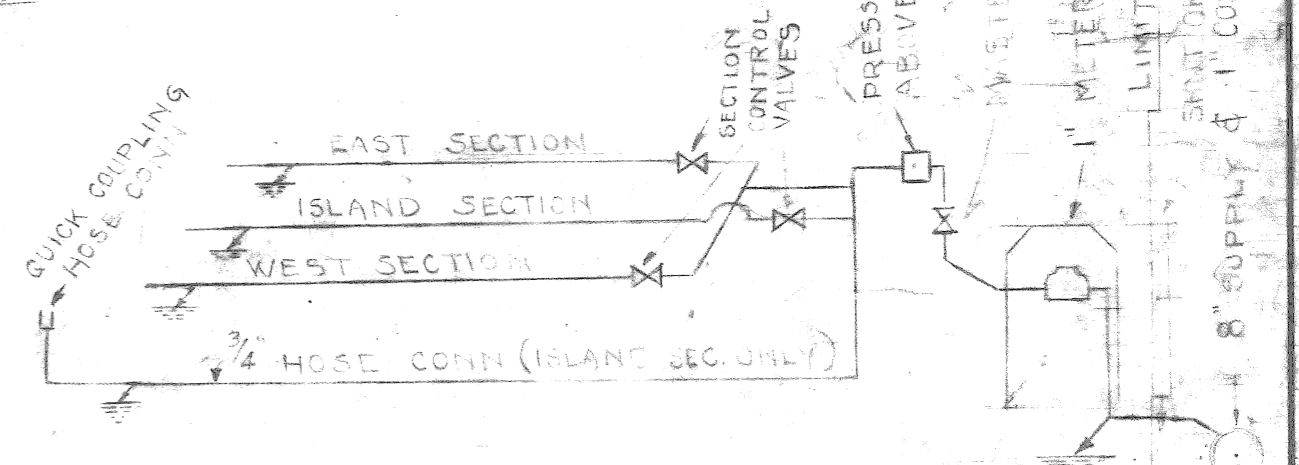
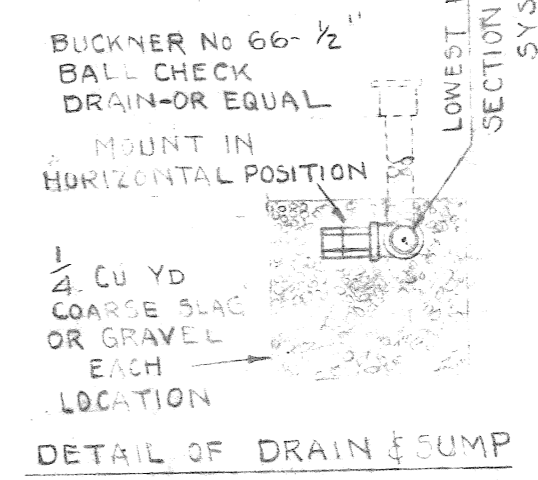
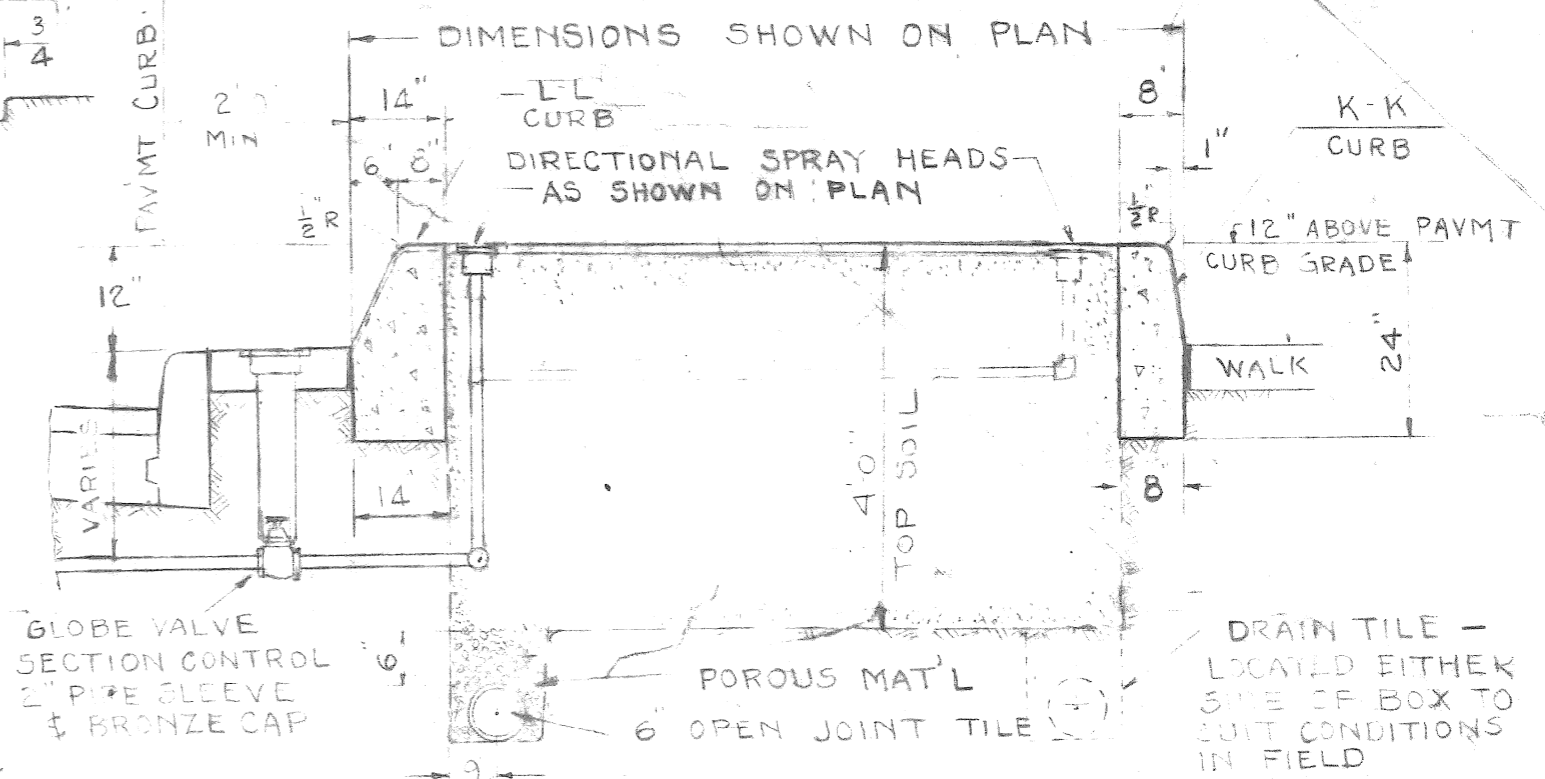


- LEGEND**
- SPRAY HEADS
2 FT RADIUS HALF CIRCLE QUARTER CIRCLE
 - ☒ COLD WATER VALVE-KEY OPERATING WITH ACCESS BOX OR SLEEVE & CAP
 - WATER LINE TYPE L COPPER
 - ☐ VACUUM BREAKER-PRESSURE TYPE
 - ↘ 1/2" BALL CHECK DRAIN VALVE (SEE DETAIL)
 - 6" TILE DRAIN
 - Ⓜ 1" METER IN WABASH BOX
 - ⊗ SERVICE SHUT OFF
 - ⊕ PROPOSED TREE LOCATION
 - ⊙ QUICK COUPLING HOSE CONN



REVISIONS COMPLETE 12-16-58
REVISED AS PER BULLETIN No 4

F				DESIGNED BY CITY PLAN & STREETS & TRAFFIC	APPROVED	<p>CITY OF DETROIT DEPARTMENT OF PUBLIC WORKS CITY ENGINEERS OFFICE</p> <p>WAYNE STREET WIDENING LAFAYETTE BLVD TO MICHIGAN AVE WALKS & PLANTER BOXES MICHIGAN TO ALLEY NORTH OF LAFAYETTE</p> <p>BOOK NO. PG. NO. SCALE 1" = 20 FT DATE MAR 7 1958</p>	<p>SHEET 2 OF 3 SHTS.</p> <p>JOB NO. PN 3426 F</p> <p>DRWG. NO. C-4314-R</p>
E			DRAWN BY H. Smart	<i>Behm</i>			
D			TRACED BY	<i>W. Wallace</i>			
C			CHECKED BY	<i>M. Morgan</i>			
A				CITY ENGINEER			
DESCRIPTION		DRW	CKD	APR	DATE		
REVISIONS							