

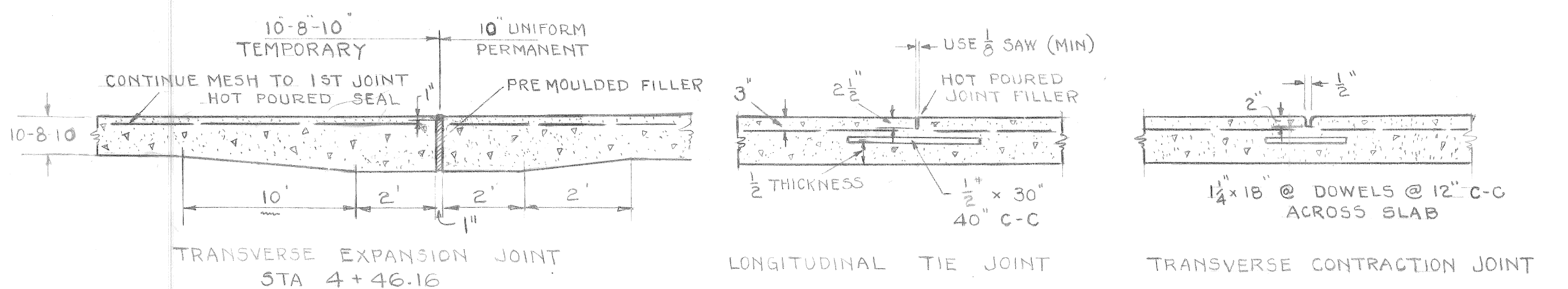
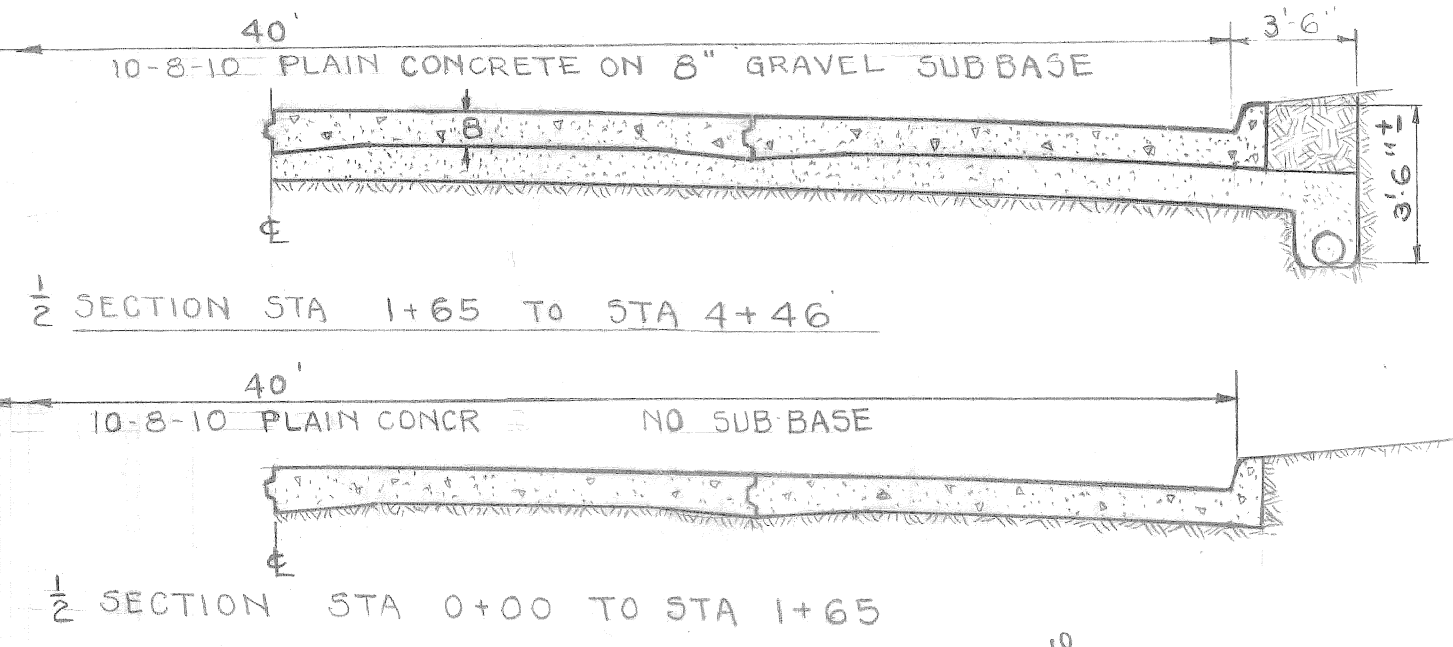
NORTH CURB
 RAD = 40'
 Δ = 61° 45'
 TAN = 23.92
 CHD = 41.05
 ARC = 43.11

SOUTH CURB
 RAD = 10'
 Δ = 118° 45'
 TAN = 16.73
 CHD = 17.17
 ARC = 20.73

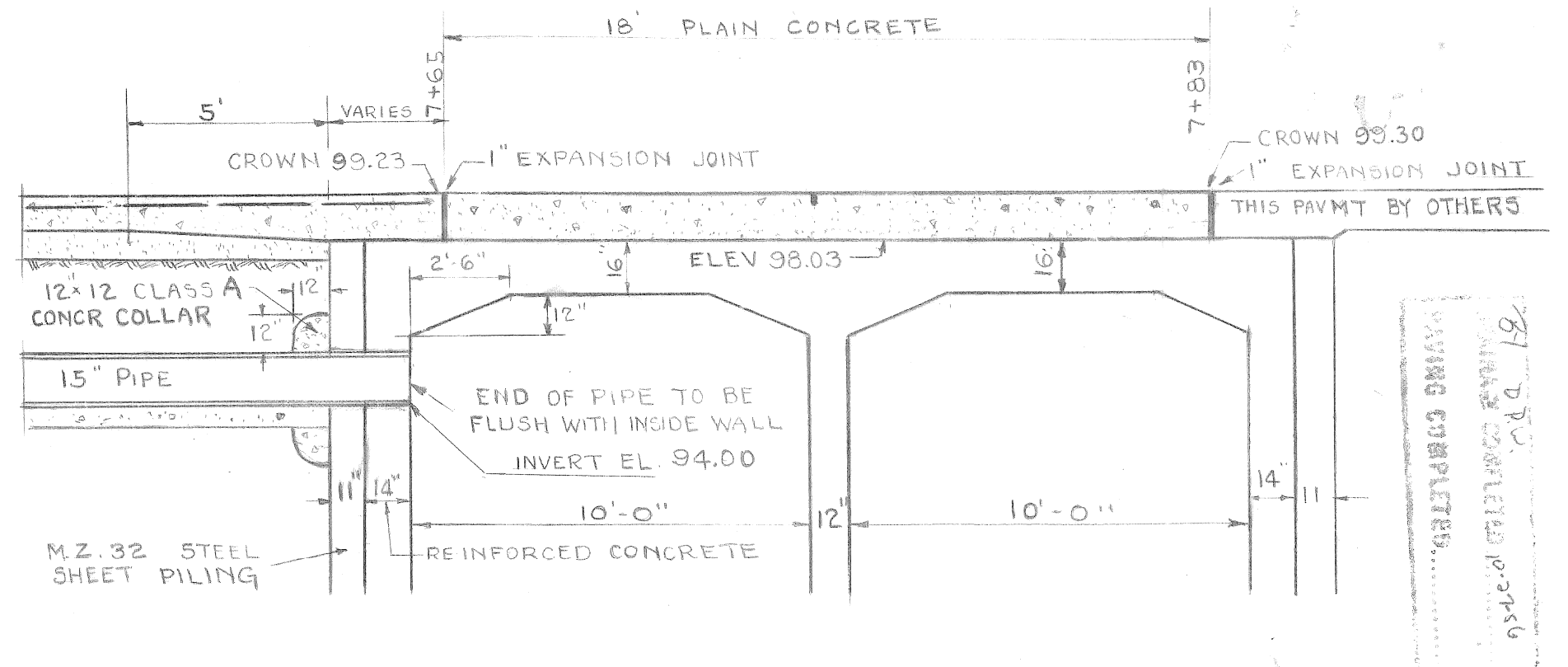
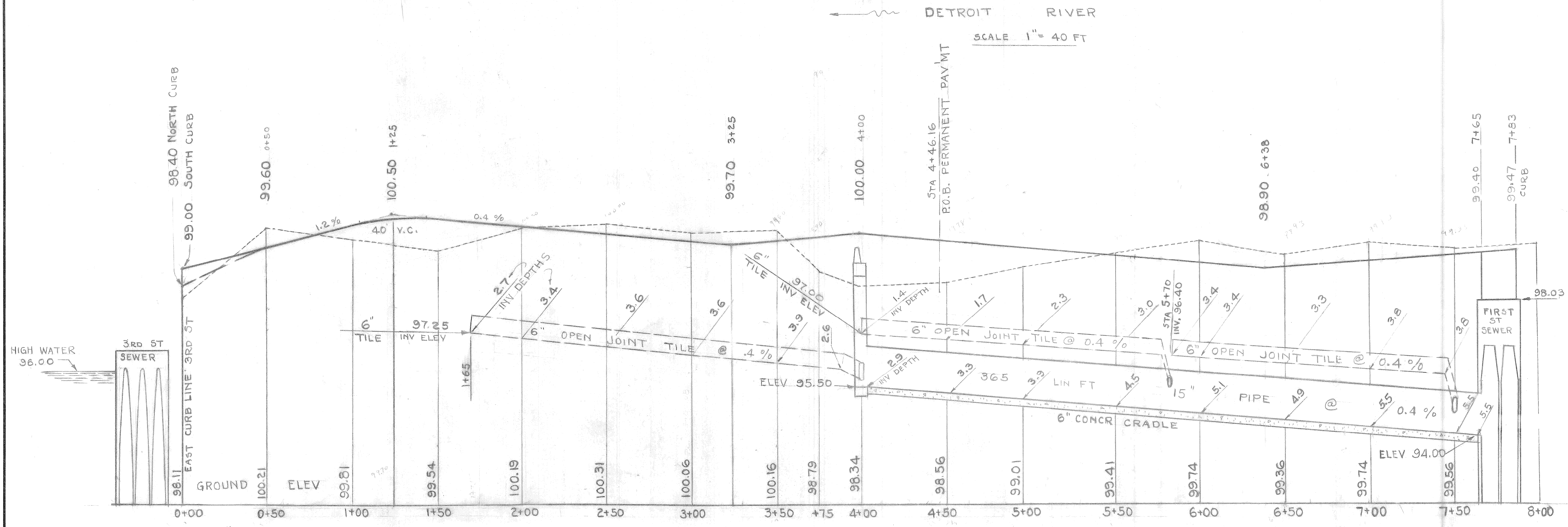
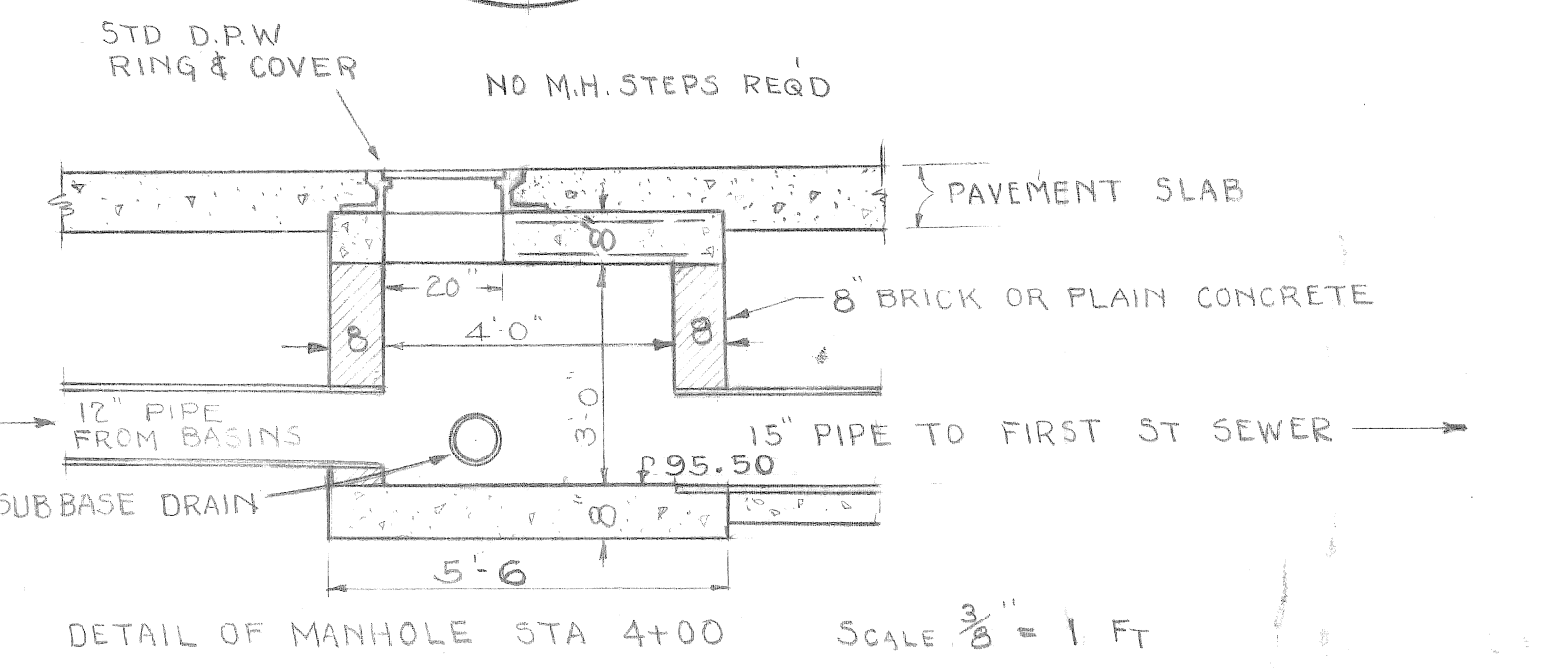
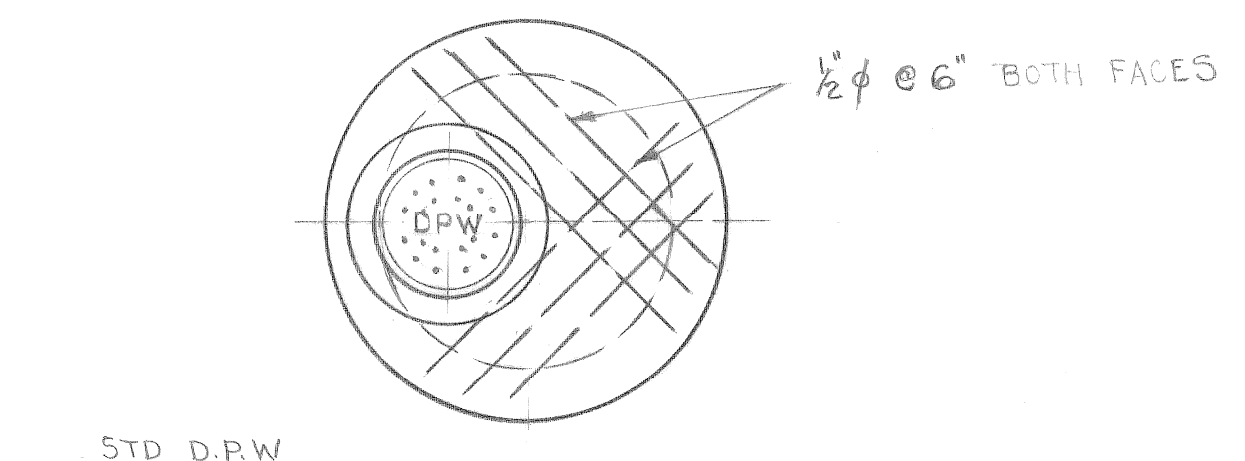
NORTH CURB
 RAD = 280'
 Δ = 27° 54'
 TAN = 69.21
 CHD = 134.21
 ARC = 136.35

SOUTH CURB
 RAD = 320'
 Δ = 27° 54'
 TAN = 78.99
 CHD = 153.38
 ARC = 155.82

TYPICAL X SECTION 10" UNIFORM STA 4+46 TO STA 7+65



X SECTION OVER FIRST ST STORM SEWER STA 7+65 TO STA 7+83



X SECTION ON & ROADWAY OVER FIRST ST. STORM SEWER SCALE 1/4" = 1 FT

B.M. # 28-254 N.W. COR WOODWARD & JEFFERSON → 120.843
 B.M. # 28-253A N.E. COR 2ND & JEFFERSON → 100.155
 FIELD BKs 1686 & 851. B.M. - HARBOR LINE MDN # 39 FOOT OF 3RD ST → 99.68

NO.	DATE	DESCRIPTION
D-6	11/16/54	DROP N. CURB STA 4+97.6 TO 5+88.6 H.S.

DESIGNED BY: *H.G. Smart*
 DRAWN BY: *H.G. Smart*
 TRACED BY:
 CHECKED BY: *[Signature]*

APPROVED: *[Signature]*
CITY OF DETROIT
 DEPARTMENT OF PUBLIC WORKS
 CITY ENGINEERS OFFICE

DETROIT CIVIC CENTER
 TEMPORARY JEFFERSON AVE
 DETOUR ROAD (ATWATER)
 THIRD ST TO 783 EAST

SHEET 1 OF 1 SHEETS
 CONTRACT No. D.P.W.
 DRWG No. C-4089
 DATE JUNE 4, 1956