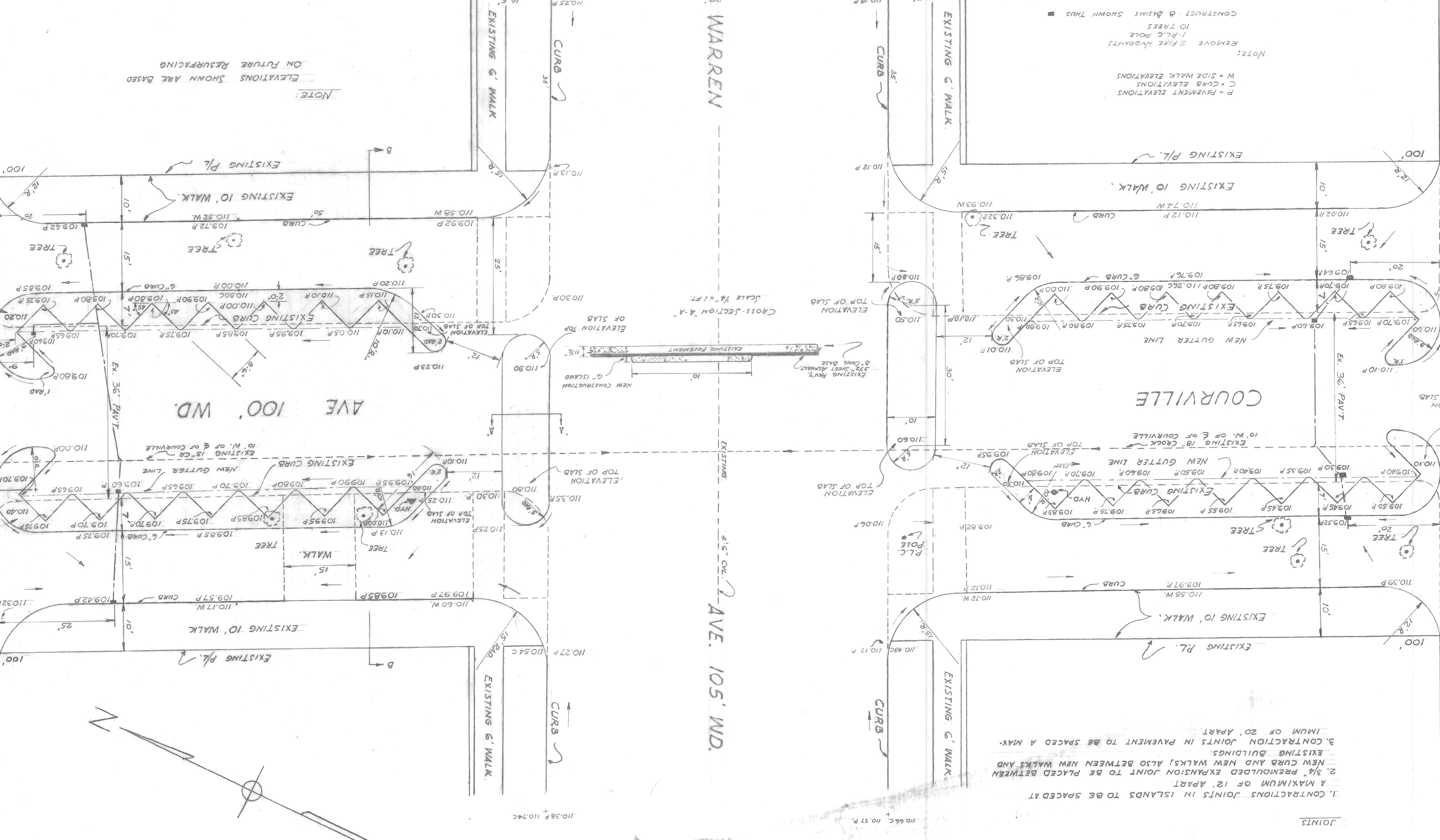


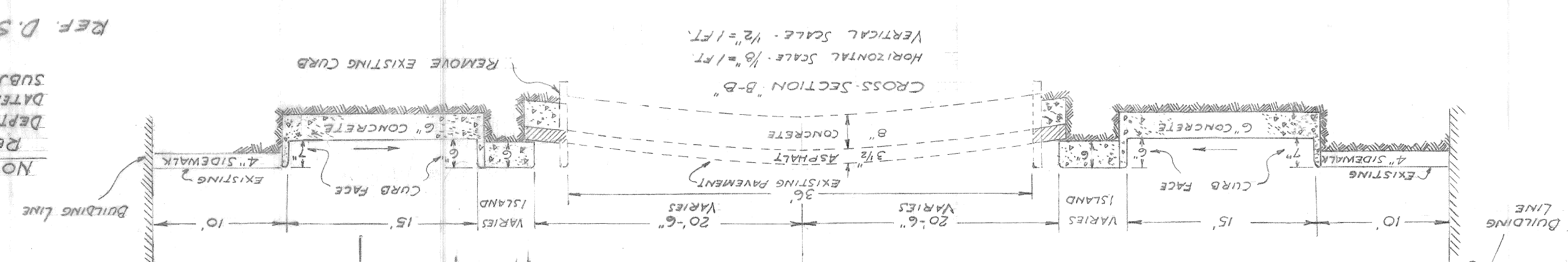
SEPT 21, 1955

COURVILLE AT WARREN EAST PARKING BAYS



DEPT. OF PUBLIC WORKS
CITY ENGINEERS' OFFICE
APPROVED
M. J. [Signature]
ENGINEER OF STREET DESIGN
CITY ENGINEER

REVISIONS AS PER DIRECTIVE OF
DEPT. STREETS & TRAFFIC - SEE LETTER
DATED 10-14-1955 APPROVING PLAN
SUBJECT TO THESE REVISIONS.
REF. D. S. & T. DWG. NO. OF. 23



- JOINTS
1. A MAXIMUM OF 12' APART.
 2. 3/4" REINFORCED EXPANSION JOINT TO BE PLACED BETWEEN NEW CURB AND NEW WALKS; ALSO BETWEEN NEW WALKS AND EXISTING BUILDINGS.
 3. CONTRACTION JOINTS IN PAVEMENT TO BE SPACED AT MINUM OF 20' APART.