

Draw-15

OAKMAN

Book 1288 + Sketch

May 1943

POST 150 6-18-39

C-341

CONTRACT

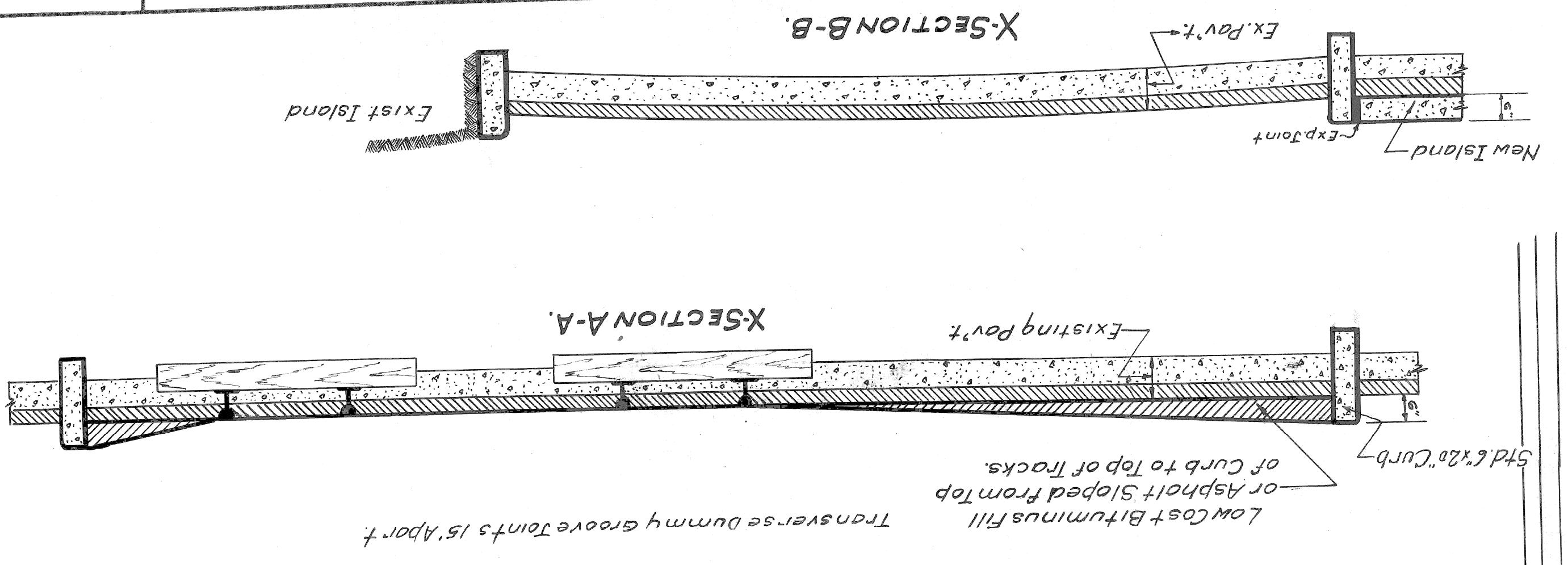
CITY OF DETROIT
DEPARTMENT OF PUBLIC WORKS
BUREAU OF PUBLIC STRUCTURES

PROPOSED CHANNELIZATION OAKMAN BLVD. - W. CHICAGO

NO.	BY	REVISIONS
A		Lots in West Tower with Hotel
B		
C		
D		
E		
F		
G		

DESIGNED BY	DRAWN BY	TRACED BY	CHECKED BY
M. K. Gogol	G. Kogol	M. K. Gogol	M. K. Gogol

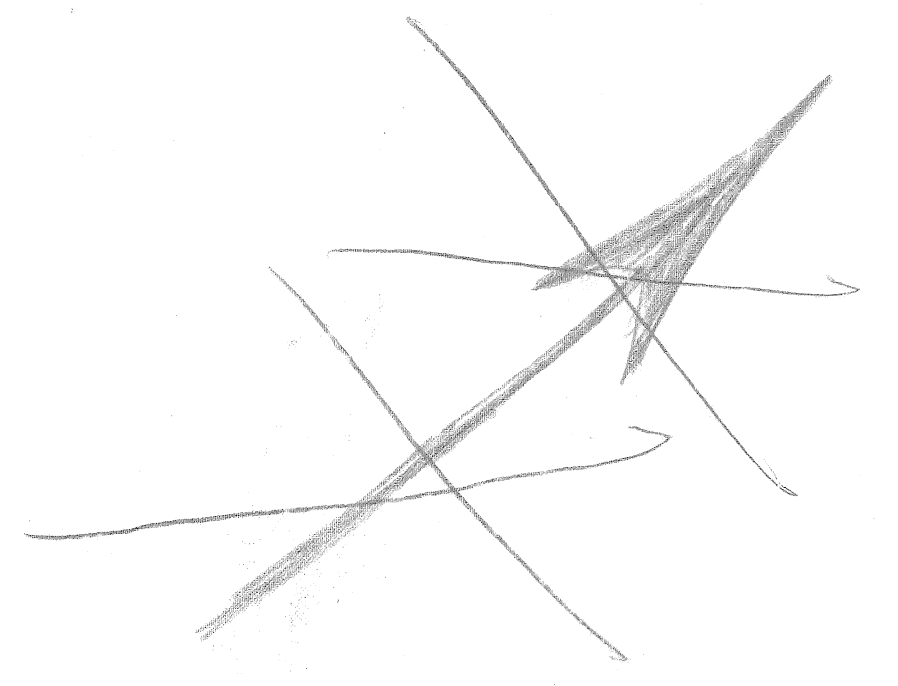
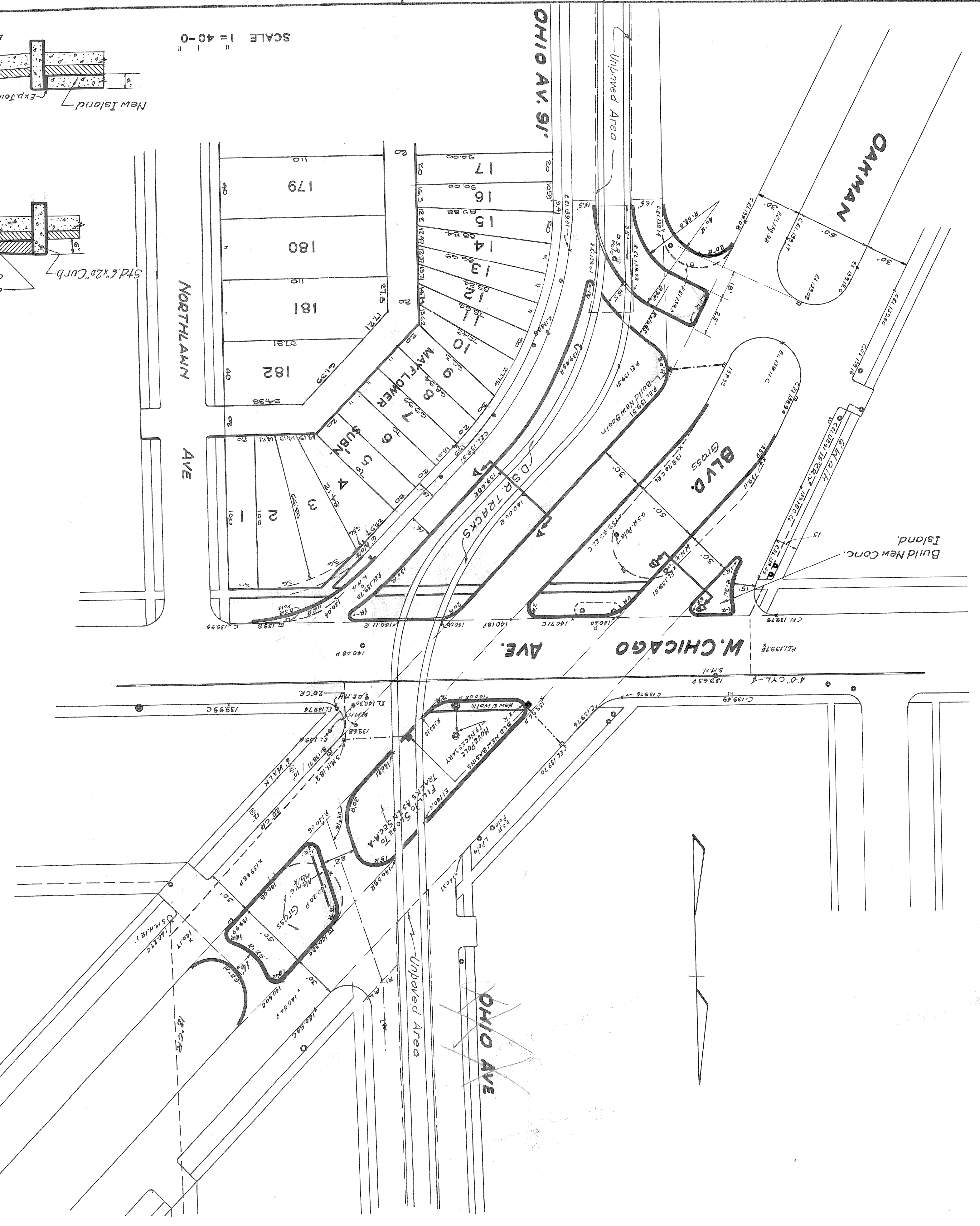
APPROVED	ASSOCIATE ENGINEER	ENGINEER OF PUBLIC STRUCTURES	CITY ENGINEER
[Signature]	[Signature]	[Signature]	[Signature]



SCALE 1" = 40'-0"

SUPERSEDED
SEE SHEET # C-341-A
DATED Sept. 15, 1944

- REMOVE
- NEW WALK
- CURB
- EXISTING SEWER
- PROPOSED
- D.E.M.H. DETROIT EDISON MANHOLE
- S.M.H. SEWER
- EXISTING CATCH BASIN
- NEW
- CURB ELEVATION
- PAV'T
- GUTTER "
- RAIL

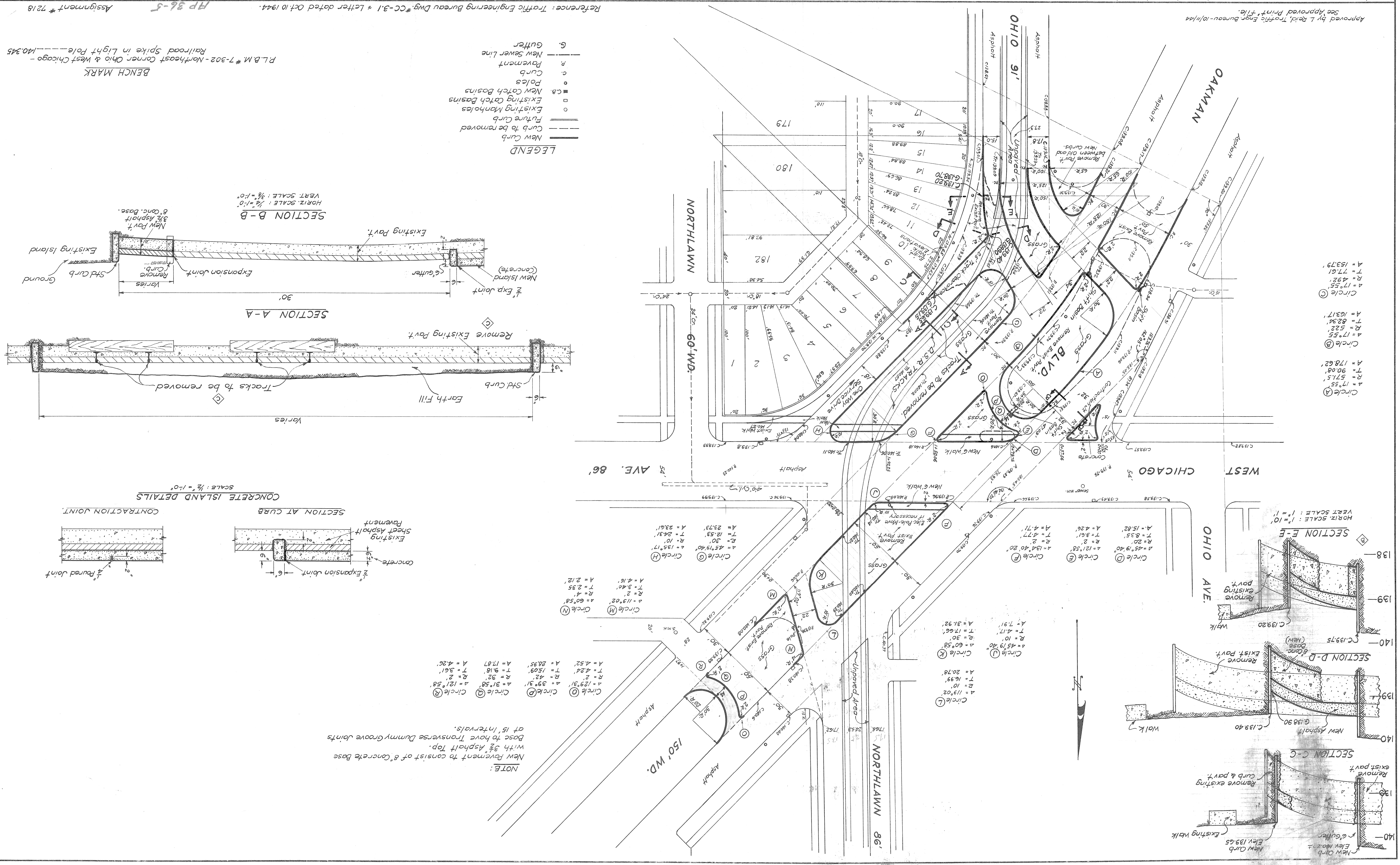


2-14-43

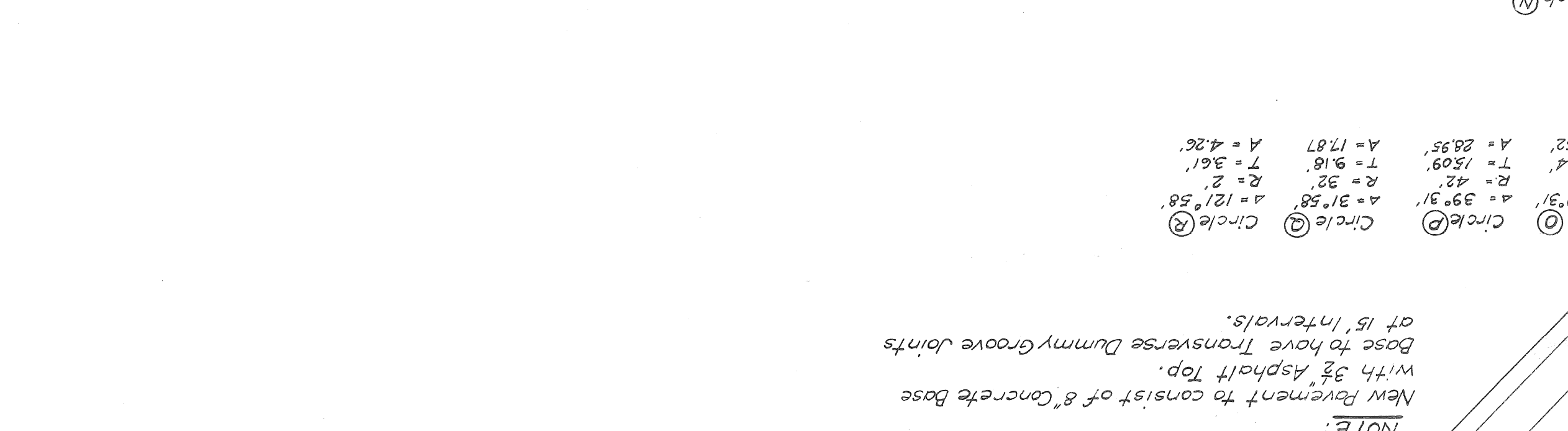
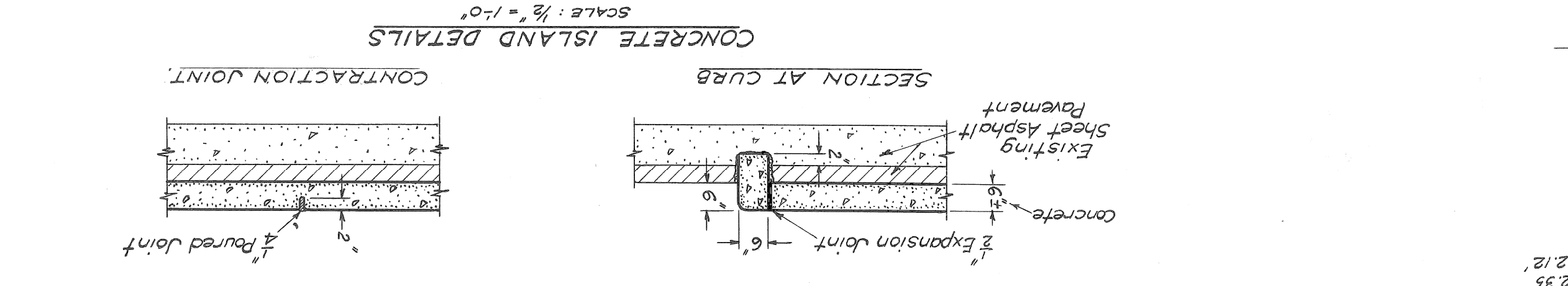
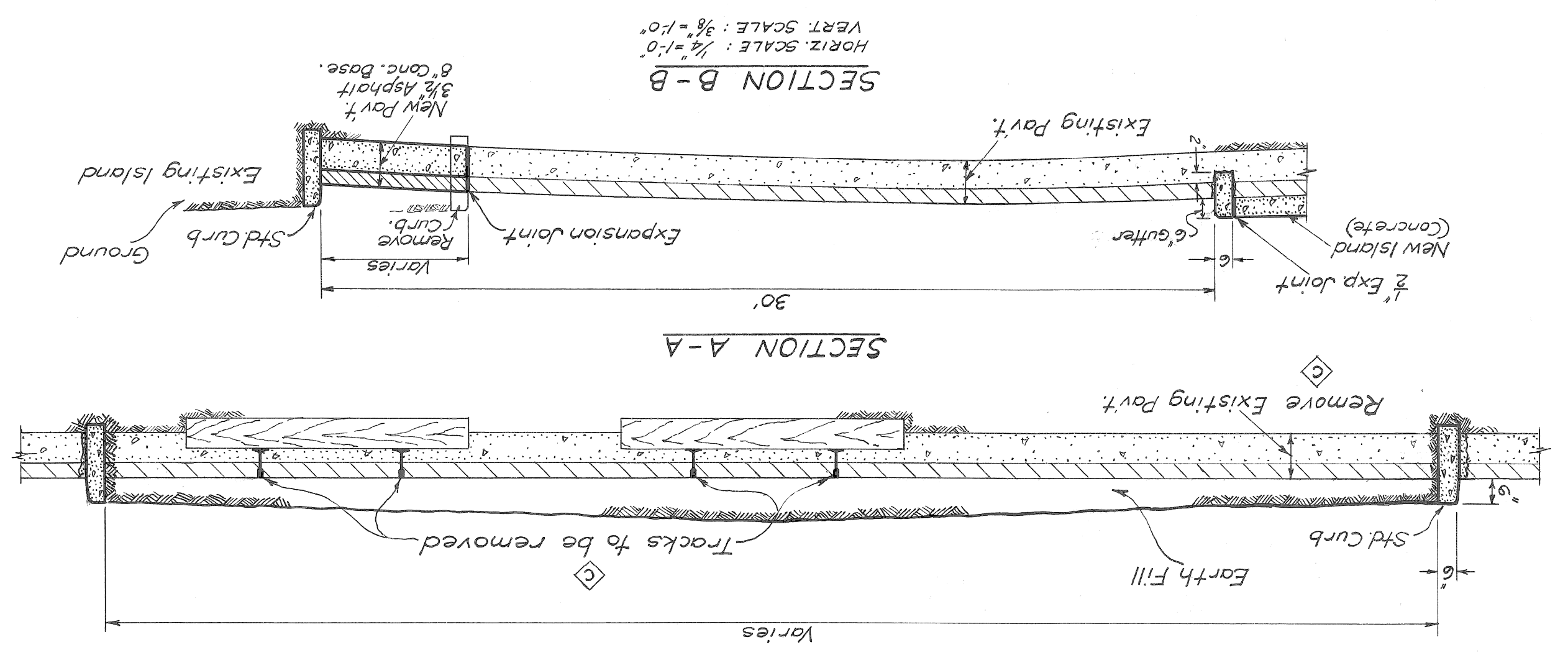
DRAW-15

OAKMAN

REVISIONS Section 4-A revised. Section 4-B revised. Section 4-C revised. Section 4-D revised. Section 4-E revised. Section 4-F revised. Section 4-G revised. Section 4-H revised. Section 4-I revised. Section 4-J revised. Section 4-K revised. Section 4-L revised. Section 4-M revised. Section 4-N revised. Section 4-O revised. Section 4-P revised. Section 4-Q revised. Section 4-R revised. Section 4-S revised. Section 4-T revised. Section 4-U revised. Section 4-V revised. Section 4-W revised. Section 4-X revised. Section 4-Y revised. Section 4-Z revised.	DESIGNED BY L.J. Kratz	CHECKED BY R.R. Reom	DATE 12-10-45
APPROVED J. J. [Signature]	TRACED BY L.J. Kratz	ENGINEER O.M. [Signature]	DATE 12-10-45
CITY OF DETROIT DEPARTMENT OF PUBLIC WORKS BUREAU OF DESIGN	PROJECT NO. 1248 & Sketch	PAGE NO. 17	SCALE 1" = 40'
WEST CHICAGO-OAKMAN BLVD. INTERSECTION PROPOSED CHANNELIZATION	D.W.G. NO. C-341-A	DATE Sept. 15, 1944.	DRAWN BY L.J. Kratz



- LEGEND**
- New Curb
 - Curb to be removed
 - Existing Manholes
 - Existing Catch Basins
 - New Catch Basins
 - Poles
 - Curb
 - Pavement
 - New Sewer Line
 - Gutter



NOTE:
 New Pavement to consist of 8" concrete base with 3 3/4" asphalt top. Base to have Transverse Dummy Groove Joints at 15' intervals.

Circle (A)	A = 17.55'	T = 90.08'	R = 571.5'
Circle (B)	A = 178.62'	T = 178.62'	R = 178.62'
Circle (C)	A = 17.55'	T = 90.08'	R = 571.5'
Circle (D)	A = 17.55'	T = 90.08'	R = 571.5'
Circle (E)	A = 17.55'	T = 90.08'	R = 571.5'
Circle (F)	A = 17.55'	T = 90.08'	R = 571.5'
Circle (G)	A = 17.55'	T = 90.08'	R = 571.5'
Circle (H)	A = 17.55'	T = 90.08'	R = 571.5'
Circle (I)	A = 17.55'	T = 90.08'	R = 571.5'
Circle (J)	A = 17.55'	T = 90.08'	R = 571.5'
Circle (K)	A = 17.55'	T = 90.08'	R = 571.5'
Circle (L)	A = 17.55'	T = 90.08'	R = 571.5'
Circle (M)	A = 17.55'	T = 90.08'	R = 571.5'
Circle (N)	A = 17.55'	T = 90.08'	R = 571.5'
Circle (O)	A = 17.55'	T = 90.08'	R = 571.5'
Circle (P)	A = 17.55'	T = 90.08'	R = 571.5'
Circle (Q)	A = 17.55'	T = 90.08'	R = 571.5'
Circle (R)	A = 17.55'	T = 90.08'	R = 571.5'
Circle (S)	A = 17.55'	T = 90.08'	R = 571.5'
Circle (T)	A = 17.55'	T = 90.08'	R = 571.5'
Circle (U)	A = 17.55'	T = 90.08'	R = 571.5'
Circle (V)	A = 17.55'	T = 90.08'	R = 571.5'
Circle (W)	A = 17.55'	T = 90.08'	R = 571.5'
Circle (X)	A = 17.55'	T = 90.08'	R = 571.5'
Circle (Y)	A = 17.55'	T = 90.08'	R = 571.5'
Circle (Z)	A = 17.55'	T = 90.08'	R = 571.5'