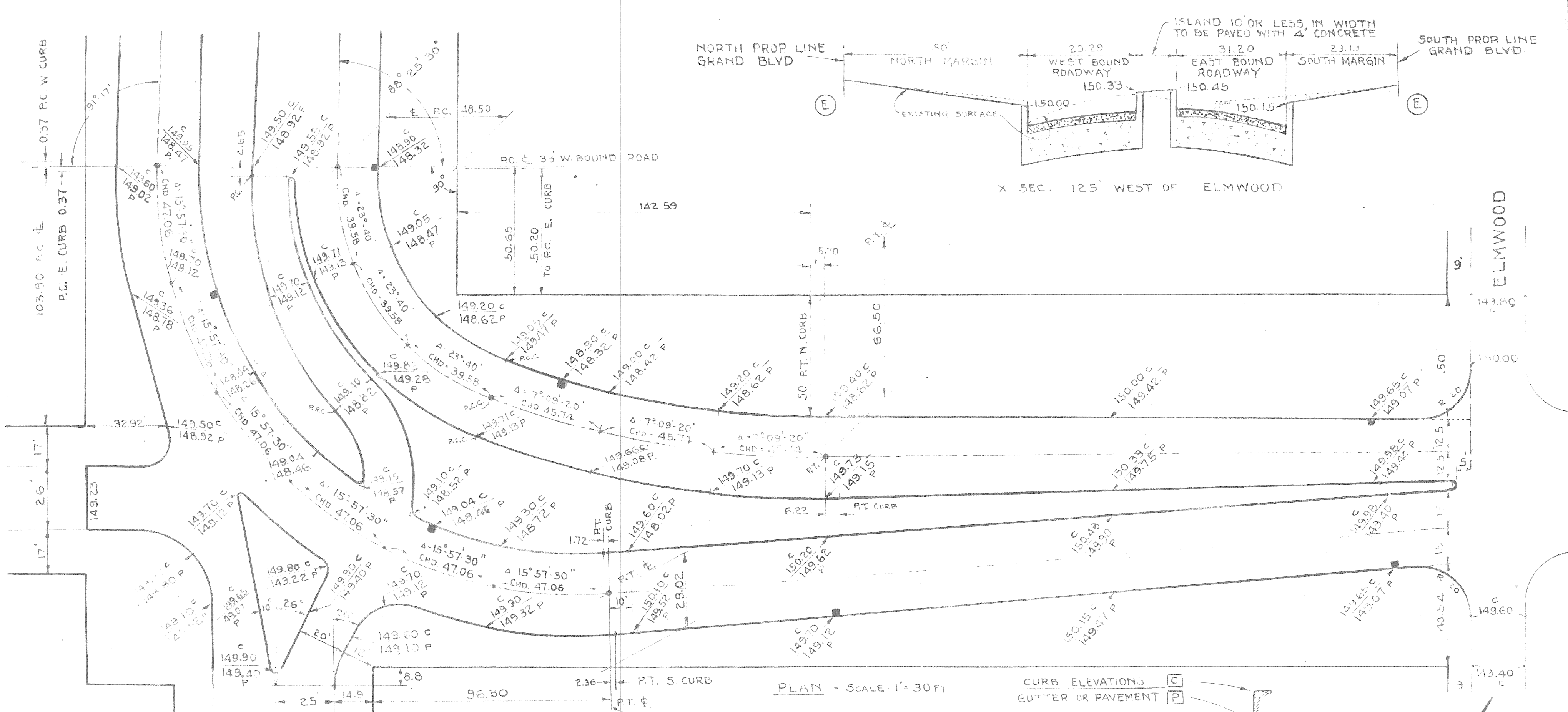


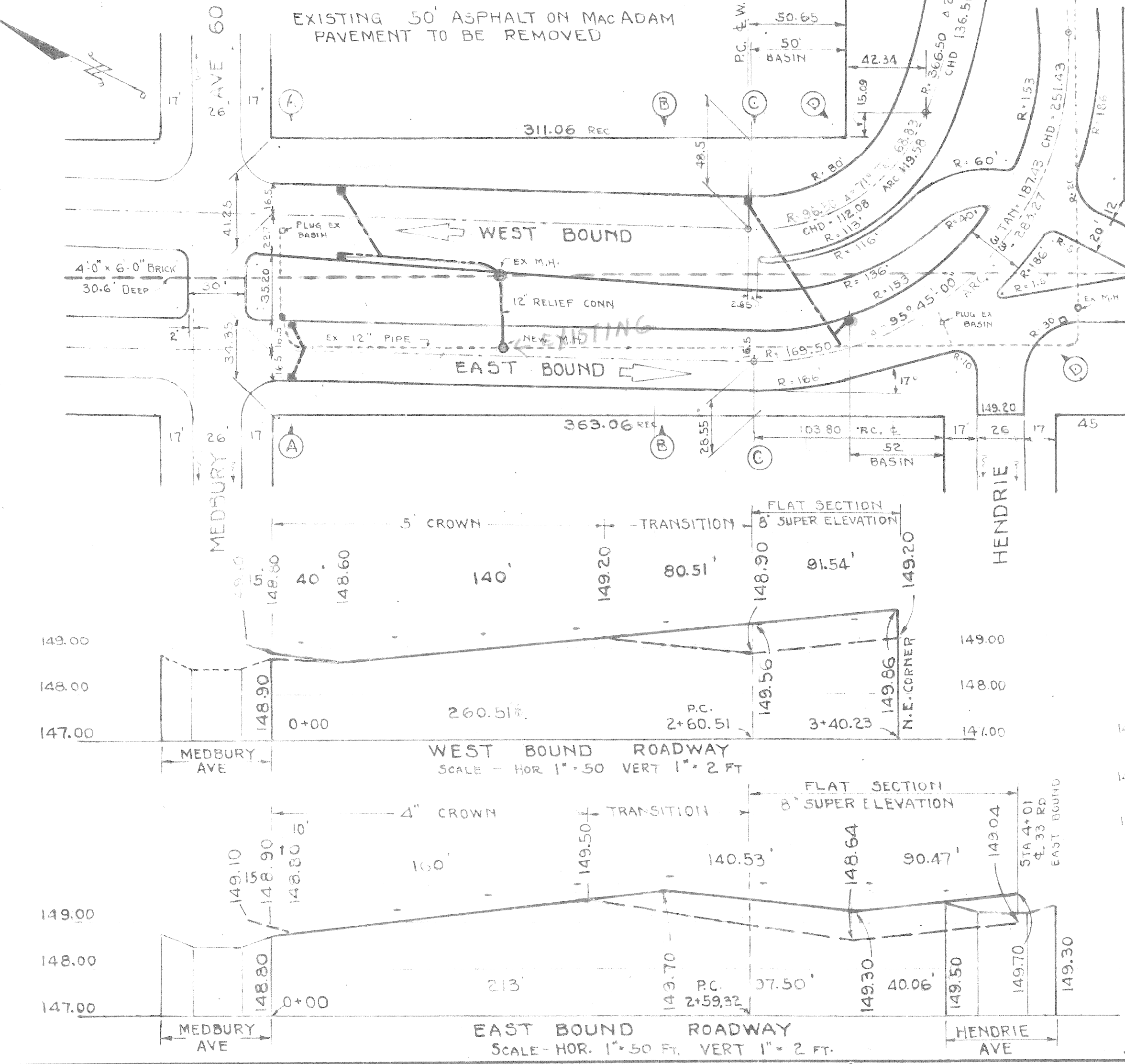
PROPOSED PAVEMENT TO BE 3 1/2" ASPHALTIC CONCRETE ON 8" UNIFORM CONCRETE BASE - WITH TYPE III INTEGRAL CURB

EXISTING 50' ASPHALT ON MACADAM PAVEMENT TO BE REMOVED



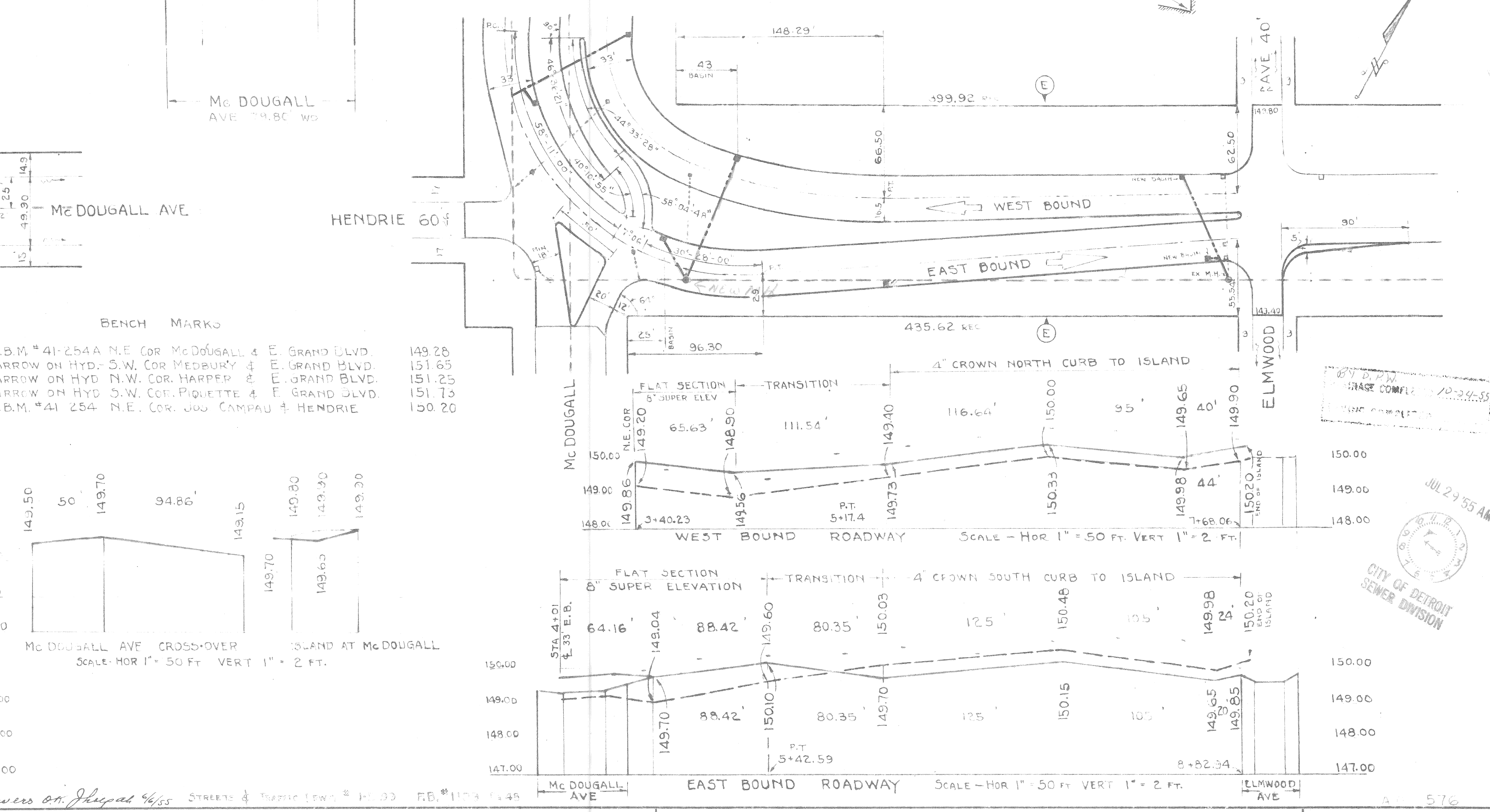
PLAN - SCALE 1" = 30 FT

CURB ELEVATION
GUTTER OR PAVEMENT



WEST BOUND ROADWAY
SCALE - HOR. 1" = 50 FT. VERT. 1" = 2 FT.

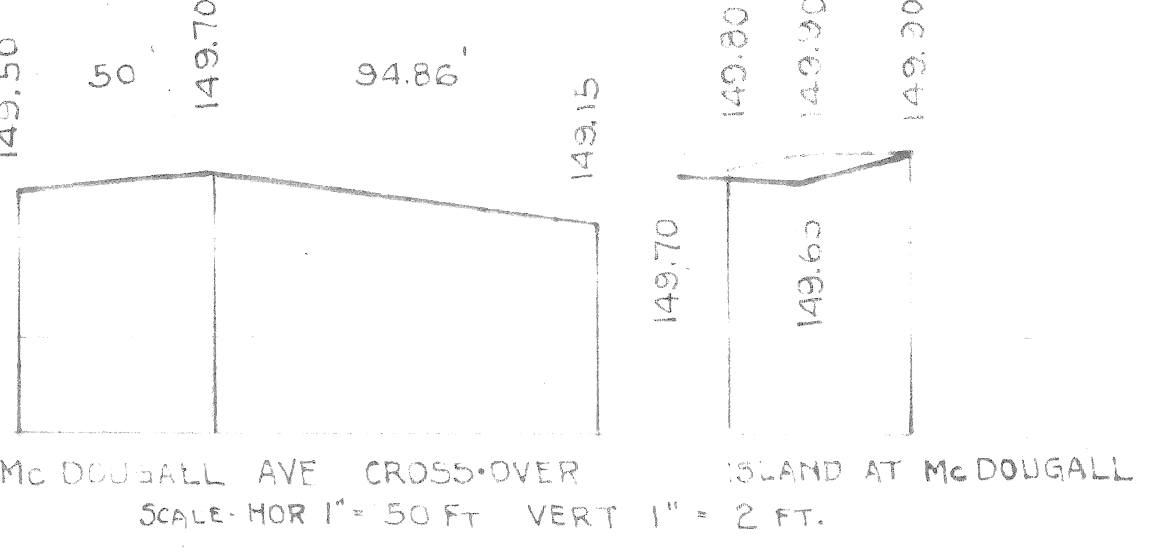
EAST BOUND ROADWAY
SCALE - HOR. 1" = 50 FT. VERT. 1" = 2 FT.



WEST BOUND ROADWAY
SCALE - HOR. 1" = 50 FT. VERT. 1" = 2 FT.

EAST BOUND ROADWAY
SCALE - HOR. 1" = 50 FT. VERT. 1" = 2 FT.

BENCH MARKS
P.B.M. #41-254A N.E. COR. McDUGALL & E. GRAND BLVD. 149.28
ARROW ON HYD. S.W. COR. MEDBURY & E. GRAND BLVD. 151.65
ARROW ON HYD. N.W. COR. HARPER & E. GRAND BLVD. 151.25
ARROW ON HYD. S.W. COR. PIQUETTE & E. GRAND BLVD. 151.75
P.B.M. #41-254 N.E. COR. JOSE CAMPAU & HENDRIE 150.20



McDUGALL AVE CROSS-OVER
SCALE - HOR. 1" = 50 FT. VERT. 1" = 2 FT.

ISLAND AT McDUGALL
SCALE - HOR. 1" = 50 FT. VERT. 1" = 2 FT.

Sewers on Right of Way Streets & Traffic Lanes H-33 FB #1174 1-4-55

DESIGNED BY	H. J. Smart	APPROVED	W. Wallace
DRAWN BY	H. J. Smart	CITY ENGINEER	
GRADE BY	H. J. Smart		
CHECKED BY	BEHN		

CITY OF DETROIT
DEPARTMENT OF PUBLIC WORKS
CITY ENGINEERS OFFICE

EAST GRAND BOUNDARY PLANNING
MEDBURY AND ELMWOOD AVE

SHEET	OF	SHEETS
CONTRACT NO.		
DRWG No.	C-3074	
DATE	JUNE 6 1955	

