

POSSIBLE GRADE BEAMS SHOWN ON SHEET S-203 OF HARLEY ELLINGTON & DAY DRAWG.

COORD	DESCRIPTION	DRN	CKD	APVD	DATE

REFERENCE DRAWINGS	DESIGNED BY	DRAWN BY	TRACED BY	CHECKED BY
		D. J. P.		

APPROVED:
Richard W. Edlen
 SR. ASSOC. CIVIL ENGR.
Heat
 ASST. CITY ENGR.
W. J. ...
 DIRECTOR

CITY OF DETROIT
CITY ENGINEERING DEPARTMENT
COLEMAN A. YOUNG - MAYOR

MILLENDER BRIDGES
JEFFERSON - RANDOLPH

SHEET 1 OF 3 SHEETS
CONTRACT NO. 83-22-18
ASSIGNMENT NO. C-244
DATE 12-12-83

CITY OF DETROIT HORIZONTAL CONTROL

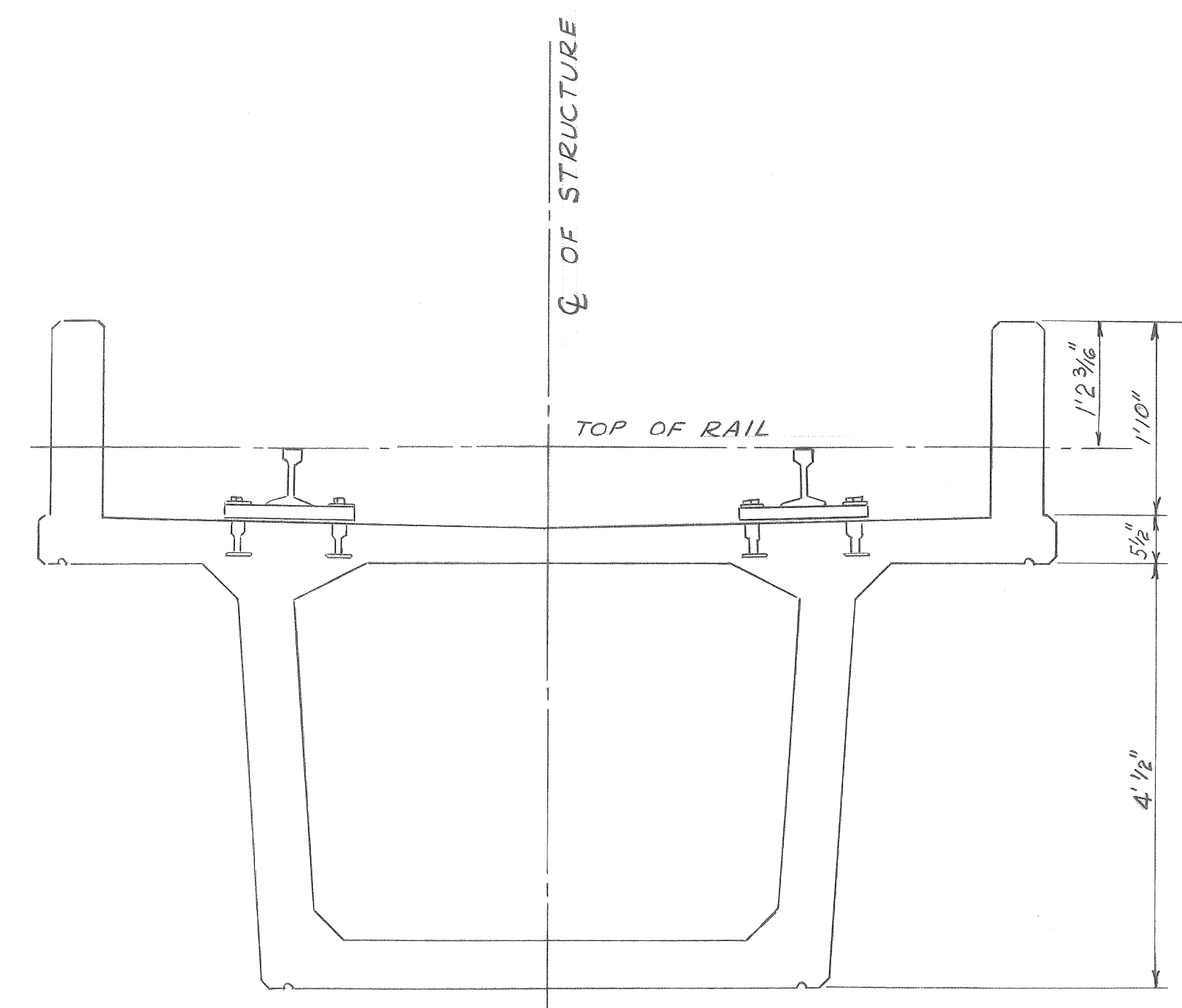
	NORTH	EAST	
720	99272.3742	101578.3627	NAIL SET IN FACADE ABOVE DOORWAY
431	99419.6712	101005.7807	CUT CROSS
630	99493.1517	101132.2384	DRILL HOLE IN BOX
91	99842.1291	101406.1972	P.K. IN BRASS WASHER
92	99637.7231	101053.9878	R.R. SPIKE
95	99412.4109	101184.9533	R.R. SPIKE
96	99607.9293	101521.4345	P.K. IN BRASS WASHER
A	99552.436	101234.265	
B	99552.283	101415.717	
C	99557.8285	101231.1322	
D	99422.4330	100998.3922	

COLUMN COORDINATES

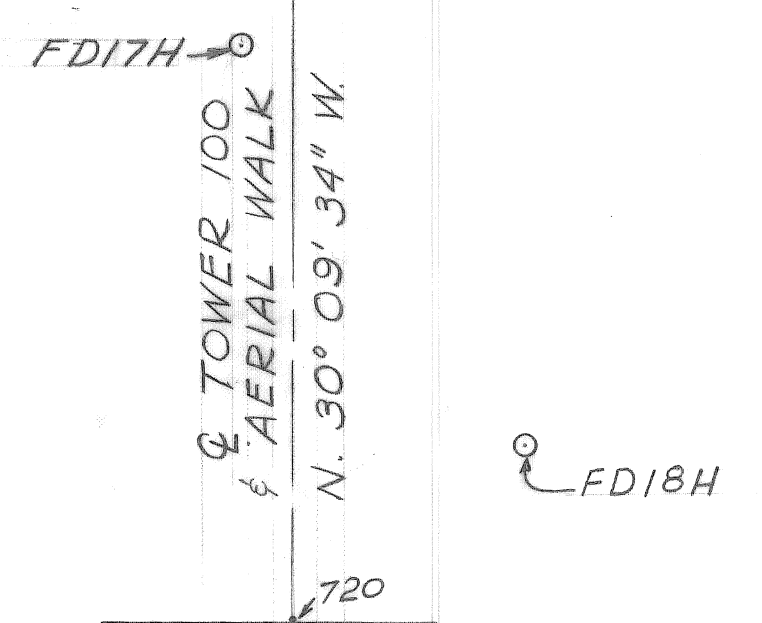
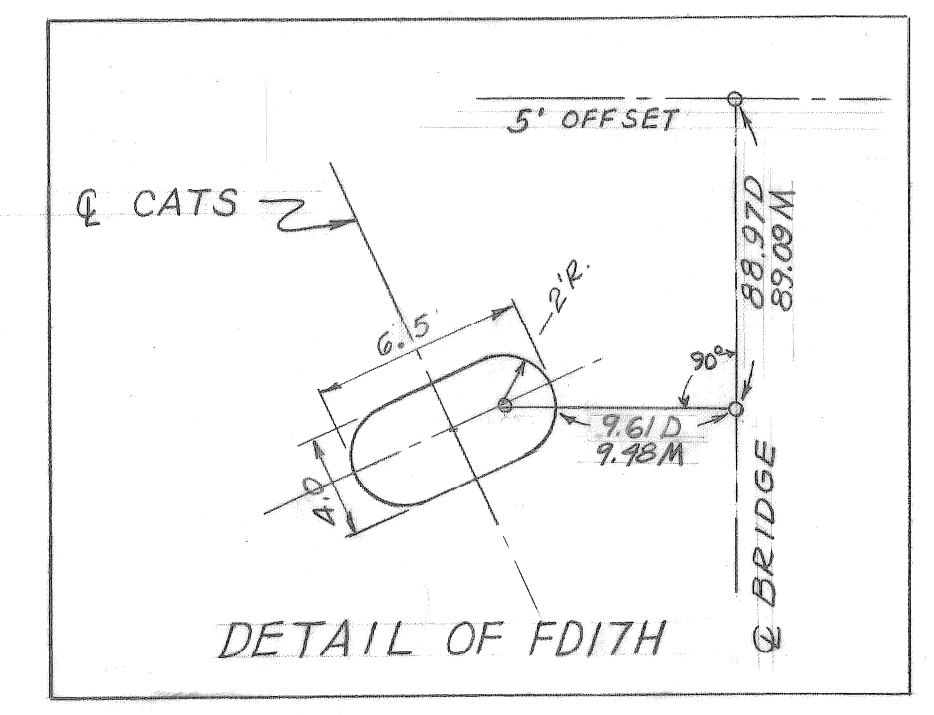
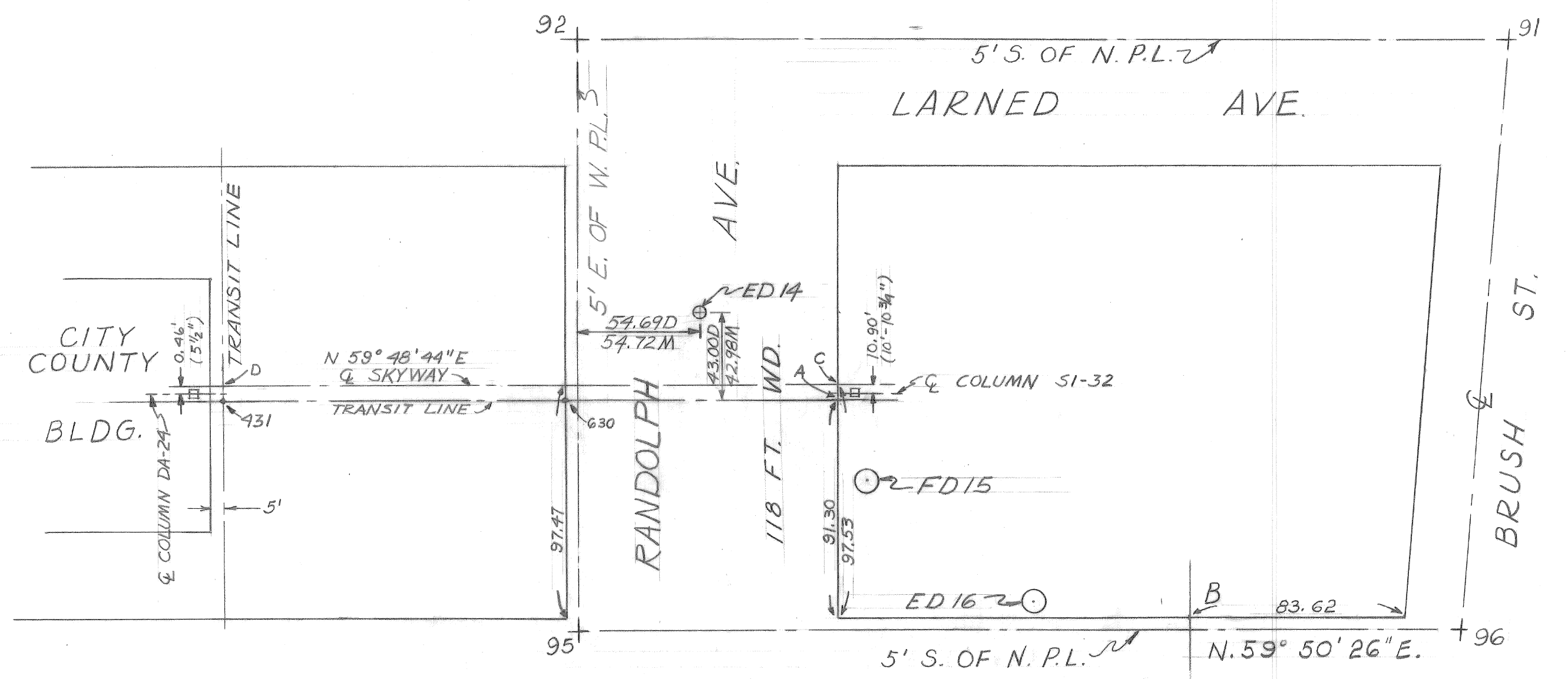
STATION	NORTH	EAST
ED14	138+30.72	99560.223
FD15	139+34.50	99533.773
ED16	140+38.00	99507.385
FD17H	141+38.00	99464.147
FD18H	142+63.00	99410.625

NOTE: REFER TO CONTRACT NUMBER 3A 121 p.186
TOP RAIL ELEVATION AT STATION 142+63.00 - ELEV. 161.37

TOP OF RAIL ELEVATION BETWEEN STATIONS
138+30.72 & 141+38.00, ELEV. 161.57
REFER TO p. 25, DETROIT CATS, PREPARED BY
GANNETT FLEMING OF MICHIGAN

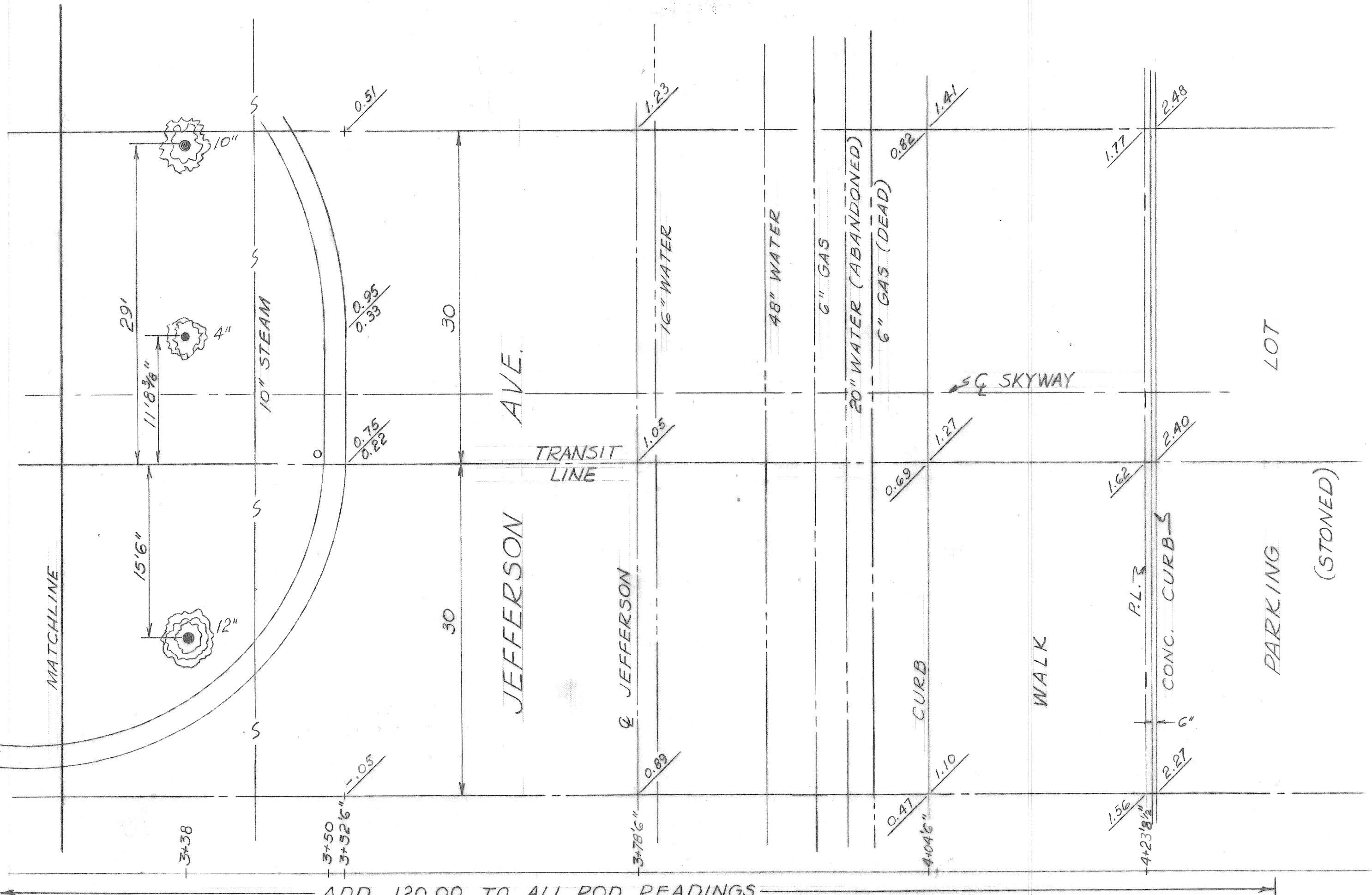


TYPICAL SECTION THRU GUIDEWAY BEAM
SCALE 3/4" = 1'0"



NOTE: NAIL SET IN FACADE ABOVE DOORWAY

TYPICAL: D - DESIGN
M - AS BUILT



VERTICAL CONTROL REN CEN TOWER 100

HYDRANT S.E. CORNER BRUSH & JEFFERSON	120.20
HYDRANT S.E. CORNER BRUSH & RENAISSANCE DR. N.	126.24
HYDRANT S.E. CORNER RENAISSANCE DR. N. & RENAISSANCE DR. W.	126.94
TILE AT CENTERLINE & STATION 1+00	124.24
FLOOR CHILL ROOM BLACK & BROWN PAINT MARK	121.96
POINT 1 MARK ON FLOOR	122.02
POINT 2 MARK ON FLOOR	122.01
S.E. CORNER CURB IN MIDDLE OF BUILDING	122.42
HYDRANT CENTERLINE RANDOLPH AT LARNED	123.19

THESE ELEVATIONS ON CITY DATUM

CITY OF DETROIT
CITY ENGINEERING DEPARTMENT
COLEMAN A. YOUNG - MAYOR

MILLENDER BRIDGES
JEFFERSON - RANDOLPH

COORD	DESCRIPTION	DRN	CKD	APVD	DATE
	SKYWAY DIMENSIONS	CM			11-84
	AS BUILT DIMENSIONS	CM			7-25-86
	DETAIL OF FD17H	DJP			1-12-88

SHEET 3 OF 3 SHEETS
CONTRACT NO. 83-22-18
ASSIGNMENT NO. C-244
DATE 12-15-83