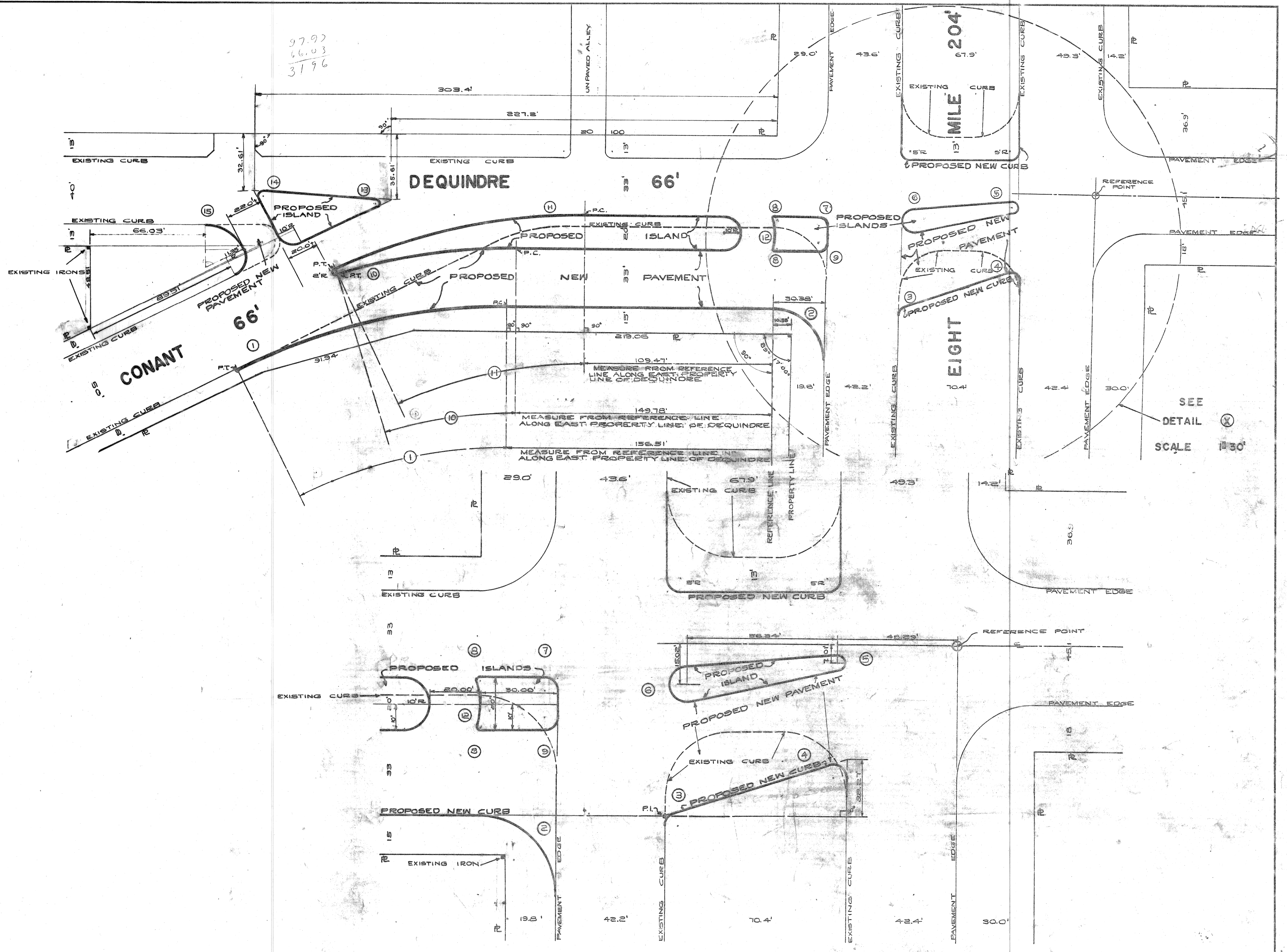


97.97
66.03
31.96

CURVE DATA

① A=26°12'30" R=344' T=80.08' S=48.160'	② A=90°45'00" R=5' T=30.38' S=198.90'	③ A=72°26'55" R=5' T=36.6' S=250'	④ A=107°33'04" R=5' T=3' S=182.39'	⑤ A=172°57'05" R=3' T=48.66' S=9.06'
⑥ A=152°17'05" R=6.5' T=105.50' S=5.15'	⑦ A=89°11'00" R=5' T=4.92' S=1.42'	⑧ A=108°52'30" R=5' T=135' S=6.60'	⑨ A=90°43'00" R=5' T=34.4' S=141.04'	⑩ A=17°33'50" R=25.3' T=5.06' S=105.45'
⑪ A=25°02'00" R=34.4' T=76.37' S=419.68'	⑫ A=33°45'10" R=30' T=49.2' S=7.80'	⑬ A=151°32'15" R=25.3' T=189' S=10.50'	⑭ A=118°21'49" R=25.3' T=50.4' S=5.82'	⑮ A=63°47'30" R=25.3' T=15.56' S=21.83'



SEE
DETAIL (X)
SCALE 1"=30'

DETAIL (X) SCALE 1"=20'

APPROVED BY MICHIGAN STATE HIGHWAY DEPARTMENT (SEE LETTER DATE AUGUST 20 1954)

DESIGNED BY <i>Kingfield Morris</i>	APPROVED <i>[Signature]</i>
DRAWN BY <i>Kingfield Morris</i>	ENGINEER <i>[Signature]</i>
TRACED BY	CITY ENGINEER <i>[Signature]</i>
CHECKED BY <i>BEHAR</i>	

CITY OF DETROIT
DEPARTMENT OF PUBLIC WORKS
CITY ENGINEER'S OFFICE
BUREAU OF
STREETS

TRAFFIC ENGINEER'S DRAWING ID 81.2 ASSIGNMENT NUMBER A.O. 347-B-13

PROPOSED CHANNELIZATION OF CONANT, DEQUINDRE & 8 MILE (LAYOUT DRAWING)

BOOK NO. LEVELS ON FILE	SCALE AS SHOWN	DWG. NO. C-2037
PAGE NO.	DATE 7-23-54	

CONANT (FOR FULL SET, SEE DEQUINDRE)

DRAW 6