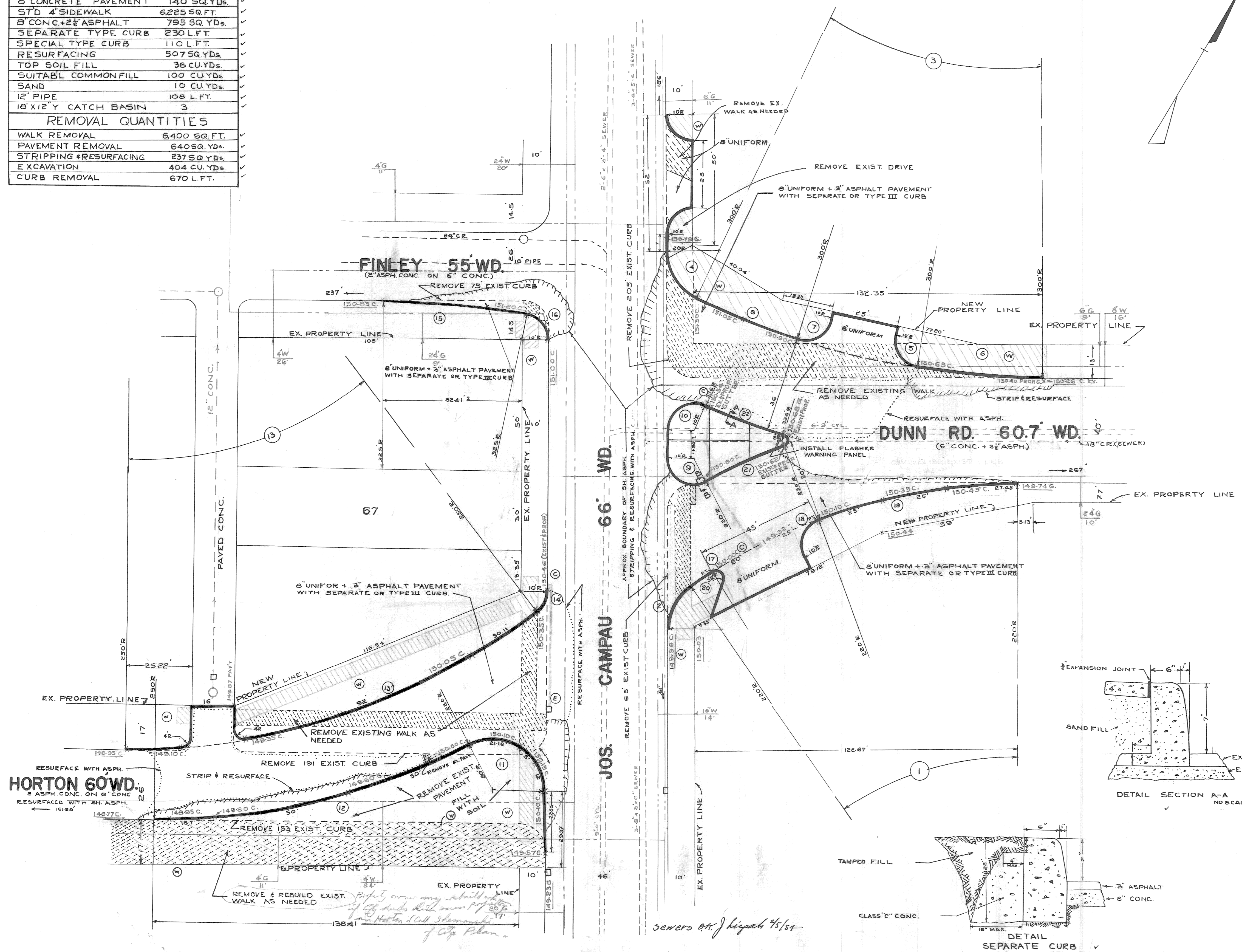


CONSTRUCTION QUANTITIES

6" CONCRETE PAVEMENT	140 SQ. YDS.
STD. 4" SIDEWALK	6225 SQ. FT.
8" CONC. + 2" ASPHALT	795 SQ. YDS.
SEPARATE TYPE CURB	230 L.F.T.
SPECIAL TYPE CURB	110 L.F.T.
RESURFACING	5075 SQ. YDS.
TOP SOIL FILL	38 CU. YDS.
SUITABLE COMMON FILL	100 CU. YDS.
SAND	10 CU. YDS.
12" PIPE	108 L.F.T.
18" X 12" Y CATCH BASIN	3

REMOVAL QUANTITIES

WALK REMOVAL	6400 SQ. FT.
PAVEMENT REMOVAL	6405 SQ. YDS.
STRIPPING & RESURFACING	2375 SQ. YDS.
EXCAVATION	404 CU. YDS.
CURB REMOVAL	670 L.F.T.

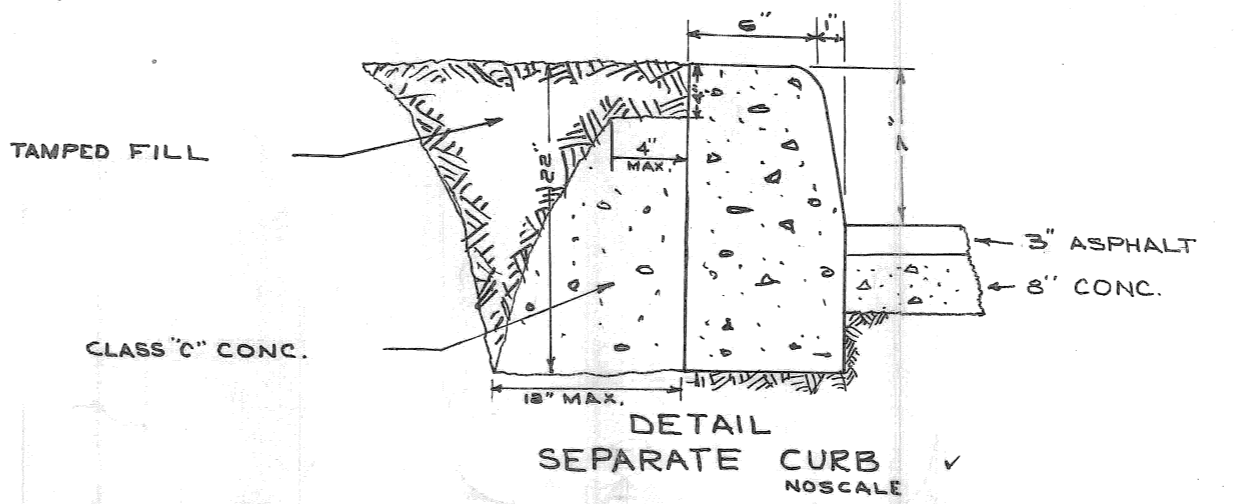
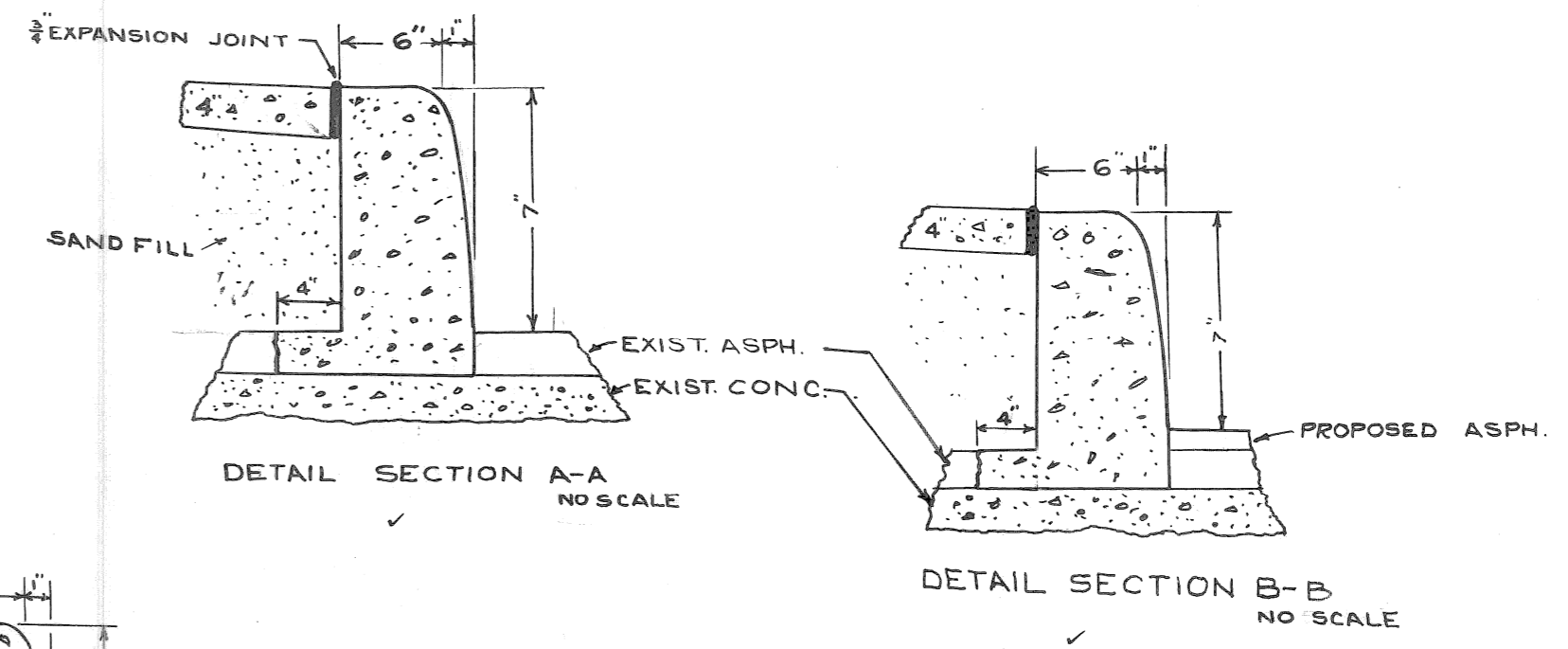


1	2	3	4
Δ: 34° 21' 26"	Δ: 58° 00' 14"	Δ: 25° 51' 00"	Δ: 63° 47' 40"
R: 220'	R: 300'	R: 300'	R: 220'
T: 68.01'	T: 10.64'	T: 68.65'	T: 12.45'
A: 131.92'	A: 198.55'	A: 135.35'	A: 22.27'
S: 451.00"	S: 17.60"	S: 351.00"	S: 22.27"
5	6	7	8
Δ: 92° 07' 35"	Δ: 3° 08' 50"	Δ: 96° 44' 46"	Δ: 7° 48' 51"
R: 10'	R: 300'	R: 10'	R: 300'
T: 10.98'	T: 24.00'	T: 11.25'	T: 20.34'
A: 16.08'	A: 47.85'	A: 16.65'	A: 41.00'
S: 23.40"	S: 16.50"	S: 28.00"	S: 18.00"
9	10	11	12
Δ: 118° 18' 06"	Δ: 112° 30' 16"	Δ: 117° 34' 25"	Δ: 26° 21' 15"
R: 10'	R: 10'	R: 20'	R: 250'
T: 16.71'	T: 14.87'	T: 33.23'	T: 63.15'
A: 20.63'	A: 18.43'	A: 41.16'	A: 123.70'
S: 63.90"	S: 31.50"	S: 25.42"	S: 320.42"
13	14	15	16
Δ: 38° 17' 35"	Δ: 52° 08' 55"	Δ: 3° 34' 37"	Δ: 60° 31' 25"
R: 10'	R: 10'	R: 325'	R: 10'
T: 68.97'	T: 4.88'	T: 27.25'	T: 9.52'
A: 167.11'	A: 9.10'	A: 53.34'	A: 14.11'
S: 602.60"	S: 3.40"	S: 18.50"	S: 14.60"
17	18	19	20
Δ: 154° 54' 29"	Δ: 98° 32' 02"	Δ: 20° 10' 08"	Δ: 02° 26' 54"
R: 3'	R: 220'	R: 220'	R: 220'
T: 13.48'	T: 11.61'	T: 39.13'	T: 4.70'
A: 8.11'	A: 17.20'	A: 77.44'	A: 9.40'
S: 28.28"	S: 30.10"	S: 90.20"	S: -
21	22		
Δ: 7° 07' 35"	Δ: 5° 33' 01"		
R: 250'	R: 336'		
T: 15.57'	T: 16.29'		
A: 31.11'	A: 32.55'		
S: 9.90"	S: 3.32"		

BENCH MARKS **ELEV.**

B.M. # 41-255A S.E. COR. GRIFFIN & E. GRAND BLVD.	149.481
ARR. ON HYD. S.W. COR. HORTON & JOS. CAMPAU	152.43
B.M. # 41-255 N.E. COR. JOS. CAMPAU & E. GRAND BLVD.	149.642

- LEGEND**
- EXISTING GAS LINES
 - EXISTING WATER LINES
 - EXISTING LATERAL SEWERS
 - EXISTING SEWER CYLINDERS
 - CURB TO BE REMOVED
 - PROPOSED CURB
 - APPROX. BOUNDARY OF AREA TO BE RESURFACED
- (W) CONSTRUCT STANDARD 4" SIDEWALK
 - (C) CONSTRUCT 18" X 12" Y CATCH BASIN
 - (E) ABANDON CATCH BASIN



NOTE FOR SURVEY DIVISION
SEE CITY ENGINEER'S DRAWING C-1831
FOR PROPERTY CONDEMNATION

DESIGNED BY	M. Kewas
DR. W.N. BY	M. Kewas
TR. CED BY	
CHECKED BY	BENM
APPROVED	<i>[Signature]</i>
ENGINEER OF PLANS	<i>[Signature]</i>
ASS'T. CITY ENGINEER	<i>[Signature]</i>

CITY OF DETROIT
DEPARTMENT OF PUBLIC WORKS
CITY ENGINEER'S OFFICE
BUREAU OF DESIGN

TRAFFIC ENG. DRAWING NO. 1 C 43-5

PROPOSED ONE-WAY IMPROVEMENTS	
DUNN RD. - HORTON & JOS. CAMPAU	
BOOK NO. 1680 LEVELS NOTES ON FILE	SCALE 1" = 20'
PAGE NO. 67-73	DATE 1-7-54
DWG. C-1967	NO. JOB NO 347-A-15