

NO.	REVISIONS	DATE

designed by N.H.  
 drawn by N.H./J.Y.  
 checked by M.C.  
 approved by [Signature]  
 STRUCTURAL ENGINEER  
 HEAD ENGINEER

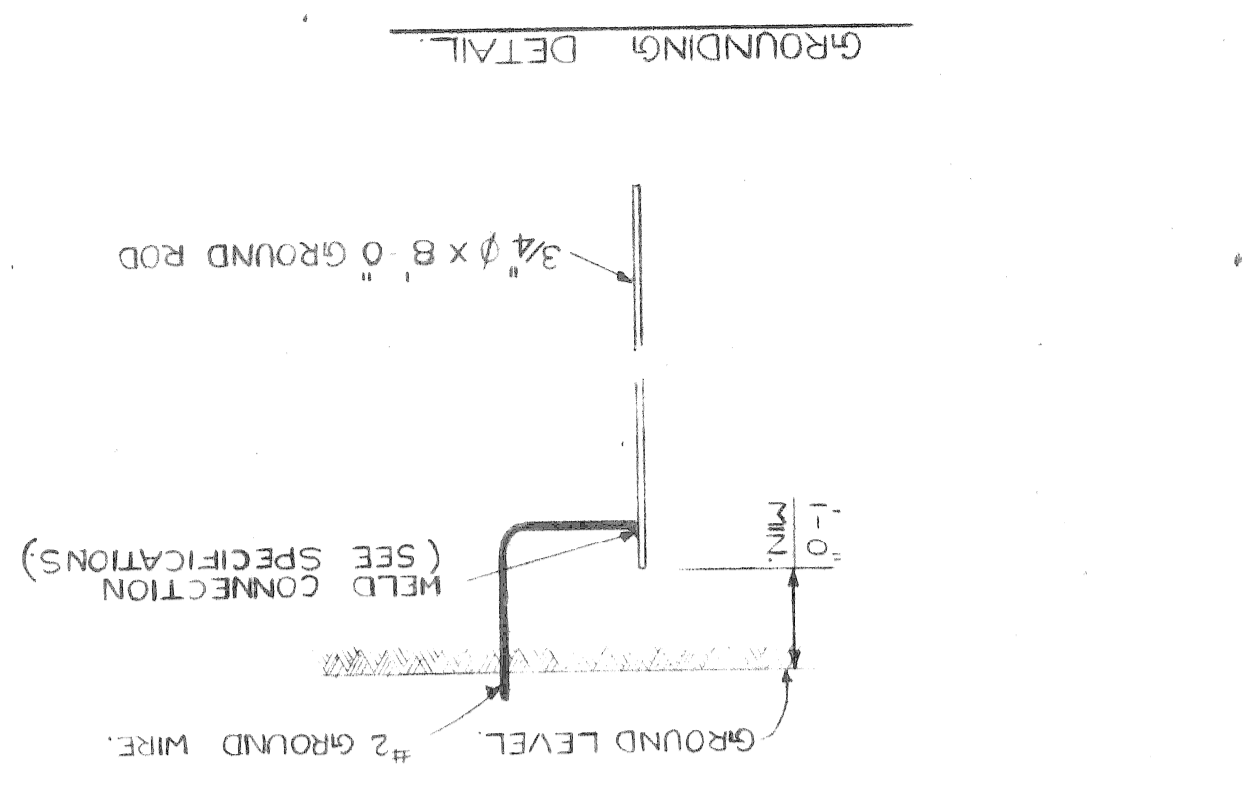
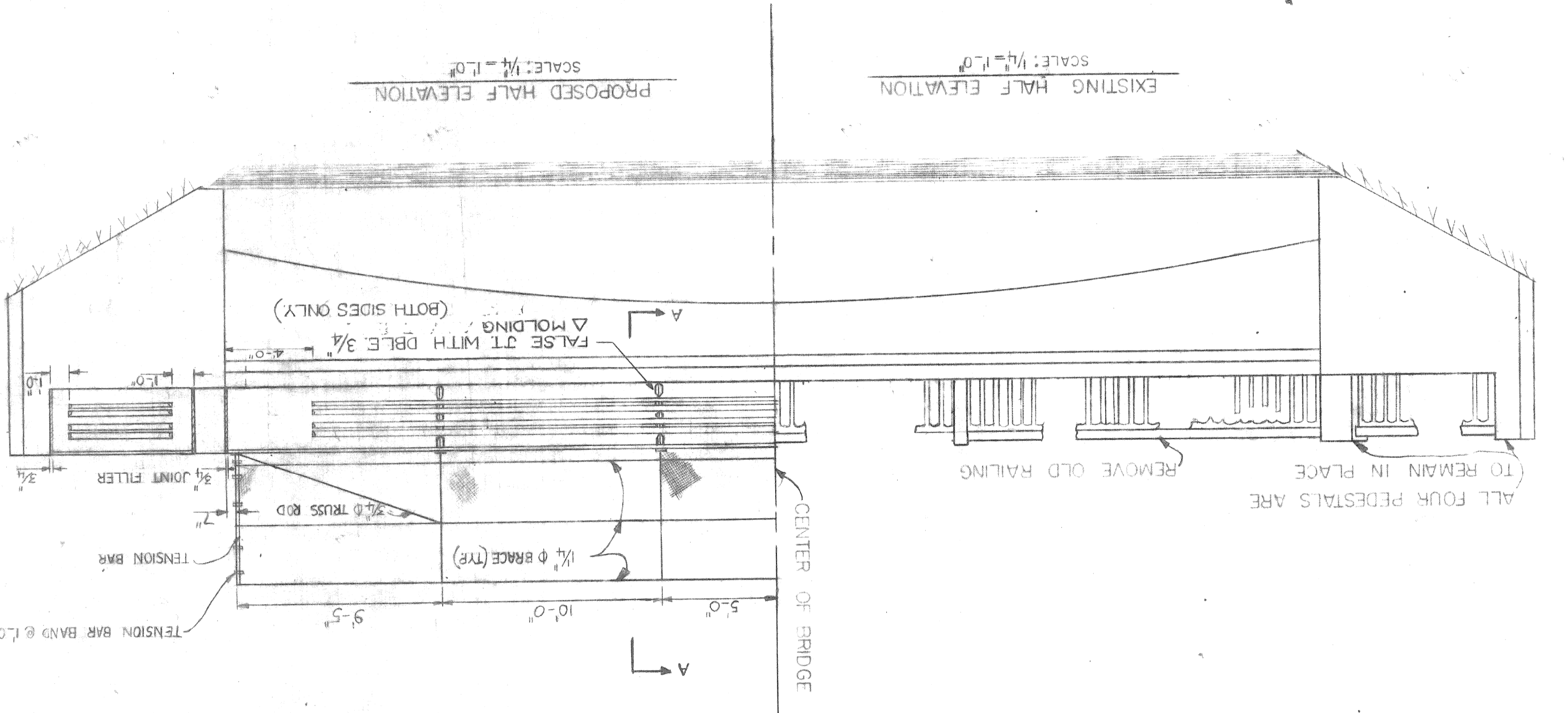
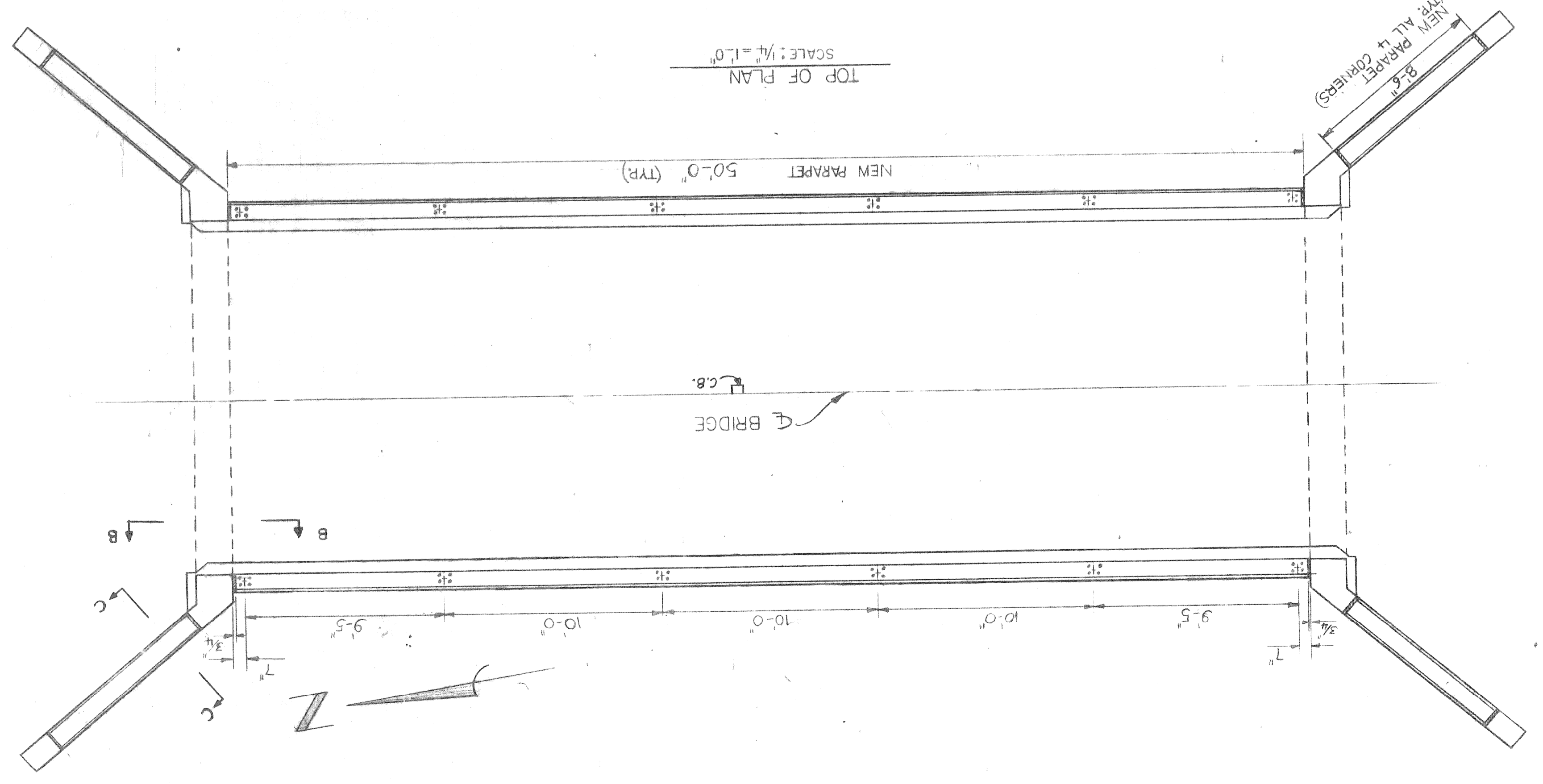
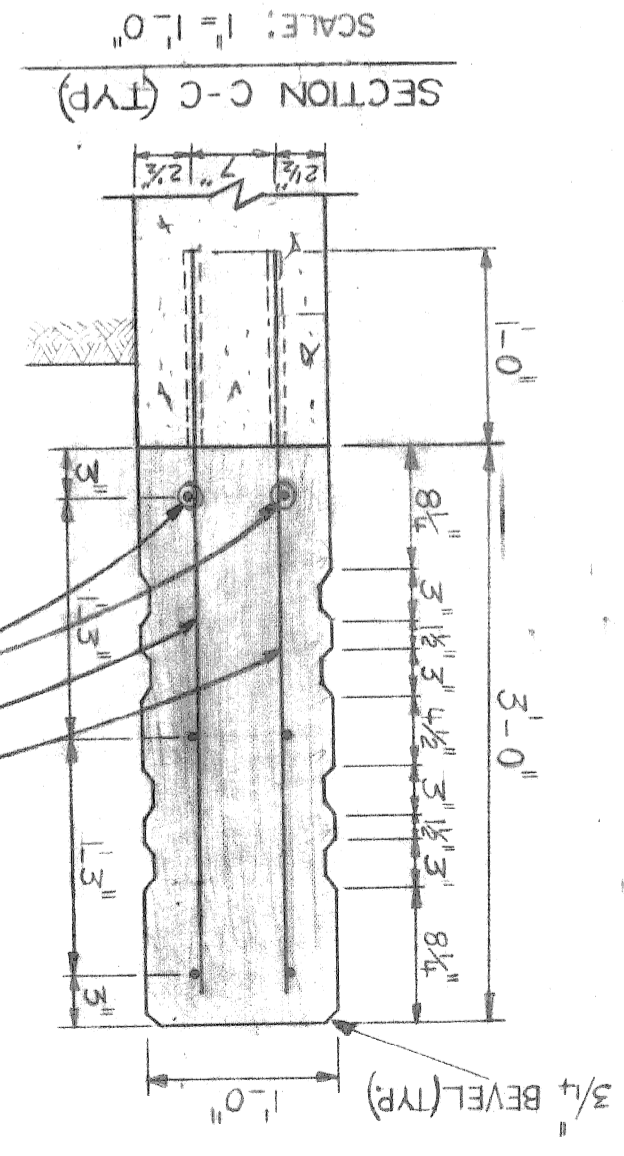
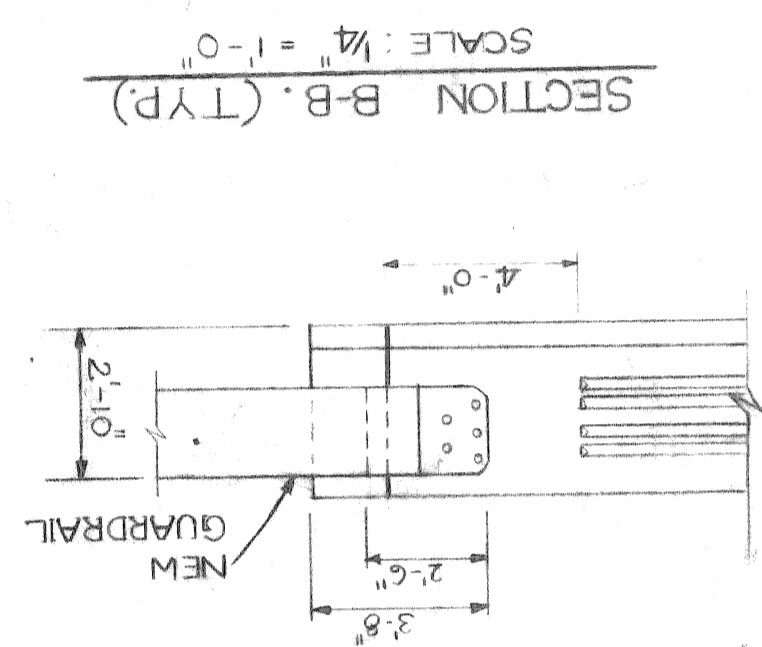
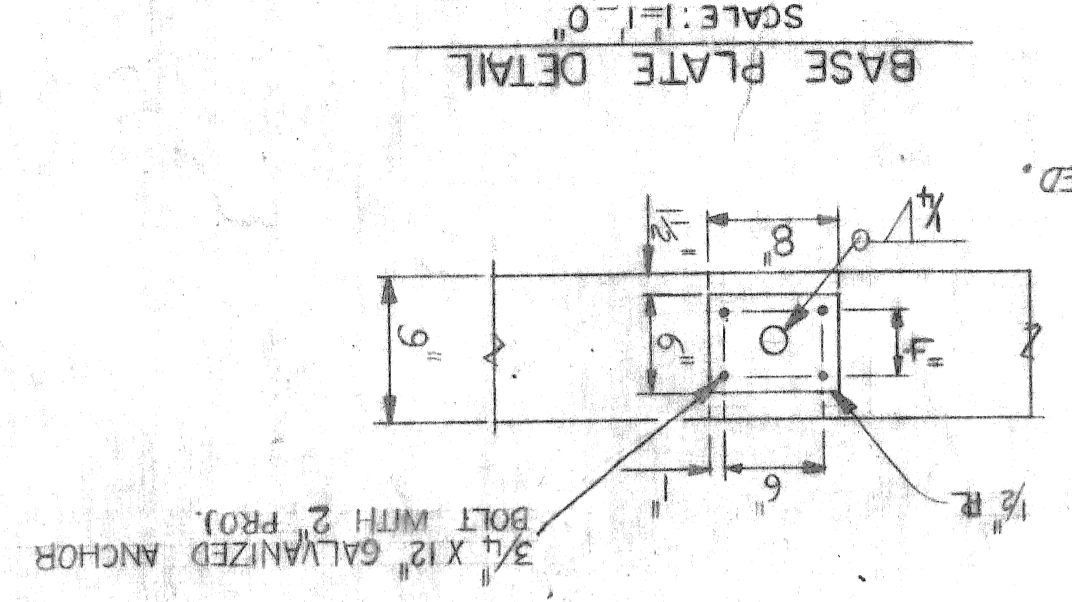
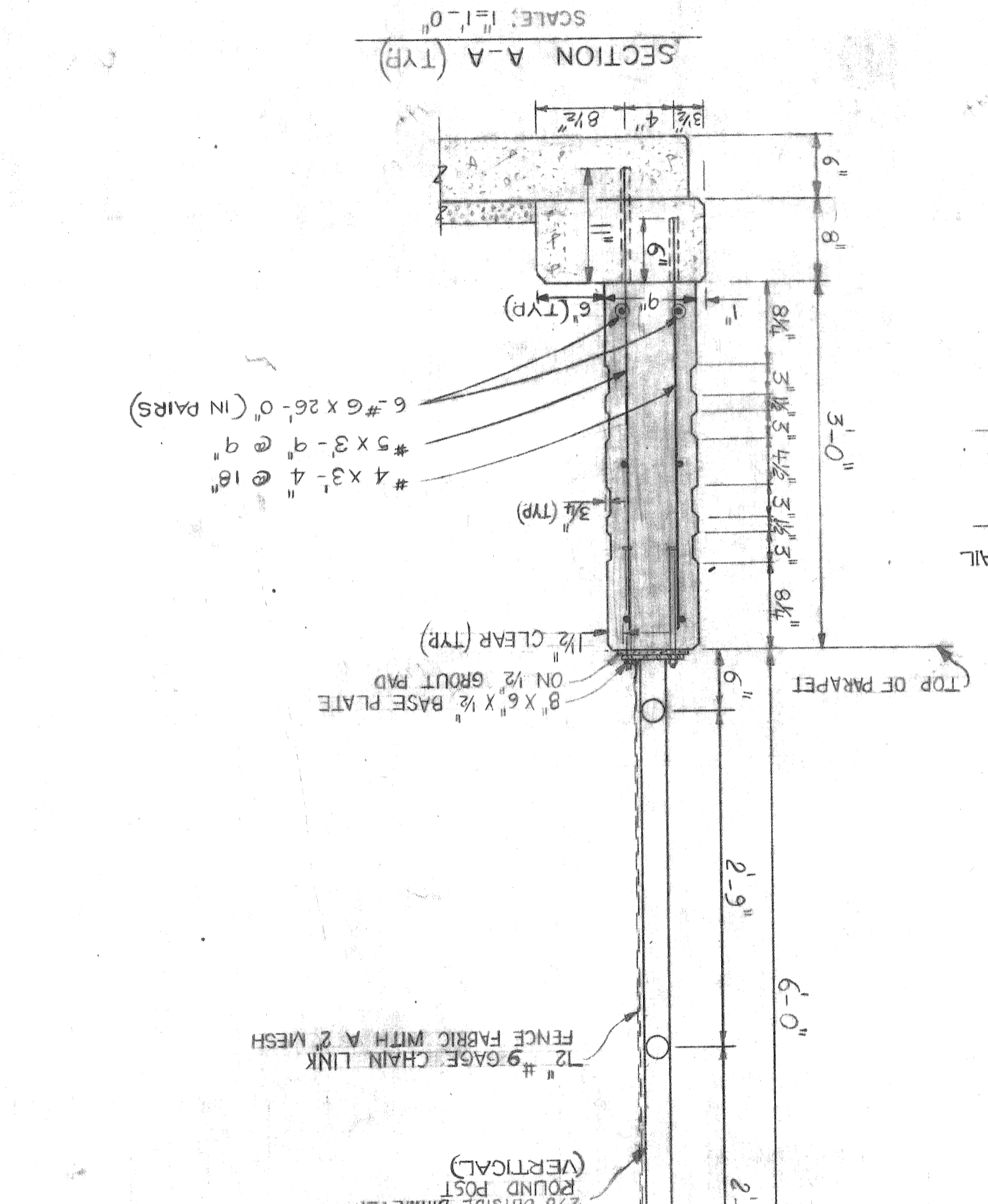
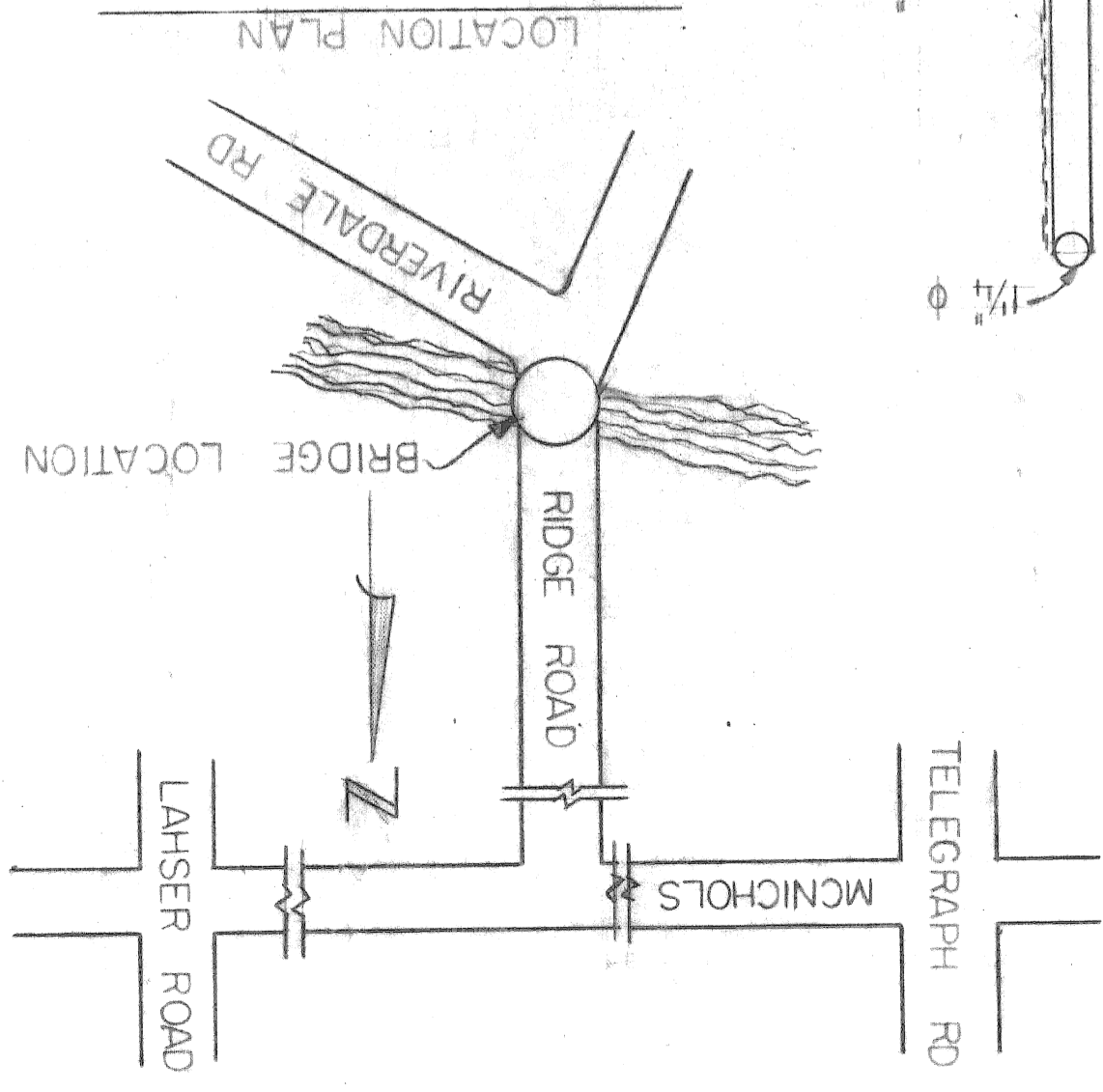
**CITY OF DETROIT**

city engineering department  
 for DEPARTMENT OF PUBLIC WORKS

RIDGE ROAD BRIDGE OVER ROUGE RIVER  
 BW-283

CONCRETE RAILING REPLACEMENT

a.o. contract no. [blank]  
 sheet 1 of 2  
 drawing no. [blank]  
 date 9-15-1986



**PARAPET AND FENCING NOTES**

ALL WORK SHALL CONFORM TO MICHIGAN DEPARTMENT OF TRANSPORTATION STANDARD SPECIFICATIONS FOR HIGHWAY CONSTRUCTION, 1984 EDITION.

ALL FENCE FABRIC SHALL BE GALVANIZED, #9 GAGE WITH A 2" MESH, AND FURNISHED WITH KNUCKLING AT BOTH SELVAGES.

THE POSTS SHALL BE ROUND POSTS HAVING AN OUTSIDE DIAMETER OF 2 3/8" AND WEIGHT 3.65 P.L.F., GALVANIZED.

THE NOMINAL 1 1/4" Ø PIPE SHALL BE 1 3/8" Ø OUTSIDE DIAMETER STEEL PIPE OR TUBING WEIGHING 2.27 P.L.F., GALVANIZED.

ALL POSTS AND TUBING SHALL BE FURNISHED WITH MANUFACTURERS STANDARD CONNECTIONS, AND ITS MINIMUM WEIGHT SHALL BE WITHIN 5% OF THAT SPECIFIED.

ALL COMPONENTS ARE TO BE GALVANIZED. BOLTS, NUTS AND WASHERS ARE TO BE GALVANIZED IN ACCORDANCE WITH ASTM DESIGNATION A153.

TENSION BAR SHALL BE 3/4" x 1/4" GALVANIZED STEEL.

CONTRACTOR SHALL VERIFY FIELD CONDITIONS BEFORE FABRICATION.

DRILLED HOLES MUST BE TWICE THE BAR DIAMETER AND THEN THE BARS SHALL BE SET IN EPOXY GROUT.

NEW PARAPET CONCRETE SHALL BE GRADE 45D. ALL STEEL REINFORCEMENT MUST BE EPOXY COATED BAR, GRADE 60.

ALL EXPOSED NUTS SHALL BE PROTECTED FROM VANDALISM BY PEENING, SCORING, UPSETTING THE BOLT THREADS, OR OTHER ACCEPTABLE MEANS.

PROVIDE AN ELECTRICAL GROUNDING SYSTEM FOR EACH FENCE AS INDICATED IN THE DETAILED SPECIFICATIONS.

BW-283



