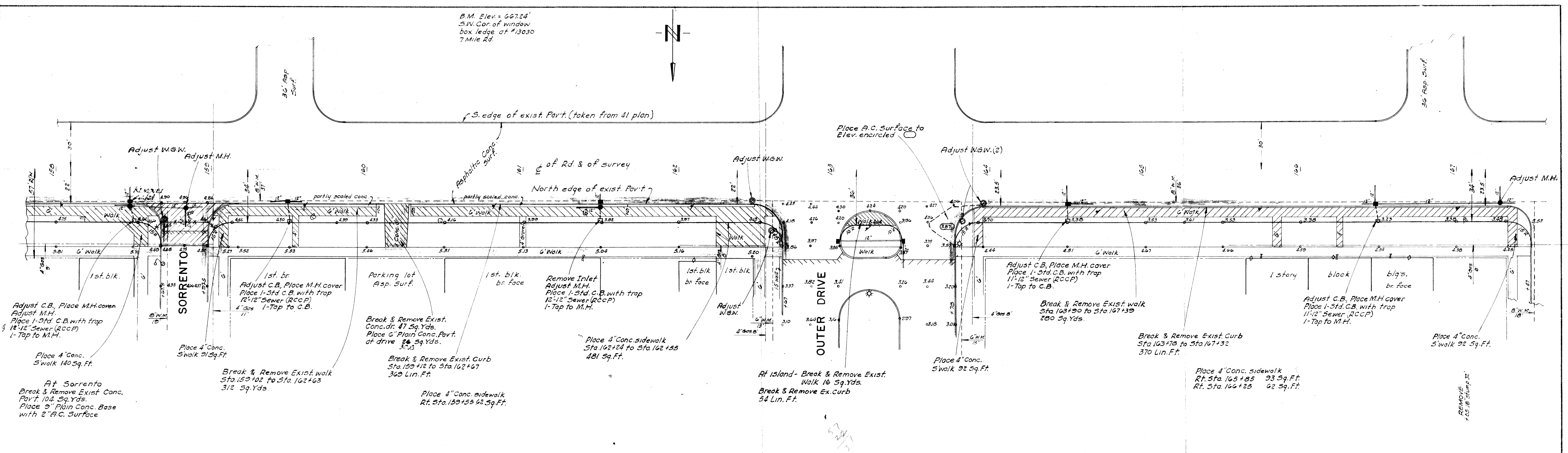
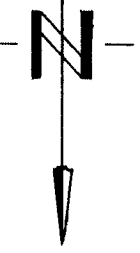


B.M. Elev. = 667.24
 S.W. Cor of window
 box ledge at 13030
 7 Mile Rd



REVISIONS					
NO.	ITEM	BY	DATE	NO.	ITEM

BOARD OF WAYNE COUNTY ROAD COMMISSIONERS
 DETROIT 26, MICHIGAN

CHAIRMAN _____ VICE-CHAIRMAN _____
 COMMISSIONER _____

SCALE 1" = 30'

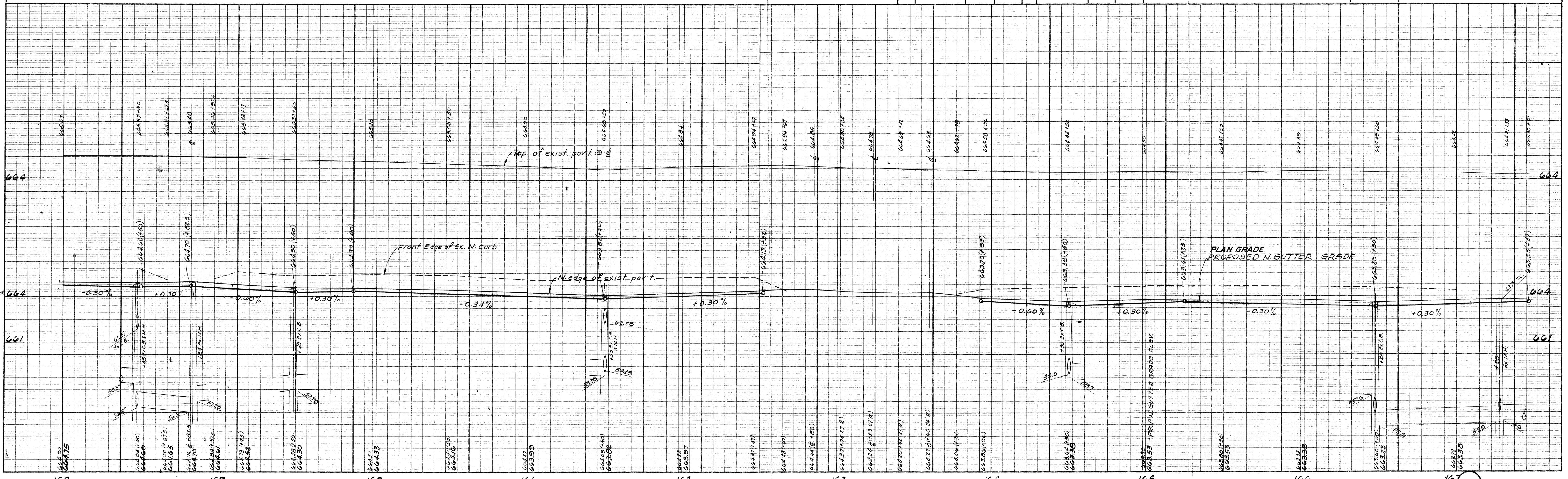
DATE Jan. 1935

TRANSIT BOOK T-30-12

LEVEL BOOK L-30-14

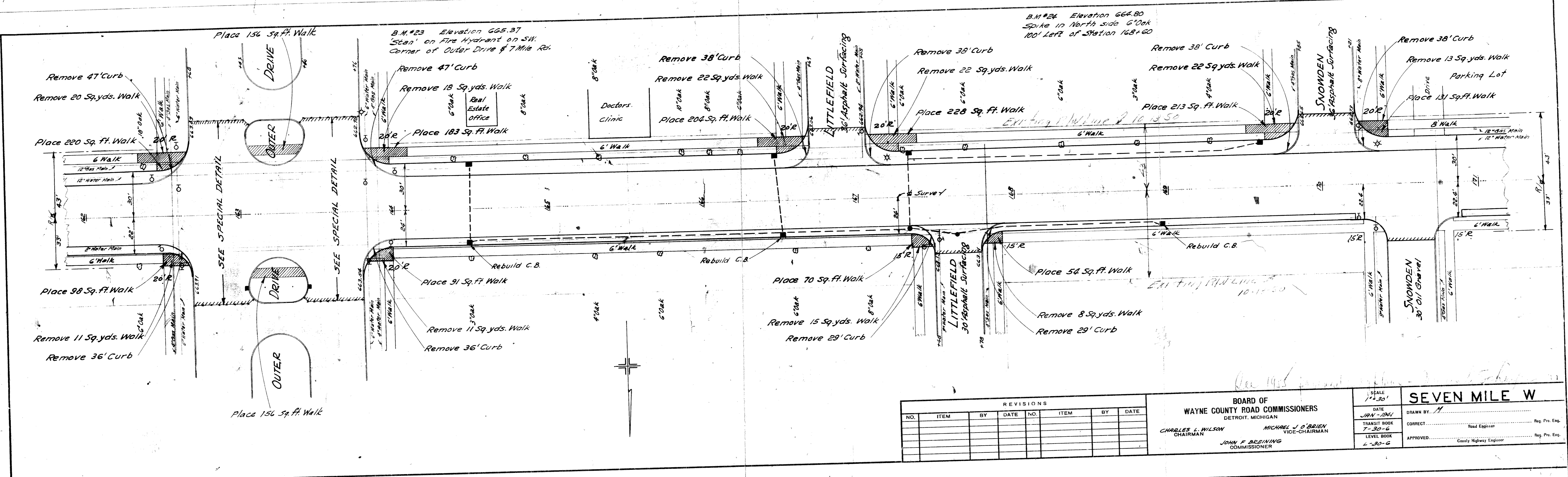
SEVEN MILE W.

DRAWN BY C. J. ... CHECKED BY ...
 CORRECT ...
 APPROVED ...
 COUNTY HIGHWAY ENGINEER



PLAN	SURVEYED	DATE
NOTE BOOK	ALIGNED CHECKED	
	BY	
	NO.	

PROFILE	SURVEYED	DATE
NOTE BOOK	GRADES CHECKED	
	B. M. S. NOTED	
	STRUCTURE NOTATIONS CHECKED	



REVISIONS					
NO.	ITEM	BY	DATE	NO.	ITEM

BOARD OF WAYNE COUNTY ROAD COMMISSIONERS
DETROIT, MICHIGAN

CHARLES L. WILSON, CHAIRMAN
MICHAEL J. O'BRIEN, VICE-CHAIRMAN
JOHN F. BRESNIN, COMMISSIONER

SCALE 1" = 30'
DATE JAN-1951
TRANSIT BOOK T-30-6
LEVEL BOOK L-30-6

SEVEN MILE W
DRAWN BY: [Signature]
CORRECT: [Signature]
APPROVED: [Signature]

