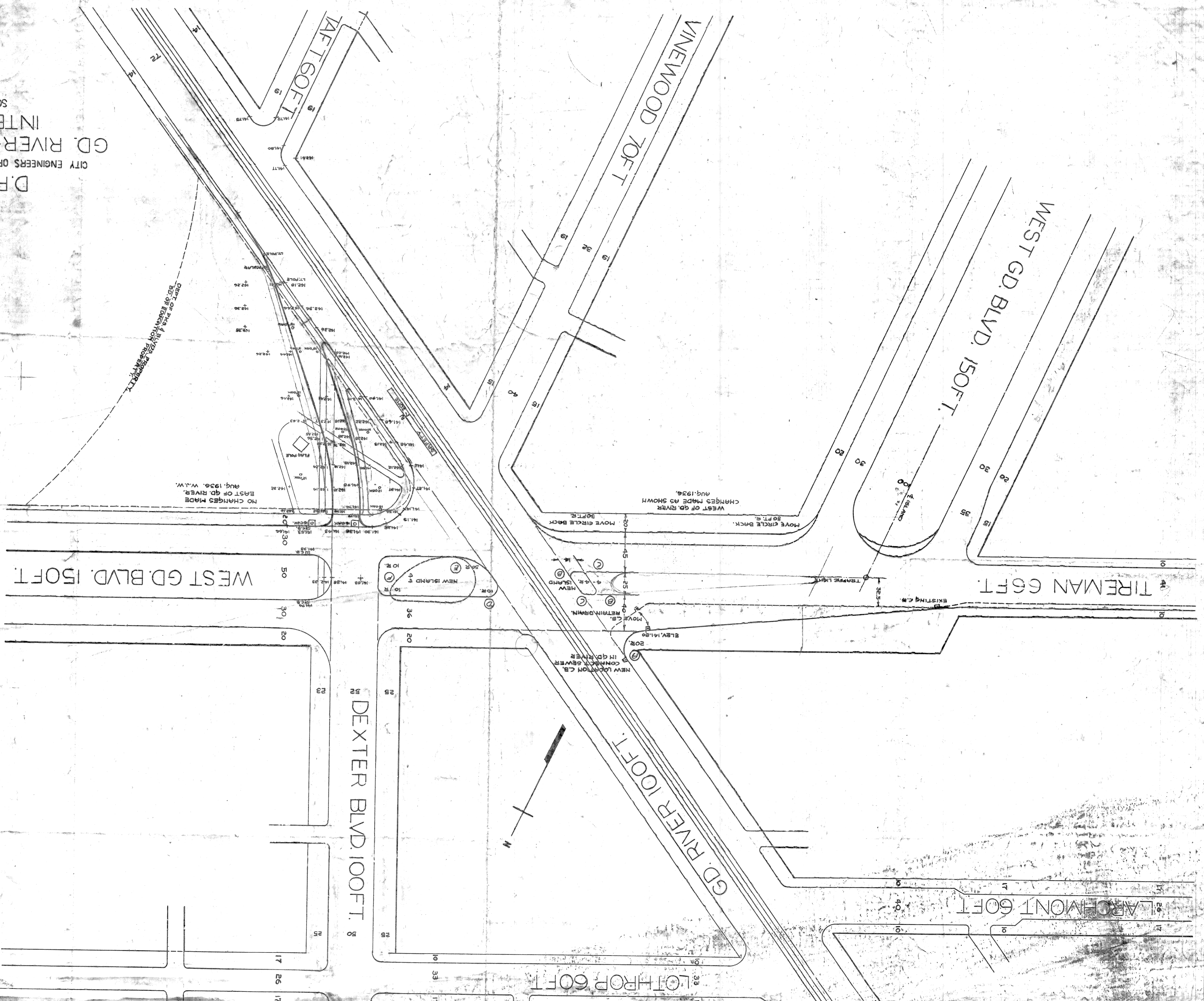


DEXTER (SEE GRAND RIVER FOR ORIGINAL)

D.P.W. DETROIT.
CITY ENGINEERS OFFICE—DIVISION OF PAVING.
GD. RIVER—WEST GD. BLVD.
INTERSECTION.
SCALE 50'-INCH.
DRAWN BY HARRIS.



DEPT. OF PAV. & BRIDGE, DETROIT
30' OF BRIDGE ON PROPERTY

NO CHANGES MADE
EAST OF GD. RIVER.
Aug. 1936. W.L.W.

WEST OF GD. RIVER
CHANGES MADE AS SHOWN
Aug. 1936.



LARCHMONT 60 FT.

LOTHROP 60 FT.

DEXTER BLVD. 100 FT.

WEST GD. BLVD. 150 FT.

TIREMAN 66 FT.

GD. RIVER 100 FT.

VINEWOOD 70 FT.

WEST GD. BLVD. 150 FT.

LAFT 60 FT.