

BOARD OF
WAYNE COUNTY ROAD COMMISSIONERS
 DETROIT, MICHIGAN

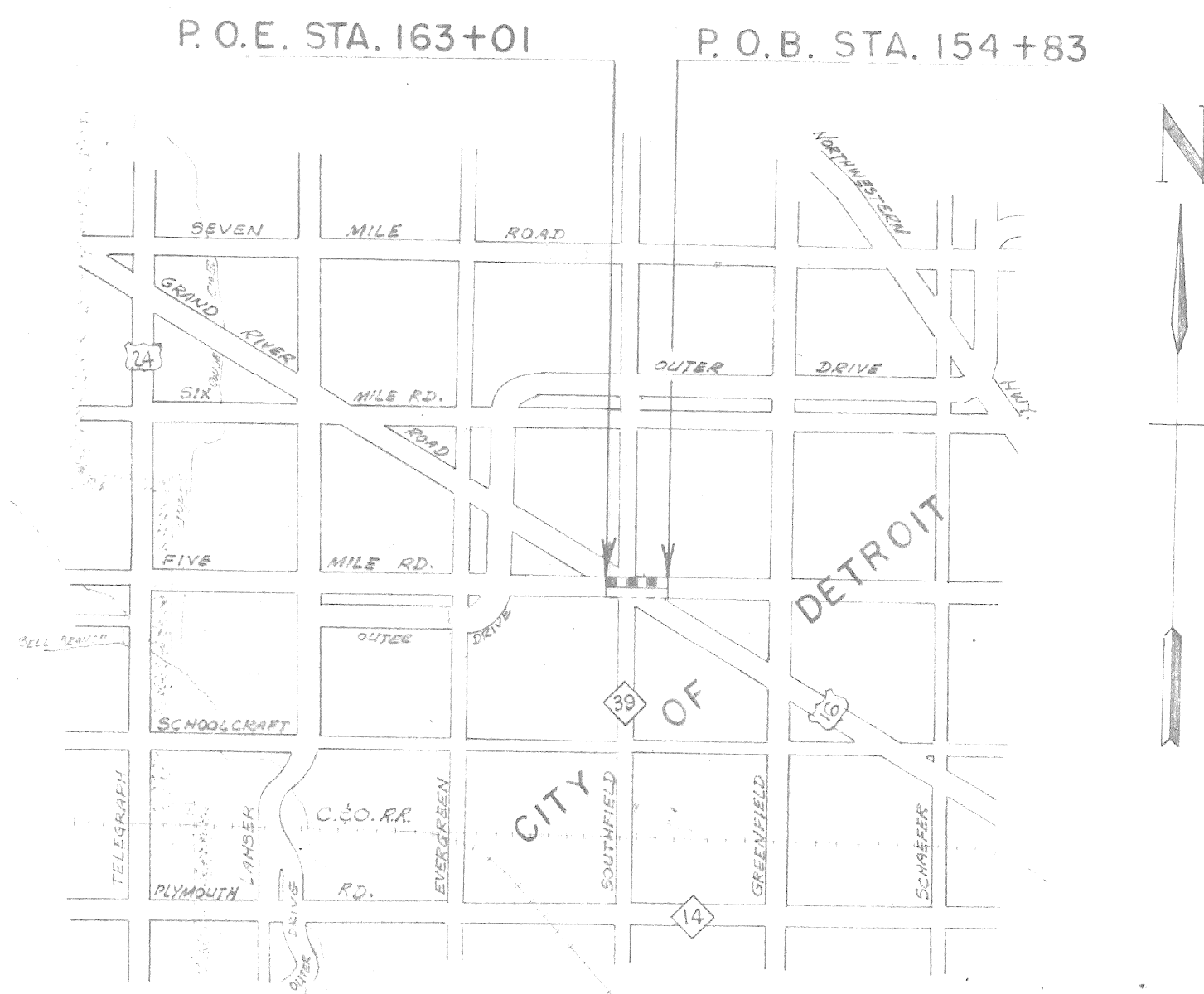
INDEX TO SHEETS
 1 TITLE SHEET
 2 TYPICAL CROSS-SECTION & PLAN AND PROFILE

==== □ =====
PLAN AND PROFILE OF PROPOSED
 FIVE MILE ROAD WIDENING
 ARCHDALE AVENUE TO GRAND RIVER ROAD

FIVE MI RD

STANDARD PLANS

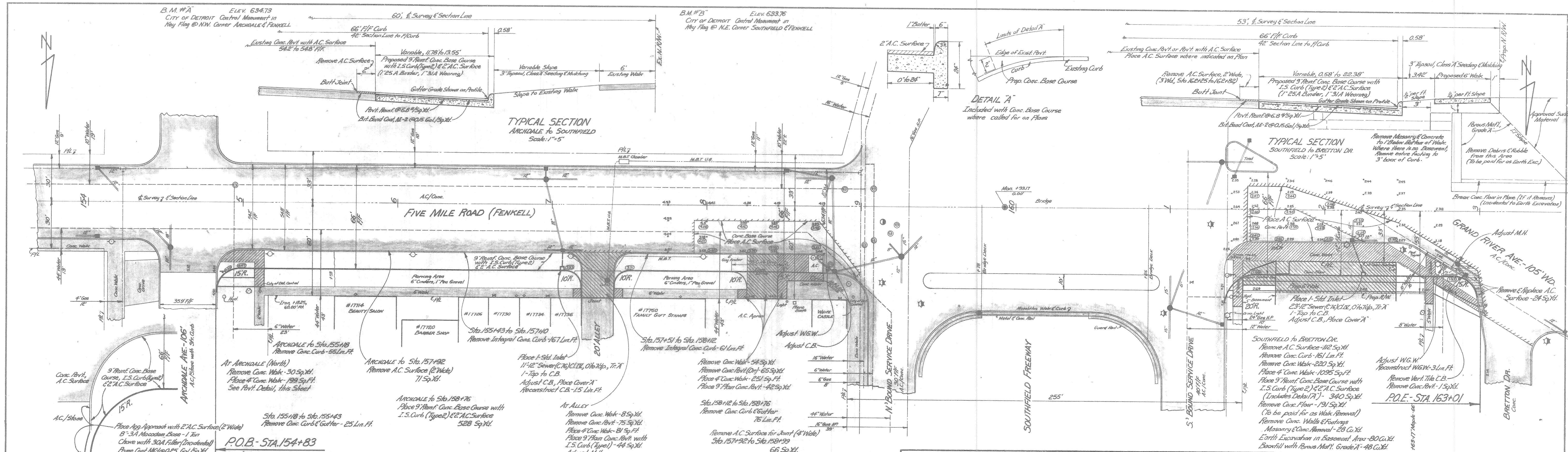
- C-17-1A
- C-17-1B
- C-17-1D
- C-17-1E
- C-17-1F
- C-17-1G



APPROVED *MJ Math*
 APPROVED *S. S. S. S.*

DATE: Aug 26, 1962
 SURVEYED BY: Asst. Supt. E.P.T.
 PLOTTED BY: E.P.T.
 NOTE BOOK NO.: 4-12
 ALIGNMENT CHECKED BY: E.P.T.
 RT. OF WAY CHECKED BY: E.P.T.

DATE: Aug 26, 1962
 SURVEYED BY: Asst. Supt. E.P.T.
 PLOTTED BY: E.P.T.
 NOTE BOOK NO.: 4-12
 STRUCTURE NOTATION CHNG.



REVISIONS							
NO.	ITEM	BY	DATE	NO.	ITEM	BY	DATE

NOTE: Place A.C. Surface where indicated to elevations shown thus: (E2)

BOARD OF WAYNE COUNTY ROAD COMMISSIONERS
 DETROIT 26, MICHIGAN

CHAIRMAN: _____ VICE-CHAIRMAN: _____

COMMISSIONER: _____

FIVE MILE ROAD

SCALE: 1" = 30'

DATE: Aug 26, 1962

TRANSIT BOOK: 7-4-11

LEVEL BOOK: L-4-12

DRAWN BY: E.P.T. CHECKED BY: G.P.J.

CORRECTED BY: M. J. [Signature]

APPROVED BY: [Signature]

