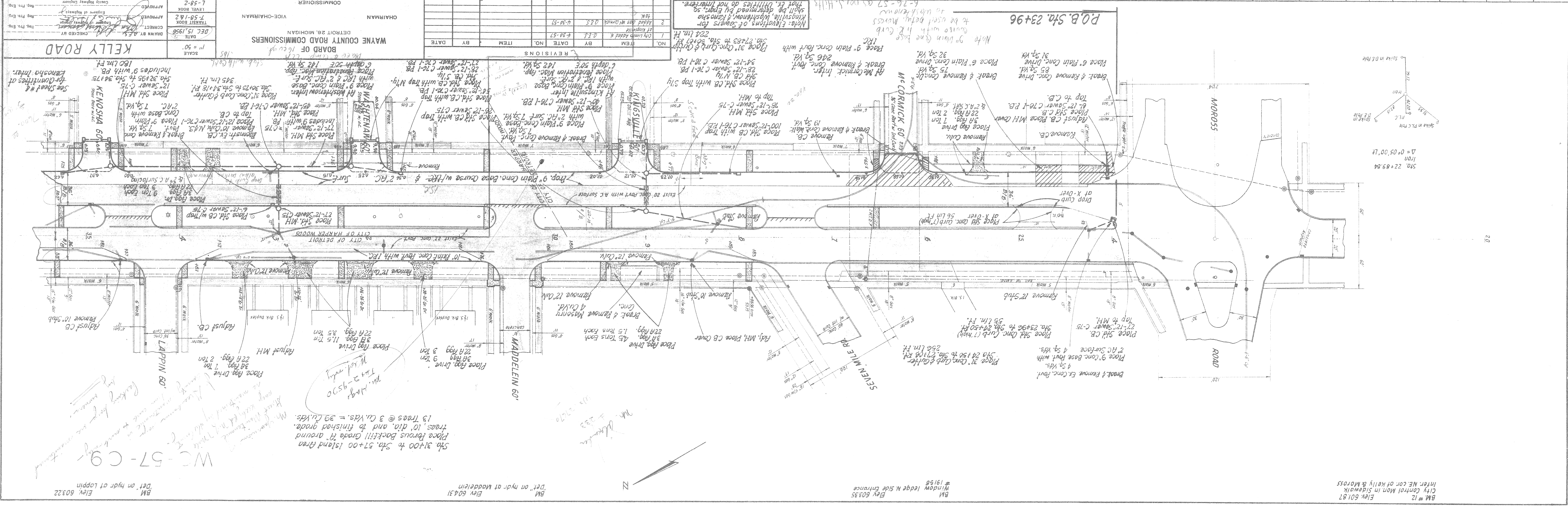
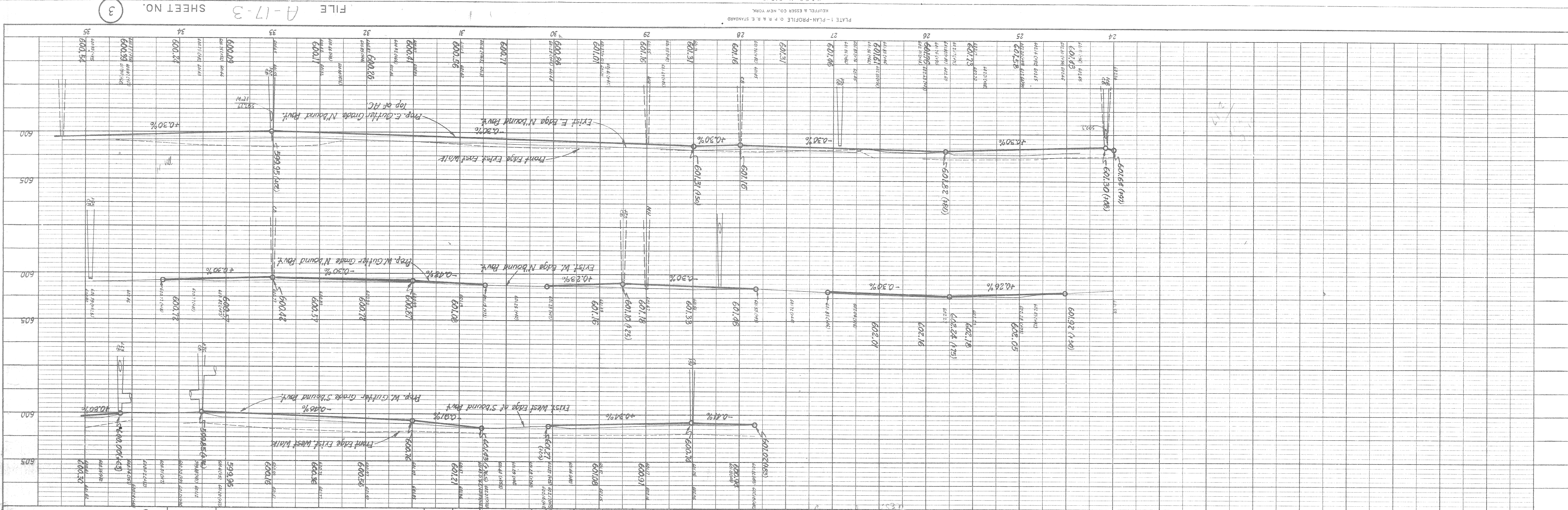


PROFILE	SUBMITTED	BY	DATE
NOTE BOOK	GRADES CHECKED		
NO.	BY		
	DATE		

PLAN	SUBMITTED	BY	DATE
NOTE BOOK	ALIGNMENT CHECKED		
NO.	BY		
	DATE		



KELLY ROAD

DATE: DEC. 15, 1958
 DRAWN BY: [Signature]
 CHECKED BY: [Signature]
 APPROVED BY: [Signature]

SCALE: 1" = 50'

COMMISSIONER: [Signature]
 VICE-CHAIRMAN: [Signature]
 CHAIRMAN: [Signature]

WAYNE COUNTY ROAD COMMISSIONERS
 DETROIT 26, MICHIGAN

BM #12 Elev 601.87 City Control Mon in Sidewalk Inter NE cor of Kelly & Morross

BM Elev 603.55 Windy ledge N side Entrance #1958

BM Elev 604.31 on hydr at Maddelein

BM Elev 603.22 on hydr of Loppin

WC-57-C9

Place 3/4" Conc. Sub (7" Top) Sta. 24+50 to Sta. 24+50.00
 4 5/8 Vts.
 Place 9" Conc. Base Course w/ 1/2" 2" AC Surface 4 5/8 Vts.
 Break & Remove Ex. Conc. Pavt.

Place 3/4" Conc. Sub (7" Top) Sta. 25+96 to Sta. 25+96.00
 4 5/8 Vts.
 Place 9" Conc. Base Course w/ 1/2" 2" AC Surface 4 5/8 Vts.
 Break & Remove Ex. Conc. Pavt.

Remove 12" Shub

Place 3/4" Conc. Sub (7" Top) Sta. 26+00 to Sta. 26+00.00
 4 5/8 Vts.
 Place 9" Conc. Base Course w/ 1/2" 2" AC Surface 4 5/8 Vts.
 Break & Remove Ex. Conc. Pavt.

Place 3/4" Conc. Sub (7" Top) Sta. 27+00 to Sta. 27+00.00
 4 5/8 Vts.
 Place 9" Conc. Base Course w/ 1/2" 2" AC Surface 4 5/8 Vts.
 Break & Remove Ex. Conc. Pavt.

Place 3/4" Conc. Sub (7" Top) Sta. 28+00 to Sta. 28+00.00
 4 5/8 Vts.
 Place 9" Conc. Base Course w/ 1/2" 2" AC Surface 4 5/8 Vts.
 Break & Remove Ex. Conc. Pavt.

Place 3/4" Conc. Sub (7" Top) Sta. 29+00 to Sta. 29+00.00
 4 5/8 Vts.
 Place 9" Conc. Base Course w/ 1/2" 2" AC Surface 4 5/8 Vts.
 Break & Remove Ex. Conc. Pavt.

Place 3/4" Conc. Sub (7" Top) Sta. 30+00 to Sta. 30+00.00
 4 5/8 Vts.
 Place 9" Conc. Base Course w/ 1/2" 2" AC Surface 4 5/8 Vts.
 Break & Remove Ex. Conc. Pavt.

Place 3/4" Conc. Sub (7" Top) Sta. 31+00 to Sta. 31+00.00
 4 5/8 Vts.
 Place 9" Conc. Base Course w/ 1/2" 2" AC Surface 4 5/8 Vts.
 Break & Remove Ex. Conc. Pavt.

Place 3/4" Conc. Sub (7" Top) Sta. 32+00 to Sta. 32+00.00
 4 5/8 Vts.
 Place 9" Conc. Base Course w/ 1/2" 2" AC Surface 4 5/8 Vts.
 Break & Remove Ex. Conc. Pavt.

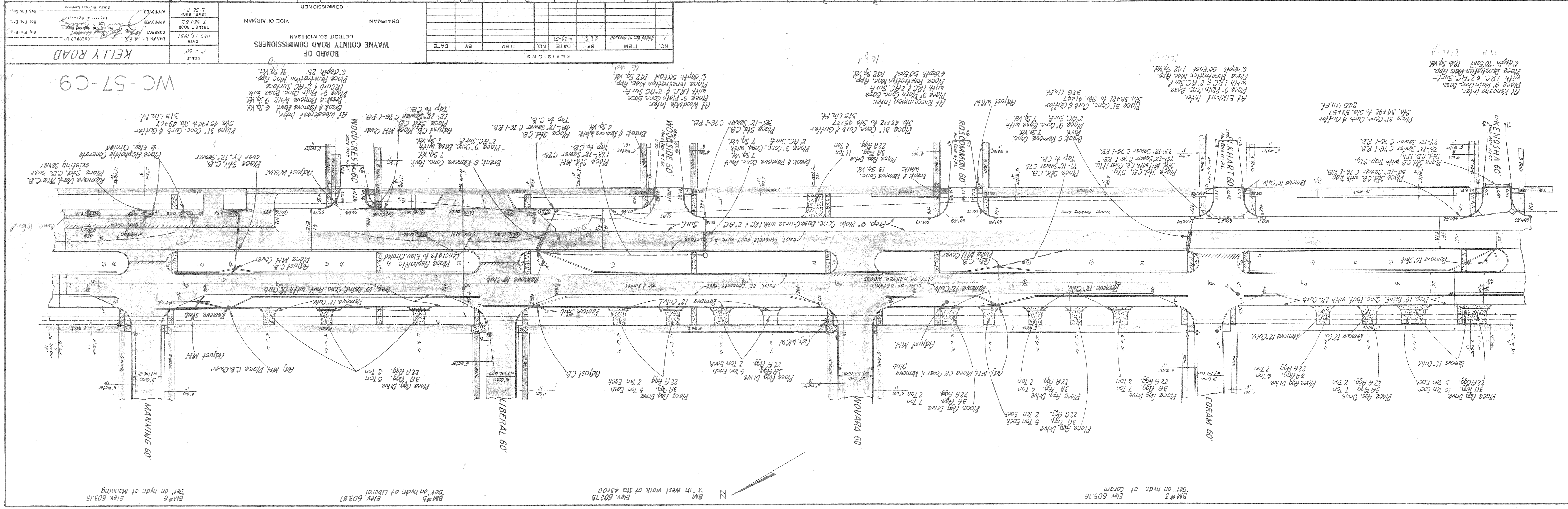
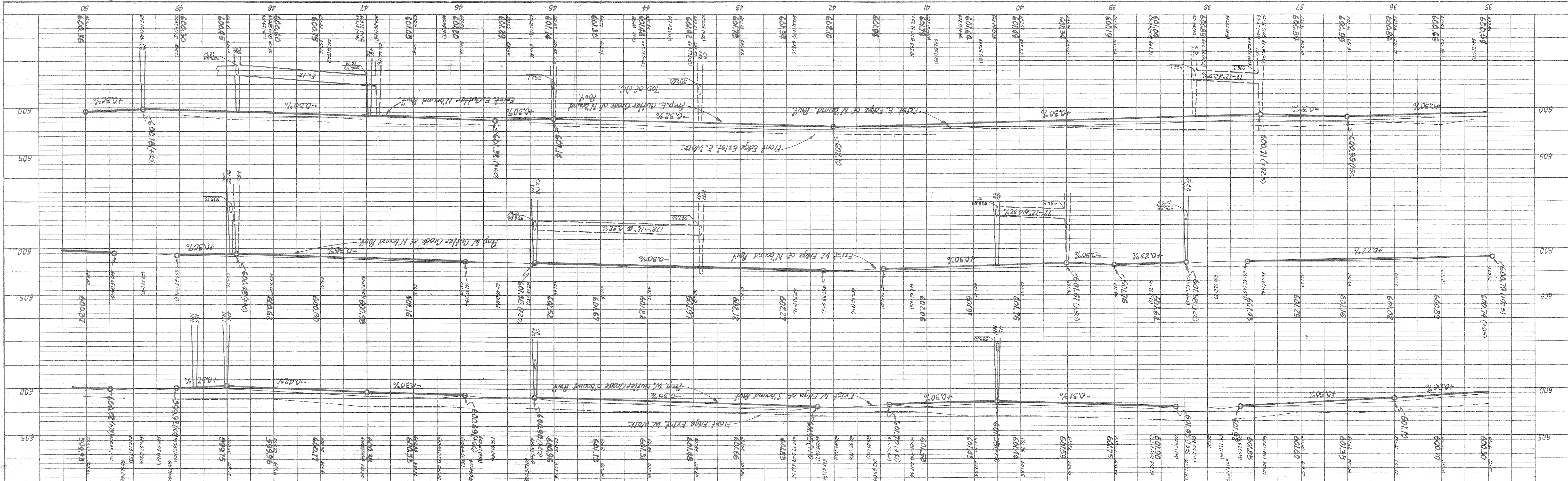
Place 3/4" Conc. Sub (7" Top) Sta. 33+00 to Sta. 33+00.00
 4 5/8 Vts.
 Place 9" Conc. Base Course w/ 1/2" 2" AC Surface 4 5/8 Vts.
 Break & Remove Ex. Conc. Pavt.

Place 3/4" Conc. Sub (7" Top) Sta. 34+00 to Sta. 34+00.00
 4 5/8 Vts.
 Place 9" Conc. Base Course w/ 1/2" 2" AC Surface 4 5/8 Vts.
 Break & Remove Ex. Conc. Pavt.

Place 3/4" Conc. Sub (7" Top) Sta. 35+00 to Sta. 35+00.00
 4 5/8 Vts.
 Place 9" Conc. Base Course w/ 1/2" 2" AC Surface 4 5/8 Vts.
 Break & Remove Ex. Conc. Pavt.

DATE	
BY	
STRUCTURE NOTATION SYMBOL	
PROJECT CHECKED	
NOTED	
PROFILE	

DATE	
BY	
ALIGNMENT CHECKED	
NOTED	
PLAN	



NO.	ITEM	BY	DATE
1	Revisions	J.S.	7-29-57

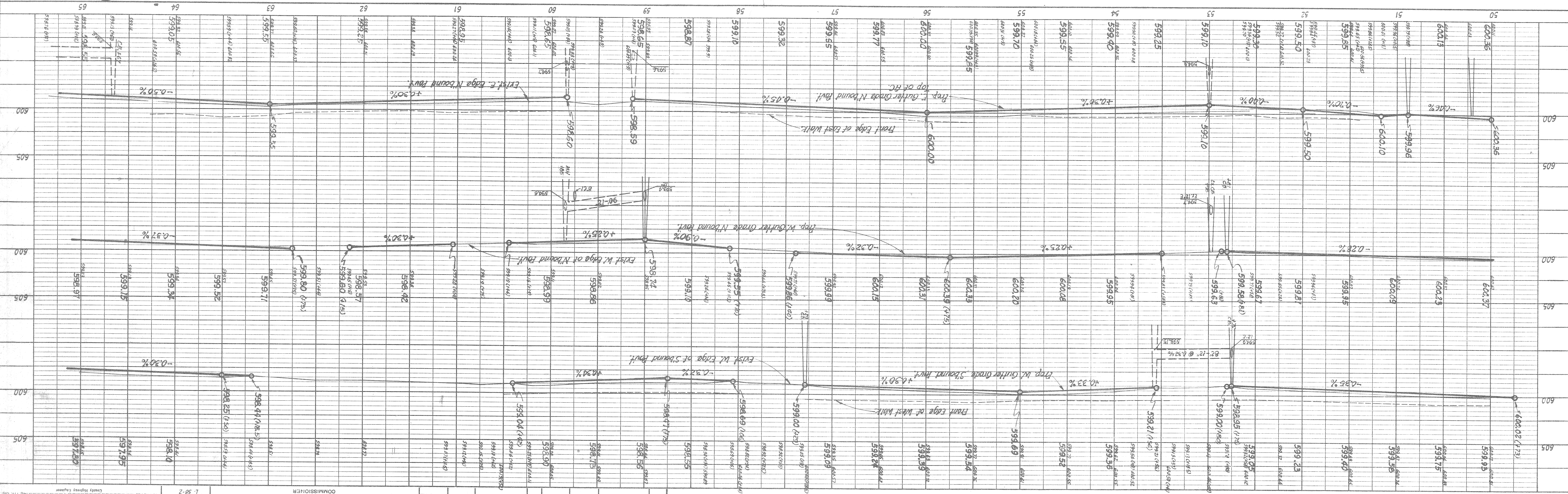
BOARD OF WAYNE COUNTY ROAD COMMISSIONERS
 CHAIRMAN
 VICE-CHAIRMAN
 COMMISSIONERS

KELLY ROAD
 SCALE 1" = 50'
 DRAWN BY A.S.
 CHECKED BY
 APPROVED
 APPROVED
 APPROVED

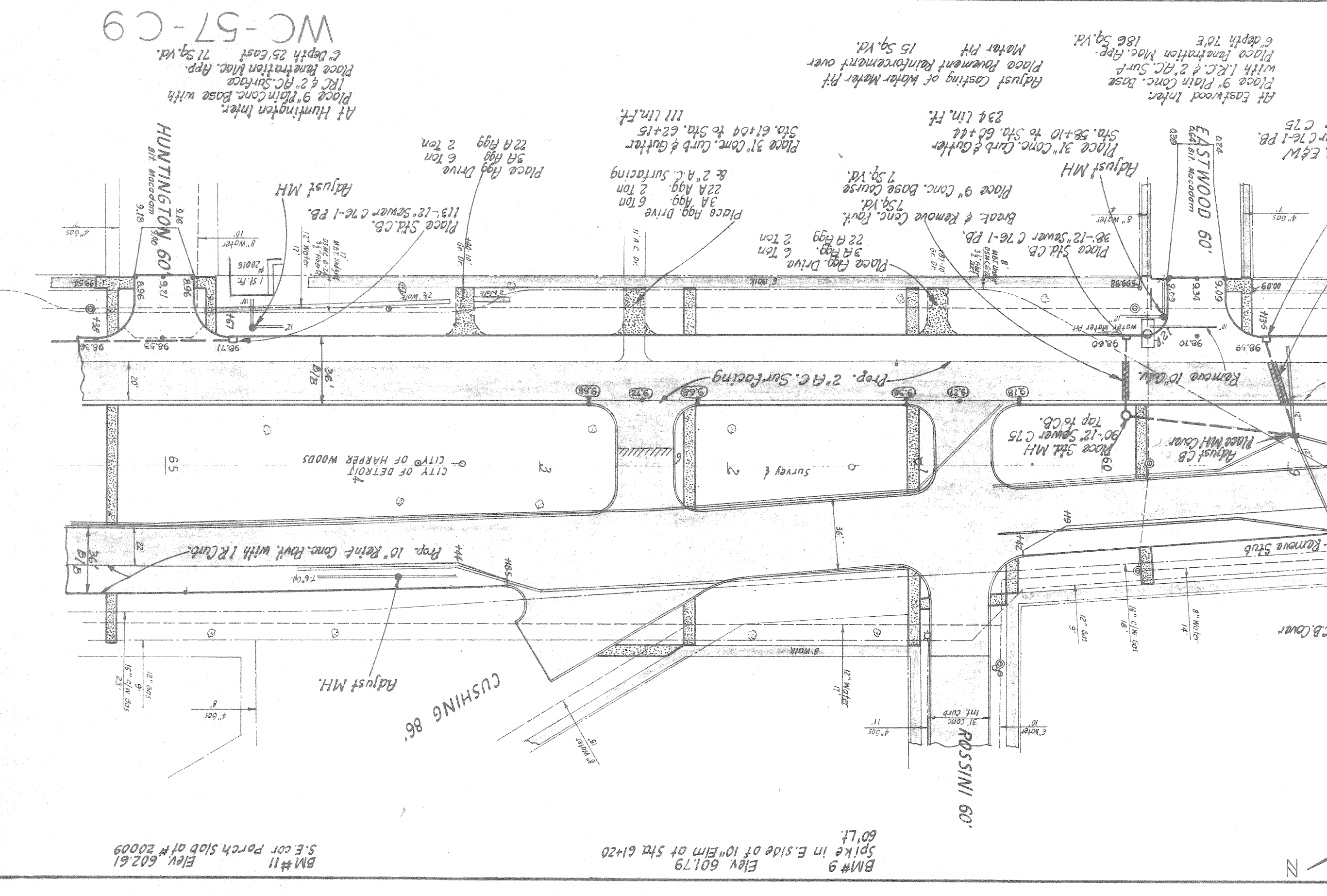
BM#3 Elev 605.76 Def on hydr. of Corom
 BM#5 Elev 603.87 Def on hydr. of Liberal
 BM#6 Elev 603.15 Def on hydr. of Manning

DATE	BY	PROFILER
		STRUCTURE NOTATION CHNO.
		NO. M.A. NOTED.
		GROSS CHECKED
		NO. M.A. NOTED.

DATE	BY	PLAN
		ALIGNMENT CHECKED
		NO. M.A. NOTED.
		NO. M.A. NOTED.



NO.	ITEM	BY	DATE



BM# 7 on hydr. of Tacoma Elev. 602.45
 BM# 8 on hydr. of State Fair Elev. 602.76
 BM# 9 Elev. 601.79 Spike in E side of 10' Elm at Sta 61+20
 5' E cor. porch slab of 20061 Elm. 602.61
 0 - CITY OF DETROIT
 HUNTINGTON INTER.

SCALE 1" = 50'
 DATE DEC 26 1956
 DRAWN BY A.E.S.
 CHECKED BY
 APPROVED BY
 COUNTY HIGHWAY ENGINEER
 BOARD OF WAYNE COUNTY ROAD COMMISSIONERS
 DETROIT 26, MICHIGAN
 VICE-CHAIRMAN
 CHAIRMAN

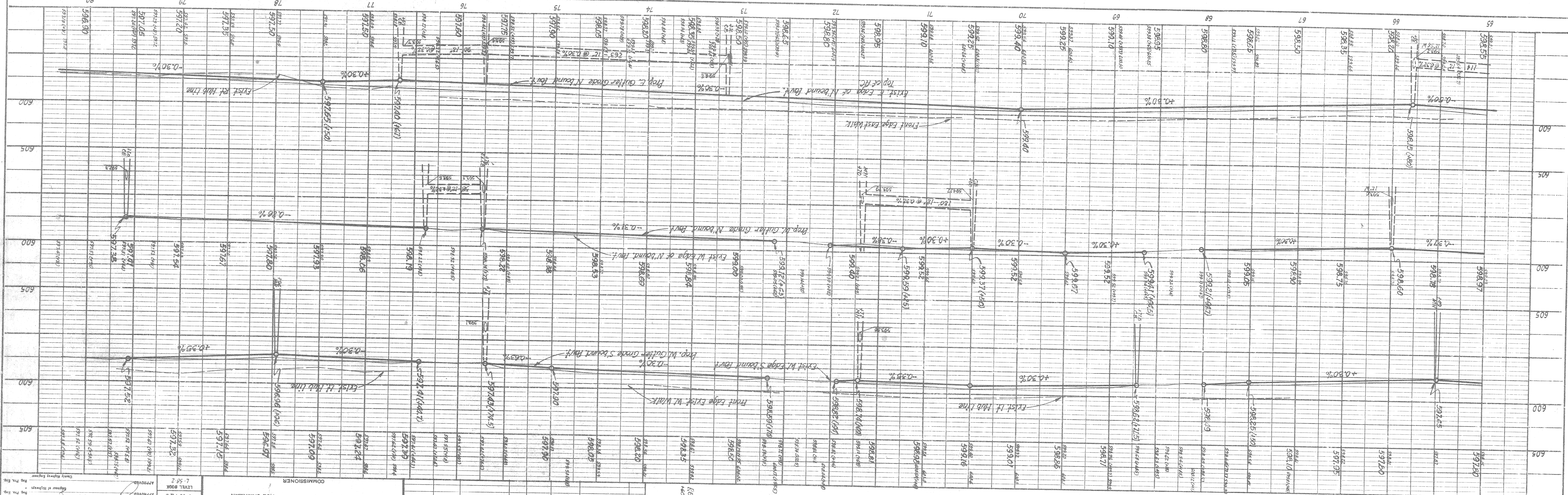
DATE	BY	REVISIONS

DATE	BY	REVISIONS

DATE	BY	REVISIONS

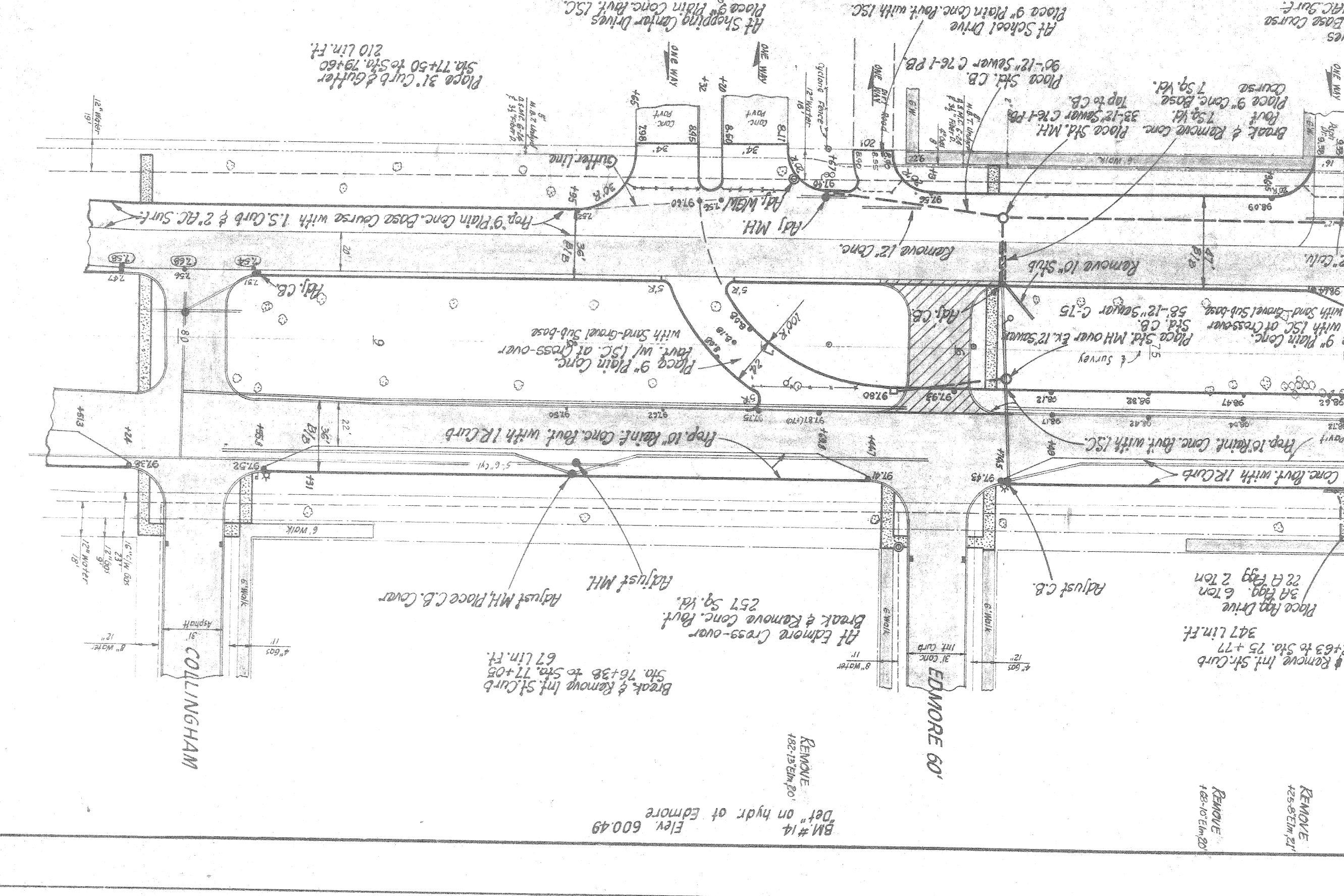
DATE	BY	REVISIONS

PLATE I-PLAN PROFILE & P. R. STADYARD
FREDERICK POST CO., CHICAGO, 2614



NO.	ITEM	DATE	BY

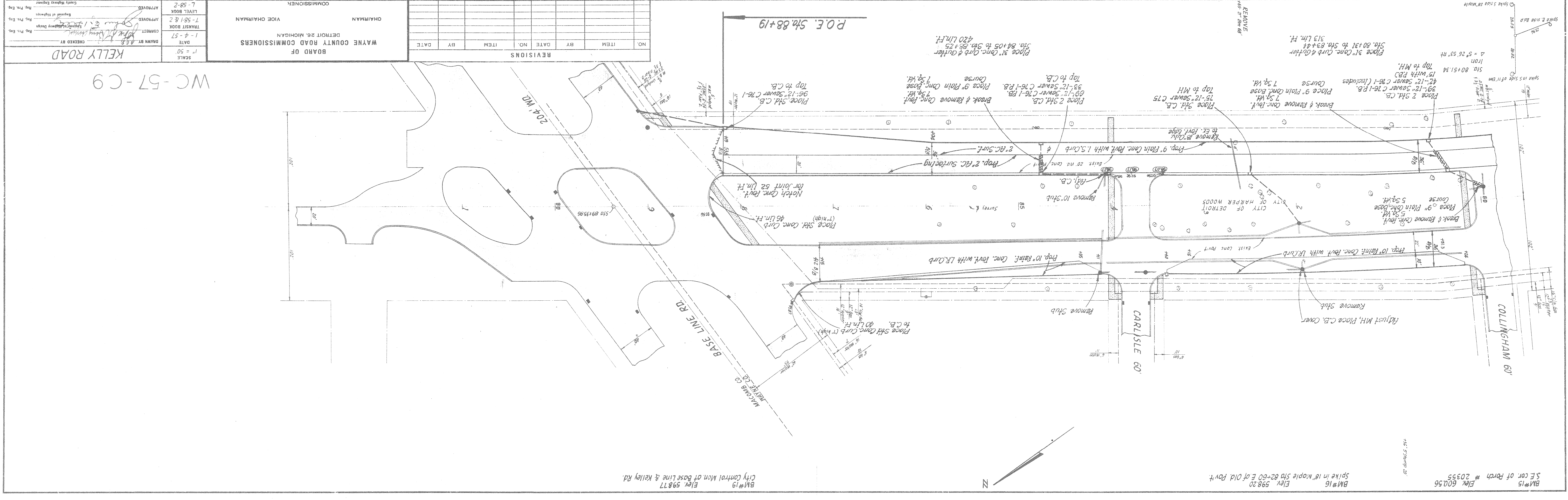
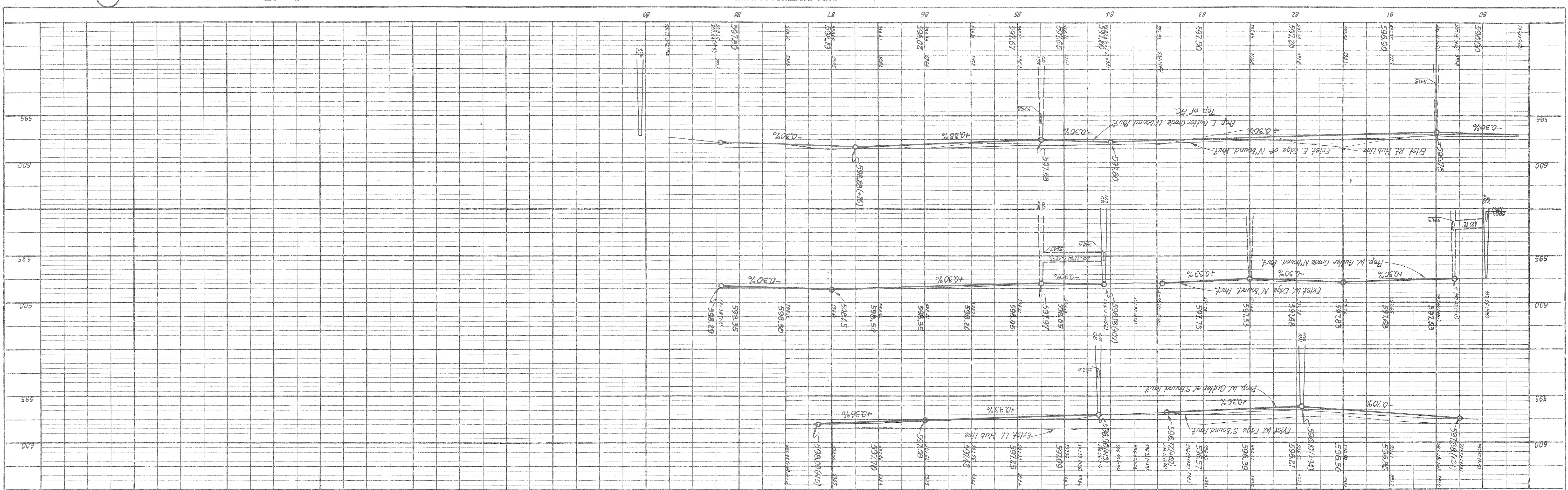
REVISIONS



Scale: 1" = 50'
 DATE: OCT 27 1956
 BOARD OF WAYNE COUNTY ROAD COMMISSIONERS
 DETROIT 26, MICHIGAN
 CHAIRMAN: [Signature]
 VICE CHAIRMAN: [Signature]
 COMMISSIONERS: [List of names]

PROFILE	DATE	BY
SUBMITTED		
PLANNED		
NOTED		
NOTED		
NOTED		
NOTED		

PLAN	DATE	BY
SUBMITTED		
PLANNED		
NOTED		
NOTED		
NOTED		
NOTED		



NO.	ITEM	BY	DATE

BOARD OF
 WAYNE COUNTY ROAD COMMISSIONERS
 DETROIT 26, MICHIGAN
 VICE CHAIRMAN
 CHAIRMAN
 COMMISSIONER
 SCALE 1" = 50'
 DATE 1-4-57
 DRAWN BY E.E.B.
 CHECKED BY
 TRANSMIT BOOK
 T-56182
 APPROVED
 L-56-2
 CITY CONTROL MEN AT BASE LINE & KELLEY RD.
 ELEV. 598.17
 BM#19

WC-57-C9