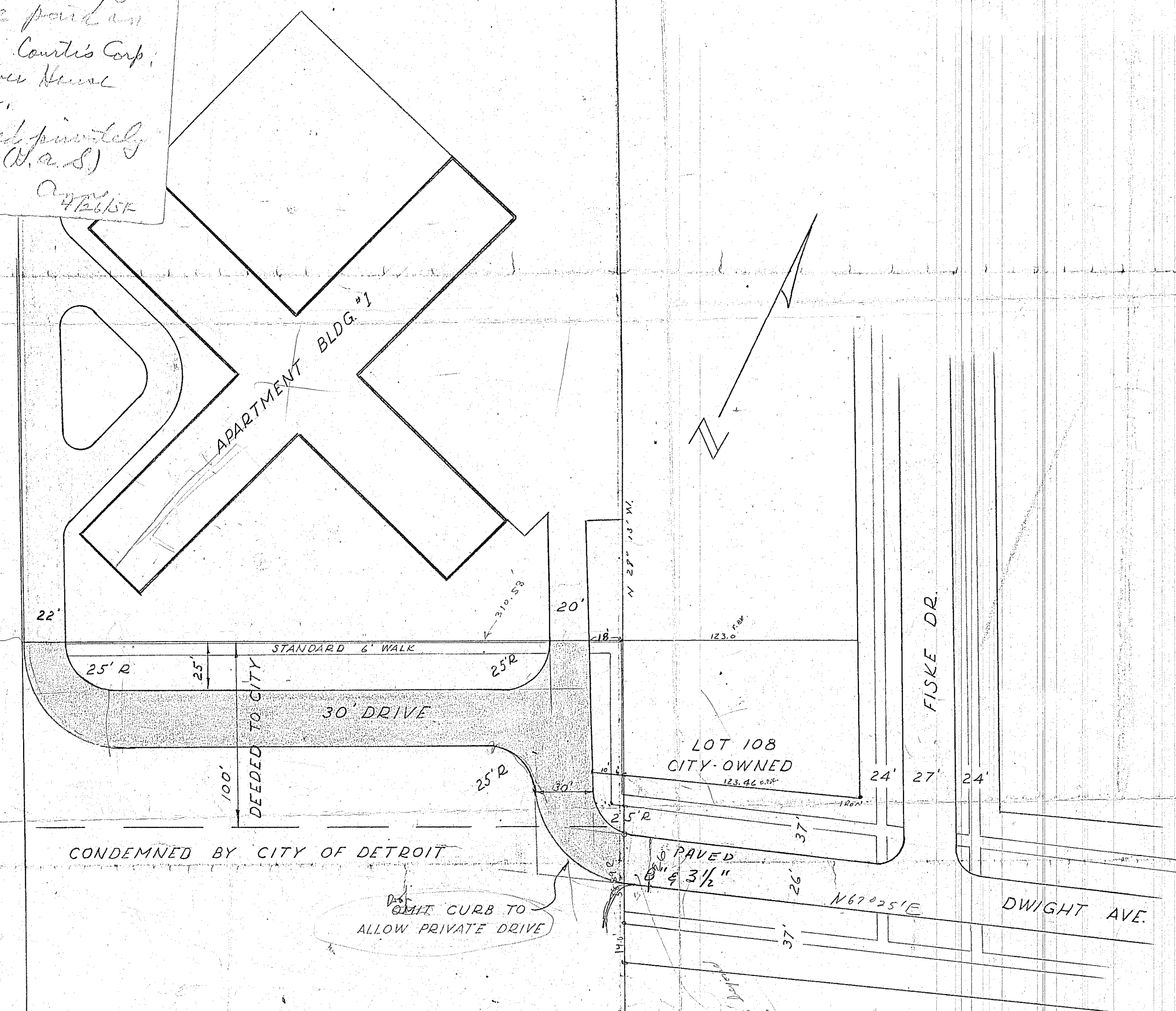


Entire cost of paving
Dwight to be paid in
advance by Curtis Corp.
and/or One River House
Cooperatives Inc.
May be paved privately
with roadways. (N.A.S.)
Approved
4/26/54

commodating the traffic to and from
the said proposed development, both
during and after construction, so as
not to cause a detrimental increase in
traffic on residential streets immedi-
ately eastery of this development.
Now, Therefore, Be It
Resolved, That the Department of
Public Works be and is hereby author-
ized to proceed with the paving of
the above described portion of Dwight
Avenue in accordance with attached
Drawing 982-1 and in accordance with
the specifications of the City of De-
troit: Provided, That the said Curtis
Corporation and the said One River
Coop.



Ordered by C.C.
4/20/1954
See C.C. Resolution

New curb and
5/13/54
Behr

ACCESS AT SOUTH END OF COURTIS PROPERTY
DETROIT CITY PLAN COMM.
R. E. DUNLAVEY
FEB. 22, 1954
SLY. ACCESS DRWG. No. 1
1"-40'

DETROIT CITY PLAN COMMISSION			
PAVE DWIGHT AVE. EXTENSION WESTERLY OF FISKE DR.			
SCALE 1"=40'		DATE 2-28-54 PLAN NO. 982-1	
STUDIED	CHECKED	REVISED	
BY J.B.E.	APPROVED	REVISION	