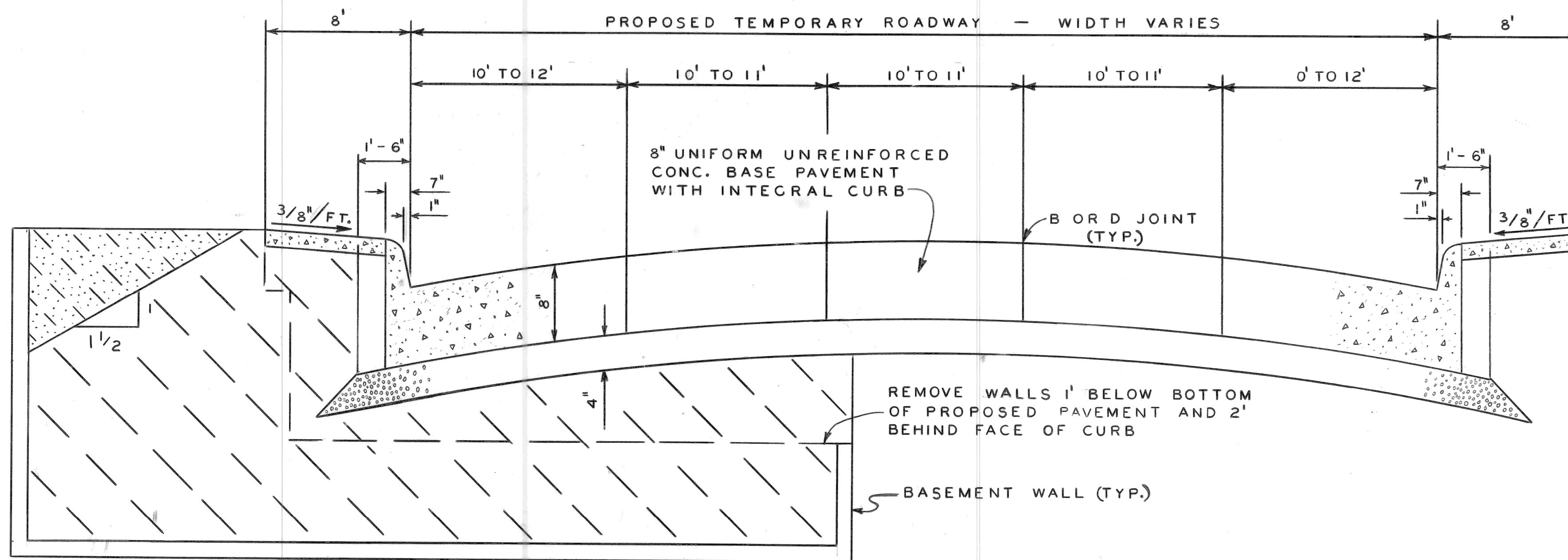


TYPICAL PAVEMENT SECTION FOR 57' ROADWAY
NO SCALE

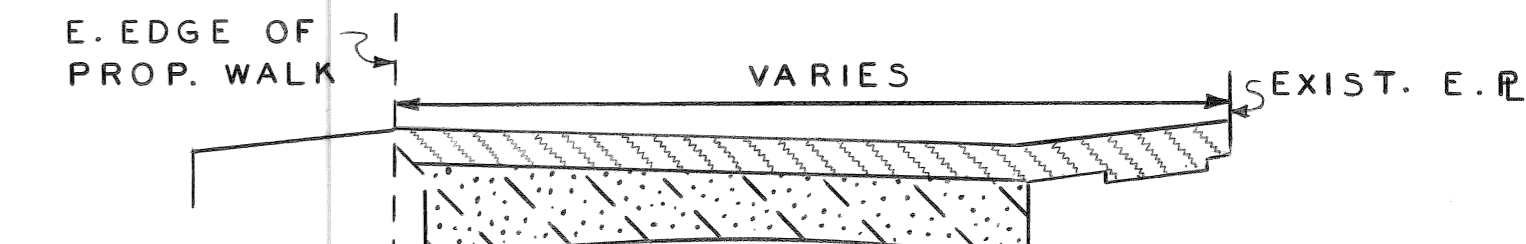


TYPICAL PAVEMENT SECTION FOR TEMPORARY ROADWAY
NO SCALE

LEGEND FOR PAVEMENT SECTIONS

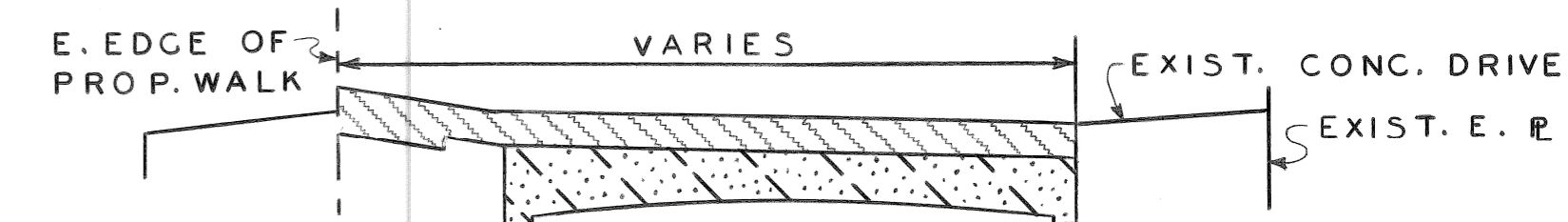
- PROPOSED CONCRETE
- 4 1/2" TOPSOIL PLUS SEEDING
- FILL (22 A)
- FILL (GRADE A)
- FILL - SELECTED EXCAVATED MATERIAL

NOTE —
APPROXIMATELY 435 CYDS. OF
OF FILL (EXC. MATERIAL) ARE
REQUIRED FOR SHEET



TYPICAL FILL SECTION — SHEET

NOTE —
APPROXIMATELY 1271 CYDS.
OF FILL (EXC. MATERIAL)
ARE REQUIRED FOR SHEET



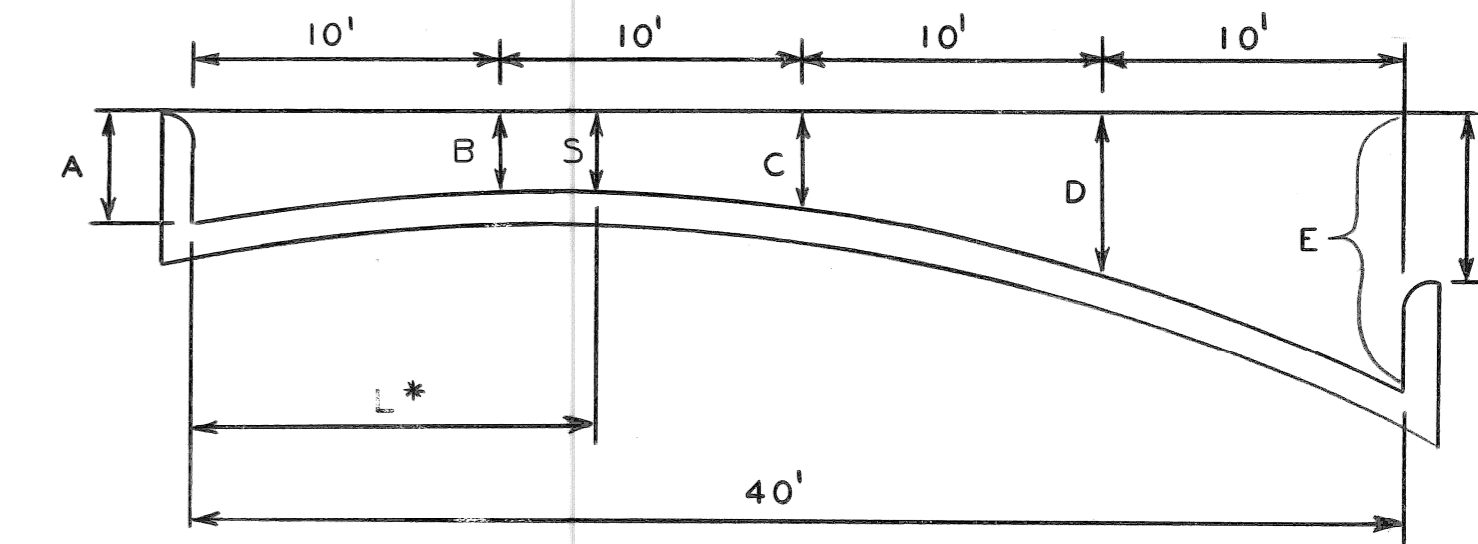
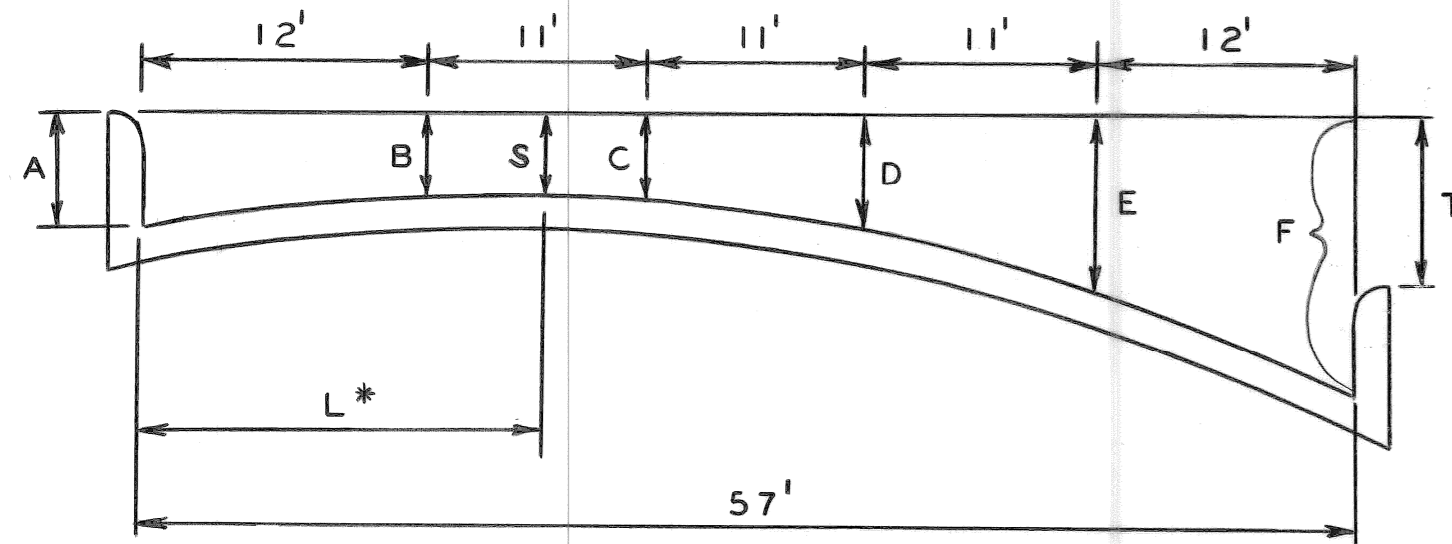
TYPICAL FILL SECTION — SHEET

ELEMENTS FOR 40' ROADWAY

| PAVEMENT WIDTH | CURB FACE | T | A | B | C | D | E | L* | S |
|----------------|-----------|-----|-------|-------|-------|-------|-------|------|-------|
| 40' | 7" | 0 | 0.583 | 0.270 | 0.166 | 0.271 | 0.583 | 20.0 | 0.166 |
| | | 0.1 | 0.583 | 0.295 | 0.216 | 0.345 | 0.683 | 18.8 | 0.215 |
| | | 0.2 | 0.583 | 0.320 | 0.266 | 0.420 | 0.783 | 17.6 | 0.260 |
| | | 0.3 | 0.583 | 0.345 | 0.316 | 0.495 | 0.883 | 16.4 | 0.303 |
| | | 0.4 | 0.583 | 0.370 | 0.366 | 0.570 | 0.983 | 15.2 | 0.342 |
| | | 0.5 | 0.583 | 0.395 | 0.416 | 0.645 | 1.083 | 14.0 | 0.379 |
| | | 0.6 | 0.583 | 0.420 | 0.466 | 0.721 | 1.183 | 12.8 | 0.412 |
| | | 0.7 | 0.583 | 0.445 | 0.516 | 0.795 | 1.283 | 11.6 | 0.443 |
| | | 0.8 | 0.583 | 0.470 | 0.566 | 0.870 | 1.383 | 10.4 | 0.470 |

ELEMENTS FOR 57' ROADWAY

| PAVEMENT WIDTH | CURB FACE | T | A | B | C | D | E | F | L* | S |
|----------------|-----------|-----|-------|-------|-------|-------|-------|-------|------|-------|
| 57' | 7" | 0 | 0.583 | 0.267 | 0.126 | 0.126 | 0.267 | 0.583 | 28.5 | 0.108 |
| | | 0.1 | 0.583 | 0.288 | 0.166 | 0.186 | 0.346 | 0.683 | 27.0 | 0.157 |
| | | 0.2 | 0.583 | 0.309 | 0.206 | 0.246 | 0.425 | 0.783 | 25.5 | 0.203 |
| | | 0.3 | 0.583 | 0.330 | 0.246 | 0.306 | 0.504 | 0.883 | 24.0 | 0.246 |
| | | 0.4 | 0.583 | 0.351 | 0.286 | 0.366 | 0.583 | 0.983 | 22.5 | 0.287 |
| | | 0.5 | 0.583 | 0.372 | 0.326 | 0.426 | 0.662 | 1.083 | 21.0 | 0.325 |
| | | 0.6 | 0.583 | 0.393 | 0.366 | 0.486 | 0.741 | 1.183 | 19.5 | 0.361 |
| | | 0.7 | 0.583 | 0.414 | 0.406 | 0.546 | 0.820 | 1.283 | 18.0 | 0.394 |
| | | 0.8 | 0.583 | 0.435 | 0.446 | 0.606 | 0.899 | 1.383 | 16.5 | 0.424 |



| COORD | DESCRIPTION | DRN | CHK'D | AP'D | DATE |
|-------|---|-----|-------|------|------|
| | REVISIONS LOCATED BY COORDINATES ON SHEET | | | | |

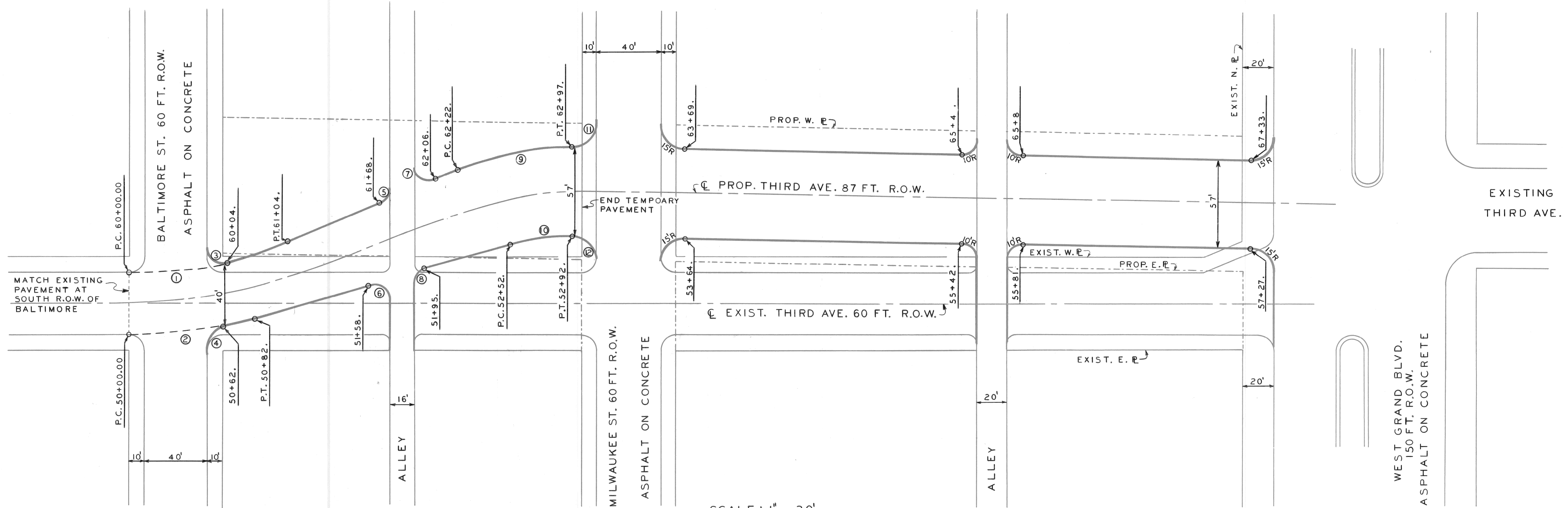
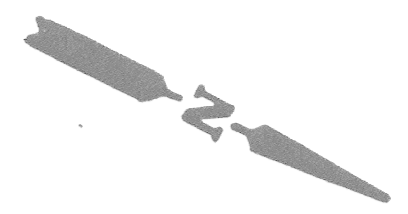
| | | | |
|--------------------|-------------|------|---------------------|
| REFERENCE DRAWINGS | DESIGNED BY | M.K. | APPROVED: |
| | DRAWN BY | M.K. | ENGINEER OF STREETS |
| | TRACED BY | | HIGHWAY ENGINEER |
| | CHECKED BY | | |

| | |
|--|--|
| | |
|--|--|

CITY OF DETROIT
CITY ENGINEERING DEPARTMENT
BUREAUS OF STREETS AND HIGHWAYS
FOR

RELOCATION AND WIDENING OF THIRD AVE. FROM
BALTIMORE TO WEST GRAND BLVD.
AND
MISCELLANEOUS CONSTRUCTION
TYPICAL SECTIONS

| | | | | |
|----------------|----------|----|----|--------|
| SHEET | 2 | OF | 11 | SHEETS |
| CONTRACT NO. | | | | |
| ASSIGNMENT NO. | 88-60-04 | | | |
| DATE | | | | |

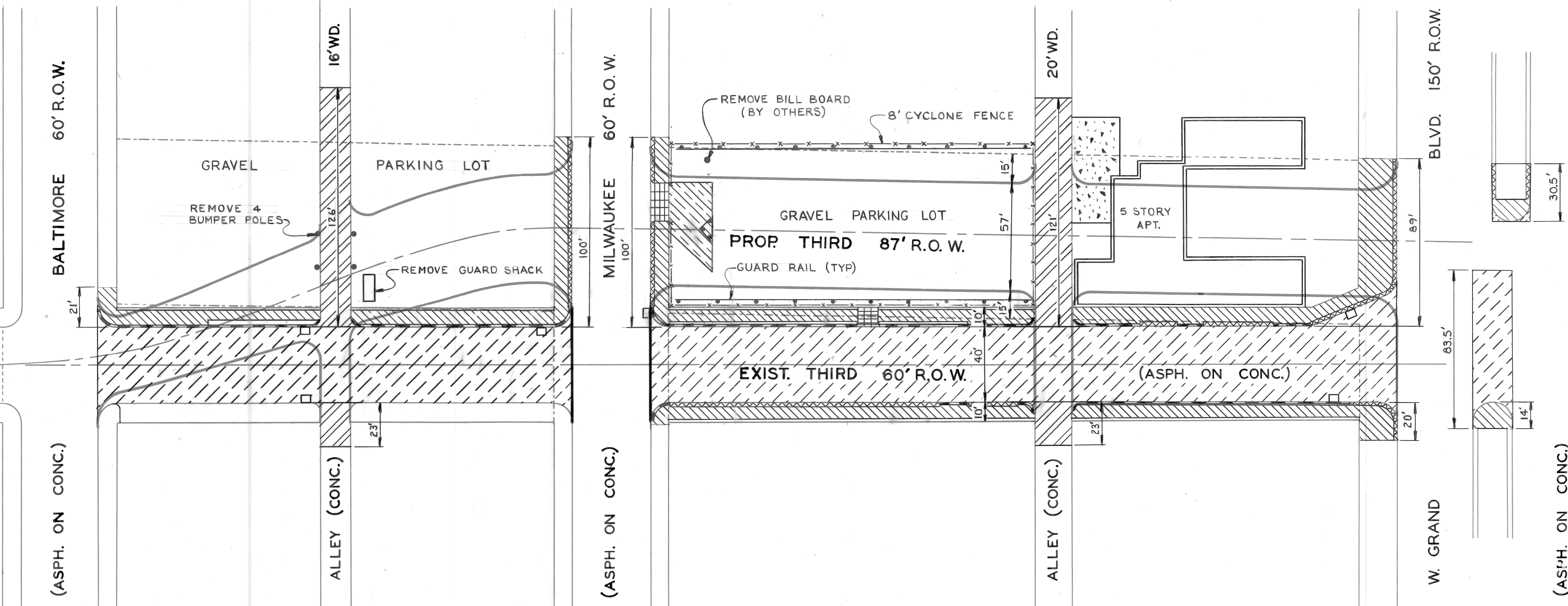
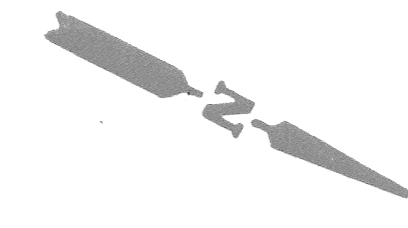


SCALE : 1" = 30'

CURVE DATA

| | | | |
|---|---|---|---|
| ① Δ = 21° - R = 275' T = 52. L = 104. C = 103. | ④ Δ = 78° - R = 15' T = 12. L = 20. C = 19. | ⑦ Δ = 111° - R = 10' T = 14. L = 19. C = 16. | ⑩ Δ = 15° - R = 153' T = 20. L = 40. C = 40. |
| ② Δ = 15° - R = 315' T = 41. L = 82. C = 82. | ⑤ Δ = 68° - R = 10' T = 6. L = 11. C = 11. | ⑧ Δ = 74° - R = 10' T = 7. L = 13. C = 12. | ⑪ Δ = 91° - R = 15' T = 15. L = 23. C = 21. |
| ③ Δ = 103° - R = 10' T = 12. L = 17. C = 15. | ⑥ Δ = 105° - R = 10' T = 13. L = 18. C = 15. | ⑨ Δ = 21° - R = 200' T = 38. L = 75. C = 74. | ⑫ Δ = 88° - R = 15' T = 14. L = 23. C = 20. |

| | | | | | | |
|---|--------------------|----------------------------|-----------|--|--|--|
| | REFERENCE DRAWINGS | DESIGNED BY M.K. | APPROVED: | CITY OF DETROIT CITY ENGINEERING DEPARTMENT BUREAU OF STREETS AND HIGHWAYS FOR | RELOCATION AND WIDENING OF THIRD AVE. FROM BALTIMORE TO WEST GRAND BLVD. AND MISCELLANEOUS CONSTRUCTION ALIGNMENT SHEET | SHEET 3 OF 11 SHEETS CONTRACT NO. ASSIGNMENT NO. 88-60-04 DATE |
| COORD | DESCRIPTION | DRN | CK'D | APVD | DATE | |
| REVISIONS LOCATED BY COORDINATES ON SHEET | | | | | | |



REMOVAL LEGEND

- STREET PAVEMENT REMOVAL
- ALLEY PAVEMENT REMOVAL
- SIDEWALK REMOVAL
- DRIVEWAY REMOVAL
- CONCRETE SLAB REMOVAL
- ASPHALT SLAB REMOVAL
- DEMOLISHED BUILDING WITH BASEMENT
- SEPARATE TYPE CURB REMOVAL
- INTEGRAL CURB WITH WALK REMOVAL
- REMOVE CYCLONE FENCE
- REMOVE GUARD RAIL

NOTES:

REMOVE APPROXIMATELY 108, 8'-FT LONG CONCRETE BUMPER CURBS WITHIN PARKING LOTS TO BE REMOVED.

| COORD | DESCRIPTION | DRN | CHK'D | APVD | DATE |
|-------|-------------|-----|-------|------|------|
| | | | | | |
| | | | | | |
| | | | | | |

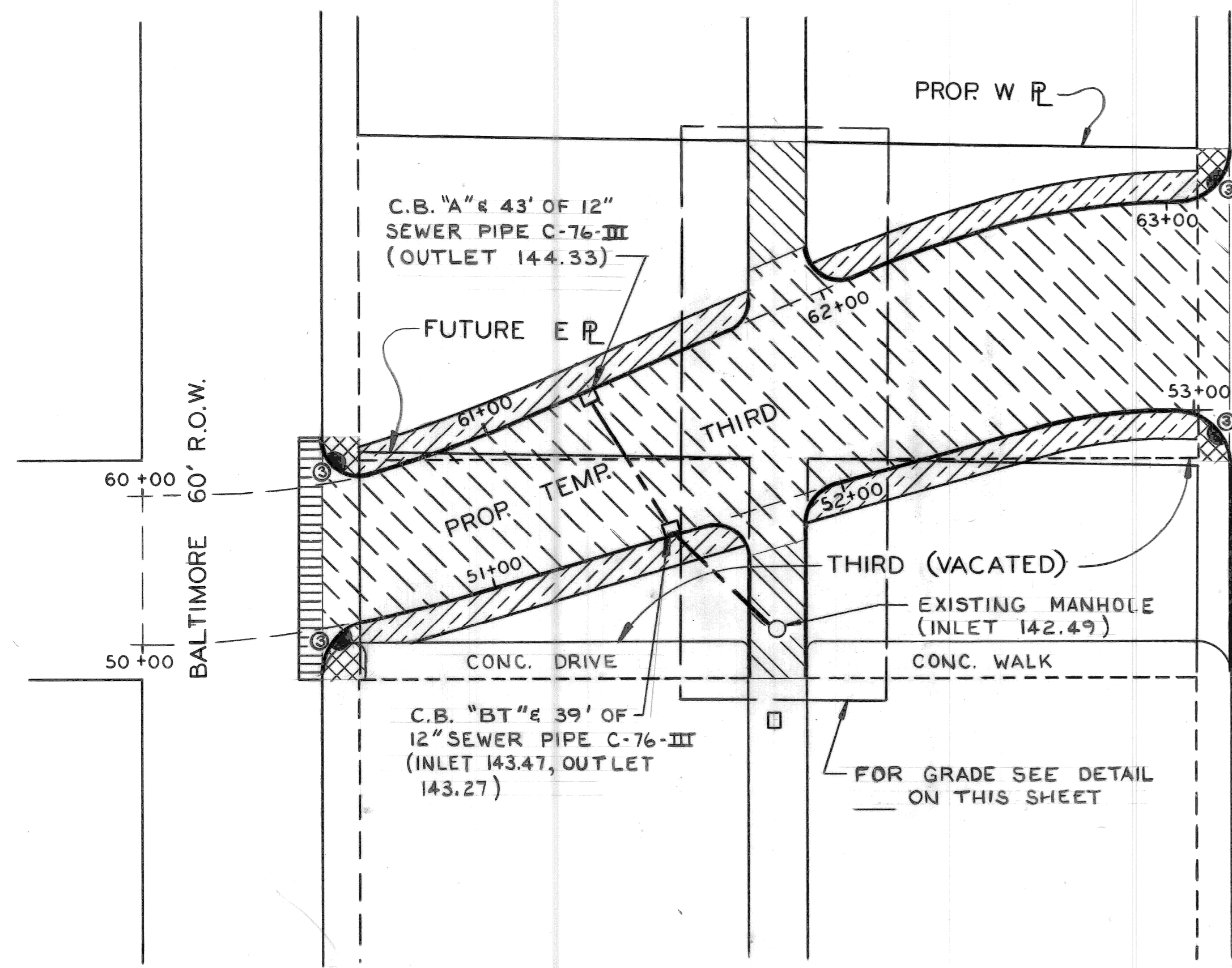
| | | |
|--------------------|------------------------------|---------------------|
| REFERENCE DRAWINGS | DESIGNED BY ABrown | APPROVED: |
| | DRAWN BY M.K. | ENGINEER OF STREETS |
| | TRACED BY | HIGHWAY ENGINEER |
| | CHECKED BY | |

| |
|--|
| |
| |
| |
| |

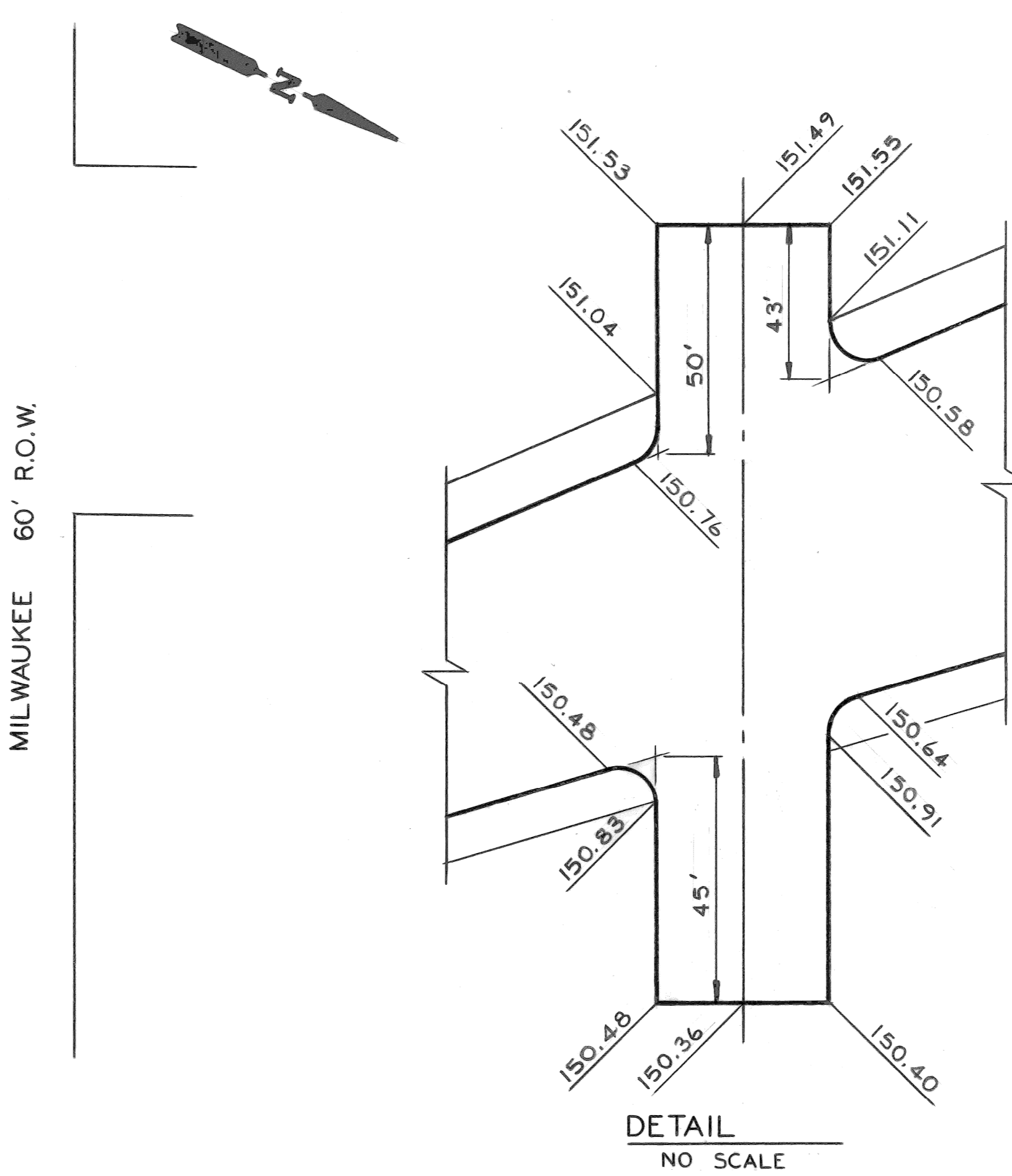
CITY OF DETROIT
CITY ENGINEERING DEPARTMENT
BUREAUS OF STREETS AND HIGHWAYS
FOR

RELOCATION AND WIDENING OF THIRD AVE. FROM
BALTIMORE TO WEST GRAND BLVD.
AND
MISCELLANEOUS CONSTRUCTION
REMOVAL PLAN

| |
|------------------------------------|
| SHEET 4 OF 11 SHEETS |
| CONTRACT NO. |
| ASSIGNMENT NO. 88-60-04 |
| DATE |



SCALE: 1"=30'

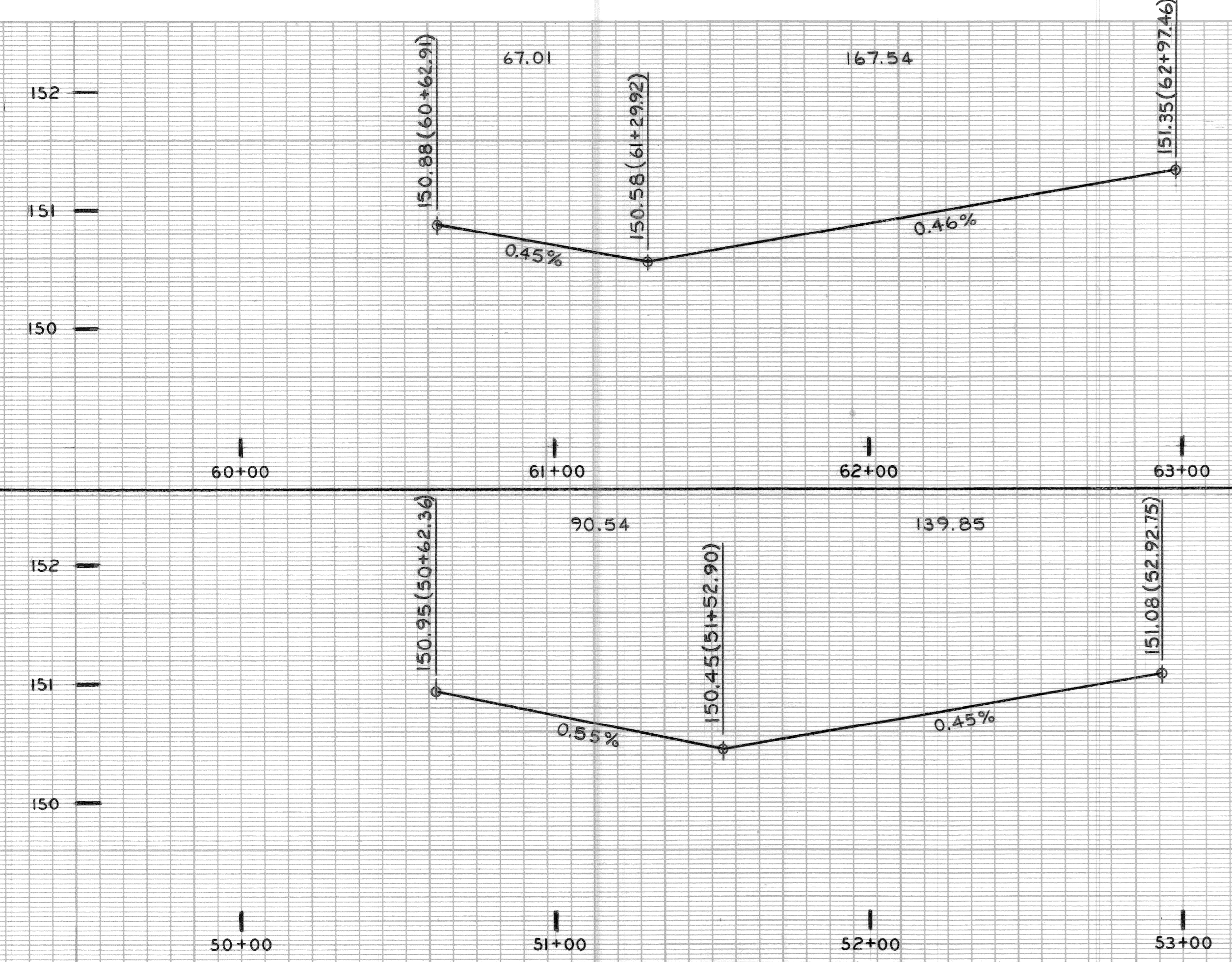


DETAIL
NO SCALE

CONSTRUCTION LEGEND

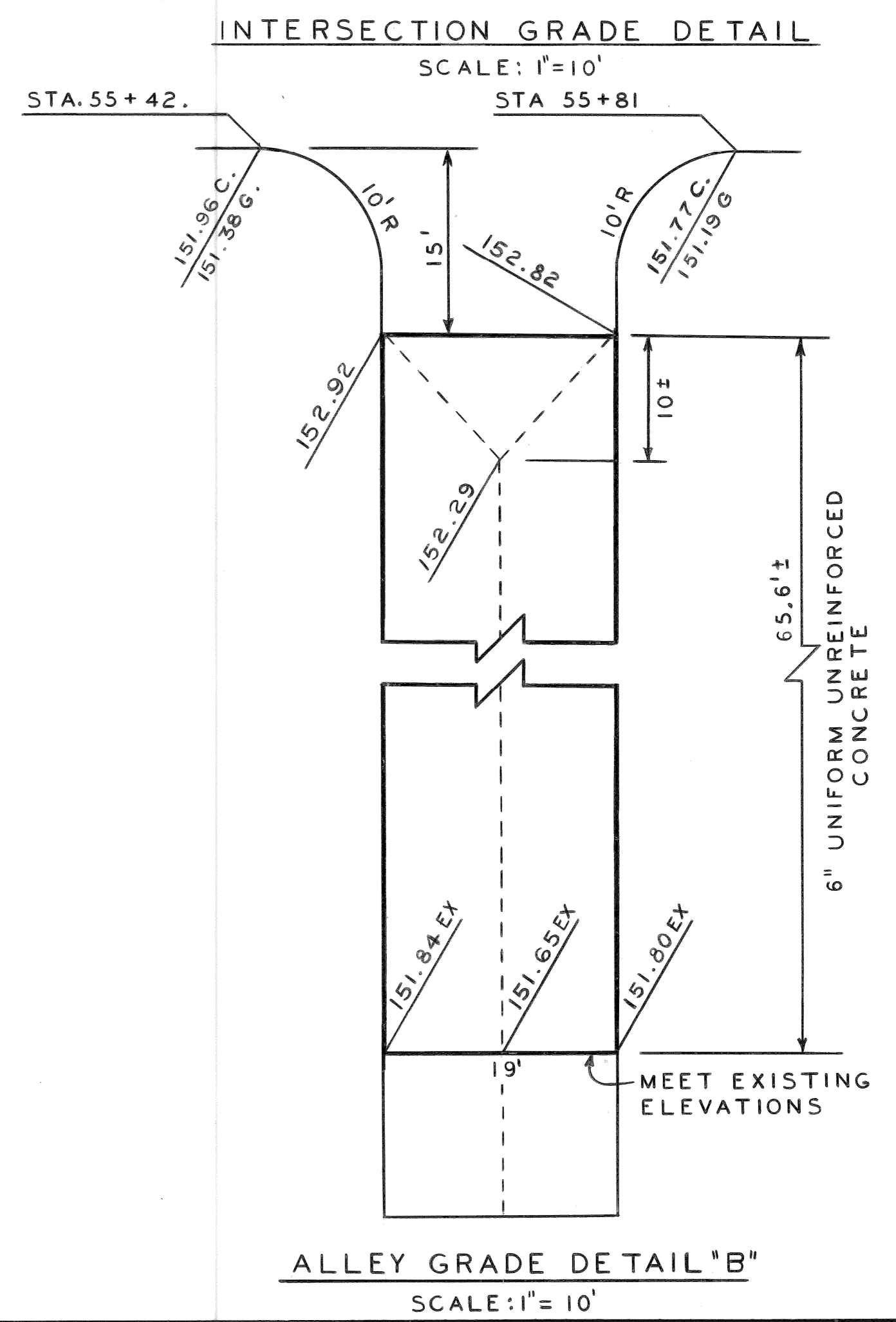
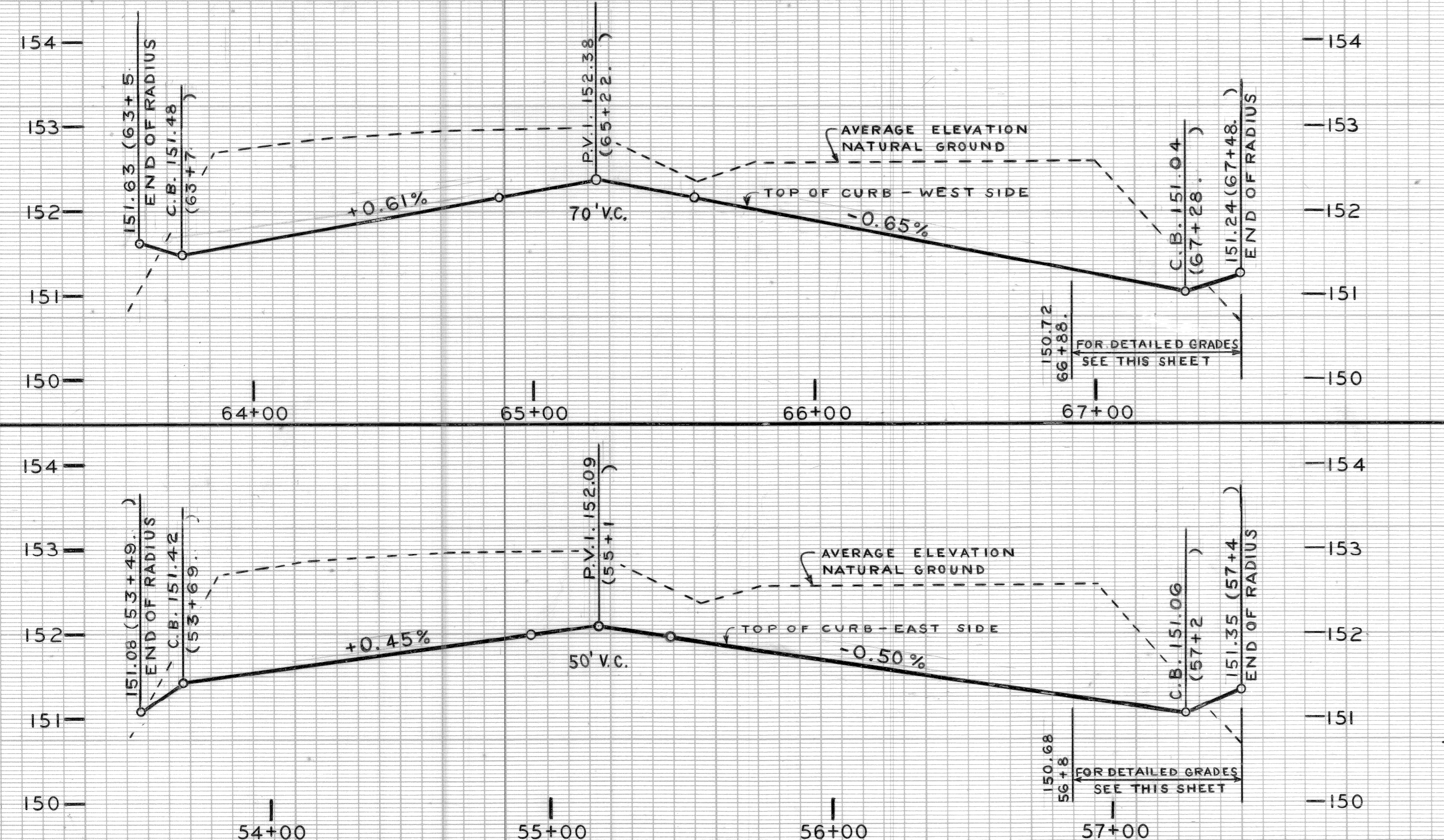
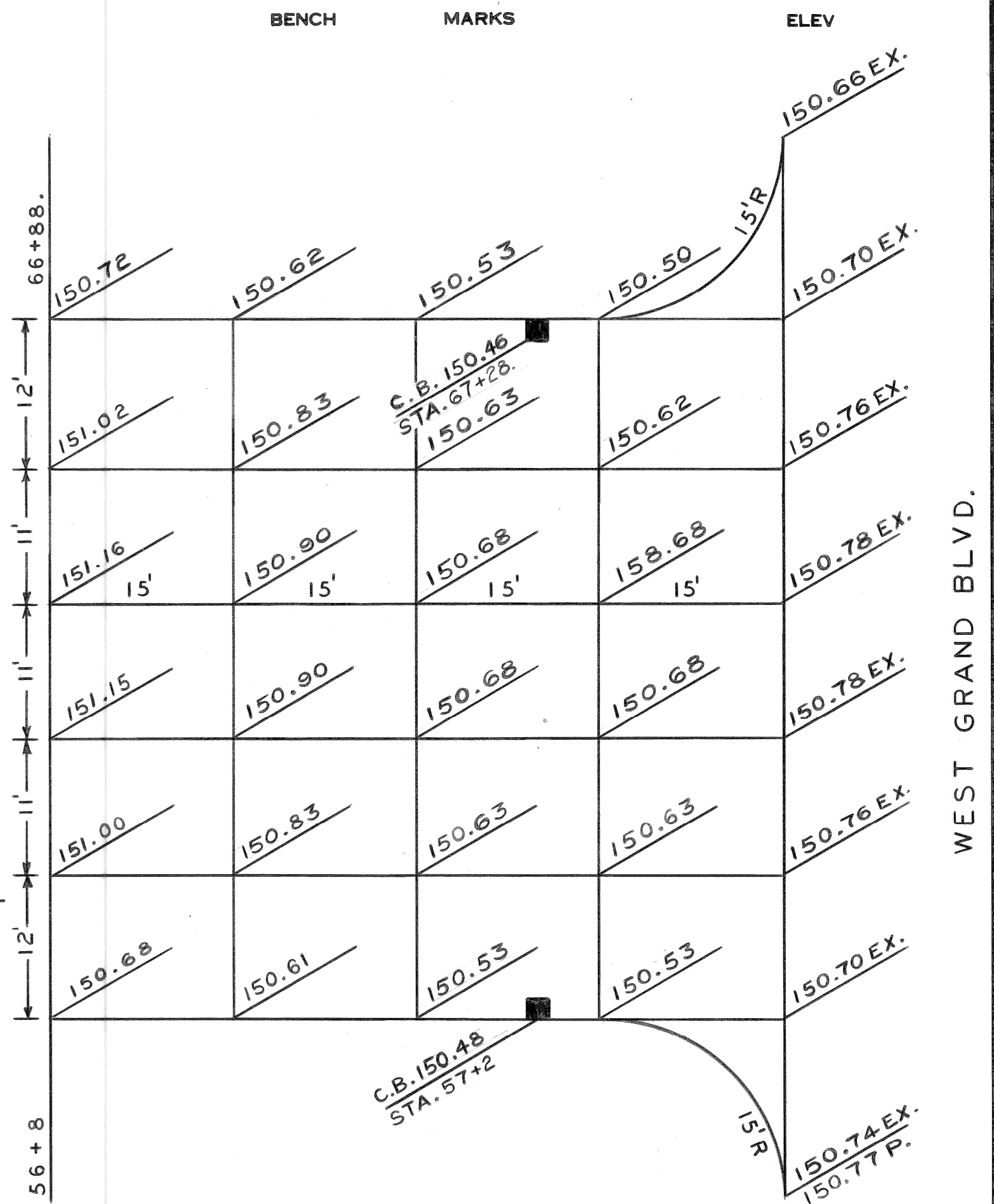
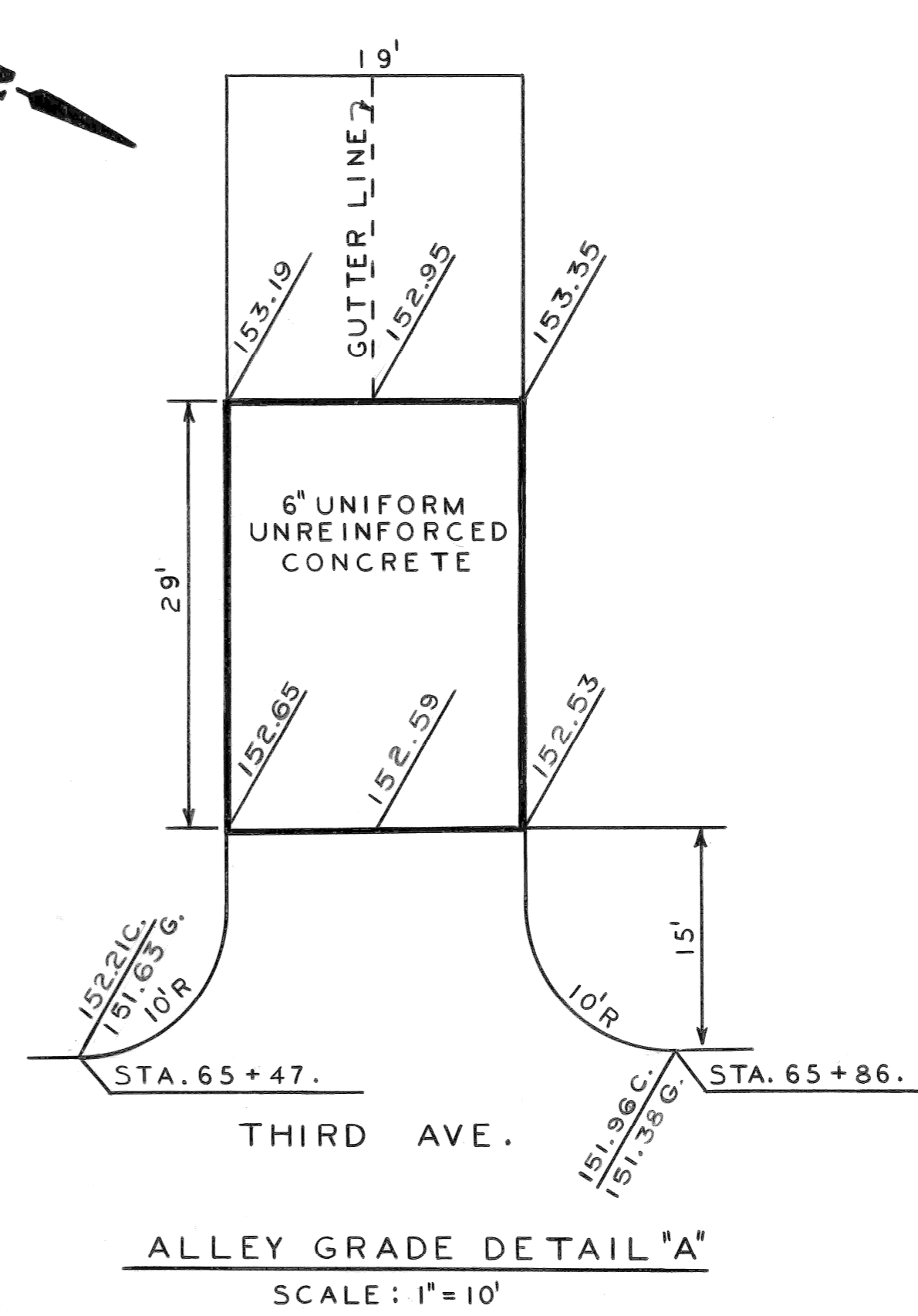
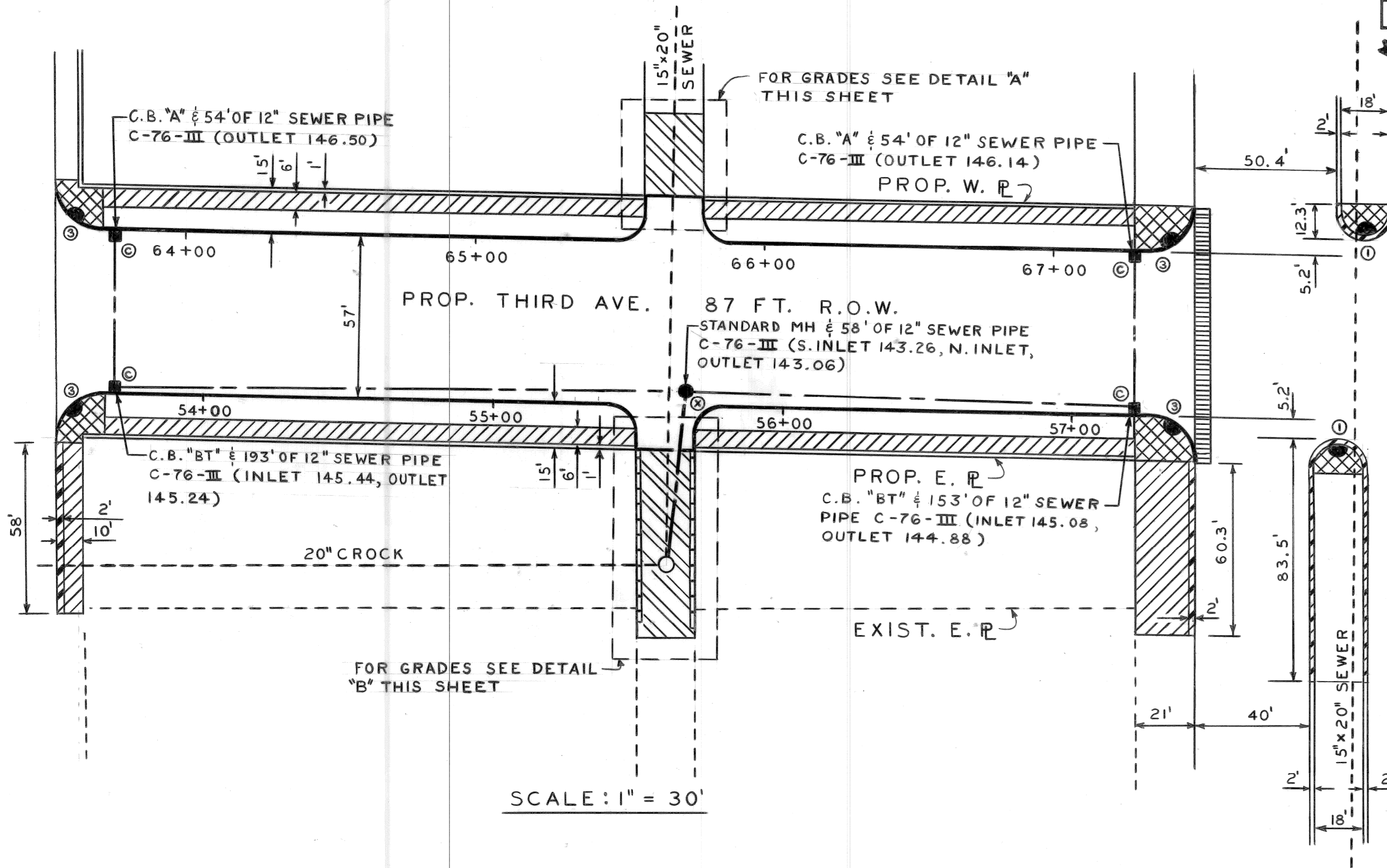
- 2" STANDARD SIDEWALK
- 4" STANDARD SIDEWALK
- 6" STANDARD SIDEWALK
- 9" UNIFORM REINFORCED CONCRETE BASE PAV'T. WITH REINFORCED INTEGRAL CURB
- 8" UNIFORM UNREINFORCED CONCRETE BASE PAV'T. WITH INTEGRAL CURB
- SEPERATE TYPE CURB
- 6" UNIFORM UNREINFORCED CONCRETE
- STRIP AND ADJUST
- (C) CONSTRUCT CATCH BASIN
- (S) CONSTRUCT SIDEWALK RAMP TYPE-3
- (X) CONSTRUCT MANHOLE
- (1) CONSTRUCT SIDEWALK RAMP TYPE-1

| BENCH | MARKS | ELEV |
|---------|---------------------------------|--------|
| CBM HYD | NW CORNER THIRD & BALTIMORE | 153.73 |
| CBM HYD | NW CORNER THIRD & MILWAUKEE | 154.15 |
| CBM HYD | 75' E OF THIRD S SIDE GD. BLVD. | 152.94 |
| CBM HYD | E OF THIRD IN ISLAND | 155.32 |

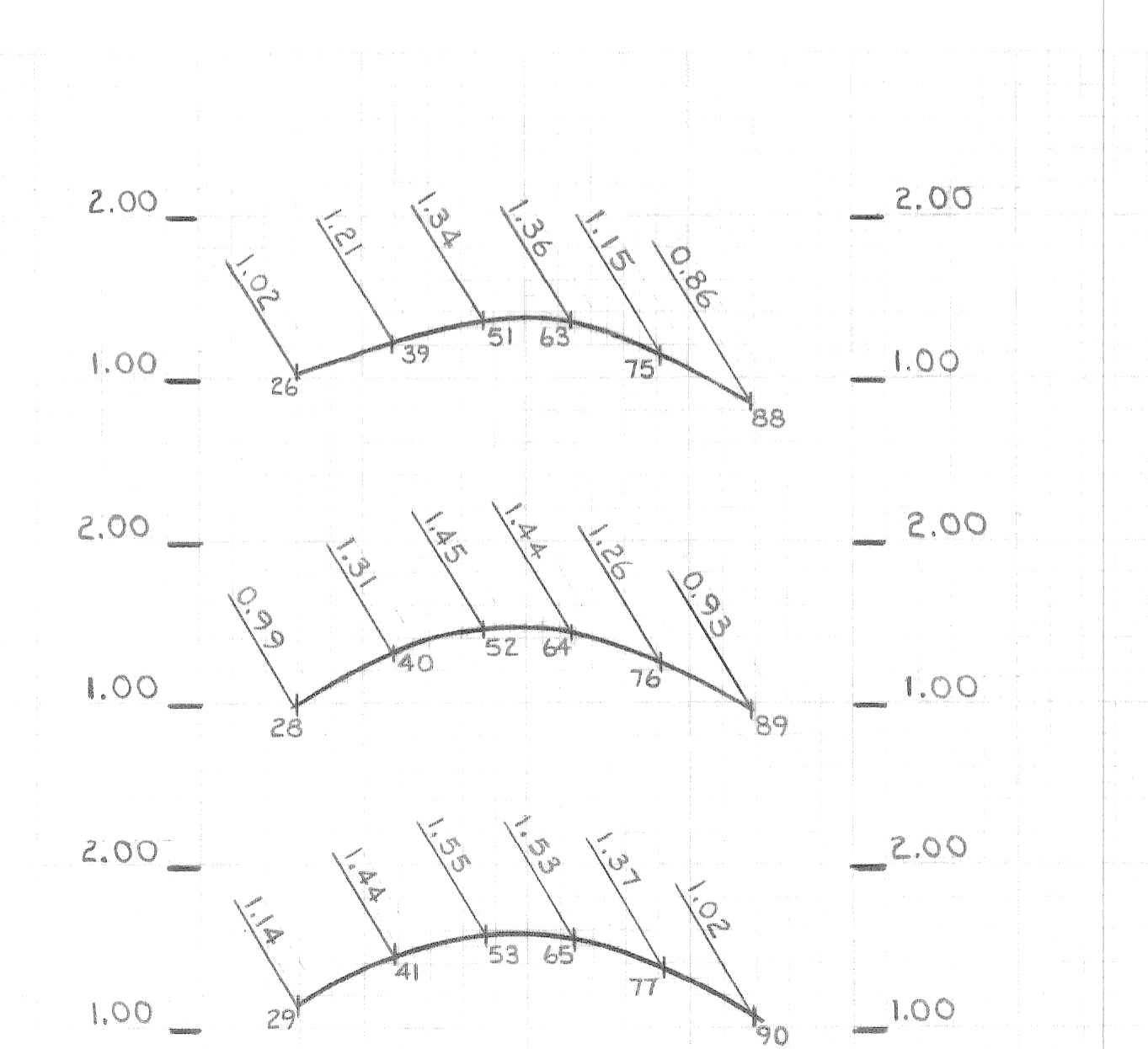
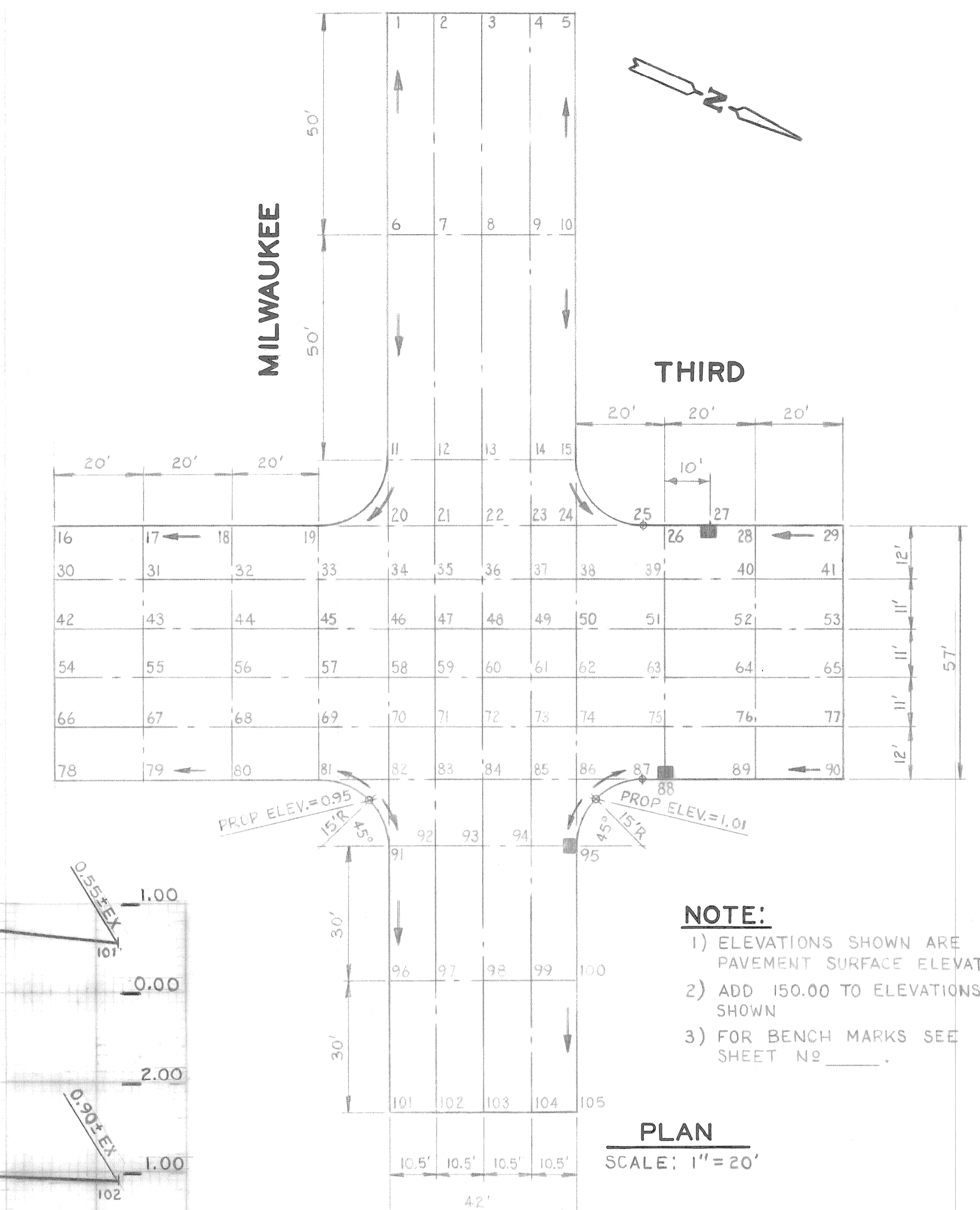
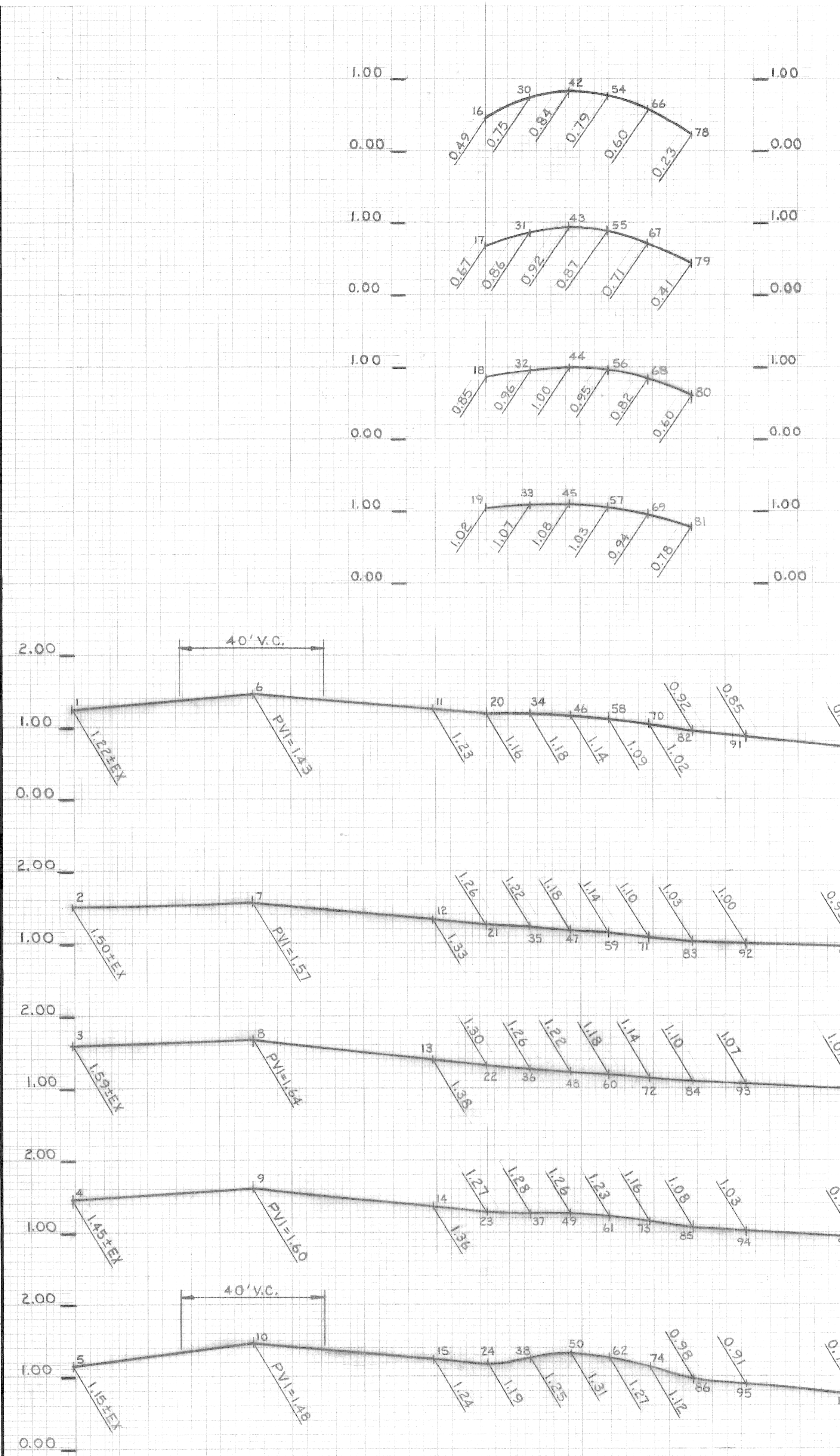
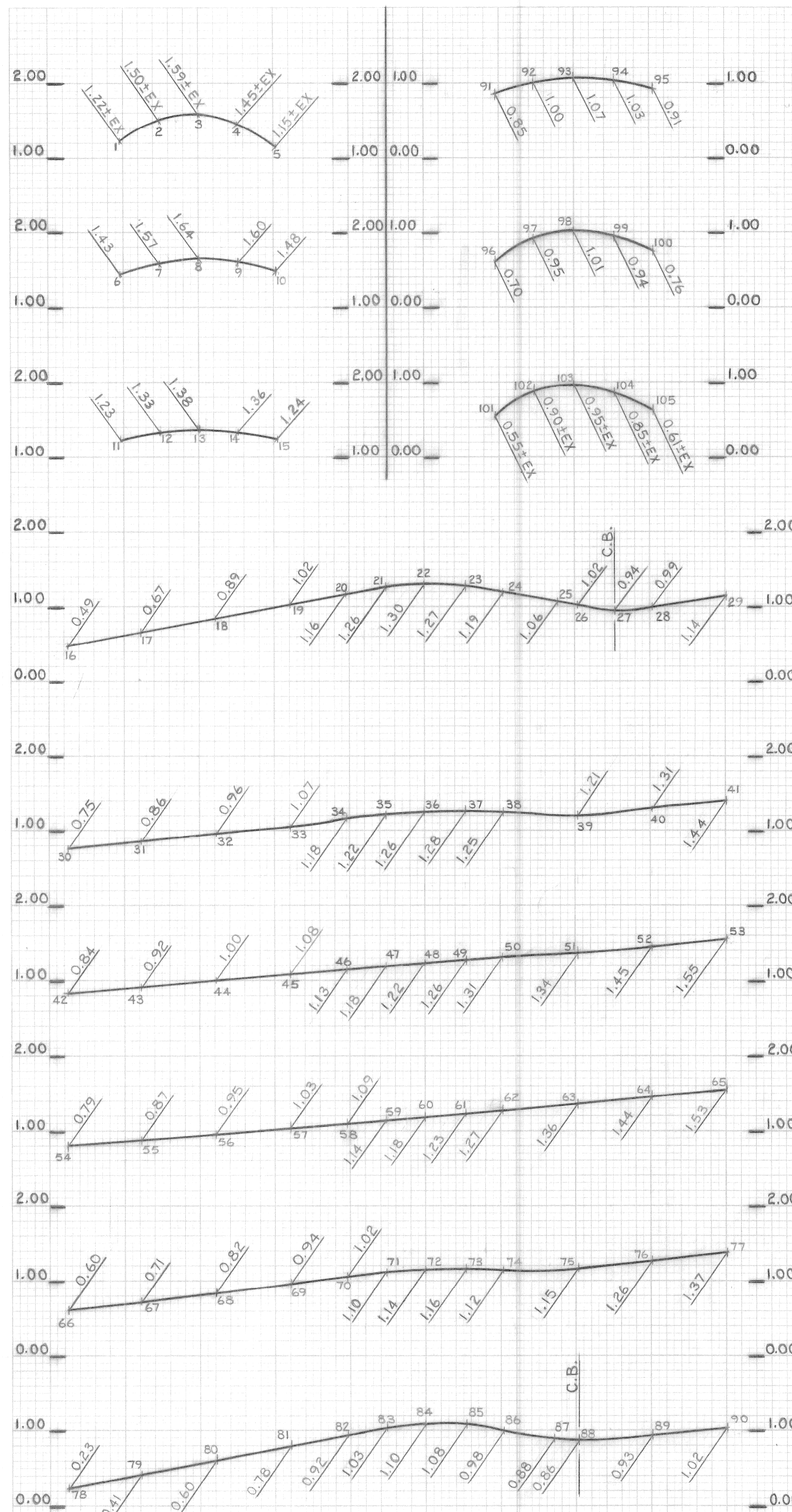


| | | | | |
|---|--|--|---|---|
| BY: ABrown CHECKED BY: APPROVED: | | CITY OF DETROIT CITY ENGINEERING DEPARTMENT BUREAUS OF STREETS AND HIGHWAYS FOR | RELOCATION AND WIDENING OF THIRD AVE. FROM BALTIMORE TO WEST GRAND BLVD. AND MISCELLANEOUS CONSTRUCTION PAVING PLAN | INDEX NO. SHEET <u>5</u> OF <u>11</u> SHEETS |
| PLAN GRADE ESTIMATE FINAL | | | | CONTRACT NO. ASSIGNMENT NO. DATE |

MILWAUKEE ST 60 FT. R.O.W.
ASPHALT ON CONCRETE



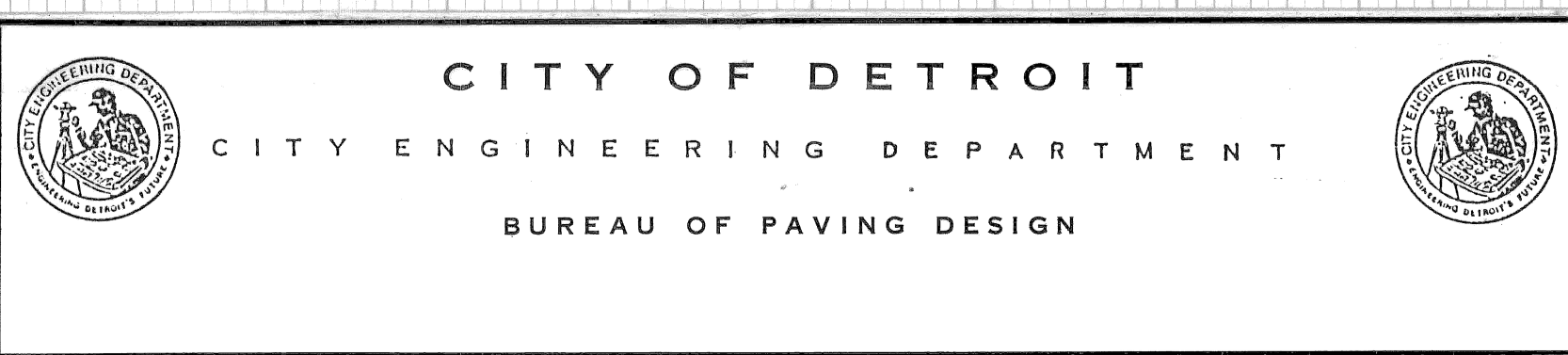
| | | | | | | | | | | | |
|--------------------------|--|----------------------------|--|----------------------------------|--|---|--|---|--|---|--|
| PLAN M. K. | | CHECKED BY M. K. | | APPROVED. ENGINEER OF STREETS | | CITY OF DETROIT CITY ENGINEERING DEPARTMENT BUREAU OF STREETS AND HIGHWAYS FOR | | RELOCATION AND WIDENING OF THIRD AVE. FROM BALTIMORE TO WEST GRAND BLVD. AND MISCELLANEOUS CONSTRUCTION PAVING PLAN | | SHEET 6 OF 11 SHEETS CONTRACT NO. ASSIGNMENT NO. 88-60-04 DATE | |
| DESCRIPTION REVISIONS | | DR. N. CK. D. AP. VO. DATE | | FINAL CHECK REVIEW | | INDEX NO. | | INDEXED | | INDEXED | |



| NO. | DESCRIPTION | DR'N | CK'D | AP'D | DATE |
|-----|-------------|------|------|------|------|
| | | | | | |
| | | | | | |
| | | | | | |

DESIGNED BY
 DRAWN BY **ABrown**
 CHECKED BY
 FINAL REVIEW

APPROVED:
 ENGINEER OF STREETS



RELOCATION AND WIDENING OF THIRD AVE FROM
 BALTIMORE TO WEST GRAND BLVD.
 AND
 MISCELLANEOUS CONSTRUCTION
 THIRD - MILWAUKEE INTERSECTION GRADE DETAILS

DETAIL STANDARD NO. 7 OF 11
 DRAWING NO.
 SCALE DATE