

NORTH

SCALE 1/16" = 1'-0"

PROPOSED SITE PLAN

MARINERS CHURCH · RENAISSANCE CENTER BRIDGE
DETROIT, MICHIGAN

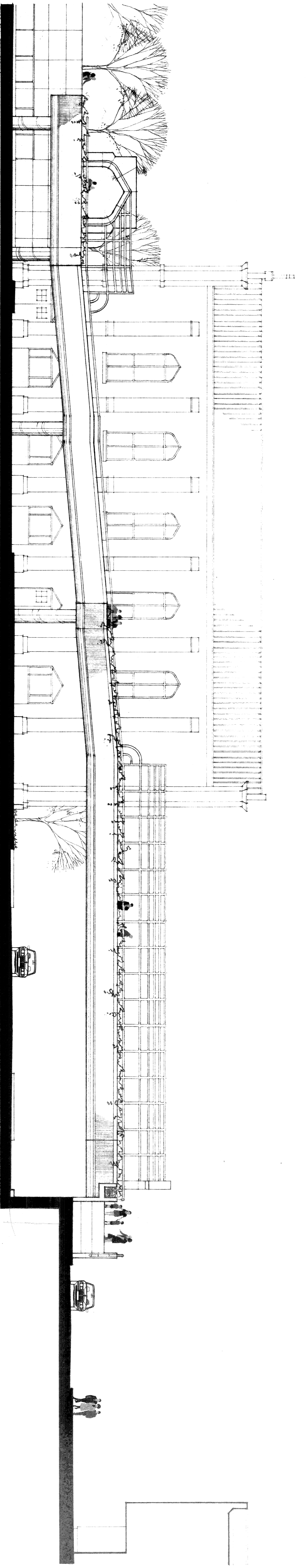
Subject
**Mariners Church/
Renaissance Center Bridge**

Project
**RENAISSANCE CENTER
REDEVELOPMENT**
Detroit, Michigan

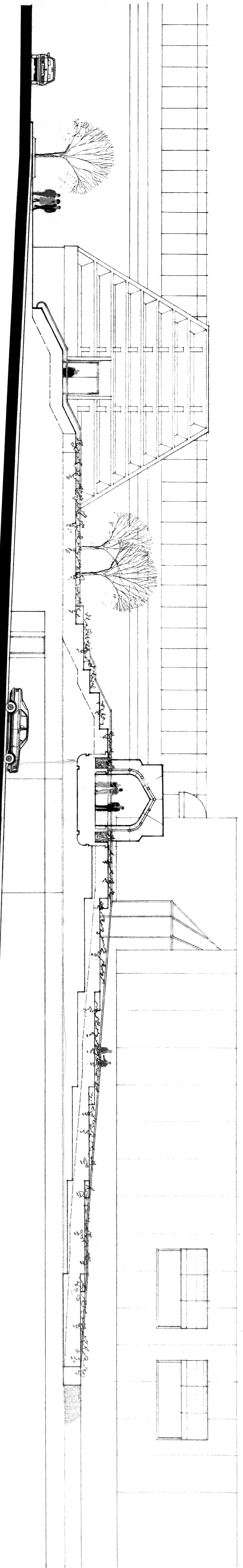
Project
**JAMES P. RYAN ASSOCIATES
ARCHITECTS & PLANNERS, P. C.**
25160 Lahser • Suite 200 • Southfield, Michigan 48034 • 313-354-0606

Job No.
84-439.3

Sheet No.
1

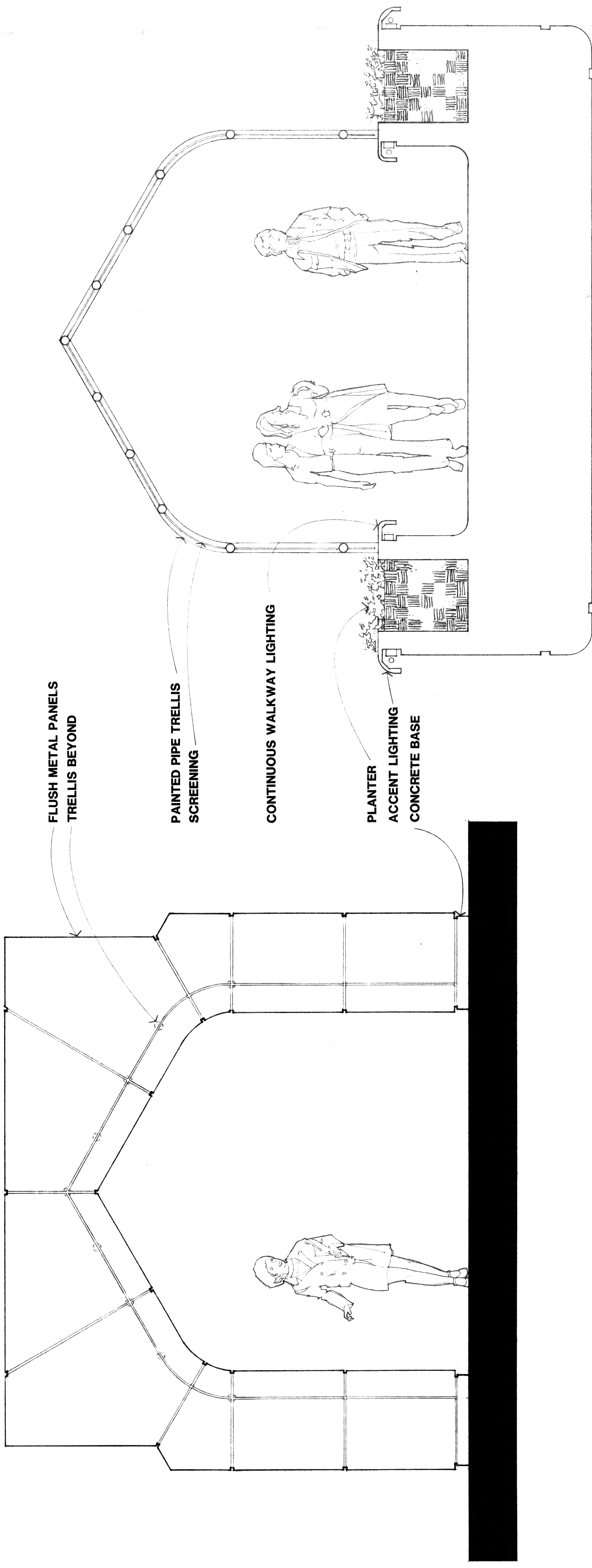


ELEVATION A Looking North
SCALE 1/8" = 1'-0"



ELEVATION B Looking East
SCALE 1/8" = 1'-0"

MARINERS CHURCH - RENAISSANCE CENTER BRIDGE
DETROIT, MICHIGAN



ENTRY PORTICO

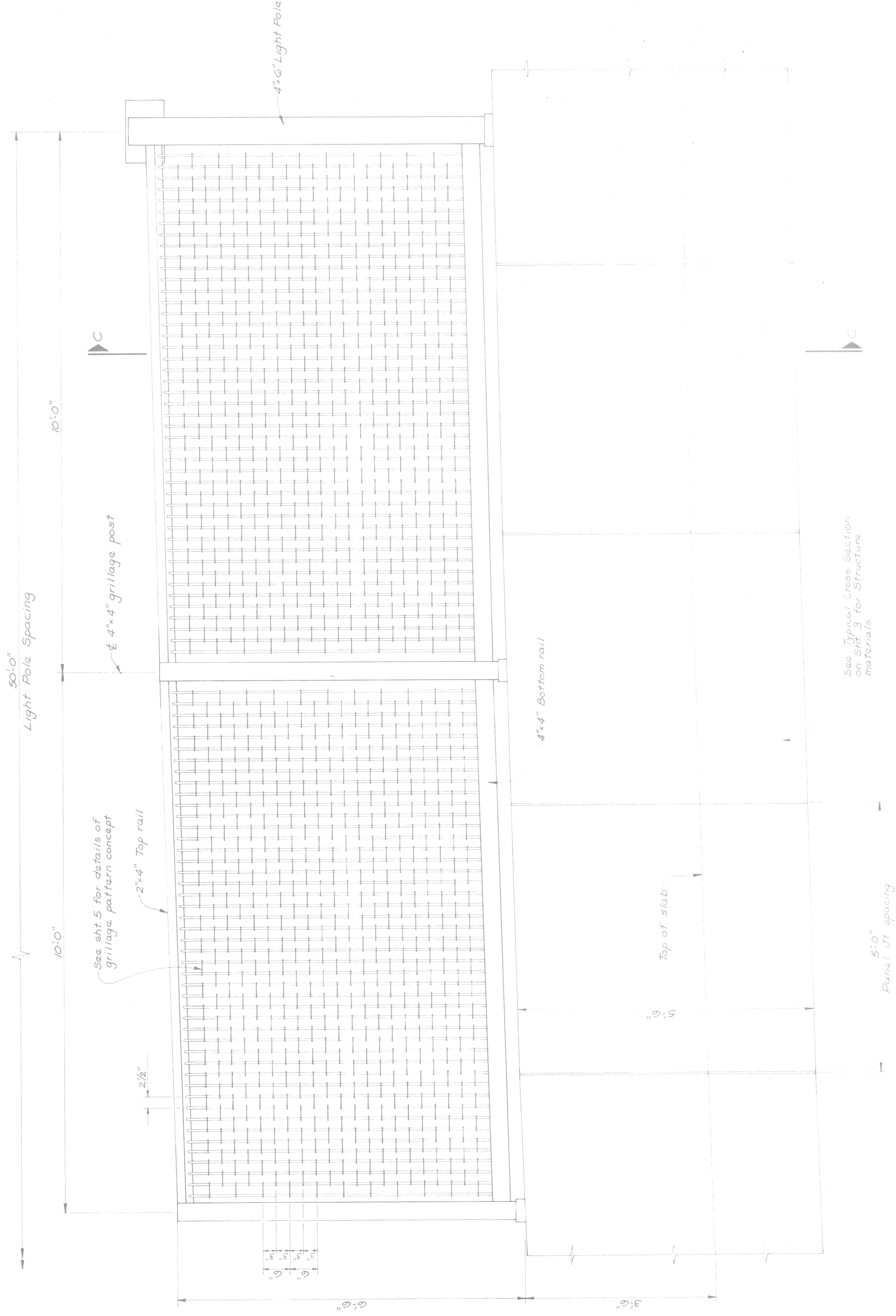
ELEVATION C

SCALE: 3/4" = 1'-0"

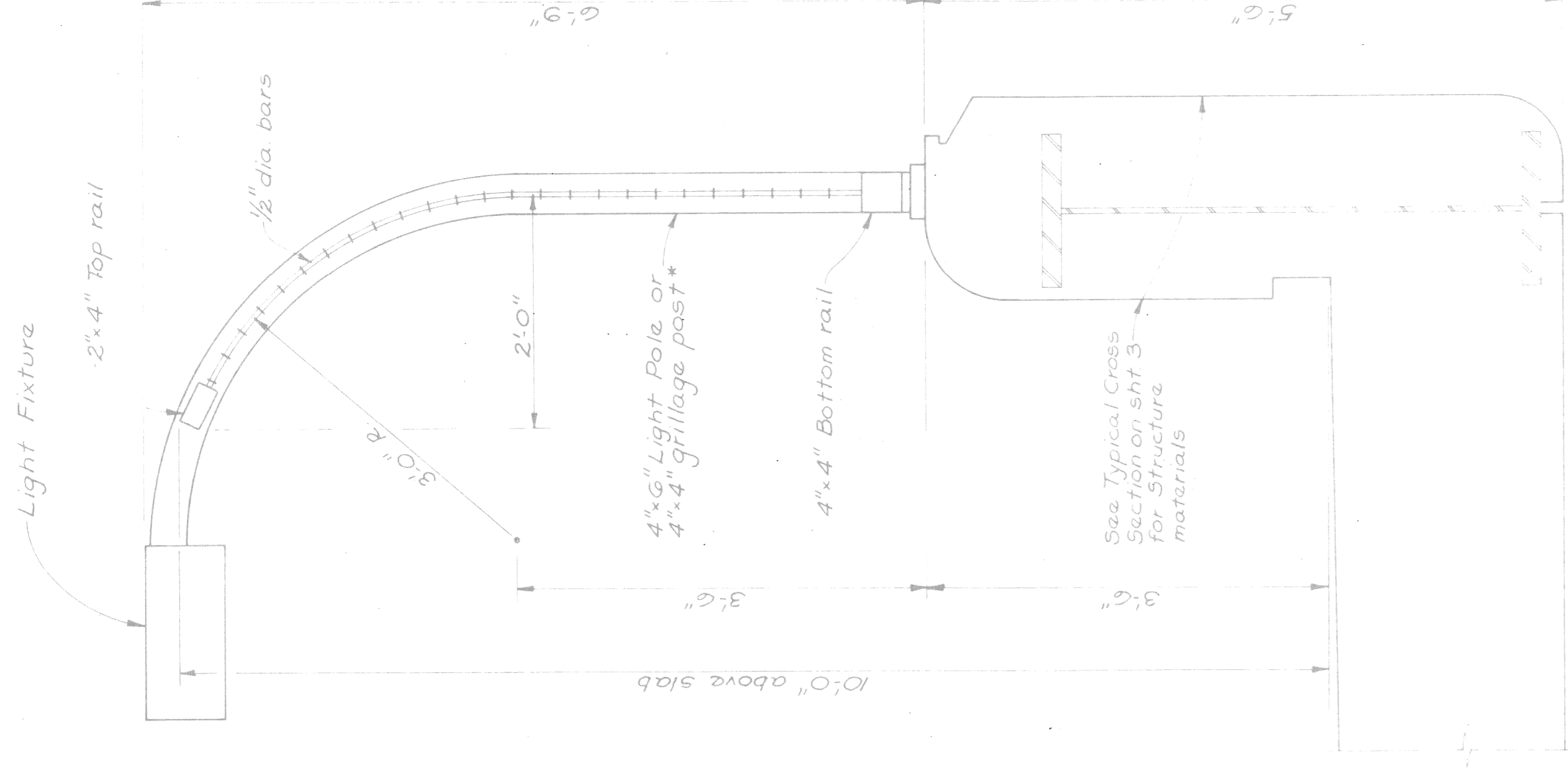
SECTION THRU PEDESTRIAN BRIDGE

SECTION D

SCALE: 3/4" = 1'-0"



TYPICAL PARTIAL ELEVATION
1" = 1'-0"



SECTION C-C
1" = 1'-0"

* Note: 4" x 4" grillage posts and at inside edge of 2" x 4" top rail
All grillage materials shall be stainless steel construction

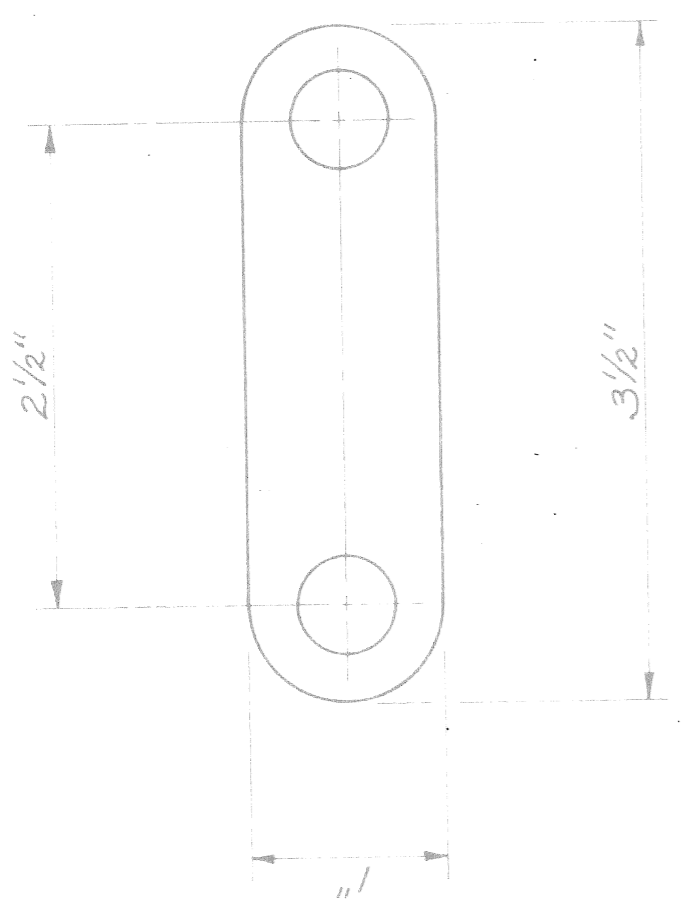
PRELIMINARY PLAN "A"

RANDOLPH STREET
PEDESTRIAN BRIDGE

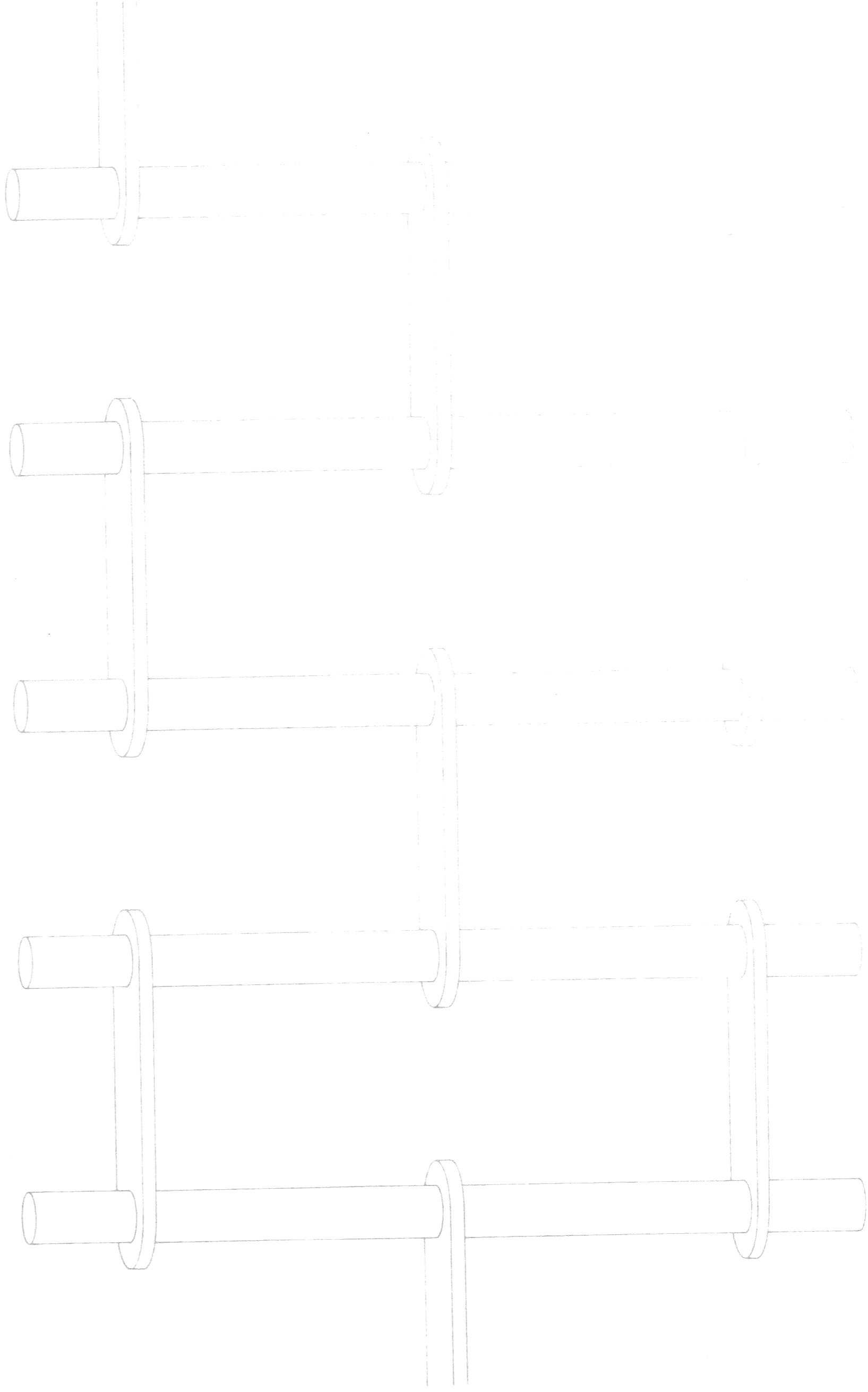
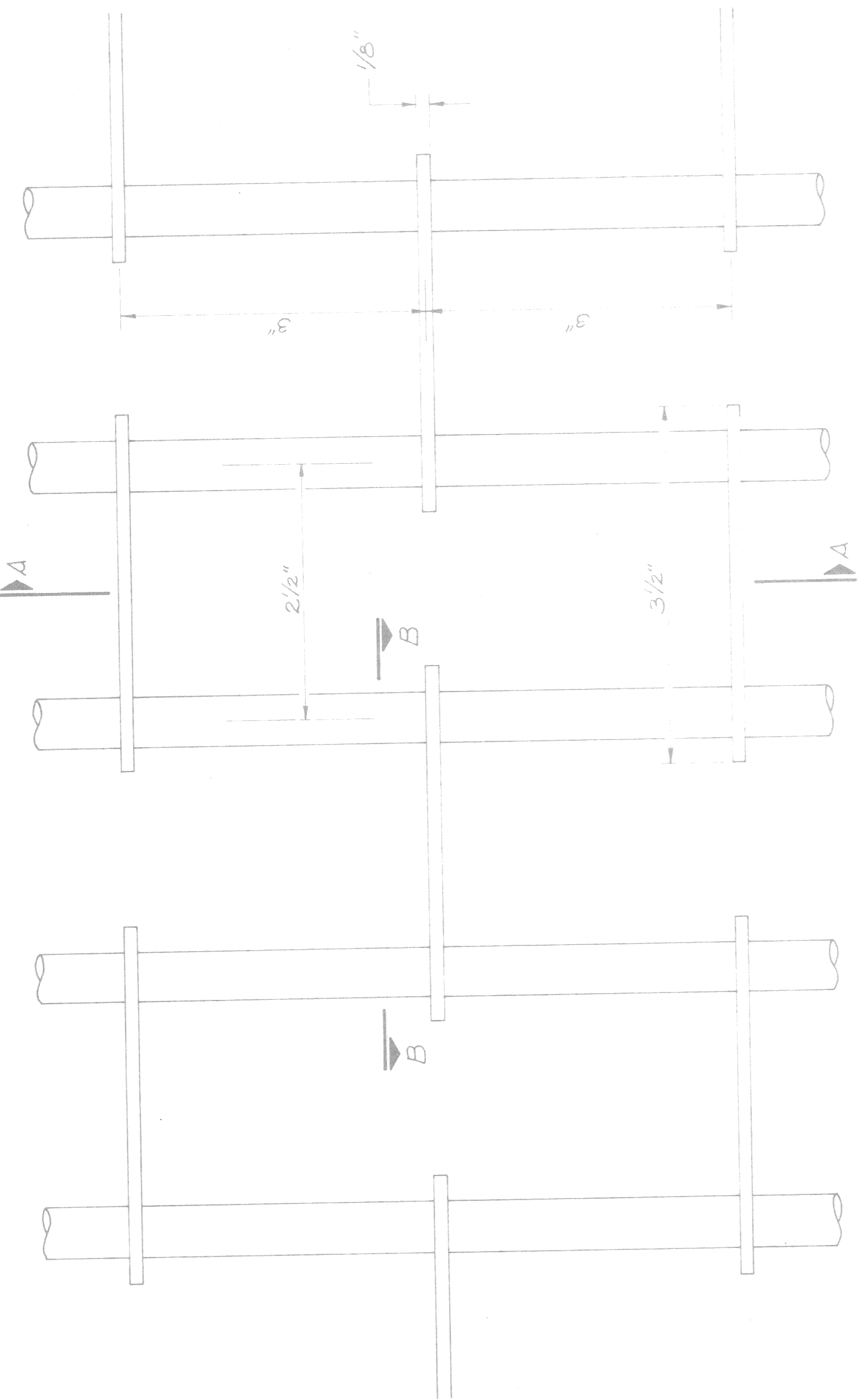
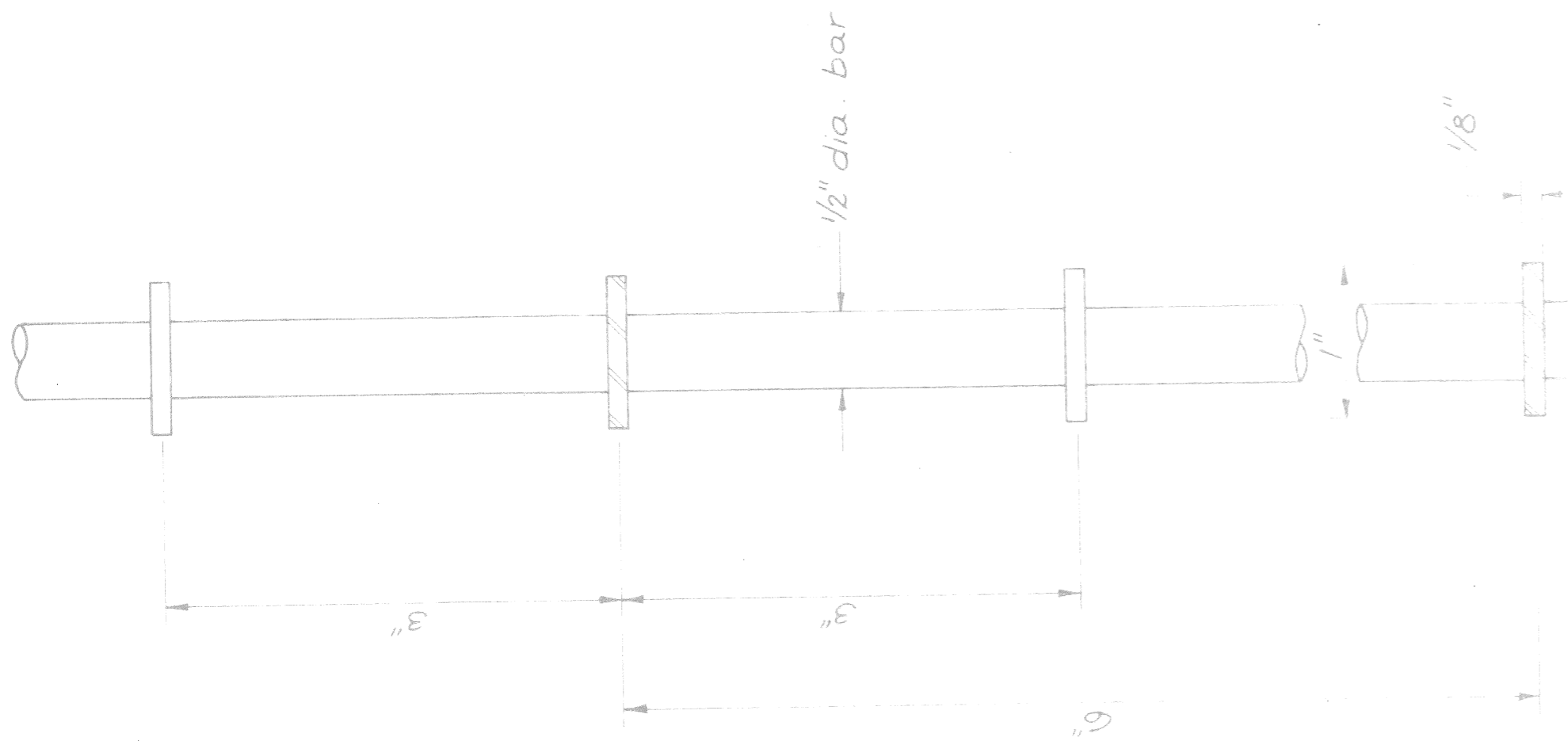
FENCING GRILLAGE DETAILS

Project MADISON MADISON INTERNATIONAL OF MICHIGAN
Engineers, Architects, Planners
1420 Washington Blvd.
Detroit, Michigan 48226

DESIGN BY D.L.M.
DRAWN BY K.C.H.
CHECKED BY D.L.M.
DATE OCT 1, 1997
PROJECT NO. 6612
SHEET NO. 4 OF 5



Section B-B



Elevation

