

Remove Asphalt Surface shown cross-hatched to provide for a smooth connection and to adjust Crown. Replace with Bituminous Concrete Pavement.

C.B.M. #13 Elev. 116.116 Arrow on Hydrant N.W. Corner of Randolph and Woodbridge

C.B.M. #14 Elev. 115.054 Arrow on Hydrant N.W. Corner of Brush and Woodbridge

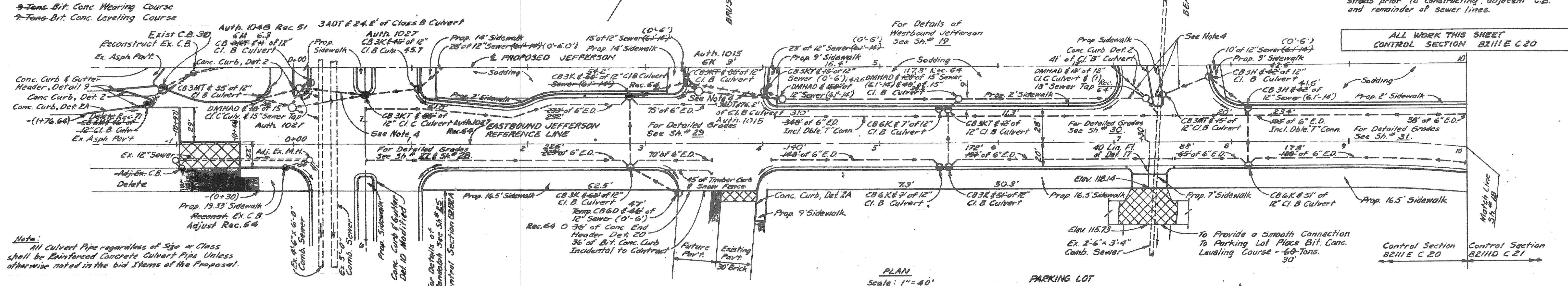
C.B.M. #11 Elev. 115.923 Arrow on Hydrant N.W. Corner of Beaubien and Woodbridge

B.P.F. DIV. NO.	STATE PROJECT	PROJ. NO.	FISCAL YEAR	SHEET NO.	TOTAL SHEETS
4	MICH.	0-400(82)		17	17
B.P.F. DIV. NO.	STATE PROJECT	PROJ. NO.	FISCAL YEAR	SHEET NO.	TOTAL SHEETS
4	MICH.	0-400(82)		17	17

E. JEFFERSON Randolph to Chrysler Fwy., I-375

(see Chrysler Fwy. for full set). #82211E-C20

Station	Remove Ex. Asphalt Surface Sq. Yds.	Replace with Bit. Conc. Pavement Sq. Yds.	Station	Conc. Curb Header Det. 9 Lin. Ft.
-1+00	125.5	125.5	-1+50	34.31
3+80	33.0	33.0	Totals Rec'd	34.31
Totals Rec'd	158.5	158.5		



- Notes:
1. For Alignment See Sh. # 10 & 11
 2. For Construction Sequence See Sh. # 13 & 16
 3. Existing Sidewalk to remain
 4. The Contractor shall construct sewers crossing streets prior to constructing adjacent C.B. and remainder of sewer lines.

ALL WORK THIS SHEET CONTROL SECTION 82111E C 20

PLAN Scale: 1"=40'

PARKING LOT

DATE	BY	OPERATION
		PRELIMINARY P.L.W. CHECKED
		FINAL DESIGN CHECKED
		FINAL P.L.W. CHECK
		QUANTITIES CHECKED
		SQUAD

DATE	BY	OPERATION
		PLANS PREPARED
		CITY OF LANSING
		DEPARTMENT OF
		ROADS
		DESIGNED BY
		ENGINEER
		PROJECT NO.
		DATE

DATE	BY	OPERATION
		PLAN CHECKED
		PROFILE PLOTTED
		PROFILES PLOTTED
		GRADES PLOTTED
		QUANTITIES
		INSTRUMENT

4/13
M. WIGLEY
A. RAWINS
R. J. FISH

Sta. (-)1+77 to Sta. 10+00

2847	2847
EARTH EXCAVATION AUTH. 1027 Rec. 63	11,659 Cu. Yds.
EARTH EXCAVATION SPECIAL 6322	7,589 Cu. Yds.
TOTAL EXCAVATION	19,248 Cu. Yds.
LOSSES	
Embankment +25%	
This Sheet	212
Select Yellow Clay Bl' Fill	
Removal Sh. # 15	4,194 Auth 1047
Drainage Sh. # 17	309.0
Drainage Sh. # 19	72.0
P.L.C.	488.0
Basement Backfill	
This Sheet	5108
Total Losses	6,775
6054	6054
WASTE	10121
SAND GRAVEL MATERIAL	2,345
TOP SOIL SURFACE	250
SUBBASE (Compacted in Place)	2471
SELECTED SUBBASE 24A	1285

EASTBOUND JEFFERSON
STA. (-) 1+77 TO 10+00

Remove Asphalt Surface shown cross-hatched to provide for a smooth connection and to adjust crown. Replace with Bituminous Concrete Pavement.

C.B.M. #5 Elev. 124.736 Arrow on hydrant N.E. Corner of St. Antoine and Larned

C.B.M. #9 Elev. 121.241 Arrow on hydrant N.W. Corner of Hastings and Woodbridge

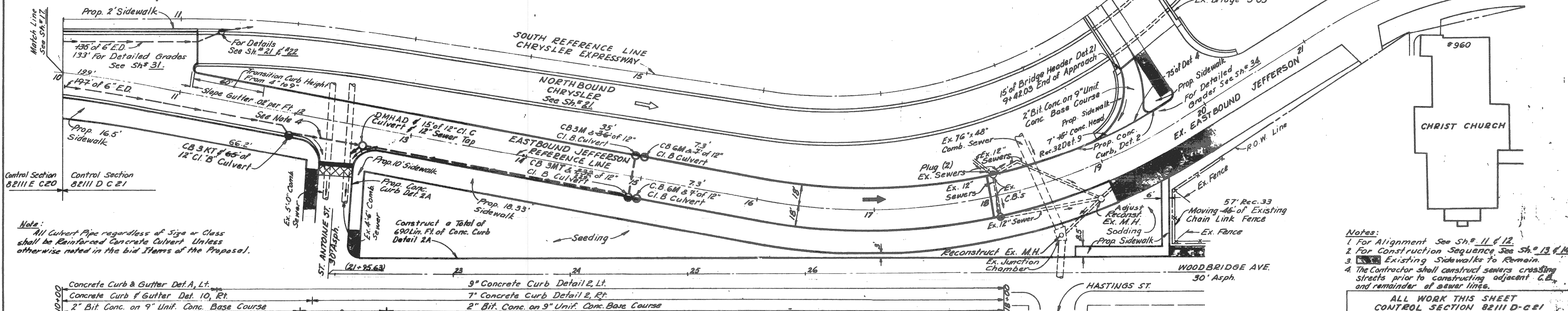
STATE	PROJECT	COUNTY	CITY	SHEET NO.	TOTAL SHEETS
MI	82111	Wayne	Detroit	18	

E. JEFFERSON Randolph to Chrysler Fwy., I-375 (see Chrysler Fwy. for full set). #82211E-C20

Station	Remove Exist. Asph. Surface Sq. Yds.	Replace with Bit. Conc. Pavement Sq. Yds.
12+40	33.36	33.36
Totals Rec'd	33.36	33.36

2 Tons Bit. Conc. Wearing Course
2 Tons Bit. Conc. Leveling Course

PLAN Scale: 1" = 40'

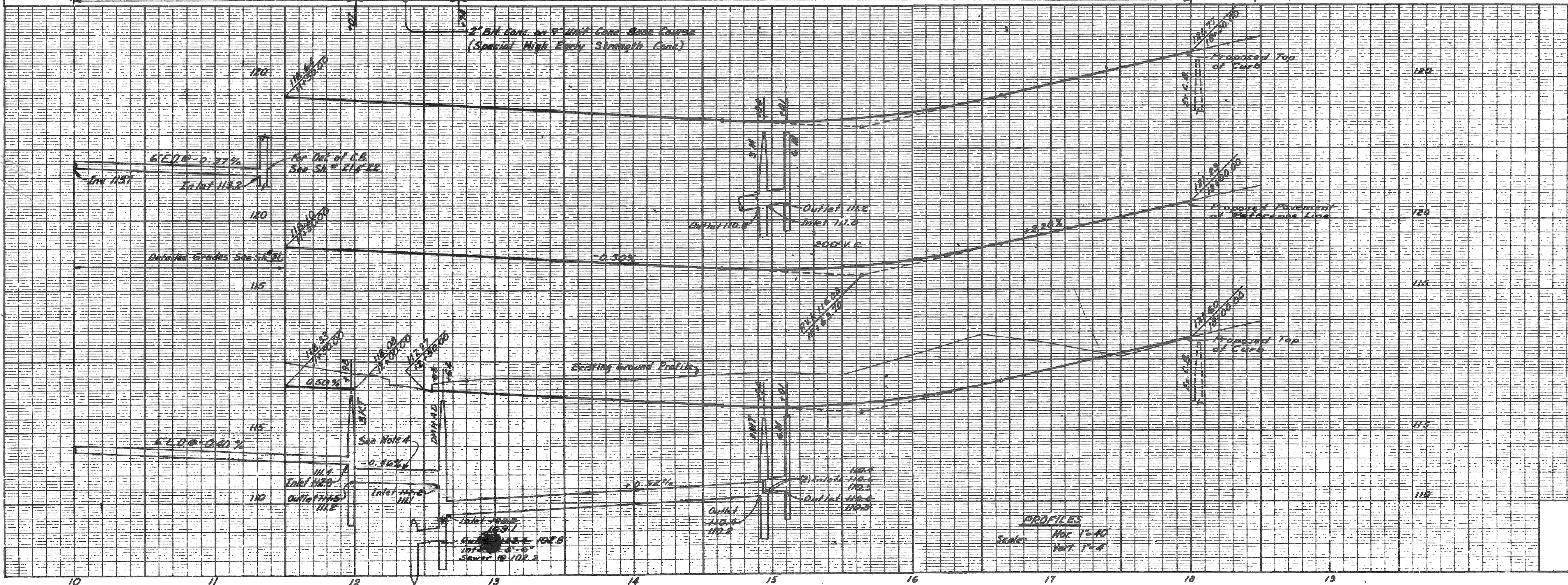


Note: All Culvert Pipe regardless of Size or Class shall be Reinforced Concrete Culvert Unless otherwise noted in the bid Plans of the Proposal.

Notes:
1. For Alignment See Sh. # 11 & 12.
2. For Construction Sequence See Sh. # 13 & 14.
3. Existing Sidewalks to Remain.
4. The Contractor shall construct sewers crossing streets prior to constructing adjacent C.B. and remainder of sewer line.

ALL WORK THIS SHEET CONTROL SECTION 82111 D-C-21

Sta. 10+00 to Sta. 18+78	
EARTH EXCAVATION	5861 Cu. Yds.
LOSSES	Auth. 1033 6369 Rec. 31
Embankment + 25%	
This Sheet	76
Removal Sh. # 16	5
Select Yellow Clay Bk. Fill	
Drainage Sh. # 20	1
Drainage Sh. # 22	49
Removal Sh. # 16	533.0
Total Losses	627.5
WASTE	627.5 Cu. Yds.
TOP SOIL SURFACE	2477 Cu. Yds.
SUBBASE (Compacted in Place)	Rec. 31 325
Sta. 10+00 to 11+11.55	378 Cu. Yds.
SELECTED SUBBASE 24A	Rec. 31 123
Sta. 10+00 to Sta. 11+11.55	126 Tons



EASTBOUND JEFFERSON
STA. 10+00 TO 22+50

OPERATION	DATE	BY
PRELIMINARY P.L.O.W. CHECKED		
FINAL DESIGN CHECKED		
FINAL P.L.O.W. CHECKED		
QUANTITIES CHECKED		
ISSUED		

Remove Asphalt Surface shown cross-hatched to provide for a smooth connection and to adjust crown. Replace with Bituminous Concrete Pavement.

C.B.M. #14 Elev. 124.087 Arrow on hydrant N.W. Corner of Jefferson and Randolph
F.B.M. #28-354A Elev. 120.898 City of Detroit Monument N.E. Corner of Jefferson and Brush.

C.B.M. #3 Elev. 123.296 Arrow on hydrant N.E. Corner of Brush and Larned

C.B.M. #4 Elev. 123.159 Arrow on hydrant N.E. Corner of Beaubien and Larned.

B.P.R. DIV. NO.	STATE	PROJ. NO.	FISCAL YEAR	SHEET NO.	TOTAL SHEETS
4	MICH.	1-404 (52)		19	
ROUTE	COUNTY	CITY		SHEET NO.	TOTAL SHEETS
B2111	Wayne	Detroit		19	

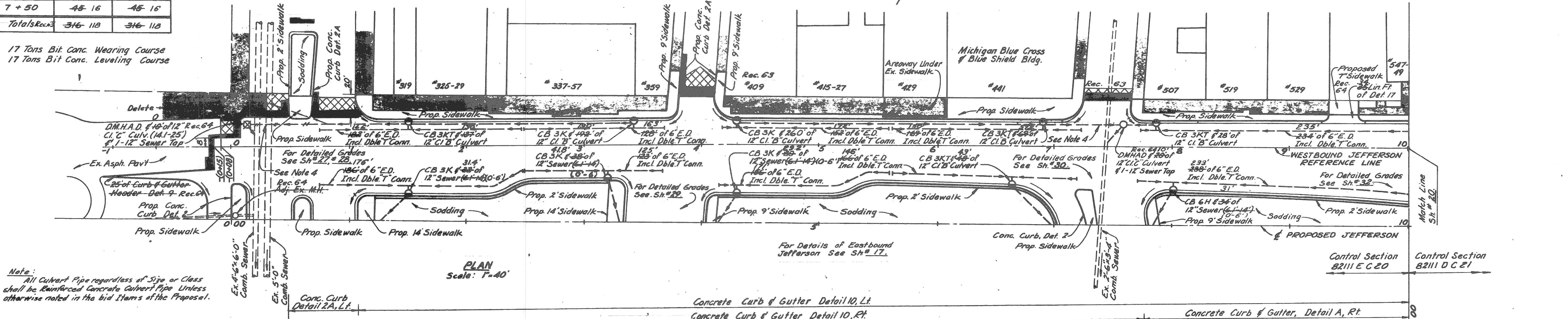
- Notes:
1. For Alignment See Sh. #10 & 11.
 2. For Construction Sequence See Sh. #13 & 14.
 3. Existing Sidewalk to remain.
 4. The Contractor shall construct sewers crossing streets prior to constructing adjacent C.B. and remainder of sewer lines.

ALL WORK THIS SHEET CONTROL SECTION B2111EC20

Station	Remove Ex. Asph. Surface Sq. Yds.	Replace with Bit. Conc. Pavement Sq. Yds.
0+60	204.72	204.72
3+95	67.30	67.30
7+50	45.16	45.16
Totals Rec'd	316.18	316.18

E. JEFFERSON Randolph to Chrysler Fwy., I-375 (see Chrysler Fwy. for full set). #8221-C20

17 Tons Bit. Conc. Wearing Course
17 Tons Bit. Conc. Leveling Course



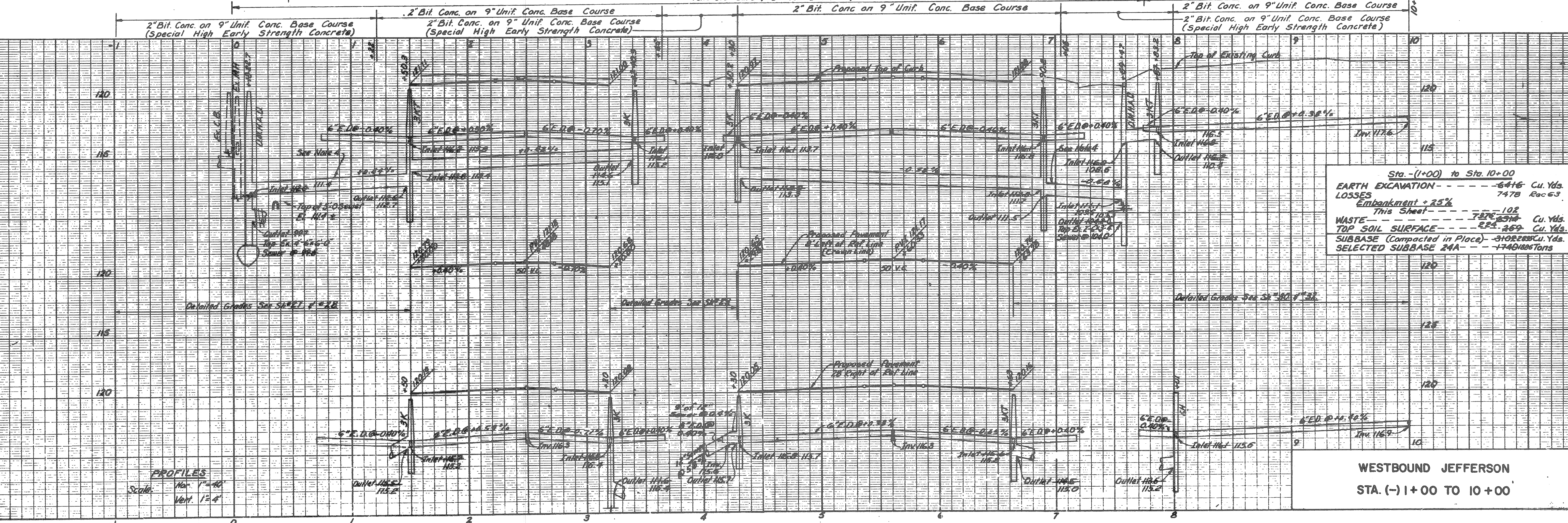
Note: All Culvert Pipe regardless of Size or Class shall be Reinforced Concrete Culvert Pipe Unless otherwise noted in the bid items of the Proposal.

PLAN Scale: 1"=40'

Concrete Curb & Gutter Detail 10, Lt.

Concrete Curb & Gutter Detail 10, Rt.

Concrete Curb & Gutter, Detail A, Rt.



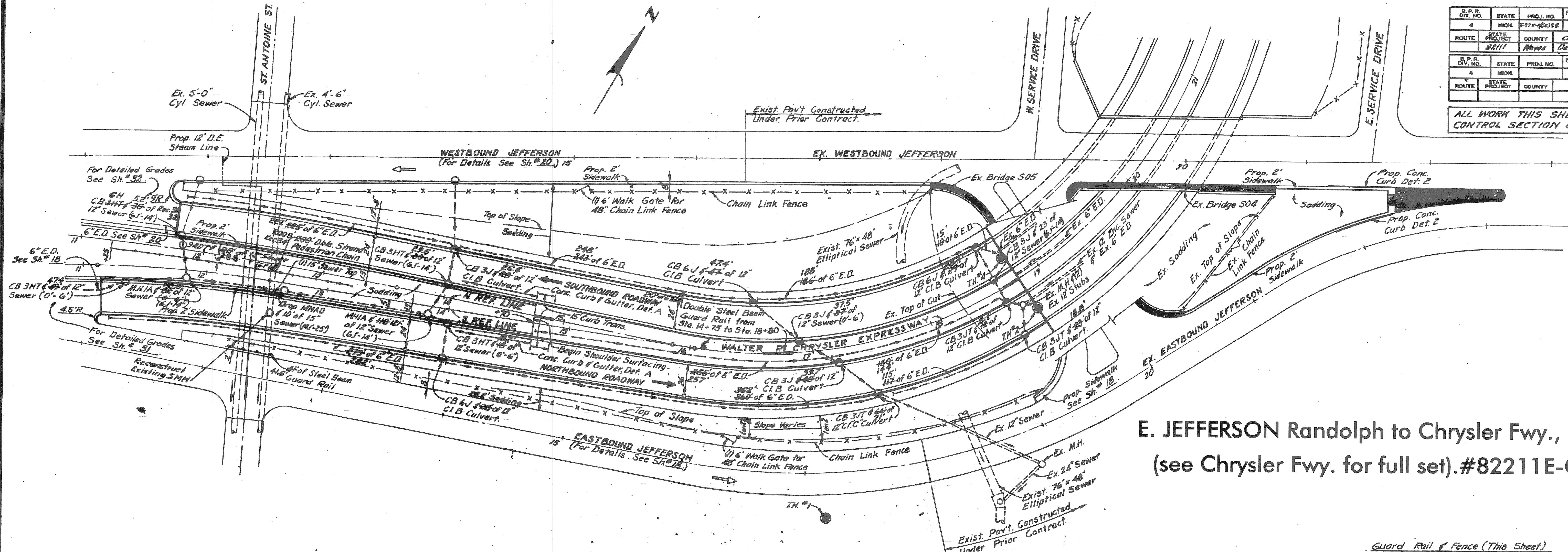
PROFILES Scale: Hor. 1"=40' Vert. 1"=4'

WESTBOUND JEFFERSON STA. (-) 1+00 TO 10+00

DATE: 4/63
BY: [Signature]
OPERATION: [Checked]
SURVEYED: [Checked]
PLAN PLOTTED: [Checked]
PROFILE PLOTTED: [Checked]
PROFILE CHECKED: [Checked]
PROF. PRIMARY GRADE: [Checked]
PROF. FINISHED GRADE: [Checked]
QUANTITIES CHECKED: [Checked]
SOAD: [Checked]

S.P.R. DIV. NO.	STATE	PROJ. NO.	FISCAL YEAR	SHEET NO.	TOTAL SHEETS
4	MICH.	82111	1958	21	21
ROUTE	PROJECT	COUNTY	CITY	SHEET NO.	TOTAL SHEETS
82111	Wayne	Wayne	Detroit	21	21

ALL WORK THIS SHEET CONTROL SECTION 82111D-C21



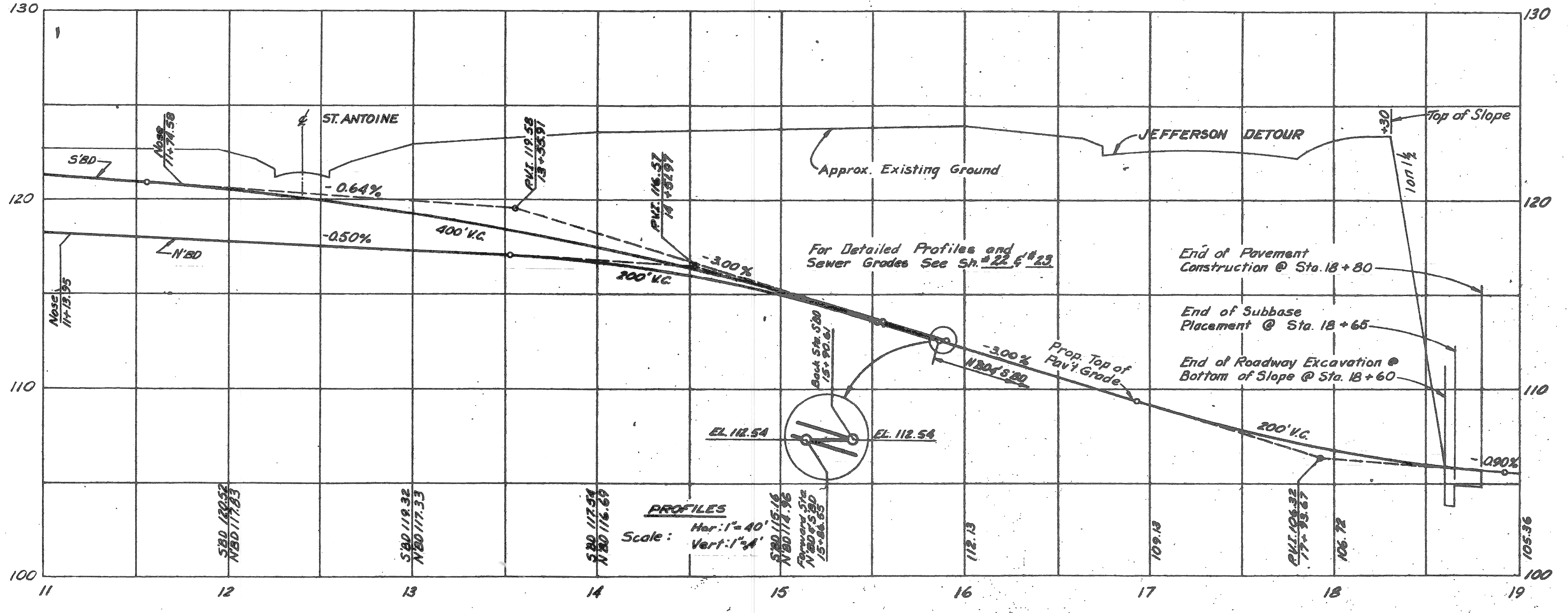
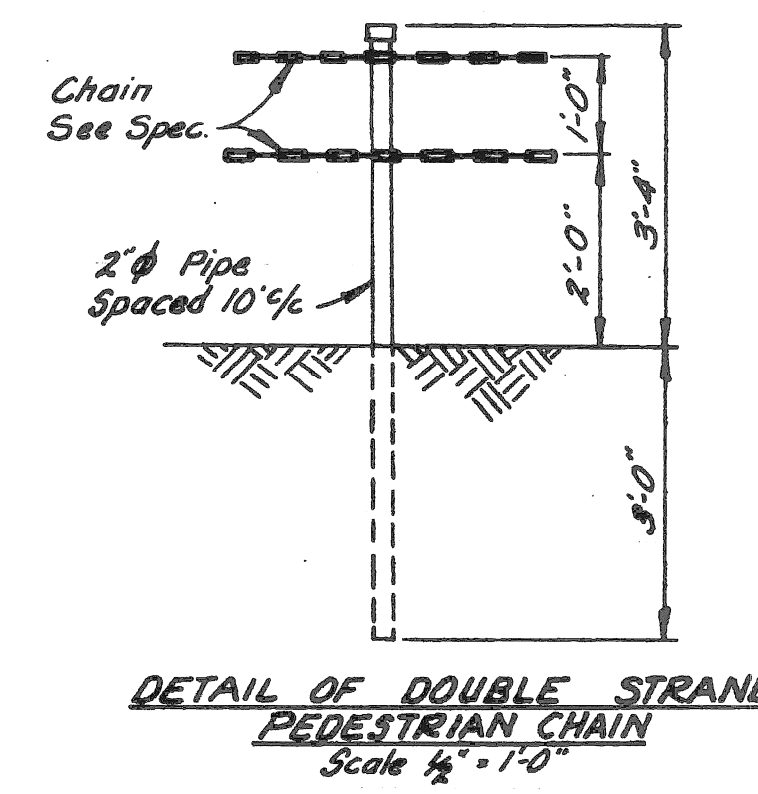
PLAN
Scale: 1"=40'

E. JEFFERSON Randolph to Chrysler Fwy., I-375
(see Chrysler Fwy. for full set).#82211E-C20

Guard Rail & Fence (This Sheet)

Steel Beam Guard Rail	Rec. 33	41.6'	Lin. Ft.
Double Steel Beam Guard Rail	Rec. 33	408.7-405	Lin. Ft.
48" Chain Link Fence	Rec. 34	1239	Lin. Ft.
6" Walk Gates for 48" Chain Link Fence		2	Each.

- Notes:
- 1 For Alignment See Sh. 11 of # 12
 - 2 For Index of Soil Borings (Symbol ●) See Sh. 8
 - 3 Existing Sidewalk to Remain
 - 4 For Construction Sequence See Sh. 13 of # 12
- All Culvert Pipe Regardless of Size or Class shall be Reinforced Concrete Culvert Pipe Unless otherwise noted in the bid items of the Proposal



PROFILES
Scale: Hor. 1"=40'
Vert. 1"=4'

WALTER P CHRYSLER EXPRESSWAY ITEMS
STA. 11 + 13.95 TO STA. 18 + 80

PLANS PREPARED BY
CITY OF DETROIT
DEPARTMENT OF PUBLIC WORKS
CITY ENGINEERS OFFICE
BUREAU OF HIGHWAYS AND EXPRESSWAYS

DATE: 11/15/58
DRAWN BY: W. L. LORNER
CHECKED BY: W. L. LORNER
DESIGNED BY: W. L. LORNER
APPROVED BY: W. L. LORNER
FOR APPROVAL: W. L. LORNER