

IN GENERAL, INSTALL W 20-1, 48" X 48", 3/4" TYPE B "CONSTRUCTION AHEAD" SIGNS ABOUT 350' FROM THE SITE IN ALL DIRECTIONS OF ONCOMING TRAFFIC OR AS DIRECTED BY THE ENGINEER.
 REVERSE PROCEDURE FOR THE OPPOSITE DIRECTION.

PLANS PREPARED BY
 CITY OF DETROIT
 DEPARTMENT OF PUBLIC WORKS
 CITY ENGINEERS OFFICE

APPROVED: *T. E. M. [Signature]*
 STRUCTURAL ENGINEER

JOB No.
 79-22-26 K

MICHIGAN DEPARTMENT OF TRANSPORTATION
 TRUMBULL OVER I-75
 CONSTRUCTION SIGNING

REVISIONS			
NO.	DESCRIPTION	DATE	BY

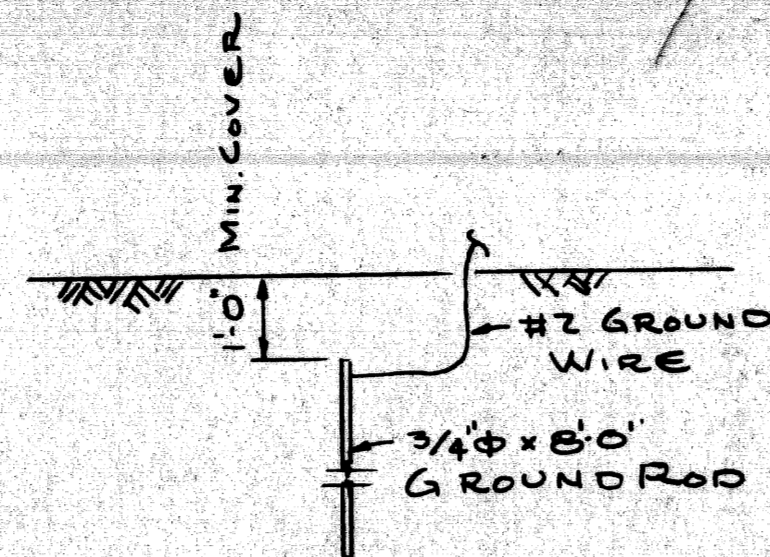
SQUAD BOSS	<i>[Signature]</i>	3-20-81
DRAWN BY	<i>[Signature]</i>	3-19-81
CHECKED BY	<i>[Signature]</i>	3-19-81
SHEET OF		

S 05 OF 82195

QUANTITIES		
ITEM	UNIT	AMOUNT
PEDESTRIAN FENCING, STRUCTURES	S.F.	5922
ELECTRICAL GROUNDING SYSTEM	EA	2

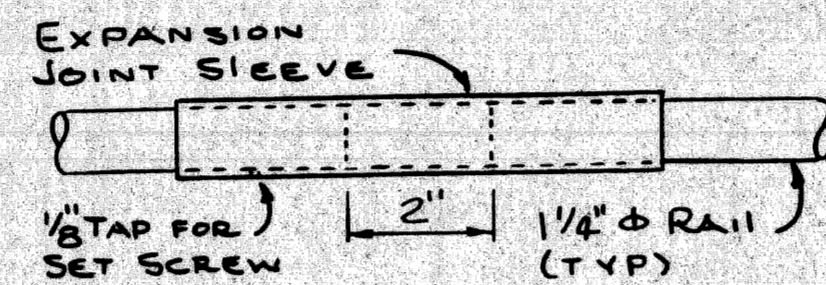
FENCING NOTES

- All work shall conform to MDOT STANDARD SPECIFICATIONS FOR CONSTRUCTION, 1979 EDITION
- All fence fabric shall be galvanized, #9 gage with a 2" mesh and with knuckling at the bottom selvage.
- The posts shall be 2 1/4" x 2" galvanized H-Posts weighing 4.1 PLF. Round posts having a 2 3/8" O.D. weighing 5.79 PLF. galvanized may be used with similar connection details.
- The nominal 1 1/4" phi braces shall be 1 5/8" phi O.D. steel pipe or tubing weighing 2.27 PLF galvanized.
- All posts and tubing shall be furnished with the manufacturer's standard connections and its minimum weight shall be within 5% of that specified.
- Posts and tubing shall be bent in the shop as shown on the plans.
- All components are to be galvanized. Bolts, nuts and washers are to be galvanized in accordance with ASTM A 153.
- Tension bars shall be 3/4" x 1/4" galvanized steel.
- Contractor shall verify field conditions before fabrication.
- Care is to be taken in placing expansion bolts and brackets so as to insure that the brackets hold the posts firmly against concrete. Shim if necessary.
- PEDESTRIAN FENCING-STRUCTURES shall include the fabric, posts, braces, expansion bolts, brackets and all suitable connections and fittings.
- 1/2" phi expansion bolts shall be Phillips red head galvanized wedge anchors WS 1242 G or approved equal.

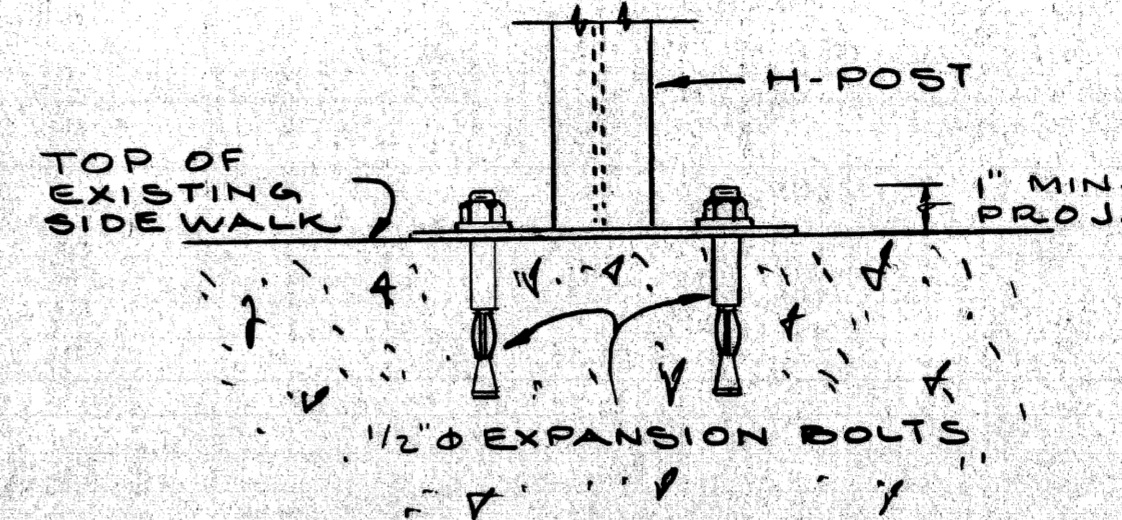
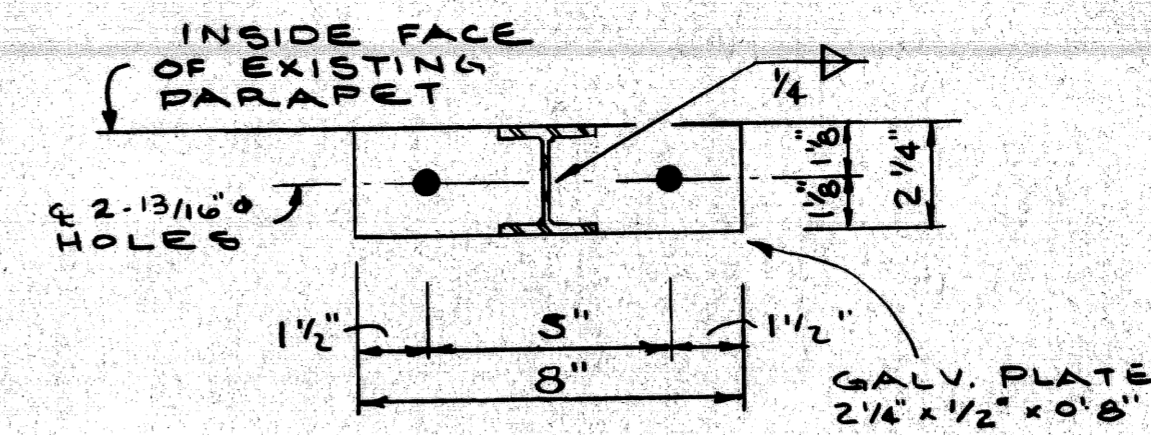


- All underground connections shall be caloweld thermite weld, gas or arc weld.
- Exposed connections may be split bolt or clamp type.
- Ground wire shall be #2 AWG stranded soft drawn copper wire.
- Resistance to ground for any continuous section of fence shall not exceed 25 ohms per ground rod.

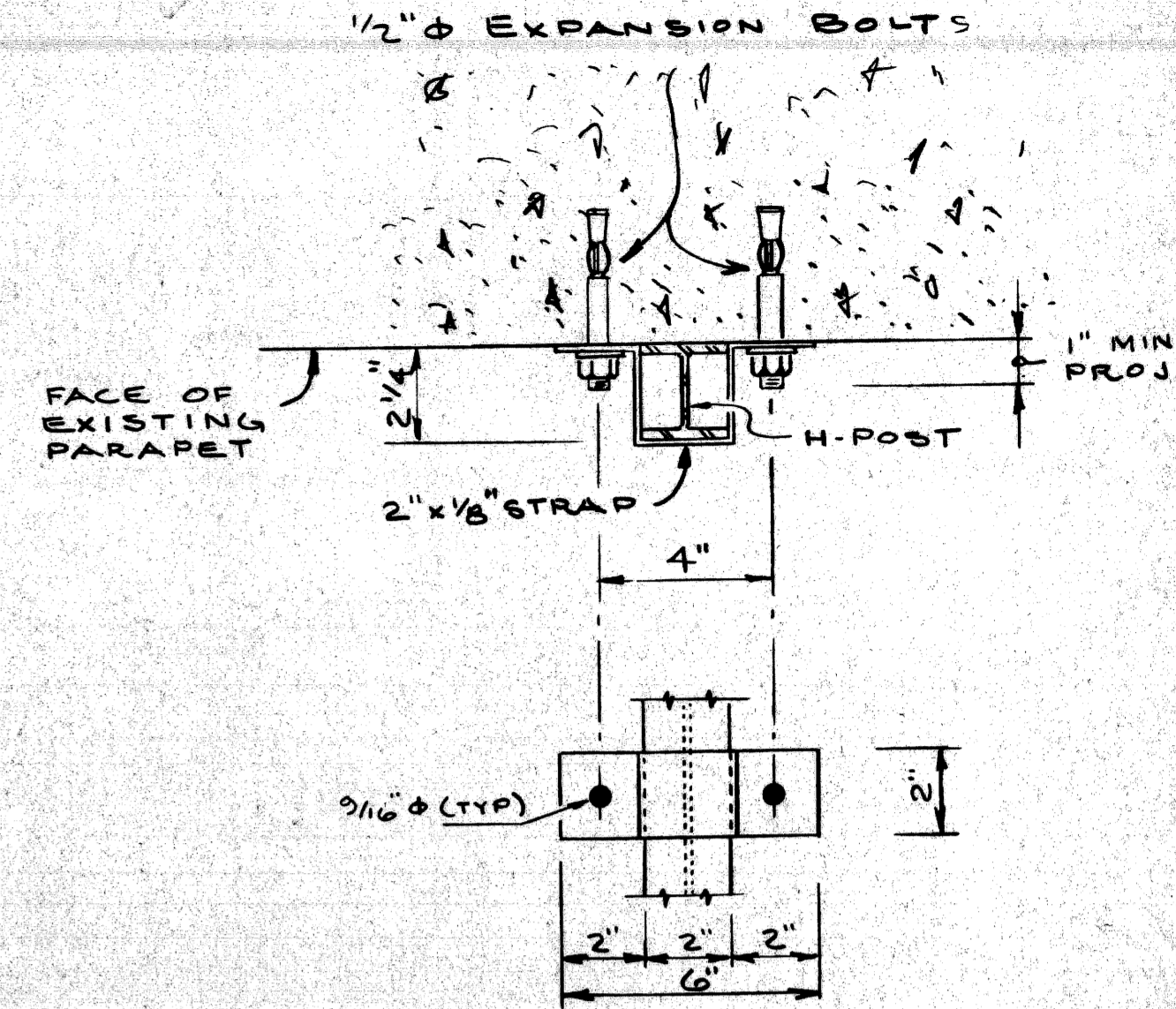
GROUNDING DETAIL



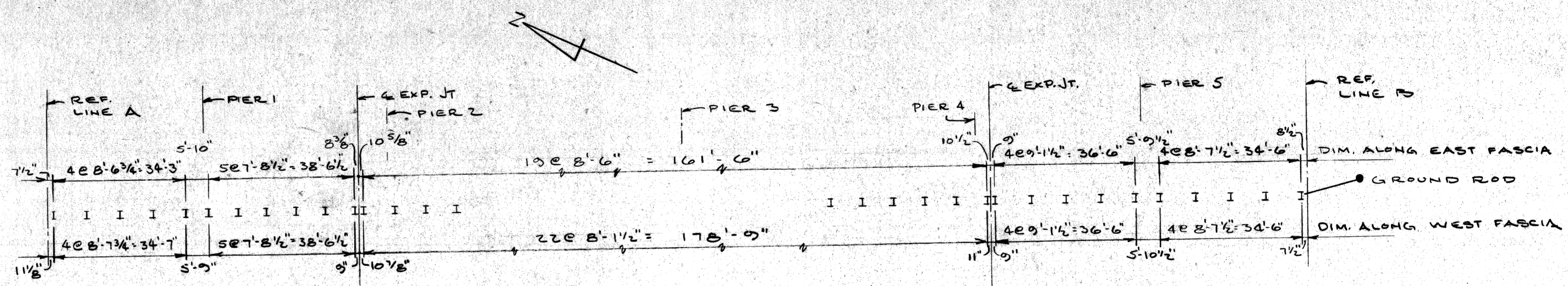
EXPANSION SLEEVE DETAIL



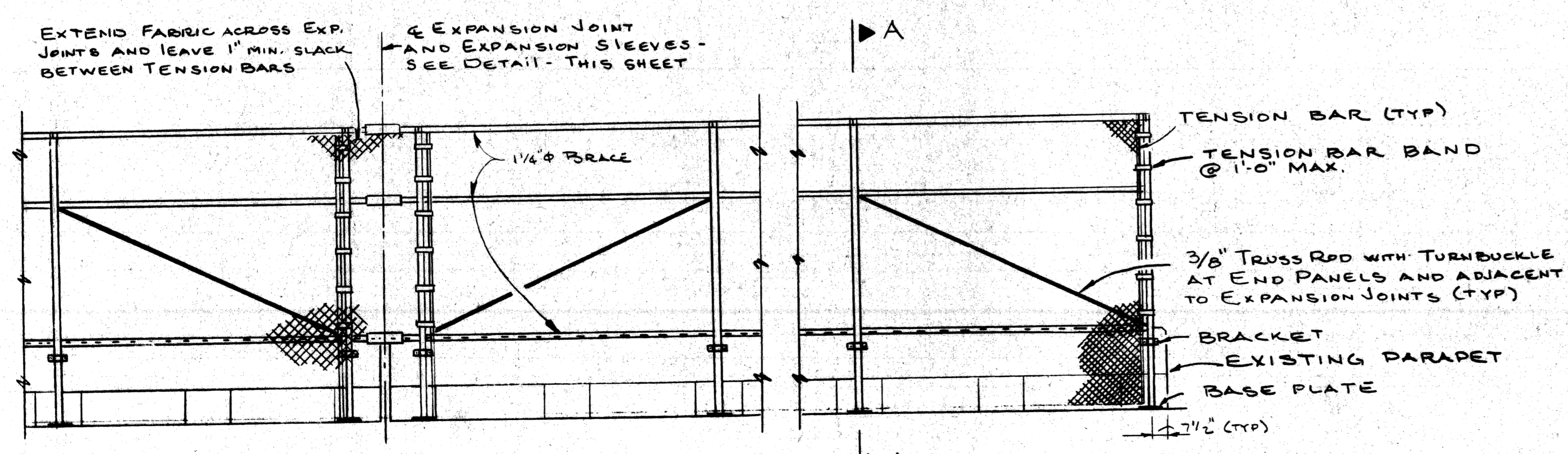
BASE PLATE DETAILS



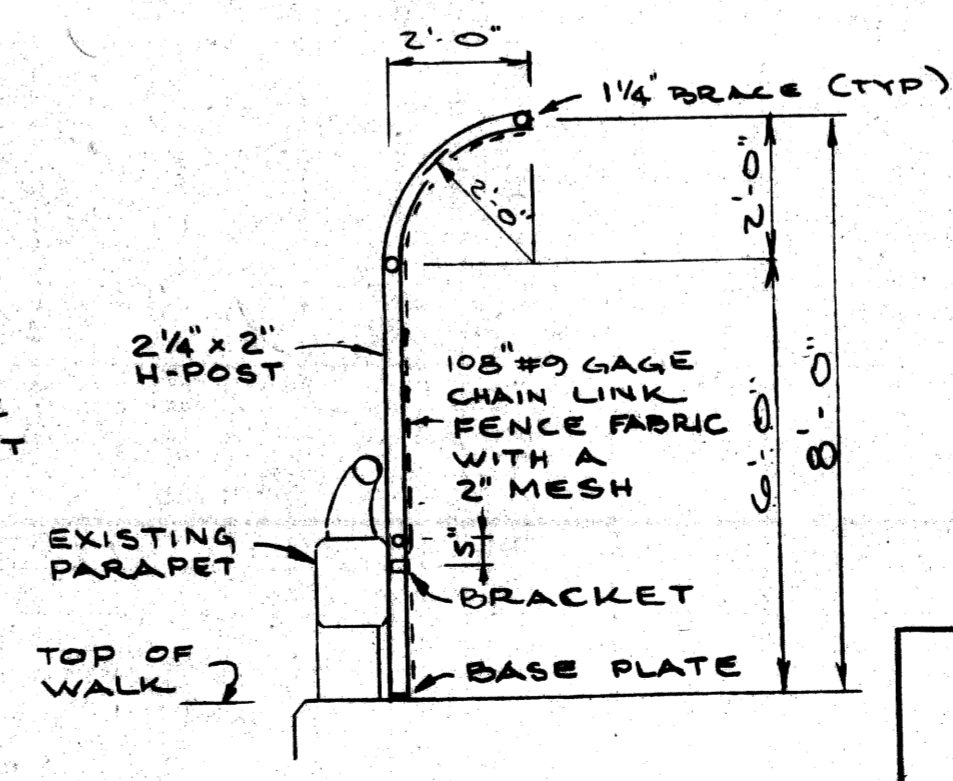
BRACKET DETAILS



PLAN



TYPICAL ELEVATION



SECTION A-A

PLANS PREPARED BY
CITY OF DETROIT
 DEPARTMENT OF PUBLIC WORKS
 CITY ENGINEERS OFFICE

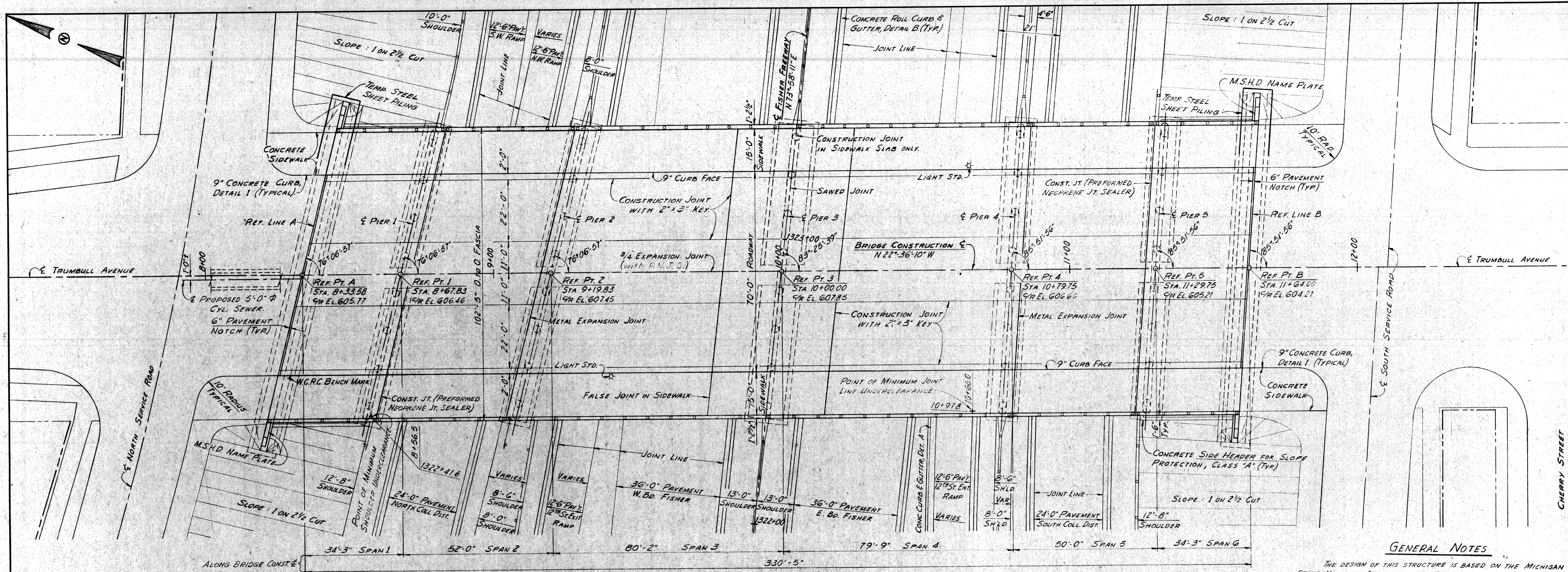
APPROVED: *T.E. McLowen*
 STRUCTURAL ENGINEER

JOB No. 79-22-26 K

MICHIGAN DEPARTMENT OF TRANSPORTATION
 TRUMBULL OVER I-75
 PROTECTIVE SCREENING DETAILS

REVISIONS			
NO.	DESCRIPTION	DATE	BY

DRAWN BY: *RAC* 3-19-81
 CHECKED BY: *(Signature)* 5-19-81
 SHEET OF: 5 OF 8
 S05 OF 82195



PLAN
SCALE: 1/16" = 1'-0"

GENERAL NOTES

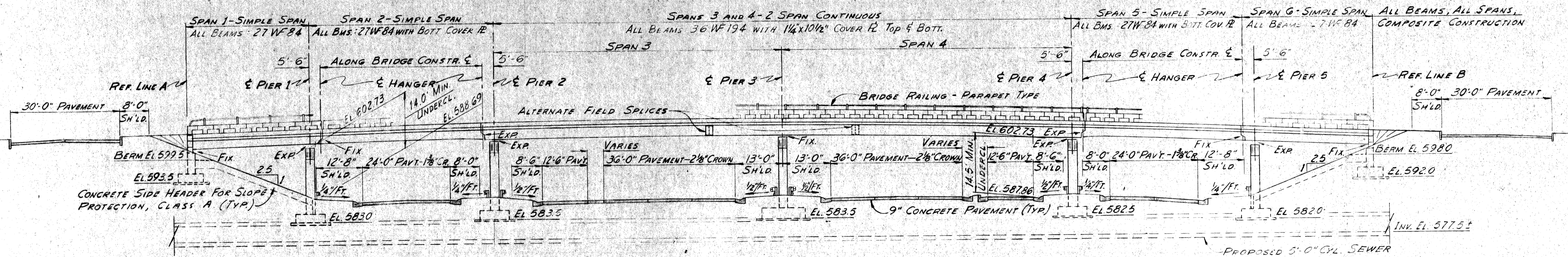
THE DESIGN OF THIS STRUCTURE IS BASED ON THE MICHIGAN STATE HIGHWAY DEPARTMENT'S SPECIFICATIONS FOR THE DESIGN OF HIGHWAY BRIDGES, 1958 EDITION AND CURRENT AASHTO STANDARD SPECIFICATIONS FOR HIGHWAY BRIDGES HS 20-44. LIVE LOAD PLUS IMPACT DEFLECTION SHALL BE LIMITED TO SPAN LENGTH AND 1/500 OF CANTILEVER ARM.

THE TOP OF ROADWAY SLAB AND TOPS OF SIDEWALKS ARE PARALLEL TO THE VERTICAL CURVES AND TANGENTS.

GRADED RIPRAP AS SLOPE PROTECTION - CLASS A IS NOT TO BE USED ON THIS PROJECT.

THE LATERAL JAY UNITS OF TEMPORARY STEEL SHEET PILING ARE AS REQUIRED AND DETERMINED BY THE ENGINEER.

FOR DETAILS OF SLOPE PROTECTION, SEE STANDARD SH. SP 2.



ELEVATION
NORMAL TO REFERENCE LINES
SCALE: 1/16" = 1'-0"

MISCELLANEOUS QUANTITIES		
ITEM	UNIT	AMT.
FOUNDATION DRAIN	LN. FT.	255
SLOPE PROTECTION, CLASS A	Sq. YD.	860
SAND- GRAVEL MATERIAL (COMPACTED-IN-PLACE)	Cu. YD.	1400

WORK THIS SHEET WITH SHEET NO. 7
MICHIGAN STATE HIGHWAY DEPARTMENT

APPROVED _____ APPROVED _____
1-75 FISHER FREEWAY UNDER TRUMBULL AVENUE
GENERAL PLAN OF STRUCTURE

REVISIONS

PLANS PREPARED BY THE BOARD OF
WAYNE COUNTY ROAD COMMISSIONERS
PHILIP J. NEUDECK WILLIAM E. KRIGER AL BARBOUR

APPROVED _____ APPROVED _____
ENGINEER OF DESIGN, STRUCTURES AND EXPRESSWAYS ENGINEER OF STRUCTURES AND EXPRESSWAYS COUNTY HIGHWAY ENGINEER

ISSUE NO. _____ DATE _____
COUNTY JOB SHEET NO. _____
1336 6
STATE PROJECT
S05 OF 82195A

COPI
EXISTING BRIDGE