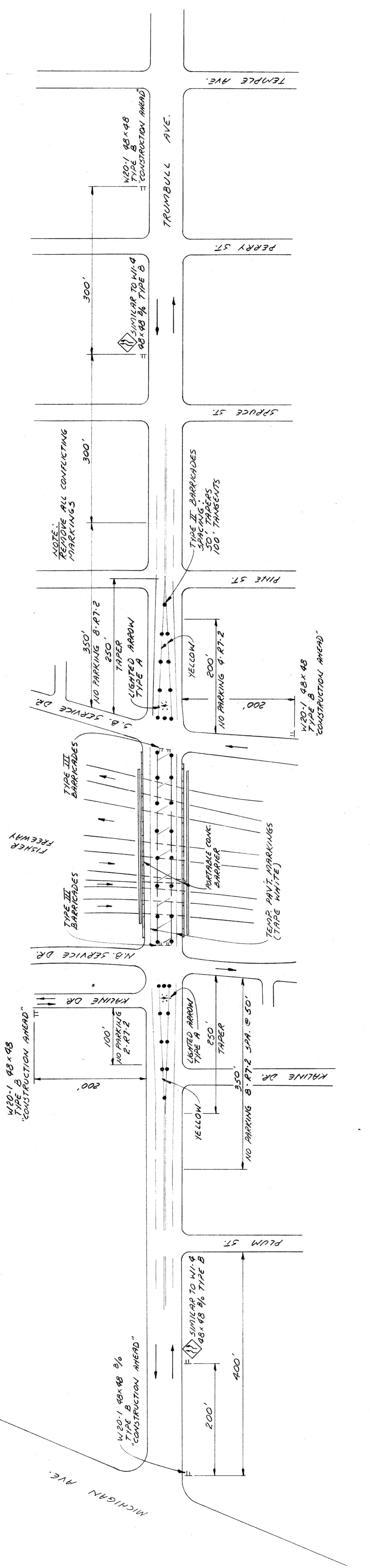


STAGE III: REVERSE SEQUENCE FOR WORK ON N.B. CURB LANES.

STAGE I  
SCALE: 1/4" = 100'



STAGE II  
SCALE: 1/4" = 100'

MICHIGAN DEPARTMENT OF TRANSPORTATION  
TRUMBULL AVE. OVER I-75  
STAGING AND CONSTRUCTION SIGNING

PLANS PREPARED BY  
CITY OF DETROIT  
DEPARTMENT OF PUBLIC WORKS  
CITY ENGINEERS OFFICE  
BUREAU OF HIGHWAYS AND EXPRESSWAYS

APPROVED: *T. E. McKeown*  
STRUCTURAL ENGINEER  
JOB No. 79-22-26 X

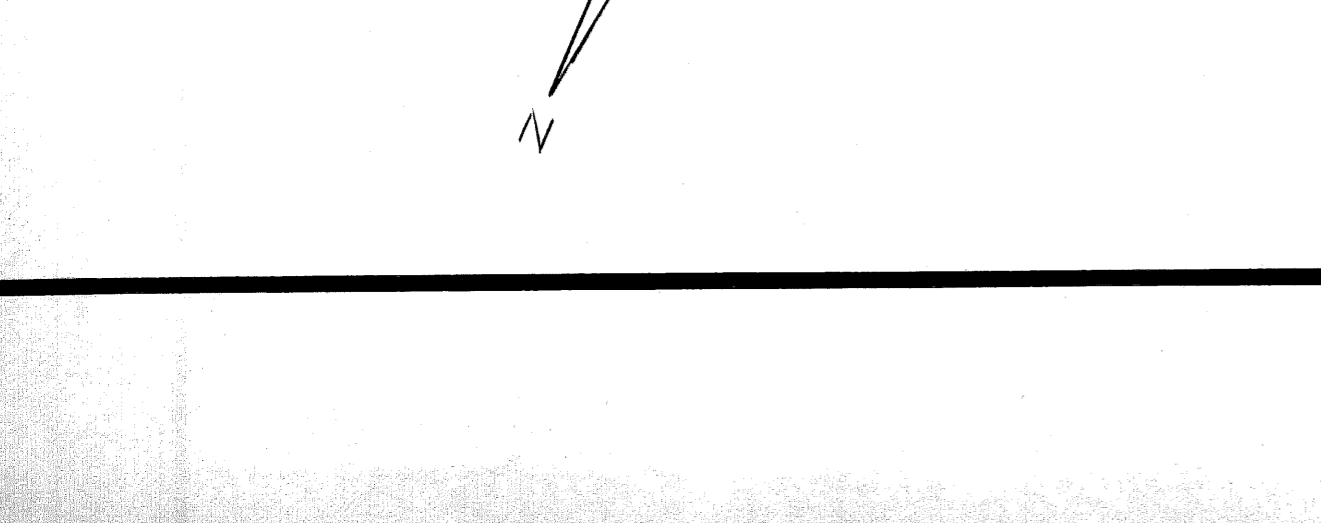
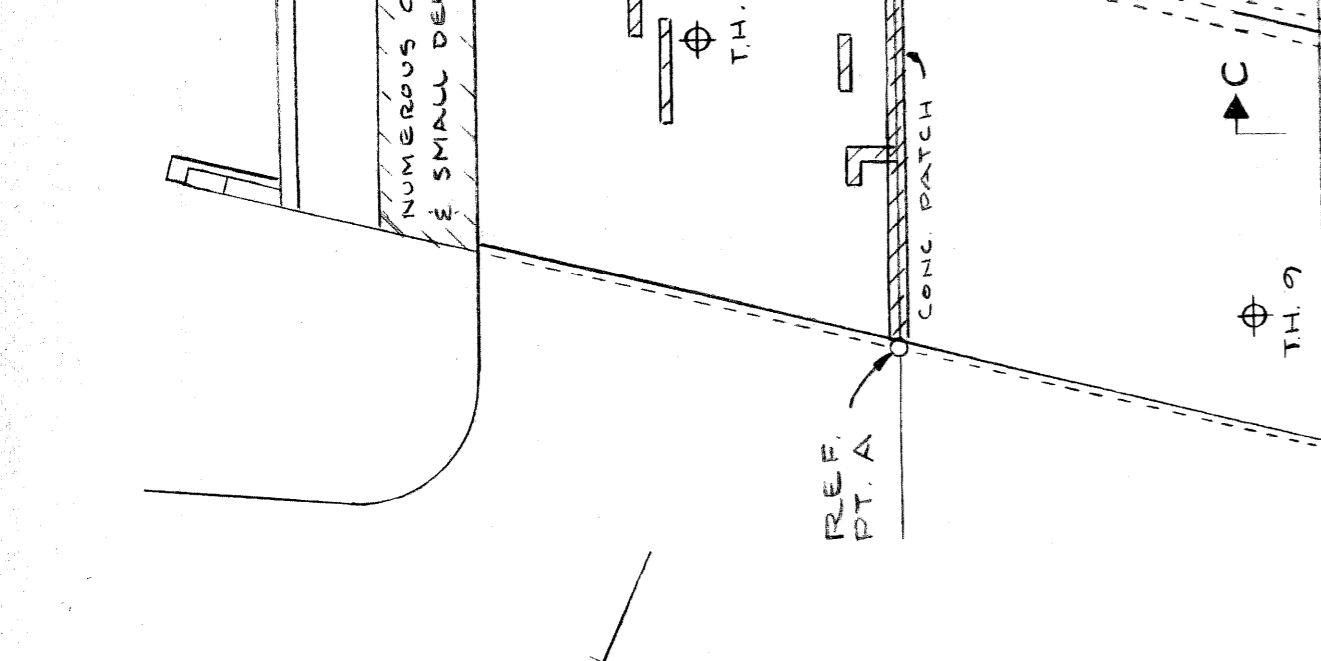
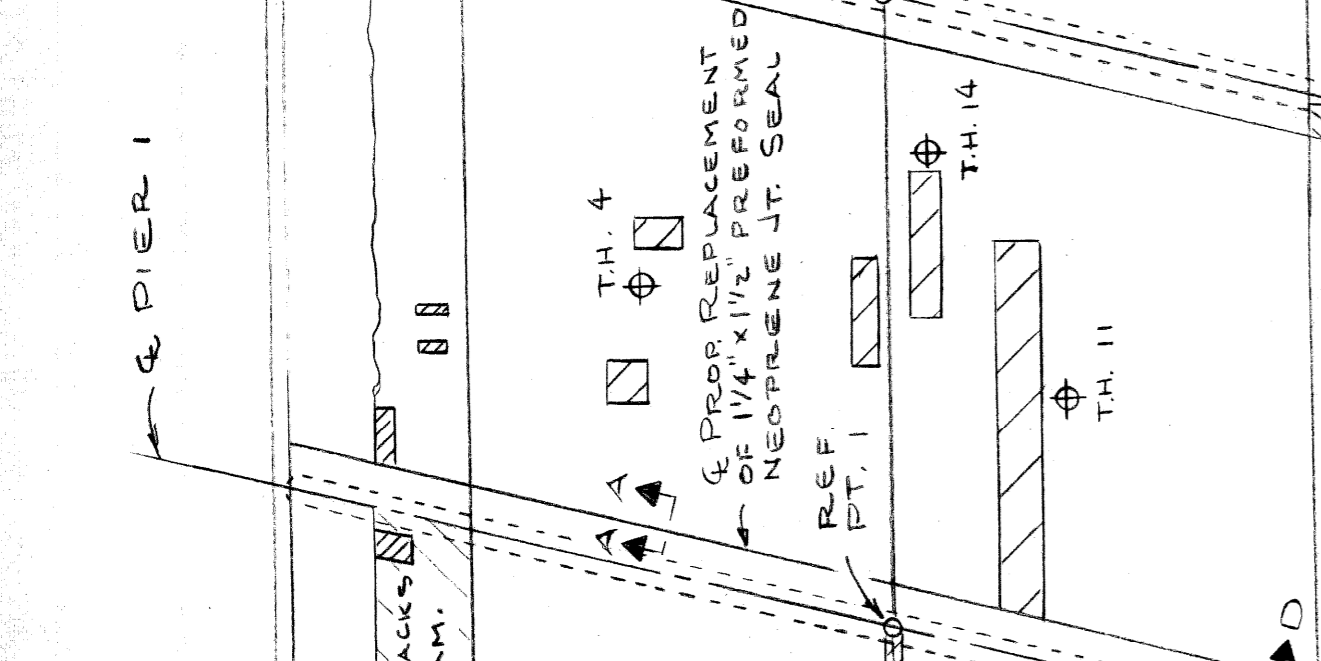
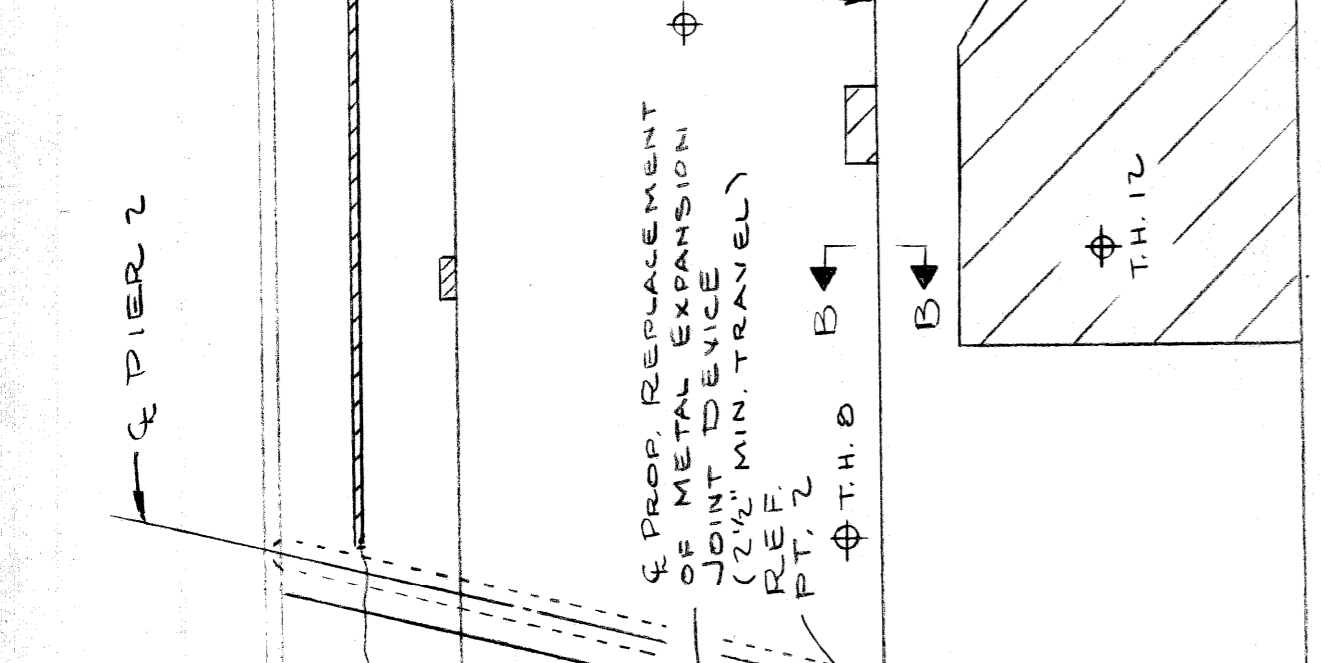
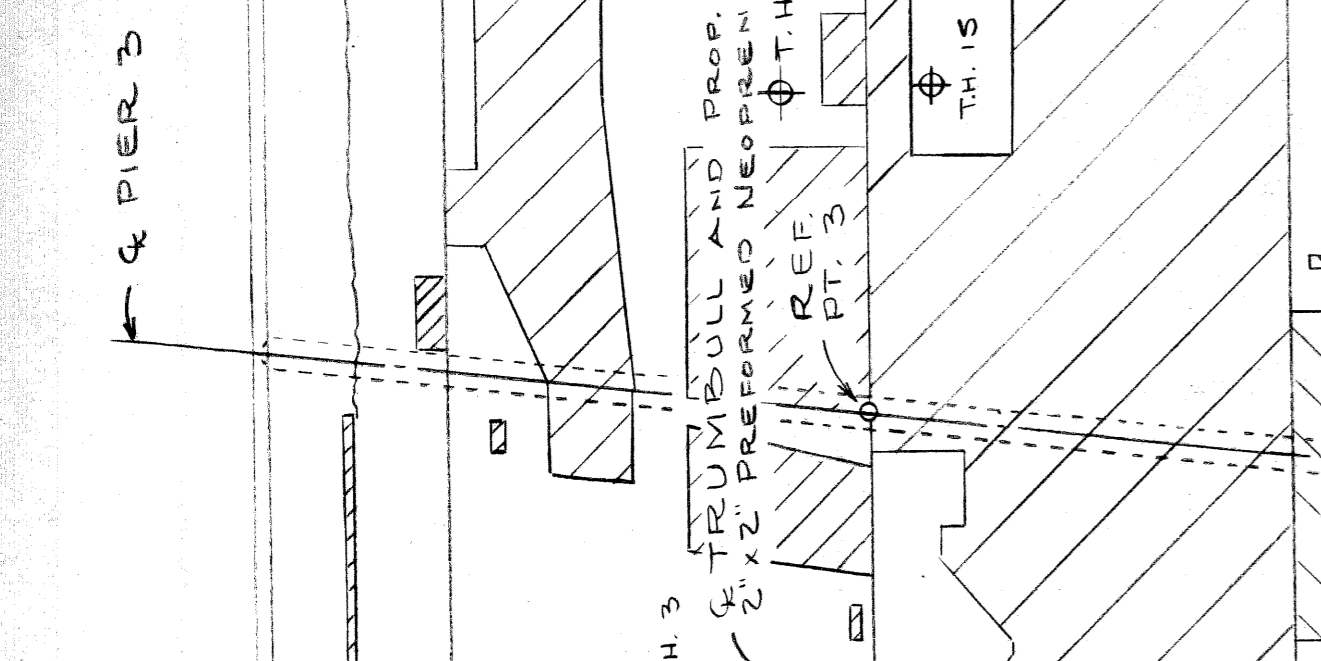
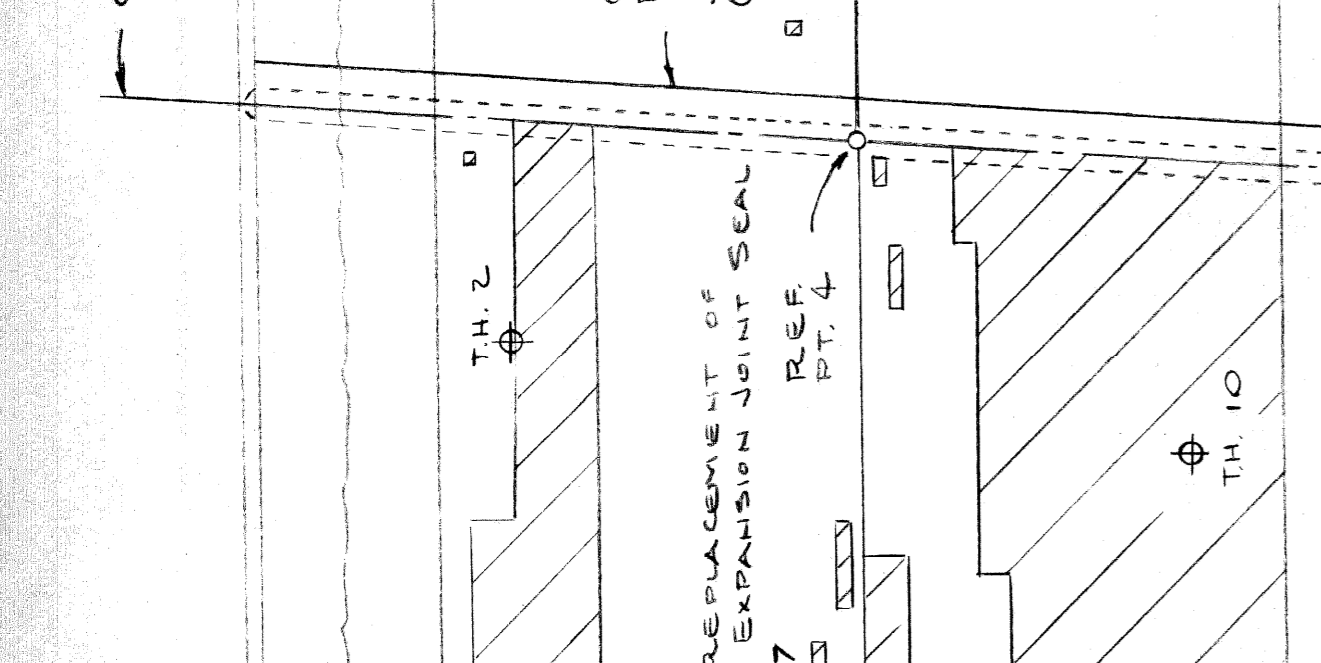
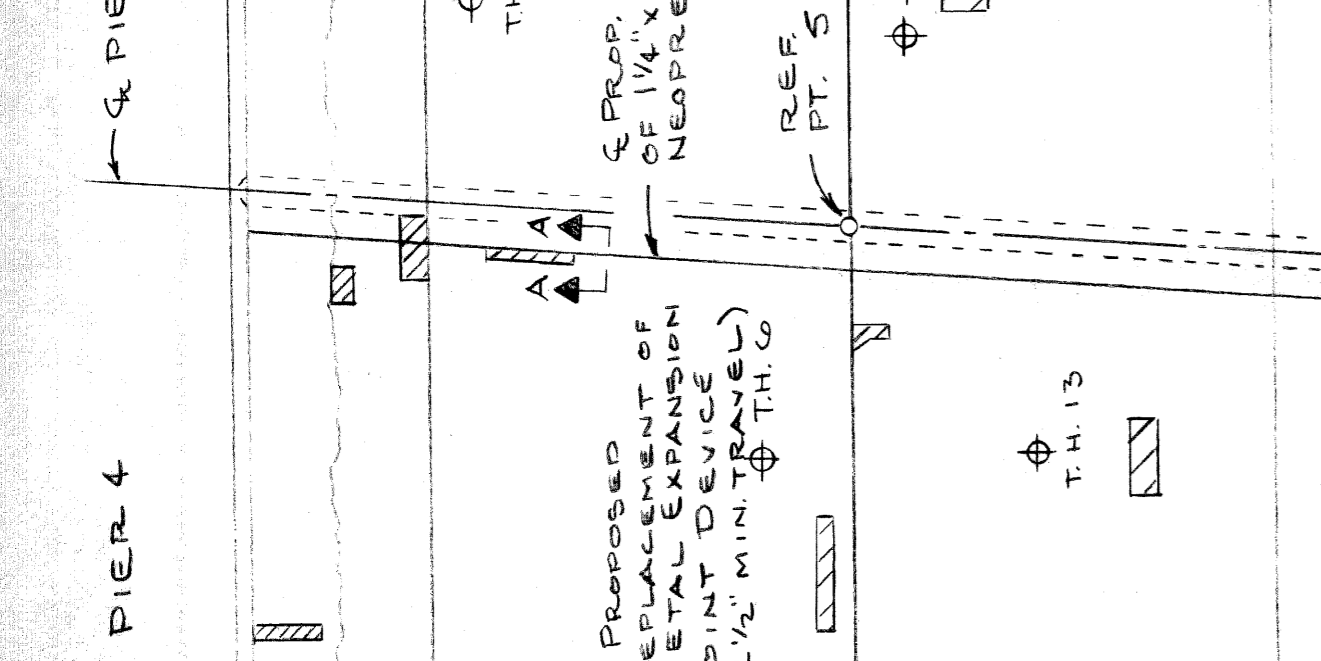
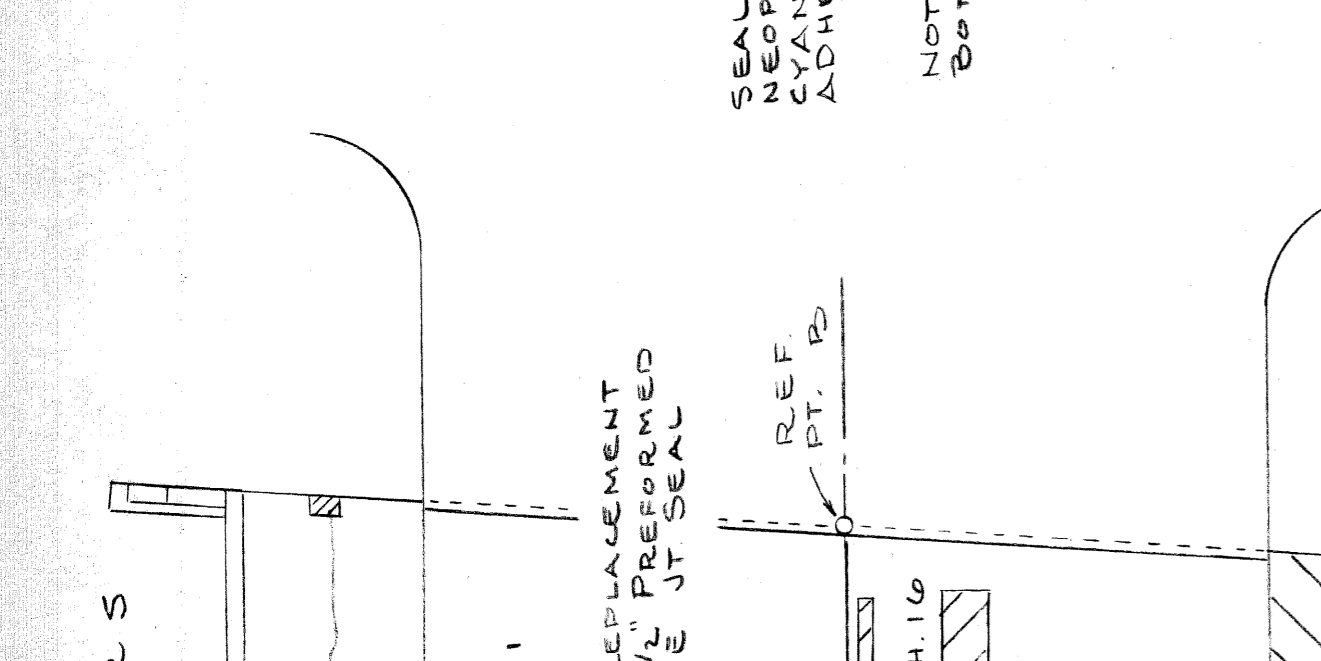
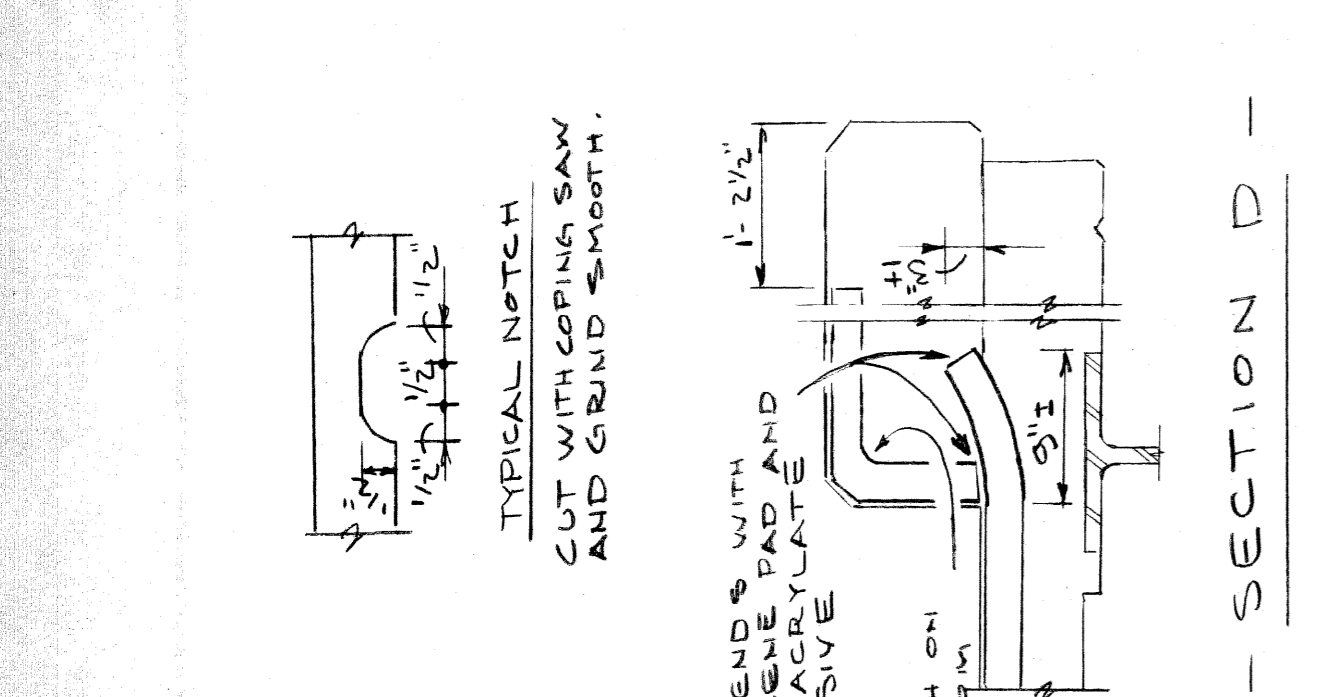
NO.	REVISIONS	DATE	BY

SHEET 1 OF 3  
DRAWN BY: A. G. B. 6-81  
CHECKED BY: D. G. 6-81  
DATE: 6-81

S05 OF 82195



TEST HOLE	DEPTH AT STEEL ABOVE	DEPTH AT STEEL BELOW	CHLORIDE CONTENT	
			ABOVE	BELOW
1	2 3/4"	4.64	3.68	
2	2 1/4"	3.20	0.48	
3	2 3/4"	0.96	0.16	
4	2 1/2"	1.76	0.96	
5	3"	1.12	1.75	
6	2 3/4"	3.68	1.75	
7	2 1/4"	2.23	0.81	
8	2 3/4"	4.80	1.75	
9	2 1/2"	3.77	10.57	
10	2 1/4"	6.73	6.56	
11	2 3/4"	2.24	2.56	
12	2 3/4"	2.24	1.44	
13	2 1/4"	3.04	1.44	
14	2 1/4"	9.45	1.75	
15	2 1/4"	3.20	1.12	
16	2 3/4"	1.12	0.33	
AVERAGE			3.91	2.32



INDICATED SPALLED AND PATCHED AREAS AS DETERMINED BY FIELD INSPECTION AND/OR DELAMINATED AREAS AS DETERMINED BY A DELAMINATION DETECTOR

REMOVE ALL UNSOUND MATERIAL FROM SPALLED AND/OR DELAMINATED AREAS

BLAST CLEAN EXPOSED REINFORCING STEEL AND REPLACE WEAKENED BEARS

FULL DEPTH PATCHES ARE TO BE FILLED WITH PATCHING MORTAR OR GRADE 455 CONCRETE

1 1/2\"/>

CONT. LONG CRACK TIE BIRE TRANSITION IN BOTH WALKS. NUMEROUS ADDITIONAL AREAS OF SMALL MEANDERING CRACKS AND RUST STAINING ARE NOT SHOWN.

1 1/2\"/>

CONTRACTOR'S OPTION. CARE SHALL BE TAKEN SO THAT REMOVAL MATERIAL DOES NOT FALL FROM THE STRUCTURE. SAW CUT A JOINT 1/4\"/>

THE VOLUME OF LATEX-MODIFIED SURFACING MIXTURE IS BASED ON THE OVERLAY APPROX WEDGES AND AN ESTIMATED QUANTITY TO FILL CHIPPED AREAS AND TO MAKE GRADE ADJUSTMENTS AS DETERMINED BY THE ENGINEER.

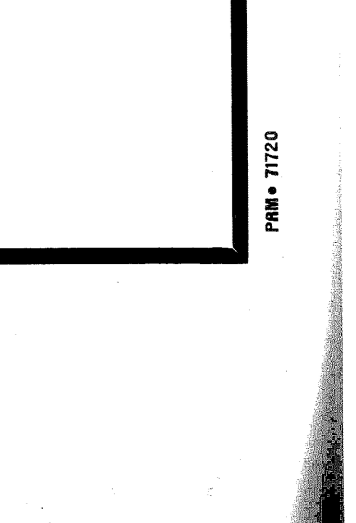
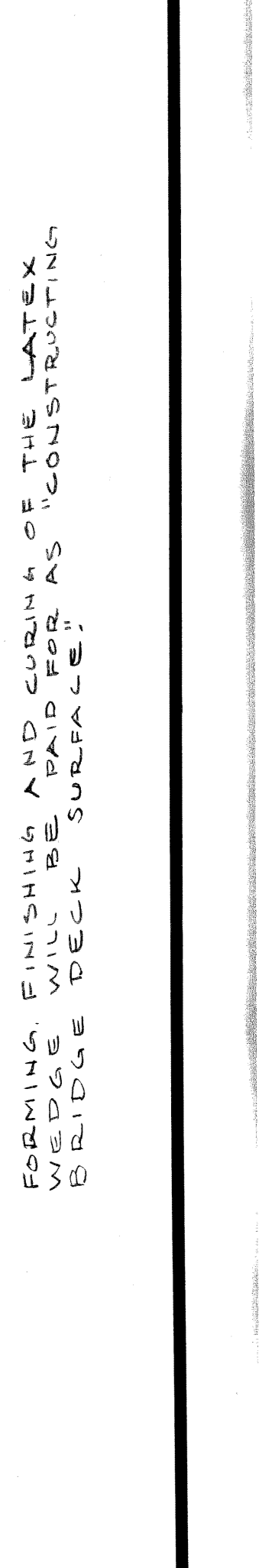
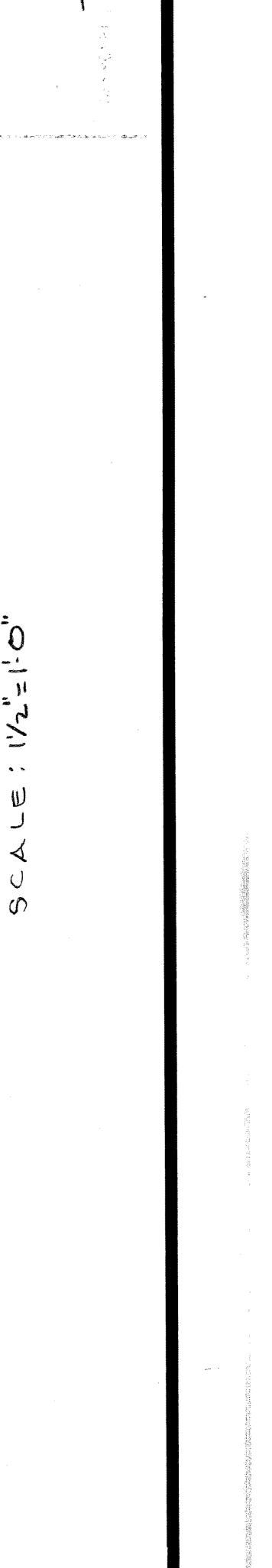
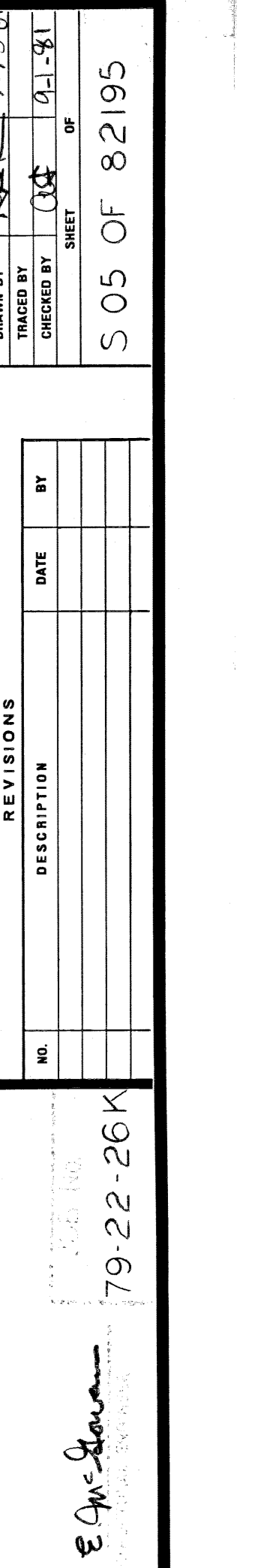
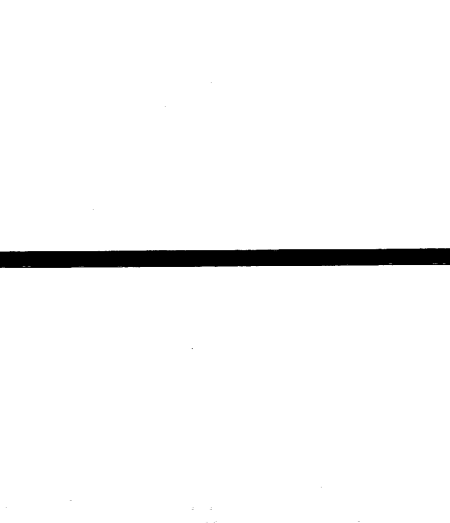
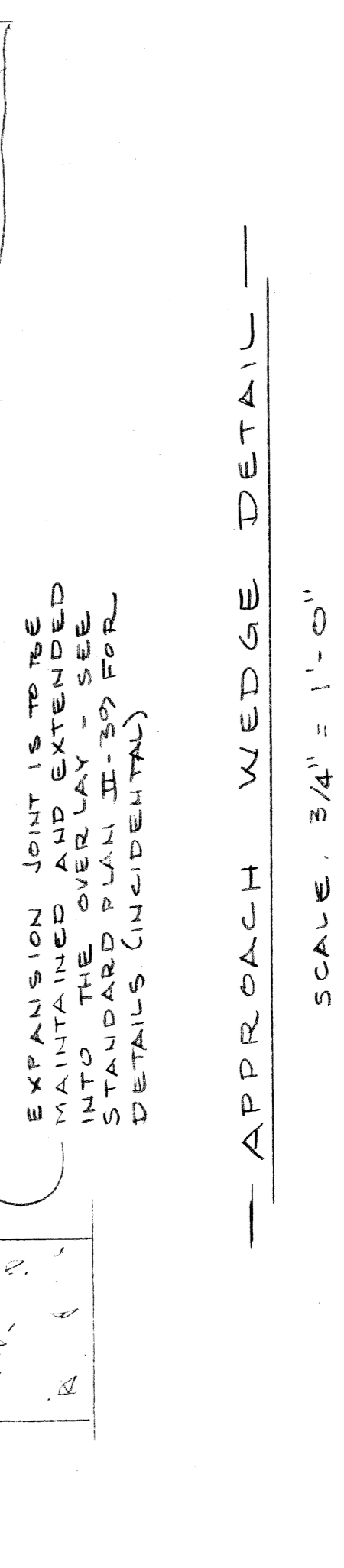
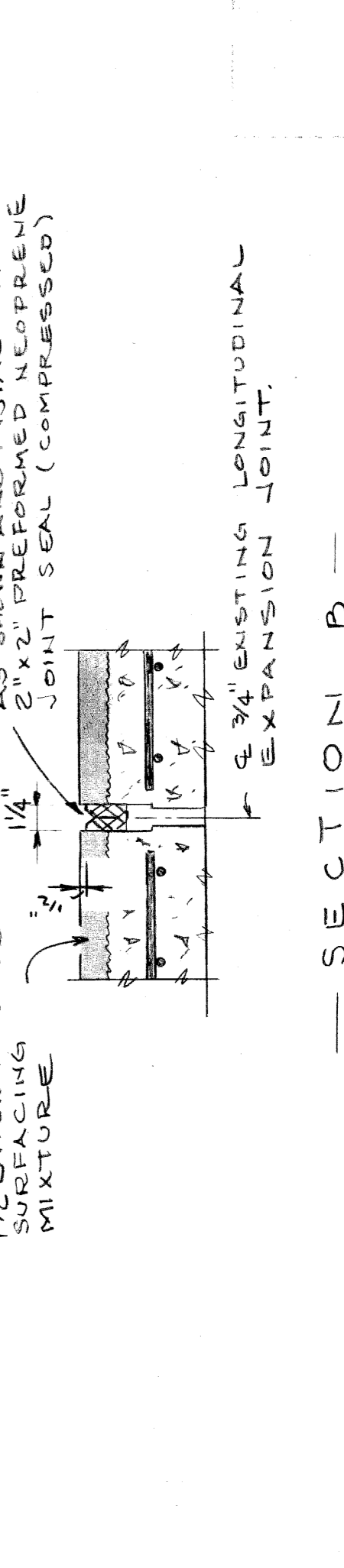
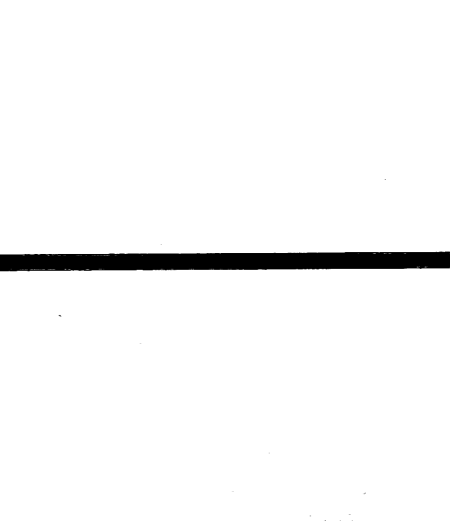
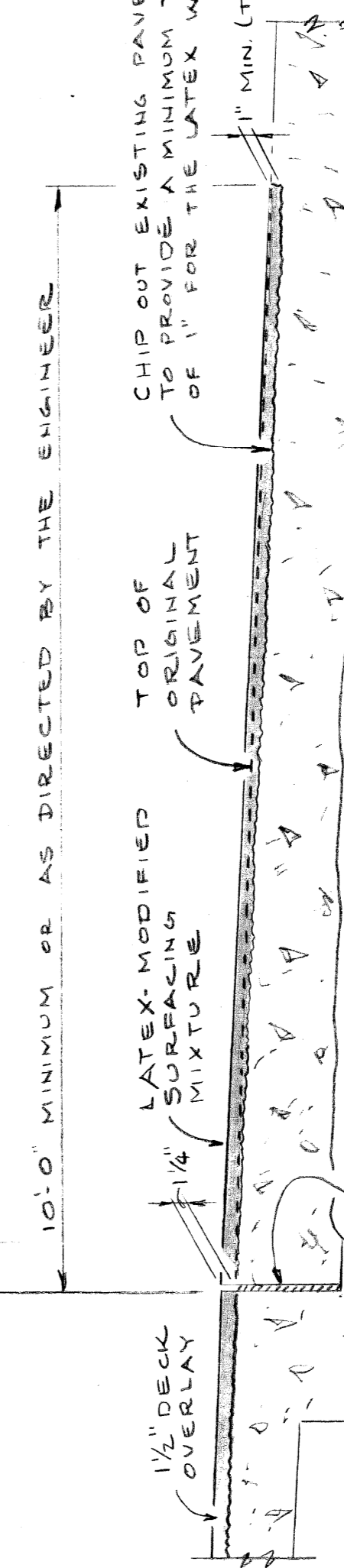
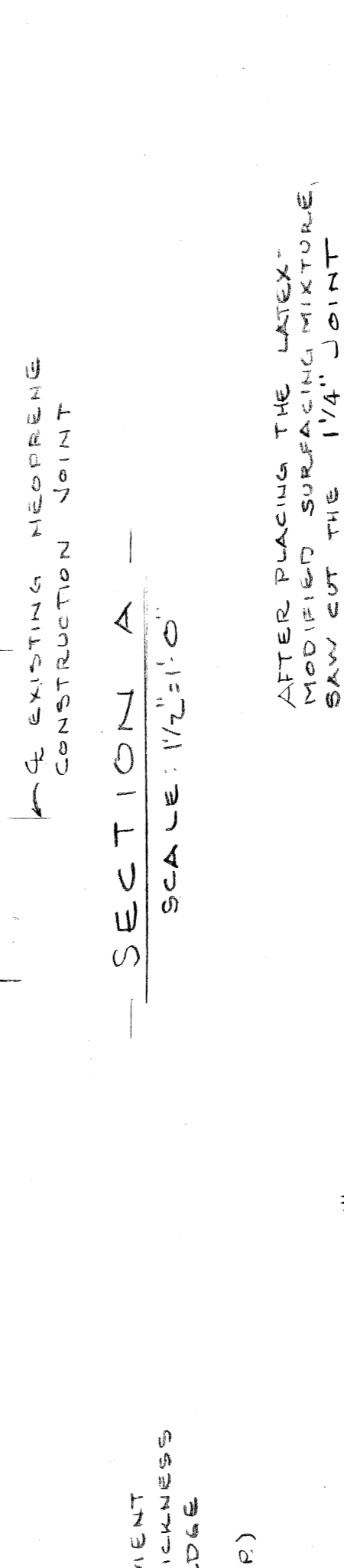
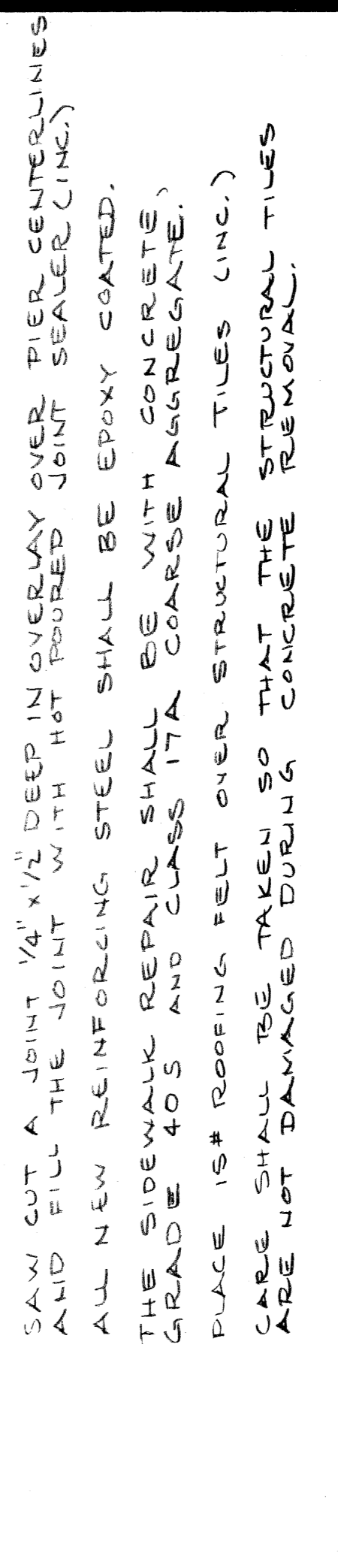
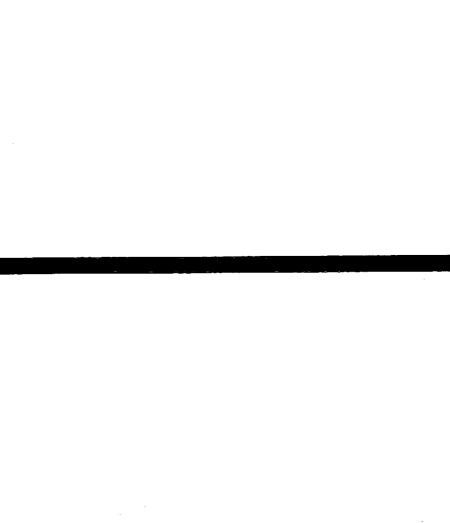
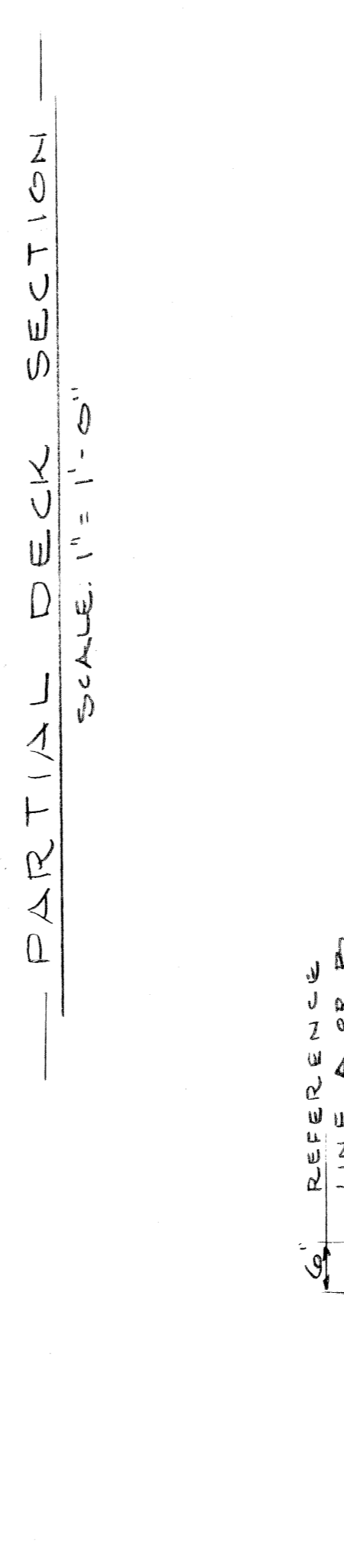
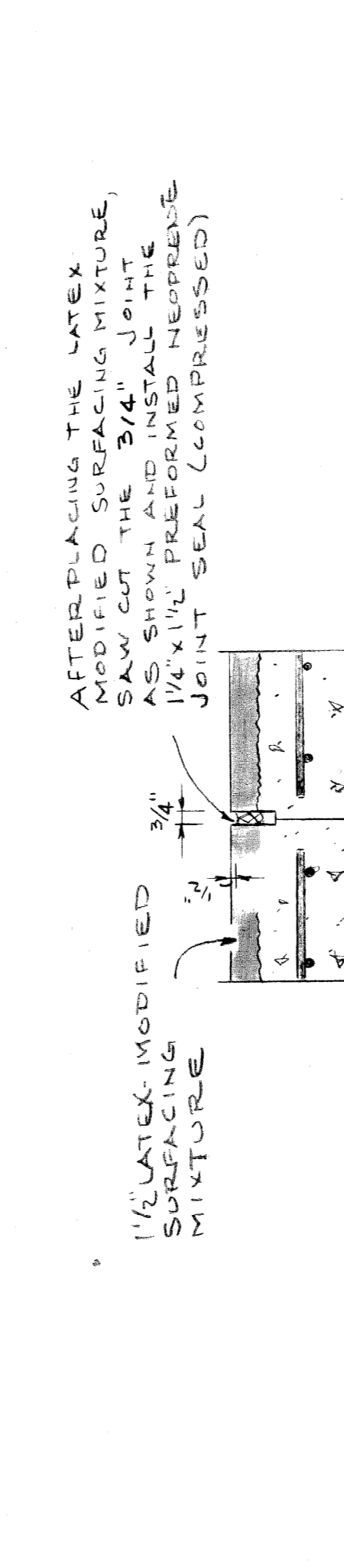
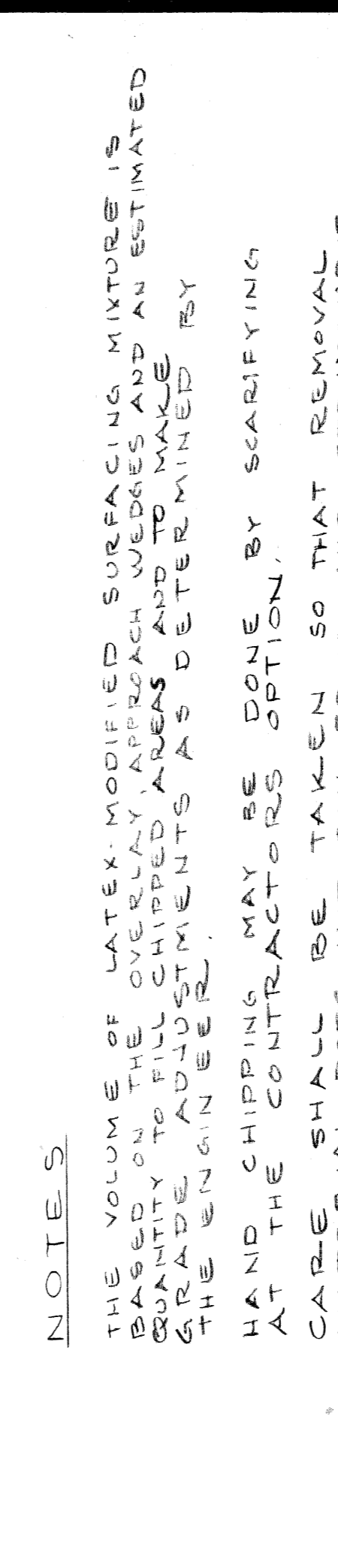
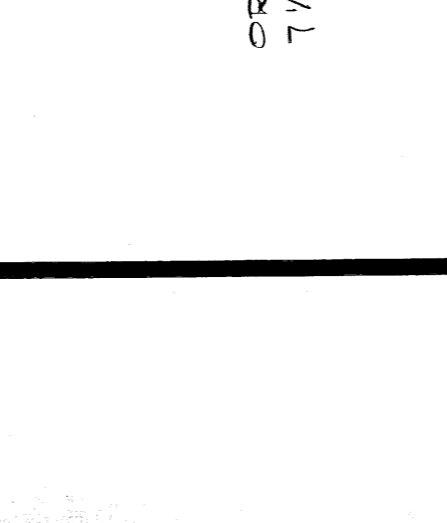
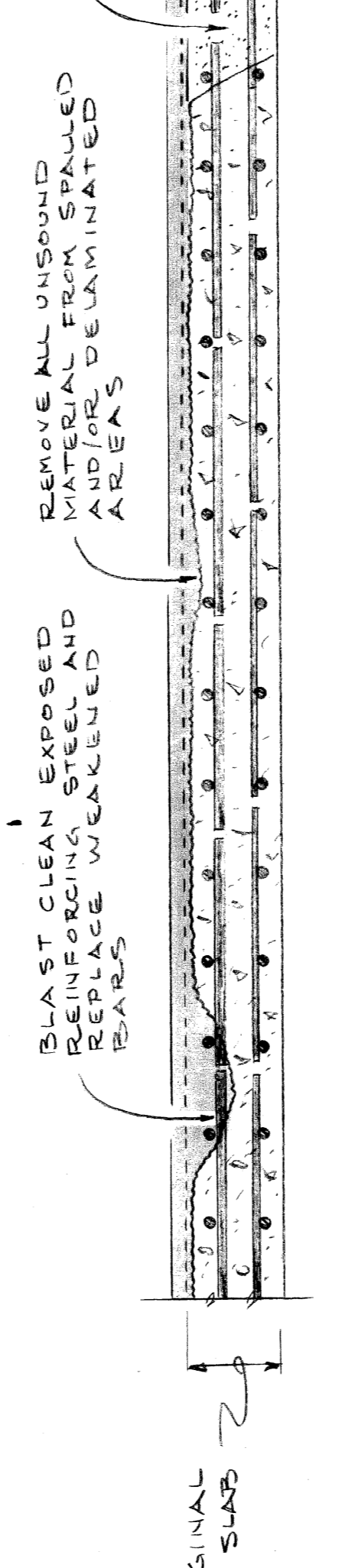
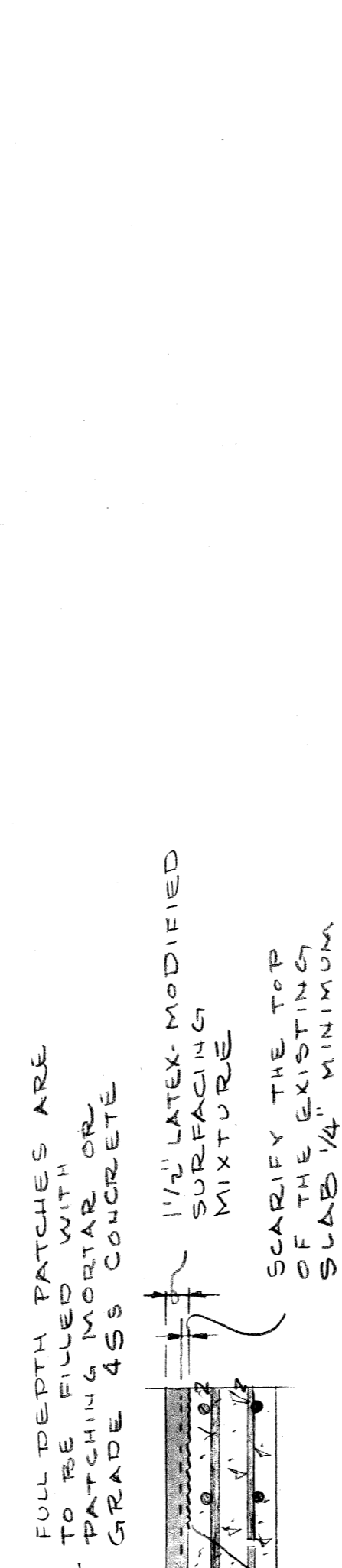
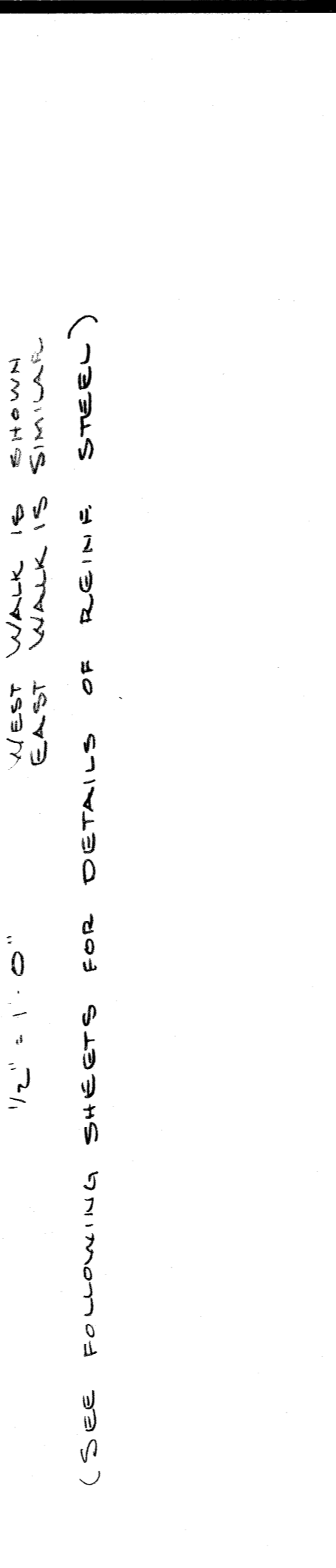
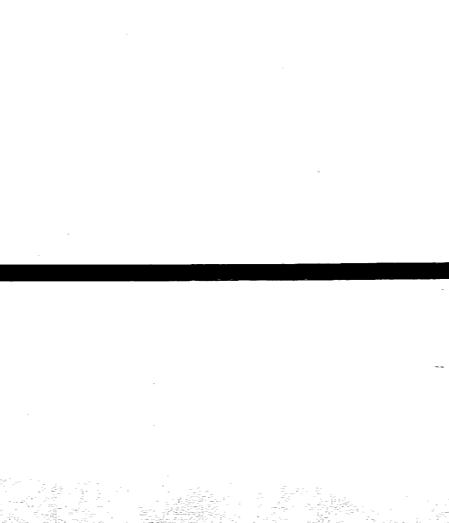
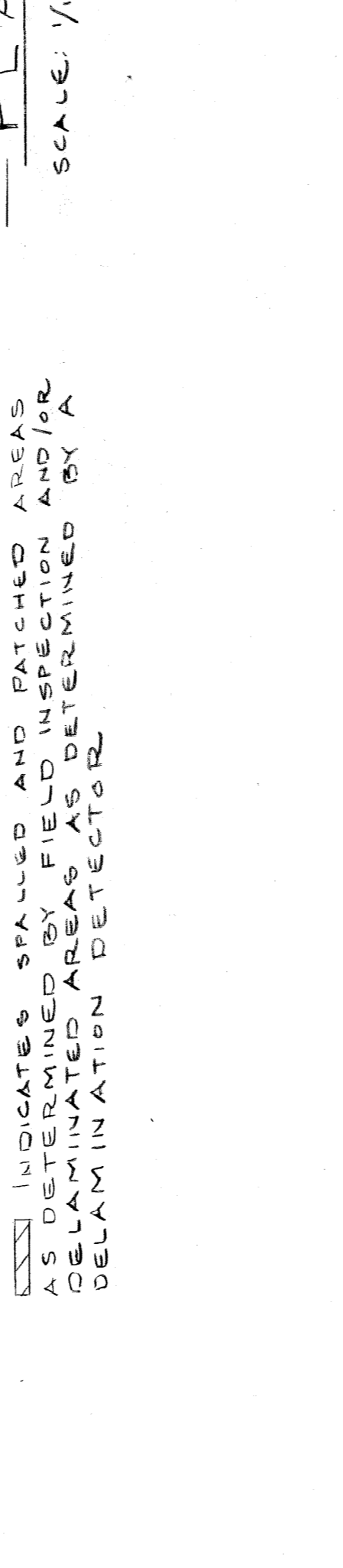
HAND CHIPPING MAY BE DONE BY SCALFYING AT THE CONTRACTOR'S OPTION.

CARE SHALL BE TAKEN SO THAT REMOVAL MATERIAL DOES NOT FALL FROM THE STRUCTURE.

SAW CUT A JOINT 1/4\"/>

TEST HOLE DATA

TEST HOLE	DEPTH AT STEEL ABOVE	DEPTH AT STEEL BELOW	CHLORIDE CONTENT ABOVE	CHLORIDE CONTENT BELOW
1	2 3/4"	4.64	3.68	
2	2 1/4"	3.20	0.48	
3	2 3/4"	0.96	0.16	
4	2 1/2"	1.76	0.96	
5	3"	1.12	1.75	
6	2 3/4"	3.68	1.75	
7	2 1/4"	2.23	0.81	
8	2 3/4"	4.80	1.75	
9	2 1/2"	3.77	10.57	
10	2 1/4"	6.73	6.56	
11	2 3/4"	2.24	2.56	
12	2 3/4"	2.24	1.44	
13	2 1/4"	3.04	1.44	
14	2 1/4"	9.45	1.75	
15	2 1/4"	3.20	1.12	
16	2 3/4"	1.12	0.33	
AVERAGE			3.91	2.32



REVISIONS

NO.	DESCRIPTION	DATE	BY

DATE: 79-22-26K

T. E. McShane

905 OF 82195

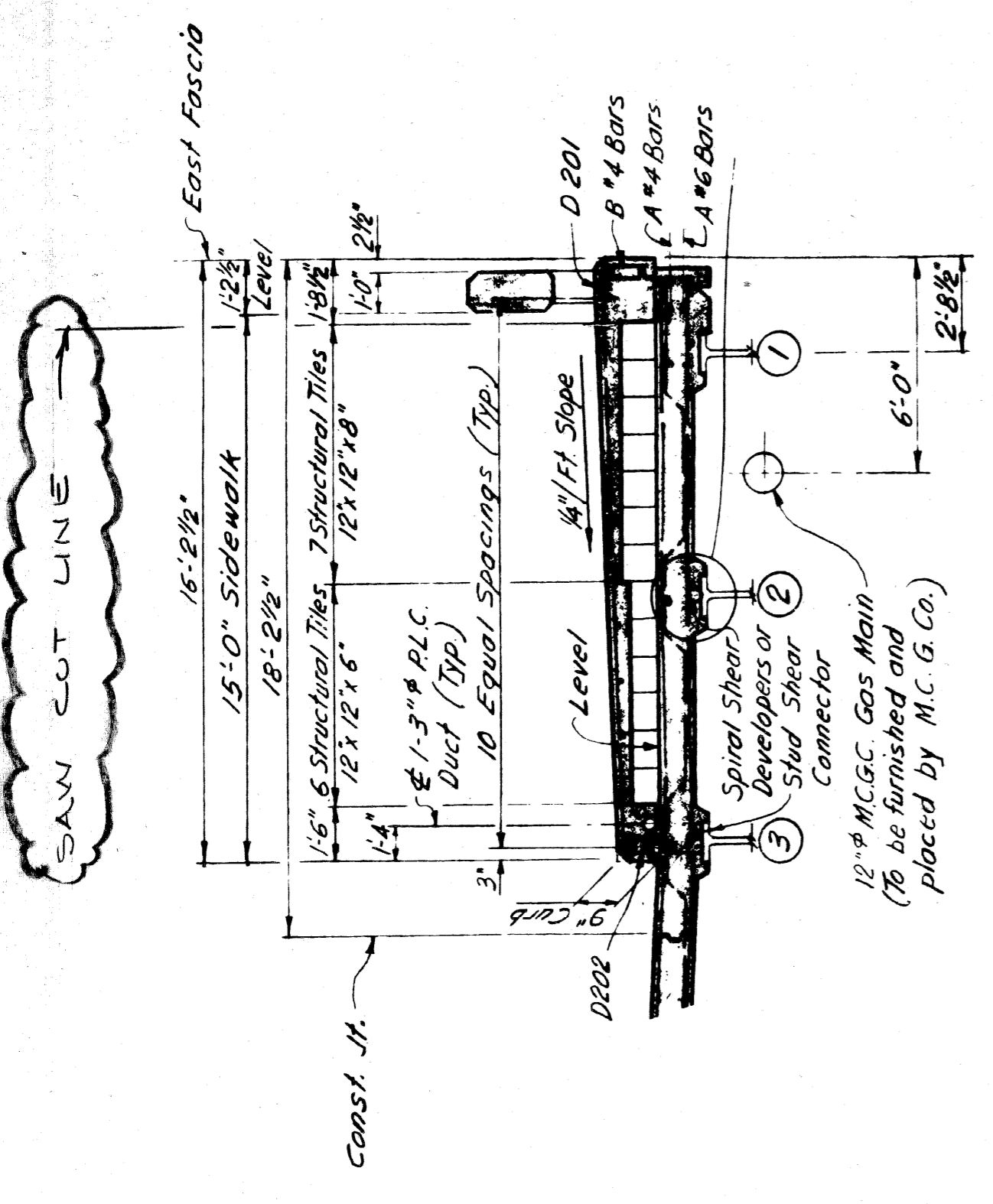
MICHIGAN DEPARTMENT OF TRANSPORTATION

TRUMBULL AVENUE OVER I-75

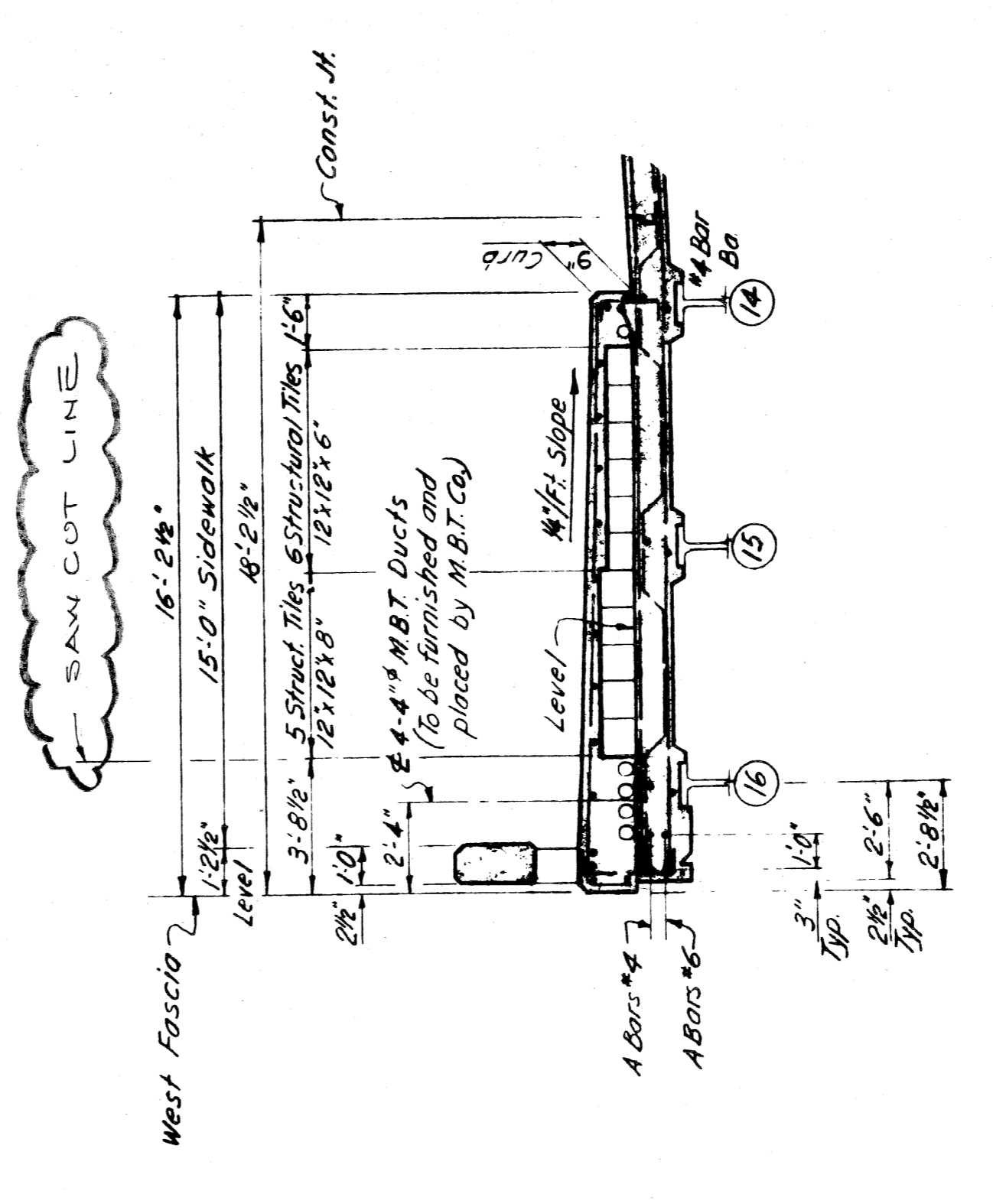
RESURFACING DETAILS

FORM 7-7720

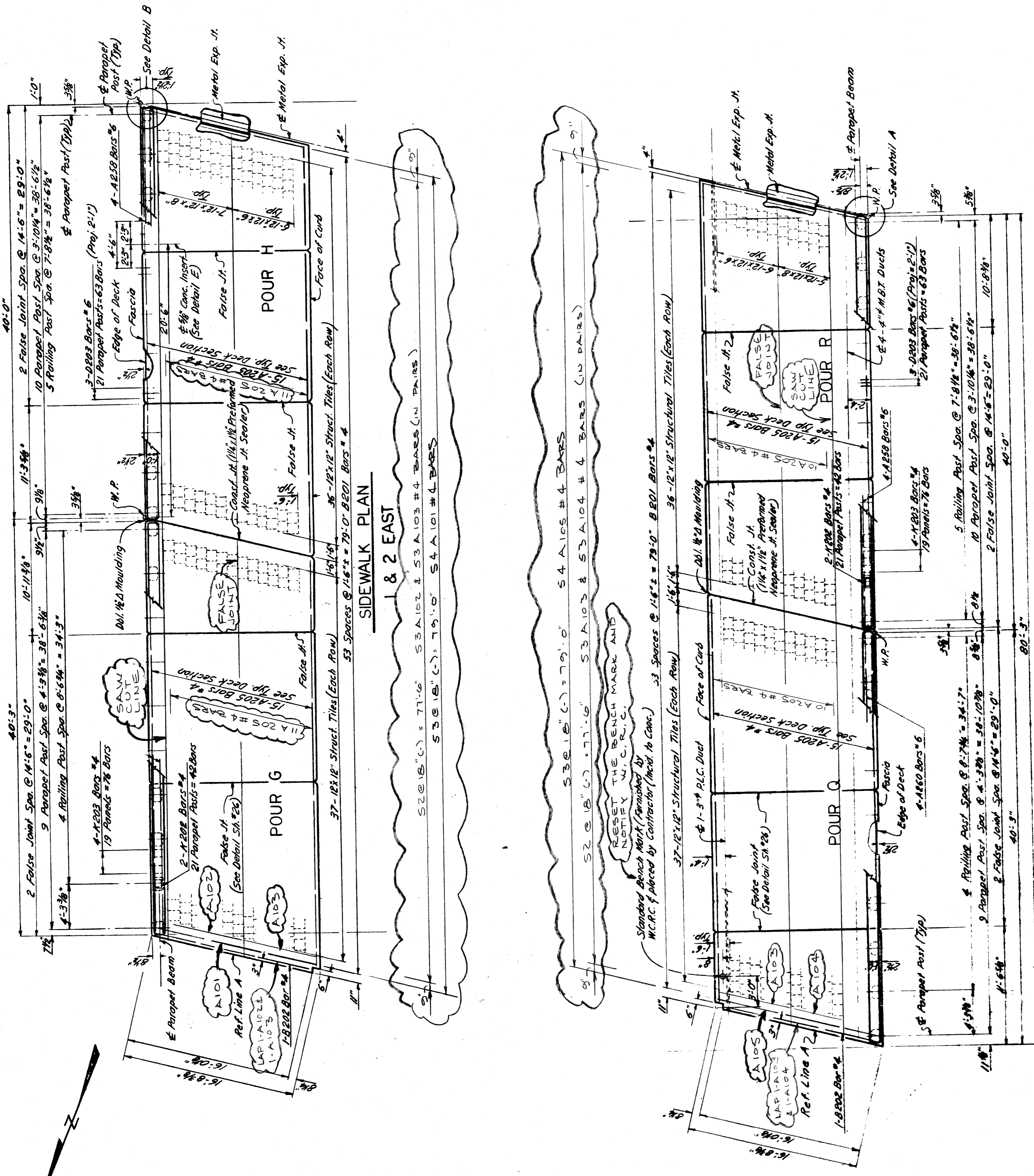




EXISTING EAST WALK



EXISTING WEST WALK



SIDEWALK PLAN  
1 & 2 EAST

SIDEWALK PLAN  
1 & 2 WEST

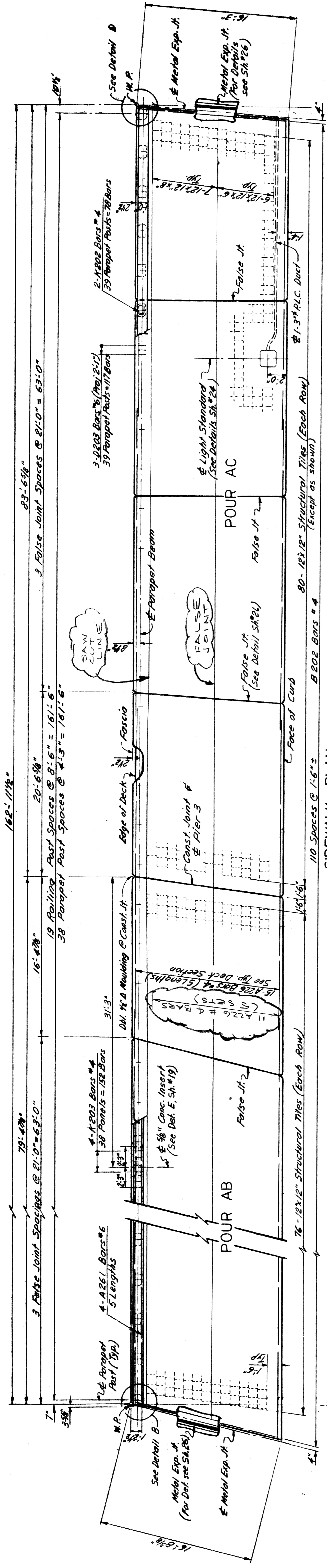
MICHIGAN DEPARTMENT OF TRANSPORTATION  
TRUMBULL AVE OVER I - 75  
SIDEWALK REPAIR

APPROVED: **T. E. O'Malley**  
STRUCTURAL ENGINEER  
JOB No. 19-22-26K  
DATE

DESIGNED BY	DATE
CHECKED BY	DATE
REVISIONS	
NO.	DESCRIPTION

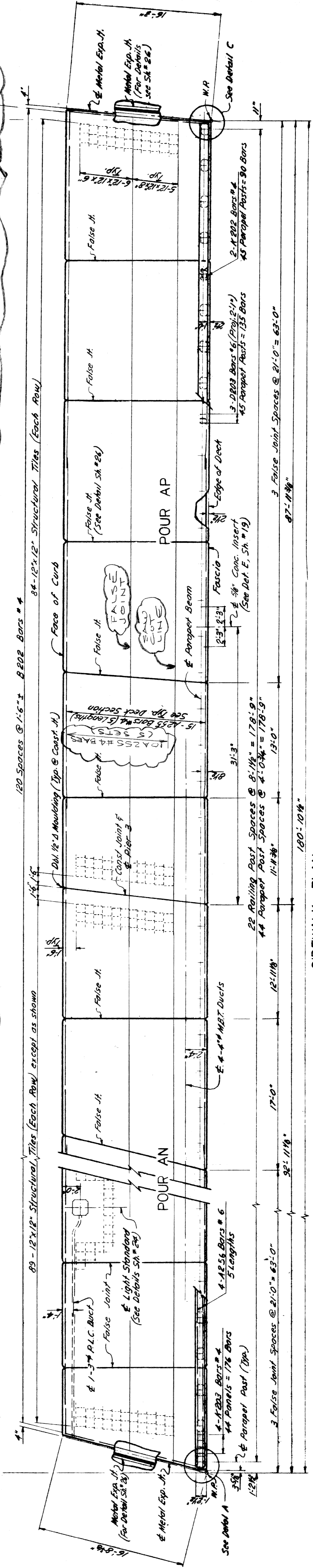
S 05 OF 82195





**SIDEWALK PLAN**  
**3 & 4 EAST**

NOTE: FIELD CUT BARS AS REQ. AROUND PRECAST LIGHT STANDARDS (TYP)



**SIDEWALK PLAN**  
**SPANS 3 & 4 WEST**

MICHIGAN DEPARTMENT OF TRANSPORTATION  
TRUMBULL AVE OVER I - 75  
SIDEWALK REPAIR

PLANS PREPARED BY  
CITY OF DETROIT  
DEPARTMENT OF PUBLIC WORKS  
CIVIL ENGINEERING DIVISION

NO.	DESCRIPTION	DATE	BY

APPROVED: *T. E. McLean*  
STRUCTURAL ENGINEER

DATE	BY	REVISION
9-1-81	FRK	
9-1-81		
9-1-81		

S 05 OF 82195

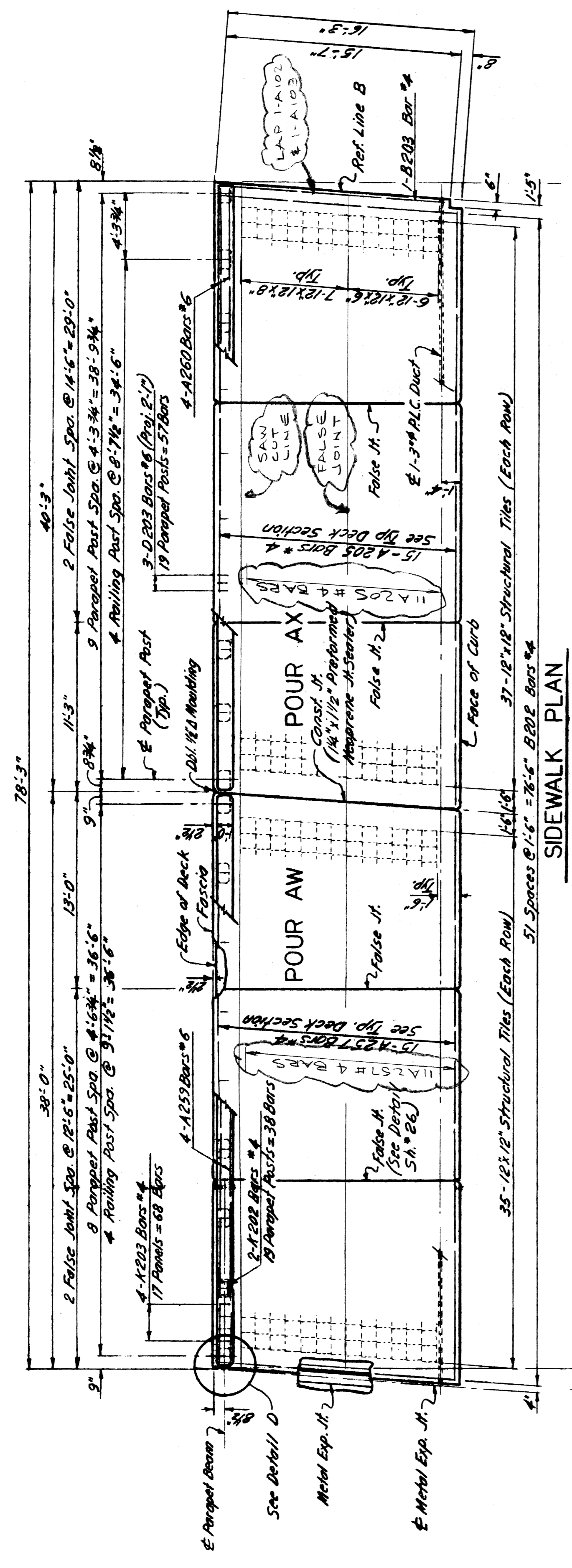


QUANTITIES - WALK & LATEX		
ITEM	UNIT	AMOUNT
PREFORMED NEOPRENE JOINT SEAL, 1/4"	L.F.	206
PREFORMED NEOPRENE JOINT SEAL, 2"	L.F.	330
SCARIFYING	S.Y.	2562
HAND CHIPPING	S.Y.	609
STEEL REINFORCEMENT, EPOXY COATED	LBS	13,700
FULL DEPTH PATCHES	C.Y.	2
LATEX-MODIFIED SURFACING MIXTURE	CY	115
CONSTRUCTING BRIDGE DECK SURFACE	S.Y.	2718
REMOVAL OF EXISTING WALK	L.S.	1
CONCRETE - GRADE 405	C.Y.	92

SIDEWALK REPAIR BARS		
MARK	LENGTH	WEIGHT
A 101	14'-3"	217
A 102	6'-0"	216
A 103	7'-3"	442
A 104	4'-9"	226
A 105	12'-3"	227
A 205	39'-6"	63
A 206	33'-3"	55
A 255	36'-9"	50
A 257	37'-6"	21
		TOTAL=12,393#

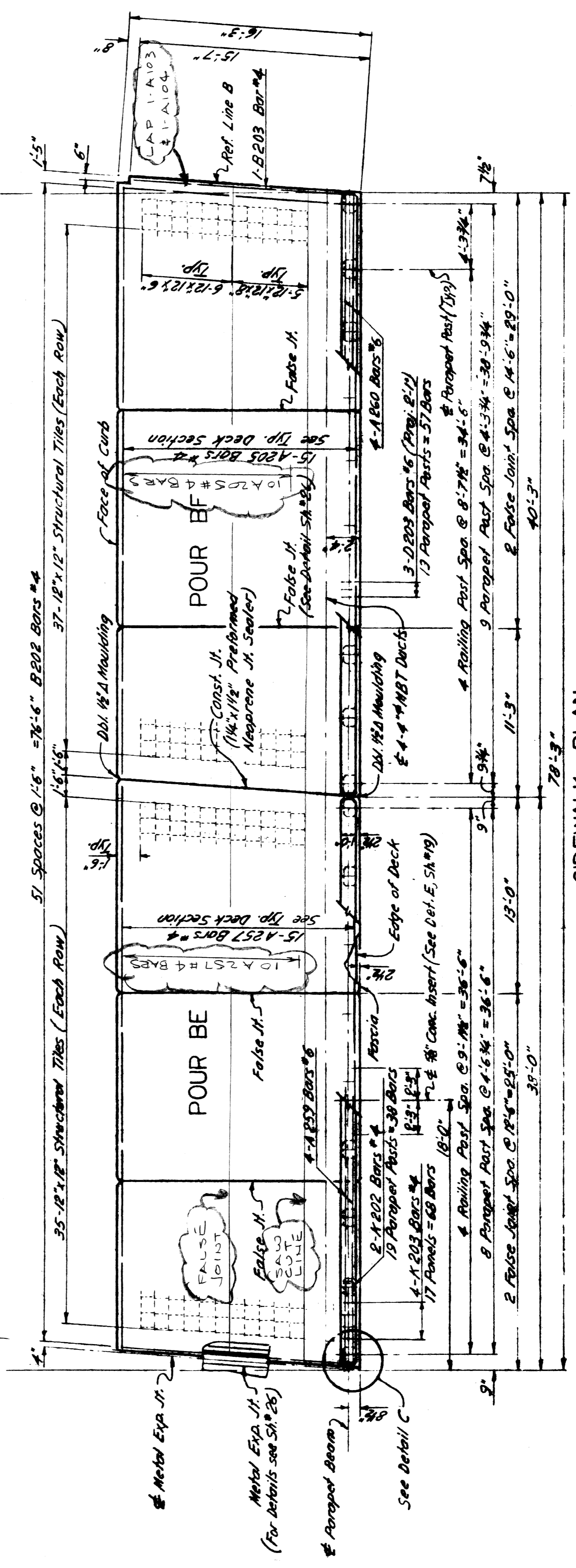
**SIDEWALK REPAIR NOTES**

SEE SECTION C ON RESURFACING DETAIL SHEET FOR GENERAL DETAILS.  
 THE 3 SIDEWALK REPAIR SHEETS ARE REPRODUCTIONS OF PARTS OF THE ORIGINAL CONTRACT DRAWINGS. NEW WORK IS INDICATED BY CLOUDS.  
 REPLACE TRANSVERSE FALSE JOINTS IN THEIR ORIGINAL LOCATIONS AND ADD A NEW LONGITUDINAL FALSE JOINT AT THE STRUCTURAL TILE SIZE TRANSITION.  
 REMOVAL OF SIDEWALK SHALL BE DONE IN A CAREFUL MANNER SO AS TO PRESERVE EXISTING TILES. PORTIONS OF SIDEWALKS OR WHERE EXISTING TILES ARE AT RIGHT ANGLES TO THE TRANSVERSE JOINTS SHALL BE REMOVED TO THE TOP OF ADJACENT TILES AND REPAIRED. ANY DAMAGED OR CRACKED TILES SHALL BE REPLACED AS DIRECTED BY THE ENGINEER. REPLACEMENT OF ANY TILE SHALL BE INCIDENTAL TO REMOVAL OF EXISTING WALK.



**SIDEWALK PLAN**  
**5 & 6 EAST**

50'-6" S1 A 102 & S1 A 103 # 4 BARS (10 PAIRS)  
 52'-0" S2 A 101 # 4 BARS



**SIDEWALK PLAN**  
**SPANS 5 & 6 WEST**

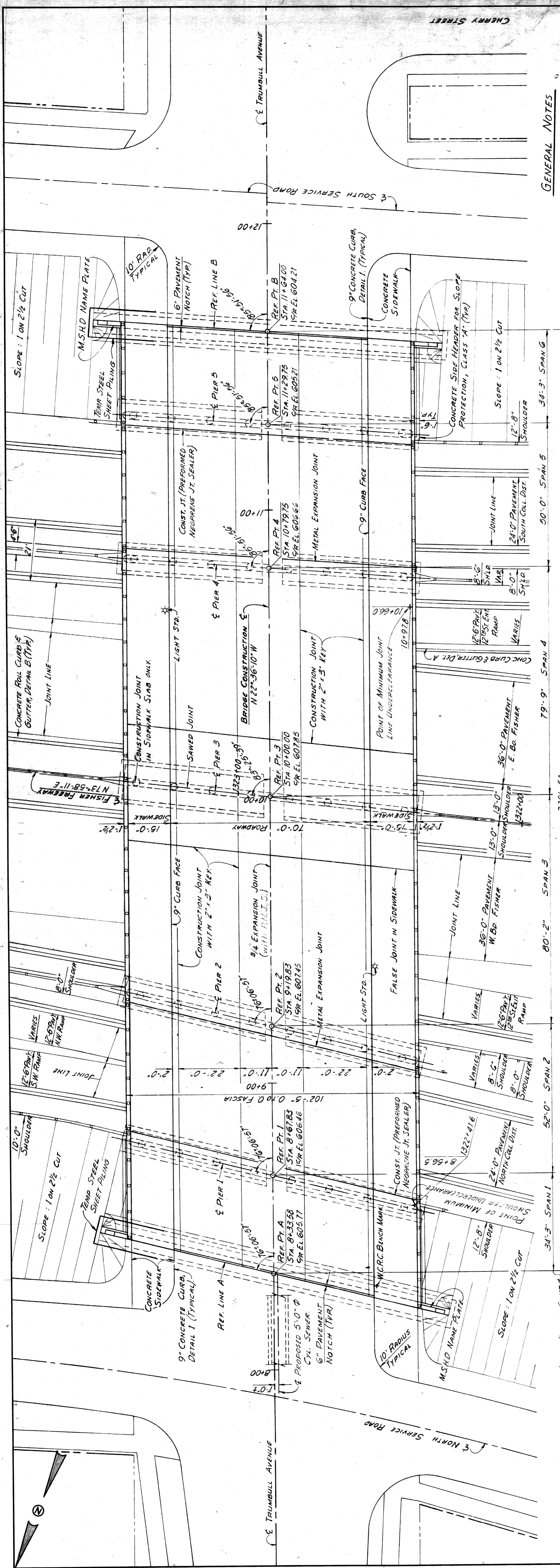
**MICHIGAN DEPARTMENT OF TRANSPORTATION**  
 TRUMBULL AVE OVER I - 75  
 SIDEWALK REPAIR

NO.	REVISIONS	DATE	BY

SCALE: AS SHOWN  
 DRAWN BY: [Signature]  
 CHECKED BY: [Signature]  
 DATE: 01-1-81  
 SHEET: 05 OF 82195

T. E. Miller  
 3-22-26K





**GENERAL NOTES**

THE DESIGN OF THIS STRUCTURE IS BASED ON THE MICHIGAN STATE HIGHWAY DEPARTMENT'S SPECIFICATIONS FOR THE DESIGN OF HIGHWAY BRIDGES, 1958 EDITION AND CURRENT (AASHTO) STANDARD SPECIFICATIONS FOR HIGHWAY BRIDGES HS 20-44. LIVE LOAD PLUS IMPACT DEFLECTION EQUALS 1/1000 OF SPAN LENGTH AND 1/500 OF CANTILEVER ARM.

THE TOP OF ROADWAY SLAB AND TOPS OF SIDEWALKS ARE PARALLEL TO THE VERTICAL CURVES AND TANGENTS GRADED RIRAP AS SLOPE PROTECTION - CLASS A IS NOT TO BE USED ON THIS PROJECT. THE LATERAL LIMITS OF TEMPORARY STEEL SHEET PILING ARE AS REQUIRED AND DETERMINED BY THE ENGINEER. FOR DETAILS OF SLOPE PROTECTION, SEE STANDARD SH.SP.2.

MISCELLANEOUS QUANTITIES		
ITEM	UNIT	AMT.
FOUNDATION DRAIN	LINEAL	255
SLOPE PROTECTION, CLASS A	SQ. YD.	660
SAND-GRAVEL MATERIAL (COMPACTED IN-PLACE)	CU. YD.	1400

PLAN SCALE: 1/16" = 1'-0"

SPAN 5 - SIMPLE SPAN SPAN 6 - SINGLE SPAN ALL BEAMS, ALL SPANS, ALL BEAMS 21" W/84 WITH BOT. COVER 2" ALL BEAMS 21" W/84 COMPARTMENT CONSTRUCTION

SPAN 3 AND 4 - 2 SPAN CONTINUOUS ALL BEAMS 36" W/194 WITH 1/4" COVER AT TOP & BOT. ALL BEAMS 21" W/84 WITH BOT. COVER 2"

SPAN 2 - SIMPLE SPAN SPAN 1 - SIMPLE SPAN ALL BEAMS 21" W/84 WITH BOT. COVER 2" ALL BEAMS 21" W/84 WITH BOT. COVER 2"

ELEVATION TO REFERENCE LINES NORMAL SCALE: 1/16" = 1'-0"

48" SEWER INV. EL. 561.72

PROPOSED 5'-0" CUL. SEWER (SANITARY AND STORM SYPHON) INV. EL. 577.51

MICHIGAN STATE HIGHWAY DEPARTMENT

1-75 FISHER FREEWAY UNDER TRUMBULL AVENUE GENERAL PLAN OF STRUCTURE

PLANS PREPARED BY THE BOARD OF WAYNE COUNTY ROAD COMMISSIONERS

REVISIONS