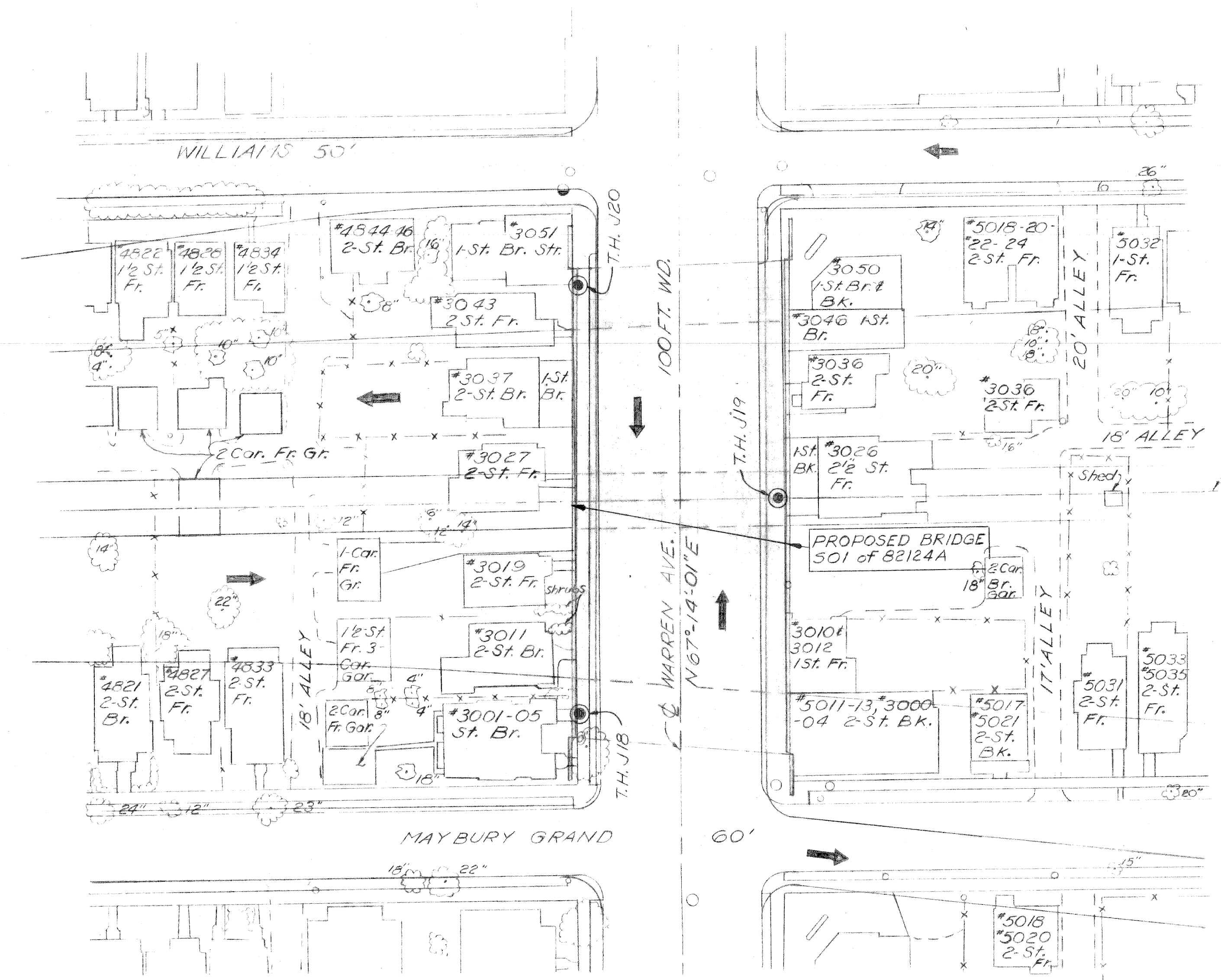


UTILITY LEGEND

- Sewer Inlet or Catchbasin
- Sewer Manhole
- ⊕ Water Gate Well & Valve
- P.L.C. Manhole
- ⊙ Det. Edison Co. Manhole
- ⊖ M.B.T. Manhole
- ⊙ D.F.D. Manhole
- D.S.R. Pole
- ⊖ M.B.T. Pole
- ★ Traffic Signal
- ⊕ D.F.D. Alarm Box
- Fire Hydrant
- D.E. Pole
- ⊙ P.L.C. Lightpole
- ⊕ Police Box
- ⊗ Traffic Signal Box
- ⊕ D.E. Manhole (Steam)
- ⊙ Test Hole for Soil Profile
- Tree
- x-x- Fence



SURVEY PLAN
Scale: 1" = 40'

GENERAL NOTES:

The work covered by these plans includes construction of the proposed bridge and placing slope protection to the limits shown. All other work is included in the Road Plans which are a part of this contract.

Removal of fences and buildings is not part of this contract.

The contractor shall locate all active underground utilities prior to starting work, and shall conduct his operations in such a manner as to insure that those utilities not requiring relocation will not be disturbed.

Warren Ave. traffic is to be detoured over the temporary road for Stage I. (See Road Plans)

Datum refers to City of Detroit datum.
Topography shown hereon represents conditions existing at the time the field survey was made. However, these conditions may have been materially altered by the operations of others before the work has been started.

PRELIMINARY PLAN "A" DATED 1-22-68
LETTING DATE: JANUARY 1969

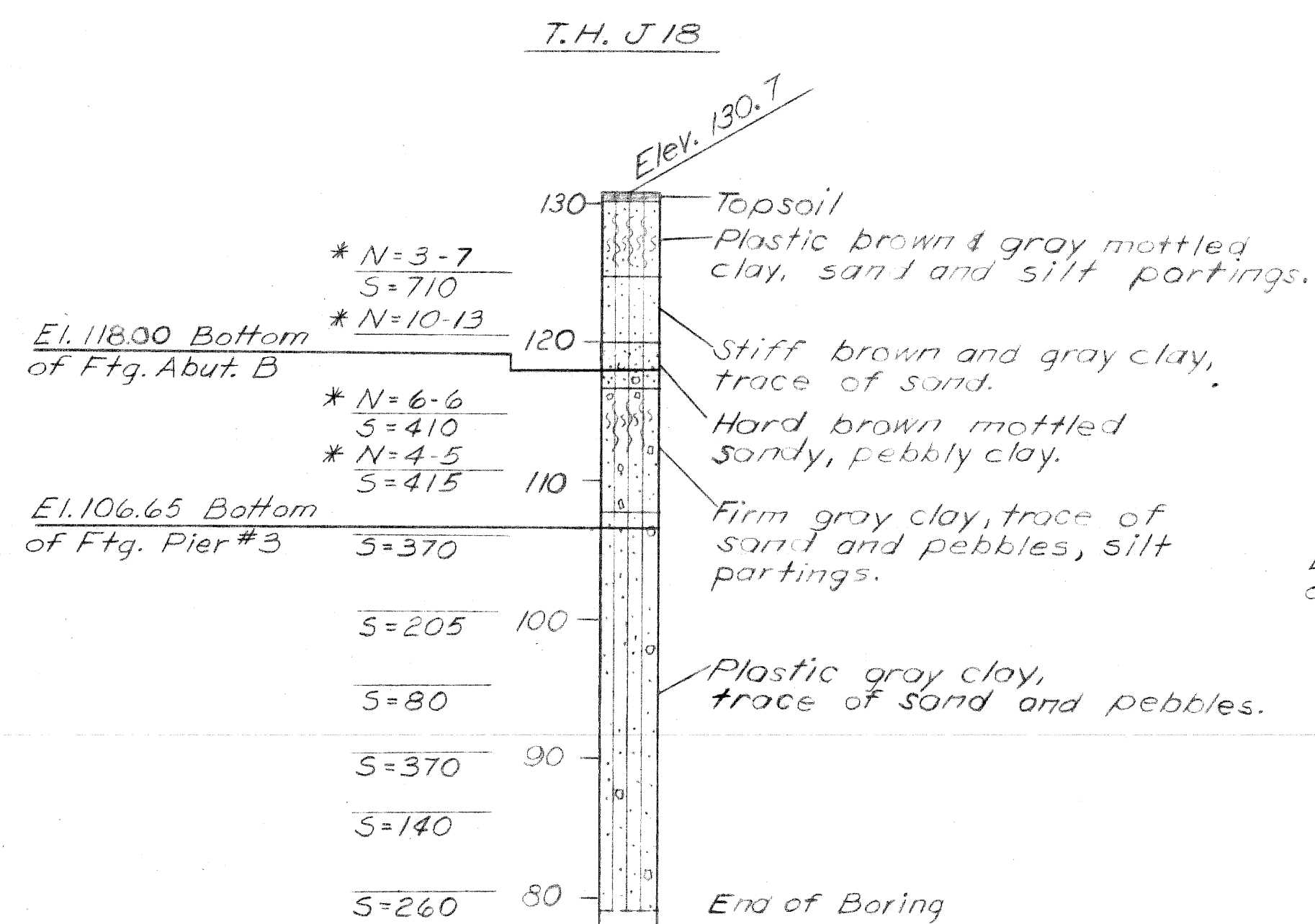
Work this sheet with sheet Nos. 3 thru 7

MDSH Prelim. Review Set. Rec'd 2/2/68 No letter 1c.

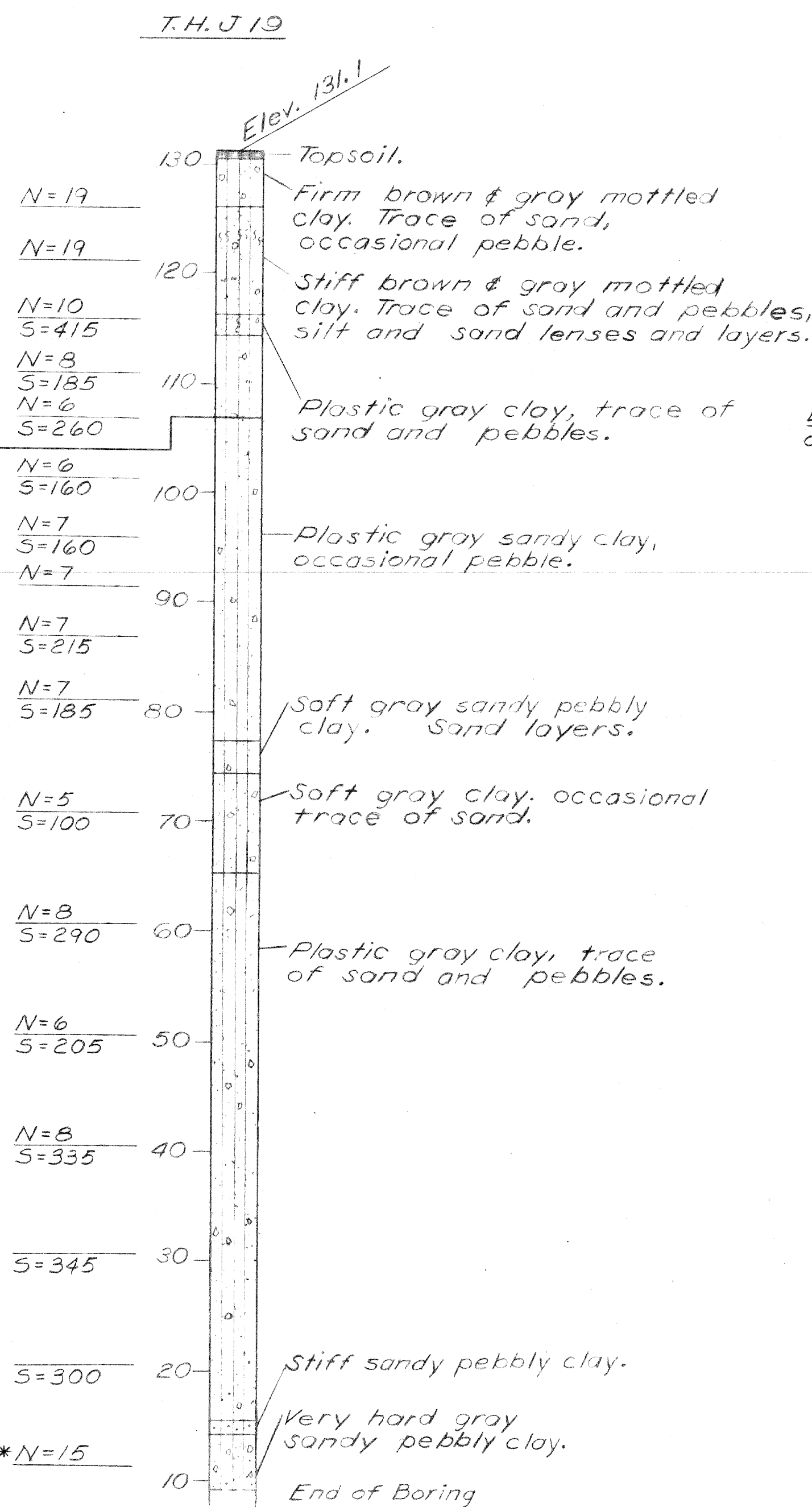
REVIEW COMMENT ON SH. 5

CITY OF DETROIT DEPARTMENT OF PUBLIC WORKS ENGINEERING DIVISION APPROVED: _____ STRUCTURAL ENGINEER	MICHIGAN STATE HIGHWAY DEPARTMENT WARREN AVE. CROSSING THE JEFFRIES FREEWAY IN DETROIT GENERAL PLAN OF SITE JOB No. _____ PW 070011	SQUAD BOSS <i>A. Freiberg 3-66</i> DRAWN BY <i>J.A.S. 1-66</i> TRACED BY <i>J.A.S. 1-66</i> CHECKED BY <i>A.E. 3-66</i> SHEET 2 OF 7 SOI of 82124A																
REVISIONS <table border="1" style="width: 100%; border-collapse: collapse;"> <thead> <tr> <th style="width: 5%;">NO.</th> <th style="width: 65%;">DESCRIPTION</th> <th style="width: 15%;">DATE</th> <th style="width: 15%;">BY</th> </tr> </thead> <tbody> <tr><td> </td><td> </td><td> </td><td> </td></tr> <tr><td> </td><td> </td><td> </td><td> </td></tr> <tr><td> </td><td> </td><td> </td><td> </td></tr> </tbody> </table>		NO.	DESCRIPTION	DATE	BY													APPROVED _____ DESIGN SUPERVISING ENGINEER APPROVED _____ ASS'T. ENGINEER OF DESIGN
NO.	DESCRIPTION	DATE	BY															

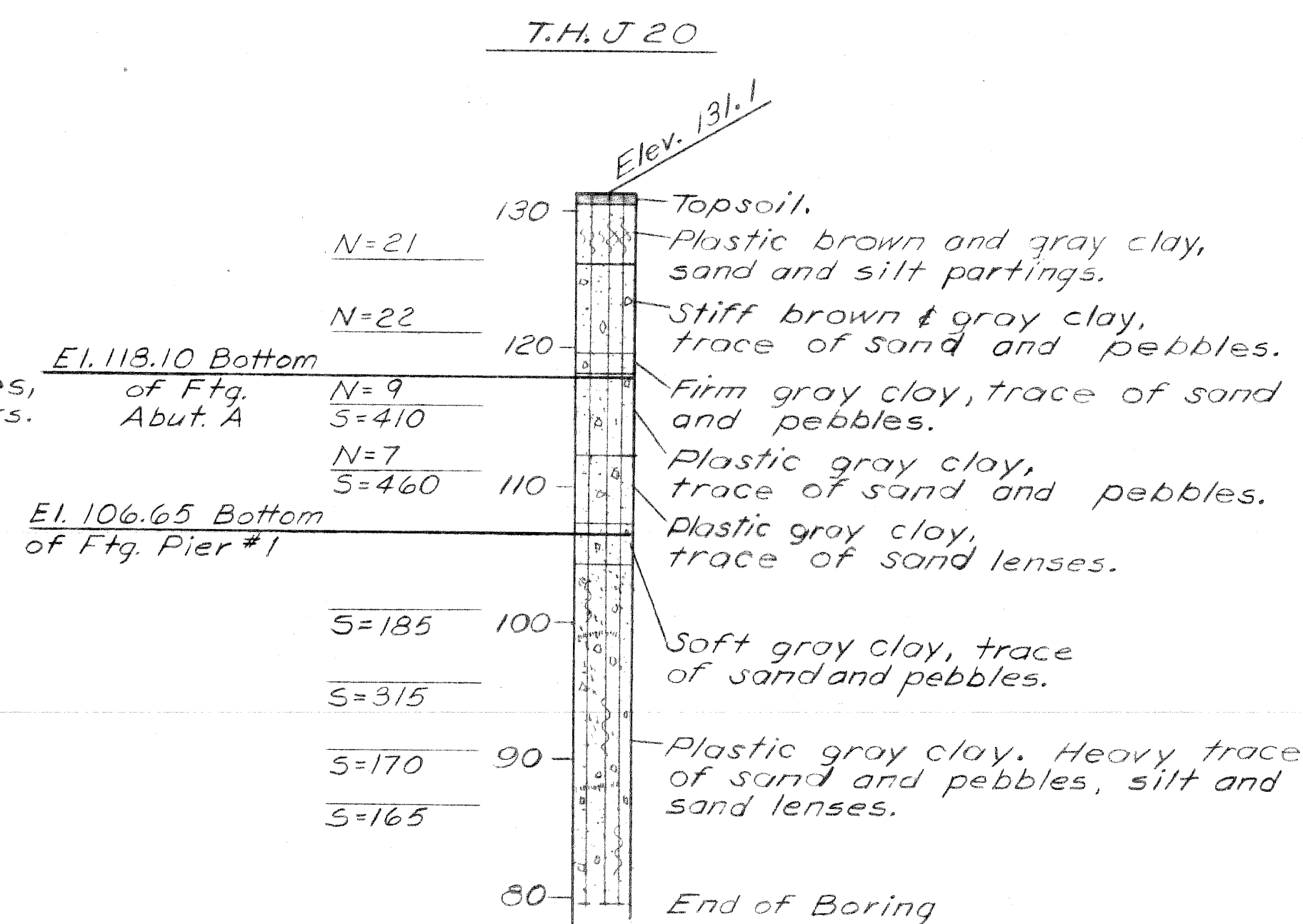
LOG OF SOIL BORINGS



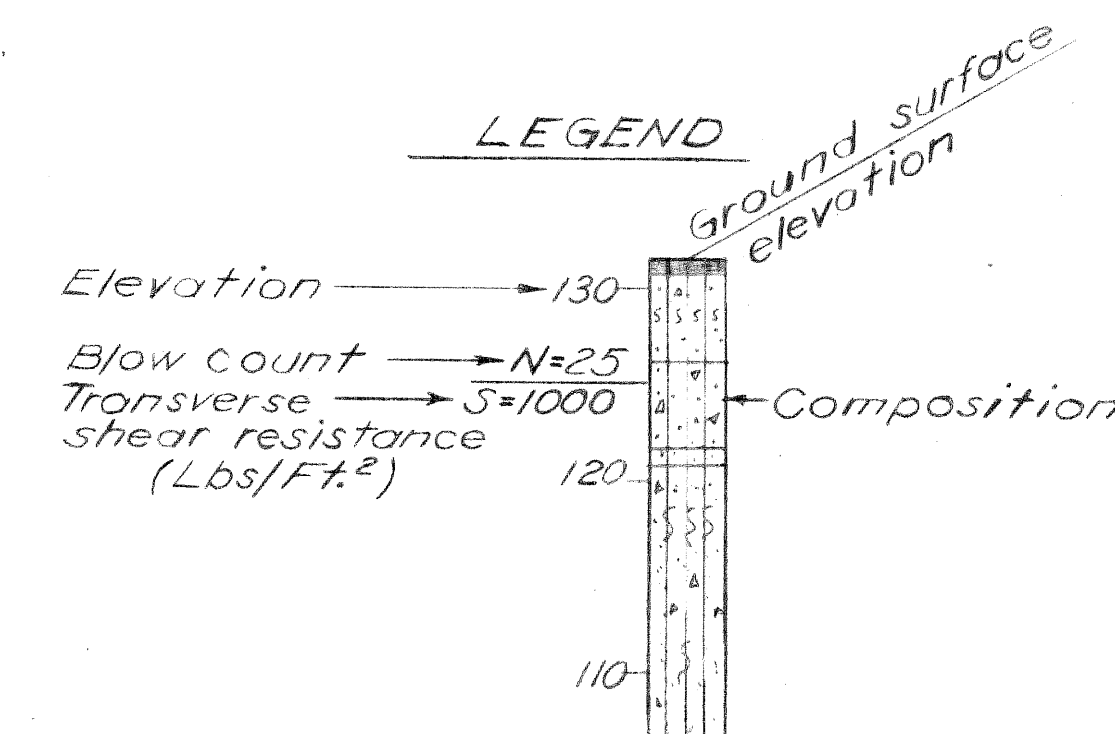
* Core Sampler driven 6"-6".



* Core Sampler driven 4".



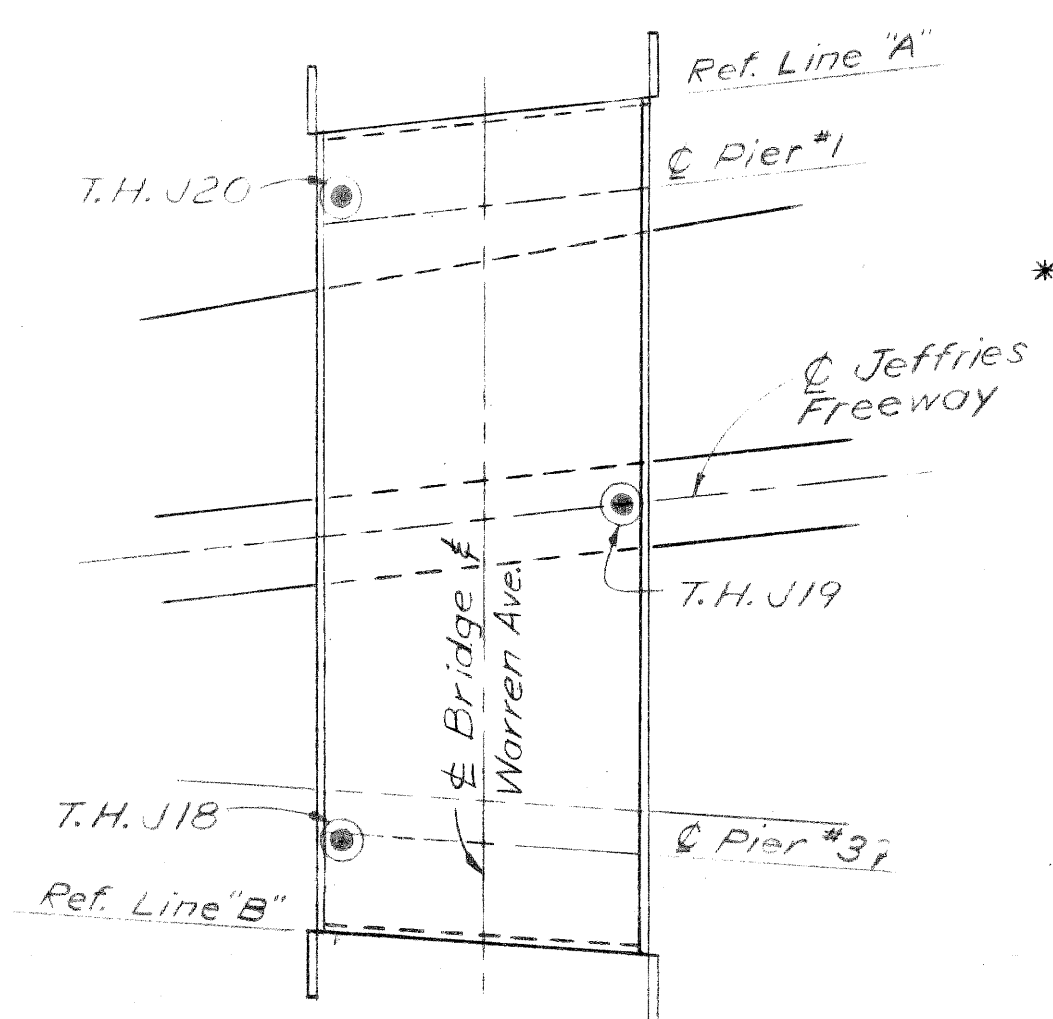
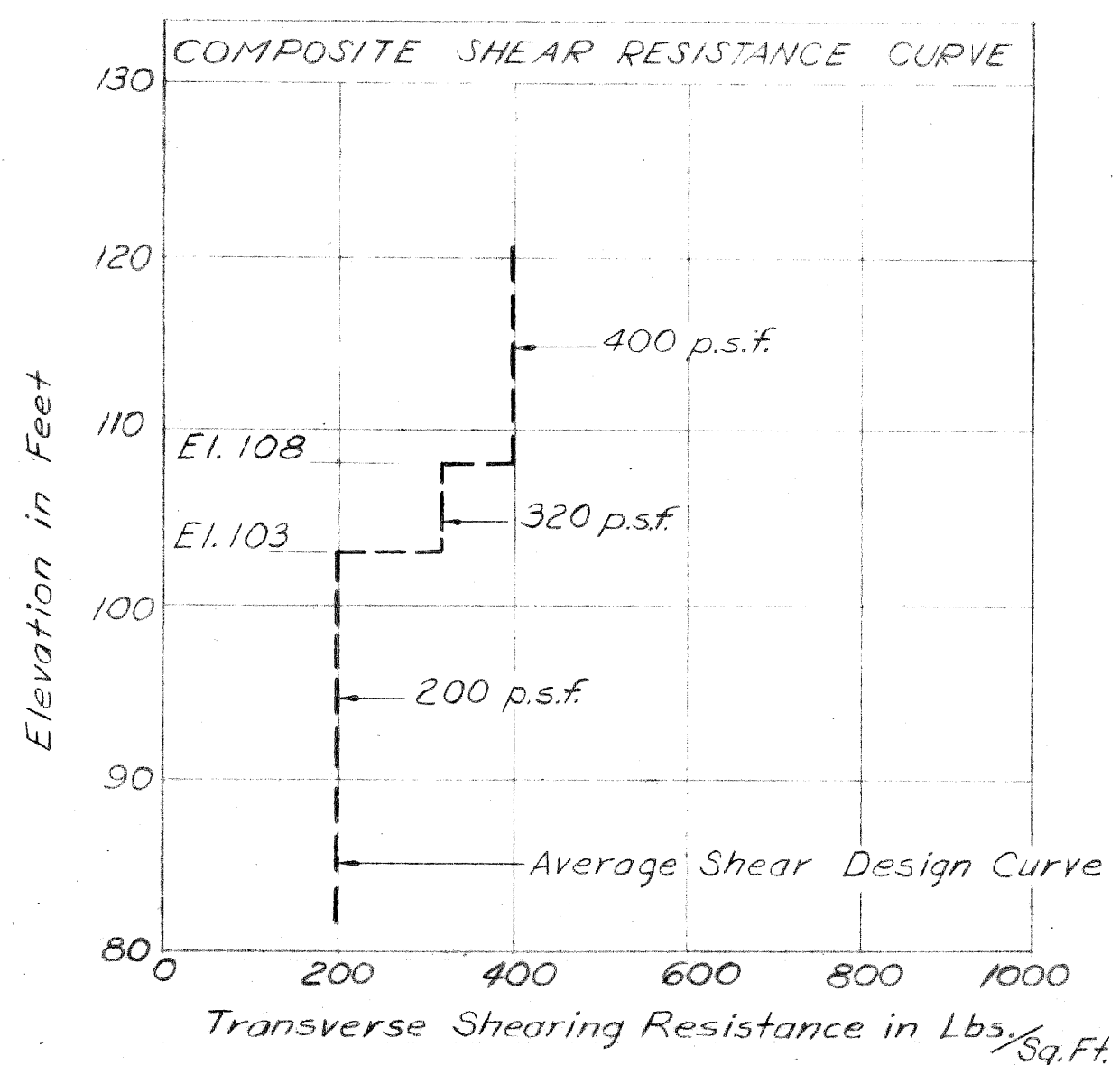
LEGEND



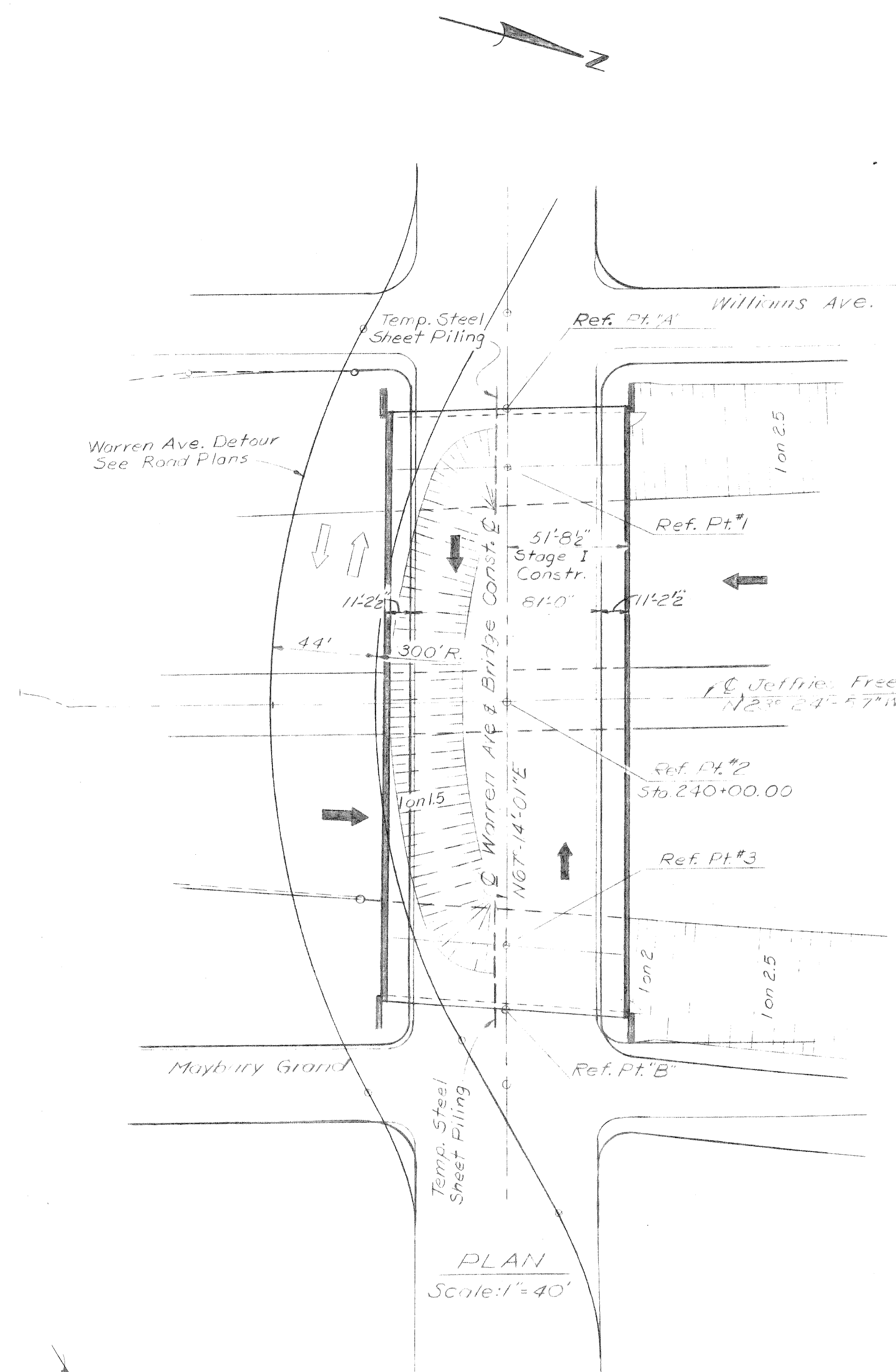
NOTES:

N Indicates the number of blows required to drive a sampler 12" (or as indicated) using a 140# hammer falling 30". Where blow count is not shown sampler was either pushed, hand driven, or levered.
S Indicates Transverse Shearing Resistance in Lbs. per sq. ft. as determined by M.S.H.D. Standard Test.
All elevations are based on City of Detroit Datum.

PRELIMINARY PLAN "A" DATED 1-22-68



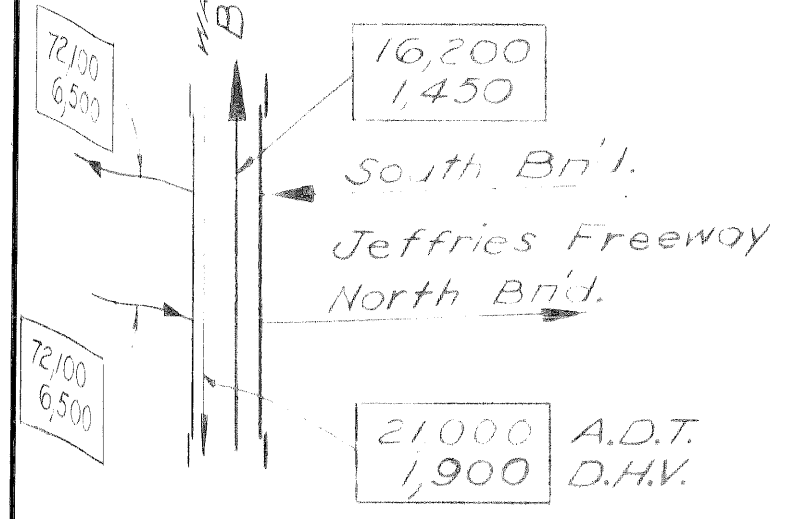
PLANS PREPARED BY CITY OF DETROIT DEPARTMENT OF PUBLIC WORKS CIVIL ENGINEERS' OFFICE BUREAU OF HIGHWAYS AND EXPRESSWAYS		MICHIGAN STATE HIGHWAY DEPARTMENT WARREN AVE. CROSSING THE JEFFRIES FREEWAY IN DETROIT	
APPROVED: _____ STRUCTURAL ENGINEER		JOB NO. _____ FW 3330	
REVISIONS			
NO.	DESCRIPTION	DATE	BY
APPROVED: _____ DESIGN SUPERVISING ENGINEER		APPROVED: _____ ASST. ENGINEER OF DESIGN	
SQUAD BOSS: A. Freiberg 3-66 DRAWN BY: J. Such 1-66 CHECKED BY: DJR 2-66 SHEET 3 OF 7		SOI of 82124A	



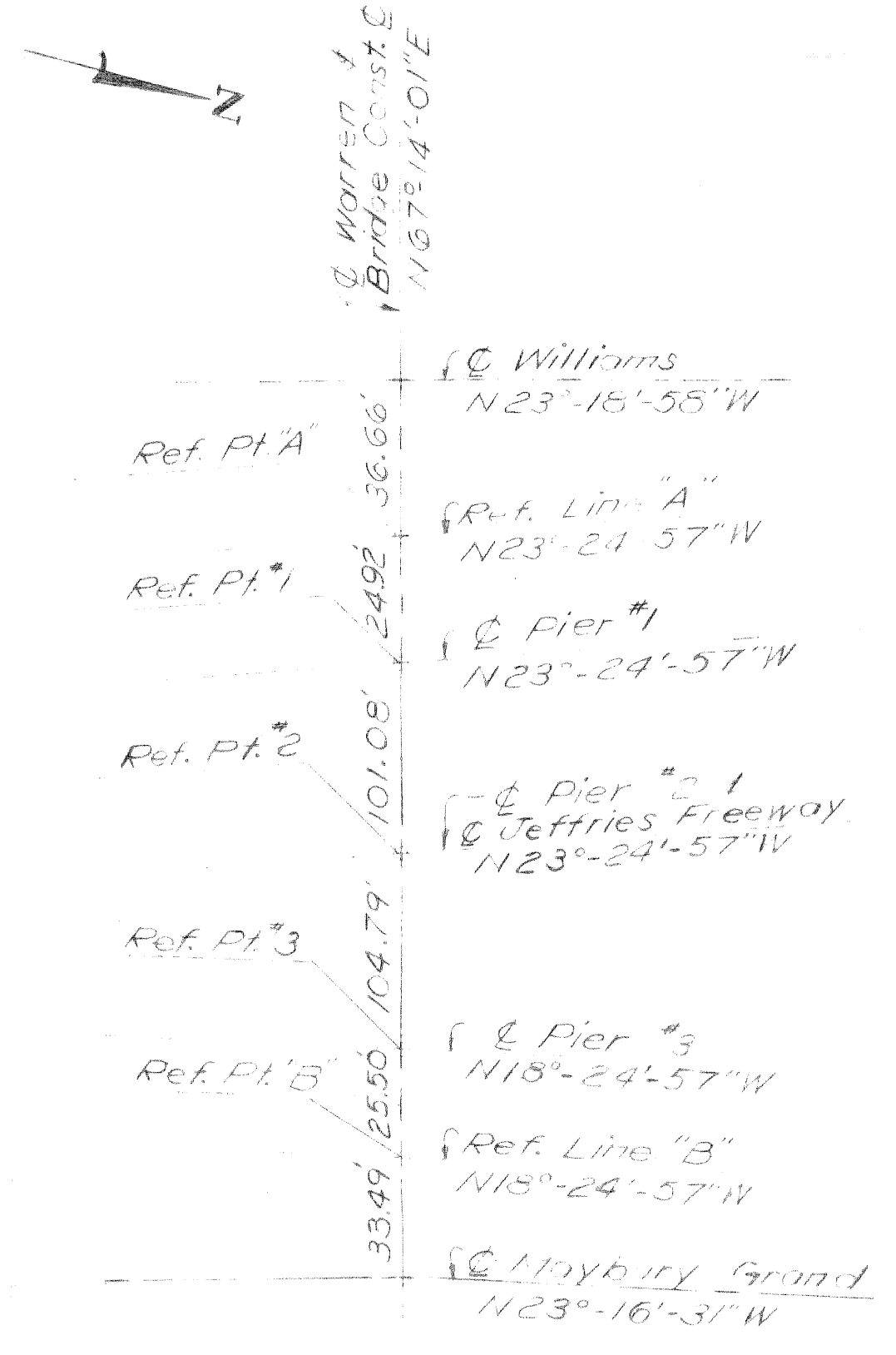
PLAN
Scale: 1"=40'

CURVE DATA

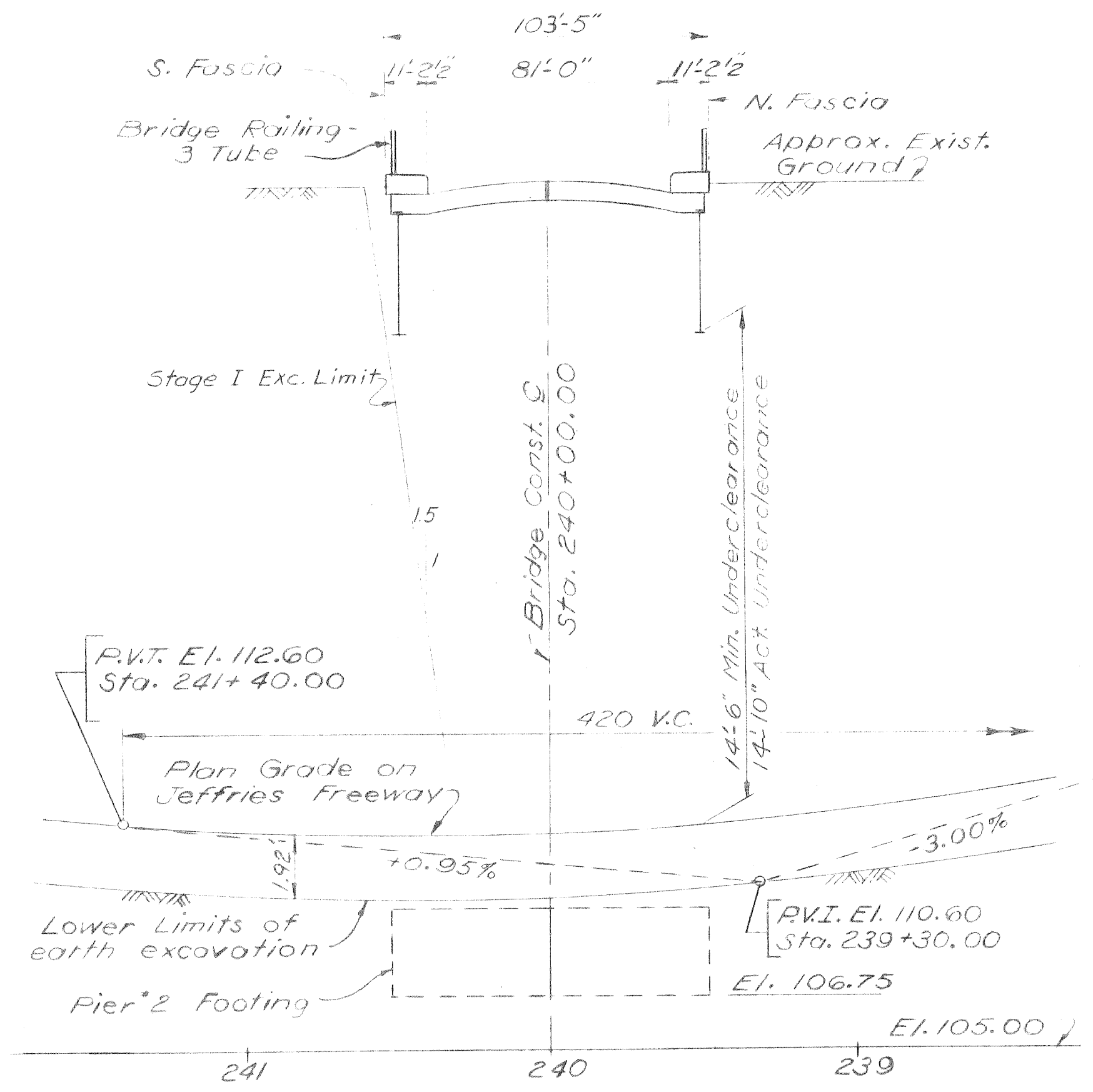
CURVE IN W	WARREN ENT. RAMP CURVE 1
$\Delta = 5^{\circ}-00'-00''$	$\Delta = 7^{\circ}-00'-00''$
$D = 2^{\circ}-00'-00''$	$D = 5^{\circ}-00'-00''$
$R = 2864.79'$	$R = 1145.92'$
$T = 125.05'$	$T = 70.09'$
$L = 250.00'$	$L = 140.00'$
$E = 2.73'$	$E = 2.14'$
$P.C. = 4+28.25$	$P.C. = 240+61.81$
$P.I. = 5+53.93$	$P.I. = 241+31.20$
$P.T. = 6+78.85$	$P.T. = 242+01.81$



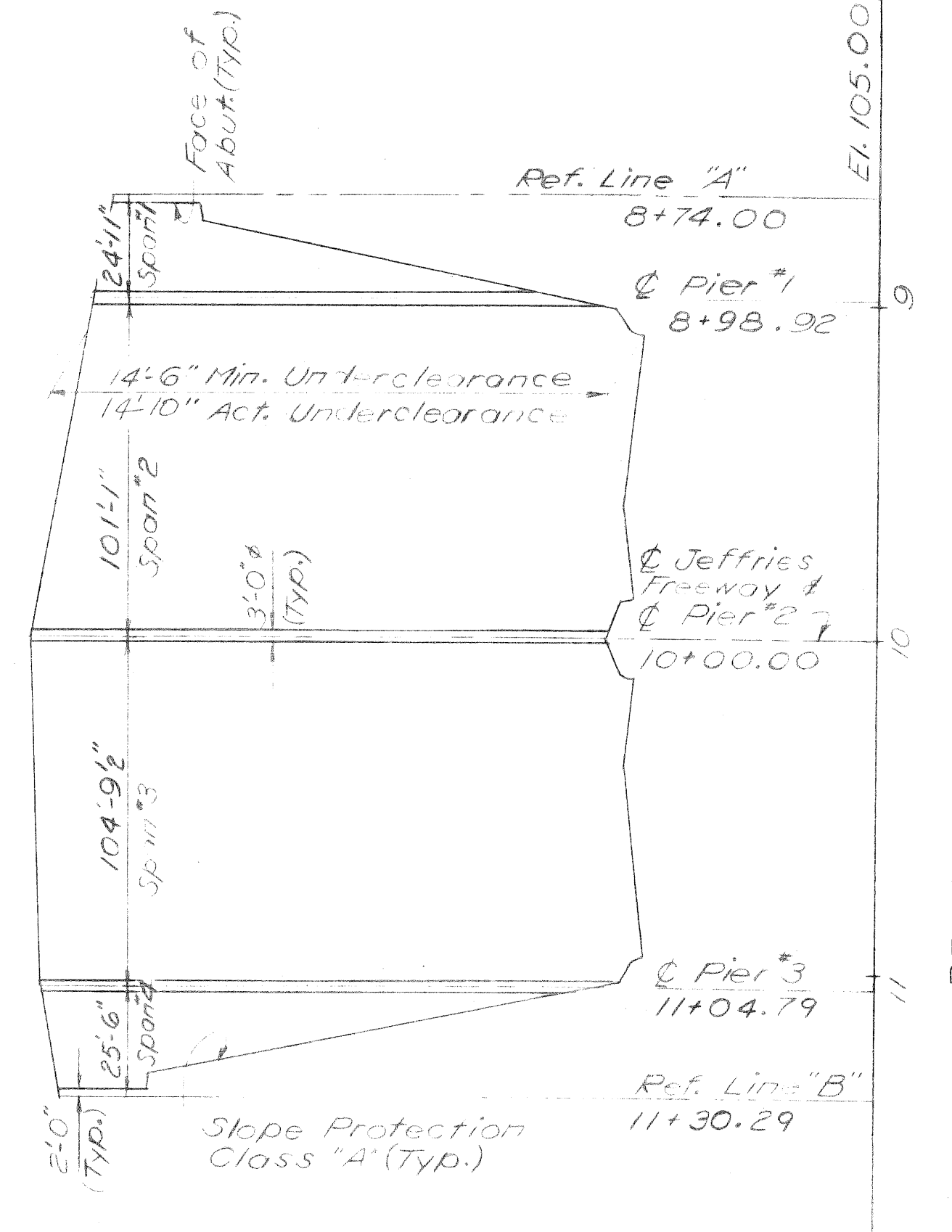
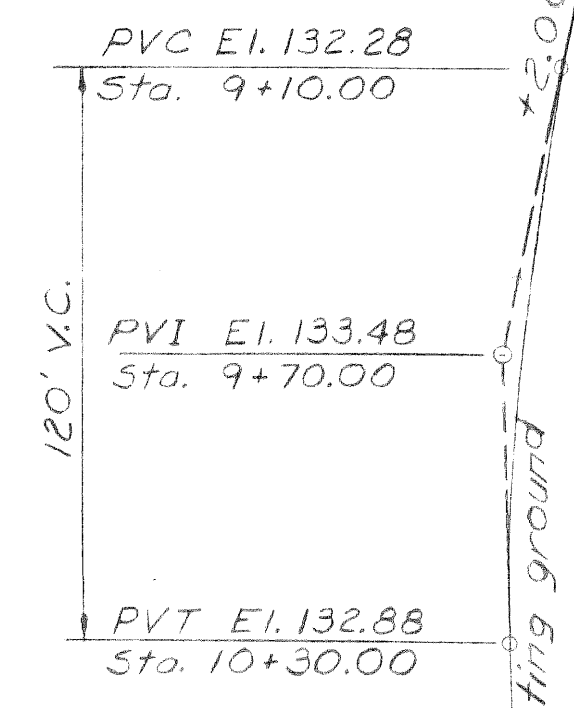
TRAFFIC COUNTS
Estimated Traffic - 1990



ALIGNMENT DIAGRAM
No Scale



PROFILE ALONG \odot JEFFRIES FREEWAY
Scale: Horiz.: 1"=40'
Vert.: 1"=4'



PROFILE ON BRIDGE CONST. \odot
Scale: Horiz.: 1"=40'
Vert.: 1"=4'

CONSTRUCTION BENCH MARKS

- C.B.M. 21 Arrow on hydrant E. Side of Maybury Grand, 78' south of Hancock El. 132.04
- C.B.M. 22 Arrow on hydrant S.E. corner Tillman and Warren El. 131.78
- C.B.M. 23 Arrow on hydrant S.E. corner Warren and Maybury Grand, El. 134.29

NOTES:

- C.B.M. Denotes construction bench mark.
- O Denotes Reference Point or point of intersection.

PRELIMINARY PLAN "A" DATED 1-22-68
Work this sheet with sheet No. 5

REVISIONS			
NO.	DESCRIPTION	DATE	BY

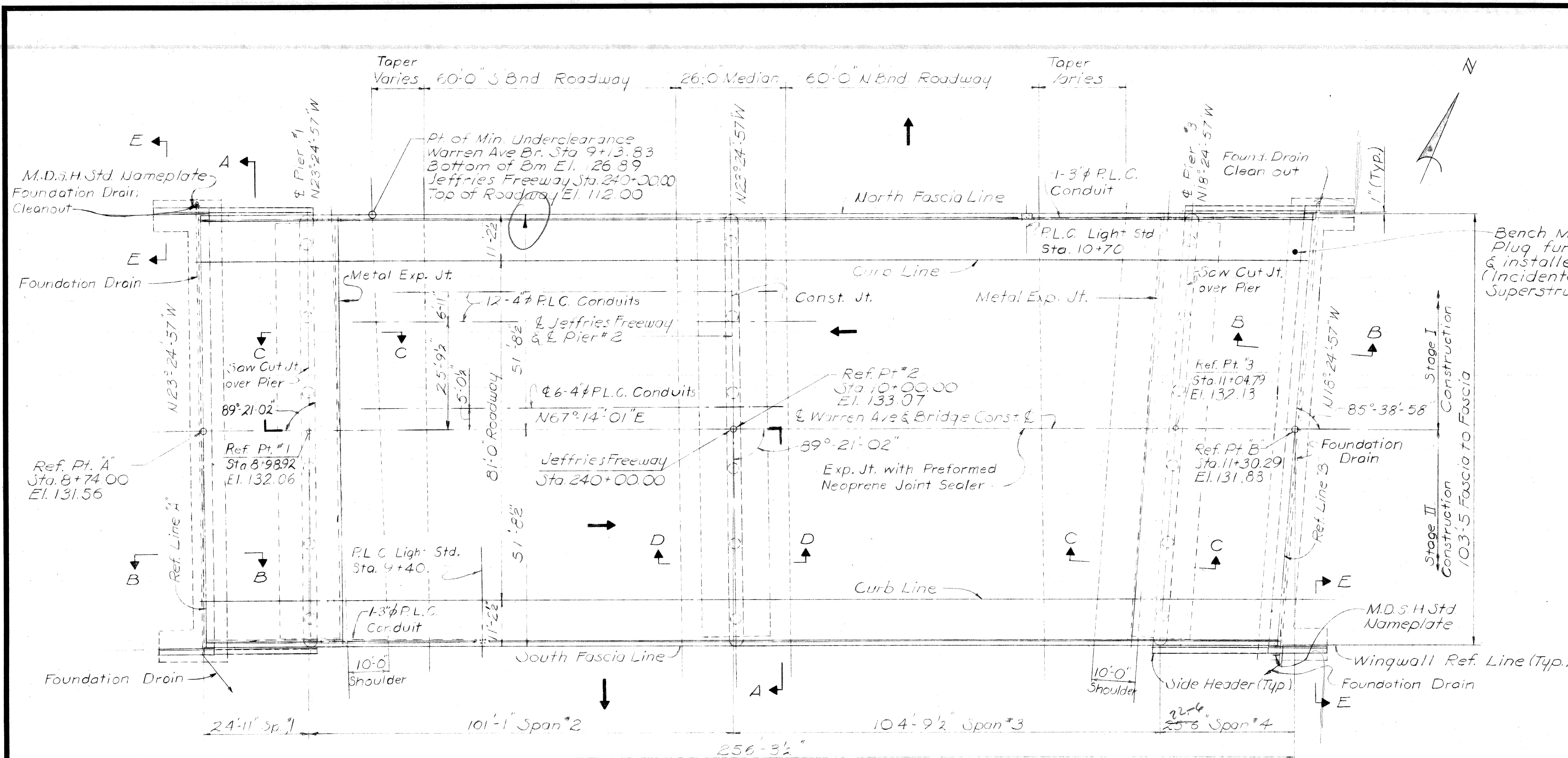
MICHIGAN STATE HIGHWAY DEPARTMENT

WARREN AVE. CROSSING THE
JEFFRIES FREEWAY IN DETROIT

GENERAL DRAWING

APPROVED _____ DESIGN SUPERVISING ENGINEER
APPROVED _____ ASST. ENGINEER OF DESIGN

SQUAD BOSS	A. Fryling	3-66
DRAWN BY	J.A.S.	3-66
TRACED BY	J.A.S.	3-66
CHECKED BY	AE	3-66
SHEET 4 OF 7		
SOI of 82124A		



GENERAL NOTES

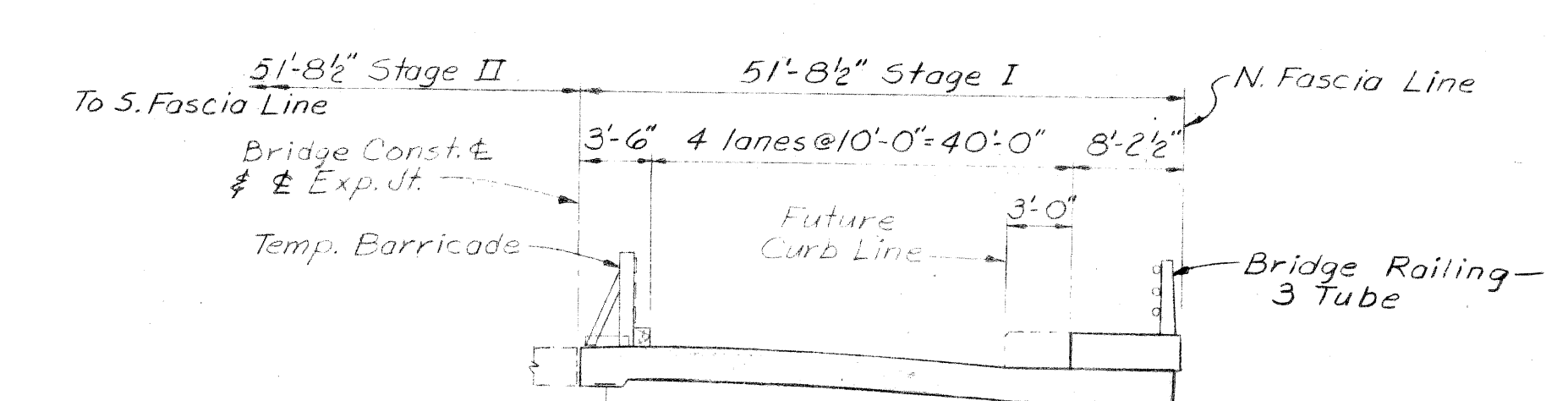
The design of this structure is based on the MSHD Standard Specifications for the Design of Highway Bridges - 1958 Edition and current AASHTO standard Specifications for Highway Bridges, HS20-44 Loading. Live load plus impact deflection = 1/1000 of span length & 1/350 of Cantilever Arm.

Top of roadway slab and tops of curbs are parallel to the vertical curve and/or tangents.

Tamped Clay is incidental to unclassified excavation.

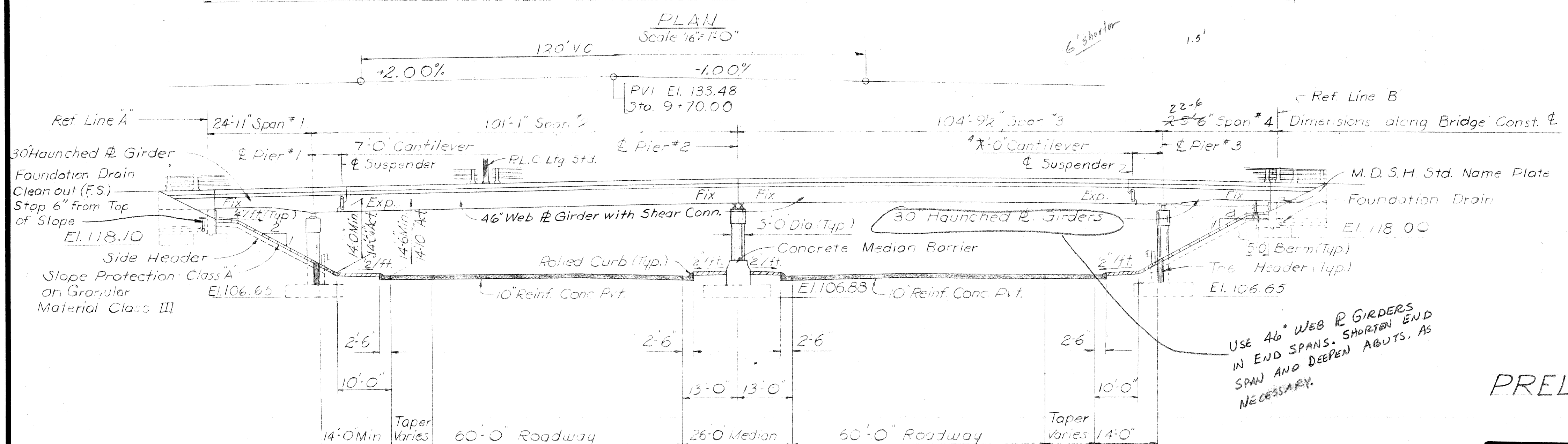
Structural steel is A441 Modified.

For details of Slope Protection Class A, See Standard Sheet SP2.



CONSTRUCTION SEQUENCE
No scale

FOOTING PRESSURE p.s.f.				
	Average D.L.	Allowable R=1.0	Maximum D.L.+L.L.	Allowable R=1.5
Abutments	1250	3250	2450	4550
Piers	2000	2100	2500	2600
Wingwalls	1550	3250	3100	4550



ELEVATION
Scale 1/8"=1'-0"

MISCELLANEOUS QUANTITIES		
Item	Amount	Unit
Slope Protection - Class A		Sq. Yds.
Slope Protection - Header		Lin. Ft.
Foundation Drain		Lin. Ft.

USE 46" WEB R GIRDERS IN END SPANS. SHORTEN END SPAN AND DEEPEN ABUTS. AS NECESSARY.

PRELIMINARY PLAN "A" DATED 1-22-68

Work this sheet with sheet Nos. 4, 6 & 7

DESIGNED BY CITY OF DETROIT DEPARTMENT OF PUBLIC WORKS DIVISION OF HIGHWAYS AND EXPRESSWAYS APPROVED: STRUCTURAL ENGINEER (PW 59011)		MICHIGAN STATE HIGHWAY DEPARTMENT WARREN AVE. CROSSING THE JEFFRIES FREEWAY IN DETROIT GENERAL PLAN OF STRUCTURE	
JOB No. APPROVED: DESIGN SUPERVISING ENGINEER		SHEET 5 OF 7 SOI of 82124A	
REVISIONS NO. DESCRIPTION DATE BY			

GENERAL PLAN OF STRUCTURE
WARREN AVE. CROSSING THE
JEFFRIES FREEWAY IN DETROIT
 MICHIGAN STATE HIGHWAY DEPARTMENT

APPROVED: _____
 DESIGN SUPERVISING ENGINEER

APPROVED: _____
 ASST. ENGINEER OF DESIGN

NO. _____
 DESCRIPTION _____
 DATE BY _____

APPROVED: _____
 STRUCTURAL ENGINEER

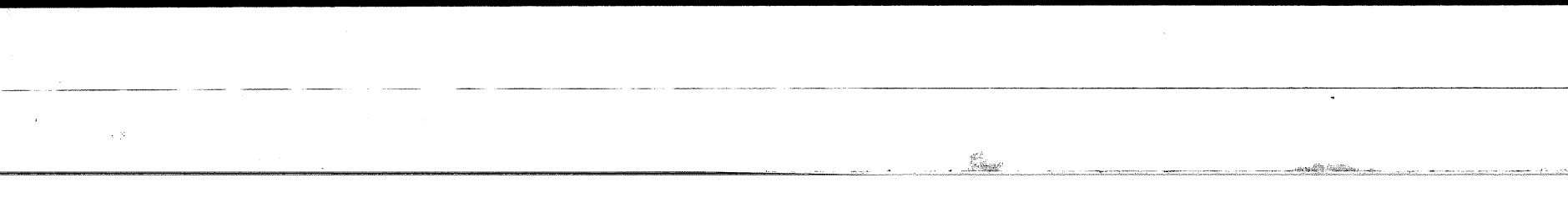
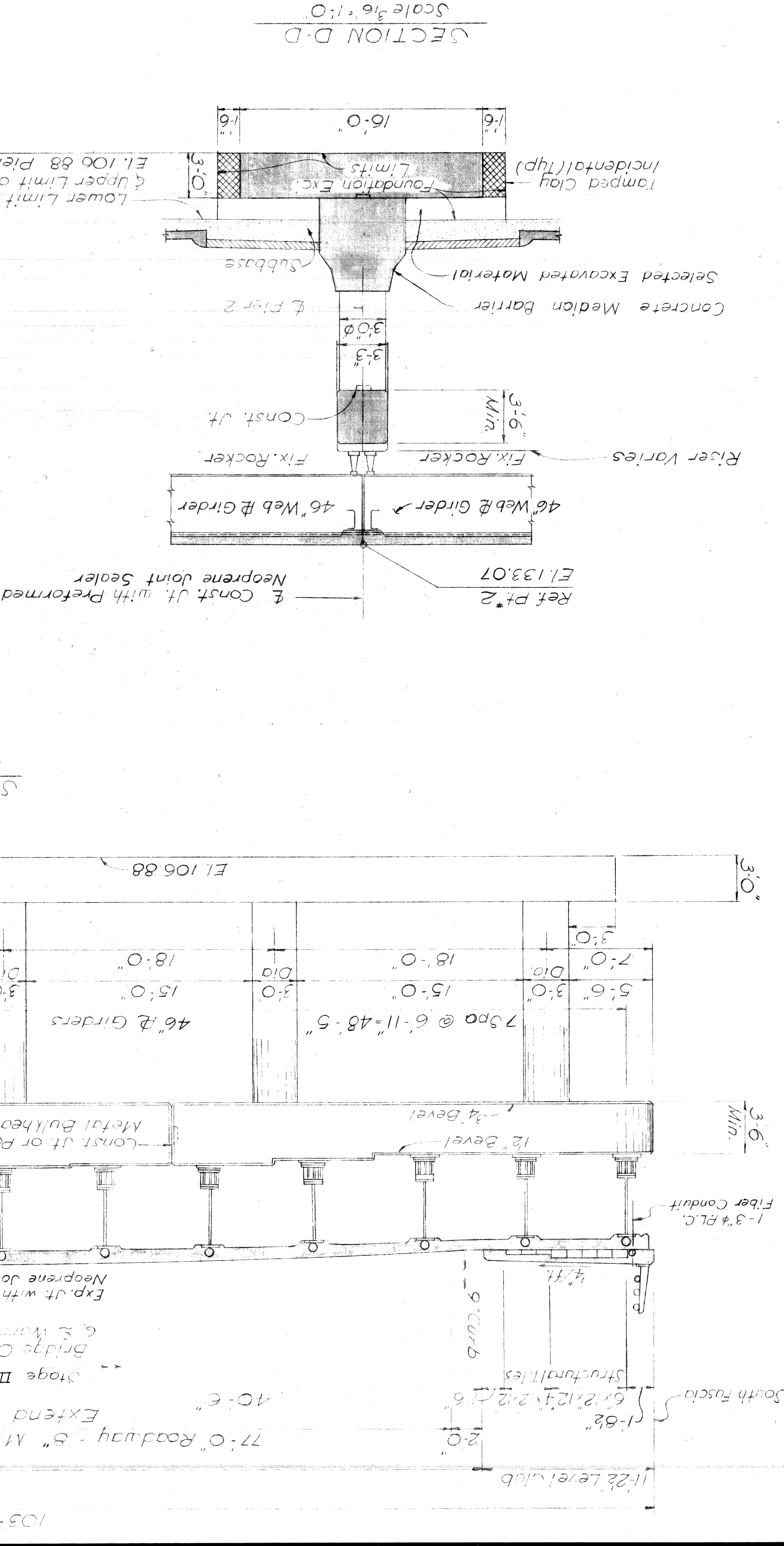
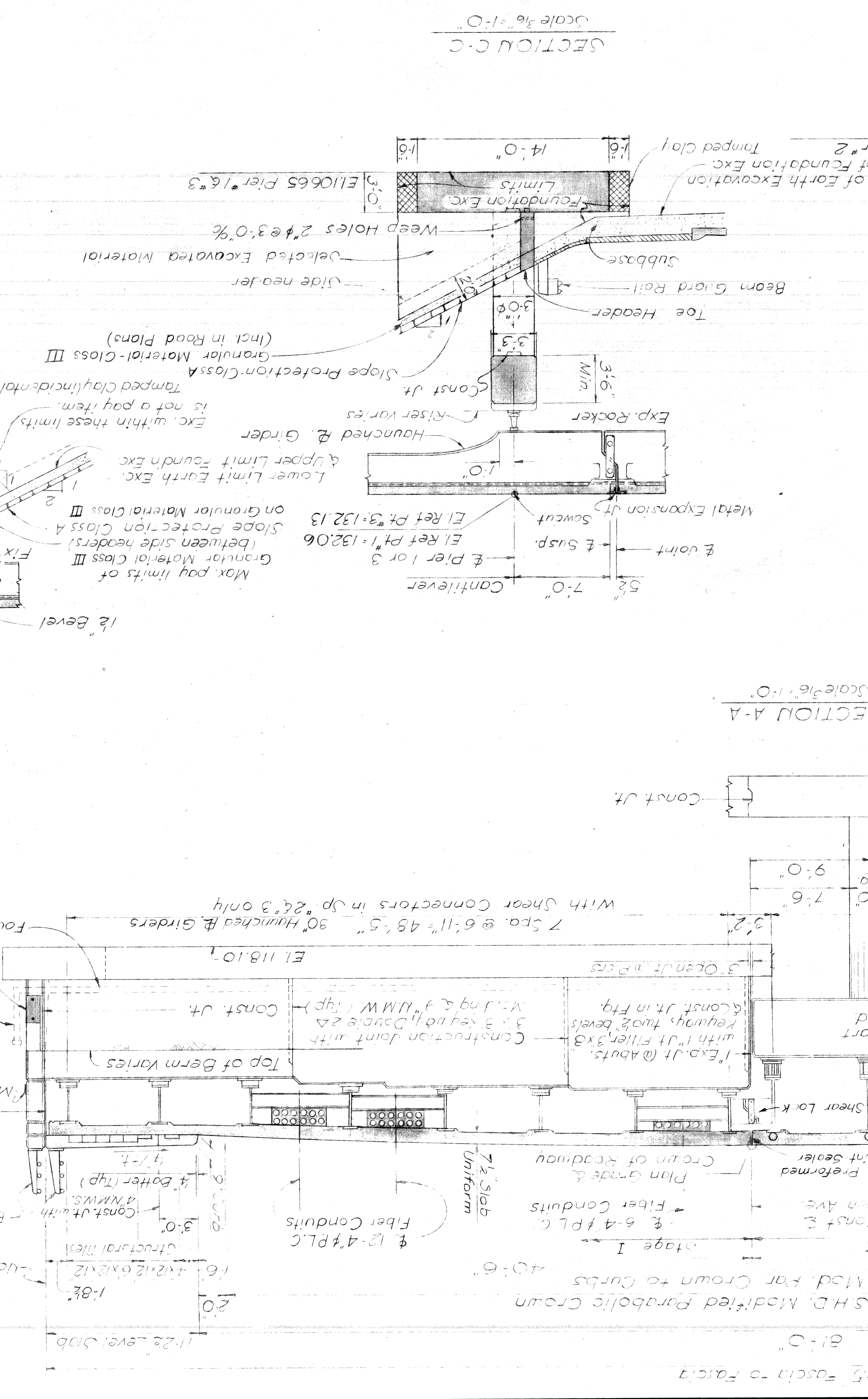
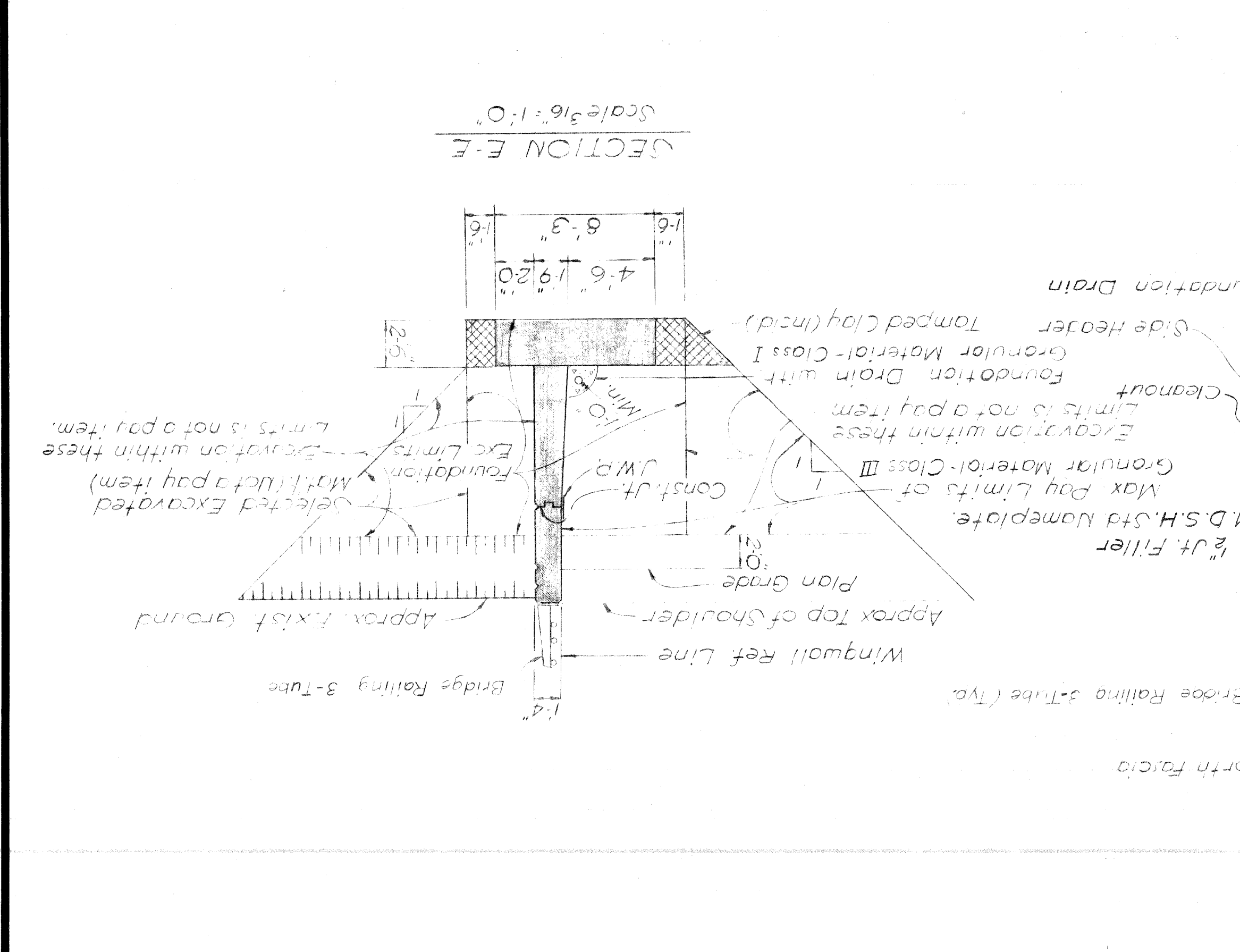
JOB No. _____
 PM 9901A

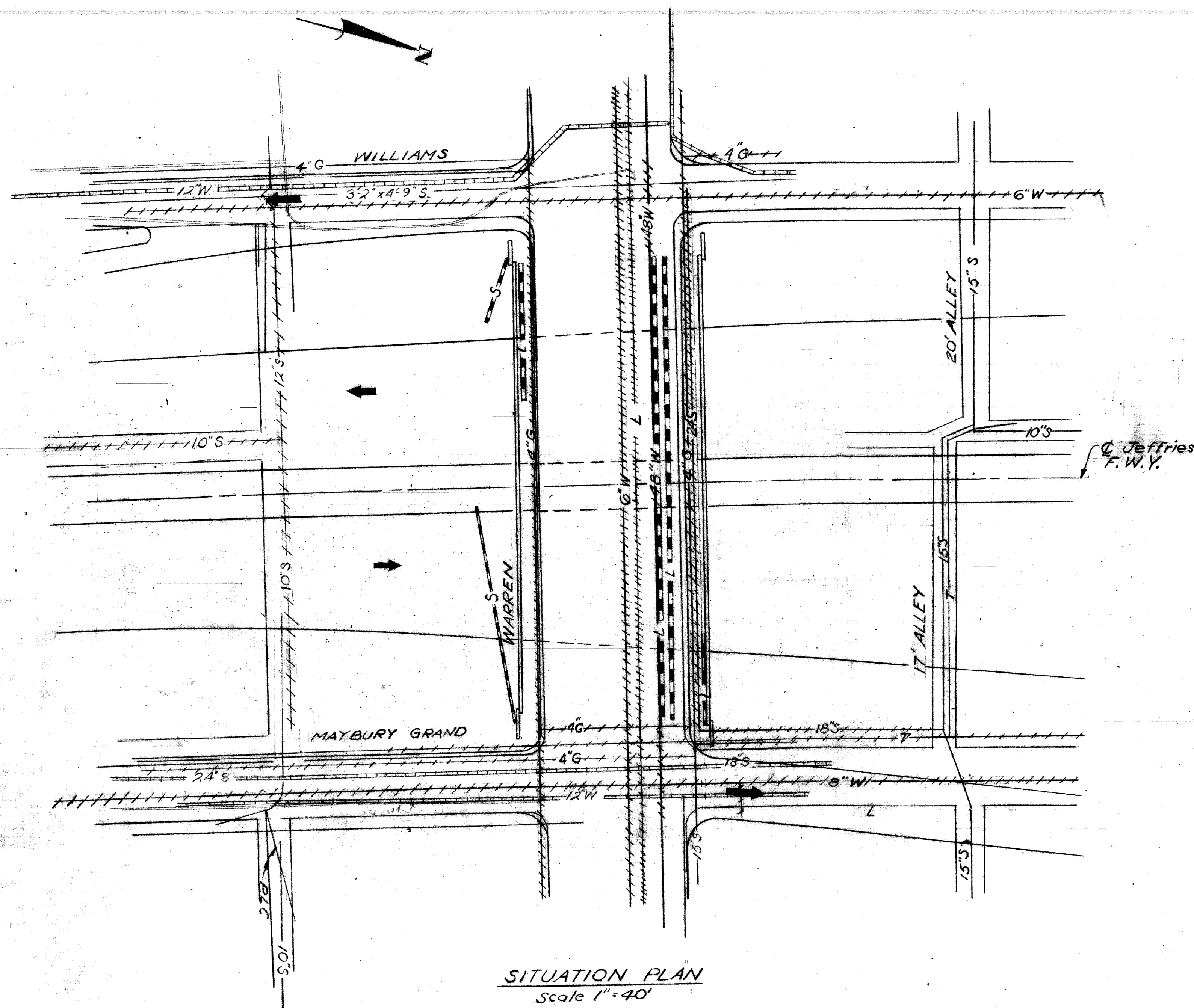
PLANS PREPARED BY _____
 CITY OF DETROIT
 DEPARTMENT OF PUBLIC WORKS
 CITY ENGINEERS OFFICE
 BUREAU OF HIGHWAYS AND EXPRESSWAYS

CHECKED BY: H. Feylora 2/66
 DRAWN BY: Roberts 2/66
 SQUARE ROSS: A. Frylund 3/66
 SHEET 6 OF 7
 SOI of 82124A

PRELIMINARY PLAN "A" DATED 1-22-68
 Work this sheet with sheet No. 5

Notes:
 Tamped Clay and Selected Excavation Material are incidental to Unclassified Excavation.
 Granular Material Class I incidental to Foundation Drain.
 Granular Material Class III is billed on Road Plans





UTILITY

LEGEND

- PUBLIC LIGHTING COMMISSION
- DETROIT WATER DEPT.
- EXPWY & CITY OF DETROIT SEWERS
- MICH. CONSOL. GAS CO.
- MICH. BELL TELEPHONE CO.
- DETROIT EDISON CO.
- DETROIT FIRE DEPT.

EXISTING	DESIGNATION		NEW WORK BY CONTRACTOR
	DELETE OR ABANDON	NEW WORK BY OTHERS	
—L—	++L++	▬L▬	▬L▬
—W—	++W++	▬W▬	▬W▬
—S—	++S++	▬S▬	▬S▬
—G—	++G++		
—T—	++T++		
—E—	++E++		
—F—	++F++		

PRELIMINARY PLAN A DATED 1-22-68

PLANS PREPARED BY
CITY OF DETROIT
DEPARTMENT OF PUBLIC WORKS
CITY ENGINEERS OFFICE
BUREAU OF HIGHWAYS AND EXPRESSWAYS

APPROVED _____
STRUCTURAL ENGINEER

JOB No.
PW 990(1)

MICHIGAN STATE HIGHWAY DEPARTMENT

WARREN AVE. CROSSING THE
JEFFRIES FREEWAY IN DETROIT
**EXISTING UTILITIES AND
PROPOSED ALTERATIONS**

NO.	DESCRIPTION	DATE	BY

CITY OF DETROIT
SQUAD BOSS *H. Friberg* 3-66
DRAWN BY *J.A.S.* 2-66
TRACED BY *J.A.S.* 2-66
CHECKED BY *A.E.* 3-66
SHEET 7 of 7
SOI of 82124A