

DATE	BY
DESIGNED	W. J. FRISVOLD
CHECKED	W. J. FRISVOLD
APPROVED	W. J. FRISVOLD
DATE	BY
DESIGNED	W. J. FRISVOLD
CHECKED	W. J. FRISVOLD
APPROVED	W. J. FRISVOLD

Station	Conc. Pavement 8" Unif. Sa. Yds.	Conc. Pavement 7" Unif. Sa. Yds.
34+75	58	20
34+85.4	22.5	
35+70.4	22.5	21.7
37+95.1		17.8
Total	103.0	59.5

Remove Asphalt surface shown cross hatched to provide for a smooth connection and to adjust crown. Replace with Bituminous Concrete Pavement. 199.7 - 209.5 Sa Yds. Removing Asphalt Surface. 89.85 - 109.75 Tons Bituminous Concrete Wearing course. 23.85 - 109.75 Tons Bituminous Concrete Leveling course.

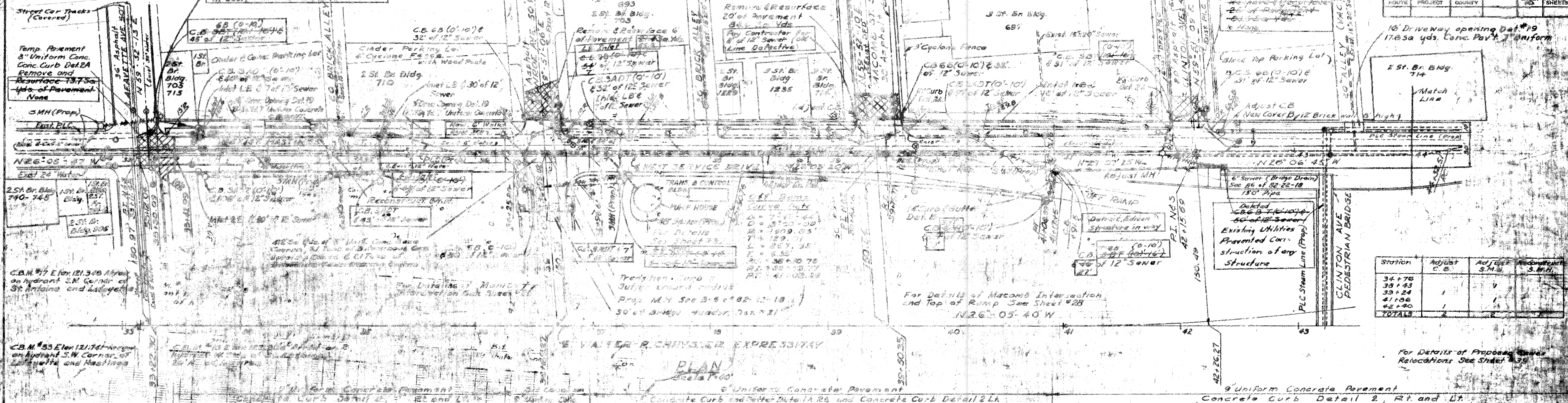
Contractor Requested Change to Avoid Left-Handed Traffic. No Increase in Cost.

C.B.M. #19 Elev 123.279 Arrow on hydrant N.W. Corner of St Antoine and Macomb

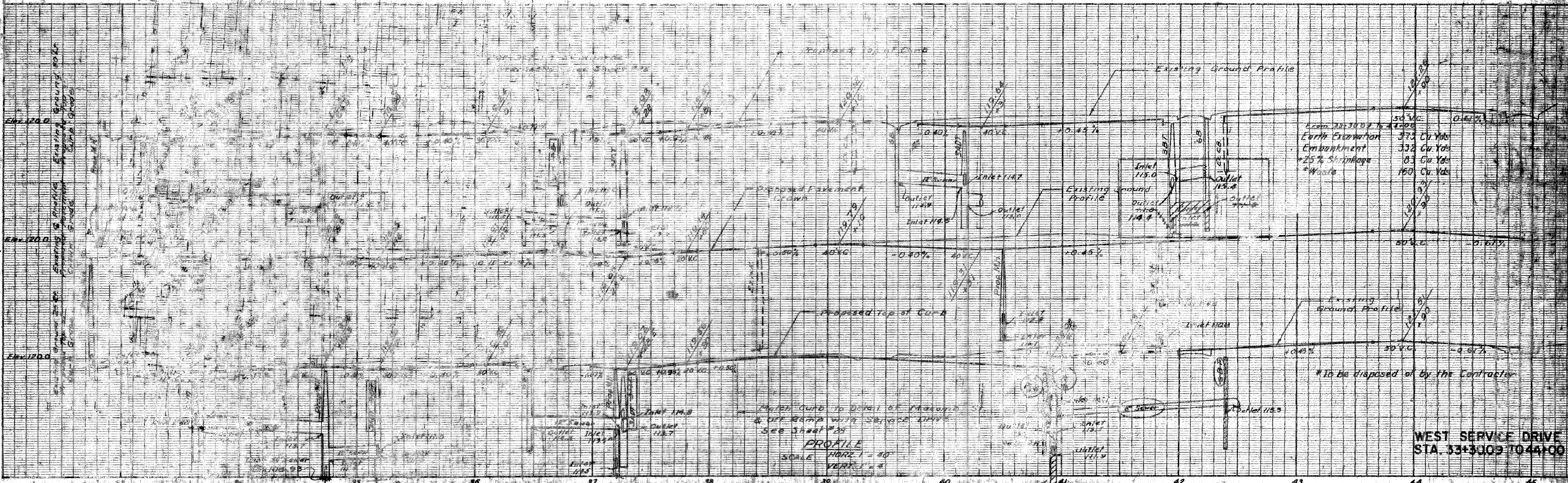
C.B.M. #20 Elev 125.217 Arrow on hydrant N.W. Corner of St Antoine and Clinton

C.B.M. #21 Elev 125.686 Arrow on hydrant S.E. Corner of St Antoine and Juliett

D.P. No.	STATE	PROJ. NO.	FILE NO.	SHEET NO.	TOTAL SHEETS
4	MICH.	1-07-1(22)		21	21
ROUTE	COUNTY	CITY	PROJECT	SHEET NO.	TOTAL SHEETS
3811	WAYNE	DETROIT		21	21



PLAN Scale 1"=40'



PROFILE Scale HORIZ 1"=40' VERT 1"=4'

WEST SERVICE DRIVE STA. 33+30.0 TO 44+00

PLANS PREPARED BY CITY OF DETROIT DEPARTMENT OF PUBLIC WORKS CITY ENGINEERS OFFICE BUREAU OF HIGHWAYS AND EXPRESSWAYS

DATE	BY	OPERATION
7/78	CASTALANO-SITKEY	FINAL DESIGN CHECKED
7/78	SATTERLY-MELEAN	PLAN CHECKED
7/78	LEAHER	CONTRACT APPROVED
		RECOMMENDED

DATE	BY	OPERATION
		FINAL DESIGN CHECKED
		PLAN CHECKED
		CONTRACT APPROVED
		RECOMMENDED

DATE	BY	OPERATION
		FINAL DESIGN CHECKED
		PLAN CHECKED
		CONTRACT APPROVED
		RECOMMENDED

DATE	BY	OPERATION
		FINAL DESIGN CHECKED
		PLAN CHECKED
		CONTRACT APPROVED
		RECOMMENDED

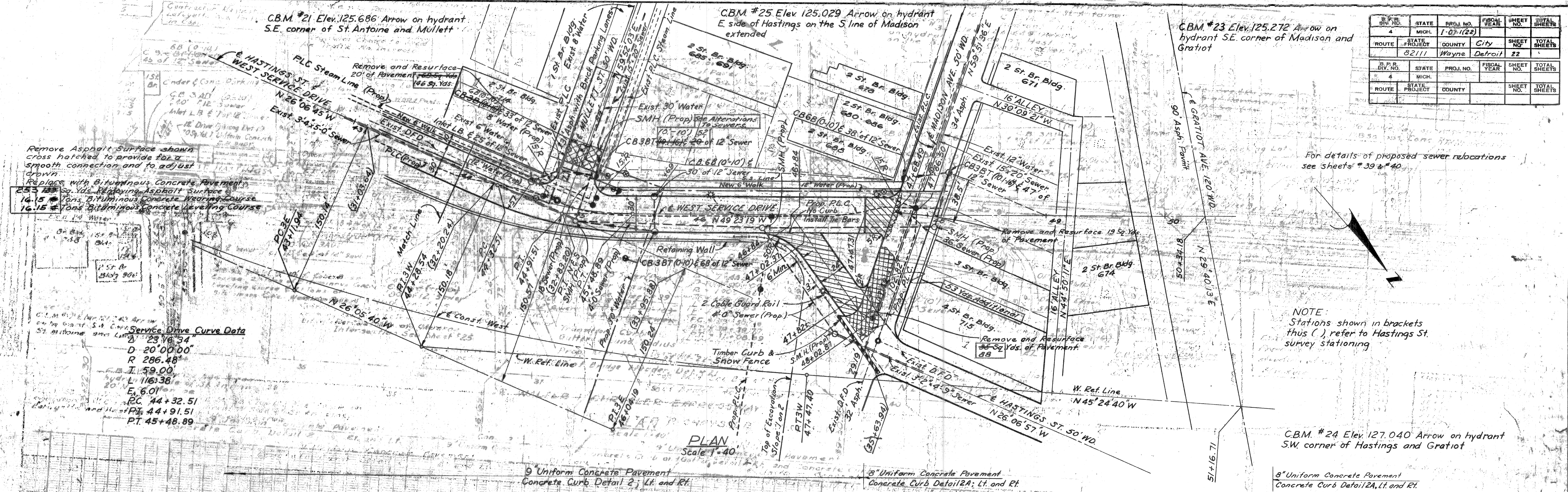
PLANS PREPARED BY
CITY OF DETROIT
DEPARTMENT OF PUBLIC WORKS
CITY ENGINEERS OFFICE
BUREAU OF HIGHWAYS AND EXPRESHWAYS

CBM #21 Elev. 125.686 Arrow on hydrant
S.E. corner of St. Antoine and Mullett

CBM #25 Elev. 125.029 Arrow on hydrant
E side of Hastings on the S line of Madison
extended

CBM #23 Elev. 125.272 Arrow on hydrant
S.E. corner of Madison and
Gratiot

SHEET NO.	4	TOTAL SHEETS	22
ROUTE	8211	COUNTY	Wayne
PROJECT	8211	CITY	Detroit
STATE	MICH.	PROJ. NO.	1-07-1122
FISCAL YEAR	1-07-1122	SHEET NO.	4
TOTAL SHEETS	22	TOTAL SHEETS	22



For details of proposed sewer relocations see sheets # 39 & #40

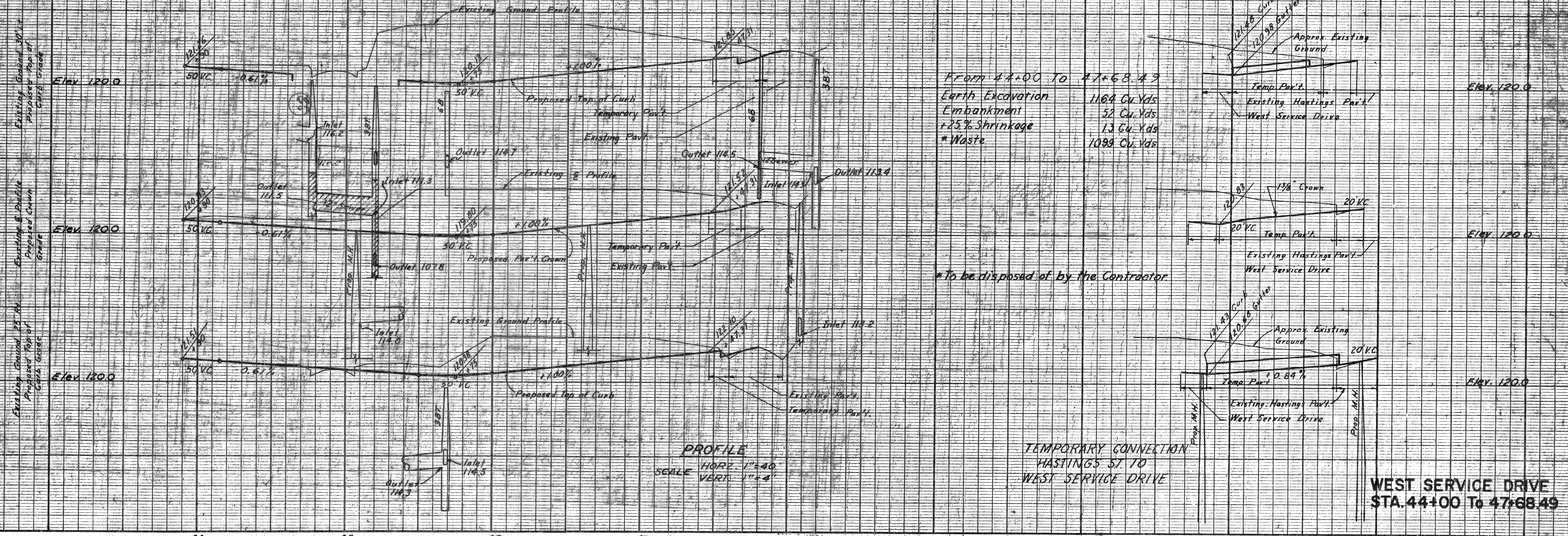
NOTE:
Stations shown in brackets thus (), refer to Hastings St. survey stationing

CBM #24 Elev. 127.040 Arrow on hydrant
S.W. corner of Hastings and Gratiot

9" Uniform Concrete Pavement
Concrete Curb Detail 2; Lt. and Rt.

8" Uniform Concrete Pavement
Concrete Curb Detail 2A; Lt. and Rt.

8" Uniform Concrete Pavement
Concrete Curb Detail 2A; Lt. and Rt.



PROFILE
HORIZ. 1"=40'
VERT. 1"=4'

TEMPORARY CONNECTION
HASTINGS ST TO
WEST SERVICE DRIVE

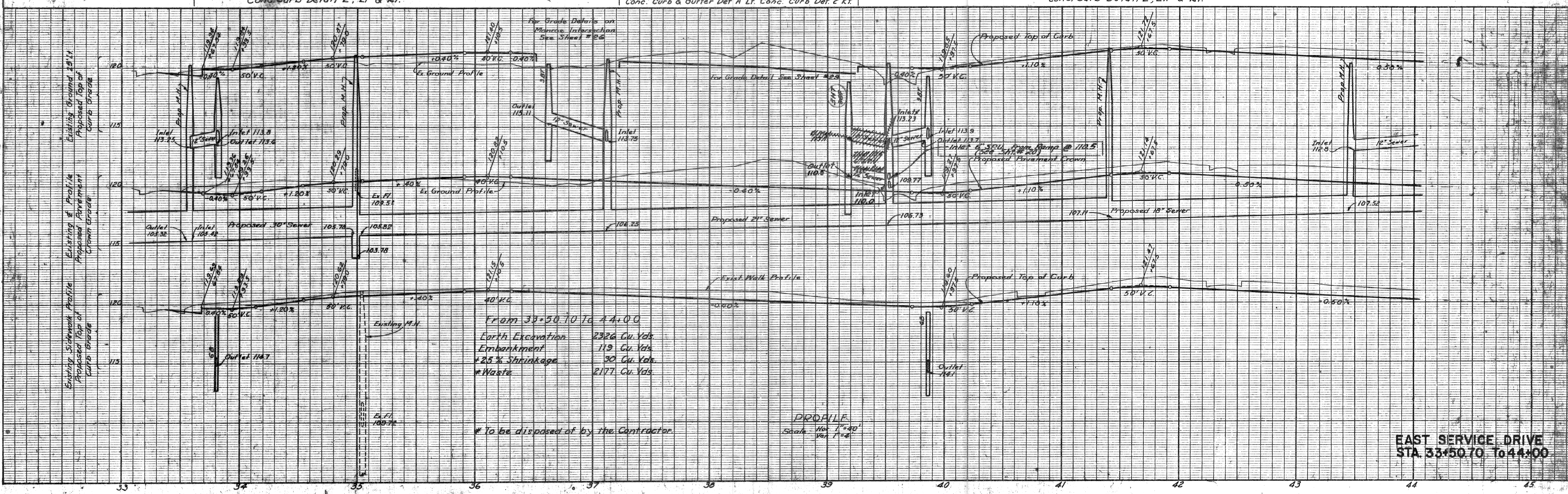
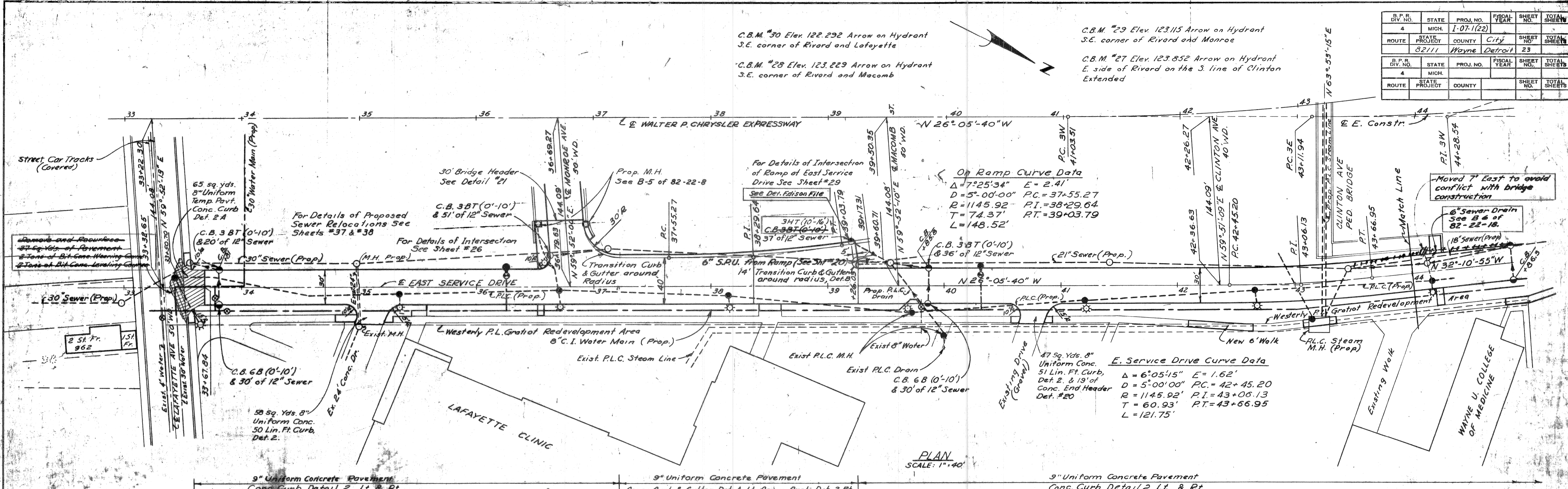
WEST SERVICE DRIVE
STA. 44+00 TO 47+68.49

DATE	BY	OPERATION
6-1-54	REYNOLDS, RILEY	PRELIMINARY P.C. W. CHECKED
7-5	CHERAVA, JERRY	FINAL DESIGN CHECKED
7-5	CHERAVA, JERRY	TRANSIT CHECKED
7-5	CHERAVA, JERRY	FINAL P.C. W. CHECKED
7-5	CHERAVA, JERRY	QUANTITIES CHECKED
7-5	CHERAVA, JERRY	QUANTITIES CHECKED

DATE	BY	OPERATION
		PLANS PLOTTED
		PLAN CHECKED
		PROFILE CHECKED
		PRELIMINARY GRADE
		FINAL REVISION
		LEGALLY RECORDED

PLANS PREPARED BY
CITY OF DETROIT
DEPARTMENT OF PUBLIC WORKS
CITY ENGINEERS OFFICE
BUREAU OF HIGHWAYS AND EXPRESSWAYS

B.P.R. DIV. NO.	STATE	PROJ. NO.	FISCAL YEAR	SHEET NO.	TOTAL SHEETS
4	MICH.	1-07-1(22)		23	23
ROUTE	STATE PROJECT	COUNTY	CITY	SHEET NO.	TOTAL SHEETS
8211	Wayne	Detroit		23	23



EAST SERVICE DRIVE
STA. 33+50.70 To 44+00