

22662

SPECIAL PROVISIONS

GRADES FOR INTERSECTIONS

All intersections are to be considered as complete units and their grades determined before construction is started.

PAVEMENT REINFORCEMENT

The pavement reinforcement shall conform to Standard Plan E-4-A-21F except that the length of sheet or mat for 12-foot lanes may be 15'-0" instead of 10'-0". The laying lap for 15-foot length sheet or mat shall be 18 inches. The computed weight of steel per standard sheet is as follows:

Type of Reinforcement	Weight per 15 foot length of Standard Sheet for 12 foot lane in Lbs.
Mesh - - - - -	128.9
Bar Mat - - - - -	142.2
Expanded Metal - - - - -	138.0

B. P. R. DIV. NO.	STATE	PROJ. NO.	FISCAL YEAR	SHEET NO.	TOTAL SHEETS
4	MICH.	DU-245(23)			
ROUTE	STATE PROJECT	COUNTY	CITY	SHEET NO.	TOTAL SHEETS
US-12	B206	Wayne	Detroit	2	
B. P. R. DIV. NO.	STATE	PROJ. NO.	FISCAL YEAR	SHEET NO.	TOTAL SHEETS
4	MICH.				
ROUTE	STATE PROJECT	COUNTY		SHEET NO.	TOTAL SHEETS

NOTES APPLYING TO STANDARD PLANS

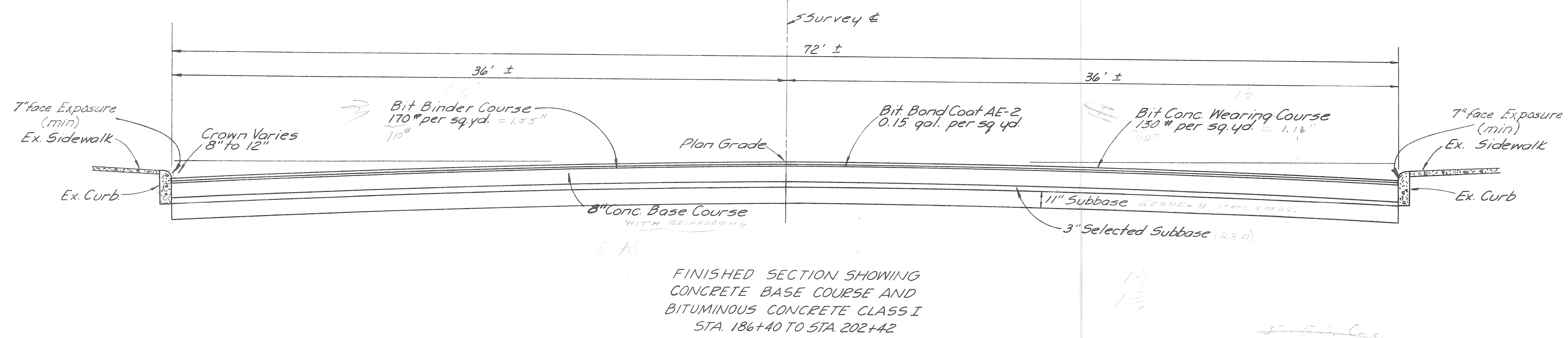
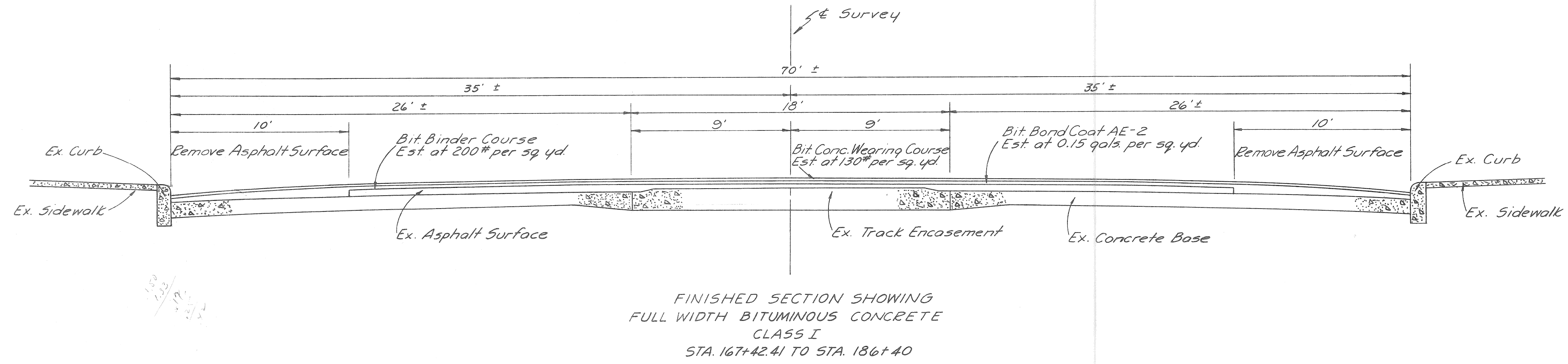
Where the following items are called for on plans they are to be constructed according to the Standard Plan given below opposite each item unless otherwise indicated:

Manholes, Catch Basins and Inlets	E-4-A-27R-3
Cover A	E-4-A-27A-3
Cover B	Optional - E-4-A-27B-3 or E-4-A-27B-4
Concrete Curb, Roll Curb and Curb and Gutter	E-4-A-29E
Pavement Crowns	E-4-A-49B-7
4" Concrete Sidewalk	E-4-A-110B, Detail 2
Typical Joint Layout	E-4-A-127A
Barricade and Project Sign	E-6-A-55E

AJ (5-2-58)

TYPICAL CROSS-SECTIONS

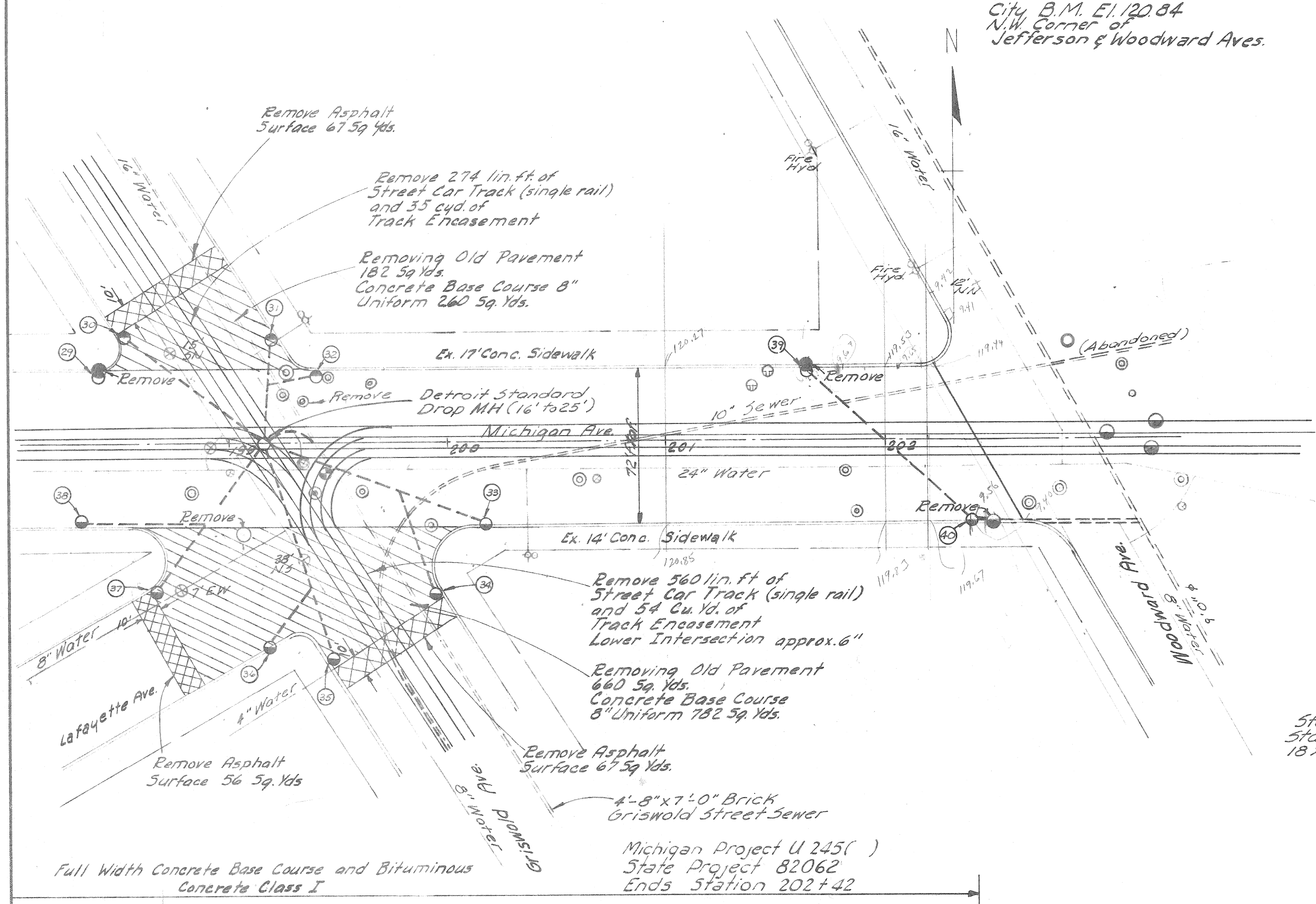
S. P. R. DIV. NO.	STATE	PROJ. NO.	FISCAL YEAR	SHEET NO.	TOTAL SHEETS
4	MICH.	DU 245 (23)			
ROUTE	STATE PROJECT	COUNTY	CITY	SHEET NO.	TOTAL SHEETS
US-112	82062	Wayne	Detroit	3	
S. P. R. DIV. NO.	STATE	PROJ. NO.	FISCAL YEAR	SHEET NO.	TOTAL SHEETS
4	MICH.				
ROUTE	STATE PROJECT	COUNTY	CITY	SHEET NO.	TOTAL SHEETS



City B.M. El 120.84
N.W. Corner of
Jefferson & Woodward Aves.

B. P. R. DIV. NO.	STATE	PROJ. NO.	FISCAL YEAR	SHEET NO.	TOTAL SHEETS
4	MICH.	U-26-1			
ROUTE	STATE PROJECT	COUNTY	CITY	SHEET NO.	TOTAL SHEETS
US 112	82062	Wayne	Detroit	7	
B. P. R. DIV. NO.	STATE	PROJ. NO.	FISCAL YEAR	SHEET NO.	TOTAL SHEETS
4	MICH.				
ROUTE	STATE PROJECT	COUNTY	CITY	SHEET NO.	TOTAL SHEETS

OPERATION	BY	DATE
PRELIMINARY E.O.W. CHECKED		
FINAL DESIGN CHECKED		
TRACED		
QUANTITIES CHECKED		
SQUAD		



Estimated Quantities (this sheet)
 Removing Sidewalk 125 Sq. Yds.
 Removing Curb 650 Lin. Ft.
 4" Concrete Sidewalk 1125 Sq. Ft.
 Concrete Curb Det 2 650 Lin. Ft.

Drainage Structures - this sheet
 Removing Manholes 2 each
 Removing Catch Basins 3 each
 Adjusting Manhole Covers 17 each

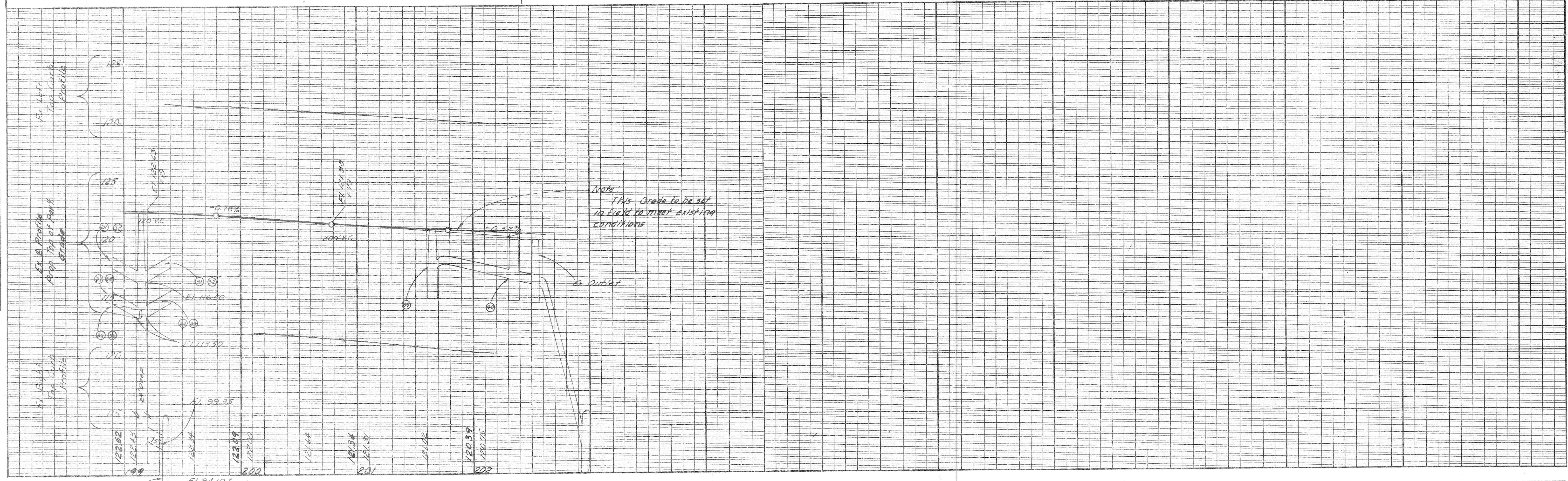
12" Sewer 750 lin. ft.
 15" Sewer (16 to 25' depth) 20 lin. ft.
 Standard Detroit Drop M.H. 1 each (16'-25')
 Standard City of Detroit 18x12 Y Basins (Spec CB Det #1) 12 each

The following items of work are estimated for the entire project where old pavement is removed and where new sewer lines are constructed or as directed by the Engineer. They are not detailed on the plan or included on the plan and profile sheets.

Earth Excavation & Waste (estimated 2' depth) 9600 cyds.
 Emb - Furnished in Place 5000 cyds.
 Subbase (loose measure) 5500 cyds.
 Selected Subbase - 23A 2400 Tons
 Porous Material Grade B (loose measure) 1000 cyds.
 Final Trimming and Cleaning Up
 Sta. 186+40 - 202+42 16 stas.
 Part-width Construction
 Sta. 186+40 - 202+42 16 stas.
 Porous Material Grade A (loose measure) 1425 cyds.

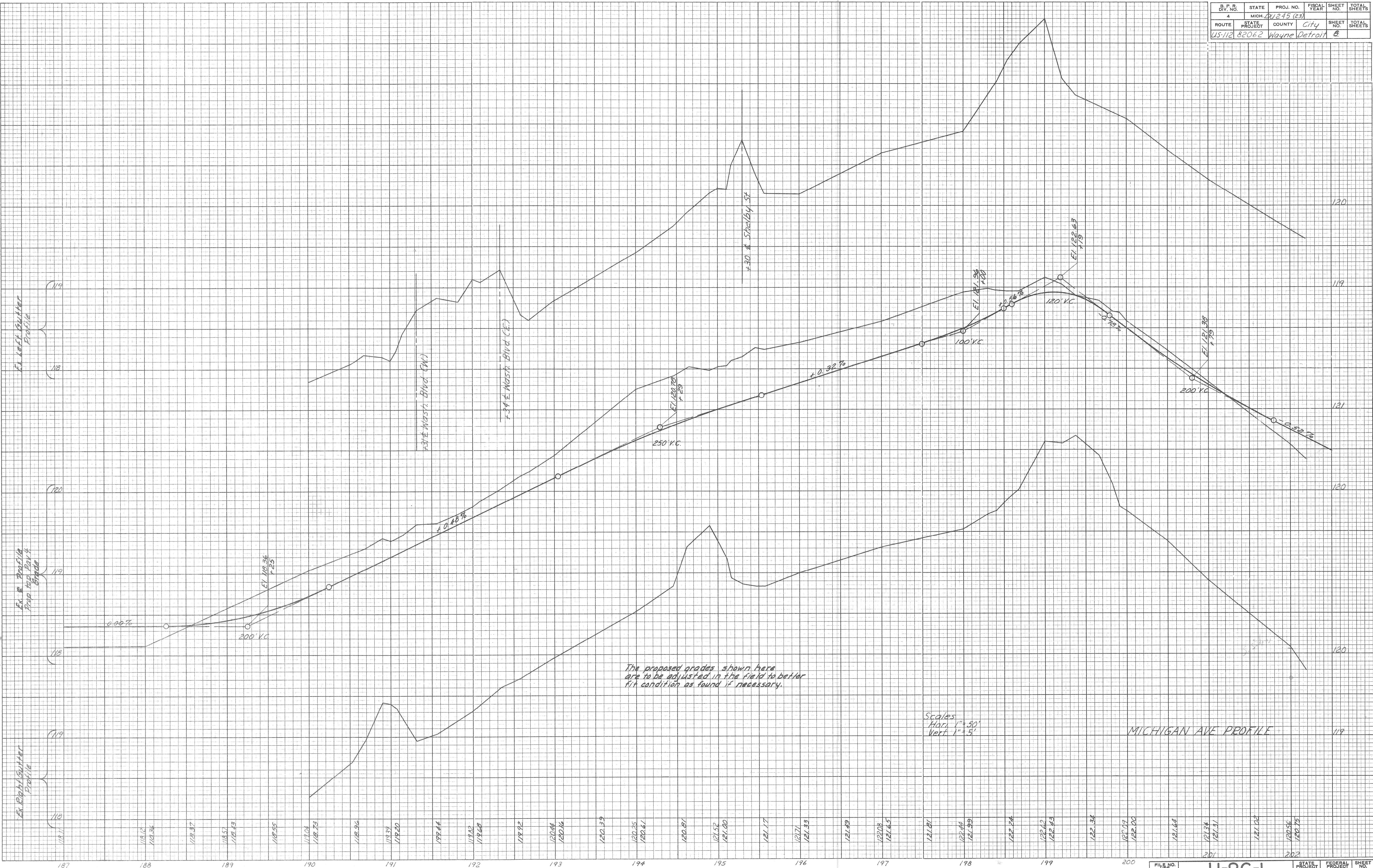
Michigan Project U 245()
 State Project 82062
 Ends Station 202+42

OPERATION	BY	DATE
SURVEY		
PLAN PLOTTED		
PLAN CHECKED		
PROFILE PLOTTED		
PROFILE CHECKED		
GRADE INSPECTION		
FEDERAL INSPECTION		



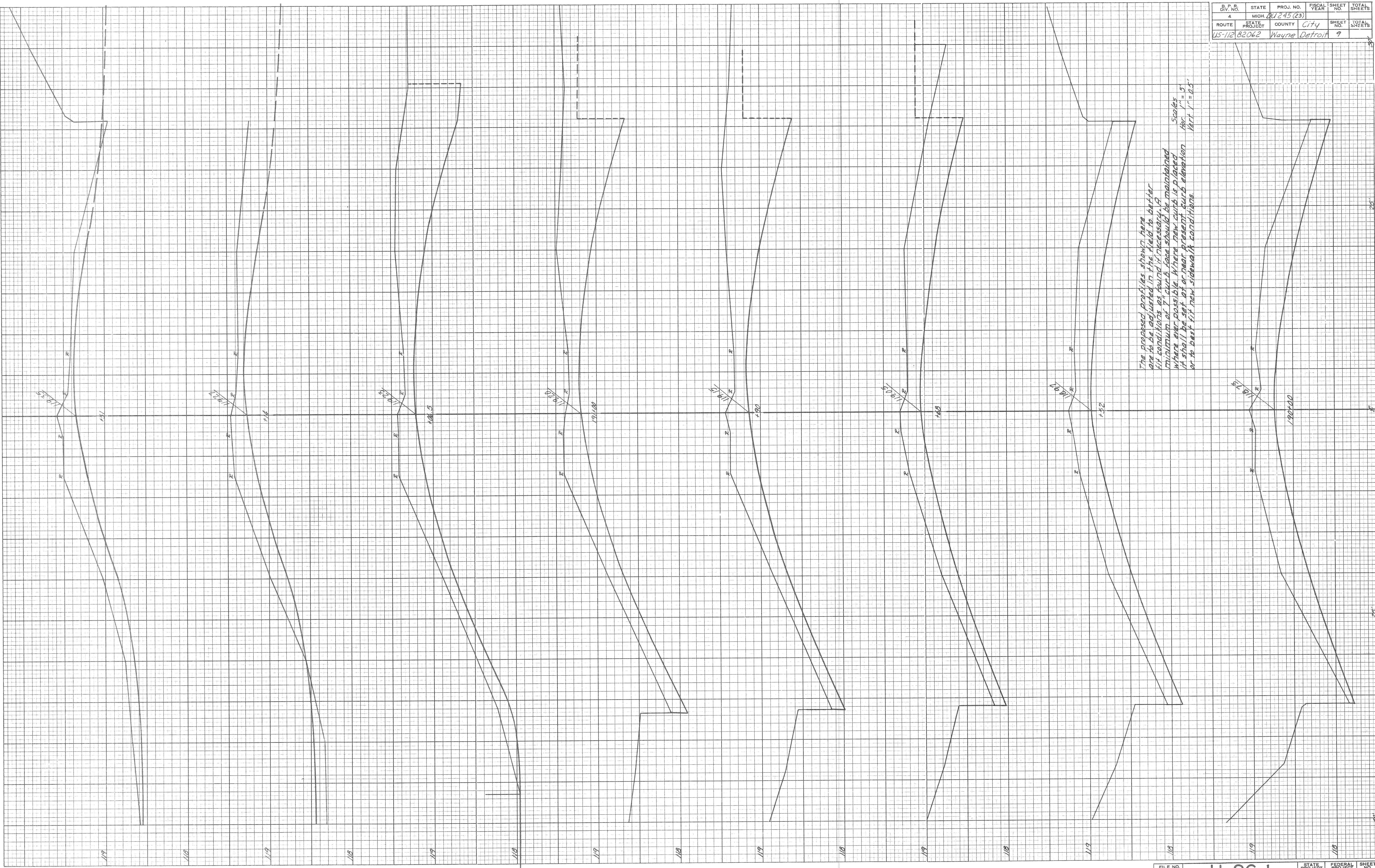
STATE PROJECT NO.	STATE	PROJ. NO.	FISCAL YEAR	SHEET NO.	TOTAL SHEETS
US-112	MICH.	82062	81/245 (23)	8	8
COUNTY	CITY				
Wayne	Detroit				

DATE	BY



B. P. R. DIV. NO.	STATE	PROJ. NO.	FISCAL YEAR	SHEET NO.	TOTAL SHEETS
4	MICH.	245 (23)		9	
ROUTE	STATE PROJECT	COUNTY	CITY	SHEET NO.	TOTAL SHEETS
US-112	82062	Wayne	Detroit	9	

BY	DATE
FLOTTED	COMPUTED
CHECKED	

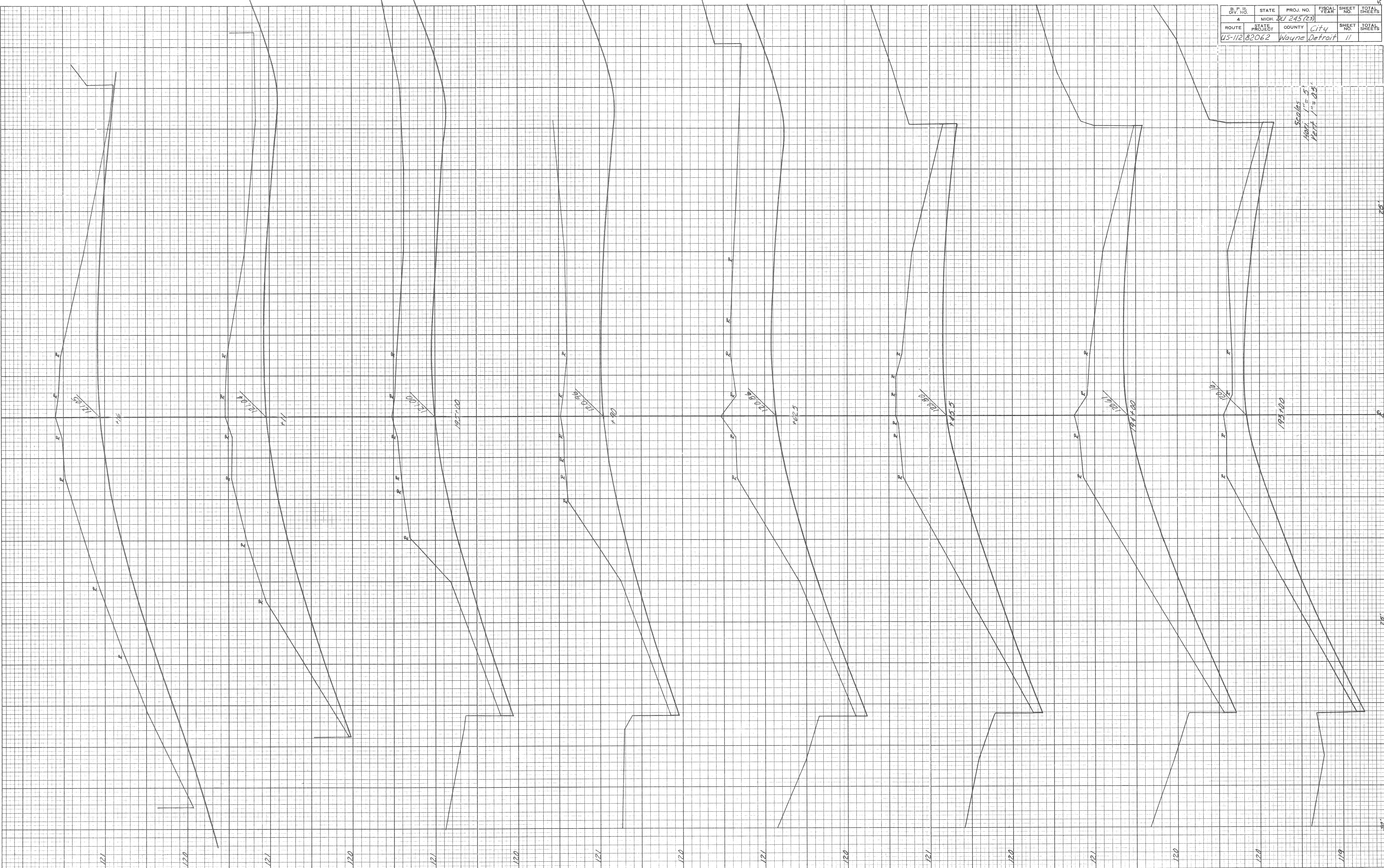


The proposed profiles shown here are to be adjusted in the field to better fit conditions as found if necessary. A minimum of 7' curb base should be maintained where ever possible. Where new curbs is placed it shall be set at or near present curb elevation or to best fit new sidewalk conditions.

Scales
hor. 1" = 5'
vert. 1" = 0.5'

B. P. R. DIV. NO.	STATE	PROJ. NO.	FISCAL YEAR	SHEET NO.	TOTAL SHEETS
4	MICH.	21 245 (23)			
ROUTE	CITY	COUNTY	CITY	SHEET NO.	TOTAL SHEETS
US-112 82062	Wayne	Detroit		11	

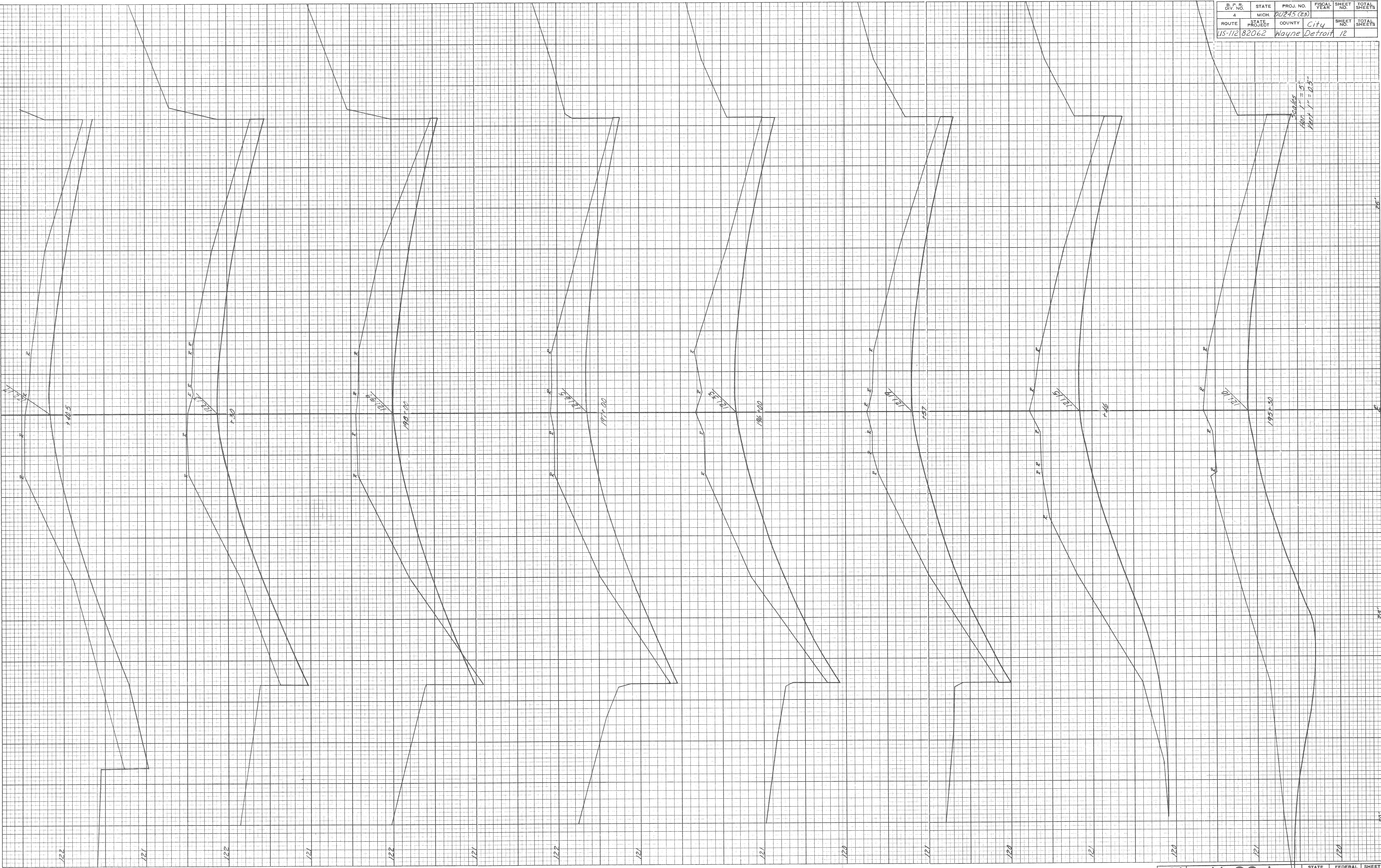
BY	DATE
PLOTTED	COMPUTED
CREATED	



Scale:
 1" = 5'
 1" = 25'

B. P. R. DIV. NO.	STATE	PROJ. NO.	FISCAL YEAR	SHEET NO.	TOTAL SHEETS
4	MICH.	D0245 (23)			
ROUTE	STATE PROJECT	COUNTY	CITY	SHEET NO.	TOTAL SHEETS
115-112.82062	Wayne	Detroit		12	

BY	DATE



Scale
 1" = 5'
 1/4" = 0.5'

