

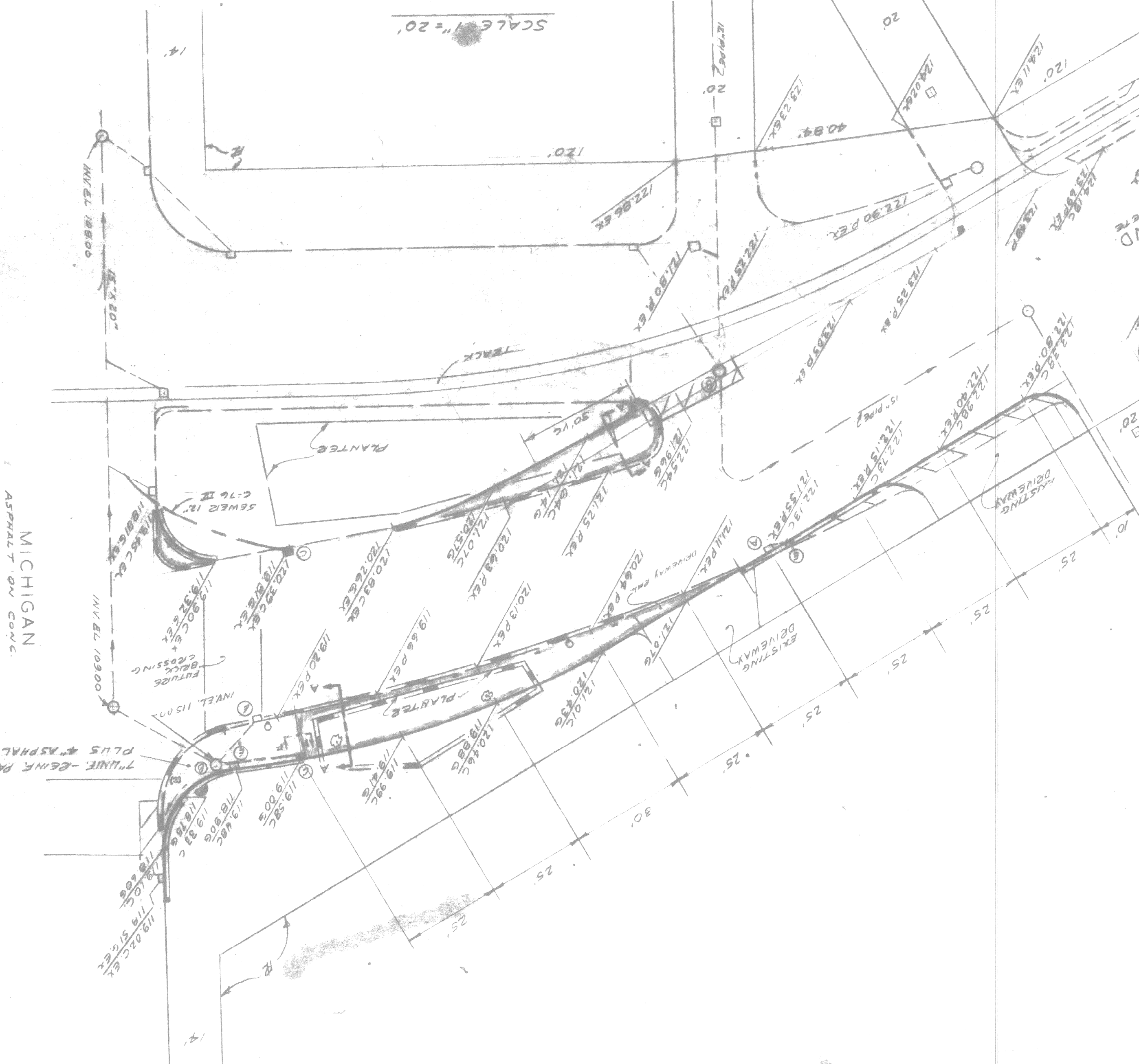
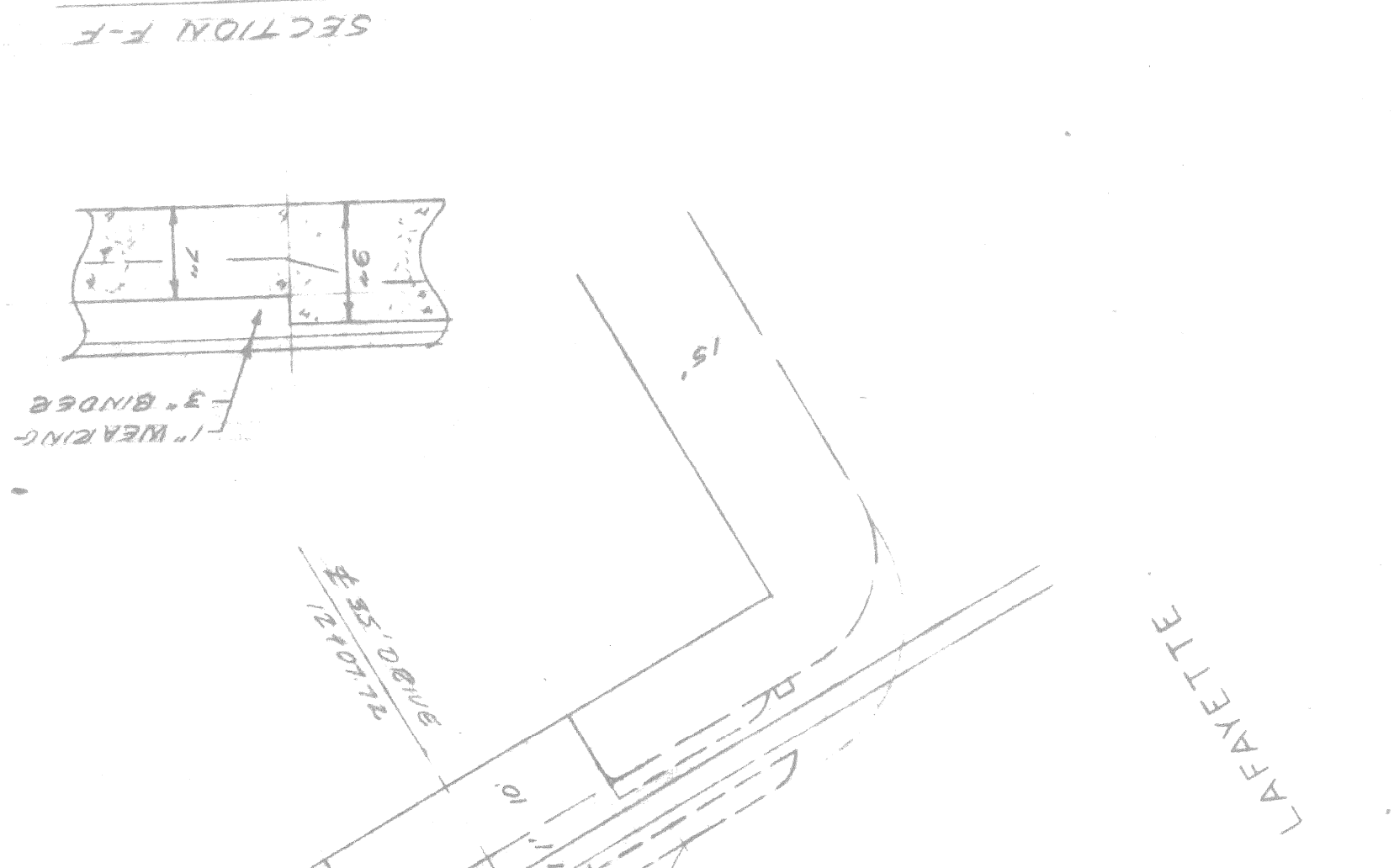
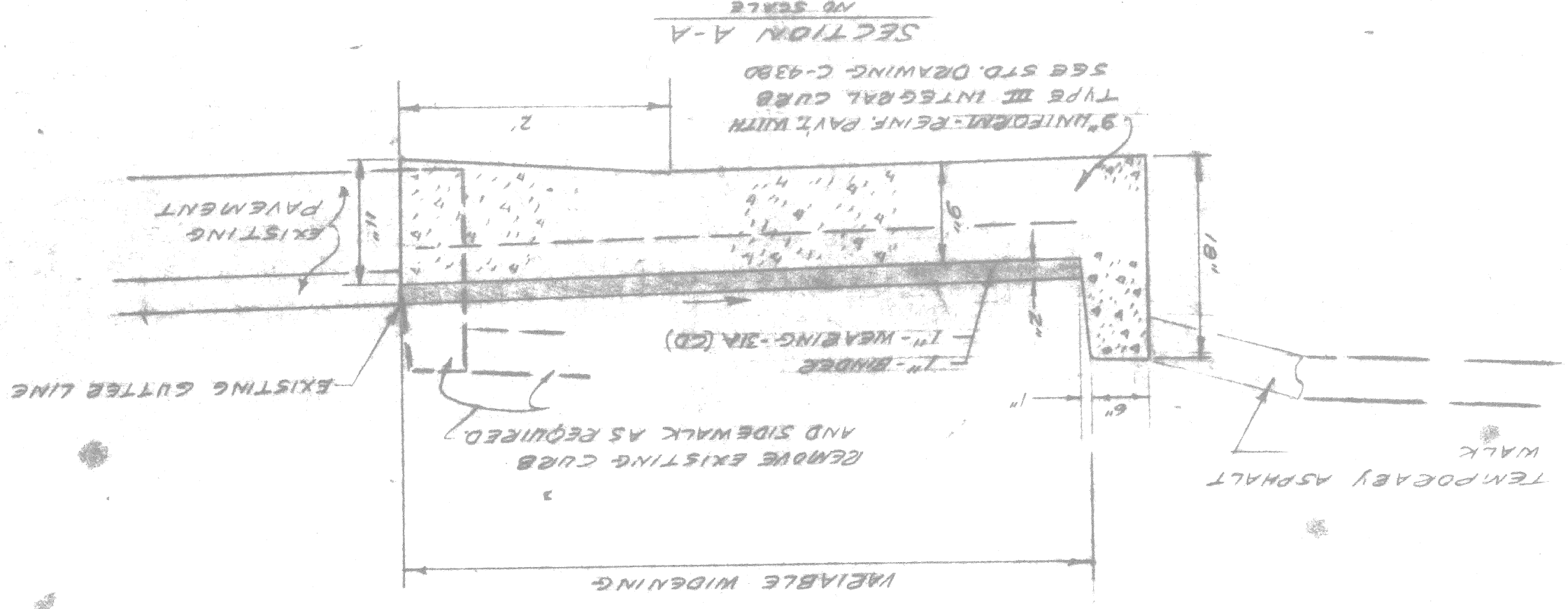
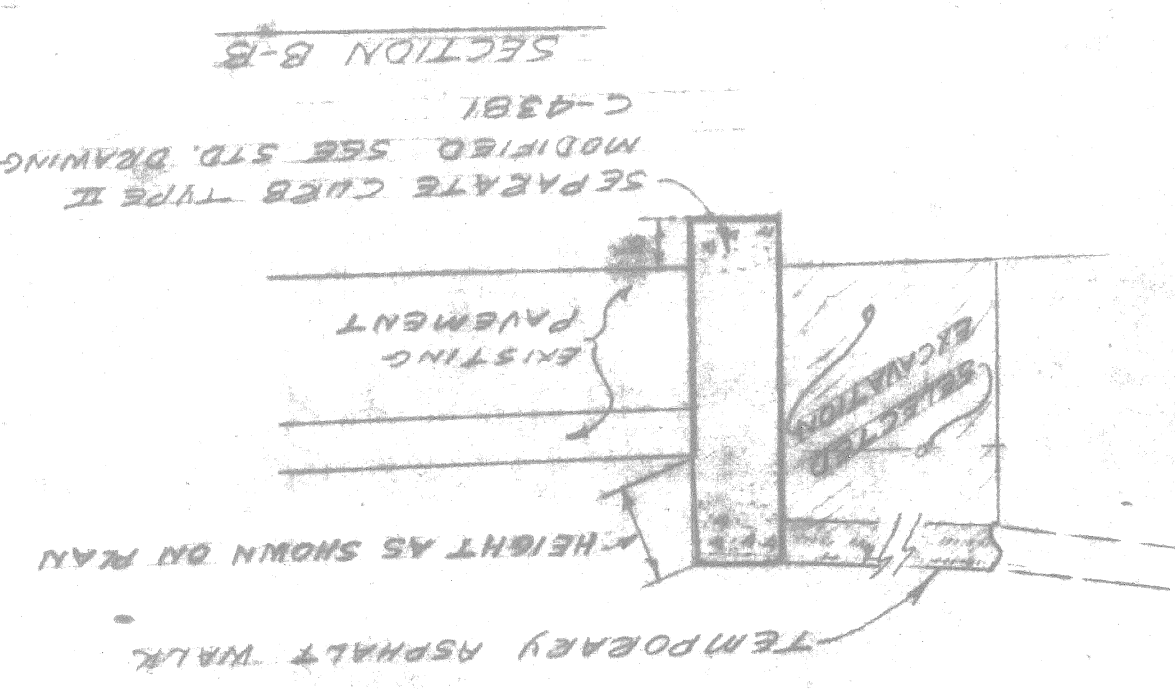
DATE MAY 19, 1976
DRWG NO.
NO. CONTRACT
SHEET OF SHEETS

CITY OF DETROIT
 CITY ENGINEERING DIVISION
 P.M.D.
 COMMUNITY AND ECONOMIC DEVELOPMENT DEPARTMENT

WASHINGTON BOULEVARD RE-ALIGNMENT
 LAFAYETTE TO MICHIGAN

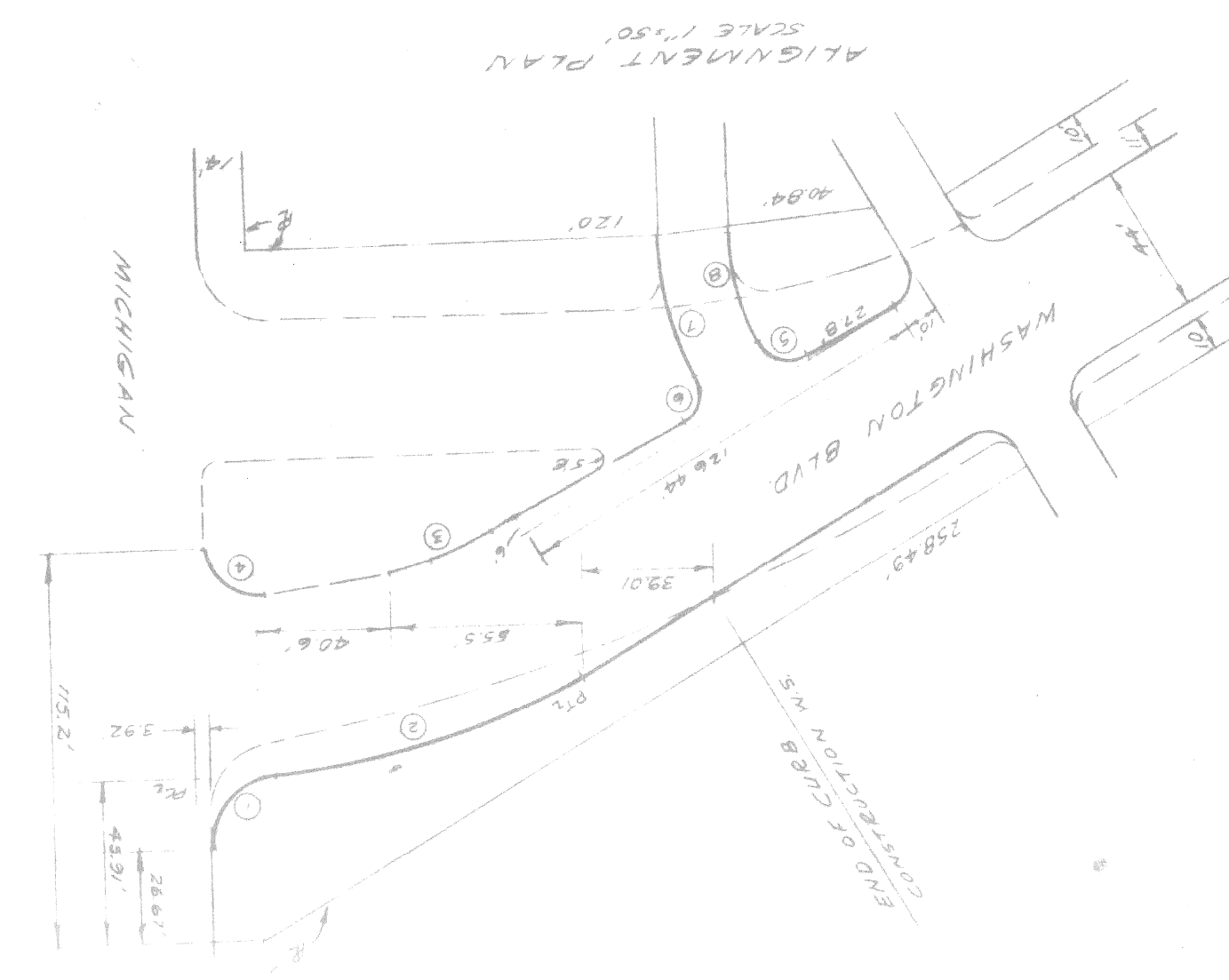
APPROVED	DESIGNED BY	DRAWN BY	TRACED BY	CHECKED BY
(Signature)	(Signature)	(Signature)	(Signature)	(Signature)

JOB NO 76-14-10



CURVE DATA

Δ 89°55'4"	Δ 17°59'05"	E 15'	E 100'	T 17.59'	T 15.82'	A 25.94'	A 31.39'	A 11.602'	A 31.39'
E 20'	E 100'	T 17.59'	T 15.82'	A 25.94'	A 31.39'	A 11.602'	A 31.39'	A 11.602'	A 31.39'
Δ 90°00'00"	Δ 90°00'00"	Δ 26°54'55"	Δ 26°54'55"	E 30'	E 30'	T 16.75'	T 16.75'	A 4.228'	A 4.228'
E 10'	E 10'	E 30'	E 30'	T 16.75'	T 16.75'	A 4.228'	A 4.228'	A 4.228'	A 4.228'
T 10'	T 10'	A 1571'	A 1571'	A 4.228'	A 4.228'	A 4.228'	A 4.228'	A 4.228'	A 4.228'



LEGEND

12540C	PROPOSED CURB ELEV
12490 REX	EXISTING PAVEMENT ELEV
12254C	PROPOSED CURB ELEV
12196G	PROPOSED CUTTER ELEV
12083CX	EXISTING CURB ELEV
12026GEX	EXISTING CUTTER ELEV
TYPE B SIDEWALK BUMP	9" UNIFORM-BUMP PAVT PLUS 2" ASPHALT
STEER AND ADJUST ASPHALT SURFACE	EXISTING CURB LINE
CONSTRUCT 18"x12" SPECIALTY CATCH BASIN	ABANDON EXISTING CATCH BASIN
ADJUST EXISTING MANHOLE	R.D. LIGHT POLE TO BE REMOVED BY OTHERS
TRAFFIC SIGNAL LIGHT REMOVED BY OTHERS	PARKING METE
TREES	SEPARATE TYPE CURB REMOVAL
STREET PAVEMENT REMOVAL-UNEVEN	CONSTRUCT SEPARATE CURB-TYPE II MODIFIED
ADJUST EXISTING CATCH BASIN	

NOTE

BEFORE STATING CONSTRUCTION-CONTRACTOR MUST CHECK WITH UTILITIES FOR LOCATIONS OF EXISTING STRUCTURES WHETHER OR NOT INDICATED ON PLANS. WORK SHALL BE PERFORMED IN ACCORDANCE WITH CITY OF DETROIT "STANDARD SPECIFICATIONS FOR PAVING AND RELATED CONSTRUCTION" DATED JANUARY 1974 AS AMENDED BY BULLETINS.

CALL MISS DIG
 48 HOURS PRIOR TO
 CONSTRUCTION 647-7344

GENCH MARKS
 P.L.M. # 28-353A-NC 608 FOOT & WASH. BLVD. 127.85
 60M WASH. BLVD. FRONT OF 1010 WASH. BLVD. 126.69