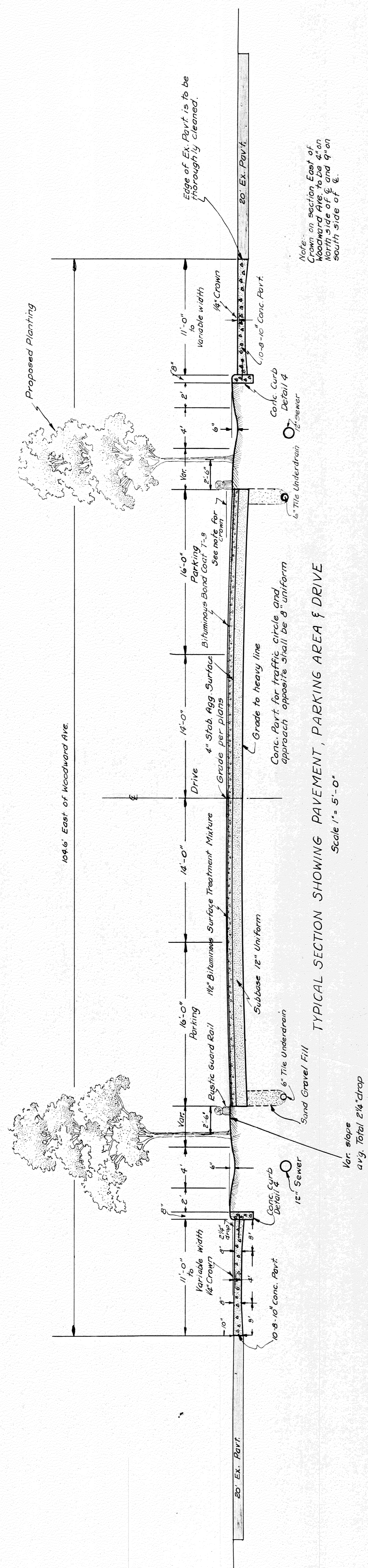


TYPICAL CROSS-SECTIONS

FED. ROAD DIST. NO.	STATE	PROJ. NO.	YEAR	SHEET NO.	TOTAL SHEETS
7	MICH.				
ROUTE	STATE	COUNTY	CITIES	SHEET NO.	TOTAL SHEETS
M-102	E. J. 24	Washtenaw	Ann Arbor		
FED. ROAD DIST. NO.	STATE	PROJ. NO.	FISCAL YEAR	SHEET NO.	TOTAL SHEETS
7	MICH.				
ROUTE	STATE	COUNTY	TWP.	SHEET NO.	TOTAL SHEETS



TYPICAL SECTION SHOWING PAVEMENT, PARKING AREA & DRIVE
Scale 1" = 5'-0"

JOINT LEGEND

- (E) 1" Expansion Joint
- (D) Contraction Joint with Tie Bars, Standard Plan E-4-A-33B, Detail 1, Alternate, for E, or Metal Construction with Tie Bars, Detail 8, Standard Plan E-4-A-33B, Detail 3.
- (B) Straight Through Construction Joint with Tie Bars, Standard Plan E-4-A-33B, Detail 3.
- (D) Optional B or D.
- (M) Transverse Plane of Weakness Joint, Standard Plan E-4-A-33B, Detail 5, Alternate 1 or 2.

The surface Treatment shall be Non-Skid Resurfacing 4.11 (1 1/2" Bituminous Bond Coat is estimated at 1/4 gallon per sq. yd. Bituminous Surface Treatment Mixture, 1 1/2", is estimated at the rate of 150 lbs. per square yard.

SPECIAL PROVISIONS

TRANSPLANTING TREES AND SHRUBS

Where called for on plans, trees and shrubs are to be transplanted by the Maintenance Division, Office of the Highway Department Forester as a part of this project but not a part of the road contract.

GRADES FOR INTERSECTIONS

All intersections are to be considered as complete units and their grades determined before construction is started.

PAVEMENT REINFORCEMENT

Bar Mat or Expanded Metal Mesh Reinforcement.

TRANSVERSE EXPANSION AND PLANE OF WEAKNESS JOINTS

Transverse expansion and plane of weakness joints shall be placed where shown in special details on the plans and elsewhere as follows: In concrete pavement widening, 1/2 inch transverse expansion joints shall be placed in line with like joints in the existing pavement with a maximum spacing of approximately 120'. Transverse plane of weakness joints shall be placed at approximately 30' intervals between the expansion joints. Load transfer devices are not required.

Expansion joints and all other joints where a poured filler is used shall be added to one-quarter (1/4) inch radius.

HAND FINISHING

Hand Finishings according to 4.14.03 (Q) of the Standard Specifications will be allowed on all pavement outside the 11 foot widening strips.

NOTES APPLYING TO STANDARD PLANS

Where the following items are called for on plans they are to be constructed according to the standard plan given below opposite each item unless otherwise indicated.

- Tills Edge Drain E-4-A-9B, Detail 6
- Sodding E-4-A-10A
- Pavement Reinforcement E-4-A-21D
- Manholes, Catch Basins and Inlets E-4-A-27R1
- Cover A E-4-A-27-A1
- Cover B E-4-A-27-B1
- Cover E E-4-A-27-E1
- Catch Basin Trap E-4-A-27-T1
- Concrete Curb and Concrete Curb & Gutter E-4-A-29B
- Curb & Gutter Header E-4-A-29B, Detail 9
- Transitions E-4-A-29B, Detail 14
- Concrete End Header E-4-A-29B, Detail 20
- Contraction Joint with Tie Bars or Metal Construction Joint with Tie Bars E-4-A-33B, Detail 1 Alternate 1 or 2 E-4-A-33B, Detail 8
- Straight Bulkhead Construction Joint with Tie Bars E-4-A-33B, Detail 3 and 7 (Longitudinal Bulkhead Construction Joints shall be constructed according to Detail 7, except that before the adjacent section is poured the bar shall be bent to the position shown in Detail 3, Standard E-4-A-33B. The tie bar starter shall be held in proper vertical position. Painting of the joint shall be omitted.)
- Transverse Plane of Weakness Joint for Concrete Pavement E-4-A-33B, Detail 5 Alternate 1 or 2
- 4" Concrete Sidewalk E-4-A-110A, Detail 2
- Barricade and Construction Signs E-6-A-55B

PUBLIC UTILITIES

Name and Address of Owner: Unknown
Kind of Utility: Power Poles
Size or Capacity: Unknown
Location: Sta. to Sta. 8 Mile road E. & W. of Woodward Ave.

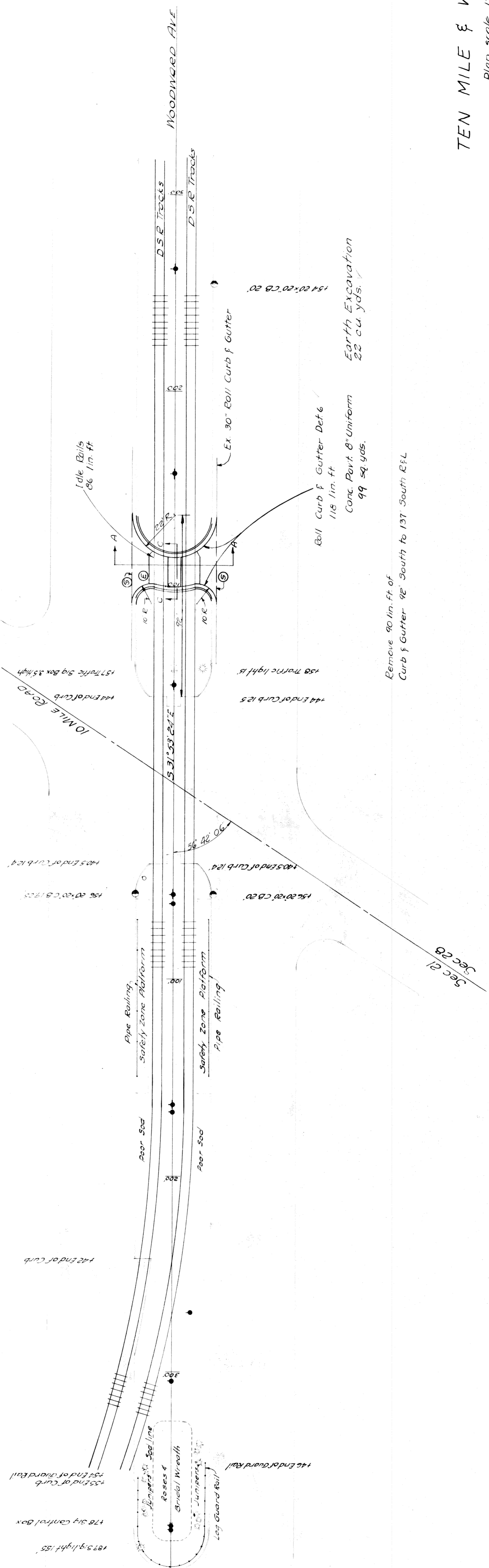
FED. ROAD DIST. NO.	STATE	PROJ. NO.	FISCAL YEAR	SHEET NO.	TOTAL SHEETS
63-24	MI.	63-24	1963	3	3

SUMMARY OF QUANTITIES
LENGTH 0.135 MILES
PARKING AREA AND TURN-AROUND

ROUTE	PROJECT	COUNTY	CITIES	SHEET NO.	TOTAL SHEETS
1	each				
325	lin. ft.				
50	lin. ft.				
1680	cu. yds.				
1941	sq. yds.				
8	sq. yds.				
575	lin. ft.				
18	lin. ft.				
1033	lin. ft.				
1	each				
3	each				
1	each				
4	each				
3	each				
2	each				
5.50	sta.				
3561	sq. yds.				
2808	sq. yds.				
210.4	ton				
702	gal.				
2.49	ton				
1135	lin. ft.				
313	lin. ft.				
165	lin. ft.				
895	sq. yds.				
947	sq. yds.				
1842	sq. yds.				
638	sq. ft.				
56	lin. ft.				
184	lin. ft.				
100	sq. yds.				
1510	sq. yds.				
912	lin. ft.				
6	each				
67	cu. yds.				
37	cu. yds.				
9	cu. yds.				
22	each				
71	each				
18	each				

DIST. NO.	STATE	PROJ. NO.	SHEET NO.	TOTAL SHEETS
7	MICH.			
ROUTE	STATE PROJECT	COUNTY	SHEET NO.	TOTAL SHEETS
US 24	62-24	CARLAND	6	6
FED. ROAD DIST. NO.	STATE	PROJ. NO.	FISCAL YEAR	TOTAL SHEETS
	MICH.			
ROUTE	STATE PROJECT	COUNTY	SHEET NO.	TOTAL SHEETS

001 60 A Elev 663.94
 87' in east of 36' box 14' north
 4' 07' east of Int. of 10 mile 60' &
 Woodward Ave



TEN MILE & WOODWARD
 Plan scale 1" = 30'

