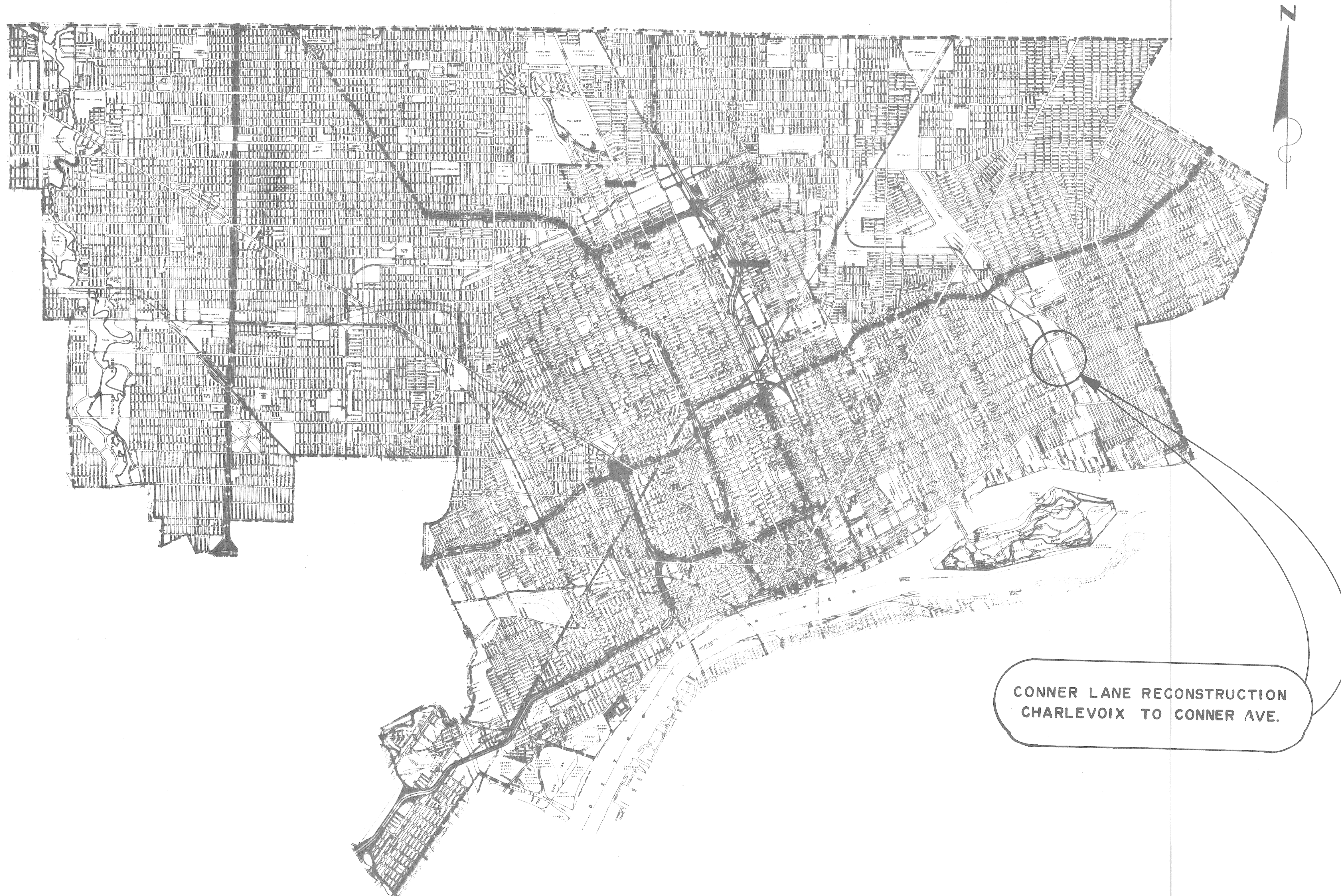


CITY OF DETROIT
 COLEMAN A. YOUNG — MAYOR
 CITY ENGINEERING DEPARTMENT

PLANS FOR PROPOSED
 CONNER LANE RECONSTRUCTION
 CHARLEVOIX TO CONNER AVE.



CONNER LANE RECONSTRUCTION
 CHARLEVOIX TO CONNER AVE.

INDEX OF SHEETS

1. TITLE SHEET
2. TYPICAL CROSS — SECTIONS
- 3.- 7. ALIGNMENT
- 8.-12. REMOVAL — UTILITIES
- 13.-17. PLAN AND PROFILE
18. TEMPORARY ROADWAY
19. SPECIAL STANDARDS & SPECIAL DETAILS

PROJECT: CONNER LANE RECONSTRUCTION, CHARLEVOIX TO CONNER AVE.	CONTRACT NO.
--	-----------------

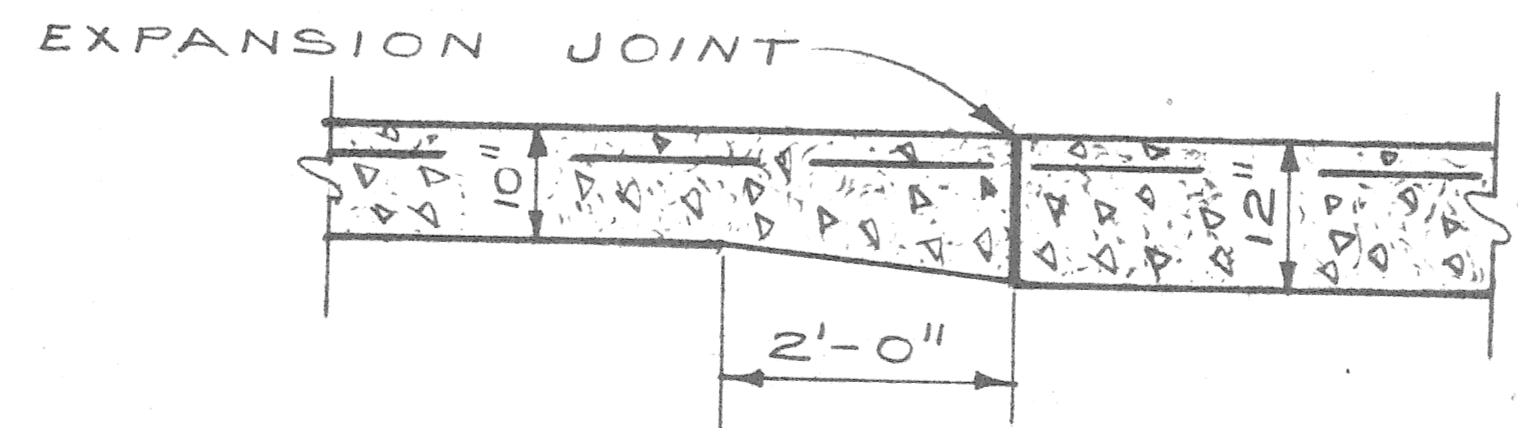
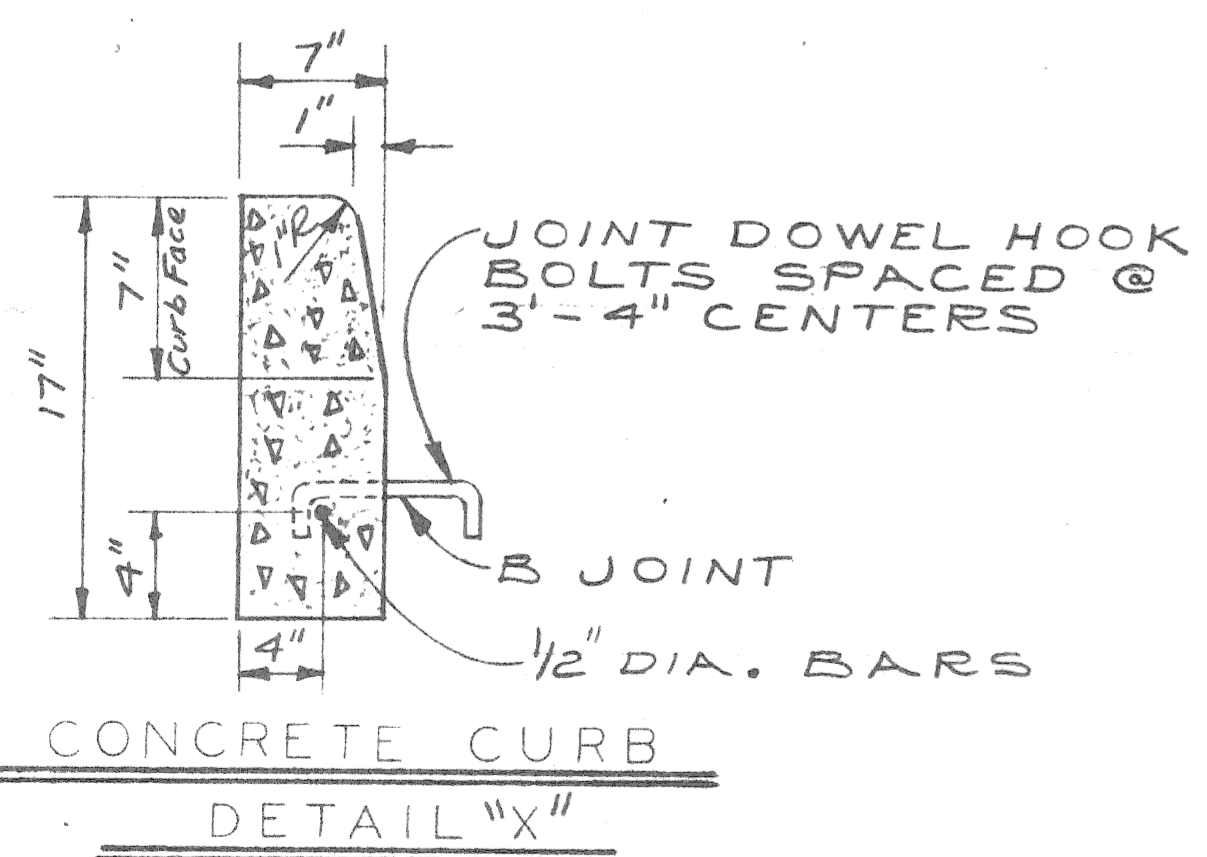
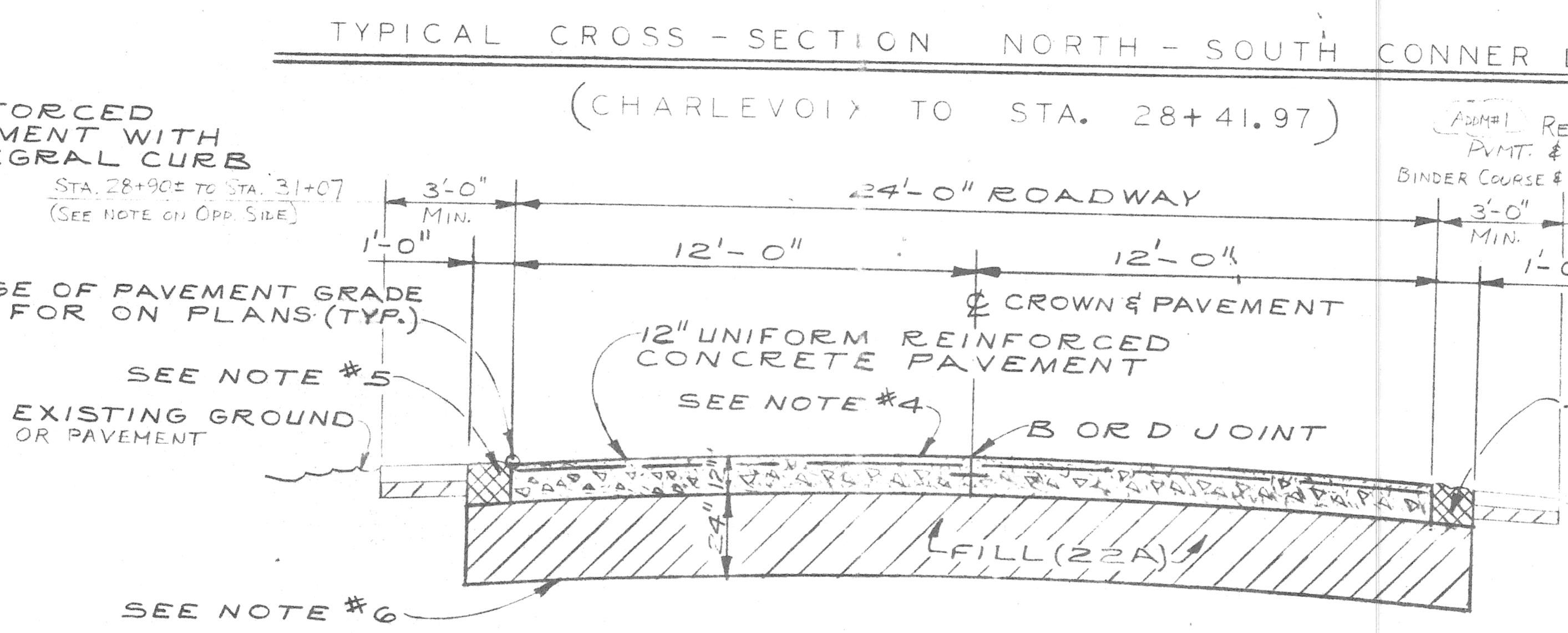
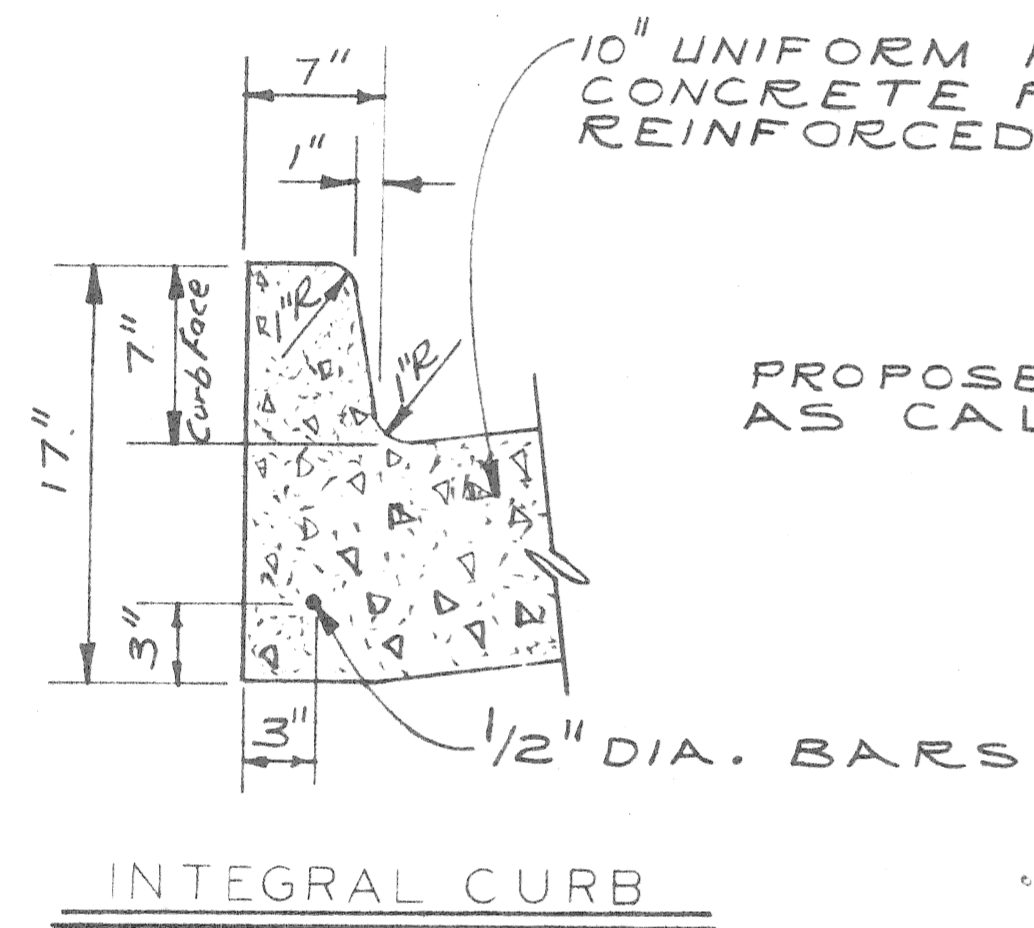
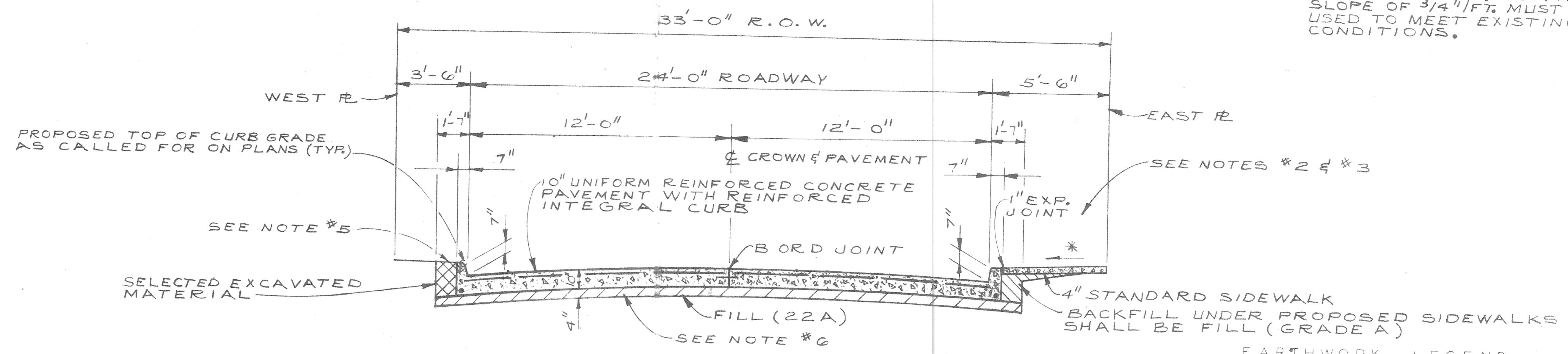
PLANS PREPARED BY
 CITY ENGINEERING DEPARTMENT

RECOMMENDED FOR APPROVAL	<i>W. H. H. H.</i>	7/15/88
ENGINEER OF INSPECTION		DATE
RECOMMENDED FOR APPROVAL	<i>W. H. H. H.</i>	
ENGINEER OF STREETS		DATE
APPROVED	<i>E. M. Kennedy</i>	
DEPUTY DIRECTOR		DATE
APPROVED		
DIRECTOR		DATE

ISSUED FOR BIDS 7/15/88
 DATE MAY , 1988 DRWG. NO. 1 OF 19

CONTRACT # 6050-10B w/ ADDN. #1 CONNER LANE

* SIDEWALK SLOPES ARE TO BE 3/8" / FT. UNLESS THE ENGINEER DETERMINES THAT A MINIMUM SLOPE OF 1/4" / FT. OR A MAXIMUM SLOPE OF 3/4" / FT. MUST BE USED TO MEET EXISTING CONDITIONS.

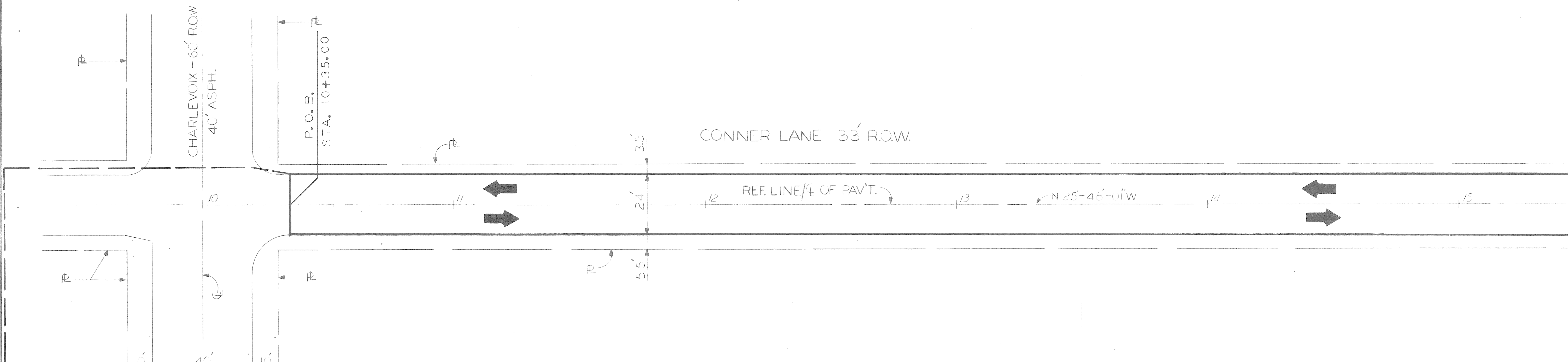
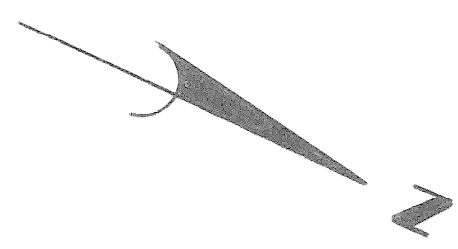


THICKENED EDGE TRANSITION FROM 10" TO 12" PAVEMENT (TO BE CONSTRUCTED AT A TRANSVERSE EXPANSION JOINT AT STA. 29+36.12) (ADD.#)

- GENERAL NOTES:**
- The proposed curb shall be Integral Curb (See Detail this sheet) with Concrete Curb Detail "X" as an alternate. Regardless of construction method, the proposed curb shall be paid for as "10" Uniform Reinforced Concrete Pavement with Reinforced Integral Curb".
 - Place 4" standard sidewalk to face of building where building fronts on property line or as determined by the Engineer.
 - Where existing fence encroaches into East margin, sawcut existing sidewalk at existing fence. Remove and replace 2'± of existing sidewalk between fence and proposed curb.
 - Proposed East-West Conner Lane pavement may be crowned at center as shown, or may be sloped transversely in one direction as directed by the Engineer to drain and to match existing ground. (Minimum transverse slope = 0.02 Ft./Ft.).
 - Backfill these areas with Selected Excavated Material, Fill (22A) surfaced with Bituminous, or as otherwise directed by the Engineer to match existing conditions.
 - Transition Fill (22A) Subbase from 4" thickness used in North-South Conner Lane to 24" thickness used in East-West Conner Lane from STA. 29+00 to STA. 29+36. (ADD.#)
 - See Plan and Profile, Sta. 27+14.19 to Sta. 32+55 (Sheet No. 16) for location of transition from curbed to uncurbed pavt.

(ALL SECTIONS NO SCALE)

7/28/88 7/15/88 7/15/88	ADDENDUM No. 1 ISSUED FOR BIDS	DESIGNED BY W. B.	APPROVED <i>William L. Talley</i> ENGINEER OF STREETS	CITY OF DETROIT CITY ENGINEERING DEPARTMENT BUREAUS OF STREETS AND HIGHWAYS.	CONNER LANE RECONSTRUCTION CHARLEVOIX TO CONNER AVE.	SHEET 2 OF 19 SHEETS
COORD	DESCRIPTION	DRAWN BY J. J.	HIGHWAY ENGINEER			CONTRACT NO.
REVISIONS LOCATED BY COORDINATES ON SHEET	DRN CKD APVD DATE	CHECKED BY W. B.				ASSIGNMENT NO.
				TYPICAL CROSS - SECTIONS		DATE MAY 1988



SCALE: 1" = 20'

MATCH LINE STA. 15+50 (SEE SHEET NO. 4)

COORD	DESCRIPTION	DRN	CKD	APVD	DATE
7/15/88	Issued For Bids				

DESIGNED BY	U. P.	APPROVED:	<i>William P. Kelly</i>
DRAWN BY	U. P.	ENGINEER OF STREETS	
TRACED BY		HIGHWAY ENGINEER	
CHECKED BY	W. B.		

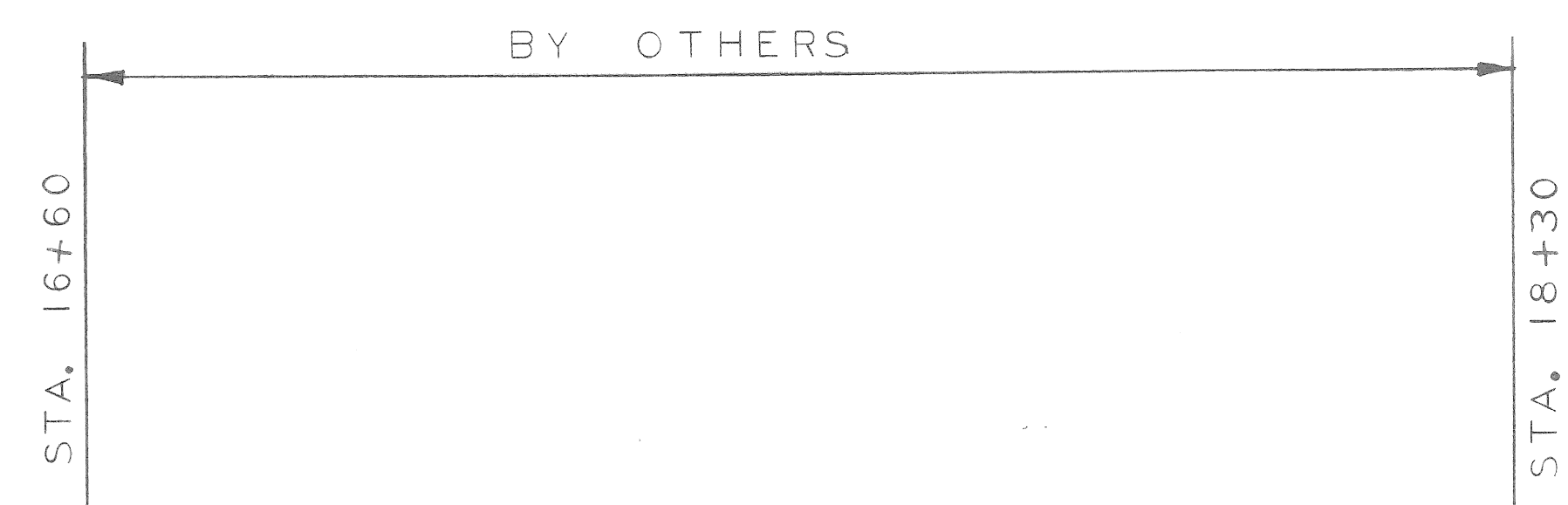
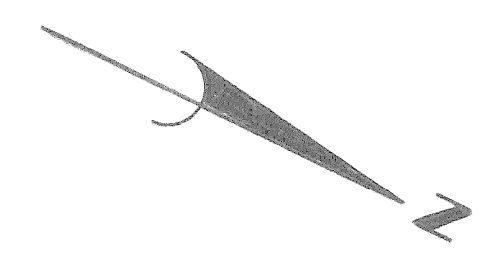
CITY OF DETROIT
 CITY ENGINEERING DEPARTMENT
 BUREAUS OF STREETS AND HIGHWAYS

CONNER LANE RECONSTRUCTION
 CHARLEVOIX TO CONNER AVE.
 ALIGNMENT
 CHARLEVOIX TO STA. 15+50

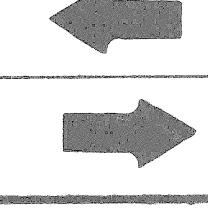
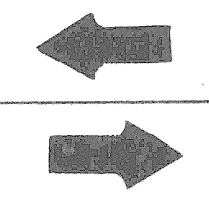
SHEET	3	OF	19	SHEETS
CONTRACT NO.				
ASSIGNMENT NO.				
DATE	MAY, 1988			

MATCH LINE STA. 15+50 (SEE SHEET NO. 3)

MATCH LINE STA. 21+50 (SEE SHEET NO. 5)



CONNER LANE - 33' R.O.W.



R

R

SCALE: 1" = 20'

DESIGNED BY	U. P.	APPROVED	<i>William R. Kelly</i> ENGINEER OF STREETS
DRAWN BY	J. J.	HIGHWAY ENGINEER	
TRACED BY			
CHECKED BY	W. B.		

CITY OF DETROIT
CITY ENGINEERING DEPARTMENT
BUREAUS OF STREETS AND HIGHWAYS

CONNER LANE RECONSTRUCTION
CHARLEVOIX TO CONNER AVE.
ALIGNMENT
STA. 15+50 TO STA. 21+50

SHEET 4 OF 19 SHEETS
CONTRACT NO.
ASSIGNMENT NO.
DATE MAY, 1988

MATCH LINE STA. 21+50 (SEE SHT. NO. 4)

MATCH LINE STA. 27+14.19 (SEE SHT. NO. 6)

CONNER LANE - 33' R.O.W.

BY OTHERS

STA. 25+25

22

23

24

25

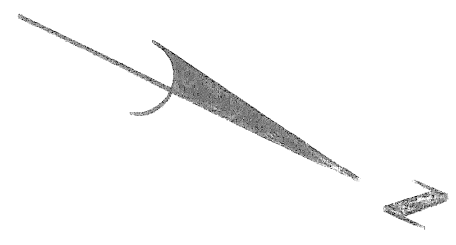
26

27

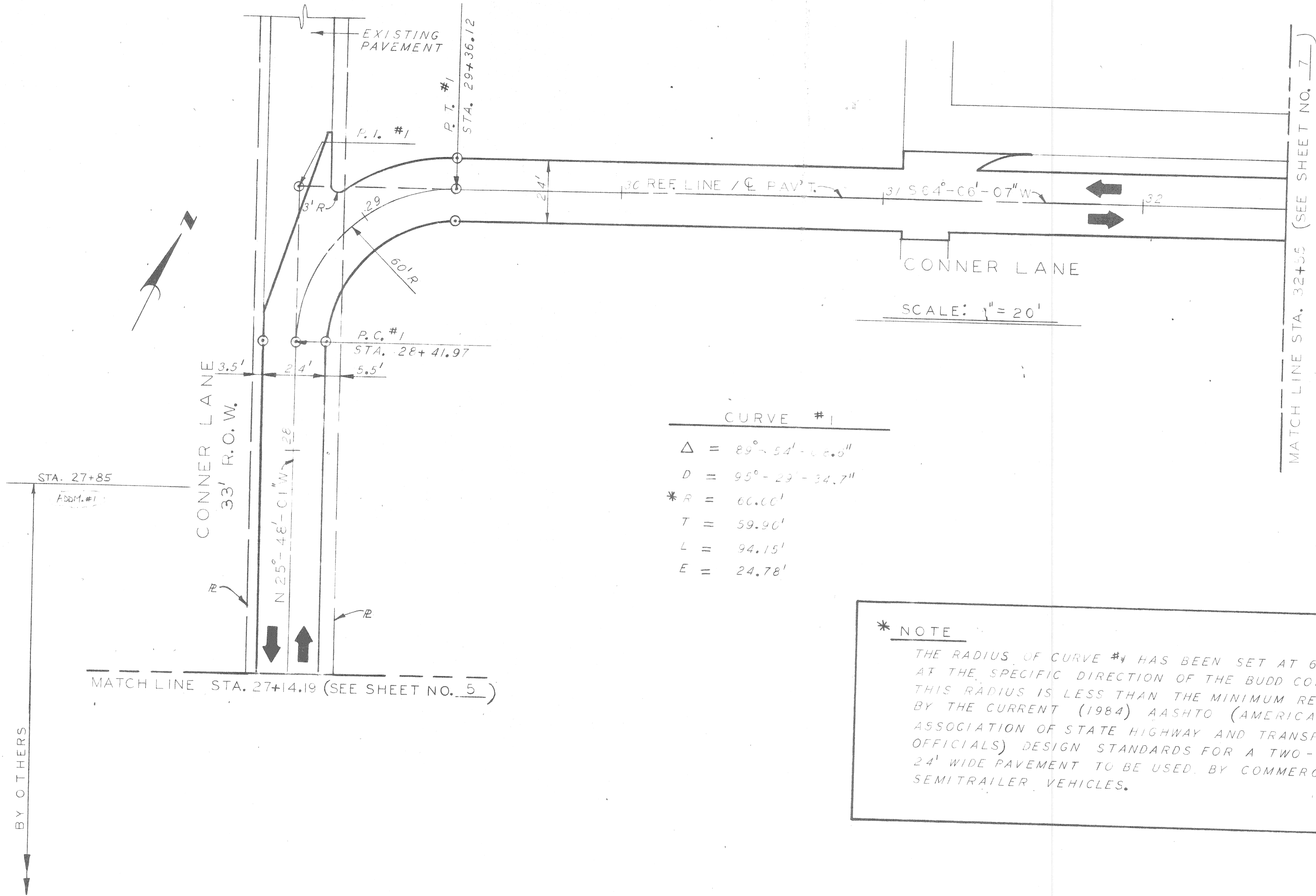
SCALE : 1"=20'

REF. LINE/C PAV'T

N 25°-48'-01" W



<table border="1"> <tr><td>7/15/88</td><td>ISSUED FOR BIDS</td></tr> <tr><td>COORD</td><td>DESCRIPTION</td></tr> <tr><td>DRN</td><td>CHKD</td></tr> <tr><td>APVD</td><td>DATE</td></tr> </table>		7/15/88	ISSUED FOR BIDS	COORD	DESCRIPTION	DRN	CHKD	APVD	DATE	<table border="1"> <tr><td>DESIGNED BY</td><td>S. J.</td></tr> <tr><td>DRAWN BY</td><td>S. J.</td></tr> <tr><td>TRACED BY</td><td></td></tr> <tr><td>CHECKED BY</td><td>W. B.</td></tr> </table>	DESIGNED BY	S. J.	DRAWN BY	S. J.	TRACED BY		CHECKED BY	W. B.	<table border="1"> <tr><td>APPROVED:</td><td><i>William L. Kelly</i></td></tr> <tr><td>ENGINEER OF STREETS</td><td></td></tr> <tr><td>HIGHWAY ENGINEER</td><td></td></tr> </table>	APPROVED:	<i>William L. Kelly</i>	ENGINEER OF STREETS		HIGHWAY ENGINEER		<p align="center">CITY OF DETROIT CITY ENGINEERING DEPARTMENT BUREAUS OF STREETS AND HIGHWAYS</p>	<p align="center">CONNER LANE RECONSTRUCTION CHARLEVOIX TO CONNER AVE.</p> <p align="center">ALIGNMENT STA. 21+50 TO STA. 27+14.19</p>	<table border="1"> <tr><td>SHEET 5 OF 19 SHEETS</td></tr> <tr><td>CONTRACT NO.</td></tr> <tr><td>ASSIGNMENT NO.</td></tr> <tr><td>DATE MAY, 1988</td></tr> </table>	SHEET 5 OF 19 SHEETS	CONTRACT NO.	ASSIGNMENT NO.	DATE MAY, 1988
7/15/88	ISSUED FOR BIDS																															
COORD	DESCRIPTION																															
DRN	CHKD																															
APVD	DATE																															
DESIGNED BY	S. J.																															
DRAWN BY	S. J.																															
TRACED BY																																
CHECKED BY	W. B.																															
APPROVED:	<i>William L. Kelly</i>																															
ENGINEER OF STREETS																																
HIGHWAY ENGINEER																																
SHEET 5 OF 19 SHEETS																																
CONTRACT NO.																																
ASSIGNMENT NO.																																
DATE MAY, 1988																																

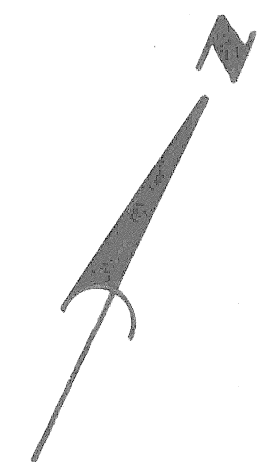


CURVE #1	
Δ	$= 89^{\circ}-54'-00.5''$
D	$= 95^{\circ}-29'-34.7''$
* R	$= 60.00'$
T	$= 59.90'$
L	$= 94.15'$
E	$= 24.78'$

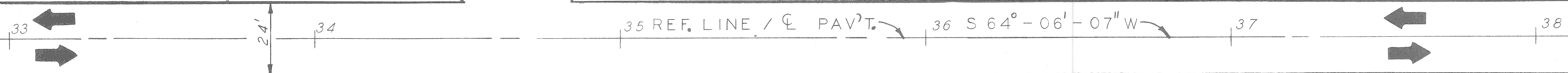
*** NOTE**
 THE RADIUS OF CURVE #1 HAS BEEN SET AT 60.00' AT THE SPECIFIC DIRECTION OF THE BUDD COMPANY. THIS RADIUS IS LESS THAN THE MINIMUM REQUIRED BY THE CURRENT (1984) AASHTO (AMERICAN ASSOCIATION OF STATE HIGHWAY AND TRANSPORTATION OFFICIALS) DESIGN STANDARDS FOR A TWO-DIRECTIONAL, 24' WIDE PAVEMENT TO BE USED BY COMMERCIAL SEMITRAILER VEHICLES.

7/28/88 AMENDMENT No. 1 7/5/88 ISSUED FOR BIDS		DESIGNED BY S. J.	APPROVED <i>William L. Kelly</i> ENGINEER OF STREETS	CITY OF DETROIT CITY ENGINEERING DEPARTMENT BUREAUS OF STREETS AND HIGHWAYS	CONNER LANE RECONSTRUCTION CHARLEVOIX TO CONNER AVE.	SHEET 6 OF 19 SHEETS
REVISIONS LOCATED BY COORDINATES ON SHEET		DRAWN BY U. P.	HIGHWAY ENGINEER			CONTRACT NO.
		CHECKED BY W. B.			ALIGNMENT STA. 27+14.19 TO STA. 32+55	ASSIGNMENT NO. DATE MAY 1988

MATCH LINE STA. 32+55 (SEE SHEET NO. 6)



CONNER LANE



SCALE: 1"=20'

P.O.E.
STA. 38+55

COORD	DESCRIPTION	DRN	CRD	APVD	DATE
7/15/88	Issued For Bids				
REVISIONS LOCATED BY COORDINATES ON SHEET					

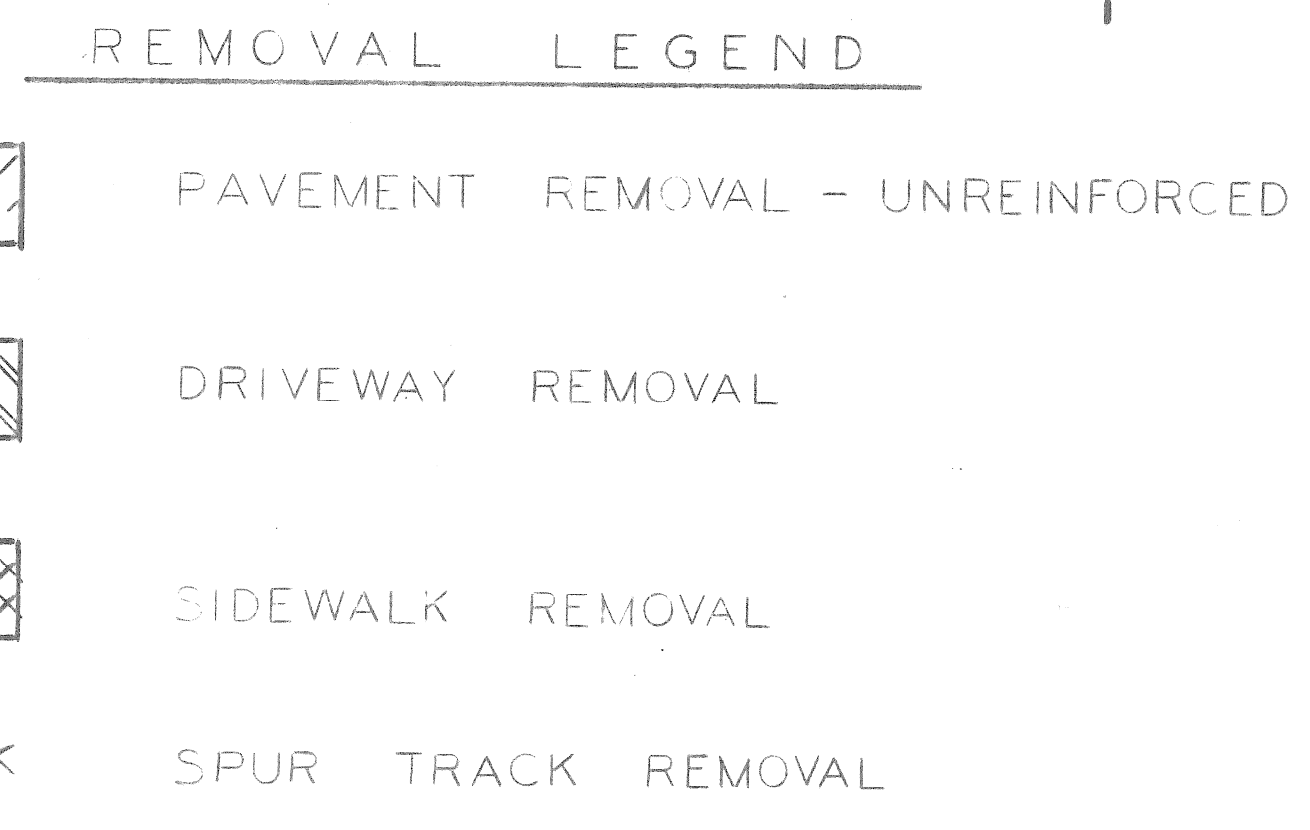
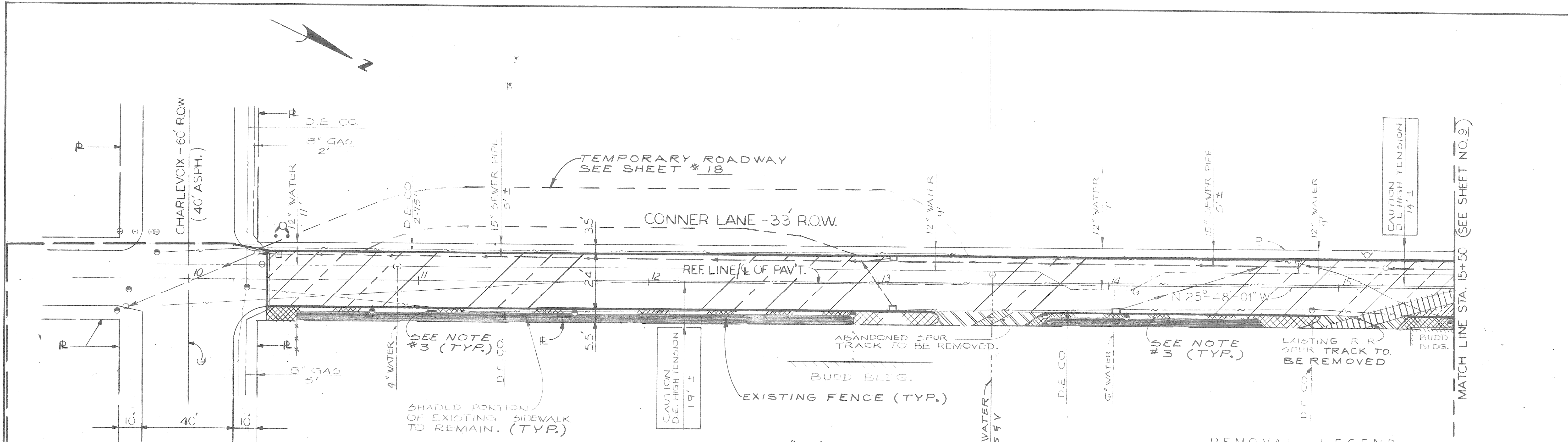
DESIGNED BY	S. J.	APPROVED:	<i>William P. Kelly</i>
DRAWN BY	J. J.	ENGINEER OF STREETS	
TRACED BY		HIGHWAY ENGINEER	
CHECKED BY	W. B.		

CITY OF DETROIT
CITY ENGINEERING DEPARTMENT
BUREAUS OF STREETS AND HIGHWAYS

CONNER LANE RECONSTRUCTION
CHARLEVOIX TO CONNER AVE.

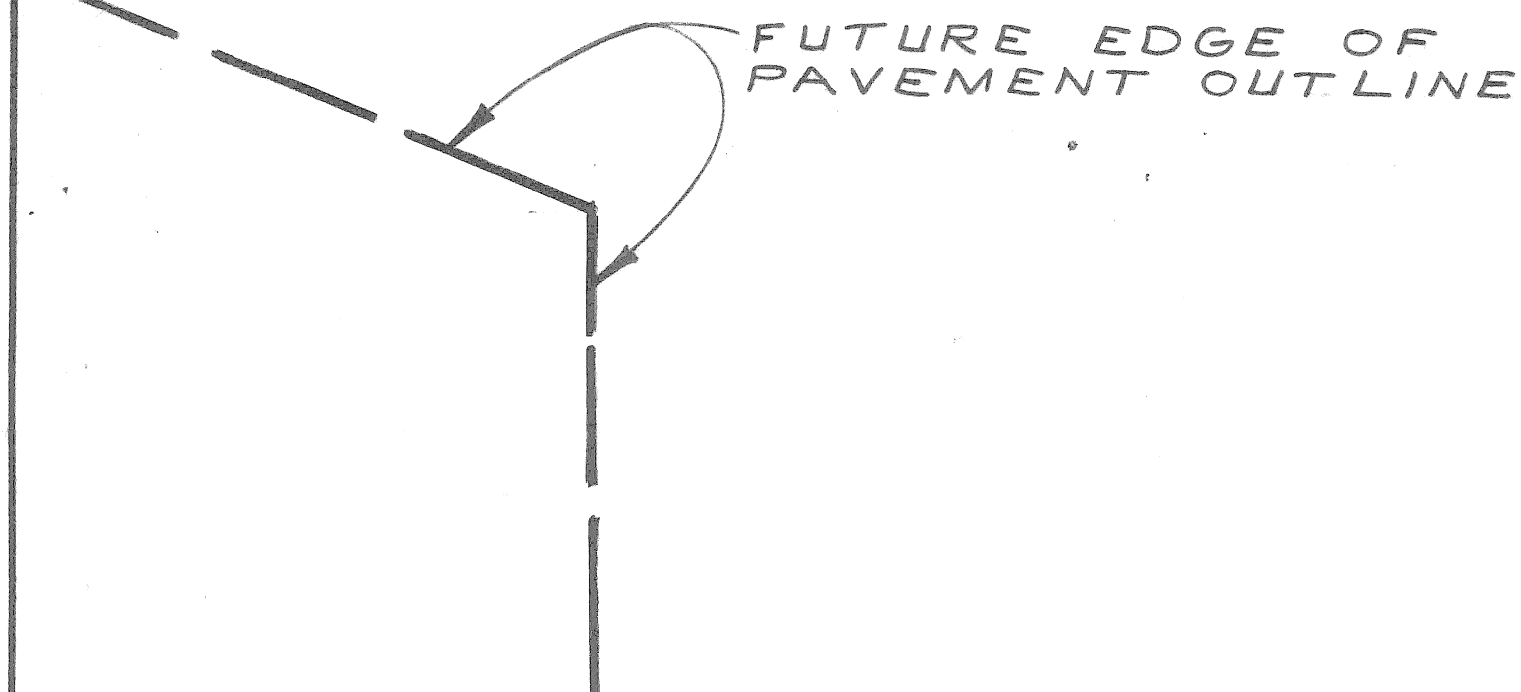
ALIGNMENT
STA. 32+55 TO STA. 38+55

SHEET 7 OF 19 SHEETS
CONTRACT NO.
ASSIGNMENT NO.
DATE MAY, 1988



- NOTES:
- For Utility Legend and Symbols see sht. # 19.
 - Locations of existing utility lines are based on the best available records and are not guaranteed for completeness or accuracy.
 - Sawcut sidewalk at existing fence. Remove and replace 2' ± of existing sidewalk between fence and curb.

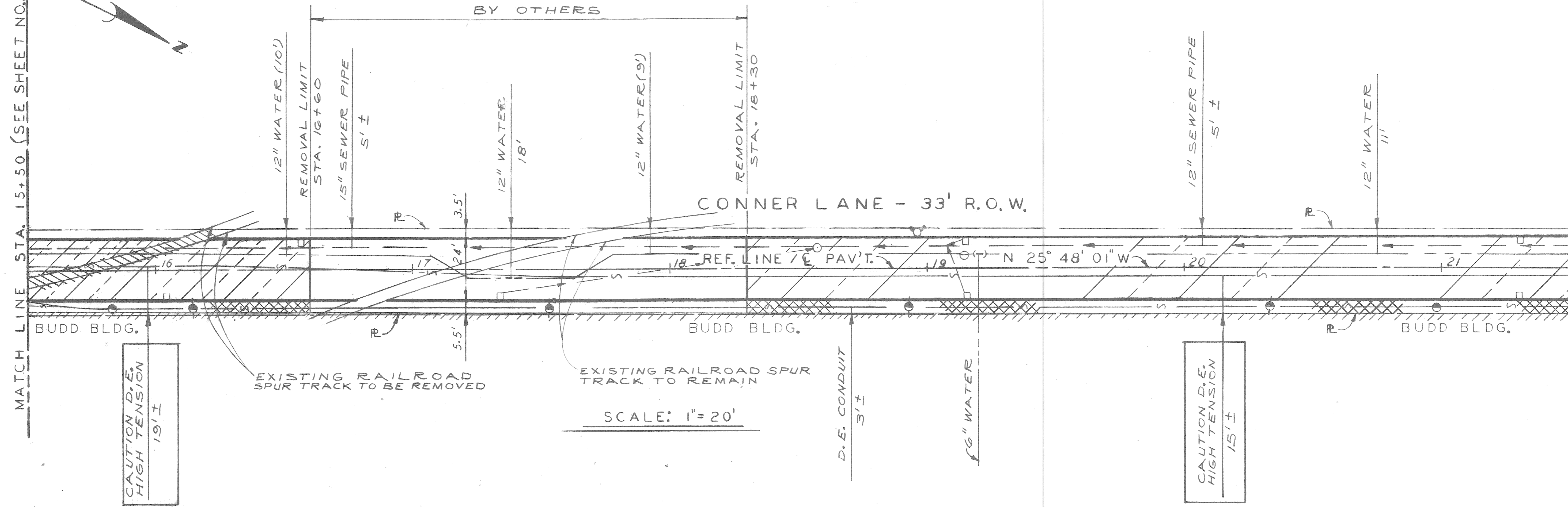
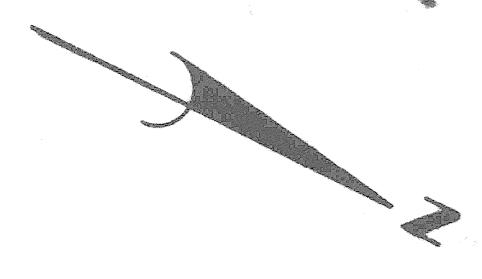
CALL MISS.DIG
48 HOURS PRIOR TO
CONSTRUCTION 647-7344



REVISIONS LOCATED BY COORDINATES ON SHEET COORD. DESCRIPTION ORN CK'D AP'D DATE		DESIGNED BY S.J. DRAWN BY S.J. TRACED BY CHECKED BY V.B.	APPROVED <i>William S. Kelly</i> ENGINEER OF STREETS HIGHWAY ENGINEER	CITY OF DETROIT CITY ENGINEERING DEPARTMENT BUREAU OF STREETS AND HIGHWAYS	CONNER LANE RECONSTRUCTION CHARLEVOIX TO CONNER AVE. REMOVAL - UTILITIES CHARLEVOIX TO STA. 15+50	SHEET 8 OF 19 SHEETS CONTRACT NO. ASSIGNMENT NO. DATE MAY 1988
--	--	---	--	--	--	---

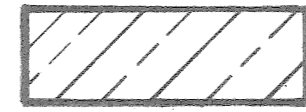



MATCH LINE STA. 15+50 (SEE SHEET NO. 8)

MATCH LINE STA. 21+50 (SEE SHEET NO. 10)



SCALE: 1" = 20'

REMOVAL LEGEND

-  PAVEMENT REMOVAL - UNREINFORCED
-  DRIVEWAY REMOVAL
-  SIDEWALK REMOVAL
-  SPUR TRACK REMOVAL

NOTES:

1. For Utility Legend and Symbols, See Sht. # 19.
2. Location of existing utility lines are based on the best available records and are not guaranteed for completeness or accuracy.

CALL MISS DIG
48 HOURS PRIOR TO
CONSTRUCTION 647-7344

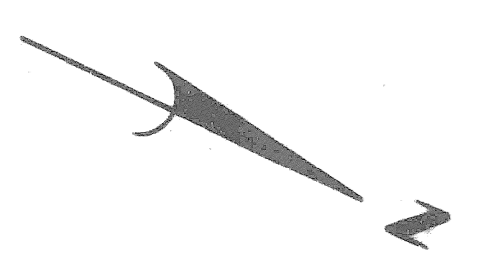
DESIGNED BY	S. J.	APPROVED	<i>William L. Talley</i>
DRAWN BY	J. J.	ENGINEER OF STREETS	
TRACED BY		HIGHWAY ENGINEER	
CHECKED BY	S. J.		

CITY OF DETROIT
CITY ENGINEERING DEPARTMENT
BUREAUS OF STREETS AND HIGHWAYS

CONNER LANE RECONSTRUCTION
CHARLEVOIX TO CONNER AVE.

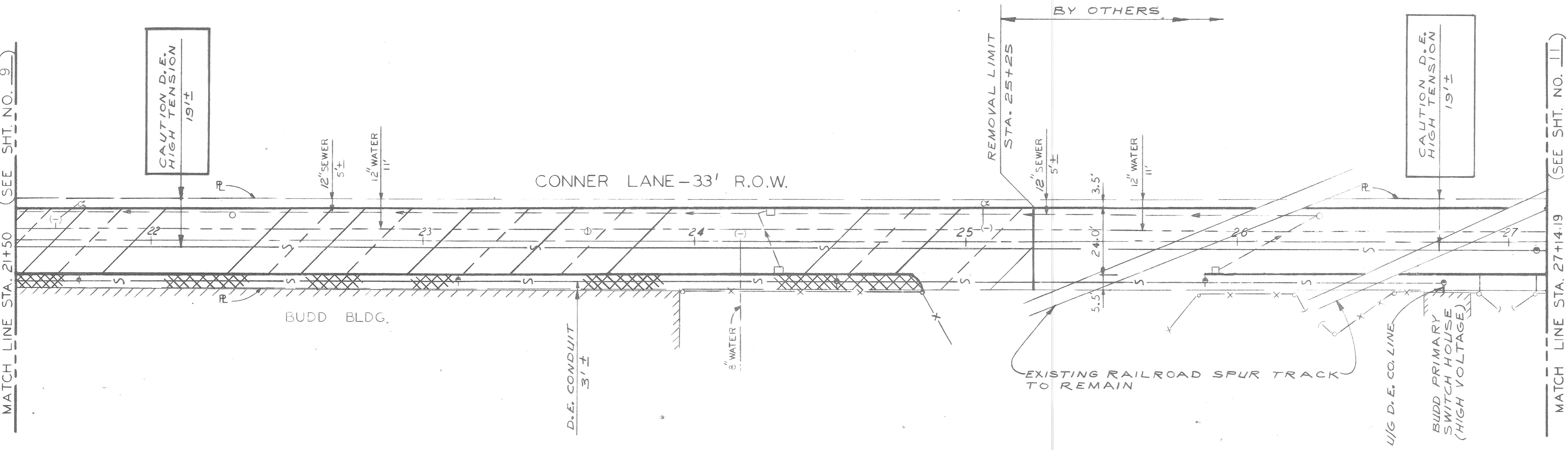
REMOVAL - UTILITIES
STA. 15+50 TO STA. 21+50

SHEET 9 OF 19 SHEETS
CONTRACT NO.
ASSIGNMENT NO.
DATE MAY, 1988



MATCH LINE STA. 21+50 (SEE SHT. NO. 9)

MATCH LINE STA. 27+14.19 (SEE SHT. NO. 11)



CONNER LANE - 33' R.O.W.

BUDD BLDG.

D.E. CONDUIT 3'±

REMOVAL LIMIT STA. 25+25

BY OTHERS

EXISTING RAILROAD SPUR TRACK TO REMAIN

U/G D.E. CO. LINE

BUDD PRIMARY SWITCH HOUSE (HIGH VOLTAGE)

REMOVAL LEGEND

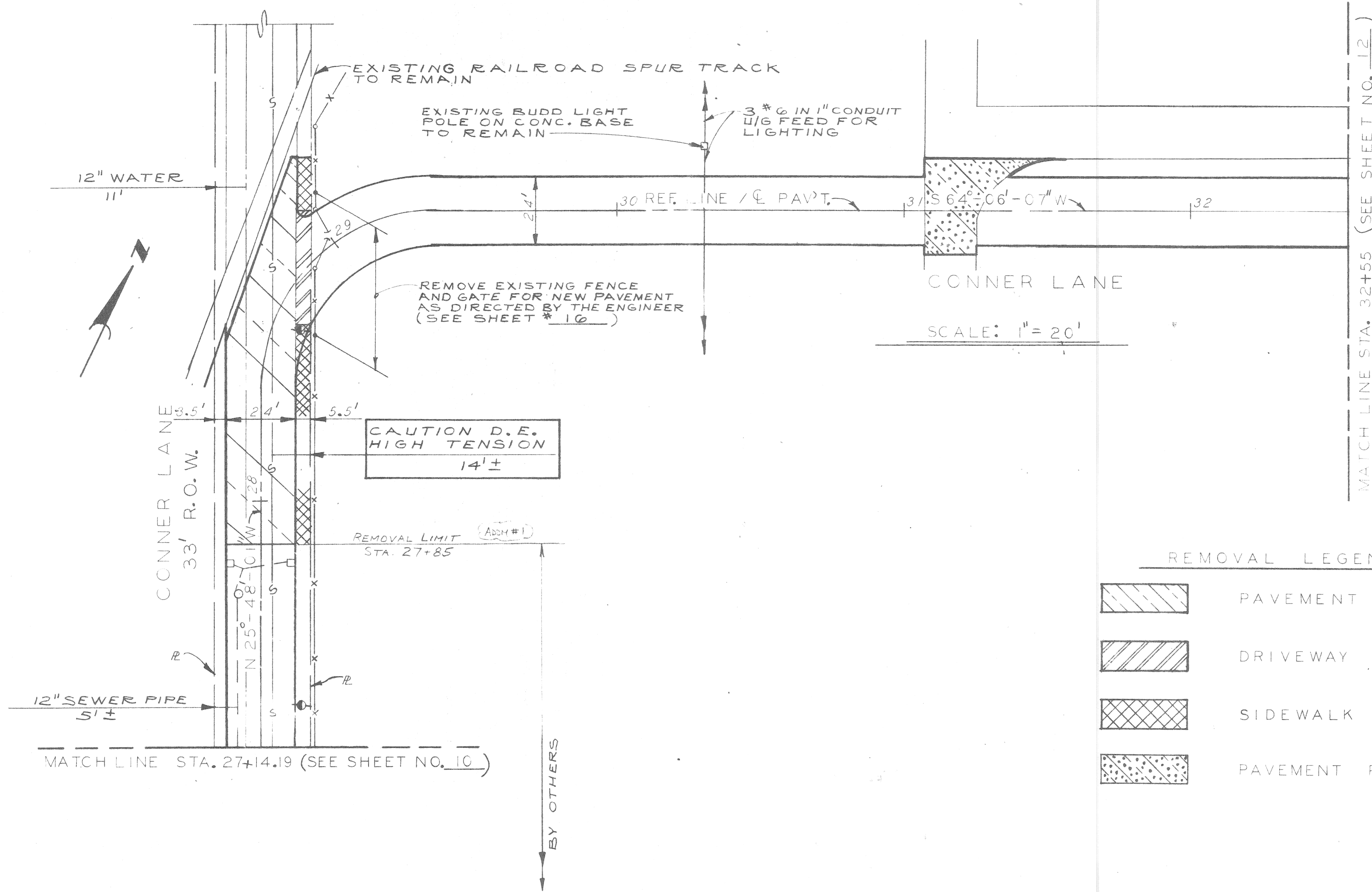
- PAVEMENT REMOVAL - UNREINFORCED
- DRIVEWAY REMOVAL
- SIDEWALK REMOVAL

CALL MISS DIG
48 HOURS PRIOR TO
CONSTRUCTION 647-7344

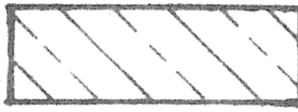



NOTES:

1. For Utility Legend and Symbols, See Sht. # 19
2. Location of existing utility lines are based on the best available records and are not guaranteed for completeness or accuracy.

	REFERENCE DRAWINGS DESIGNED BY S. J. DRAWN BY U. P. TRACED BY CHECKED BY W. B. / S. J.	APPROVED: ENGINEER OF STREETS HIGHWAY ENGINEER	CITY OF DETROIT CITY ENGINEERING DEPARTMENT BUREAU OF STREETS AND HIGHWAYS	CONNER LANE RECONSTRUCTION CHARLEVOIX TO CONNER AVE. REMOVAL - UTILITIES STA. 21+50 TO STA. 27+14.19	SHEET 10 OF 19 SHEETS CONTRACT NO. ASSIGNMENT NO. DATE MAY, 1988
--	--	--	---	---	---



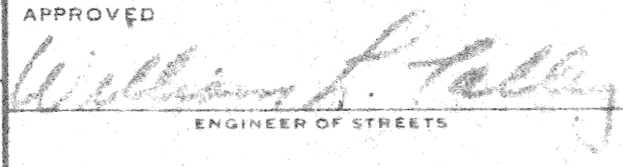
REMOVAL LEGEND

-  PAVEMENT REMOVAL - UNREINFORCED
-  DRIVEWAY REMOVAL
-  SIDEWALK REMOVAL
-  PAVEMENT REMOVAL - REINFORCED

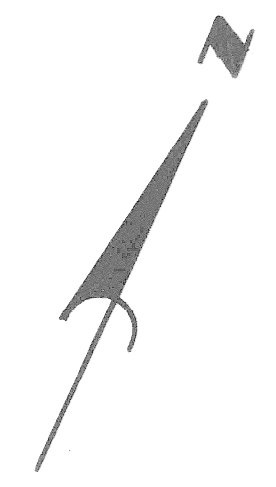
NOTES:

1. For Utility Legend and Symbols, See Sht. # 19.
2. Location of existing utility lines are based on the best available records and are not guaranteed for completeness or accuracy.
3. Remove existing bituminous pavement as required for new construction from STA. 28+90 to STA. 31+07 (thickness of exstg bit. pvmt. is 3 1/2")

CALL MIBS DIG
48 HOURS IN ADVANCE
CONTRACT NO. 1344

REVISIONS LOCATED BY COORDINATES ON SHEET 7/28/86 ADDENDUM No. 1 7/15/88 ISSUED FOR BIDS		DESIGNED BY S. J. / W. B. DRAWN BY J. J. TRACED BY CHECKED BY W. B.	APPROVED  ENGINEER OF STREETS HIGHWAY ENGINEER	CITY OF DETROIT CITY ENGINEERING DEPARTMENT BUREAUS OF STREETS AND HIGHWAYS	CONNER LANE RECONSTRUCTION CHARLEVOIX TO CONNER AVE. REMOVAL - UTILITIES STA. 27+14.19 TO STA. 32+55	SHEET 11 OF 19 SHEETS CONTRACT NO. ASSIGNMENT NO. DATE MAY, 1988
--	--	--	---	---	---	---

MATCH LINE STA. 32+55 (SEE SHEET NO. 11)



RELOCATE BUDD PRIVATE STREET LIGHT ARM ON WOOD POLE W/O.H. LINE FEEDING FROM SOUTH AND CONTINUING NORTH.

30" SEWER

REMOVE 2 CONC. FILLED STEEL GUARD POSTS (INCIDENTAL TO PAVEMENT REMOVAL)

CONNER LANE

35 REF. LINE / ϕ PAV²T. 36 S 64°-06'-07" W 37 38

U/G CONDUITS W/POWER AND PHONE

SCALE: 1"=20'

RECONSTRUCT CABLE VAULT C.V. 50-2 FOR 480 V. POWER AND PHONE. PROVIDE NEW M.H. COVER.

P.O.E. STA. 38+55


REMOVAL LEGEND

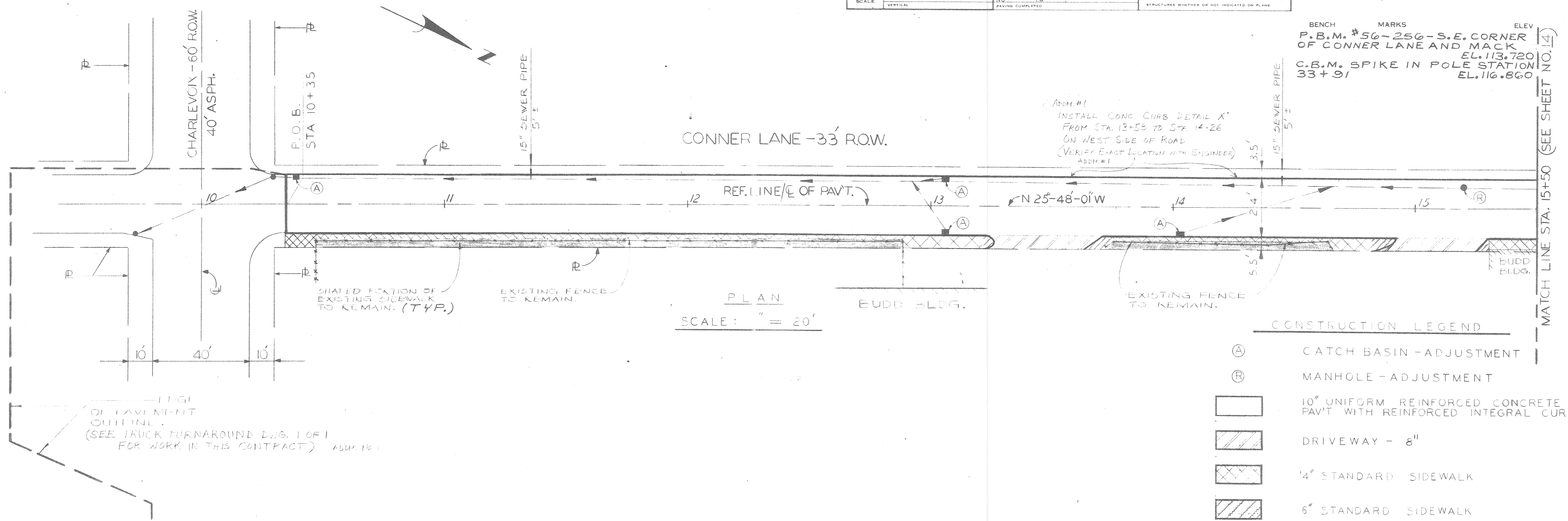
 PAVEMENT REMOVAL - REINFORCED

CALL MISS DIG 48 HOURS PRIOR TO CONSTRUCTION 647-7344

NOTES:

1. For Utility Legend and Symbols, See Sht. # 19.
2. Location of existing utility lines are based on the best available records and are not guaranteed for completeness or accuracy.

7/15/88 ISSUED FOR BIDS <small>COORD DESCRIPTION DRN CK'D AP'VD DATE</small>		DESIGNED BY S. J. DRAWN BY J. J. TRACED BY CHECKED BY W. B.	APPROVED:  ENGINEER OF STREETS HIGHWAY ENGINEER	CITY OF DETROIT CITY ENGINEERING DEPARTMENT BUREAUS OF STREETS AND HIGHWAYS	CONNER LANE RECONSTRUCTION CHARLEVOIX TO CONNER AVE. REMOVAL - UTILITIES STA. 32+55 TO STA. 38+55	SHEET 12 OF 19 SHEETS CONTRACT NO. ASSIGNMENT NO. DATE MAY, 1988
REVISIONS LOCATED BY COORDINATES ON SHEET						



PLAN
SCALE: 1" = 20'

CONSTRUCTION LEGEND

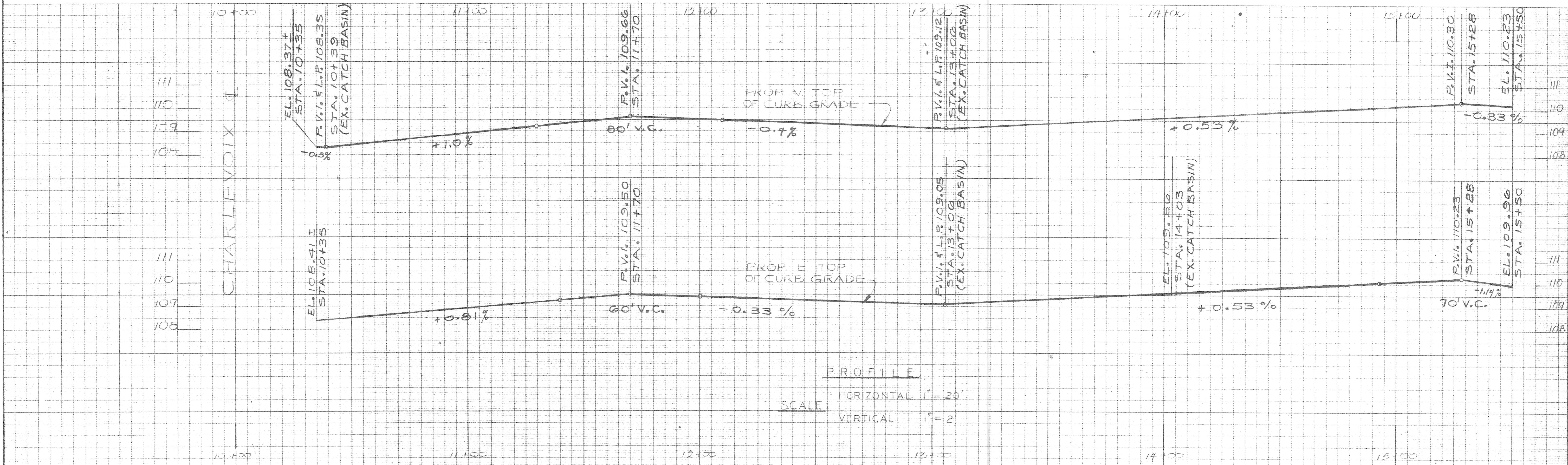
(A)	CATCH BASIN - ADJUSTMENT
(R)	MANHOLE - ADJUSTMENT
[Hatched Box]	10" UNIFORM REINFORCED CONCRETE PAV'T WITH REINFORCED INTEGRAL CURB
[Hatched Box]	DRIVEWAY - 8"
[Hatched Box]	4" STANDARD SIDEWALK
[Hatched Box]	6" STANDARD SIDEWALK

EDGE OF PAVEMENT OUTLINE (SEE TRUCK TURNAROUND DWG. 1 OF 1 FOR WORK IN THIS CONTRACT) ADDM. 10

ADDM. #1
INSTALL CONC CURB DETAIL X' FROM STA. 13+53 TO STA. 14+26 ON WEST SIDE OF ROAD (VERIFY EXACT LOCATION WITH ENGINEER) ADDM. #1

BENCH MARKS
P.B.M. #56-256-S.E. CORNER OF CONNER LANE AND MACK EL. 113.720
C.B.M. SPIKE IN POLE STATION 33+91 EL. 116.860

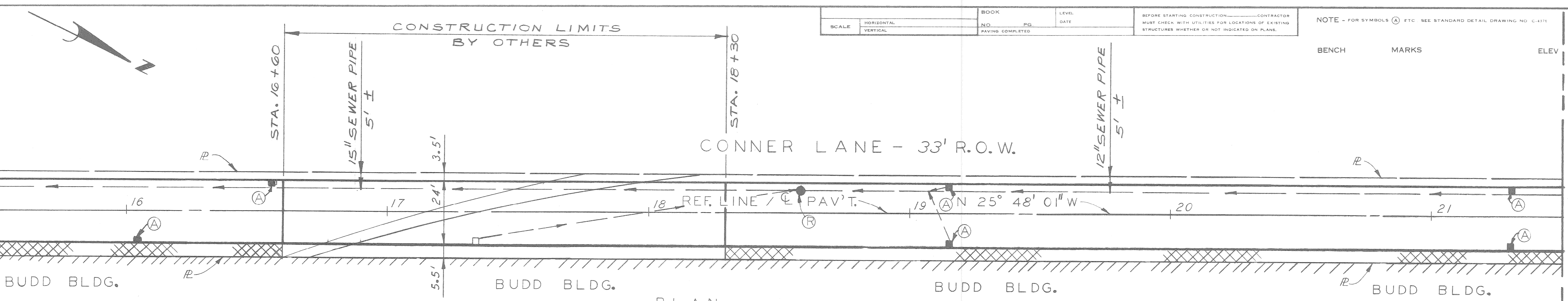
MATCH LINE STA. 15+50 (SEE SHEET NO. 14)



PROFILE
SCALE: HORIZONTAL 1" = 20'
VERTICAL 1" = 2'

7/28/88 7/15/88 ADDITIONAL No. 1 ISSUED FOR BIDS DESCRIPTION DATE DWN CHK APP VD DATE	PLAN	U.P., S.J.	W.B.	APPROVED <i>William J. Kelly</i> ENGINEER OF STREETS HIGHWAY ENGINEER	CITY OF DETROIT CITY ENGINEERING DEPARTMENT BUREAUS OF STREETS AND HIGHWAYS	CONNER LANE RECONSTRUCTION CHARLEVOIX TO CONNER AVE PLAN AND PROFILE CHARLEVOIX TO STA 15+50	INDEX NO.	SHEET 13 OF 19 SHEETS
	ESTIMATE	S.J.	W.B.				CONTRACT NO.	ASSIGNMENT NO.
REVISIONS	FINAL	CHK	REVISE					

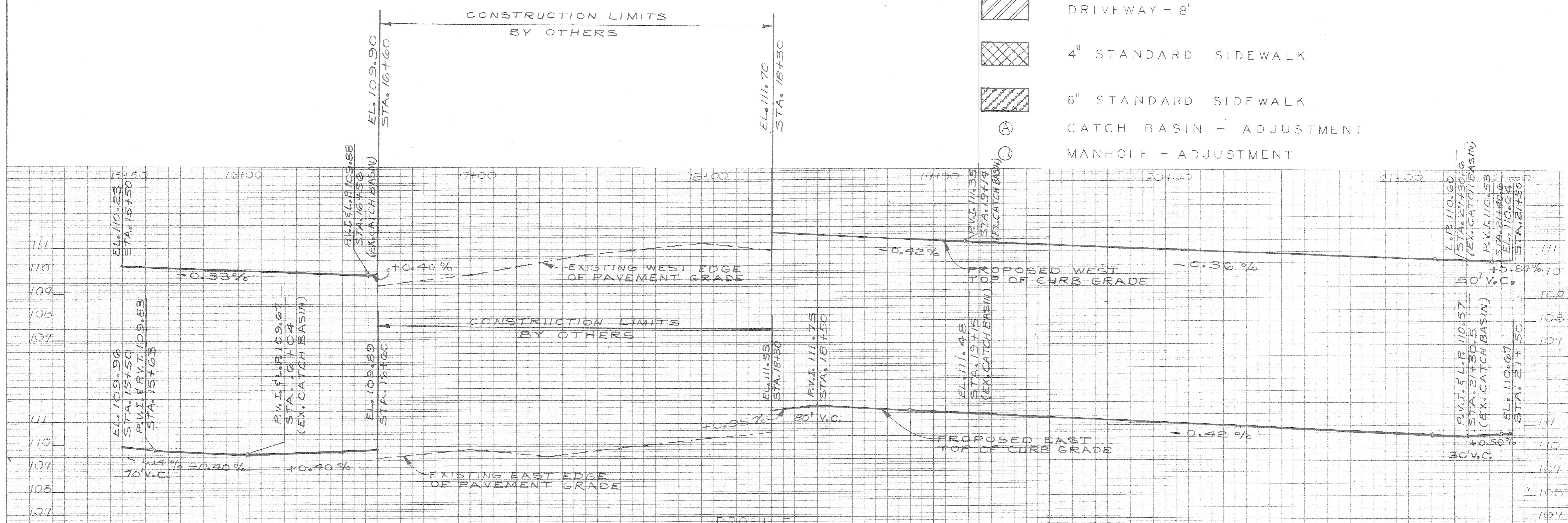
MATCH LINE STA. 15+50 (SEE SHEET NO. 13)



SCALE	HORIZONTAL	VERTICAL	BOOK NO.	PG.	LEVEL DATE	CONTRACTOR	NOTE - FOR SYMBOLS (A) ETC. SEE STANDARD DETAIL DRAWING NO. C-111
							BENCH MARKS

- CONSTRUCTION LEGEND
- 10" UNIFORM REINFORCED CONCRETE PAV'T. WITH REINFORCED INTEGRAL CURB
 - DRIVEWAY - 8"
 - 4" STANDARD SIDEWALK
 - 6" STANDARD SIDEWALK
 - CATCH BASIN - ADJUSTMENT
 - MANHOLE - ADJUSTMENT

MATCH LINE STA. 21+50 (SEE SHEET NO. 15)



15+50	16+00	17+00	18+00	19+00	20+00	21+00	21+50
-------	-------	-------	-------	-------	-------	-------	-------

PLAN	J.J./S.J.	W.B.	APPROVED	<i>William B. ...</i>
GRADE	J.J./S.J.	W.B.	ENGINEER OF STREETS	
ESTIMATE			HIGHWAY ENGINEER	
DESCRIPTION	DN	CK	AP	VO
REVISIONS	CHECK	REVIEW		

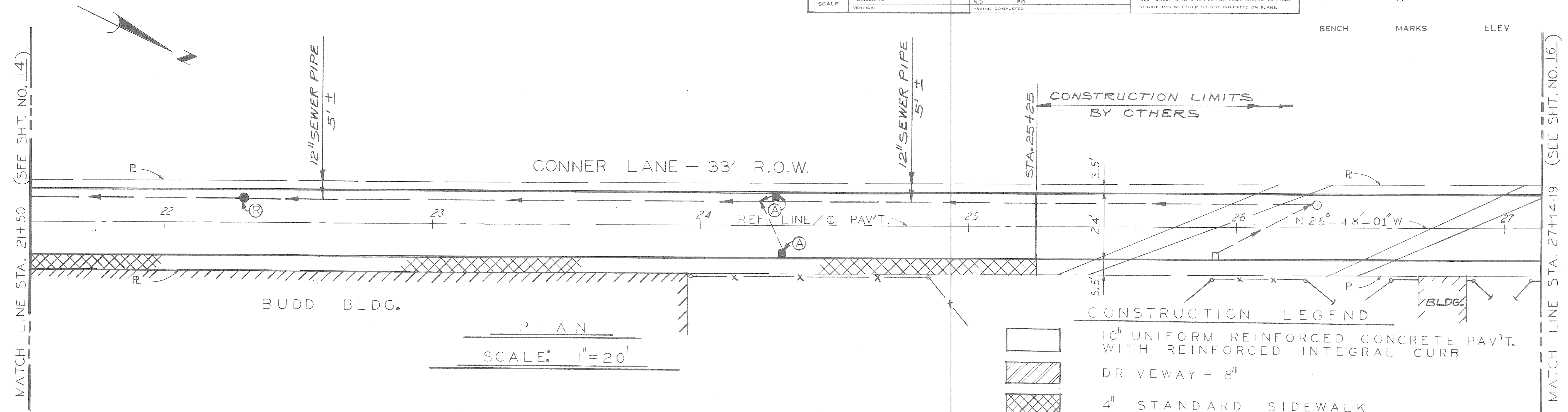
CITY OF DETROIT
CITY ENGINEERING DEPARTMENT
BUREAUS OF STREETS AND HIGHWAYS

CONNER LANE RECONSTRUCTION
CHARLEVOIX TO CONNER AVE.
PLAN AND PROFILE
STA. 15+50 TO STA. 21+50

INDEX NO.	SHEET 14 OF 19 SHEETS
CONTRACT NO.	
ASSIGNMENT NO.	
DATE	MAY, 1988

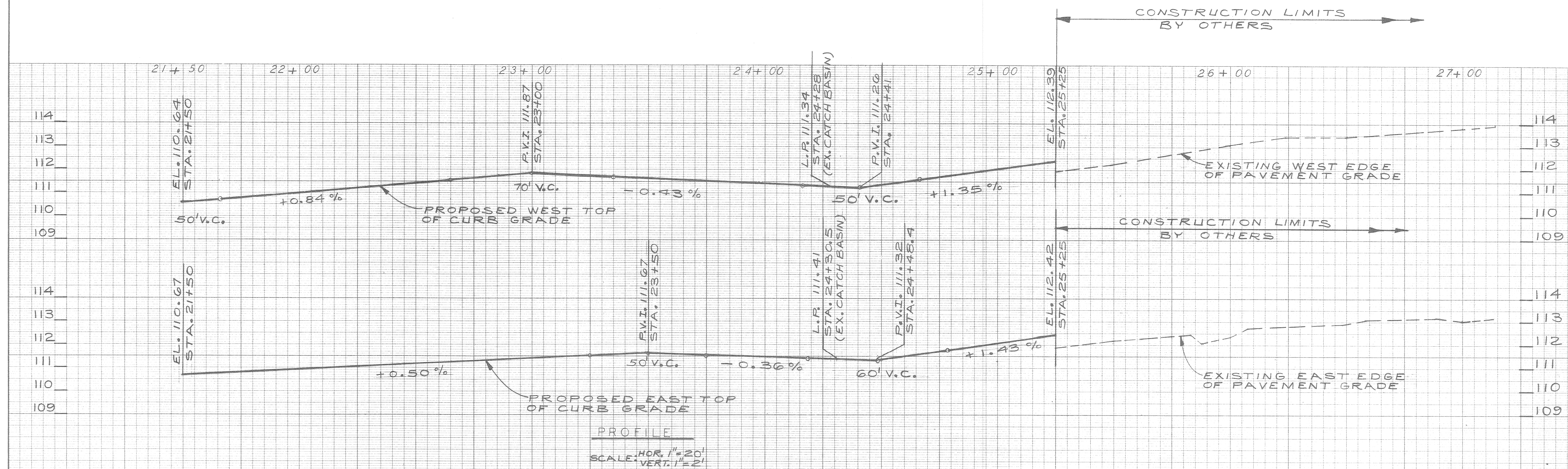
TELEPHONE POST BOARD

7/15/88 ISSUED FOR BIDS



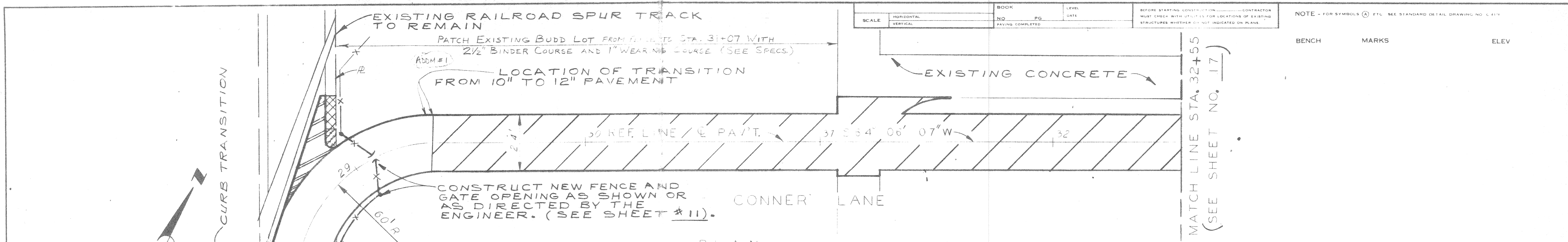
PLAN
SCALE: 1"=20'

- CONSTRUCTION LEGEND
- 10" UNIFORM REINFORCED CONCRETE PAV'T. WITH REINFORCED INTEGRAL CURB
 - DRIVEWAY - 8"
 - 4" STANDARD SIDEWALK
 - CATCH BASIN - ADJUSTMENT
 - MANHOLE - ADJUSTMENT



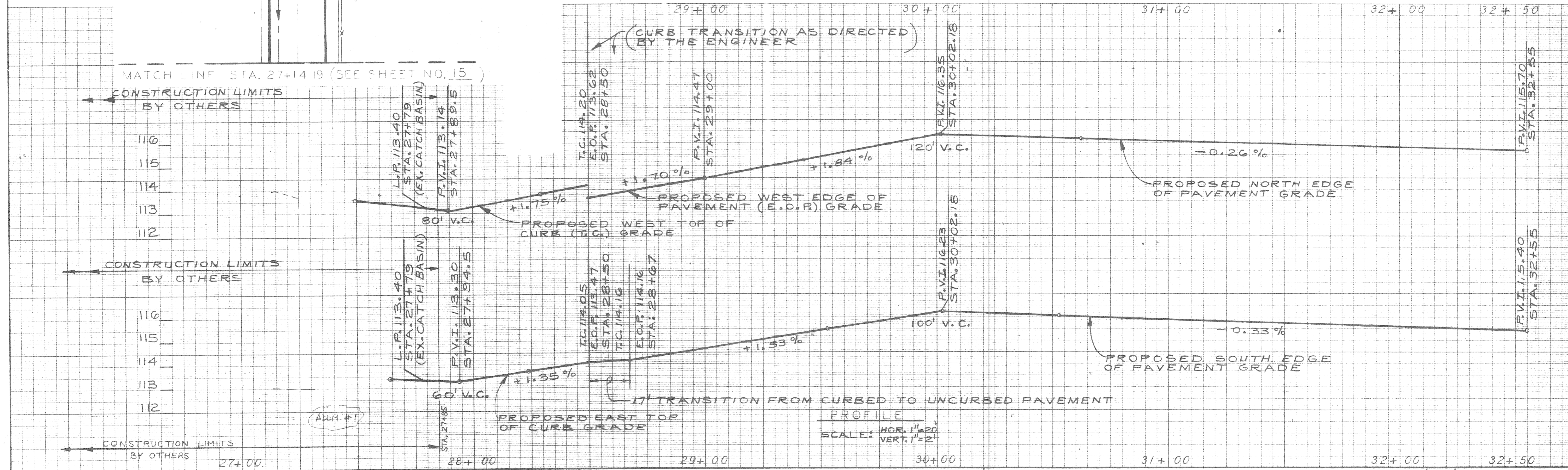
PROFILE
SCALE: HOR. 1"=20' VERT. 1"=2'

	21+50	22+00	23+00	24+00	25+00	26+00	27+00
	BY S.J./J.J.		CHECKED BY W.B.		APPROVED: <i>William K. Galley</i>		
	GRADE S.J./J.J.		W.B.		ENGINEER OF STREETS		
	ESTIMATE		HIGHWAY ENGINEER		CITY OF DETROIT CITY ENGINEERING DEPARTMENT BUREAU OF STREETS AND HIGHWAYS		
	FINAL		REVIEW		CONNER LANE RECONSTRUCTION CHARLEVOIX TO CONNER AVE.		
	REVISIONS		DATE		PLAN AND PROFILE STA. 21+50 TO STA. 27+14.19		
	7/15/88 ISSUED FOR BIDS		DATE		CONTRACT NO.		
	DESCRIPTION		DATE		ASSIGNMENT NO.		
	DRN		CK		INDEXED		
	D		D		NO.		
	AP		VD		DATE MAY 1988		
	DATE		DATE		SHEET 15 OF 19 SHEETS		

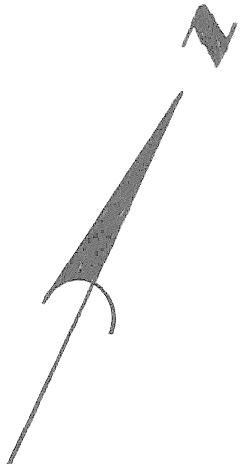


PLAN
 SCALE: 1" = 20'

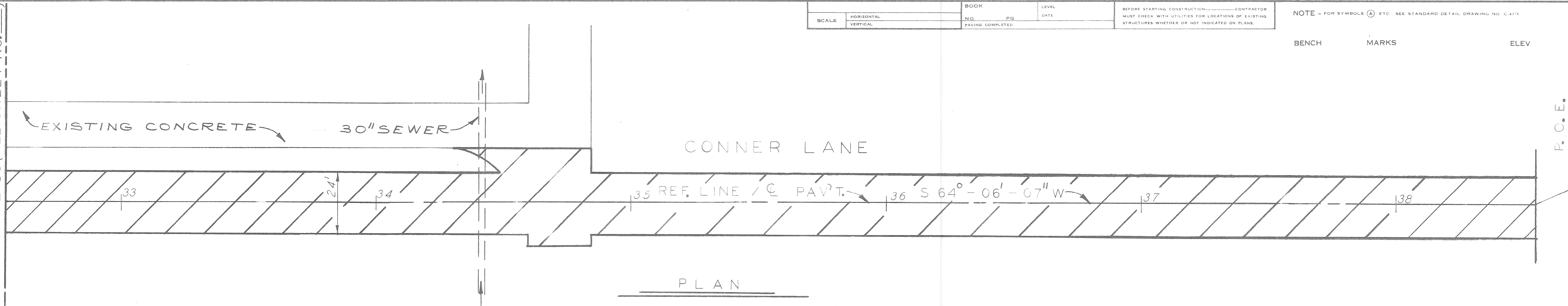
CONSTRUCTION LEGEND	
Ⓐ	CATCH BASIN - ADJUSTMENT
Ⓑ	MANHOLE - ADJUSTMENT
	12" UNIFORM REINFORCED CONCRETE PAVT.
	10" UNIFORM REINFORCED CONCRETE PAVT. WITH REINFORCED INTEGRAL CURB
	8" UNIFORM NON-REINFORCED CONCRETE PAVT. WITH NON-REINFORCED INTEGRAL CURB
	4" STANDARD SIDEWALK
	6" STANDARD SIDEWALK



7/25/88 AMENDUM NO. 1 7/15/88 ISSUED FOR BIDS		REVISIONS DESCRIPTION DATE FINAL CHECK REVIEW		PLAN S. J. W. B. GRADE S. J. W. B. ESTIMATE HIGHWAY ENGINEER	CITY OF DETROIT CITY ENGINEERING DEPARTMENT BUREAU OF STREETS AND HIGHWAYS	CONNER LANE RECONSTRUCTION CHARLEVOIX TO CONNER AVE. PLAN AND PROFILE STA. 27+14.19 TO STA. 32+55	INDEX NO. SHEET 16 OF 19 SHEETS TOPO NO. CONTRACT NO. INDEXED ASSIGNMENT NO. DATE MAY, 1988
--	--	---	--	---	--	--	--



MATCH LINE STA. 32+55 (SEE SHEET NO. 16)

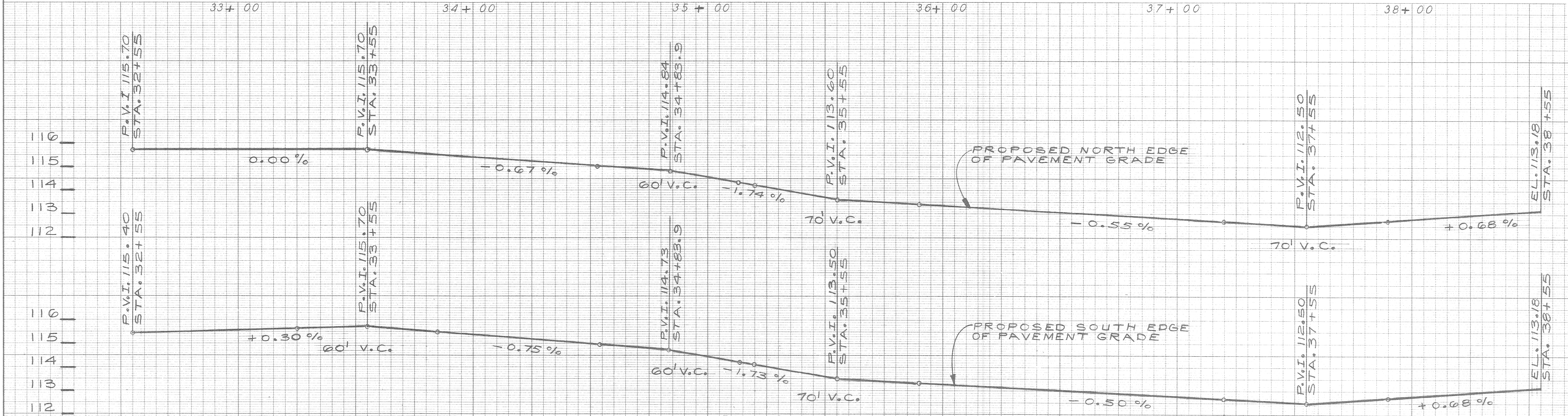


PLAN
SCALE: 1" = 20'

CONSTRUCTION LEGEND

12" UNIFORM REINFORCED CONCRETE PAVEMENT

SCALE		BOOK		LEVEL		NOTE - FOR SYMBOLS (C) ETC. SEE STANDARD DETAIL DRAWING NO. C-119	
HORIZONTAL	VERTICAL	NO.	PG.	DATE			
		PAVING COMPLETED					BENCH MARKS ELEV



PROFILE
SCALE: HOR. 1" = 20'
VERT. 1" = 2'

	BY S. J.	CHECKED BY W. B.	APPROVED: 	
	GRADE J. J.	W. B.	ENGINEER OF STREETS	
	ESTIMATE		HIGHWAY ENGINEER	
	FINAL	CHECK	REVIEW	

CITY OF DETROIT
CITY ENGINEERING DEPARTMENT
BUREAU OF STREETS AND HIGHWAYS

CONNER LANE RECONSTRUCTION
CHARLEVOIX TO CONNER AVE.

PLAN AND PROFILE
STA. 32+55 TO STA. 38+55

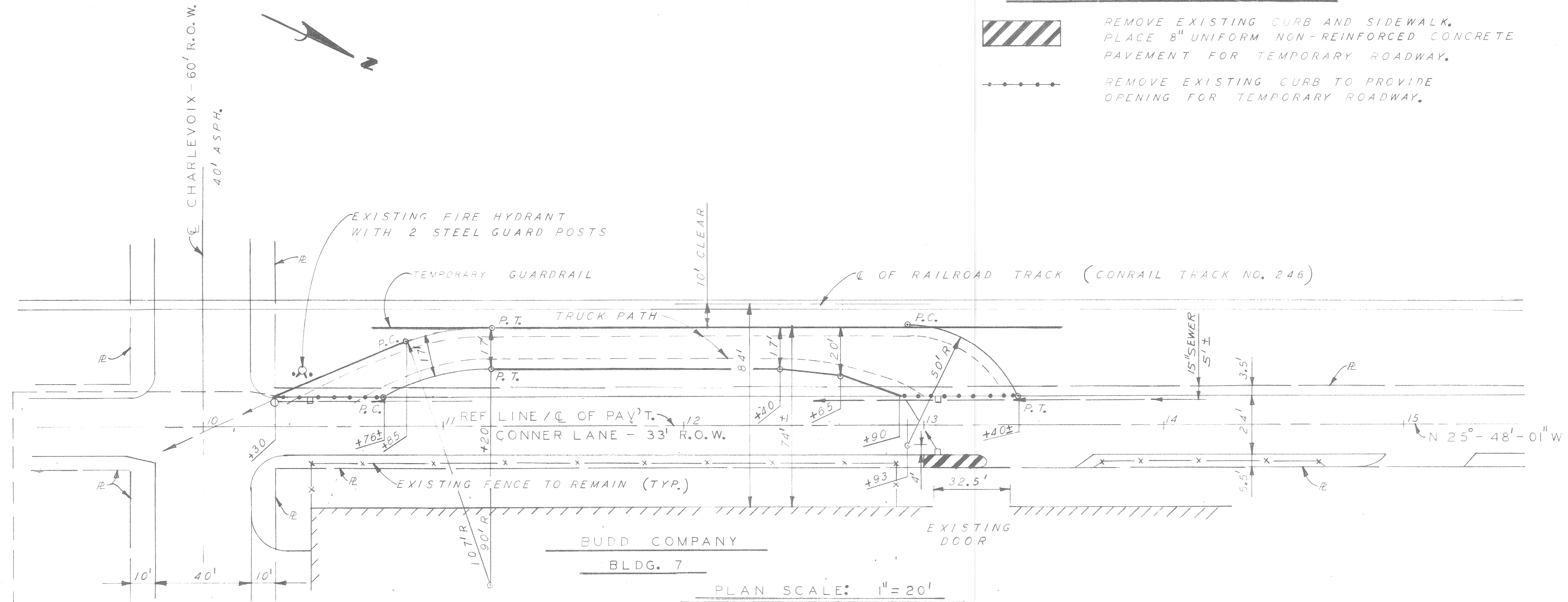
INDEX NO.	SHEET 17 OF 19 SHEETS
CONTRACT NO.	
ASSIGNMENT NO.	
DATE	MAY, 1988

TELEPHONE BOOK

7/15/88 ISSUED FOR BIDS
DESCRIPTION

DR. N.	CK. D.	AP. V.D.	DATE

REVISIONS



LEGEND



REMOVE EXISTING CURB AND SIDEWALK. PLACE 8" UNIFORM NON-REINFORCED CONCRETE PAVEMENT FOR TEMPORARY ROADWAY.

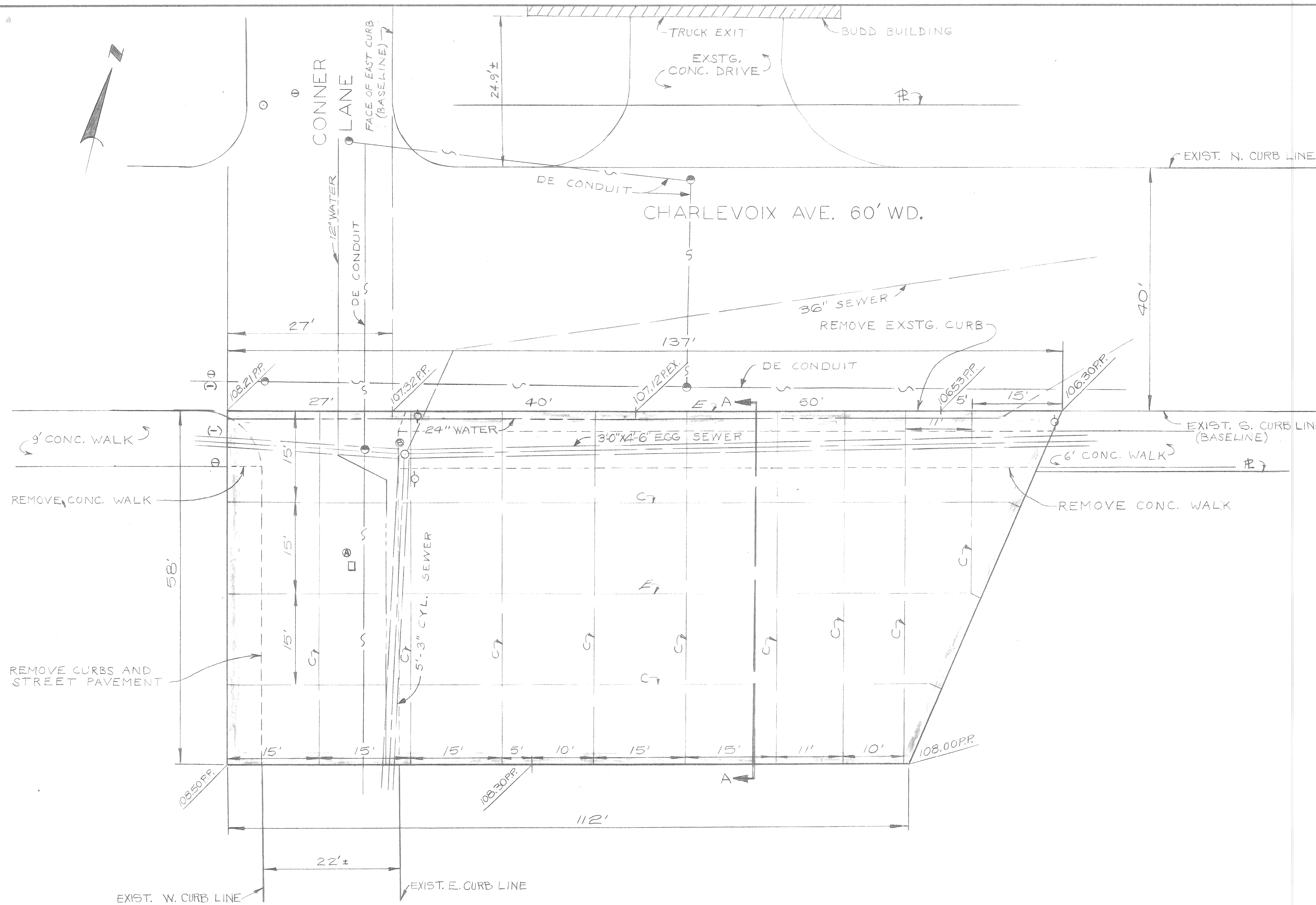
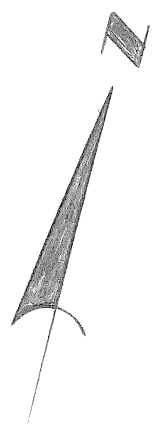


REMOVE EXISTING CURB TO PROVIDE OPENING FOR TEMPORARY ROADWAY.

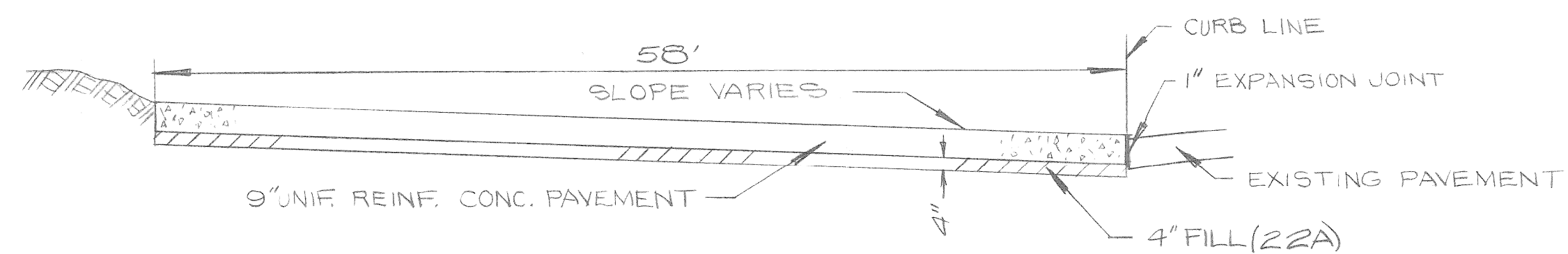
NOTES:

- THE TEMPORARY ROADWAY IS TO BE STONED AND GRADED AS SPECIFIED IN SECTION 3.III.5B OF THE CITY OF DETROIT, CITY ENGINEERING DEPARTMENT'S "STANDARD SPECIFICATIONS FOR PAVING AND RELATED CONSTRUCTION" - JUNE, 1984 EDITION, EXCEPT THAT AGGREGATES EXISTING ON THE SITE MAY ALSO BE USED AS SPECIFIED IN SECTION 3.II.2D.

REVISIONS LOCATED BY COORDINATES ON SHEET 1 2 3 4 5 6 7 8 9 10 11		DESIGNED BY W. B.	APPROVED ENGINEER OF STREETS	CITY OF DETROIT CITY ENGINEERING DEPARTMENT BUREAUS OF STREETS AND HIGHWAYS	CONNER LANE RECONSTRUCTION CHARLEVOIX TO CONNER AVE. TEMPORARY ROADWAY (BUDD COMPANY TRUCK TURNAROUND)	SHEET 18 OF 19 SHEETS
COORD DESCRIPTION DRN CKD APVD DATE		DRAWN BY J. J.	HIGHWAY ENGINEER			CONTRACT NO.
REVISIONS LOCATED BY COORDINATES ON SHEET		TRACED BY	CHECKED BY W. B.			ASSIGNMENT NO. DATE MAY, 1988



PLAN
SCALE 1" = 10'



SECTION A-A
NO SCALE

LEGEND

- 9" UNIF. REINF. CONCRETE PAVEMENT
- EXPANSION JOINT
- CONTRACTION JOINT
- EXISTING PAVEMENT ELEV.
- PROPOSED PAVEMENT ELEV.
- UTILITY POLE (TO BE RELOCATED BY OTHERS)
- ADJUST EXISTING MANHOLE
- DETROIT EDISON MANHOLE
- ADJUST EXISTING CATCH BASIN

NOTES

1. WITHIN THE LIMITS OF TURN AROUND REMOVE ALL CURB, STREET PAVEMENT AND SIDEWALK AS DIRECTED BY THE ENGINEER.
2. IF ANY BASEMENTS ARE ENCOUNTERED IN THE CONSTRUCTION AREA, THEY SHALL BE EXCAVATED AND FILLED ACCORDING TO CITY OF DETROIT STANDARDS OR AS DIRECTED BY THE ENGINEER.
3. ALL CONSTRUCTION SHALL BE DONE IN ACCORDANCE WITH THE CITY OF DETROIT STANDARD SPECIFICATIONS DATED 1984 AS AMENDED.
4. BEFORE STARTING CONSTRUCTION CONTRACTOR MUST CHECK WITH UTILITIES FOR LOCATIONS OF EXISTING STRUCTURES WHETHER OR NOT INDICATED ON PLANS.
5. FOR UTILITY LEGEND SEE STANDARD DRAWING C-902A.

DESIGNED BY G. C. U. S. C. H.	APPROVED William P. Tracy ENGINEER OF STREETS
DRAWN BY	
TRACED BY	
CHECKED BY N. W.	

CITY OF DETROIT
CITY ENGINEERING DIVISION - D. P. W.
BUREAUS OF STREETS AND HIGHWAYS
FOR

BUDD COMPANY
CHARLEVOIX TRUCK EXIT TURN AROUND

PAVING PLAN

050-151

SHEET 1 OF 1 SHEETS
CONTRACT NO.
ASSIGNMENT NO. 87-14-20
DATE 3-30-8