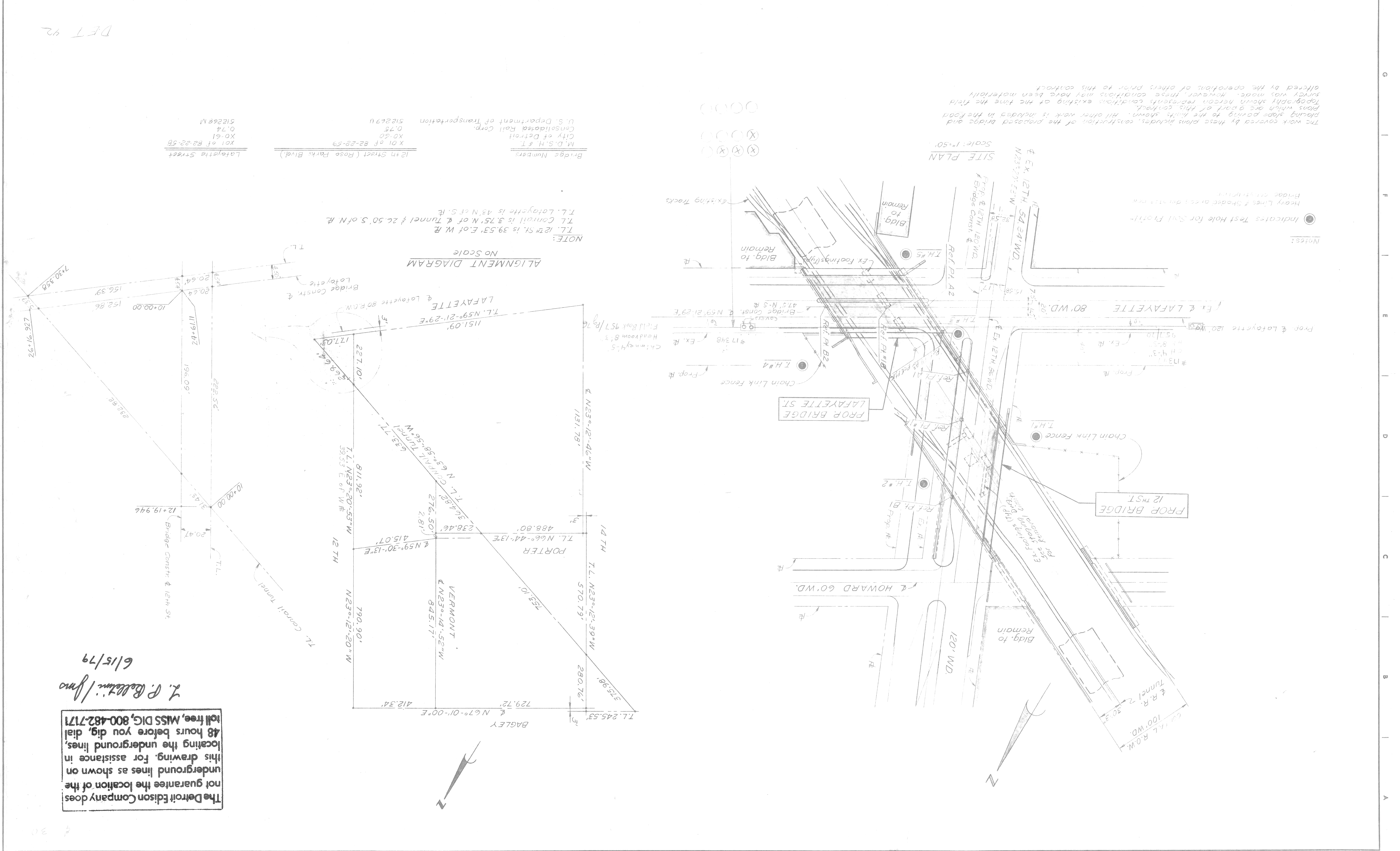


REVISIONS LOCATED BY COORDINATES ON SHEET COORD. DESCRIPTION DATE		CHECKED BY J.M.	TRACED BY	DRAWN BY	DESIGNED BY M. G. ...	APPROVED T. E. ...	CITY ENGINEER
GENERAL PLAN OF SITE 12TH ST (ROSA PARKS BLVD.) & LAFAYETTE ST CROSSING CONRAIL		CITY OF DETROIT CITY ENGINEERS DIV. E.R.#20 FOR MICHIGAN DEPARTMENT OF STATE HIGHWAY & TRANSPORTATION					
SHEET 24 OF 29 SHEETS CONTRACT NO. 07110A DRWG NO. 5101 DATE 5/79		DATE 5/79 DRWG NO. 5101 CONTRACT NO. 07110A SHEET 24 OF 29 SHEETS					

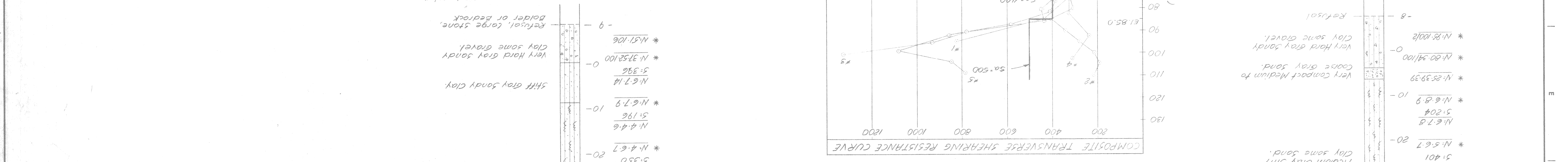


The Detroit Edison Company does not guarantee the location of the underground lines as shown on this drawing. For assistance in locating the underground lines, 48 hours before you dig, dial toll free, MISS DIG, 800-482-7171

L. P. Robinson / jms
6/15/79

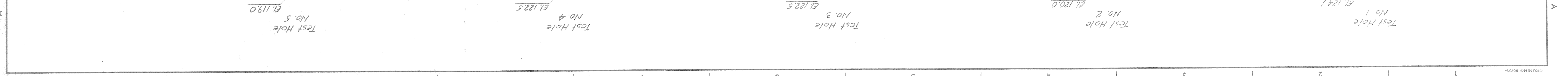
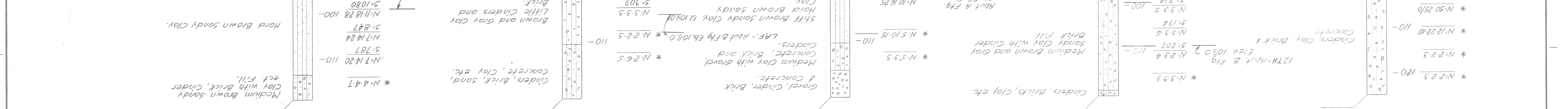
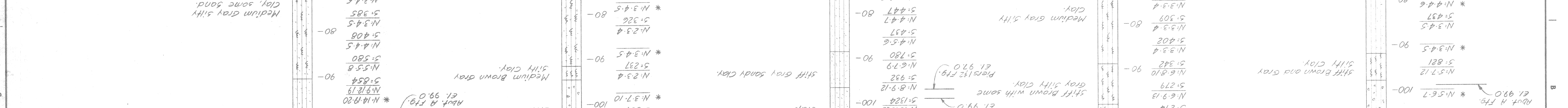
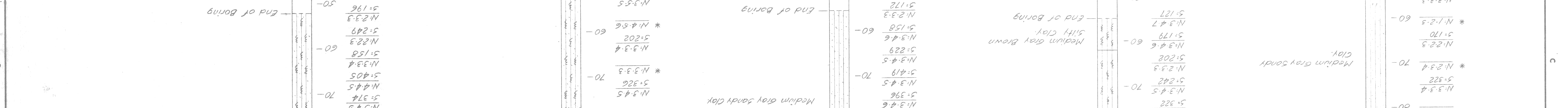
LEGEND
 Transverse Shear Resistance
 Composition of Soil
 Elevation - City of Detroit Datum
 Ground Level

Drove N.X. casing to 30'-0" below ground surface. Water level was 24.7' below ground surface @ 1/2 hr. after completion.
 Drove N.X. casing to 17'-0" below ground surface. Water level was 12'-0" below ground surface @ 1/2 hr. after completion.
 Drove N.X. casing to 12'-0" below ground surface. Water level was 19.3' below ground surface @ 1/2 hr. after completion.



NOTES:
 N: Indicates the number of blows required to drive the 2" φ o.d. sampler & (or as noted) using a 140 lb. hammer falling 30".
 S: Indicates Transverse Shearing Resistance in lbs. per sq. ft. as determined by M.D.S.H. Standard Test.
 * Indicates no sample.
 All elevations are based on City of Detroit Datum.
 Bottom of pile elevation estimated elev. +2.0.
 Min. pile penetration to elev. 50.0
 Borings were taken March 5, 1973

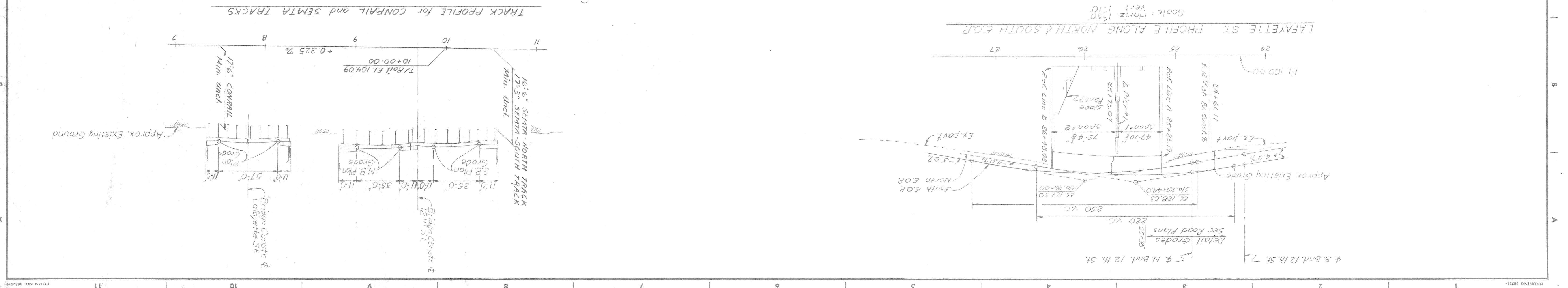
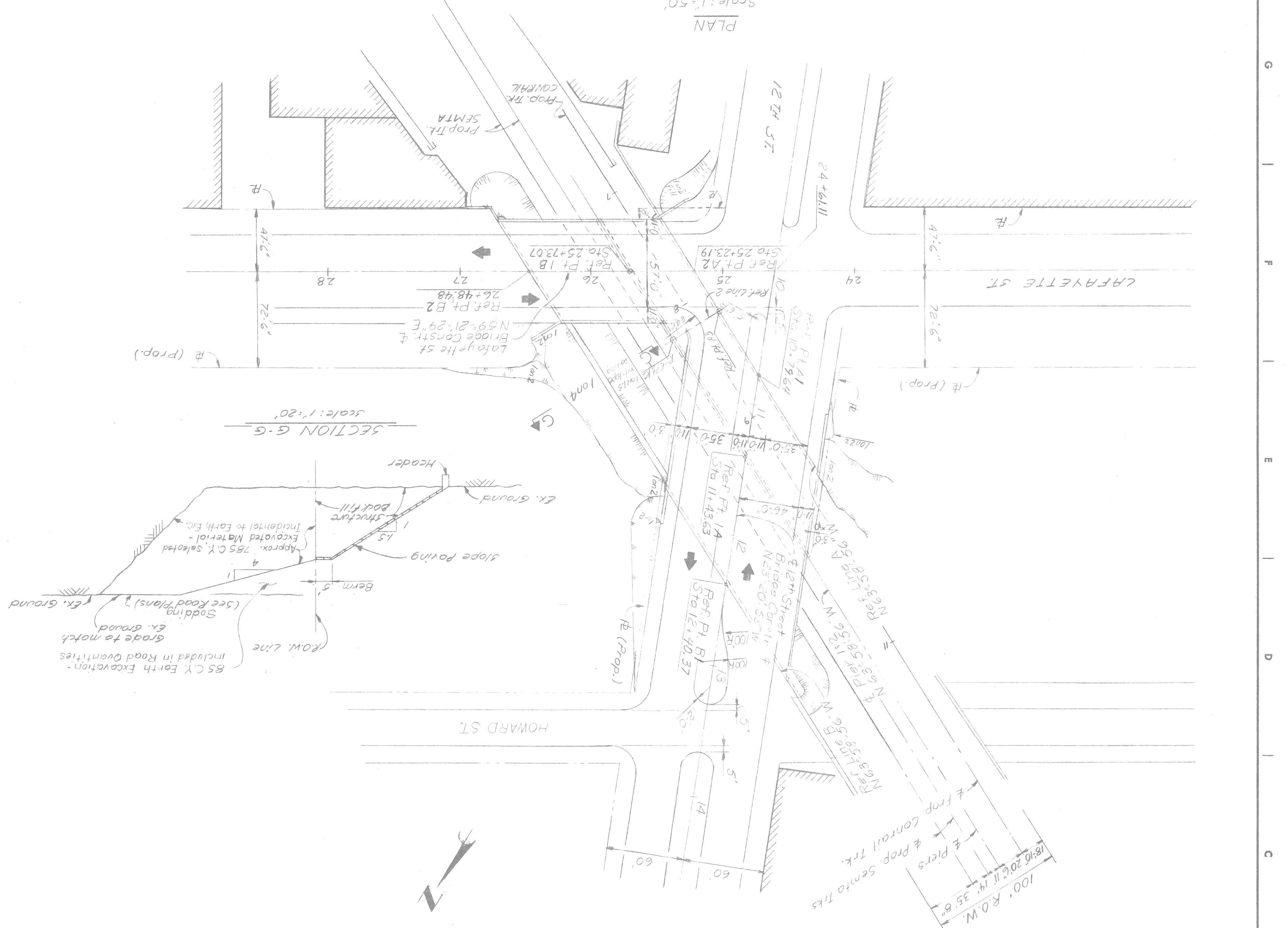
Drove N.X. casing to 80'-0" below ground surface. Water level was 12'-0" below ground surface @ 1/2 hr. after completion.
 Drove N.X. casing to 17'-0" below ground surface. Water level was 12'-0" below ground surface @ 1/2 hr. after completion.
 Drove N.X. casing to 12'-0" below ground surface. Water level was 19.3' below ground surface @ 1/2 hr. after completion.



REVISIONS LOCATED BY COORDINATES ON SHEET	DESIGNED BY McGuire	APPROVED: T.E.M. - 8 STRUCT. ENGR.	CITY ENGINEER
DESCRIPTION	DRAWN BY L.G.	TRACED BY	CHECKED BY J.M.
DATE	DATE	DATE	DATE
NO. OF SHEETS	NO. OF SHEETS	NO. OF SHEETS	NO. OF SHEETS
CONTRACT NO. 07110A	CONTRACT NO. 07110A	CONTRACT NO. 07110A	CONTRACT NO. 07110A
DATE 5/79	DATE 5/79	DATE 5/79	DATE 5/79

CITY OF DETROIT
CITY ENGINEERING DIVISION - E. P. M. D.
FOR
MICHIGAN DEPARTMENT OF STATE HIGHWAYS AND TRANSPORTATION

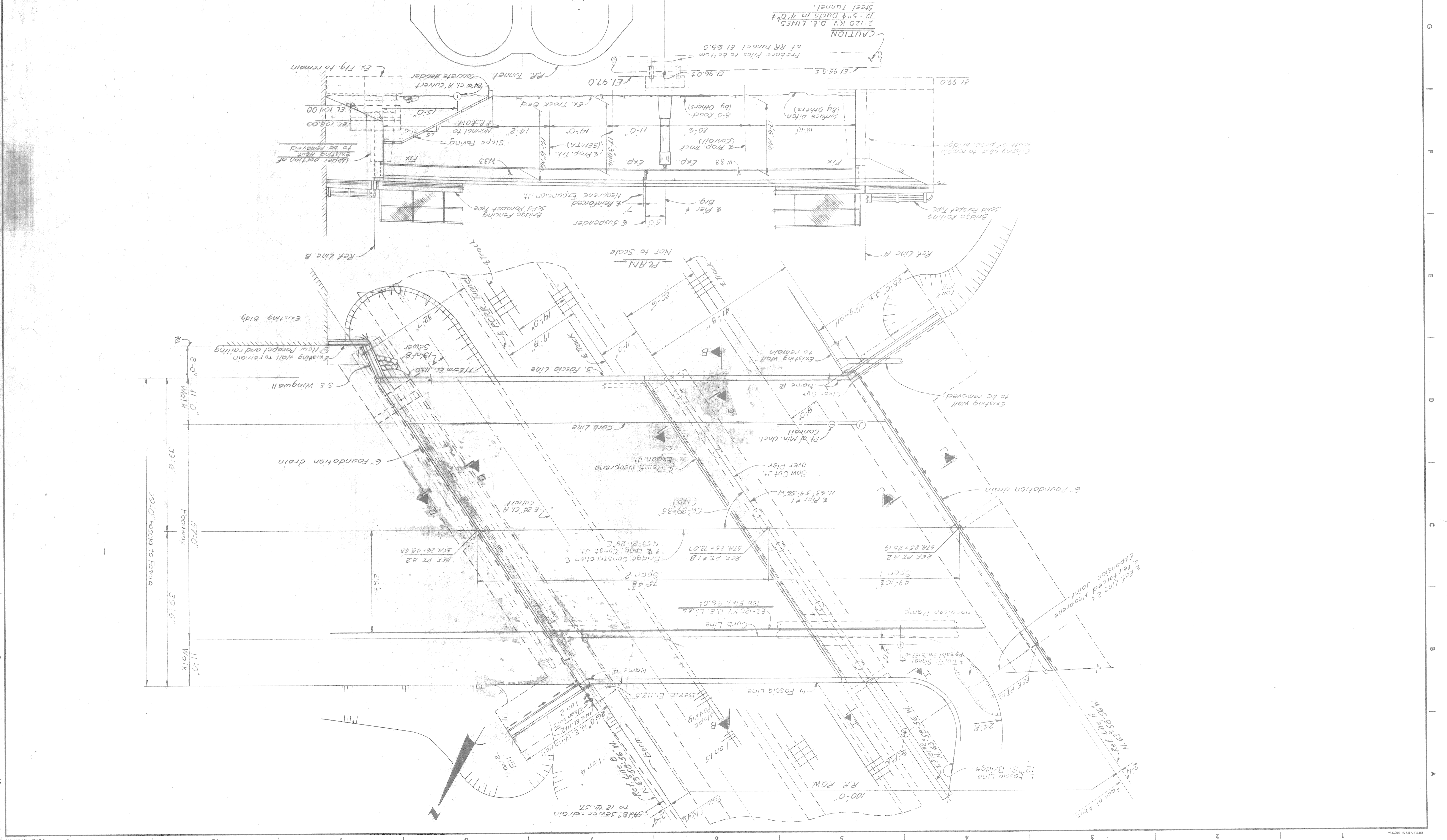
GENERAL DRAWING
12TH ST. (ROSA PARKS BLVD.) & LAFAYETTE ST. CROSSING CONRAIL



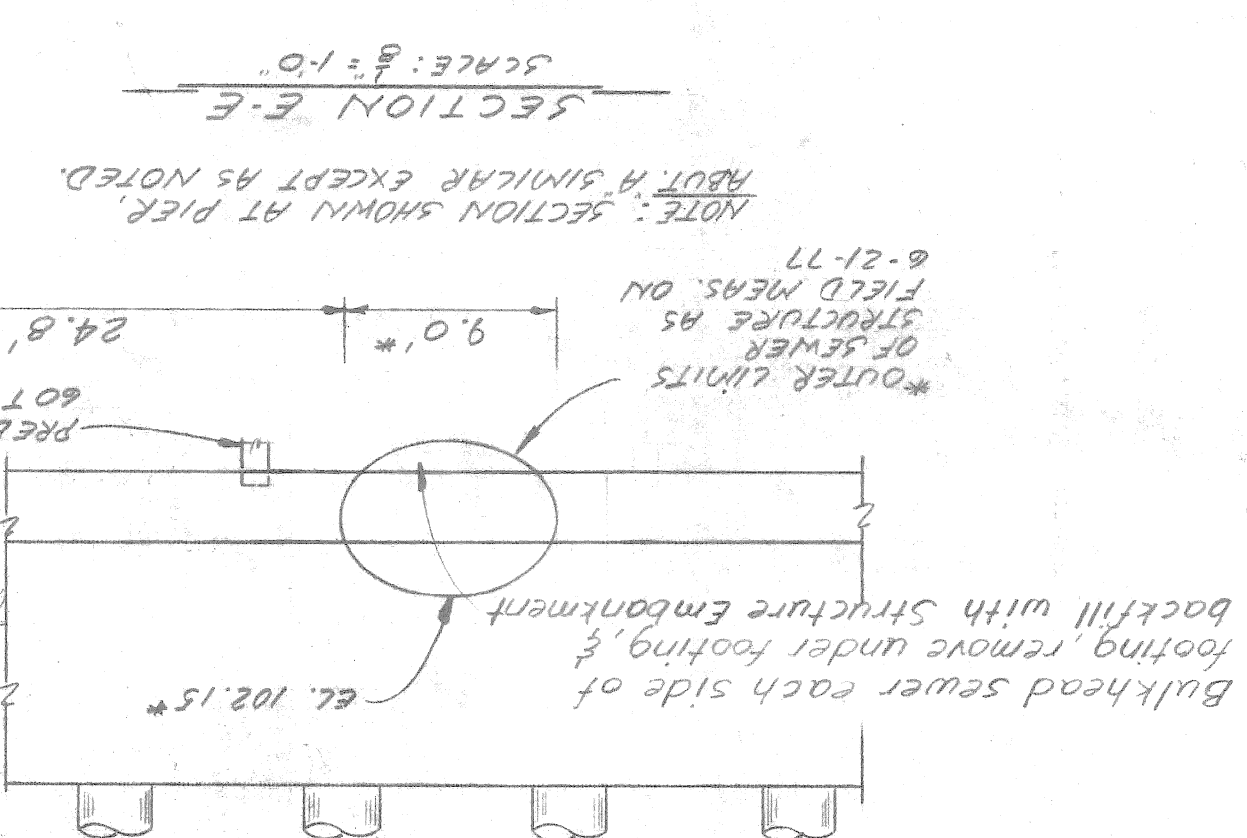
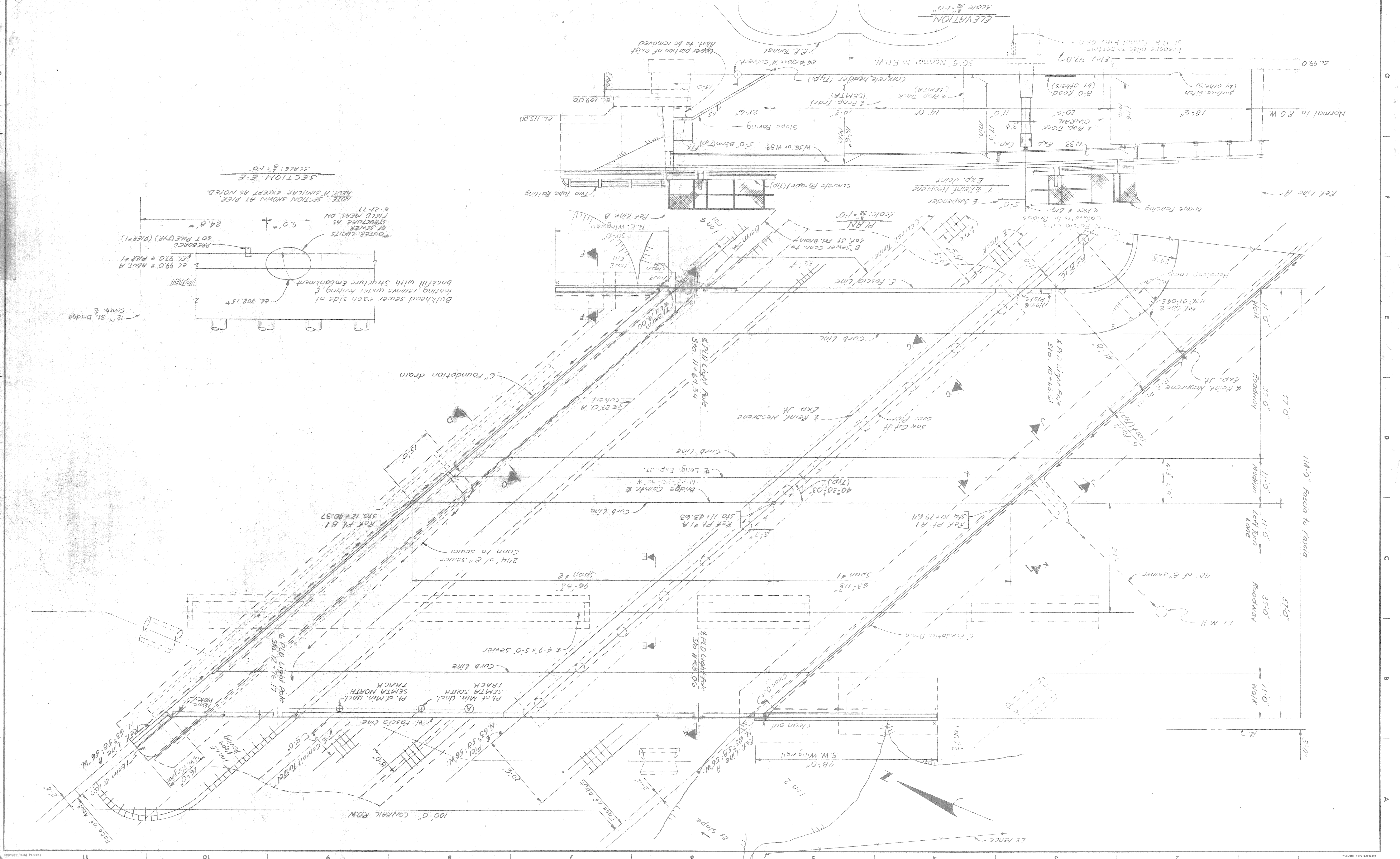
REVISIONS LOCATED BY COORDINATES ON SHEET	APPROVED: T.E. M. - <i>[Signature]</i>	CITY ENGINEER
DESCRIPTION	DRAWN BY: A.G.	STRUC. ENGR.
DATE	CHECKED BY: J.M.	CITY ENGINEER
NO. OF SHEETS	DESIGNED BY: Mc Guire	APPROVED:
NO. CONTRACT		
DATE		

CITY OF DETROIT
 CITY ENGINEERS DIV. E.P.M.D.
 FOR
 MICHIGAN DEPARTMENT OF STATE HIGHWAYS & TRANSPORTATION

GENERAL PLAN OF STRUCTURE - LAFAYETTE BLVD.
 12TH ST. (ROSA PARKS BLVD.) & LAFAYETTE ST. CROSSING CONRAL



REVISIONS LOCATED BY COORDINATES ON SHEET NO. DATE DESCRIPTION		CHECKED BY TRACED BY DRAWN BY DESIGNED BY		CITY ENGINEERS STRUCT. ENGR. APPROVED: T.E. 9m-28waw		MICHIGAN DEPARTMENT OF STATE HIGHWAYS & TRANSPORTATION FOR CITY ENGINEERS DIV. C.R.H.D.		GENERAL PLAN OF STRUCTURE - 12TH ST. 12TH ST. (ROSA PARKS BLVD.) & LAFAYETTE ST. CROSSING CONRAIL		DATE: 5/79 DRWG NO. 5105 CONTRACT NO. 07110A SHEET 28 OF 29 SHEETS	
--	--	--	--	--	--	---	--	--	--	---	--



ELEVATION
SCALE: 3/8" = 1'-0"

GENERAL NOTES:

The design of this structure is based on current AASHTO Standard Specifications for Highway Bridges (MS 25-44 loading) and the M.D.S.H. Specifications for Highway Bridges - 1958 Edition.

Slope paving shall be either "Precast Concrete", "Concrete", or "Grouted Flagstone" as specified in the M.D.S.H. 4-T, Std. Specifications 6.01. For Details see Standard Drawing SP2.

Tamped Clay and Selected Excavated Material are incidental to Unclassified Foundation Excavation.

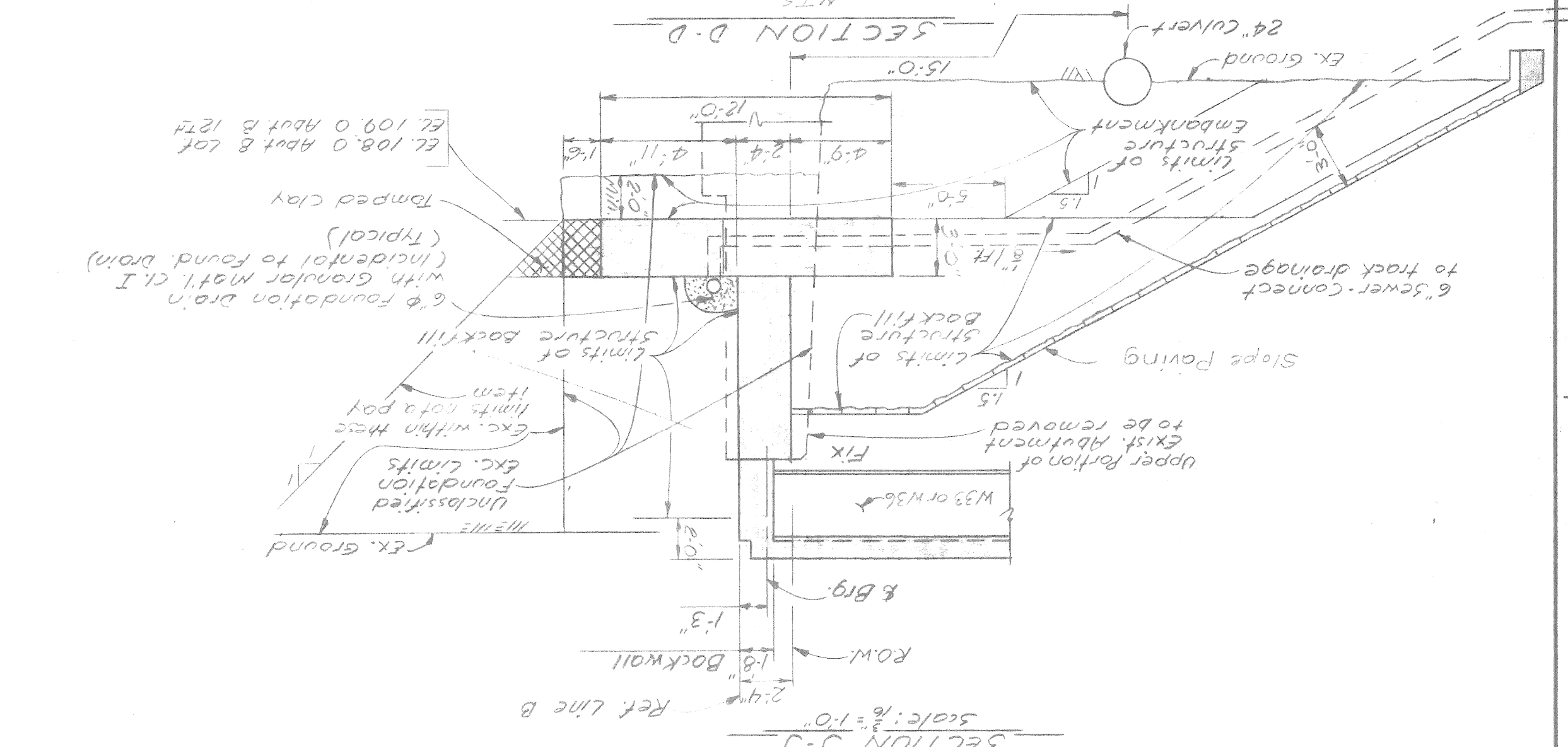
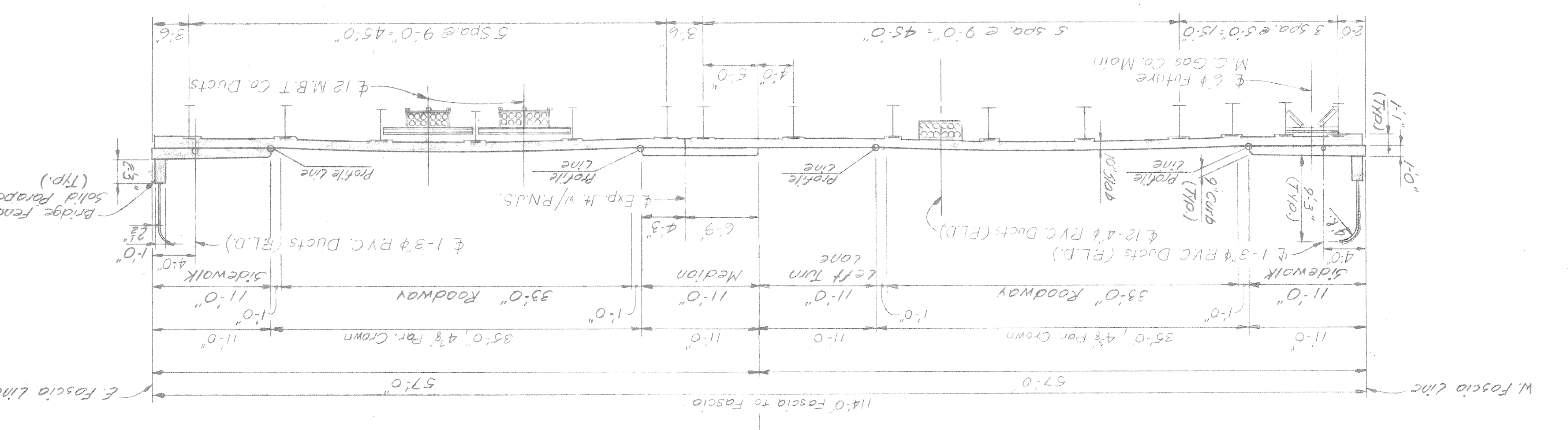
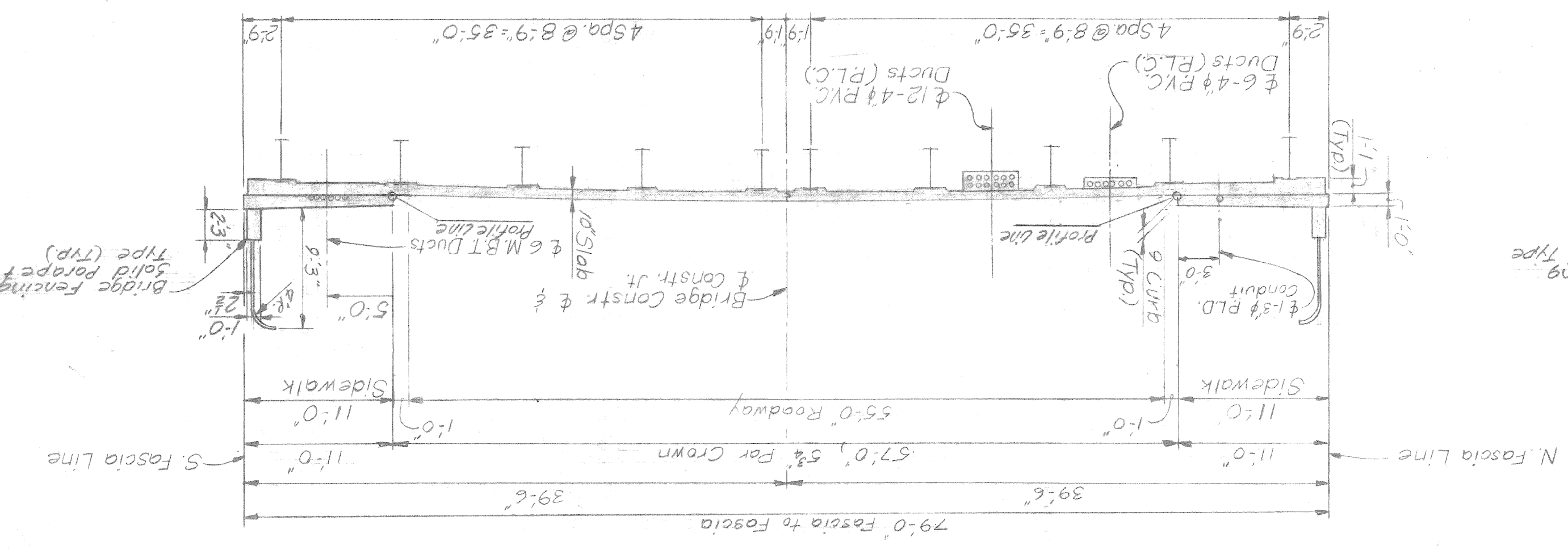
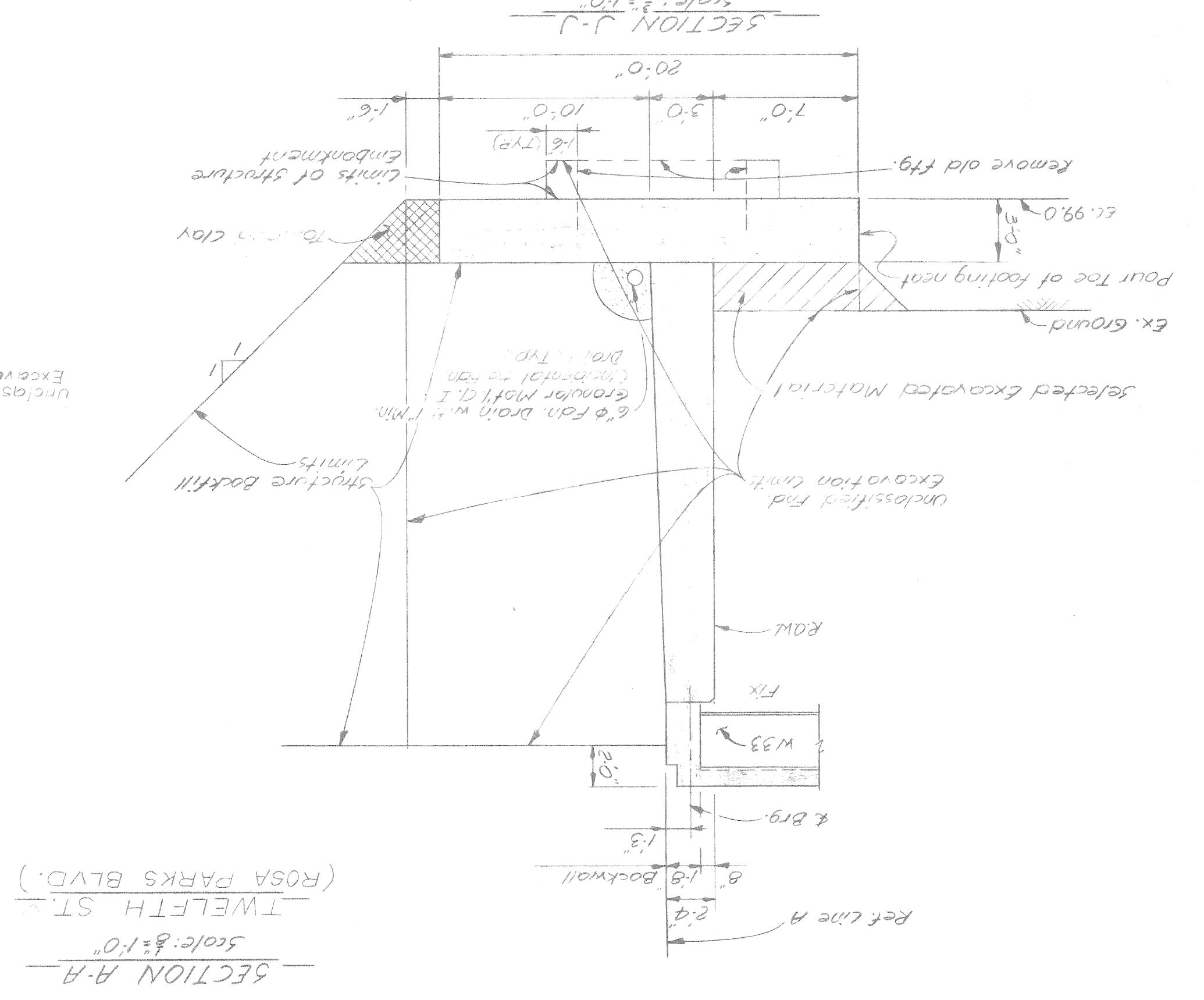
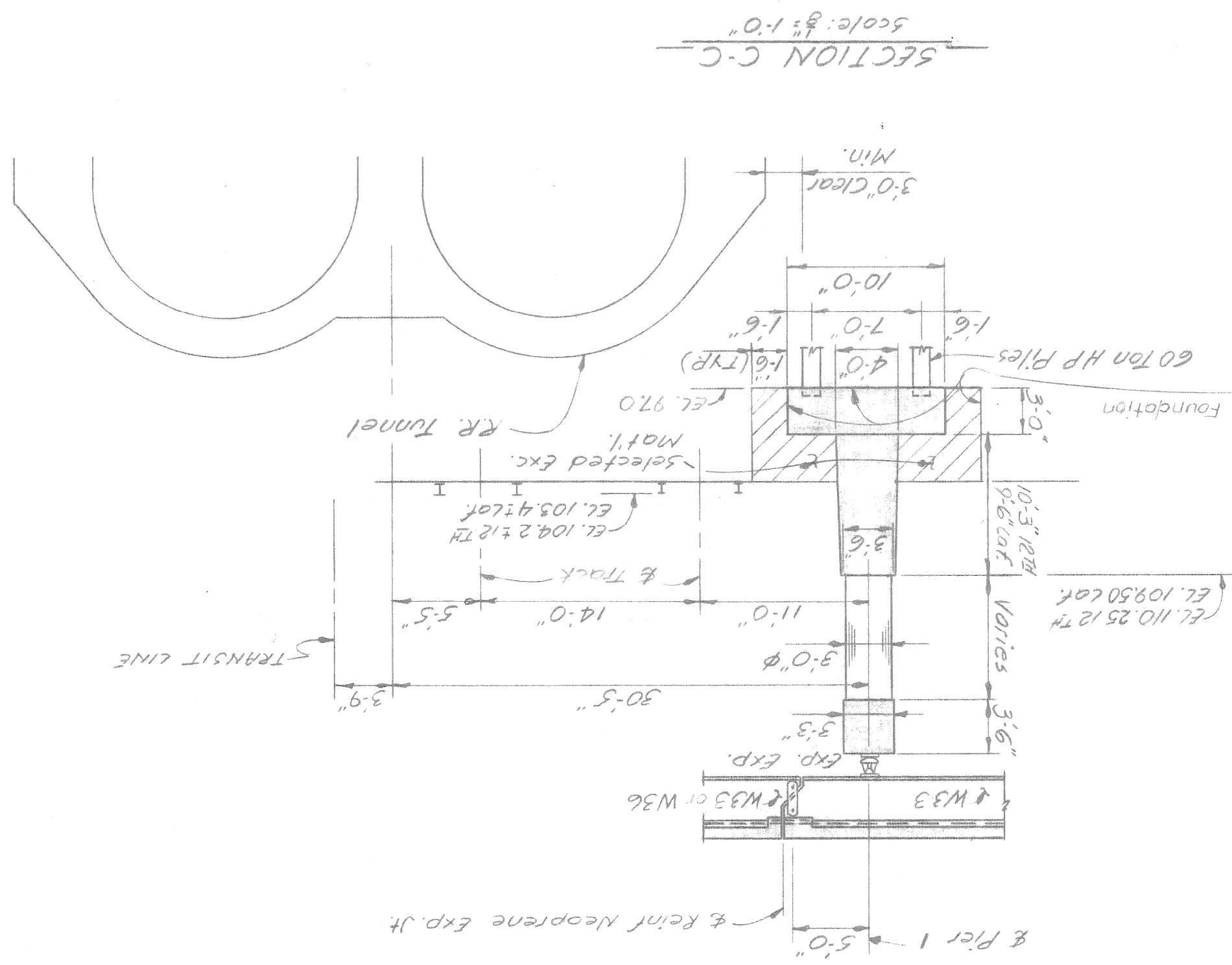
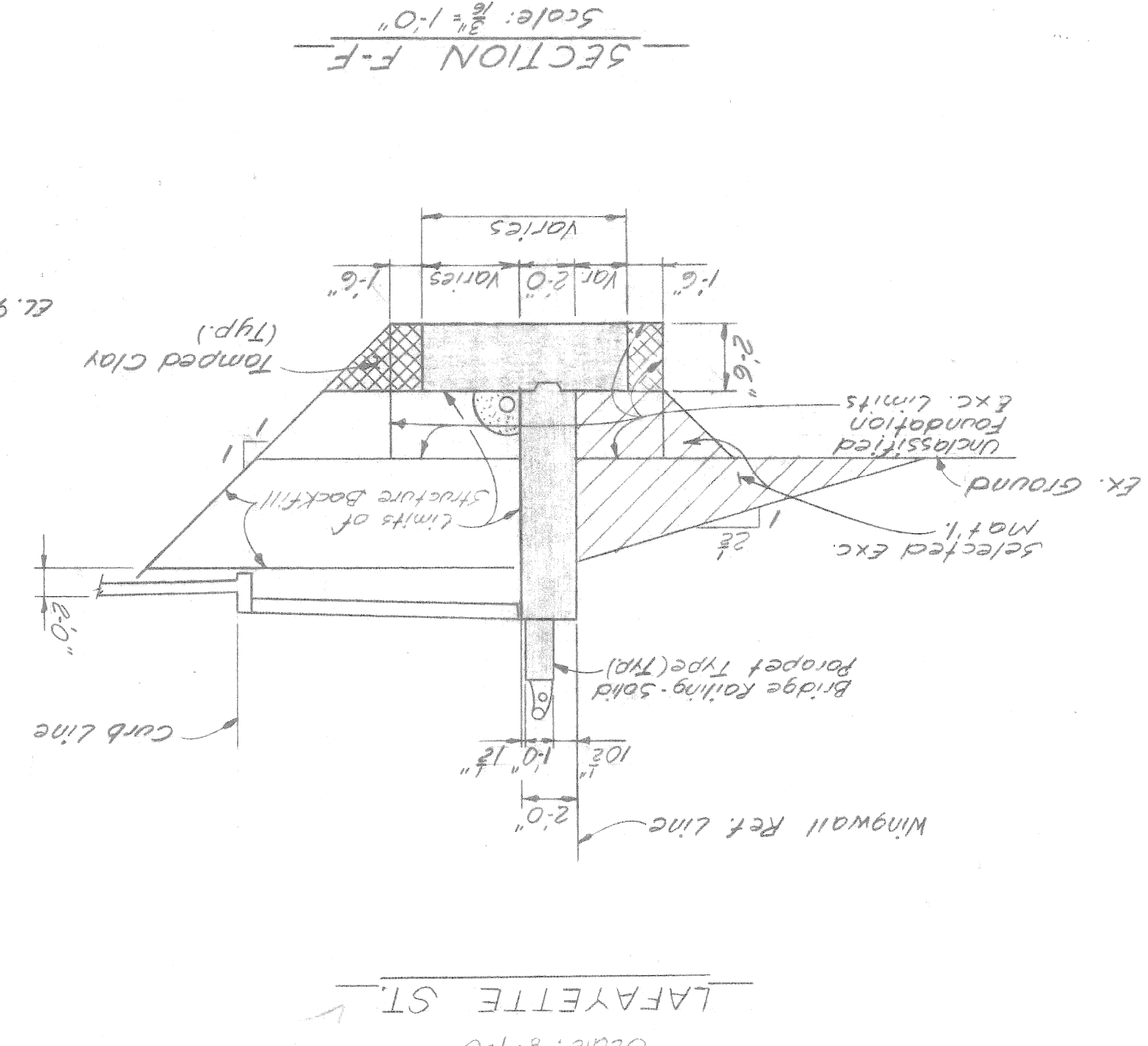
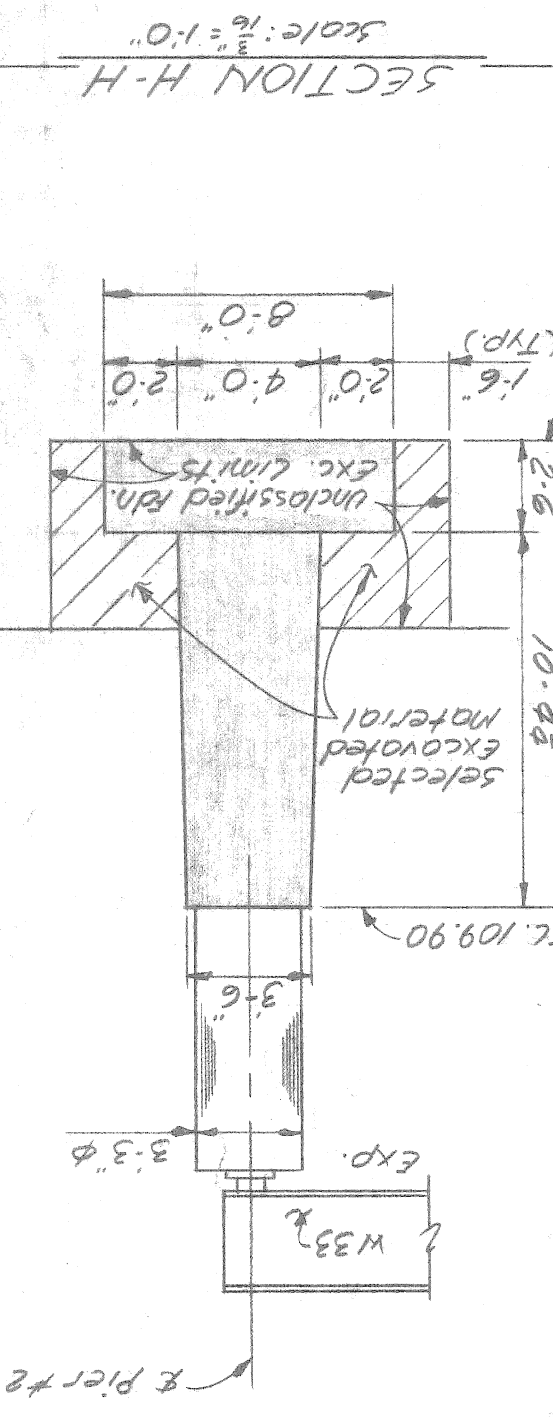
Structure Embankment limits shall extend to 5' outside the toe at all abutment and wingwall footings and slope down on a 1 on 2 slope to existing ground. All other fill under slope paving shall be Structure Backfill.

Trackwork, 8' access road, and surface drainage ditch by Consolidated Rail Corp. Except where other wise indicated on these plans or in the Proposal and Supplemental Specifications contained herein, all materials and workmanship shall be in accordance with the Michigan Dept. of State Highways and Transportation Standard Specifications for Highway Construction, 1976 Edition.

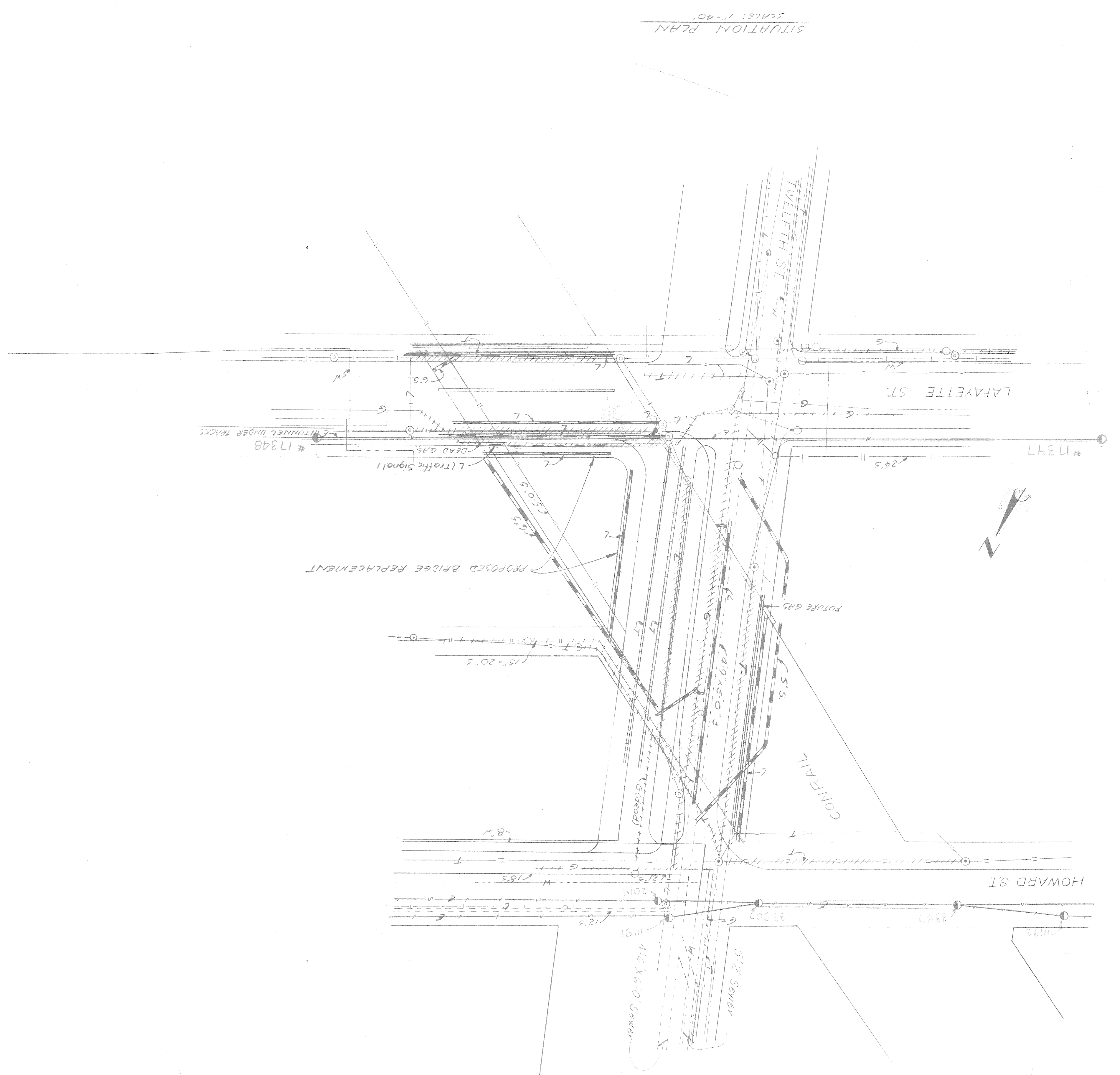
MISCELLANEOUS QUANTITIES

ITEM	UNIT	12TH STREET	LAFAYETTE ST.	TOTAL
Removal of Portions of Structures	Lump Sum			
Structure Embankment (C.L.B.)	C.Y.	710	415	1,125
Structure Backfill (C.I.P.)	C.Y.	4,970	3,030	8,000
Temporary Steel Sheet Piling	S.F.	825	1,015	1,840
8 in. Class "C" Sewer Trash Def. 9	L.F.	284	67	351
Slope Paving	S.Y.	785	445	1,230
Slope Protection Headers	L.F.	316	188	504
24" Culvert (Cross A)	C.F.	294	168	462

The line separating 12th St and Lafayette St quantities is Ref. Line 2 extended



REVISIONS LOCATED BY COORDINATES ON SHEET NO. DATE DESCRIPTION 1 2 3 4 5 6 7 8 9 10 11		CHECKED BY: J.M. TRACED BY: DRAWN BY: L.S. DESIGNED BY: McGuire APPROVED: T.E. McQuinn STRUCT. ENGR. CITY ENGINEER	CITY OF DETROIT CITY ENGINEERING DIVISION - E. P. M. D. FOR MICHIGAN DEPARTMENT OF STATE HIGHWAYS AND TRANSPORTATION	EXISTING UTILITIES AND PROPOSED ALTERATIONS 12TH ST. (ROSA PARKS BLVD.) & LAFAYETTE ST. CROSSING CONRAIL	DATE: 5/79 DRWG NO. 5107 CONTRACT NO. 07110A SHEET 30 OF 29 SHEETS
--	--	--	---	--	---

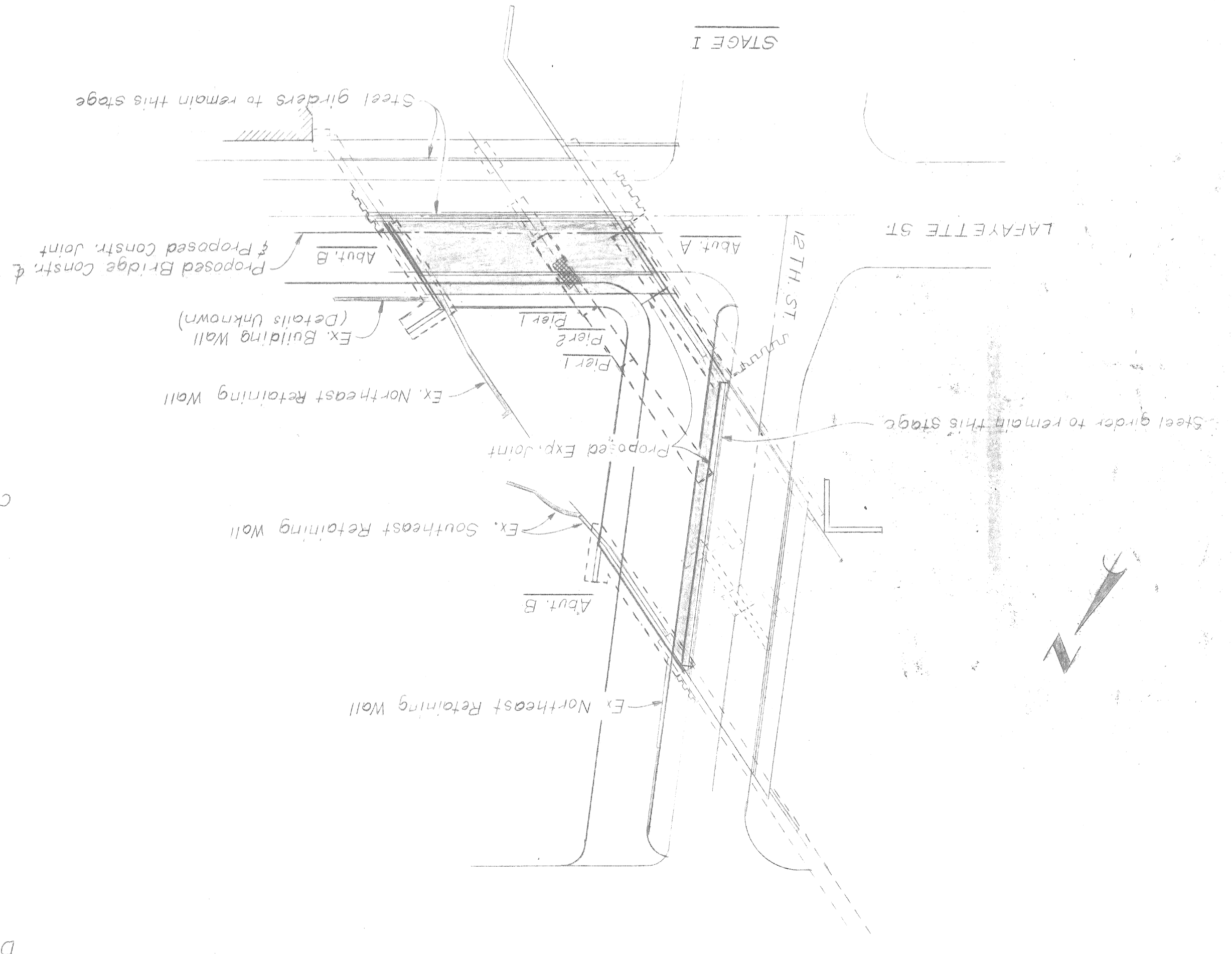
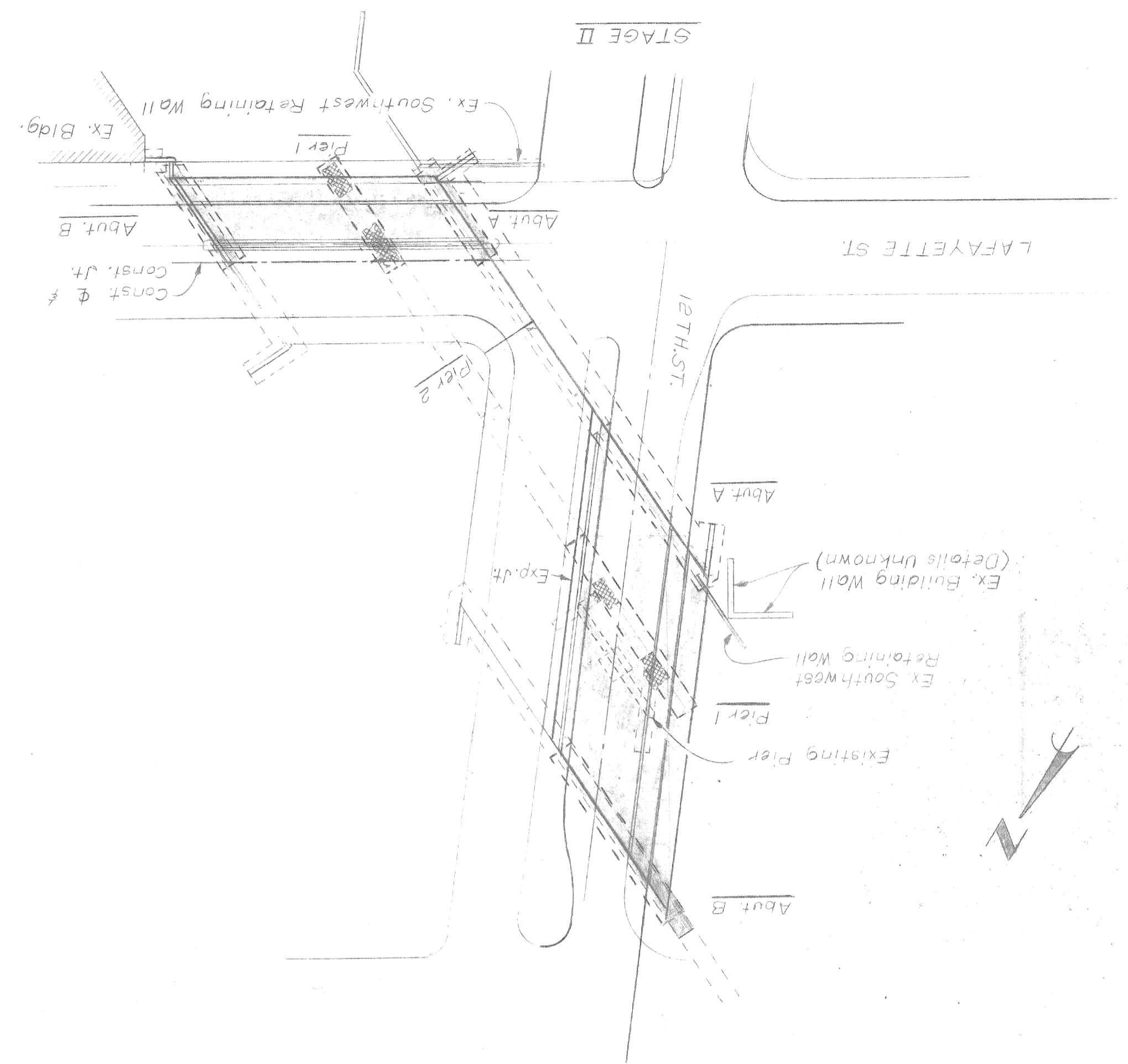


NOTES:
 The contractor shall locate all active underground utilities prior to starting work, and shall conduct his operations in such a manner as to insure that those utilities not requiring relocation will not be disturbed.
 For protection of underground utilities, the contractor shall dial 800-482-7171 a minimum of 48 hours prior to excavating in the vicinity of utility lines. All "Miss Dig" participating members will thus be routinely notified. This does not relieve the contractor of the responsibility of notifying utility owners who may not be a part of the Miss Dig client system.

LEGEND

Existing	Utility
TO BE REMOVED	Detroit Edison Co
OR ABANDONED	Public Lighting Commission
PROPOSED BY CONTRACTOR	Sewer
OTHERS	Water
	Michigan Bell Telephone Co.
	Michigan Consolidated Gas Co.

CITY OF DETROIT		MICHIGAN DEPARTMENT OF STATE HIGHWAYS AND TRANSPORTATION	
CITY ENGINEERING DIVISION - E. P. M. D.		FOR	
12TH ST. (ROSA PARKS BLVD.) & LAFAYETTE ST. CROSSING CONRAIL		STAGING DRAWING	
DESIGNED BY <i>Mc Guire</i>	ENGINEER OF STREETS	DATE <i>5/79</i>	ASSIGNMENT NO. 77-22-13
TRACED BY	HIGHWAY ENGINEER	SHEET NO. 31	CONTRACT NO. 07110A
CHECKED BY	APPROVED	OF SHEETS 29	SHEETS
DRAWN BY <i>L. G.</i>			
DESCRIPTION			
REVISIONS LOCATED BY COORDINATES ON SHEET			



DEMOLITION - STAGE I

P.L.D. to temporarily relocate conduits from the east walk of 12th St and the north portion of Lafayette St bridge.
Remove the east walk from existing 12th St bridge.
Remove the north half of Lafayette St bridge.
Remove the existing stone and concrete abutments and walls, shown shaded on 12th and Lafayette St to 2ft min. below the proposed footing elevations.
Remove the Northeast retaining wall on Lafayette to 3ft. below Plan Grade.
Remove the Southeast retaining wall on 12th St. to 3ft. below Plan Grade.
Remove the Northeast retaining wall and building wall on Lafayette to 2ft. below proposed footing elevation or 3ft. below plan finished grade.
Remove the North half of the center pier on Lafayette St. including the northern most footing shown crosshatched. That portion of the pier necessary for support of the center girder shall remain intact.

CONSTRUCTION - STAGE I

Construct the east portion of Abutment B and wing wall on 12th St. and the north portion of Abutment A on Lafayette St.
Construct the east portion of Pier 1 on Lafayette St. and the north portion of Pier 1 on Lafayette St. Pier 1 on Lafayette St. will be built over and around the existing D.E. 120KV. line in tunnel approximately 26 ft N. of the bridge constr. Jt.
Construct Pier 2
Construct the east portion of Abutment A on 12th St and the adjoining north portion of Abutment A on Lafayette St.
Set the steel beams for both east portion 12th and north portion Lafayette St. M.B.T. Co. to relocate their ducts from existing 12th St bridge to new 12th St. bridge. Approximate time required to splice cables is 2 months. R.L.D. to relocate their ducts from existing Lafayette St. bridge (south portion) to new Lafayette St. bridge. Approximate time required to splice cables is 2 weeks.
Complete the bridge superstructure for both the east portion of 12th and the north portion of Lafayette Streets.
Drive Temporary Sheet Piling & locations. See Abutment Drawings.
Locate all active utilities prior to driving any sheeting.

DEMOLITION - STAGE II

After all utilities have been removed from the remaining portions of the existing bridge demolition can commence.
Remove the remaining superstructures from 12th and Lafayette street bridges.
Remove the remaining stone and concrete abutments and walls, shown shaded, on 12th and Lafayette streets to 2 ft. min. below the proposed footing elevations or 3ft. below plan finished grade.
Remove the pier bent and concrete base wall on 12th Street to the top of the existing steel grade beams. Remove the existing footings and that portion of the grade beams within the new footing outline, shown cross-hatched, to elevation 96.5.
Remove the pier bent and concrete base wall and footings on Lafayette Street shown crosshatched.

CONSTRUCTION - STAGE II

Construct the west portion of Abutments A and B and wing walls for Lafayette St. Abut. A (12th) will be built over & around the sewer for 12th Street and the south portions of Abutments A and B and wing walls for Lafayette St.
Construct the west portion of Pier 1 on 12th Street. This pier will be built over and around the existing sewer in 12th Street located approximately 29 ft. west of the bridge constr. Jt.
Construct the south portion of Pier 1 on Lafayette street.
Erect the remaining structural steel and complete the bridge superstructure for both 12th and Lafayette Streets.
Remove all temporary sheeting driven in Stage I.

GENERAL NOTES:

Areas shown shaded are to be removed - see specific demolition notes.
Stone abutments, walls, and piers that support girders shall not be removed within 2ft. of the girder bearings.
Unless otherwise specified building foundations, building walls, etc. shall be removed to 3ft. below existing or proposed grades. Any walls, foundations, etc. within and below the proposed footing areas shall be removed to a minimum of 2ft. below the bottom of footing elevation and backfilled with Structural Backfill.
Demolition limits for the stone abutments, piers, walls, etc. are shown on the existing bridge reference plans, sheets 68 thru 79.
The Contractor shall coordinate his work with the track work to be done by the Railway company.
The existing sewer in 12th St. must be relocated prior to starting demolition work for 12th St. Stage II.
Existing bridges will be closed to traffic until construction has been completed for Stage I. During Stage II constr. Stage I (12th and Lafayette) will be open to traffic.

5108

