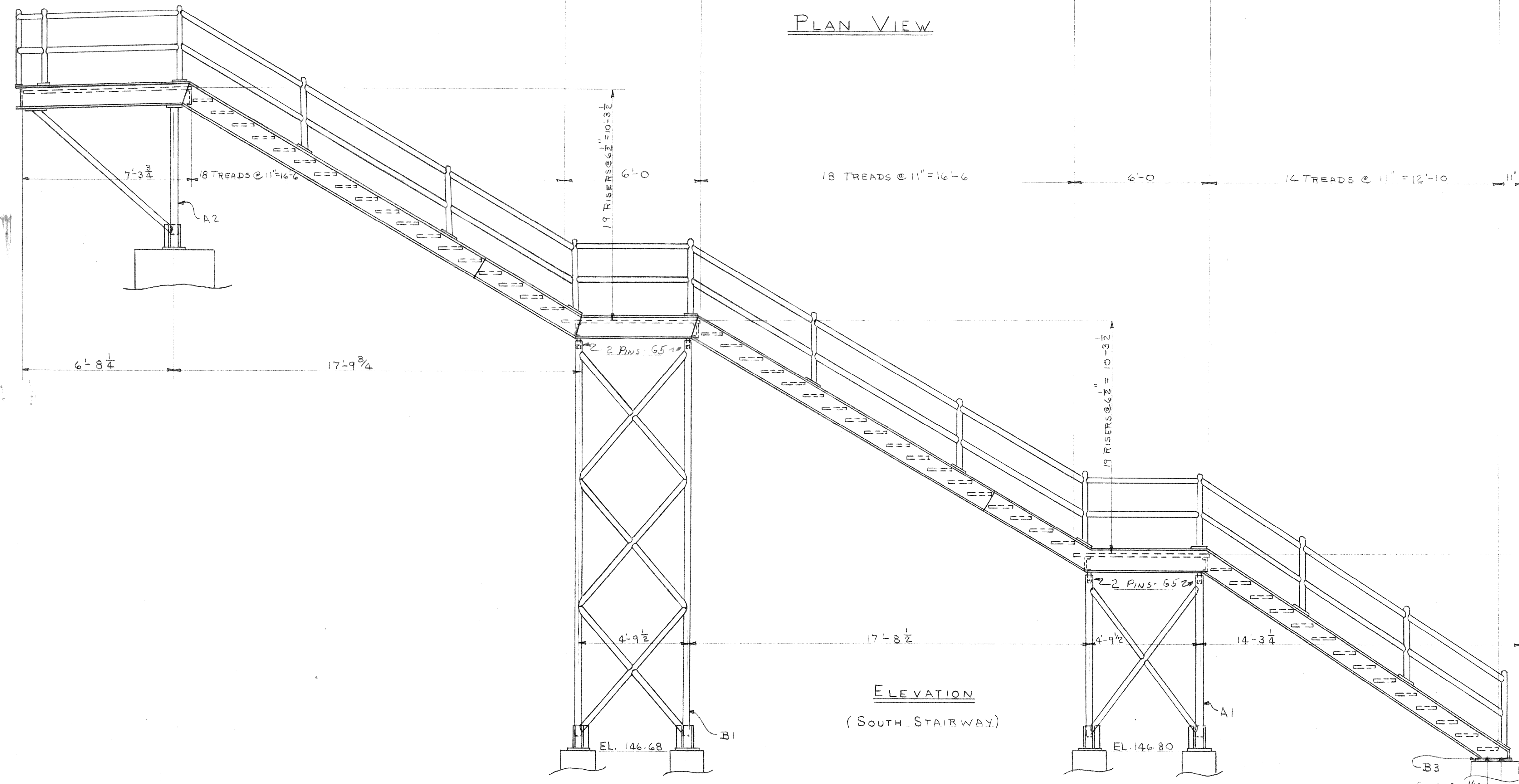


PLAN VIEW

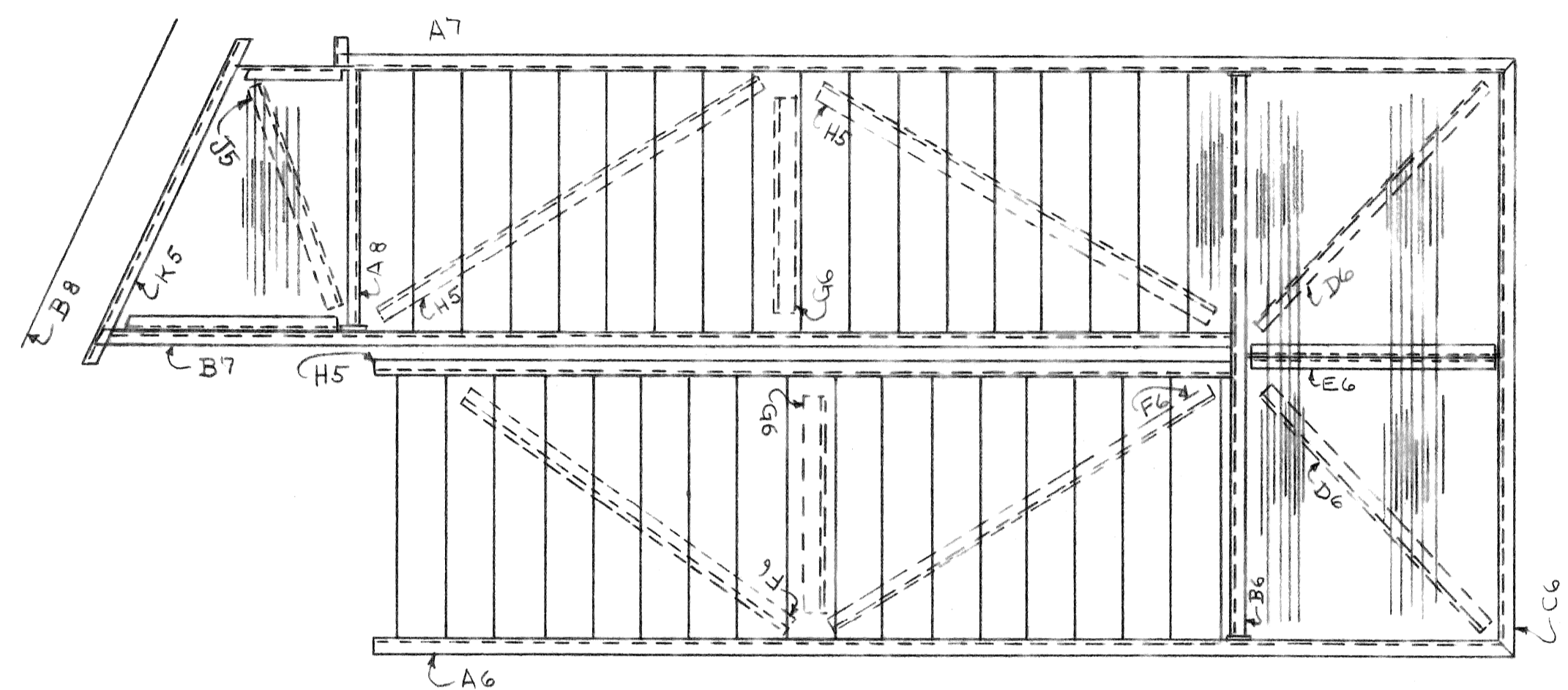


ELEVATION
(SOUTH STAIRWAY)

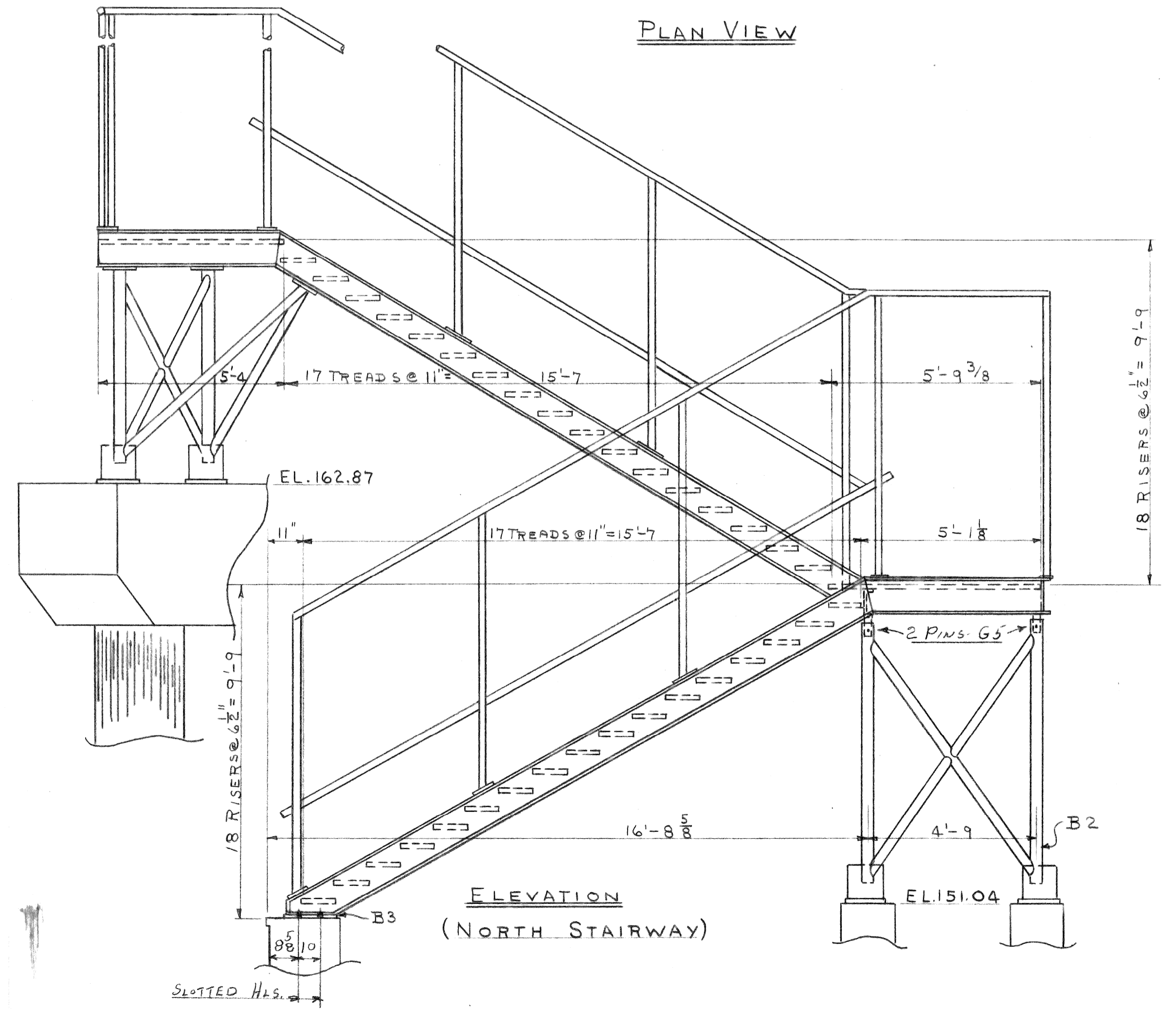
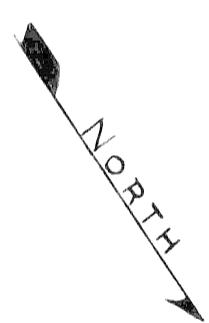
APPROVED by Board of
Wayne County Road Commissioners
Murphy J. J. J.
ENGINEER OF DESIGN, STRUCTURE & EXPRESSWAYS
Date: MAY 29 1969

VINCENNES STEEL Div. of NOVO Industrial Corp. Vincennes, Ind.			
WAYNE COUNTY ROAD COMMISSIONERS MOUNT ELLIOTT - MOUND ROAD GRADE SEPARATION JOB # 246 STATE OF MICHIGAN			
Drawn	Checked	Approved	Revised
<i>J. L. Clark</i>	<i>Clark</i>		
1-69	3-69		
Contr. No. 468 Sh. E1 of E2			

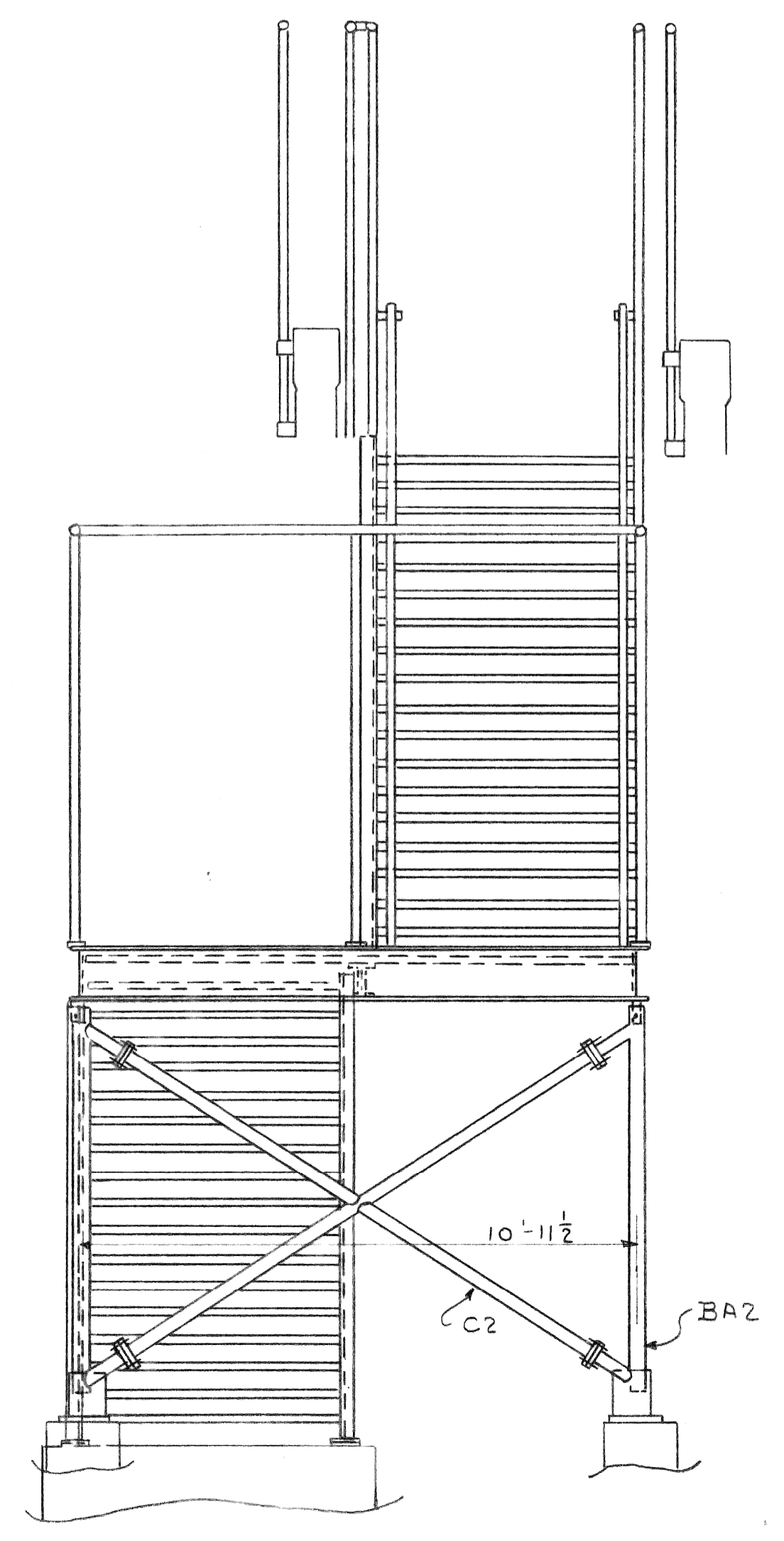
Edge Distance—	Shop—
Contact Surfaces—	Field—
Paint	
Holes—	
Rivets—Bolts	



PLAN VIEW



ELEVATION
(NORTH STAIRWAY)



VINCENNES STEEL
Div. of NOVO Industrial Corp.
Vincennes, Ind.

WAYNE COUNTY ROAD
COMMISSIONERS
MOUNT ELLIOTT-MOUND ROAD
GRADE SEPARATION
JOB #246 STATE OF MICHIGAN

Edge Distance—	Shop—	Drawn	Checked	Approved	Revised
Contact Surfaces—	Field—	8.20K	cutk		
Paint		1-69	3-69		
Holes—					
Rivets—Bolts					

Contr. No. 468 Sh. E2 of E2