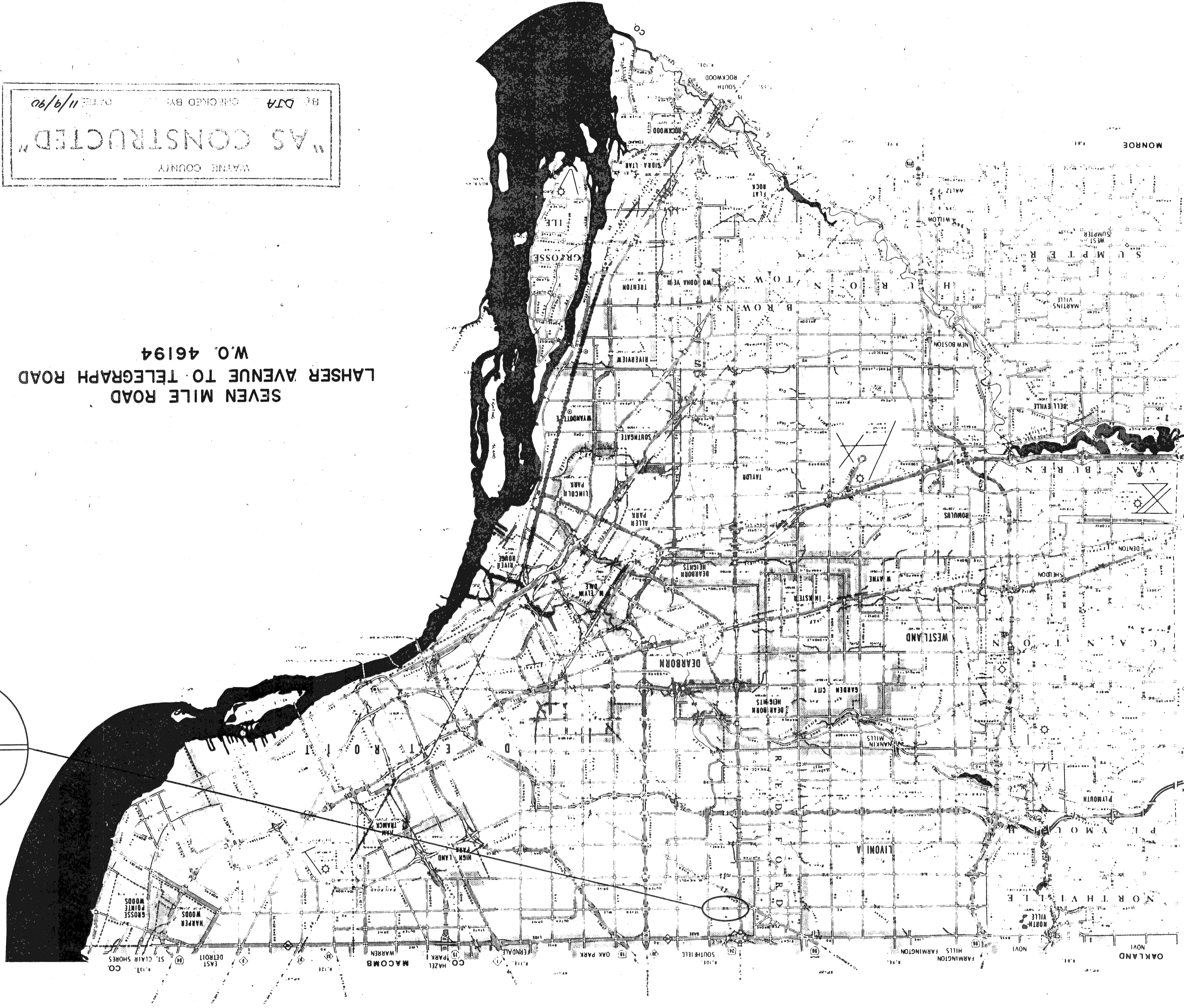


WAYNE COUNTY  
 DEPARTMENT OF PUBLIC SERVICES  
 EDWARD H. McNAMARA  
 COUNTY EXECUTIVE  
 CITY OF DETROIT  
 ROAD RESURFACING PROJECT



SEVEN MILE ROAD  
 LAHSER AVENUE TO TELEGRAPH ROAD  
 W.O. 46194

WAYNE COUNTY  
 "AS CONSTRUCTED"  
 BY DTA CHECKED BY DATE 11/9/90

1989 PROJECT  
 APPROVED DIRECTOR OF ENGINEERING COUNTY HIGHWAY ENGINEER  
 APPROVED DIVISION DESIGN ENGINEER - ENGINEERING DIVISION  
 PREPARED UNDER SUPERVISION OF  
 DIVISION CONSTRUCTION ENGINEER  
 REG. NO. 32772  
 SHEET NO. 1 FILE F-8-1

- INDEX TO SHEETS
- 1 TITLE SHEET
  - 2 TYPICAL CROSS SECTIONS
  - 3-5 PLANS
  - 6-7 LANE LINE MARKINGS

- COUNTY STANDARD PLANS
- C-17-143
  - C-17-111-X4
  - C-17-1885
  - C-17-1A85
  - C-17-IN
  - C-17-1CC3-CAD

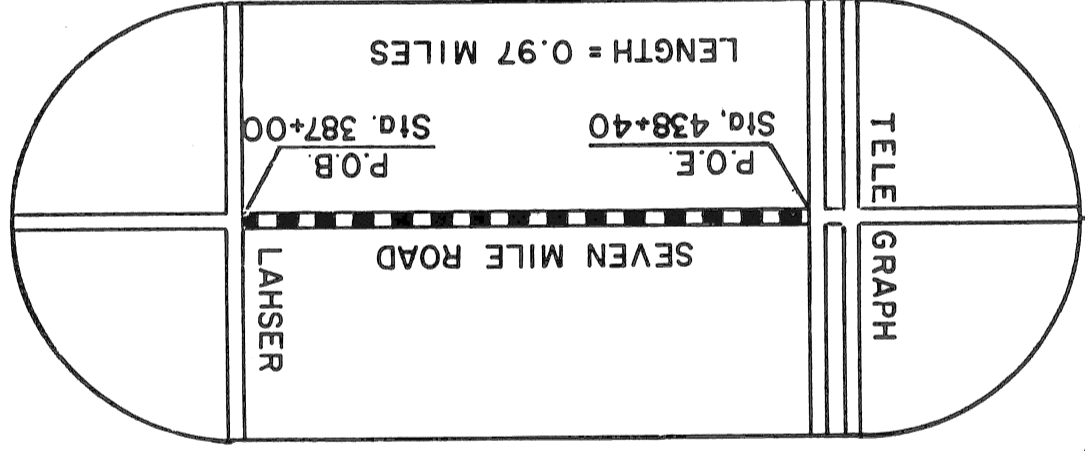
- MDOT STANDARD PLANS
- II-29E
  - III-58J
  - III-60F
  - VI-1256
  - Special Detail 7-1

DESIGN SPEED

A.D.T. (Two Way) 40 MPH  
 D.H.V. (One Way) 1000

TRAFFIC DATA

TRAFFIC DATA	DESIGN SPEED
1989	40 MPH
2009	1000
1989	21000
2009	22000
A.D.T. (Two Way)	1000
D.H.V. (One Way)	2000

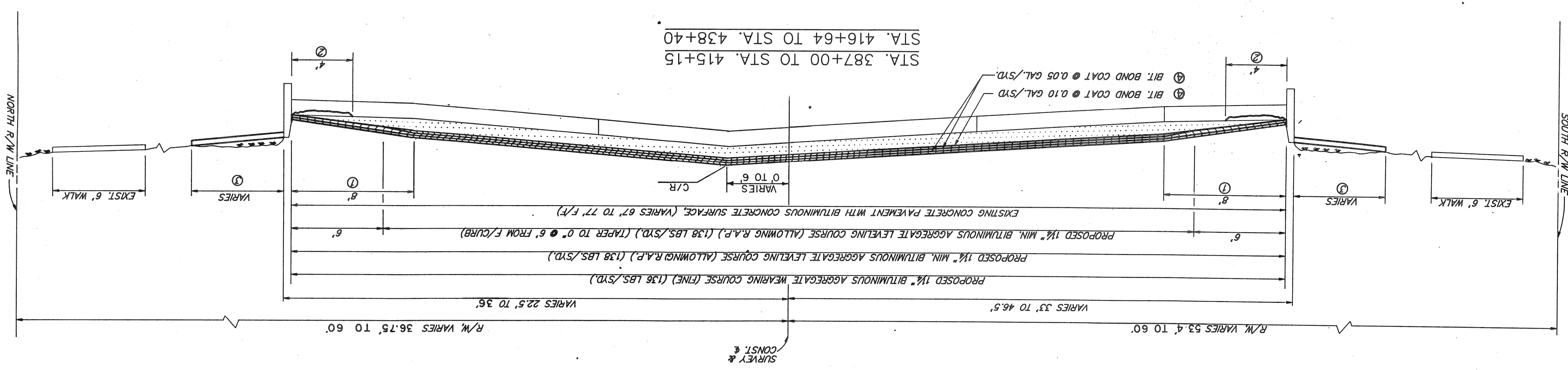


SEVEN MILE - LAHSER TO TELEGRAPH



WAYNE COUNTY  
 "AS CONSTRUCTED"  
 CHECKED BY: [Signature]  
 DATE: 11/9/90

- NOTES**
- REMOVE BITUMINOUS CONCRETE SURFACE (MILLING METHOD) (0"-3" MIN. @ GUTTER) OR AS DIRECTED BY THE ENGINEER. FOR DETAILS SEE STD. C-17-111-X4.
  - REMOVE DETRIORATED CONCRETE BY COMPRESSED AIR OR OTHER APPROVED METHOD. AND FILL VOIDS WITH BITUMINOUS MATERIAL (AS DIRECTED BY THE ENGINEER). PAID FOR AS BITUMINOUS AGGREGATE MEDGE COURSE. 117 TONS (EST.) HAVE BEEN PROVIDED FOR ENTIRE PROJECT. REMOVAL OF DETRIORATED CONCRETE IS INCLUDED IN REMOVAL OF BITUMINOUS SURFACE (MILLING METHOD).
  - NOTH VARIES 3'-5"; 2930 SYD. OF CLASS A SODDING HAVE BEEN PROVIDED FOR PLACEMENT AS DIRECTED BY THE ENGINEER. REMOVAL OF THE OVERBURDEN IS INCLUDED WITH "CLASS A" SODDING. THE QUANTITY OF OVERBURDEN IS ESTIMATED TO BE 384 CYD. TOP OF SOD TO BE FLUSH WITH TOP OF CURB, OR AS DIRECTED BY THE ENGINEER.
  - BITUMINOUS BOND COAT SS-IH WILL NOT BE PAID FOR SEPARATELY BUT SHALL BE CONSIDERED INCLUDED IN THE BITUMINOUS AGGREGATE COURSE BEING APPLIED.



SUMMARY OF ESTIMATED QUANTITIES

ITEM	UNIT	QUANTITY
REMOVING PAVEMENT	SYD.	280
REMOVING SIDEWALK	SYD.	202
REMOVING OLD PAVEMENT (PATCHING)	SYD.	330
REMOVING BIT. SURFACE (MILLING METHOD)	SYD.	8619
REMOVING BIT. SURFACE (MILLING METHOD)--FULL DEPTH	SYD.	3000
PREPARING EXISTING PAVEMENT	STA	49.4
BIT. AGG. BASE COURSE (ALLOWING R.A.P.)	TON	1420
BIT. AGG. LEVELING COURSE (ALLOWING R.A.P.)	TON	4650
BIT. AGG. WEARING COURSE (F)	TON	2743
BIT. AGG. WEARING COURSE (F)-DR.	TON	50
BIT. AGG. WEDGE COURSE	TON	117
COLD PATCH MIXTURE	TON	20
ADJUSTING MOUNTMENT BOXES	EA.	2
ADJUSTING WATER GATE RISER BOXES	EA.	7
ADJUSTING STRUCTURES	EA.	75
ADJUSTING STRUCTURES, FURNISHING COVERS A	EA.	2
ADJUSTING STRUCTURES, FURNISHING COVERS S	EA.	7
RECONSTRUCTING STRUCTURES	EA.	80
CONCRETE CURB CAP (PATCHING)	LF.	438
CONCRETE CURB CAP	LF.	94
CONCRETE SIDEWALK RAMP	SFT.	980
4" CONCRETE SIDEWALK RAMP	SFT.	666
ALVANIZED BEAM GUARD RAIL, TYPE B	LF.	50
GUARD RAIL ANCHORAGE, CABLE	EA.	4
MOBILIZATION	L.S.	1
LIGHTED ARROW, TYPE A, FURNISHED	EA.	3
LIGHTED ARROW, TYPE A, OPERATED	EA.	2
BARRICADE, TYPE II, LIGHTED, FURNISHED	EA.	150
BARRICADE, TYPE II, LIGHTED, OPERATED	EA.	100
BARRICADE, TYPE III, LIGHTED-12" WDE-FURNISHED	EA.	6
BARRICADE, TYPE III, LIGHTED-12" WDE-OPERATED	EA.	4
MINOR TRAFFIC DEVICES	L.S.	1
FLAG CONTROL	L.S.	1
SIGN, TYPE B, TEMP.	SFT.	208
TEMPORARY PAVT. MARKING, TYPE R	LF.	1236
TEMPORARY PAVT. MARKING, TYPE NR	LF.	2472
LANE LINE MARKING	P.M.	1.9
GOLDPLASTIC PAVT. MARKING, 6" CROSSWALK	LF.	1598
GOLDPLASTIC PAVT. MARKING, 24" STOP BAR	LF.	414
GOLDPLASTIC PAVT. MARKING, LEGEND (ONLY)	EA.	8
GOLDPLASTIC PAVT. MARKING, SYMBOL	EA.	6
LEFT-TURN ARROW	EA.	2
GOLDPLASTIC PAVT. MARKING, SYMBOL	EA.	61
RIGHT-TURN ARROW	EA.	61
GOLDPLASTIC PAVT. MARKING, 1" WIDE SOLID YELLOW	LF.	2930
TOPSOIL (L.M)	CYD.	86



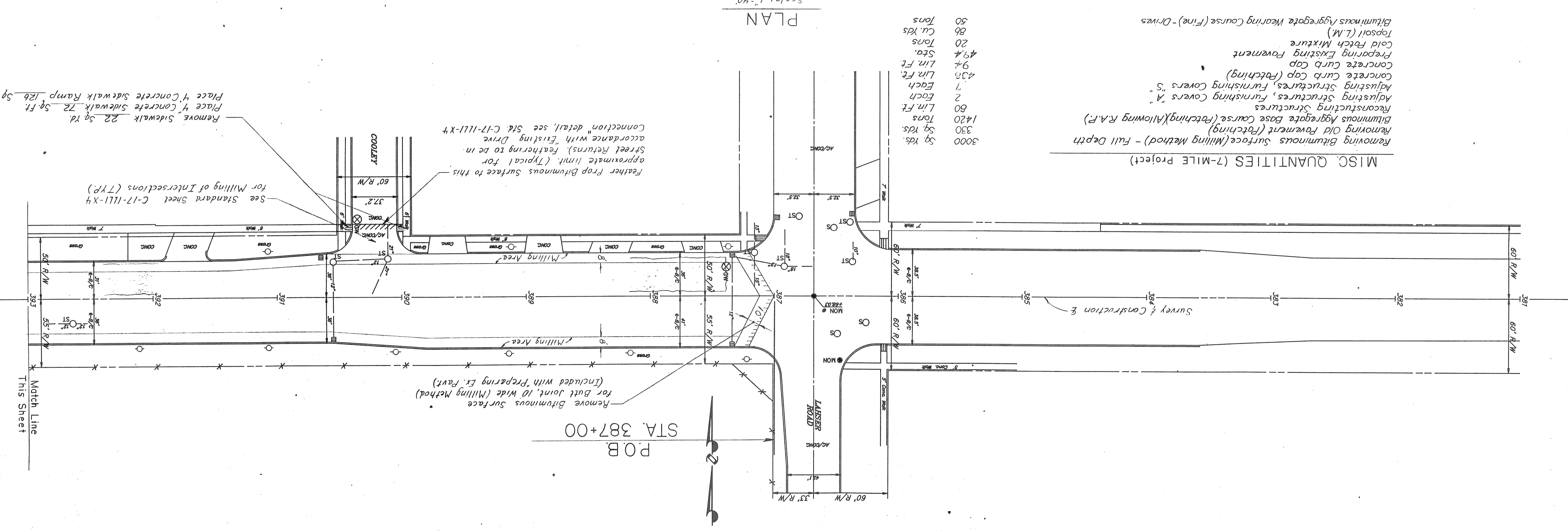
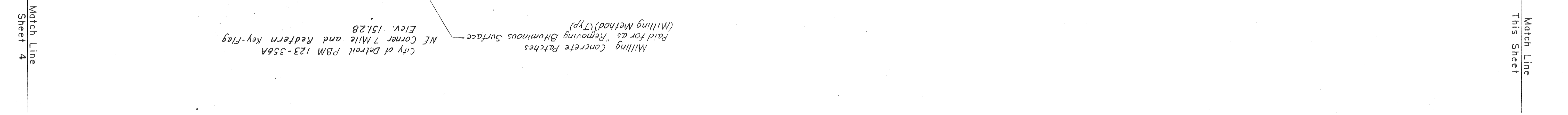
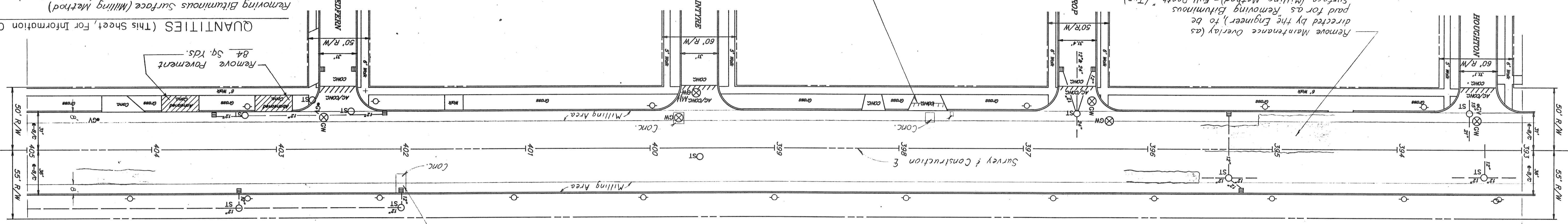
WAYNE COUNTY DEPARTMENT OF PUBLIC SERVICES  
 ENGINEERING DIVISION

SEVEN MILE ROAD  
 LAHSER TO TELEGRAPH

BY: DTA CHECKED BY: DATE: 11/9/80  
 "AS CONSTRUCTED"  
 WAYNE COUNTY

QUANTITIES (This Sheet, For Information Only)  
 Removing Bituminous Surface (Milling Method) 3192 Sq. Yds.  
 Bituminous Aggregate Leveling Course (Allowing R.A.P.) 1694 Tons  
 Bituminous Aggregate Wearing Course (Fine) 27 Each  
 Adjusting Structures 27 Each  
 Adjusting Water Gate Riser Boxes 3 Each

Proposed feathering of bituminous surface at existing drives (as directed by the Engineer) to be paid for as "Bituminous Aggregate Wearing Course (Fine)-Drives" (Typical Entire Project)  
 Remove Maintenance Overlay (as directed by the Engineer), to be paid for as "Removing Bituminous Surface (Milling Method) - Full Depth" (TYP)



PLAN  
 Scale: 1"=40'

MISC. QUANTITIES (7-MILE PROJECT)  
 Removing Old Pavement (Patching) 3000 Sq. Yds.  
 Removing Bituminous Surface (Milling Method) - Full Depth 330 Sq. Yds.  
 Bituminous Aggregate Base Course (Patching)(Allowing R.A.P.) 1420 Tons  
 Reconstructing Structures 80 Lin. Ft.  
 Adjusting Structures, Furnishing Covers "A" 2 Each  
 Adjusting Structures, Furnishing Covers "S" 7 Each  
 Concrete Curb Cap (Patching) 43.7 Lin. Ft.  
 Concrete Curb Cap 9.7 Lin. Ft.  
 Preparing Existing Pavement 49.4 Sts.  
 Cold Patch Mixture 20 Tons  
 Topsoil (L.M.) 86 Cu. Yds.  
 Bituminous Aggregate Wearing Course (Fine)-Drives 50 Tons

Remove Sidewalk 22 Sq. Yd.  
 Place 4" Concrete Sidewalk Ramp 126 Sq. Ft.

Feather Prop Bituminous Surface to this approximate limit (Typical for Street Returns), Feathering to be in accordance with "Existing Drive Connection" detail, see Std. C-17-1111-X-4  
 See Standard Sheet C-17-1111-X-4 for Milling of Intersections (TYP)

Remove Bituminous Surface for Butt Joint, 10 wide (Milling Method) (Included with Preparing Ex. Pavt.)

P.O.B. STA. 387+00

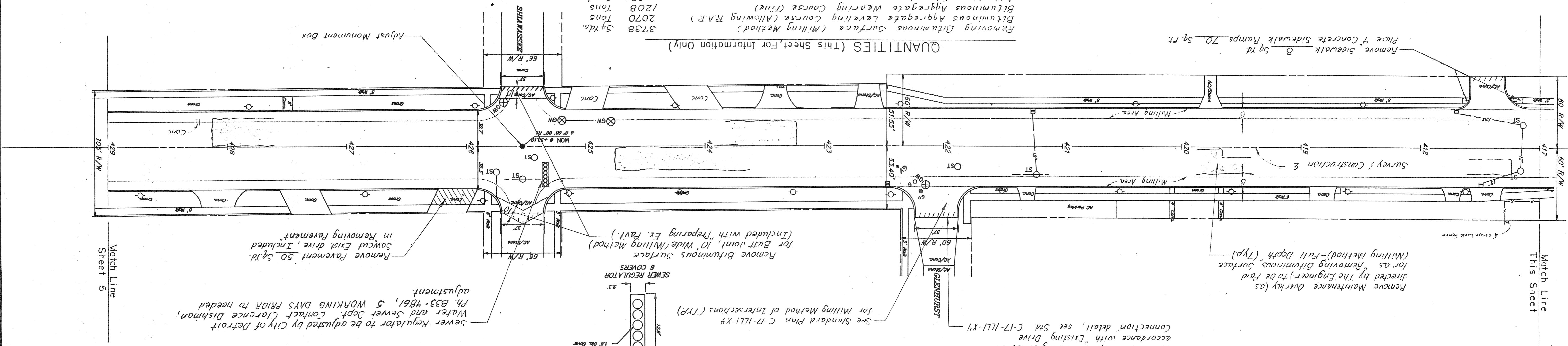
Match Line  
 Sheet 4

Match Line  
 This Sheet



WAYNE COUNTY  
 "AS CONSTRUCTED"  
 CHECKED BY: DTA  
 DATE: 11/9/90

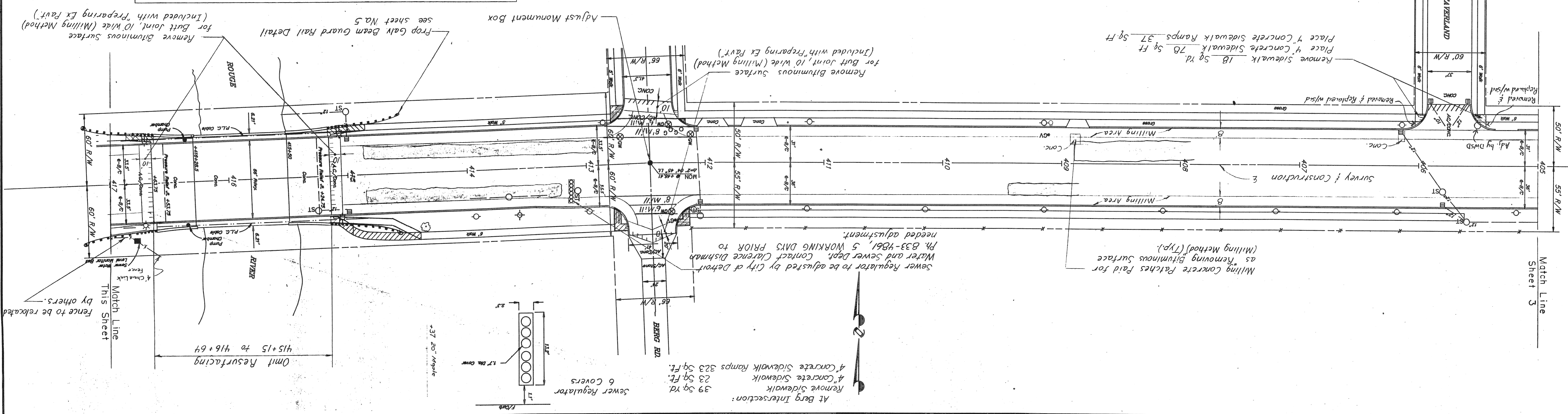
QUANTITIES (This Sheet, For Information Only)  
 3738 Sq Yds. Removing Bituminous Surface (Milling Method)  
 2070 Tons Bituminous Aggregate Leveing Course (Allowing RAP)  
 1208 Tons Bituminous Aggregate Wearing Course (Fine)  
 Adjusting Structures  
 Adjusting Water Gate Riser Boxes  
 3 Each  
 29 Each  
 3 Each



SIDEWALK QUANTITIES AT BRIDGE

ITEM	QUADRANT			
	S.E.	N.E.	N.W.	S.W.
Removing Sidewalk	53 sq Yd	24 sq Yd	15 sq Yd	—
4" Concrete Sidewalk	403 Sq Ft	183 Sq Ft	118 Sq Ft	—

PLAN  
 Scale: 1" = 40'





WAYNE COUNTY  
 "AS CONSTRUCTED"  
 CHECKED BY: D.J.A.  
 DATE: 11/9/80

**GENERAL NOTES**

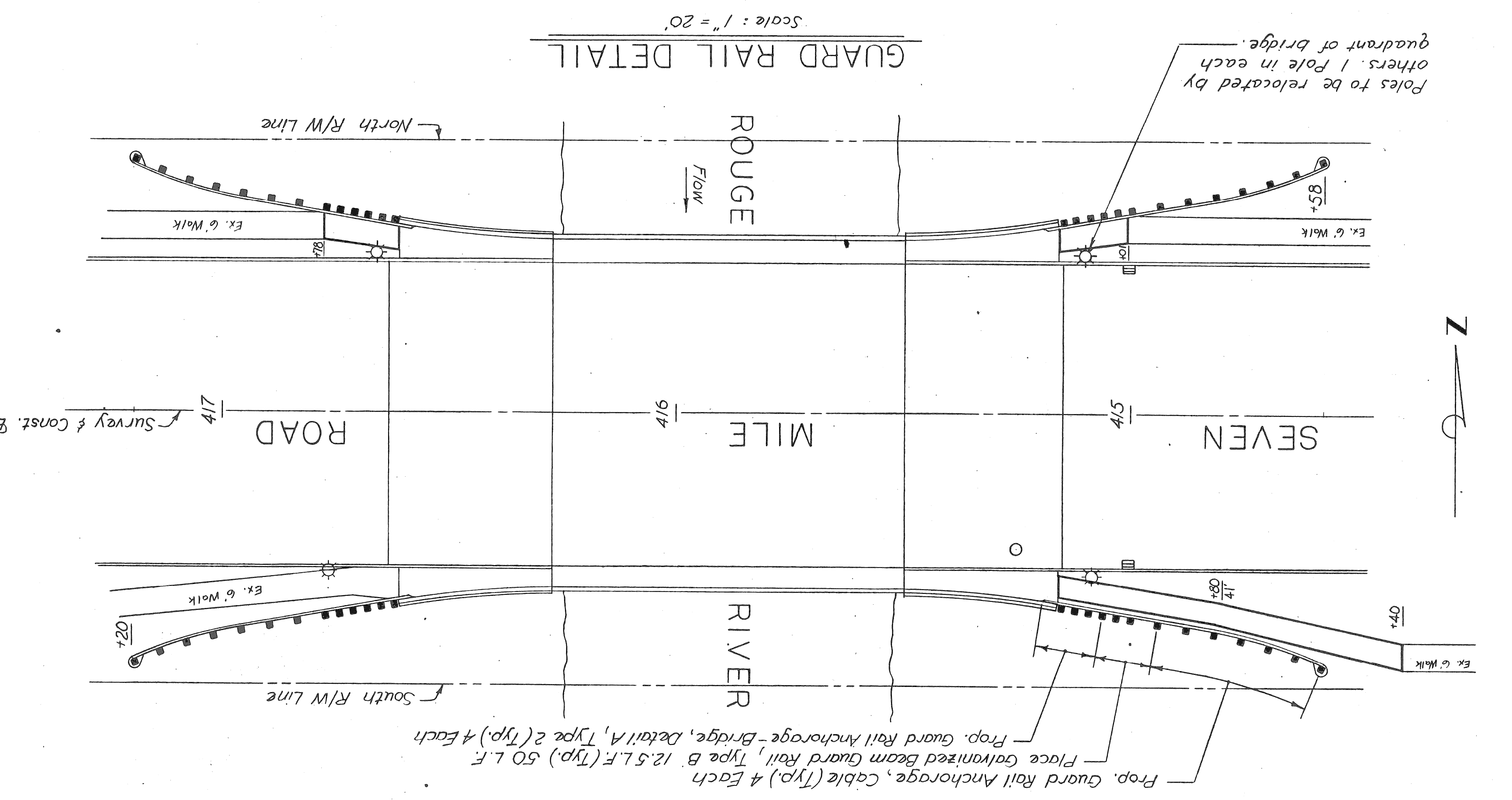
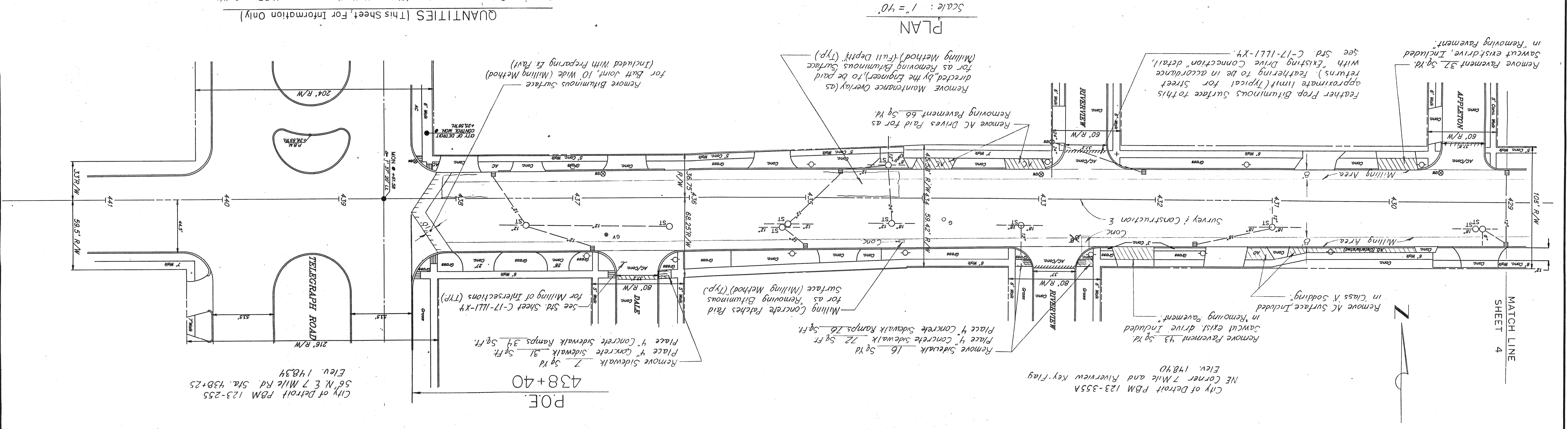
The location of all utilities shown on these plans is taken from the best available data. The Wayne County Department of Public Services (W.C.D.P.S.) will not be responsible for any omissions or variations from the locations shown. The contractor shall contact the utility owners regarding their facilities including service connections prior to starting the work. Utility service connections are not shown on plans and are not the responsibility of the W.C.D.P.S.

Existing castings damaged by the Contractor in the course of work shall be replaced by the Contractor at his own expense. Street or road name signs and stop signs in the way of construction, will be removed and reset immediately in a temporary location. Street name signs shall be finally set by the Contractor in a location designated by the Engineer, upon completion of fine grading in the section involved. This work shall be considered as included with the Project.

All fences and posts inside the right-of-way are to be removed by the owner before construction begins. Fences and posts remaining at the time of construction shall be REMOVED BY THE CONTRACTOR AND SHALL BE CONSIDERED AS INCLUDED WITH PREPARING EXISTING PAVEMENT. \*As directed by the Engineer.

**QUANTITIES (This Sheet, For Information Only)**

Removing Bituminous Surface (Milling Method)	1689	Sq. Yd.
Bituminous Aggregate Leveling Course (Allowing R.A.P.)	886	Tons
Bituminous Aggregate Wearing Course (Fine)	536	Tons
Adjusting Structures	19	Each
Adjusting Water Gate Riser Boxes	1	Each



City of Detroit PBM 123-355A  
 NE Corner 7 Mile and Riverview Key-Flag  
 Elev. 148.40

City of Detroit PBM 123-255  
 SE Corner 7 Mile Rd. Sta. 45B+25  
 Elev. 148.34







REVISIONS

DATE	BY	DATE	BY
4-3-89	SK		
CORRECT		CORRECT	
ASSISTANT DIVISION DESIGN ENGINEER		ASSISTANT DIVISION DESIGN ENGINEER	
APPROVED		APPROVED	
DIVISION DESIGN ENGINEER		DIVISION DESIGN ENGINEER	

WAYNE COUNTY DEPARTMENT OF PUBLIC SERVICES  
ENGINEERING DIVISION

LANE LINE MARKING  
SEVEN MILE ROAD  
TELEGRAPH TO LAHSER

COUNTY PROJECT  
46194  
ISSUE NO.  
7  
DATE  
1-2-89

WAYNE COUNTY  
"AS CONSTRUCTED"  
BY: DJA CHECKED BY: DATE: 11/9/90

