

SEVEN MILE RD. W. OUTER DRIVE TO LIVERNOIS

WAYNE COUNTY OFFICE OF PUBLIC SERVICES DETROIT, MICHIGAN

EDWARD H. McNAMARA
COUNTY EXECUTIVE

CITY OF DETROIT ROAD IMPROVEMENT PROJECT

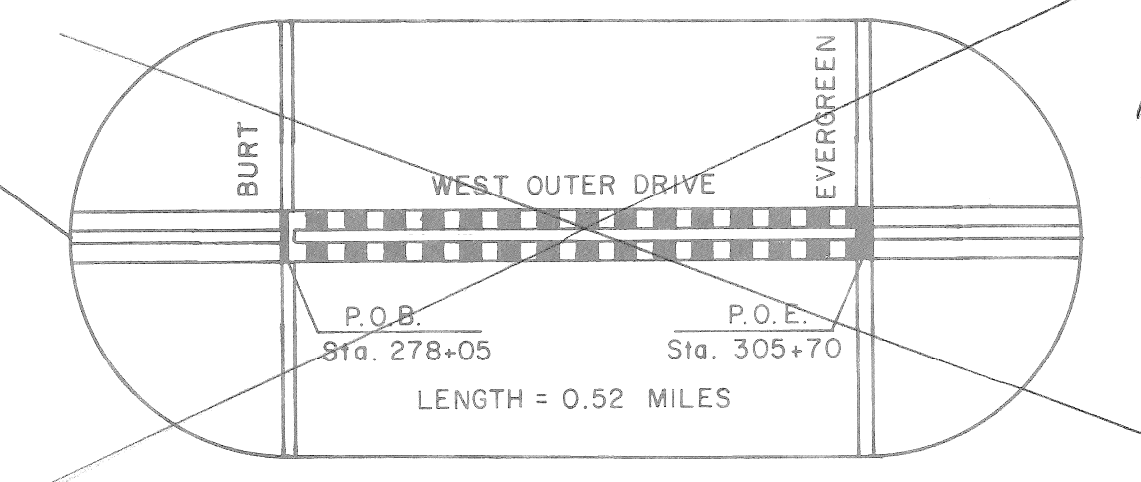
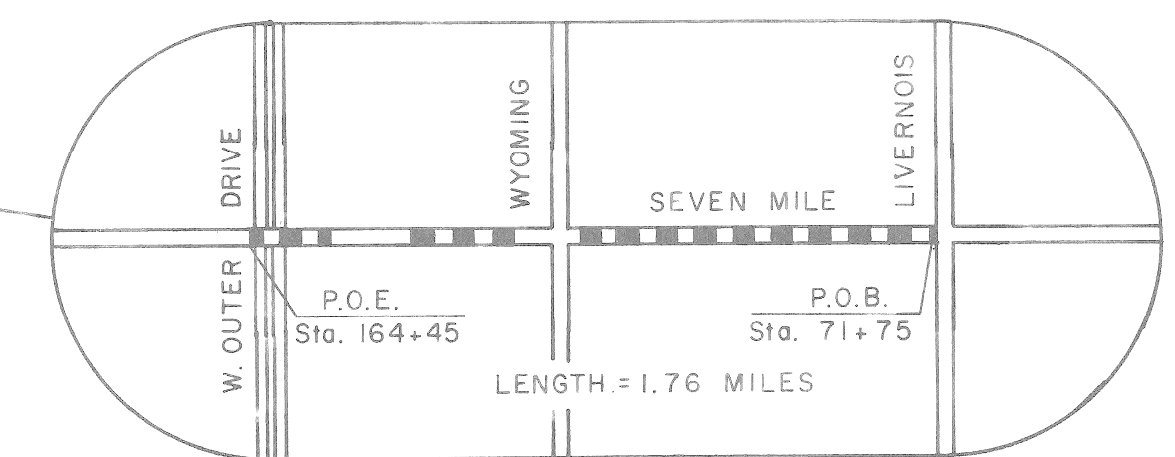
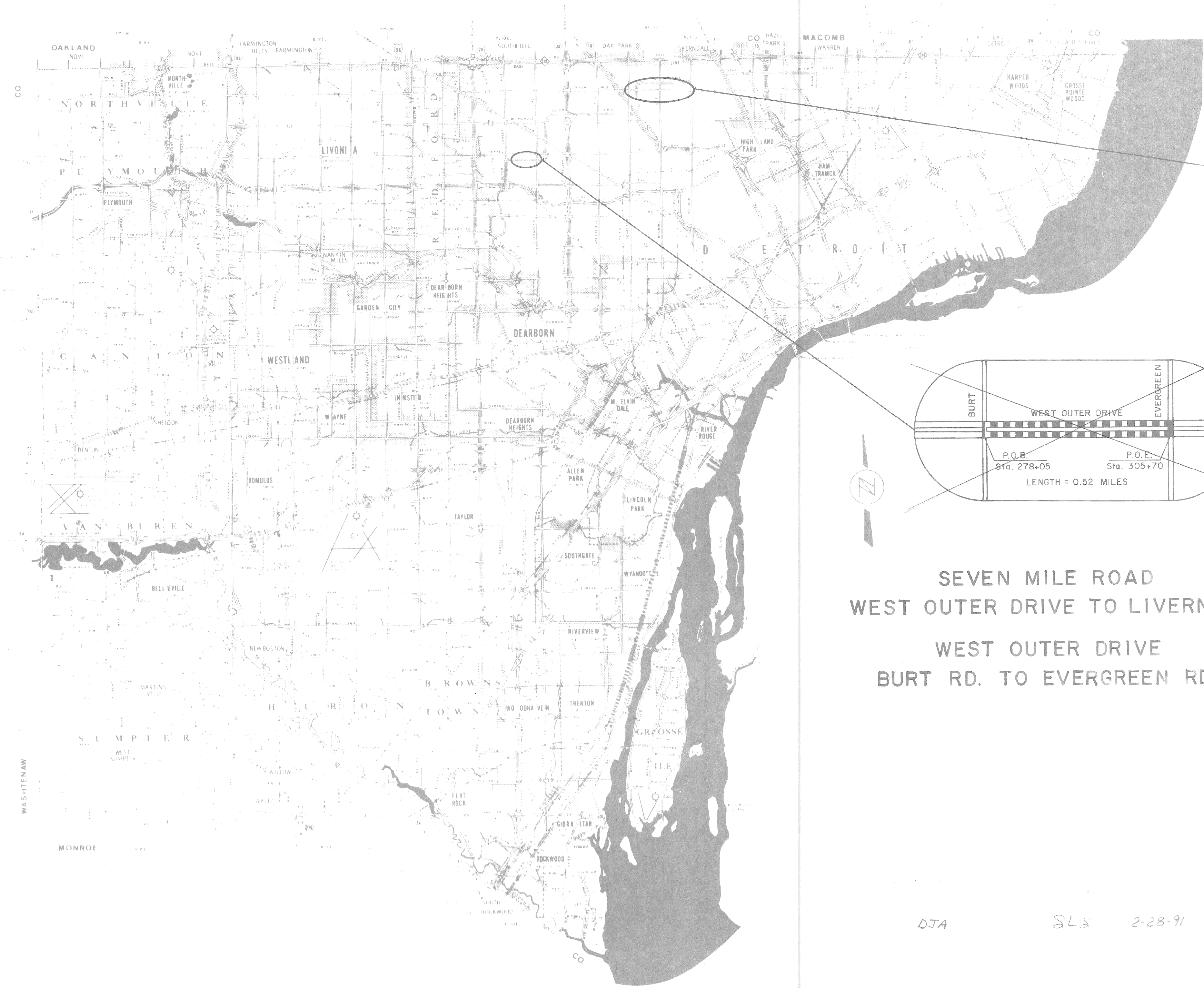
SEVEN MILE ROAD		
TRAFFIC DATA		
	1988	2008
A.D.T. (Two Way)	25,000	25,000
D.H.V. (One Way)	1240	1240
DESIGN SPEED:	40 M.P.H.	
POSTED SPEED:	30 M.P.H.	

WEST OUTER DRIVE		
TRAFFIC DATA		
	1988	2008
A.D.T. (Two Way)	10,000	10,000
D.H.V. (One Way)	540	540
DESIGN SPEED:	40 M.P.H.	
POSTED SPEED:	35 M.P.H.	

- INDEX TO SHEETS
1. TITLE SHEET
 - 2.-3. TYPICAL CROSS SECTIONS
 - 4.-8. RESURFACING PLANS
 - 9.-13. LANE LINE MARKINGS

- COUNTY STANDARD PLANS
- C-17-ICC3
 - C-17-IJ3
 - C-17-ILLI-X3
 - C-17-IBB5
 - C-17-IAA5
 - C-17-IN

- M.D.O.T. STANDARD PLANS
- II-29 D
 - VI-125 G



NOT CONSTRUCTED
AS PART OF
THIS CONTRACT

SEVEN MILE ROAD
WEST OUTER DRIVE TO LIVERNOIS

W.O. 46159

WEST OUTER DRIVE
BURT RD. TO EVERGREEN RD.

W.O. 46178

1988 PROJECT

APPROVED: _____
DIRECTOR OF ENGINEERING - COUNTY HIGHWAY ENGINEER

APPROVED: _____
UNIVERSITY OF MICHIGAN - CIVIL ENGINEER

PREPARED UNDER SUPERVISION OF

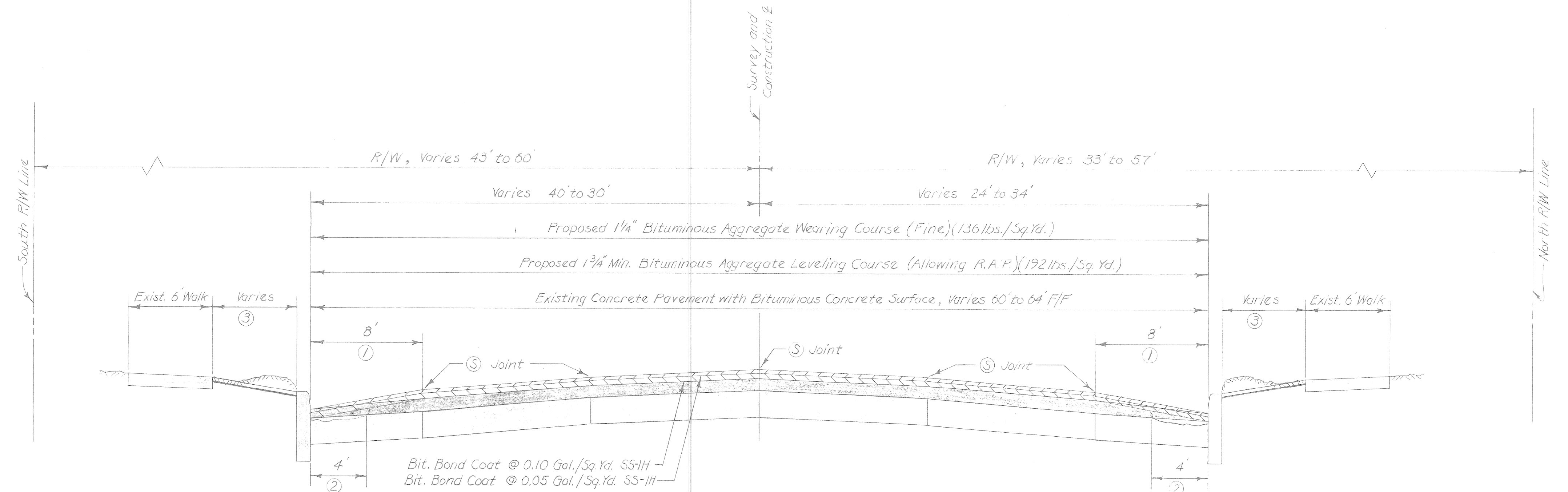
CONSTRUCTION ENGINEER

DJA SLS 2-28-91

TYPICAL CROSS-SECTIONS

SEVEN MILE WEST OUTER DRIVE TO LIVERNOIS

Scale: 1" = 5'



STA. 71+75 TO STA. 120+25
 STA. 129+80 TO STA. 143+95
 STA. 155+00 TO STA. 164+45

GENERAL NOTES

The location of all utilities shown on these plans is taken from the best available data. The Wayne County Office of Public Services (W.C.O.P.S.) will not be responsible for any omissions or variations from the locations shown. The Contractor shall contact the utility owners regarding their facilities including service connections prior to starting the work. Utility service connections are not shown on the plans and are not the responsibility of the W.C.O.P.S.

Existing castings damaged by the Contractor in the course of work shall be replaced by the Contractor at his own expense.

Street or road name signs and stop signs, in the way of construction, will be removed and reset immediately in a temporary location. Street name signs shall be finally set by the Contractor in a location designated by the Engineer, upon completion of fine grading in the section involved. This work shall be considered as included with the project.

Bituminous Bond Coat SS-1H will not be paid for separately and shall be considered included in the bituminous aggregate courses being applied.

* As directed by the Engineer.

NOTES

- ① Remove Bituminous Concrete Surface (Milling Method) (0'-3" Min at Gutter) or as directed by the Engineer. For details see Std. C-17-ILLI-K3.
- ② Remove Deteriorated Concrete by Compressed Air or other approved method, and Fill Voids with Bituminous Material (as directed by the Engineer). Paid for as "Bituminous Aggregate Wedge Course," 352 Tons (Est.) have been provided. Removal of Deteriorated Concrete is Included in "Removal of Bituminous Surface (Milling Method)."
- ③ 1550 Sq. Yds. of Class "A" Sodding have been provided for placement as directed by the Engineer. Removal of the Overburden is Included with "Class A Sodding." The quantity of Overburden is estimated to be 258 Cu. Yd. Top of Sod to be flush with Top of Curb, or as directed by the Engineer.

SUMMARY OF ESTIMATED QUANTITIES

ITEM	UNIT	QUANTITY
Removing Trees 8"-18" Dia.	Each	3
Removing Trees 19"-36" Dia.	Each	6
Removing Sidewalk	Sq. Yd.	430
Removing Old Pavement (Patching)	Sq. Yd.	2160
Removing Bituminous Surface (Milling Method)	Sq. Yd.	12,949
Preparing Existing Pavement	Sta.	72.1
Bituminous Aggregate Base Course (Patching) (Allowing R.A.P.)	Tons	3530
Bituminous Aggregate Leveling Course (Allowing R.A.P.)	Tons	5933
Bituminous Aggregate Wearing Course (Fine)	Tons	3879
Bituminous Aggregate Wedge Course	Tons	352
Sawed Longitudinal Plane of Weakness Joint in Bituminous Pavement	Lin. Ft.	36,050
Cold Patch Mixture	Tons	20
Adjusting Monument Boxes	Each	1
Adjusting Structures	Each	181
Adjusting Structures, Furnishing Cover "A"	Each	2
Adjusting Water Gate Box	Each	10
Adjusting Structures, Furnishing Cover "S"	Each	4
Reconstructing Structures	Lin. Ft.	60
Concrete Curb Cap	Lin. Ft.	2650
Concrete Curb Cap (Patching)	Lin. Ft.	1150
4" Concrete Sidewalk	Sq. Ft.	1546
4" Concrete Sidewalk Ramp	Sq. Ft.	2348
Lighted Arrow, Type "A", Furnished	Each	5
Lighted Arrow, Type "A", Operated	Each	3
Barricade Type II, Lighted, Furnished	Each	233
Barricade Type II, Lighted, Operated	Each	155
Barricade Type III, Lighted, 12' Wide, Furnished	Each	9
Barricade Type III, Lighted, 12' Wide, Operated	Each	6
Sign, Type "B", Temporary	Sq. Ft.	240
Temporary Pavement Marking, Type R	Lin. Ft.	1152
Temporary Pavement Marking, Type NR	Lin. Ft.	1152
Preformed Thermoplastic Pavement Marking, 6" Crosswalk Line	Lin. Ft.	1822
Preformed Thermoplastic Pavement Marking, 24" Stop Bar	Lin. Ft.	515
Lane Line Marking	Ps. Mi.	2.7
Class "A" Sodding	Sq. Yd.	1550
Topsail Surface, 3"	Sq. Yd.	40
Mobilization	L.S.	1
Minor Traffic Devices	L.S.	1
Flag Control	L.S.	1

AS
 DJA
 SLS
 2-28-91

REVISIONS	DRAWN BY S. VanDerMeulen	CHECKED BY T. KOMRAY	DATE 4-7-88	CORRECT
	TRACED BY	CHECKED BY	DATE	APPROVED
	CORRECT	Michael Sims	SQUAD LEADER	

WAYNE COUNTY OFFICE OF PUBLIC SERVICES
 ENGINEERING DIVISION

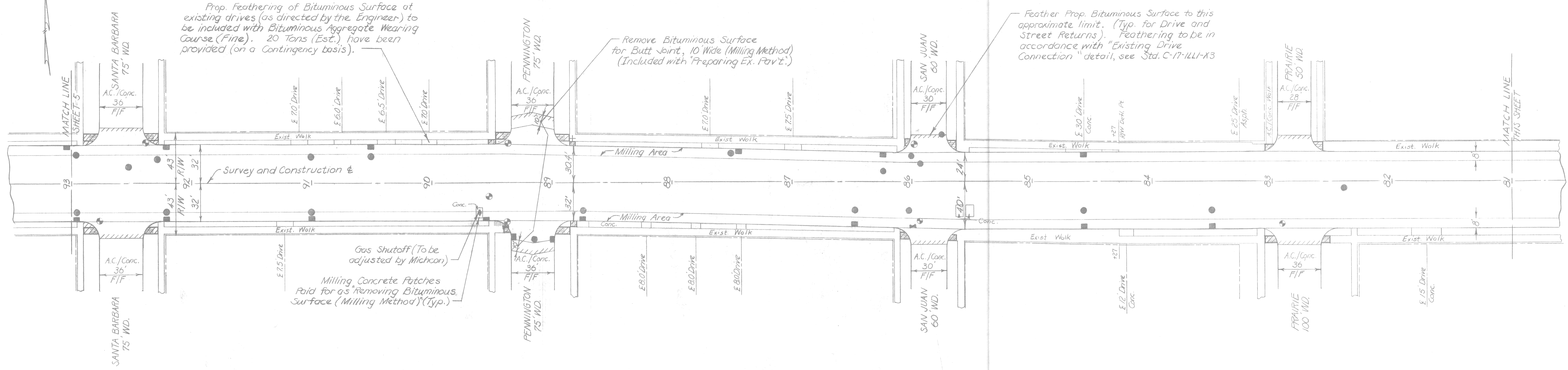
SEVEN MILE
 WEST OUTER DRIVE TO LIVERNOIS
 TYPICAL CROSS-SECTIONS

46159

5-2-1988

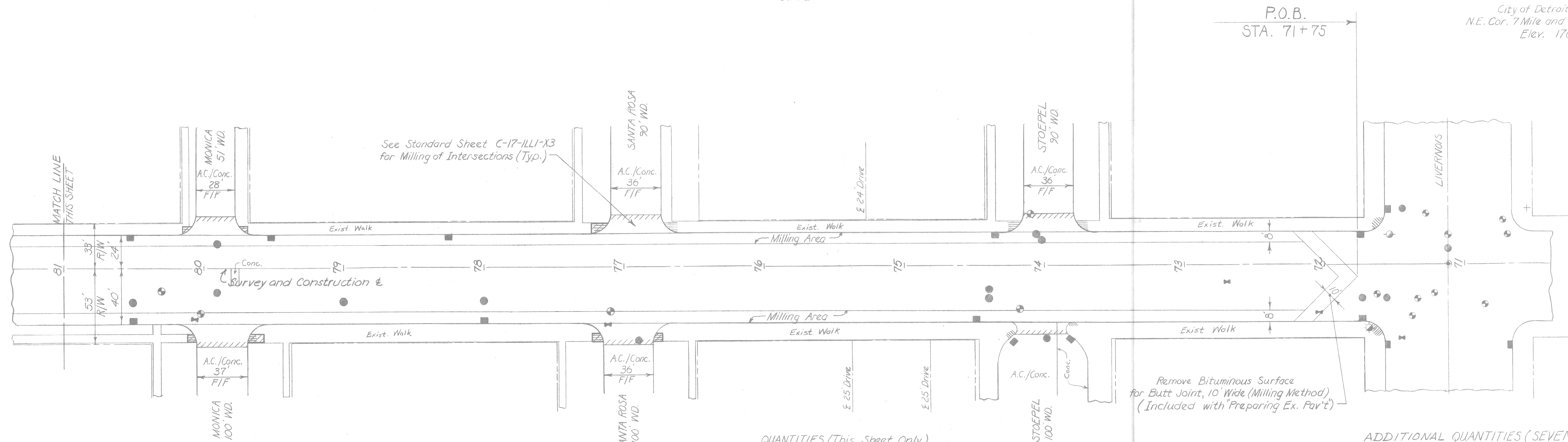
E-2-2

City of Detroit PBM 88-356A
N.E. Cor. 7 Mile and Pennington Key-Flag
Elev. 160.352



INTERSECTIONS	UNIT	Santa Barbara	Pennington	San Juan	Prairie	Monica	Santa Rosa	Stoepel
Removing Sidewalk	Sq. Yd.	26	28	12	15	13	12	—
4" Concrete Sidewalk	Sq. Ft.	120	—	12	12	30	—	—
4" Concrete Sidewalk Ramp	Sq. Ft.	75	255	96	127	89	110	—

PLAN
SCALE: 1" = 40'



City of Detroit PBM 27-250
N.E. Cor. 7 Mile and Livernois Key-Flag
Elev. 176.856

WAYNE COUNTY
"AS CONSTRUCTED"
BY: DJA CHECKED BY: S.L.S. DATE: 2-28-91

QUANTITIES (This Street Only)

Removing Bituminous Surface (Milling Method)	3793 Sq. Yds.
Bituminous Aggregate Leveling Course (Allowing R.A.P.)	1762 Tons
Bituminous Aggregate Wearing Course (Fine)	1146 Tons
Adjusting Structures	65 Each
Sawed Longitudinal Plane of Weakness Joint in Bit. Pav't.	10625 Lin. Ft.
Adjusting Water Gate Box	6 Each

ADDITIONAL QUANTITIES (SEVEN MILE)

Removing Old Pavement (Patching)	2160 Sq. Yd.
Preparing Existing Pavement	72.1 Sta.
Bituminous Aggregate Base Course (Patching)(Allowing R.A.P.)	3530 Tons
Reconstructing Structures	60 Lin. Ft.
Adjusting Structures, Furnishing Covers "A"	2 Each
Adjusting Structures, Furnishing Covers "S"	4 Each
Concrete Curb Cap (Patching)	1150 Lin. Ft.
Concrete Curb Cap	2650 Lin. Ft.
Cold Patch Mixture	20 Tons
Topsoil Surface, 3"	40 Sq. Yds.

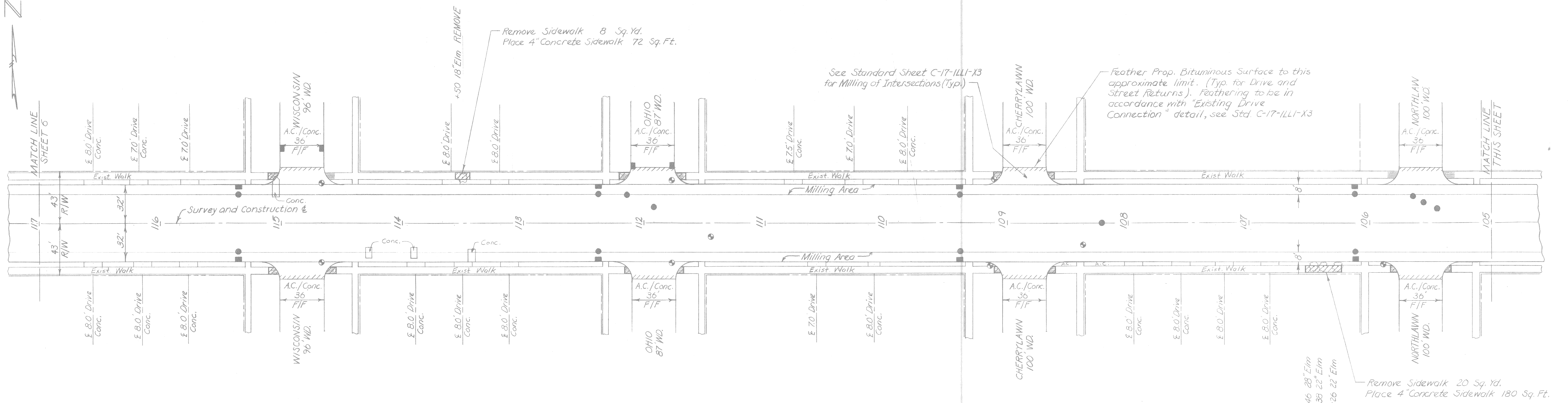
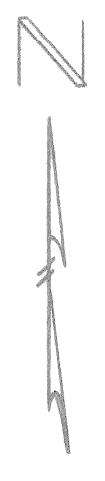
REVISIONS	DRAWN BY	CHECKED BY	DATE	CORRECT
	S. VanDerMeulen	T. Komray	4-8-88	Edna A. Martenuzzi

CORRECT: Michael J. Jans SQUAD LEADER
APPROVED: _____

WAYNE COUNTY OFFICE OF PUBLIC SERVICES
ENGINEERING DIVISION

SEVEN MILE
WEST OUTER DRIVE TO LIVERNOIS
RESURFACING PLAN

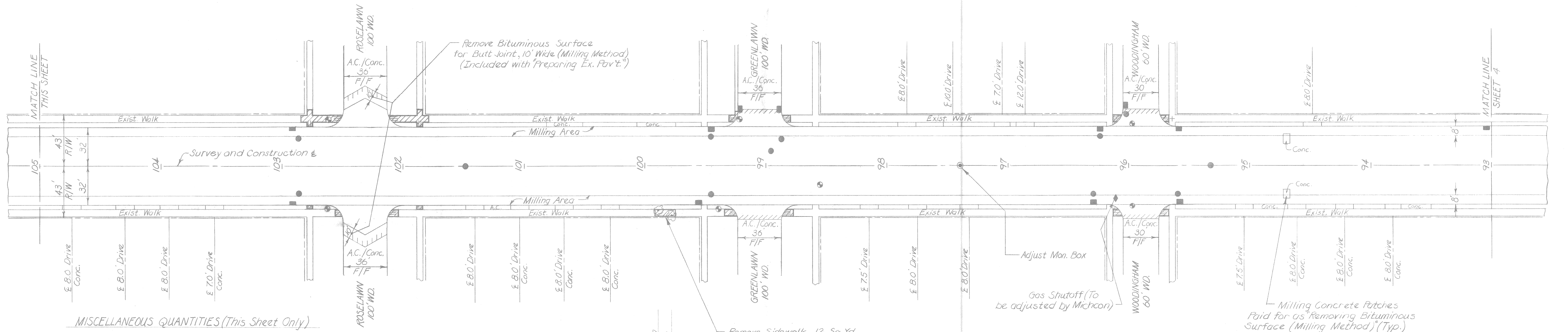
COUNTY PROJECT	46159	COUNTY JOB	
ISSUE NO.	1	SHEET NO.	4
DATE	5-2-1988		



INTERSECTION	UNIT	Wisconsin	Ohio	Cherrylawn	Northlawn	Roselawn	Greenlawn	Woodingham
Removing Sidewalk	Sq. Yd.	13	15	13	6	58	19	12
4" Concrete Sidewalk	Sq. Ft.	—	—	—	—	330	26	48
4" Concrete Sidewalk Ramp	Sq. Ft.	120	135	117	54	191	126	63

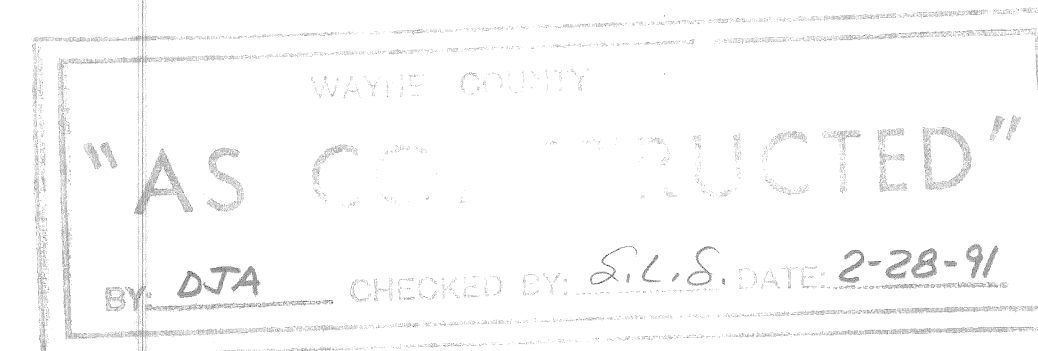
PLAN
SCALE: 1" = 40'

City of Detroit PBM 88-256
N.E. Cor. 7 Mile and Woodingham Key-Flag
Elev. 181, 178



MISCELLANEOUS QUANTITIES (This Sheet Only)

Removing Bituminous Surface (Milling Method)	4360	Sq. Yd.
Bituminous Aggregate Leveling Course (Allowing R.A.P.)	1995	Tons
Bituminous Aggregate Wearing Course (Fine)	1298	Tons
Adjusting Structures	54	Each
Sawed Longitudinal Plane of Weakness Joint in Bit. Pav't.	12000	Lin. Ft.
Removing Trees 8"-18"	2	Each
Removing Trees 19"-36"	4	Each
Adjusting Monument Boxes	1	Each

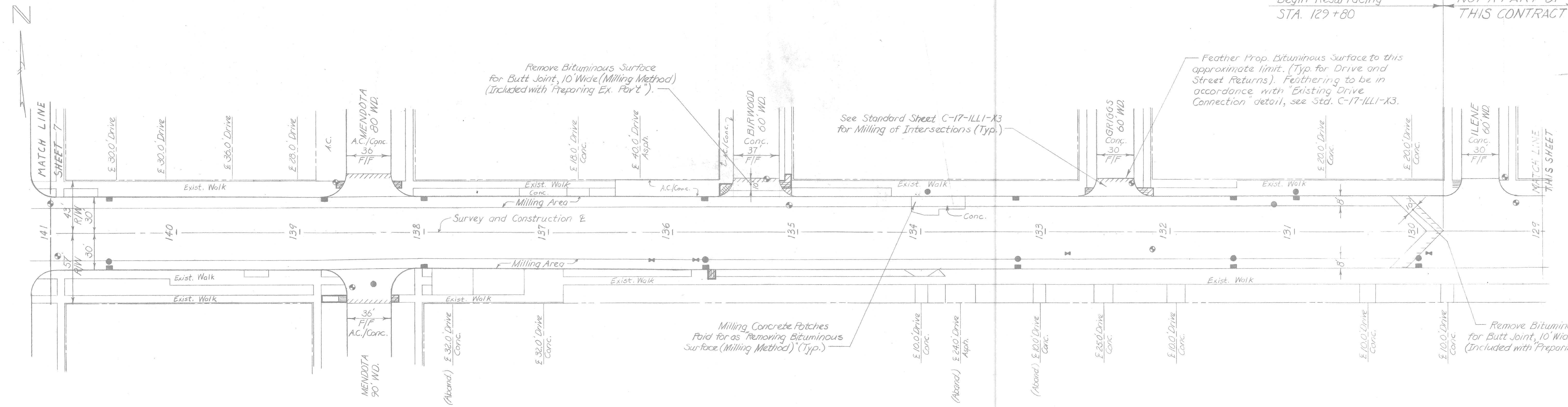


REVISIONS	DRAWN BY	CHECKED BY	DATE	CORRECT
	S. VanDerMeulen	T. KOMRAY	4-8-88	Edde A. Martens

WAYNE COUNTY OFFICE OF PUBLIC SERVICES
ENGINEERING DIVISION

COUNTY PROJECT	COUNTY JOB
46159	
ISSUE NO. 1	SHEET NO. 15
DATE 5-2-1988	

Begin Resurfacing STA. 129+80 NOT A PART OF THIS CONTRACT



INTERSECTIONS	UNIT	Mendota	Birwood	Griggs	Ilene	Washburn	Wyoming	Kentucky	Indiana
Removing Sidewalk	Sq. Yd.	12	25	5	—	—	—	—	16
4\" Concrete Sidewalk	Sq. Ft.	84	52	28	—	—	—	—	36
4\" Concrete Sidewalk Ramp	Sq. Ft.	144	156	19	—	—	—	—	105

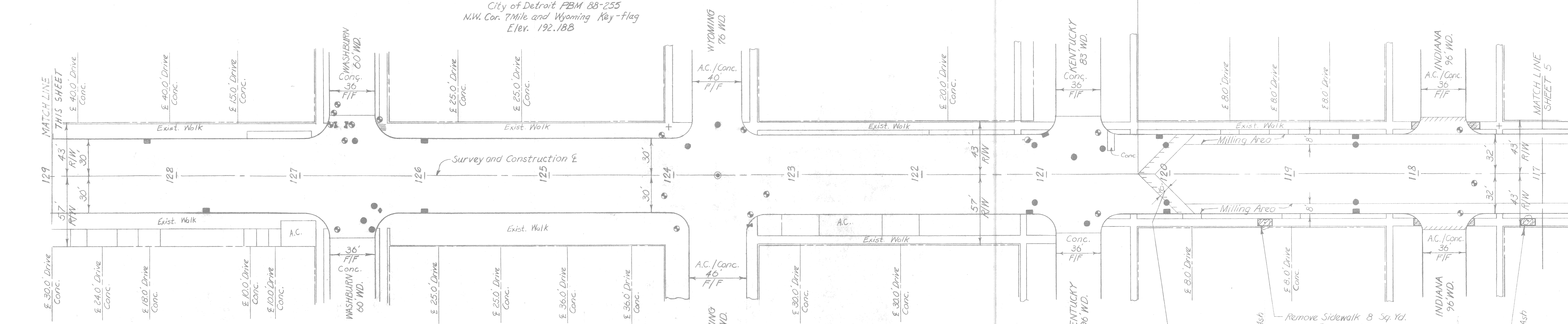
PLAN SCALE: 1\"/>

NOTE: NOT A PART OF THIS CONTRACT

End Resurfacing STA. 120+25

City of Detroit PBM 88-255A N.E. Cor. 7 Mile and Indiana Key-Flag Elev. 191.214

City of Detroit PBM 88-255 N.W. Cor. 7 Mile and Wyoming Key-Flag Elev. 192.188



MISCELLANEOUS QUANTITIES (This Sheet Only)

Removing Bituminous Surface (Milling Method)	2467	Sq. Yd.
Bituminous Aggregate Leveling Course (Allowing R.A.P.)	1104	Tons
Bituminous Aggregate Wearing Course (Fine)	718	Tons
Adjusting Structures	31	Each
Sawed Longitudinal Plane of Weakness Joint in Bit. Pav't.	7225	Lin. Ft.
Removing Trees 8\"-18\"	1	Each
Removing Trees 19\"-36\"	1	Each
Adjusting Water Gate Box	3	Each

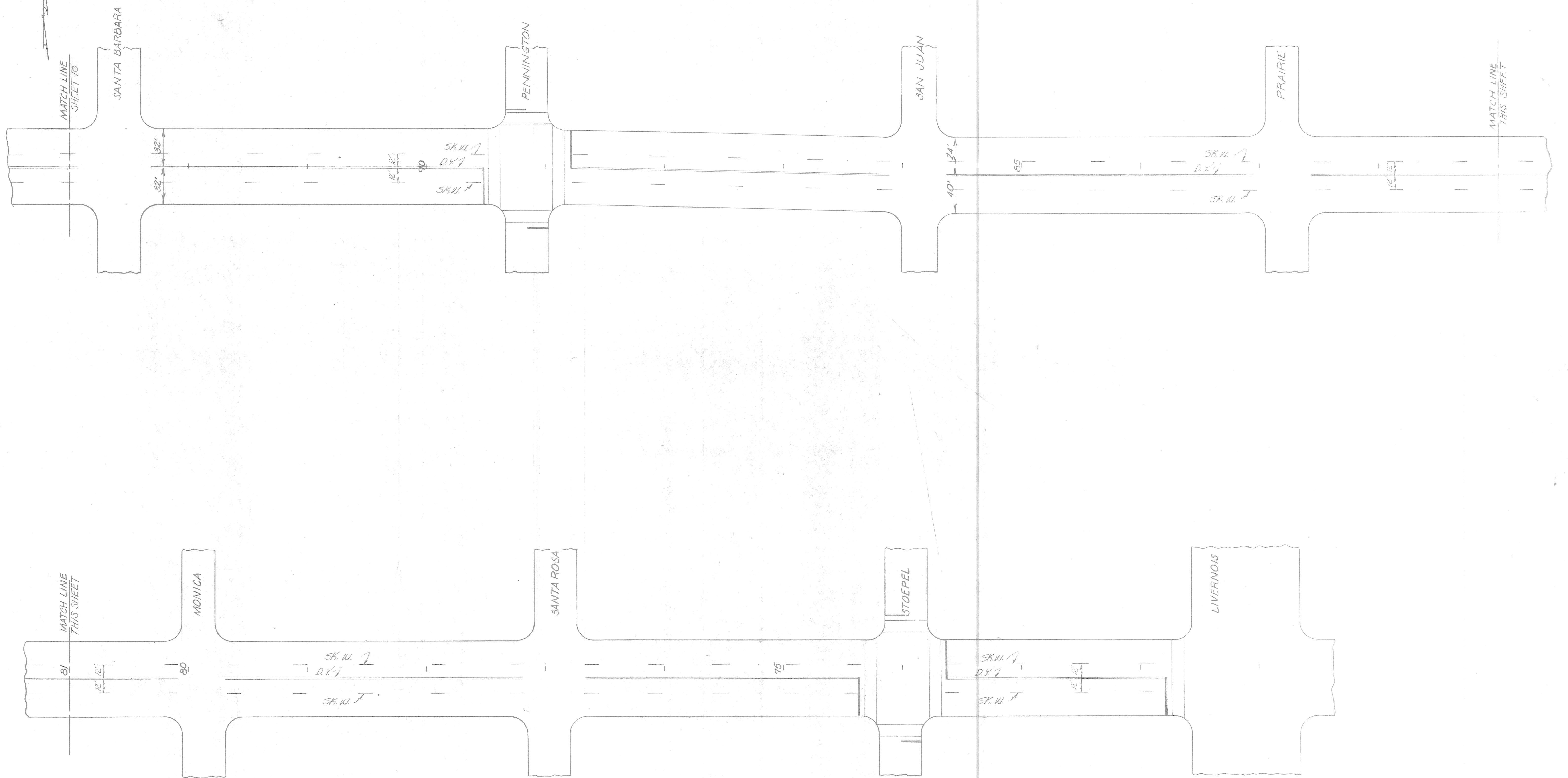
WAYNE COUNTY "AS CONSTRUCTED" BY: DJA CHECKED BY: S.L.S. DATE: 2-28-91

Remove Bituminous Surface for Butt Joint, 10' Wide (Milling Method) (Included with "Preparing Ex. Pav't")

REMOVE +23 21\" Ash Remove Sidewalk 8 Sq. Yd. Place 4\" Concrete Sidewalk 72 Sq. Ft.

REMOVE +12 13\" Ash Remove Sidewalk 8 Sq. Yd. Place 4\" Concrete Sidewalk 72 Sq. Ft.

REVISIONS	DRAWN BY: S. VanDerMeulen	CHECKED BY: T. KOMRAY	DATE: 4-8-88	CORRECT	WAYNE COUNTY OFFICE OF PUBLIC SERVICES ENGINEERING DIVISION	SEVEN MILE WEST OUTER DRIVE TO LIVERNOIS RESURFACING PLAN	COUNTY PROJECT: 46159	COUNTY JOB: 1
	TRACED BY:	CHECKED BY:	DATE:	CORRECT			ISSUE NO: 1	SHEET NO: 6
	APPROVED: Michael S. ... SQUAD LEADER						DATE: 5-2-1988	



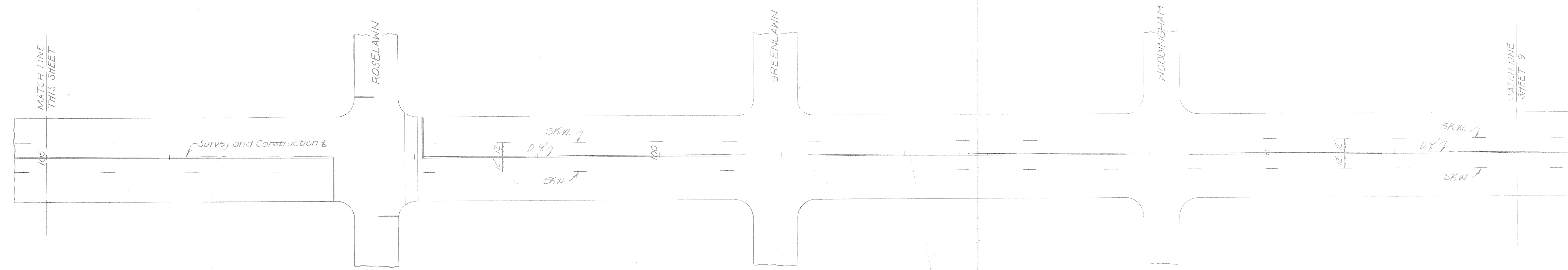
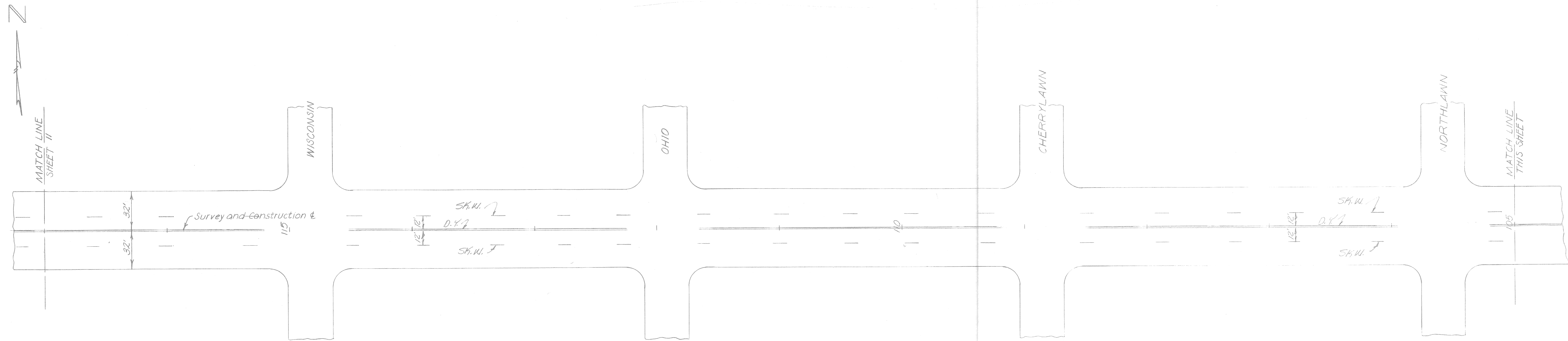
WAYNE COUNTY
 "AS CONSTRUCTED"
 BY: DTA CHECKED BY: S.L.S. DATE: 2-28-91

REVISIONS			
	DRAWN BY G.G.	CHECKED BY UH	DATE 1-88
	CORRECT		
	CORRECT		
	APPROVED <i>James A. Valdes</i> SQUAD LEADER		

WAYNE COUNTY OFFICE OF PUBLIC SERVICES
 ENGINEERING DIVISION

SEVEN MILE
 WEST OUTER DRIVE TO LIVERNOIS
 LANE LINE MARKINGS

COUNTY PROJECT W046159	COUNTY JOB
ISSUE NO. 1	SHEET NO. 9
DATE 5-2-1988	



WAYNE COUNTY
 "AS CONSTRUCTED"
 BY: DJA CHECKED BY: S.L.S. DATE: 2-28-91

REVISIONS	

DRAWN BY: G.G.
 CHECKED BY: J.H.
 DATE: 1-88

CORRECT
 APPROVED: *Wm. A. Kucis*
 SQUAD LEADER

CORRECT
 APPROVED: *Wm. A. Kucis*

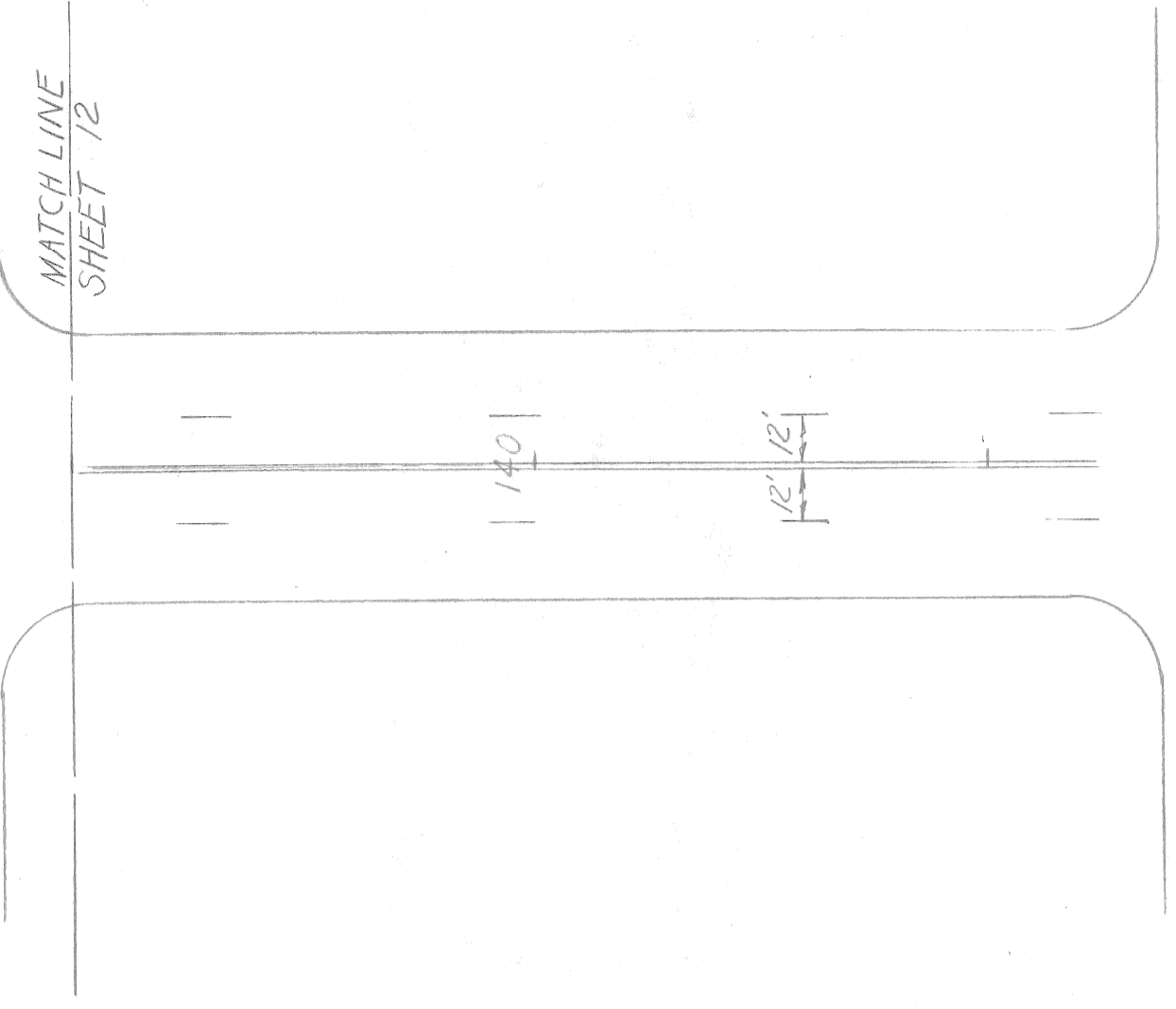
WAYNE COUNTY OFFICE OF PUBLIC SERVICES
 ENGINEERING DIVISION

SEVEN MILE
 WEST OUTER DRIVE TO LIVERNOIS
 LANE LINE MARKINGS

COUNTY PROJECT W046159	COUNTY JOB
ISSUE NO. 1	SHEET NO. 10
DATE: 5-2-1988	

NOT A PART OF THIS CONTRACT

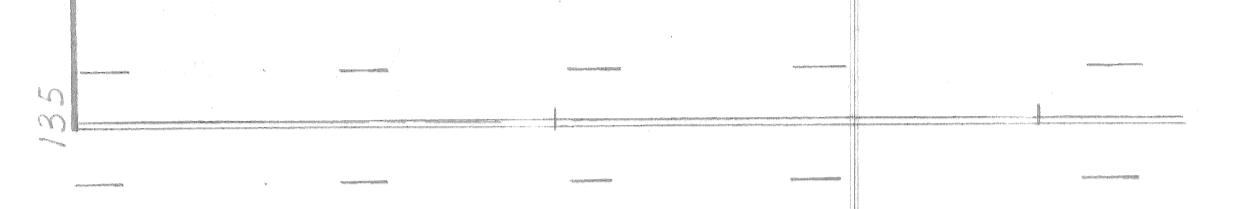
MATCH LINE SHEET 12



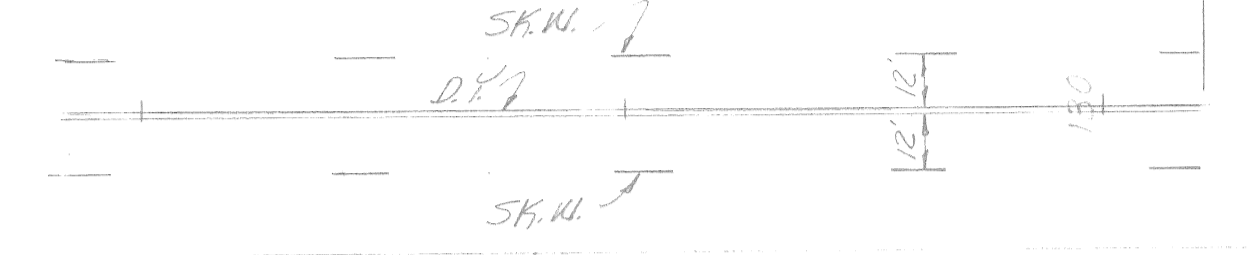
MENDOTA

SK.N. 1
D.Y. 1
SK.N. 2

BIRWOOD



GRISSE



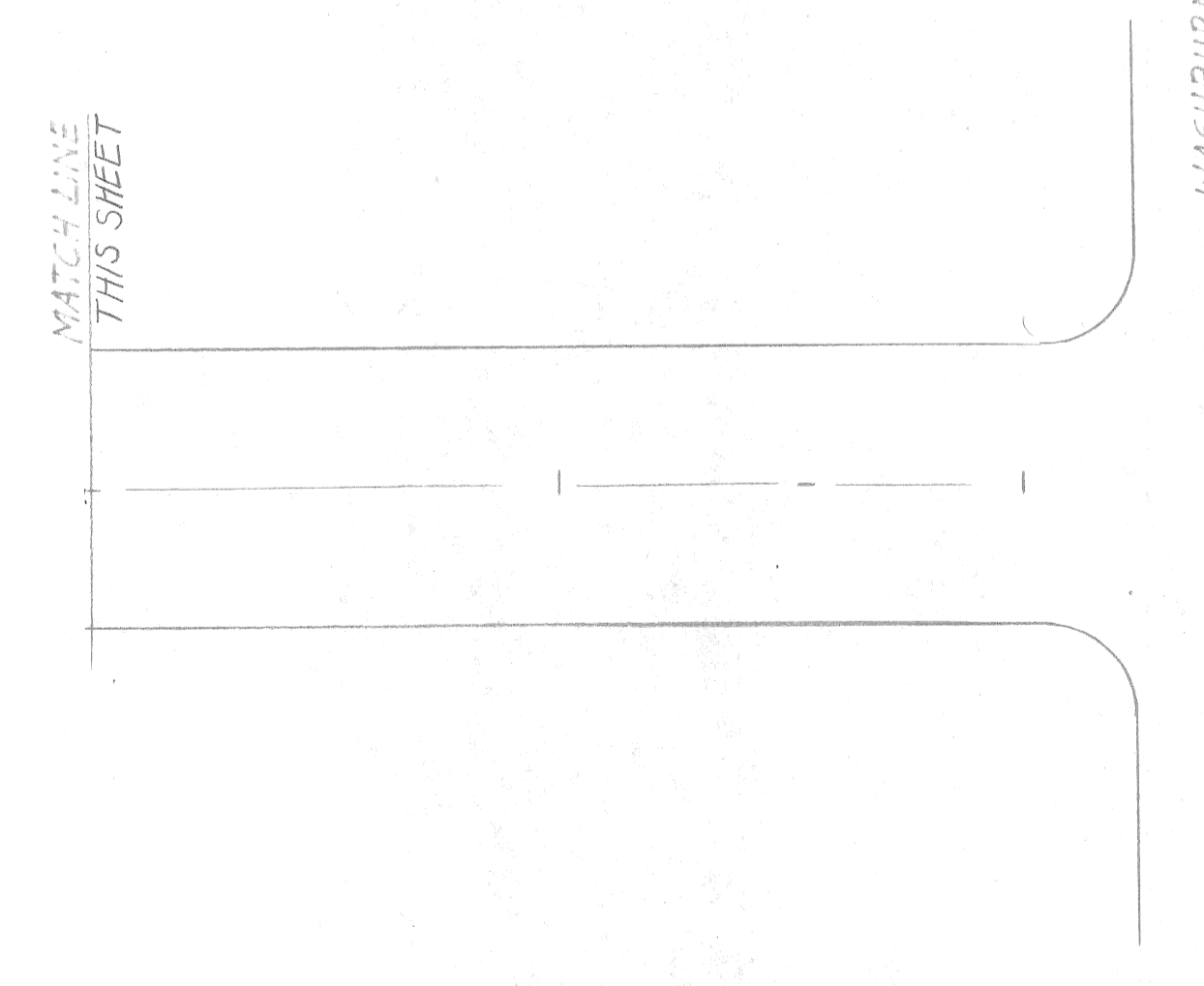
STA. 129+80

LIVERNOIS

MATCH LINE SHEET 11

NOTE: NOT A PART OF THIS CONTRACT

MATCH LINE THIS SHEET



WASHBURN

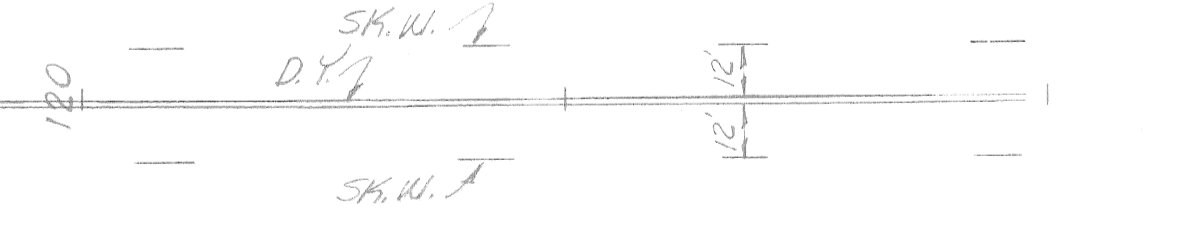


WYOMING



KENTUCKY

STA. 120+25



INDIANA

MATCH LINE SHEET 10

WAYNE COUNTY
"AS CONSTRUCTED"
BY: DJA CHECKED BY: S.L.S. DATE: 2-28-91

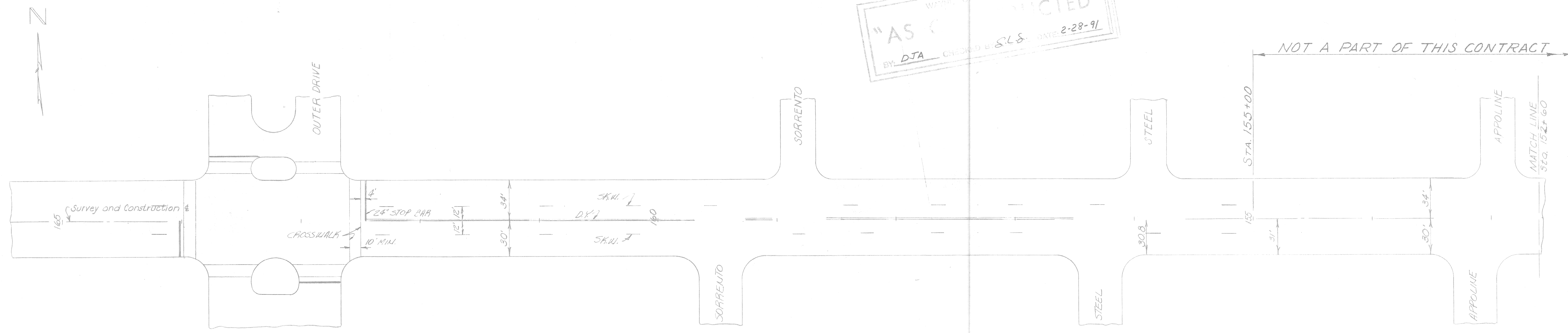
REVISIONS	DRAWN BY GG	CHECKED BY UH	DATE 1-88	CORRECT Eddie A. Martuzzi
	TRACED BY	CHECKED BY	DATE	APPROVED [Signature]
	CORRECT Werner A. Kulis SQUAD LEADER			

WAYNE COUNTY OFFICE OF PUBLIC SERVICES
ENGINEERING DIVISION

SEVEN MILE
WEST OUTER DRIVE TO LIVERNOIS
LANE LINE MARKINGS

COUNTY PROJECT W046159	COUNTY JOB
ISSUE NO. 1	SHEET NO. 11
DATE 5-2-1988	

WAYNE COUNTY
 "AS CONSTRUCTED"
 BY: DJA CHECKED BY: SLS DATE: 2-28-91



QUANTITIES

PREFORMED THERMOPLASTIC PAVEMENT MARKING 24" STOP BAR	515	LIN. FT.
PREFORMED THERMOPLASTIC PAVEMENT MARKING 6" CROSSWALK	1822	LIN. FT.
LANE LINE MARKING		2.7 PASS MILE
ITEM	UNIT	AMOUNT
LIGHTED ARROW TYPE "A" FURNISHED	EA.	5
LIGHTED ARROW TYPE "A" OPERATED	EA.	3
BARRICADE TYPE II LIGHTED, FURNISHED	EA.	233
BARRICADE TYPE II LIGHTED, OPERATED	EA.	155
BARRICADE TYPE III LIGHTED 12' WIDE, FURNISHED	EA.	9
BARRICADE TYPE III LIGHTED 12' WIDE, OPERATED	EA.	6
SIGN TYPE "B" TEMPORARY	S.F.	240
TEMPORARY PAVEMENT MARKING TYPE UR	L.F.	1152
TEMPORARY PAVEMENT MARKING TYPE R	L.F.	1152

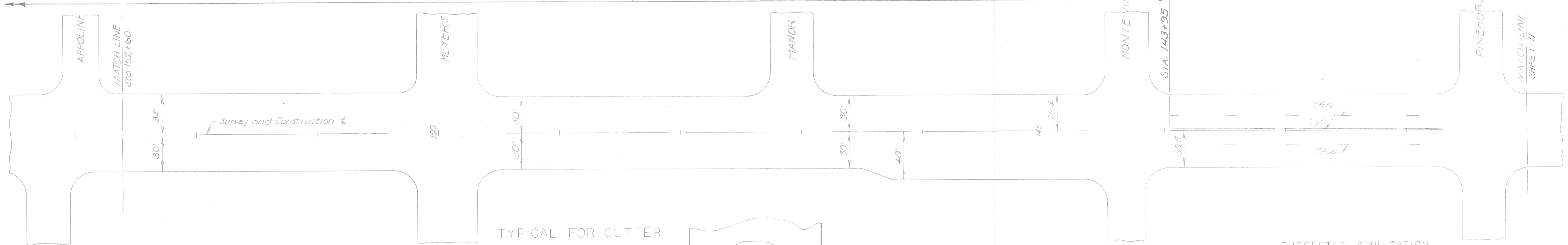
CONSTRUCTION SIGNING

SIGN LEGEND	QUAN.	SIZE	SQ. FT.
W20-1 CONSTRUCTION AHEAD	6	48"X48"	96
W20-5 RIGHT LANE CLOSED AHEAD	3	48"X48"	48
W21-1a MEN WORKING	2	48"X48"	32
W13-1 ADVISORY SPEED PANEL (25)	2	24"X24"	32
W4-2 PAVEMENT TRANSITION (RIGHT)	2	48"X48"	32
TOTALS	15		240

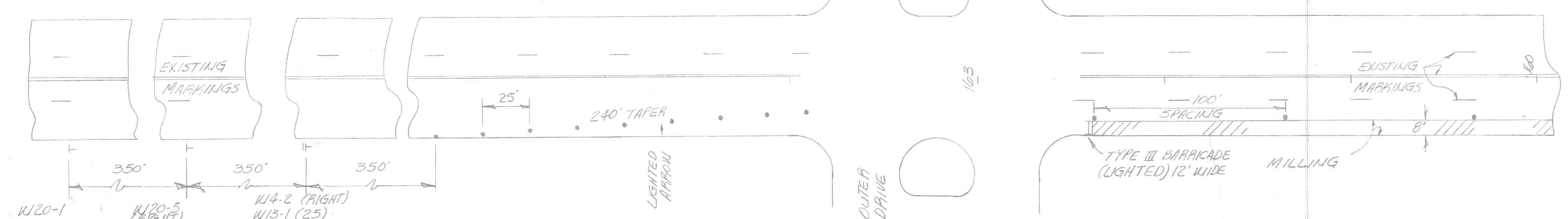
GENERAL CONSTRUCTION SIGNING



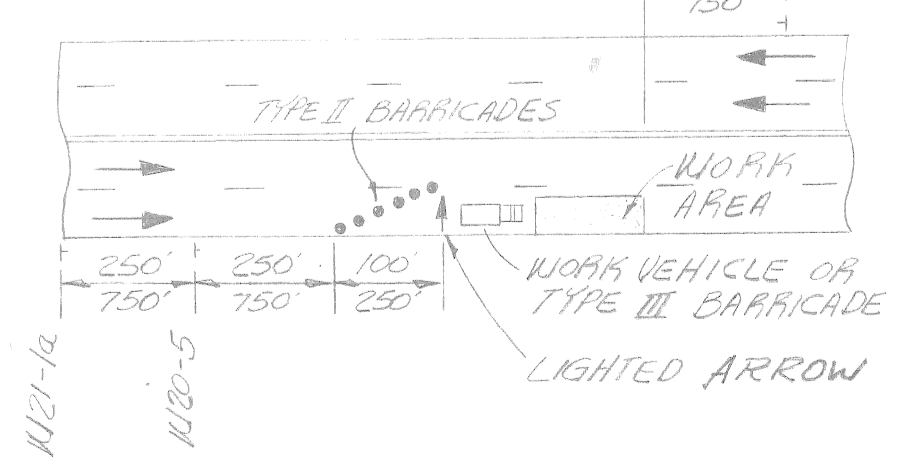
NOTE: NOT A PART OF THIS CONTRACT



TYPICAL FOR CUTTER LANE MILLING



SUGGESTED APPLICATION OF TRAFFIC CONTROL FOR SHORT TERM ACTIVITIES



REVISIONS	DRAWN BY G.G.	CHECKED BY UH	DATE 1-88	CORRECT S. A. Martuzzi
	TRACED BY	CHECKED BY	DATE	APPROVED
	CORRECT Wayne A. Kukus SQUAD LEADER			

WAYNE COUNTY OFFICE OF PUBLIC SERVICES
 ENGINEERING DIVISION

SEVEN MILE
 WEST OUTER DRIVE TO LIVERNOIS
 LANE LINE MARKINGS

COUNTY PROJECT W046159	COUNTY JOB
ISSUE NO. 1	SHEET NO. 12
DATE 5-2-1988	