

MILLER RD. - FORT ST. TO DIX AVE.

STANDARD PLANS
 C-17-1A5
 C-17-1B5
 C-17-1E5

INDEX TO SHEETS

1	TITLE SHEET
	PROJECT # 45649
	MILLER ROAD
	FORT ST. TO DIX AVE.
2	TYPICAL CROSS SECTIONS
3-4	PLAN SHEETS
5	ASPHALTIC CONCRETE RESURFACING DETAILS

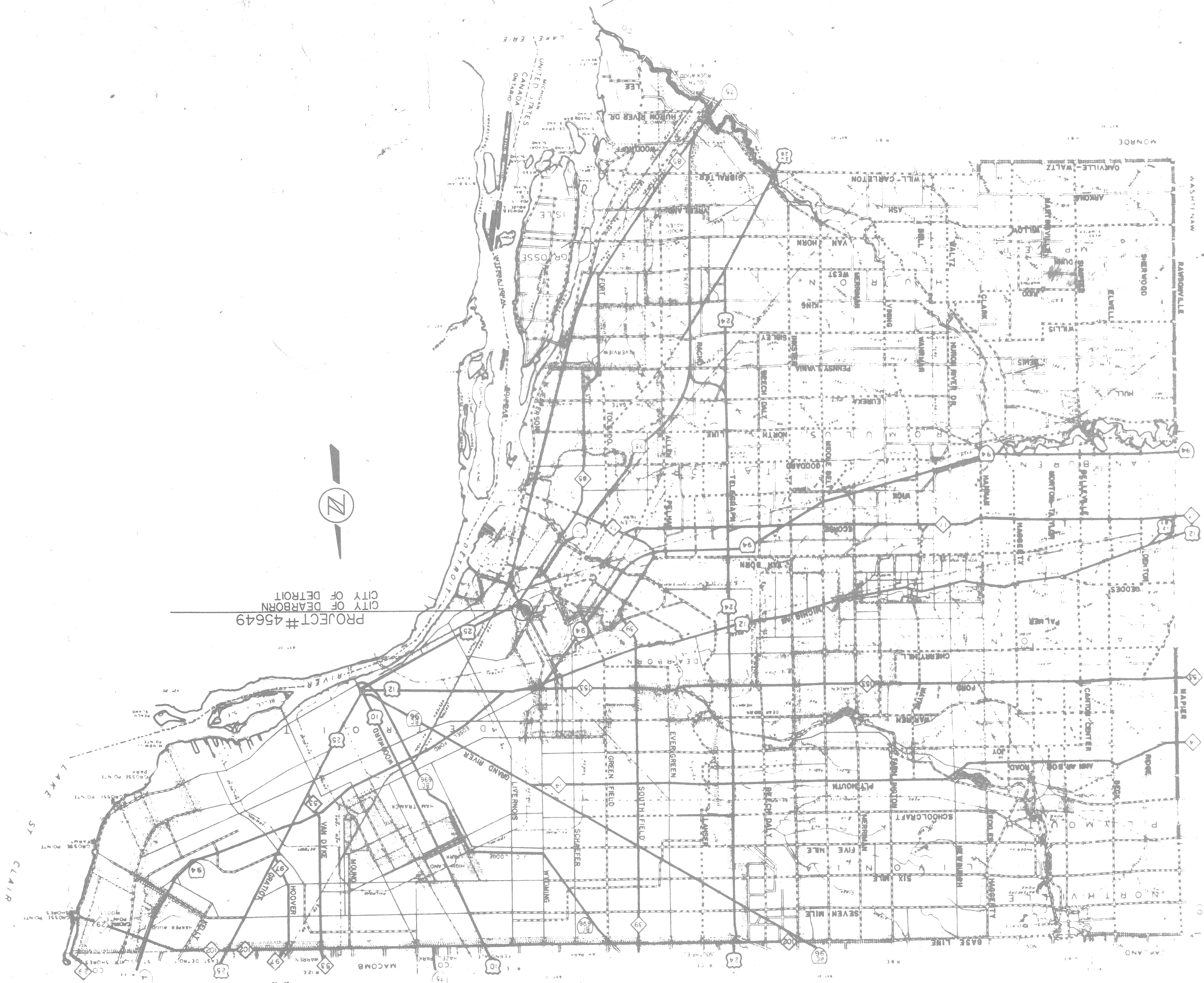
BOARD OF
 WAYNE COUNTY ROAD COMMISSIONERS
 DETROIT, MICHIGAN

CHAIRMAN
 MICHAEL BERRY

VICE CHAIRMAN
 JOSEPH M. HERRON

COMMISSIONER
 FREDIE G. BURTON

RESURFACING PROJECT



CITY OF DETROIT
 PROJECT # 45649

1978 A.C. PROJECT

APPROVED: *M. J. [Signature]* 5-30-78
 REG. PRO. ENG.
 CHIEF ENGINEER DESIGN DIVISION

APPROVED: *[Signature]*
 REG. PRO. ENG.
 COUNTY HIGHWAY ENGINEER

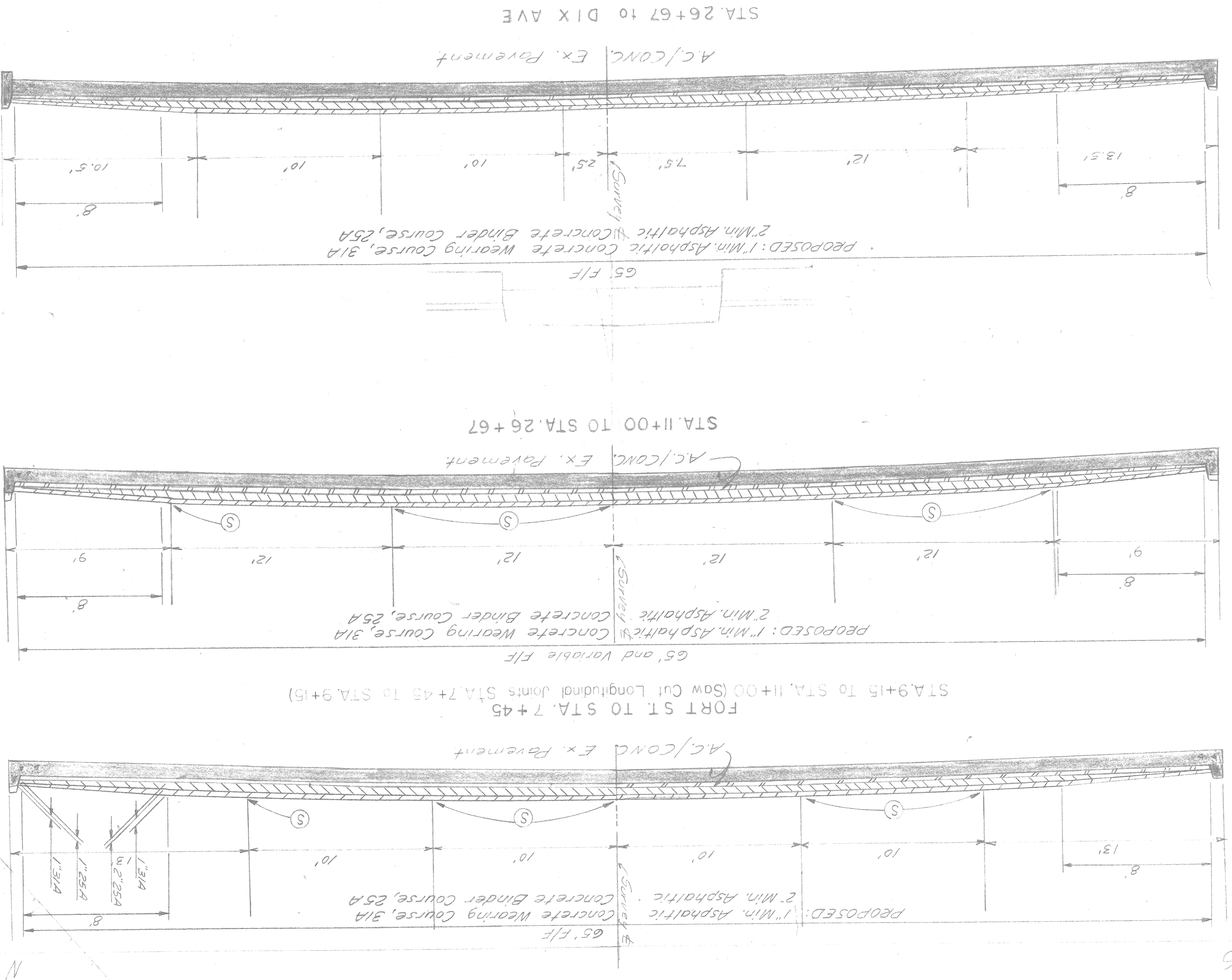
PREPARED UNDER SUPERVISION OF
 REGISTERED PROFESSIONAL ENGINEER

SEAL OF PROFESSIONAL ENGINEER
 J. DEGENET
 472
 REG. NO. 7472
 5-30-78

MILLER ROAD
FORT ST. TO DIX AVE.

TYPICAL CROSS-SECTION

Scale: 1" = 4'



Note: Field Personnel shall contact Cities of Detroit and Dearborn regarding replacement of worn and Dearborn covers in the pavement.

⊙=Saw Cut Longitudinal Joint

1978 A.C. PROJECT 45649

APPROVED: [Signature]
CORRECT: [Signature]

ITEM	QUANTITIES
REMOVING ASPHALT SURFACE	3166 SQ YD
REMOVING ASPHALT SURFACE	11 SQ YD
REMOVING OLD PAVEMENT (PATCHING)	2,170 SQ YD
REMOVING CURB (PATCHING)	2 EA
ADJUSTING MANHOLE, FURNISHING COVER	2 EA
ADJUSTING CATCH BASIN, FURNISHING	5 EA
COVER "X"	2 EA
ADJUSTING WATER SHUTTER RISER BOX	1 EA
ADJUSTING MONUMENT BOX	20 LMF
RECONSTRUCTING M.H., C.B. OR M.G.W.	49 EA
ADJUSTING COVERS	20 LMF
6" PIPE UNDERDRAIN	50 YD
CONCRETE PAVEMENT, 9" (PATCHING)	50 YD
CONCRETE CURB, STRAIGHT	50 YD
INTEGRAL CONCRETE CURB AND WALK	50 YD
AGGREGATE SHOULDER	50 YD
CALCIUM CHLORIDE, APPLIED	99 TONS
4" CONCRETE SIDEWALK (55-1H)	3844 GAL
BITUMINOUS BOND COAT	99 GAL
BITUMINOUS PRIME COAT	99 GAL
NOTCHING CONCRETE PAVEMENT FOR JOINT	34 STA
PREPARING EXISTING PAVEMENT	34 STA
SAWED LONGITUDINAL PLANE OF WEARERS DRIFT IN	1630 LMF
CHIPPING EXISTING CONCRETE PAVEMENT	10 SQ YD
CLEANING EXIST. STREAM DRAINAGE STRUCTURES	53 EA
CONCRETE CURB CAP (PATCHING)	214 L.F.
CONCRETE CURB CAP	230 L.F.
CONCRETE CURB CAP (PATCHING)-SPECIAL	101 L.F.
USE OF NATURAL AGGREGATES	2916 TONS
ASPH. CONC. BINDER COURSE, 2.5A	1405 TONS
ASPH. CONC. BINDER COURSE, 9A	1405 TONS
ASPH. CONC. WEARING COURSE, 31A	482 TONS
ASPH. CONC. BASE COURSE, 25A	482 TONS

Note: Width per station for preparing existing pavement will vary from 65' to 76' (including island areas)

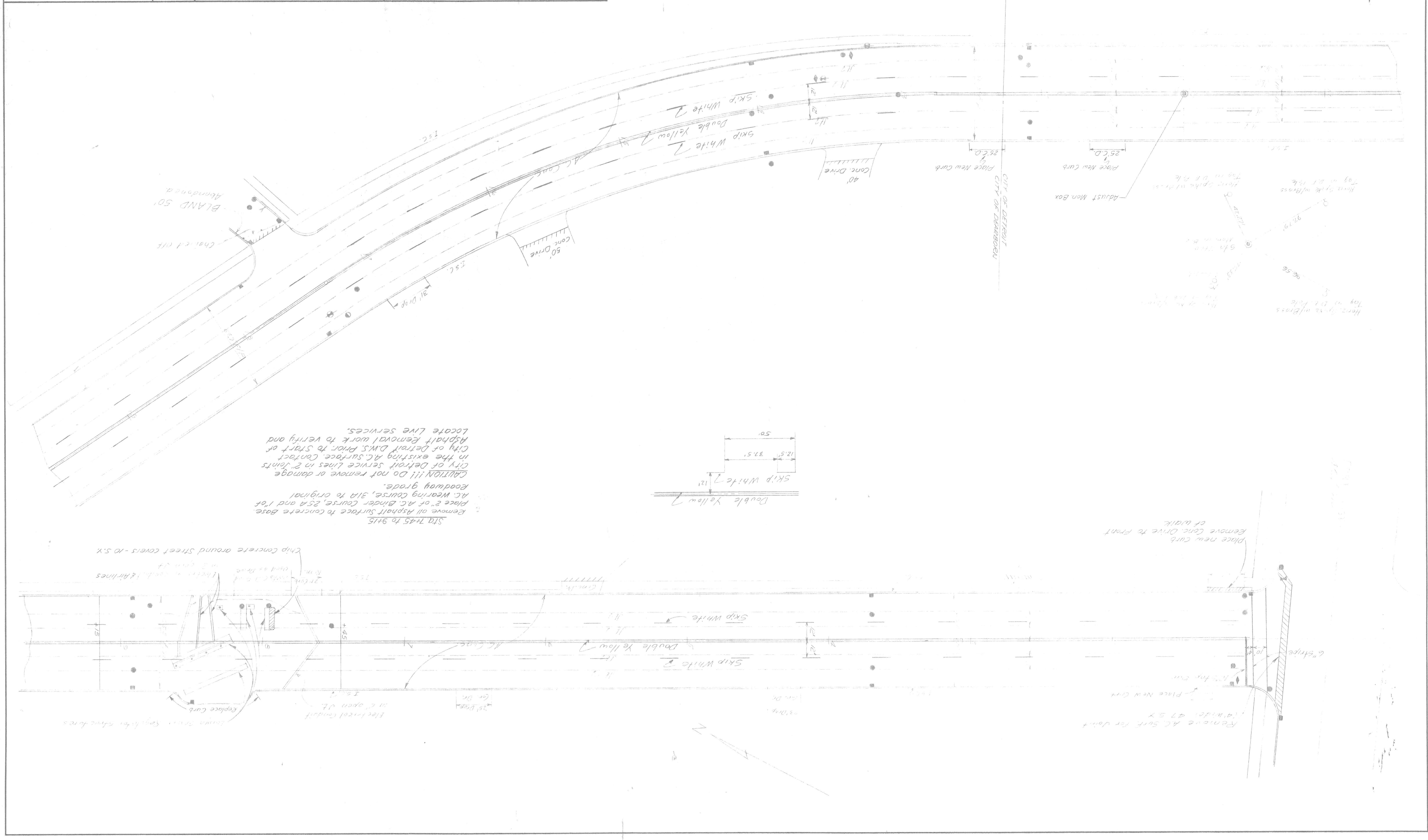
(ESTIMATED QUANTITIES FOR ASPHALTIC CONCRETE MIXTURES ARE BASED ON THE USE OF NATURAL AGGREGATES)

APPROVED: [Signature]
 ENGINEER OF HIGHWAY DESIGN
 REG. PRO. ENG.
 CORRECT: [Signature]
 ASST. ENGINEER OF HIGHWAY DESIGN
 REG. PRO. ENG.
 DRAWN BY: [Signature]
 CHECKED BY: [Signature]

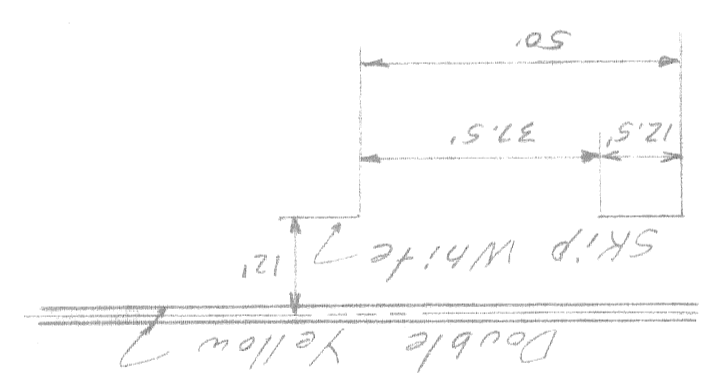
SCALE: 1"=30'

BOARD OF
 WAYNE COUNTY ROAD COMMISSIONERS
 DETROIT 26, MICHIGAN
 VICE CHAIRMAN
 CHAIRMAN

NO.	ITEM	BY	DATE



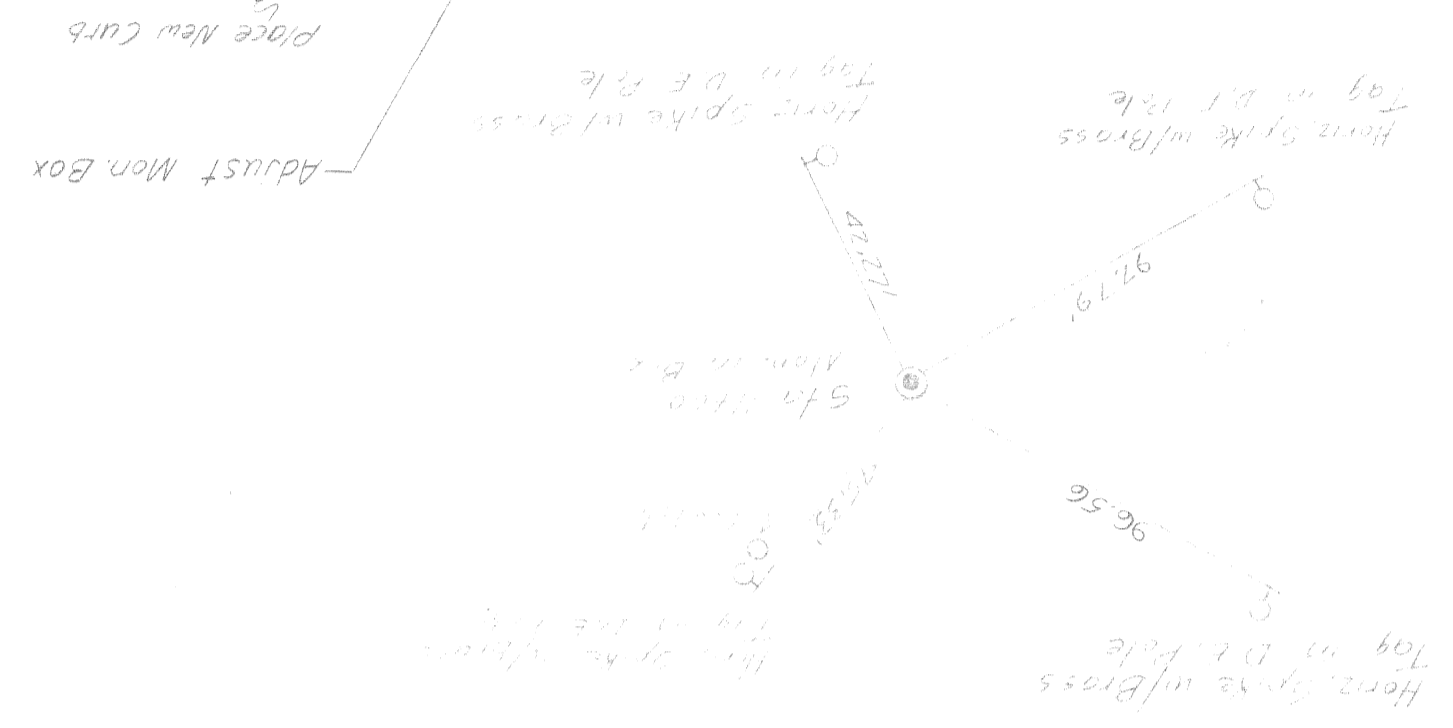
Remove all Asphalt surface to concrete base
 Place 2" of A.C. Binder Course, 2.5" and 1" of
 A.C. wearing course, 31A to original
 Roadway grade.
 CAUTION!!! Do not remove or damage
 City of Detroit service lines in 2' Joints
 in the existing A.C. surface. Contact
 City of Detroit DWS. Prior to start of
 Asphalt removal work to verify and
 locate live services.



Remove AC Surf. for joint
 (width) 47.5'
 Place New Curb
 Place new curb
 Remove Conc. Drive to front
 of walk

Chip concrete around street covers - 10 S.Y.
 Place 2" of A.C. Binder Course, 2.5" and 1" of
 A.C. wearing course, 31A to original
 Roadway grade.
 CAUTION!!! Do not remove or damage
 City of Detroit service lines in 2' Joints
 in the existing A.C. surface. Contact
 City of Detroit DWS. Prior to start of
 Asphalt removal work to verify and
 locate live services.

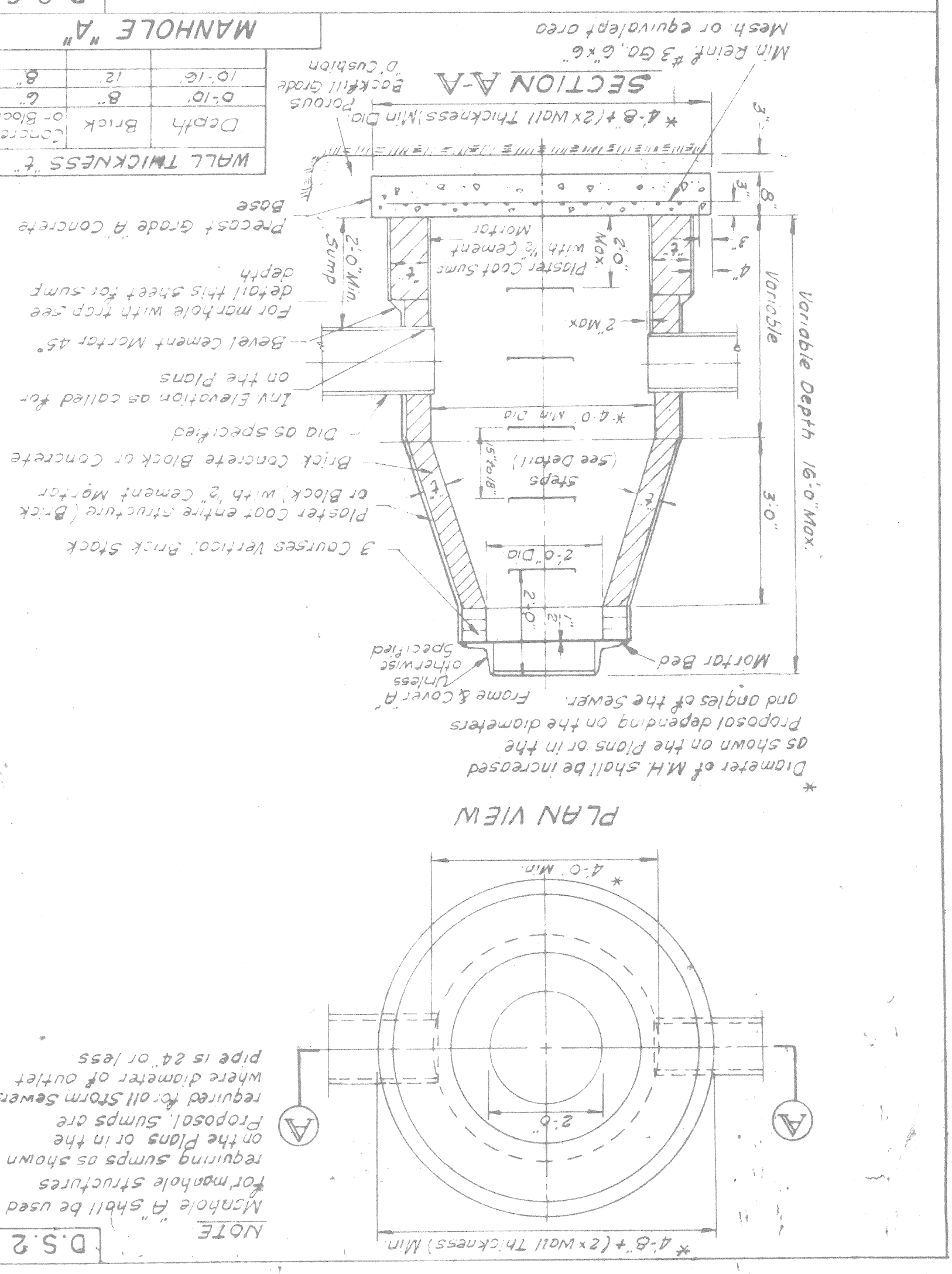
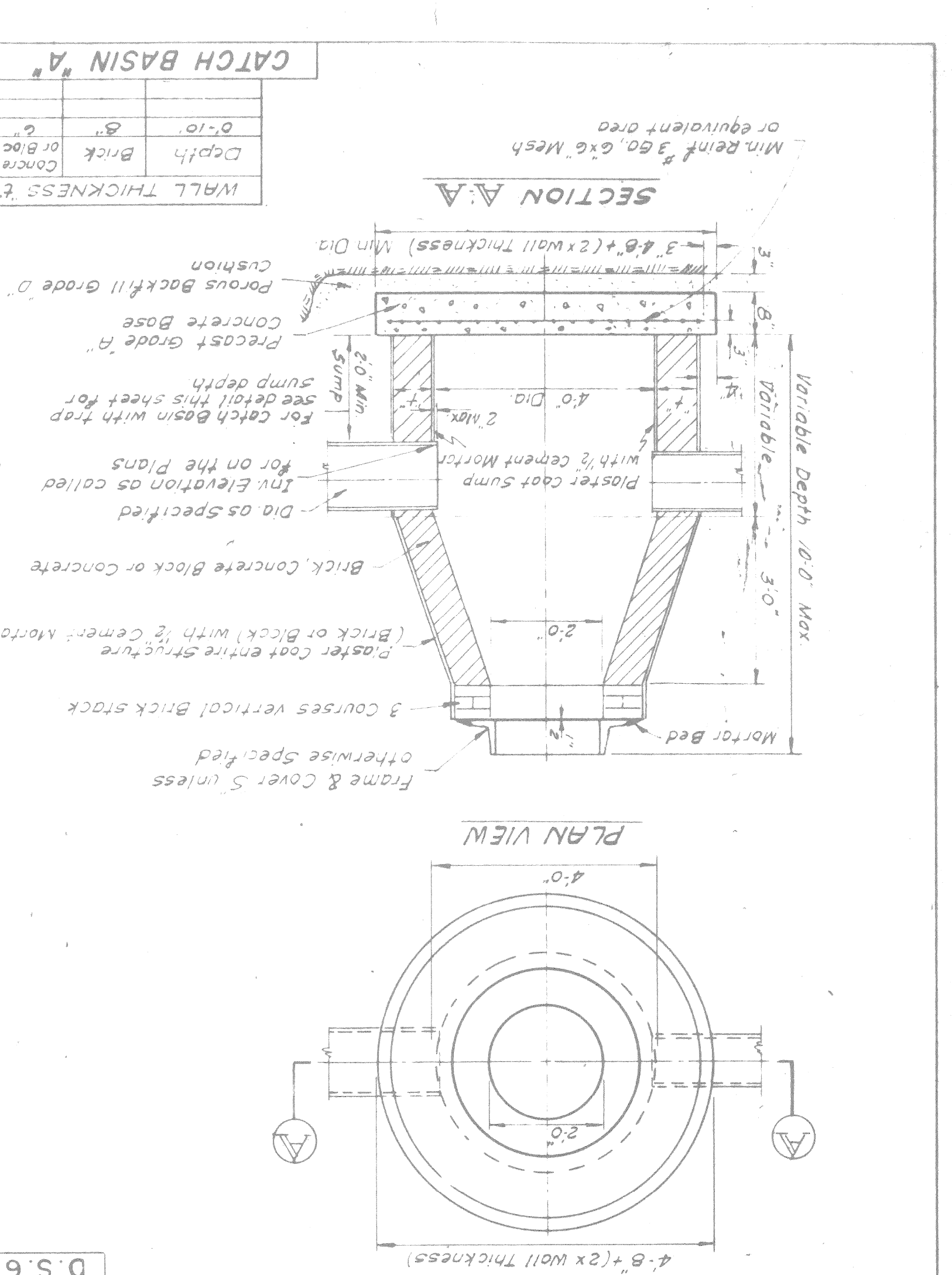
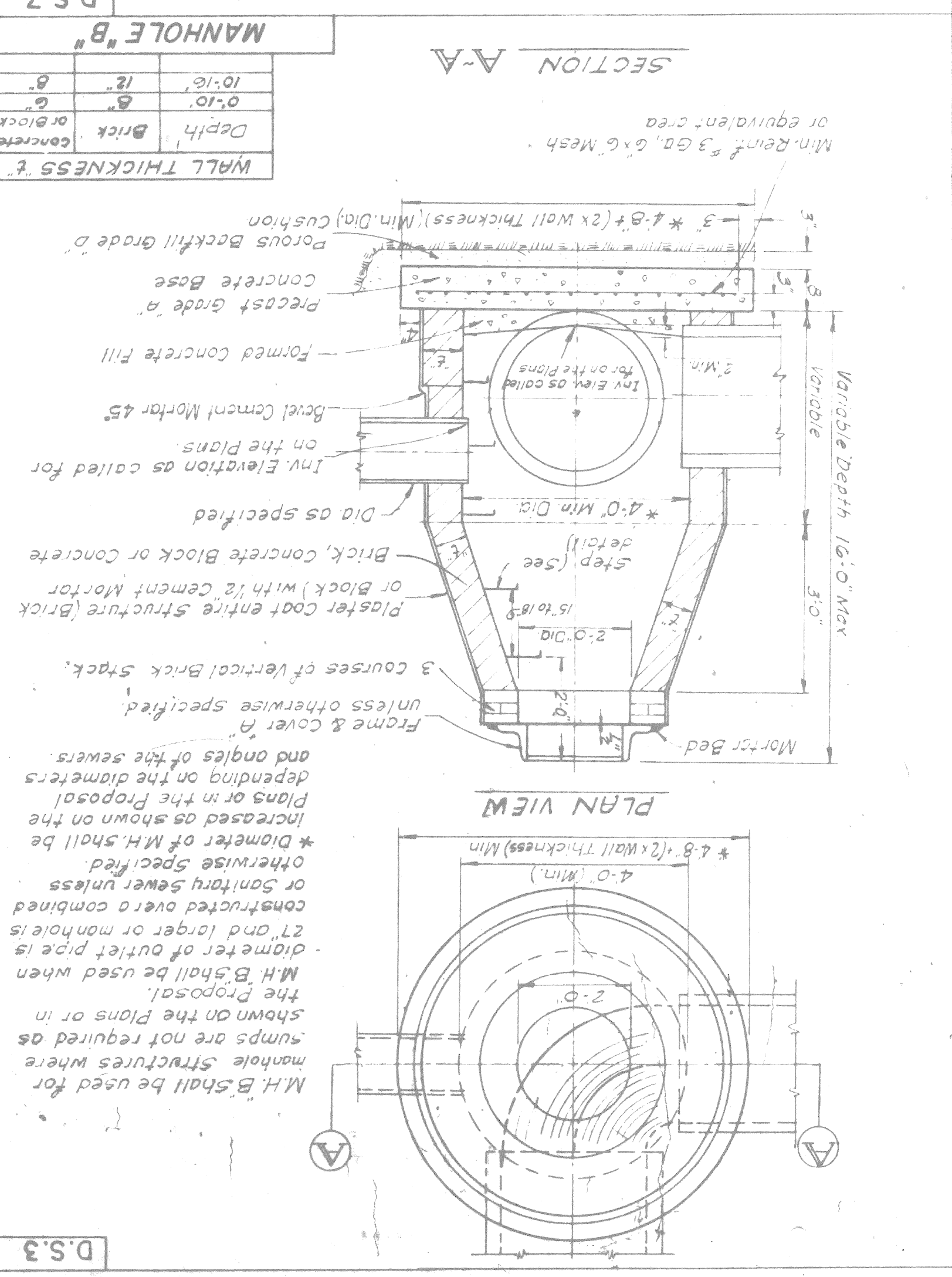
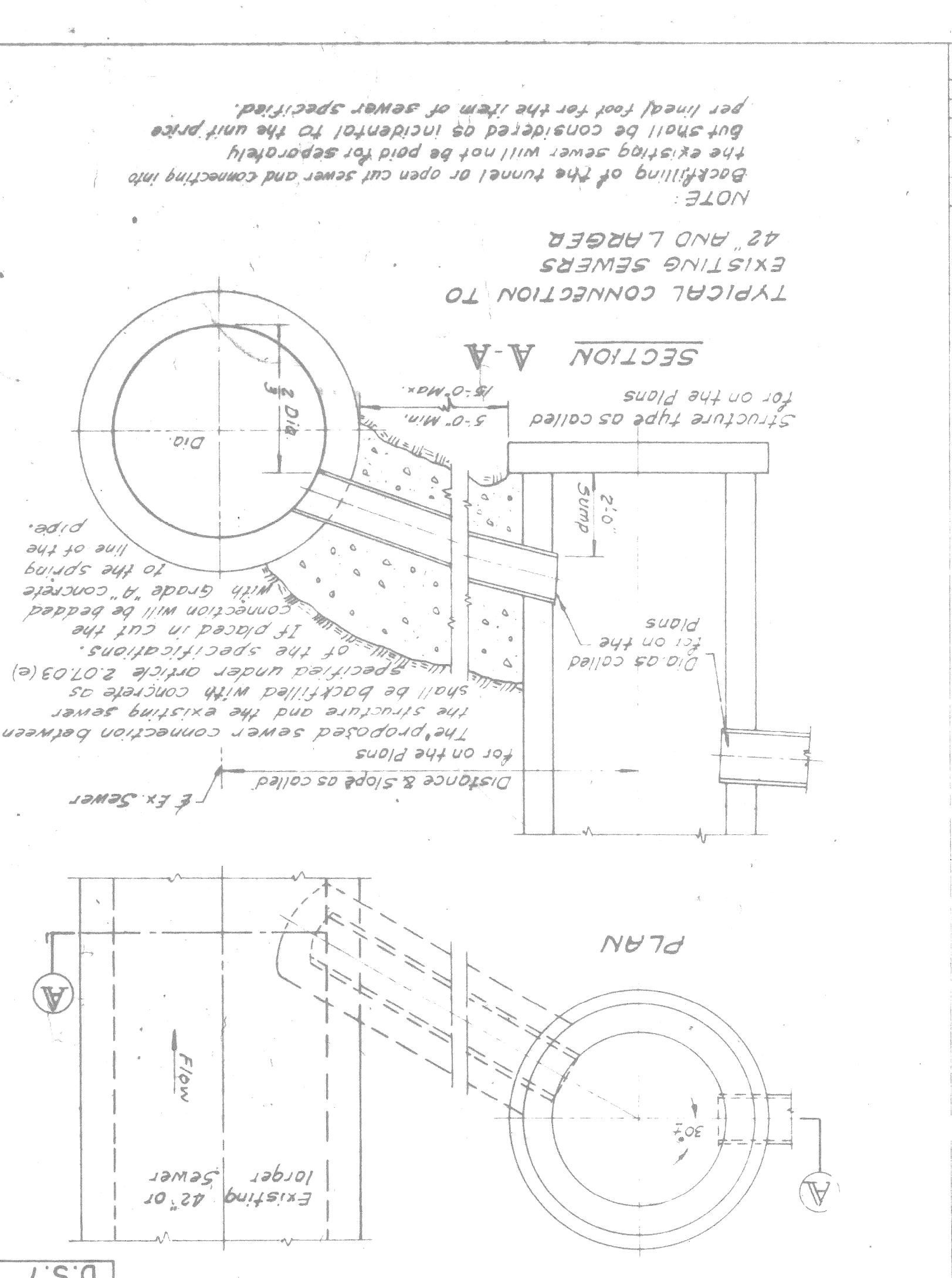
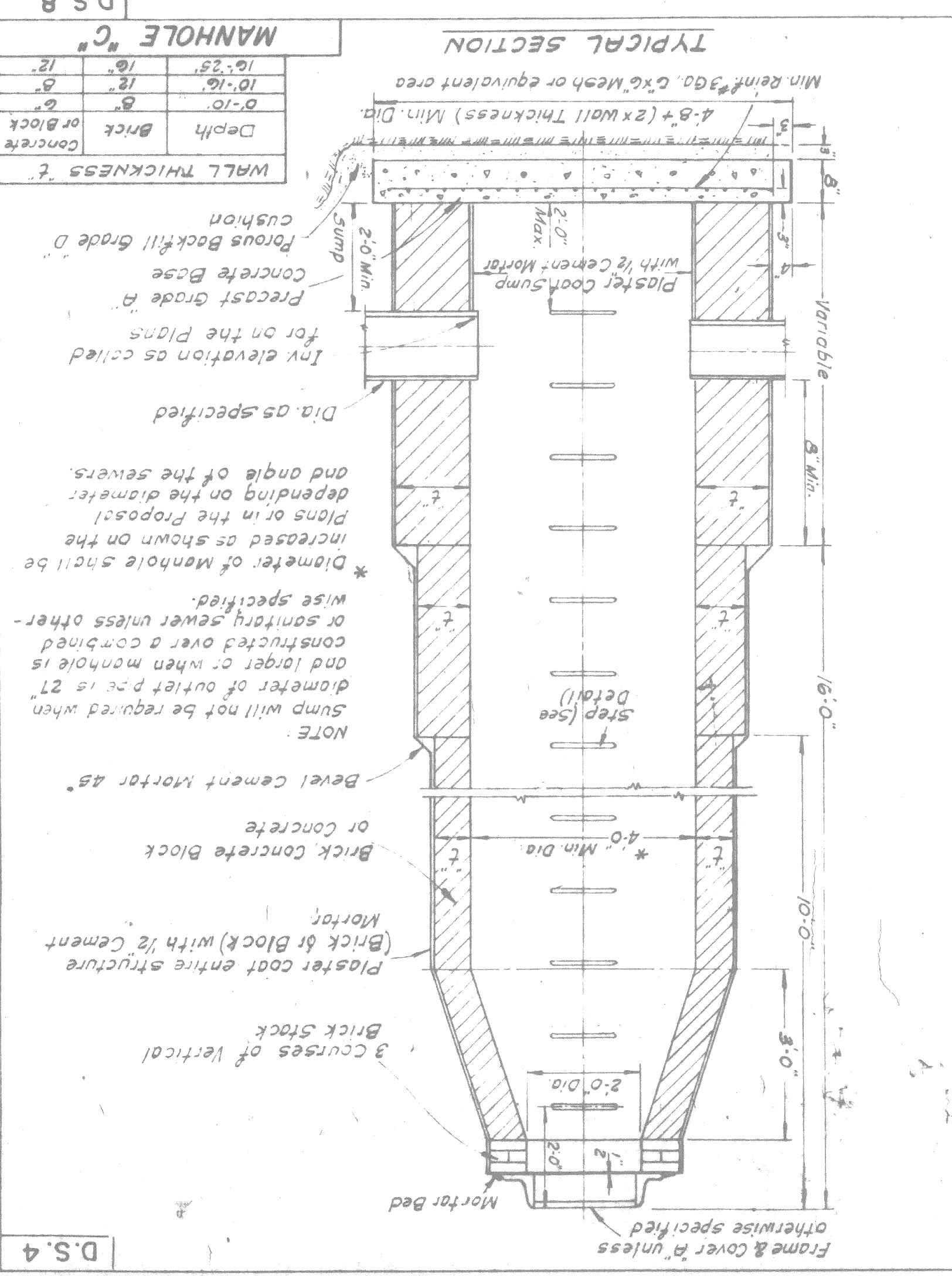
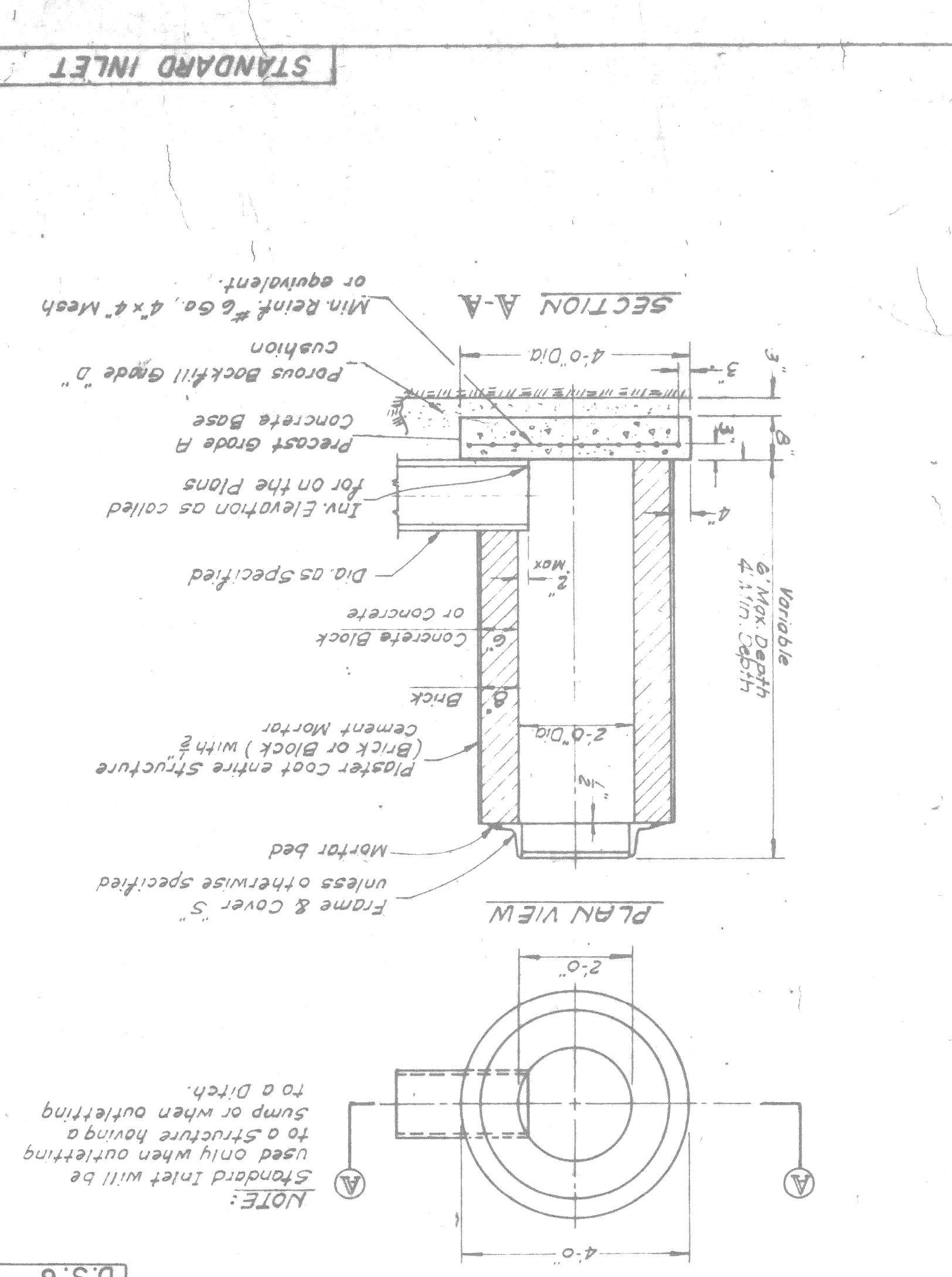
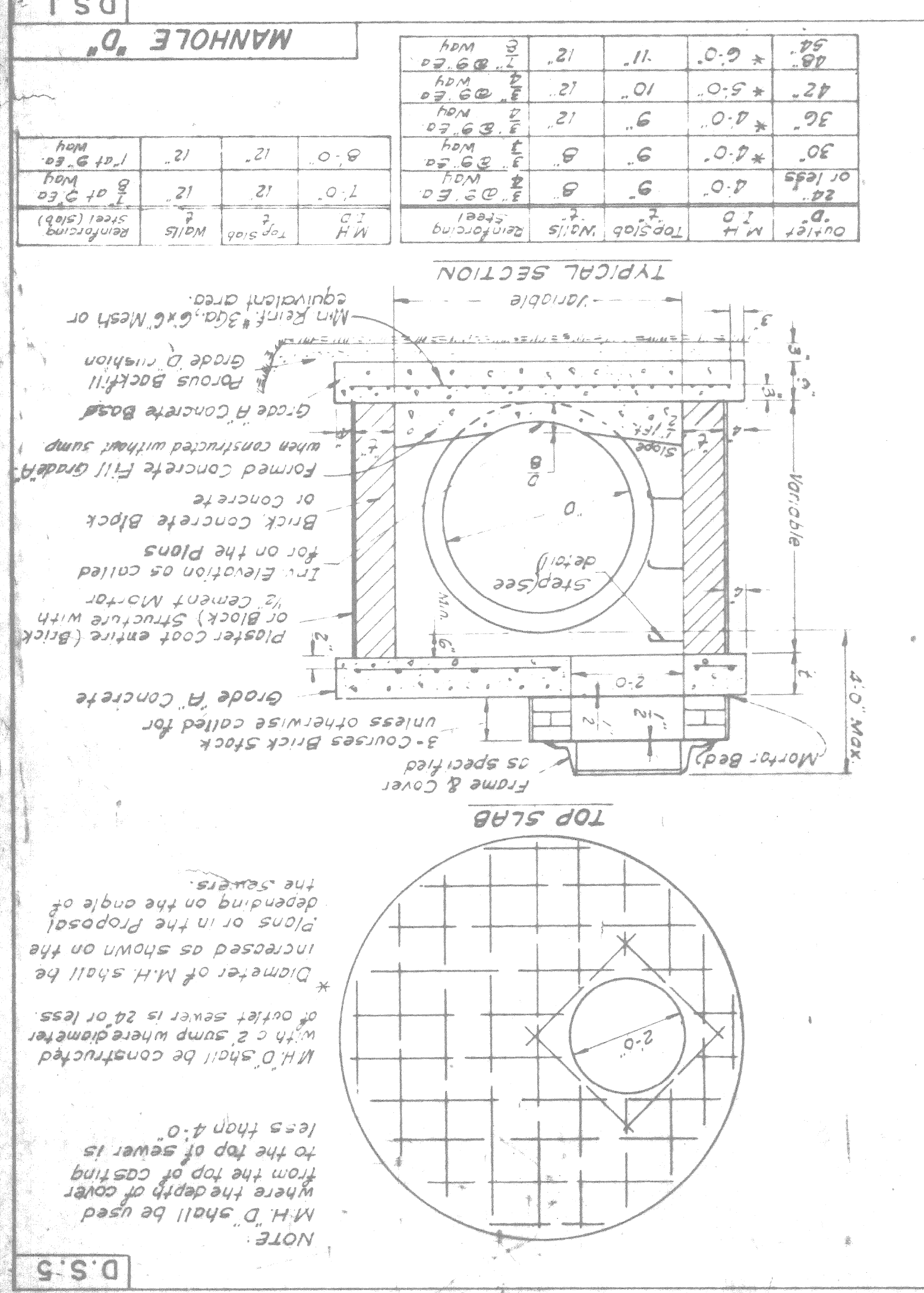
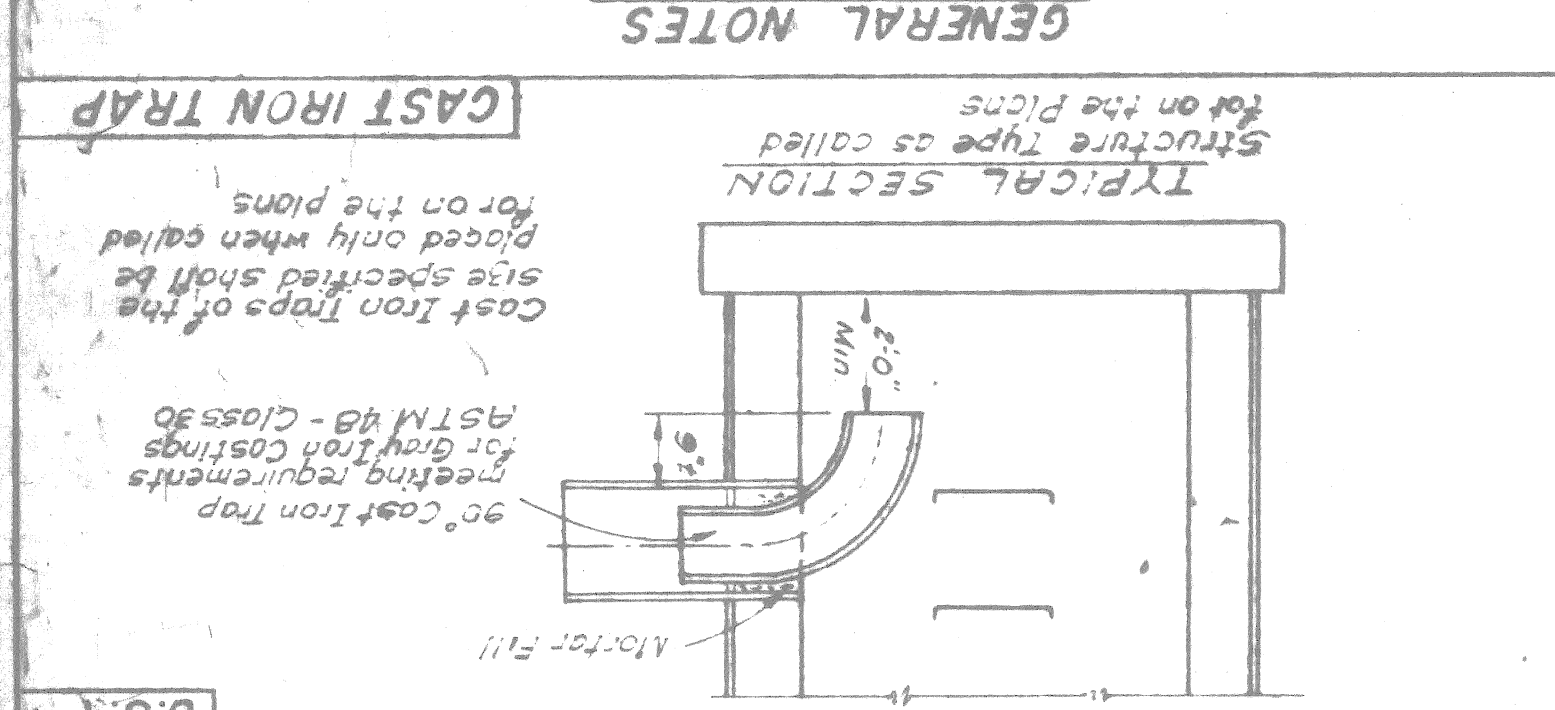
CITY OF DETROIT
 CITY OF DEARBORN



BLAND 50'
 Abandoned
 Chas. et al.

ALL MATERIALS AND WORKMANSHIP SHALL BE IN ACCORDANCE WITH THE CURRENT "GENERAL SPECIFICATIONS FOR CONSTRUCTION OF ROADS, BRIDGES AND MISCELLANEOUS CONSTRUCTION" OF THE BOARD OF WAYNE COUNTY ROAD COMMISSIONERS. CATCH BASINS AND TRAPETS, AS DETAILD, WITH PRECAST REINFORCED CONCRETE UNITS, PROVIDED THE FOLLOWING CONDITIONS ARE SATISFIED.

1. MAXIMUM DIAMETER OF SEWER OR LARGER PRECAST UNIT SHALL BE 18".
2. NO OPENINGS SHALL BE MADE IN PRECAST UNITS WHICH WOULD LEAVE LESS THAN 24" OF UNDISTURBED PRECAST PIPE OR WOULD REMOVE MORE THAN 30% OF THE CIRCUMFERENCE ALONG ANY HORIZONTAL PLANE.
3. STRUCTURES FOR SEWERS LARGER THAN 18" OR THOSE NOT MEETING THE ABOVE REQUIREMENTS SHALL BE BUILT OF BRICK OR BLOCK UP TO A MINIMUM OF 8" ABOVE THE TOP OF SEWER, WITH PRECAST UNITS BEING USED ABOVE THIS POINT, WHERE THE PRECAST UNITS REST ON THE BLOCK OR BRICK. THE JOINTS IN THE PRECAST UNITS WILL BE CUT WITH MORTAR.
4. OPENINGS FOR SEWER PIPE MAY BE CUT ON PRECAST WITH A DIAMETER OF 3 INCHES LARGER THAN THE OUTSIDE DIAMETER OF THE PIPE, OPENING AROUND OUTSIDE OF PIPES SHALL BE CUT USING BRICK MASONRY.
5. CONNECTIONS CONCERNED DURING CONSTRUCTION MAY REQUIRE THE USE OF PRECAST UNIT STRUCTURES AS DETERMINED BY THE ENGINEER.
6. SPECIAL PRECAST UNITS FOR USE ON LARGER DIAMETER SEWERS MUST HAVE THE APPROVAL OF THE ENGINEER.
7. USE OF NONLITHIC PRECAST UNITS MUST HAVE THE PRIOR APPROVAL OF THE ENGINEER.
8. ALL VERTICAL JOINTS IN CONCRETE BACK STRUCTURE WALLS SHALL BE COMPLETELY FILLED WITH MORTAR. ALL VERTICAL JOINTS SHALL BE "BUTTERED".
9. THE FIRST PIPE LENGTH EXTENDING OR LEAVING ANY STRUCTURE SHALL BE TEMPORARILY SUPPORTED BY SUITABLE MEANS UNTIL THE STRUCTURE IS COMPLETELY BACKFILLED.
10. A "POURED GRADE" WITHOUT STEEL REINFORCEMENT, MAY BE SUBSTITUTED FOR A PRECAST BASE APPROVED BY THE ENGINEER. A POROUS BACKFILL CUSHION WILL NOT BE REQUIRED UNDER THE "POURED GRADE", UNLESS THE CONTRACTOR HAS INDICATED THE REQUIRED ELEVATION, AT WHICH TIME THE ENGINEER WILL DEFINE AS TO THE METHOD OF TACKLING THE THICKNESS OF THE CONCRETE BASE ON THE USE OF A POROUS BACKFILL CUSHION.



TYPICAL CONNECTION TO EXISTING SEWERS 42" AND LARGER

NOTE:
 Backfilling of the tunnel or open cut sewer and connecting into the existing sewer will not be paid for separately but shall be considered as incidental to the unit price per lineal foot for the item of sewer specified.

SECTION A-A

PLAN

SECTION A-A

PLAN

WAYNE COUNTY ROAD COMMISSIONERS
 BOARD OF
 DESIGN DIVISION
 DETROIT MICHIGAN
 DATE 12-1-72
 DRAWN BY
 CHECKED BY
 A.E.S.
 REVISIONS
 NO SCALE
 PRIMARY ROAD
 STANDARDS

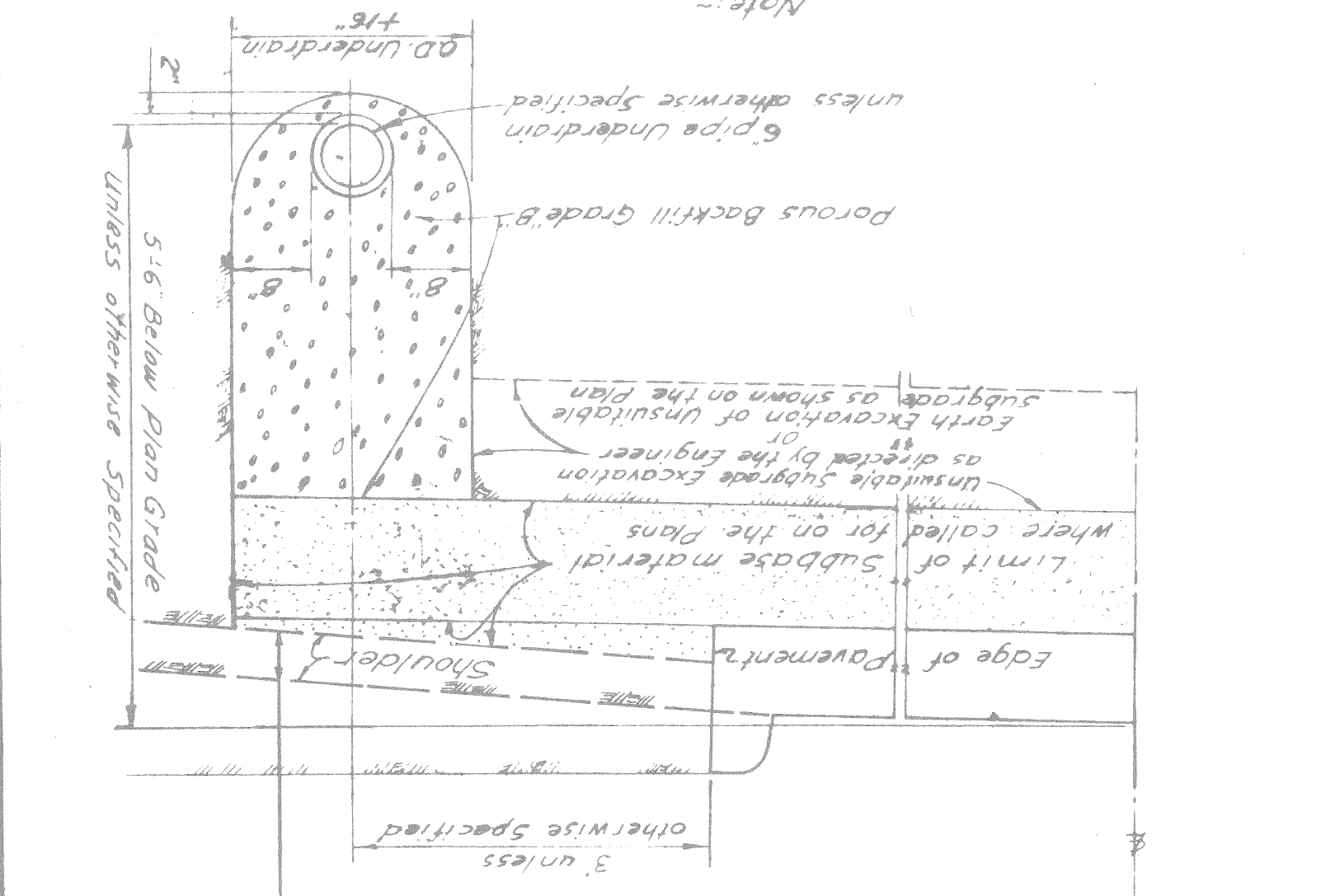
PIPE UNDERDRAIN

Replacement of Underdrain backfill in areas of unsuitable subgrade excavation is incidental to the backfill of backfill. When porous material is used it will be allowed over the underdrain trench.

Unsuitable subgrade excavation will not include the area of the pipe underdrain trench.

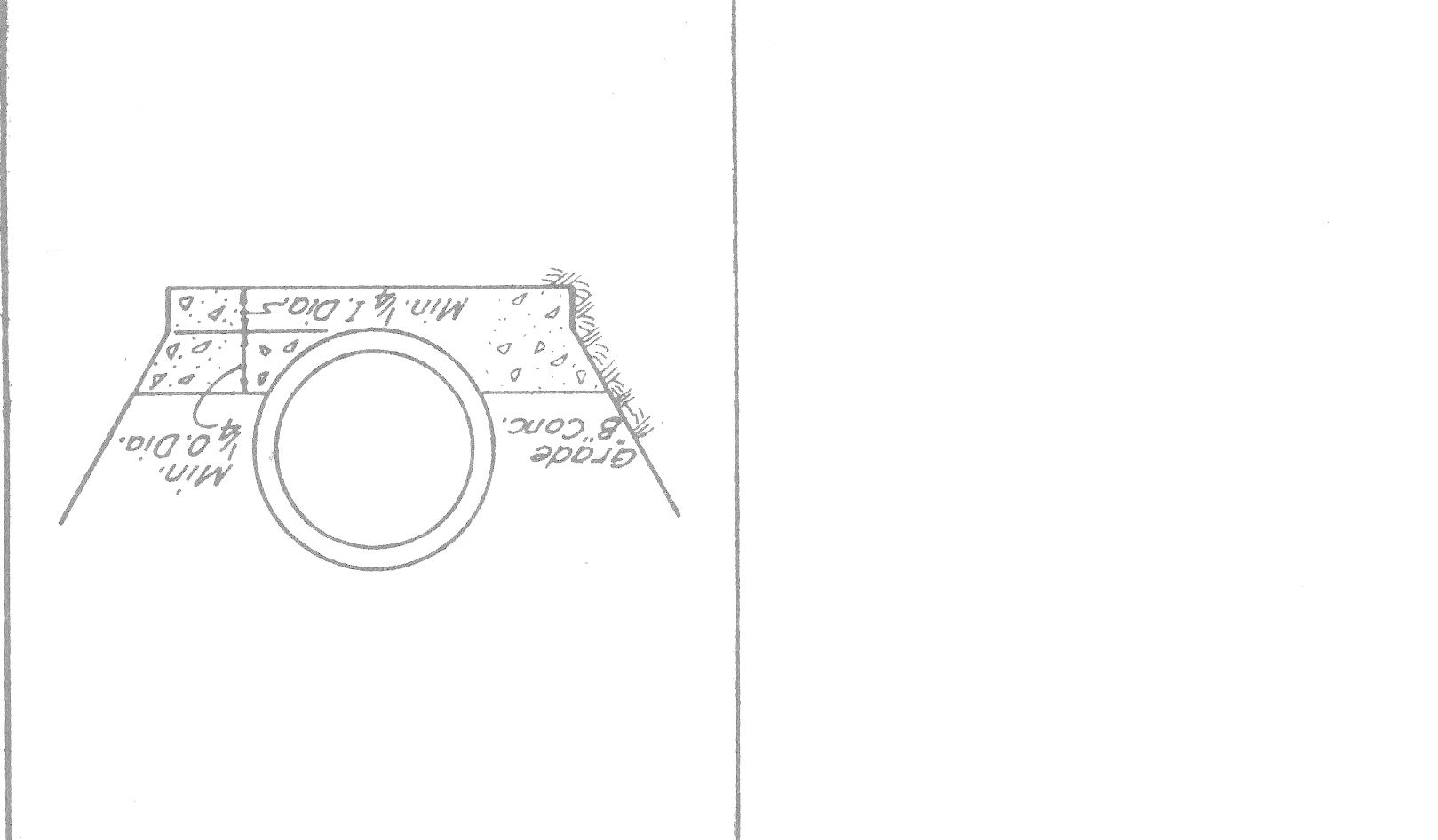
Method to 95% of maximum unit weight and compacted by the "controlled density" method. Porous backfill grade "B" shall be placed.

Note: 6" pipe underdrain unless otherwise specified.

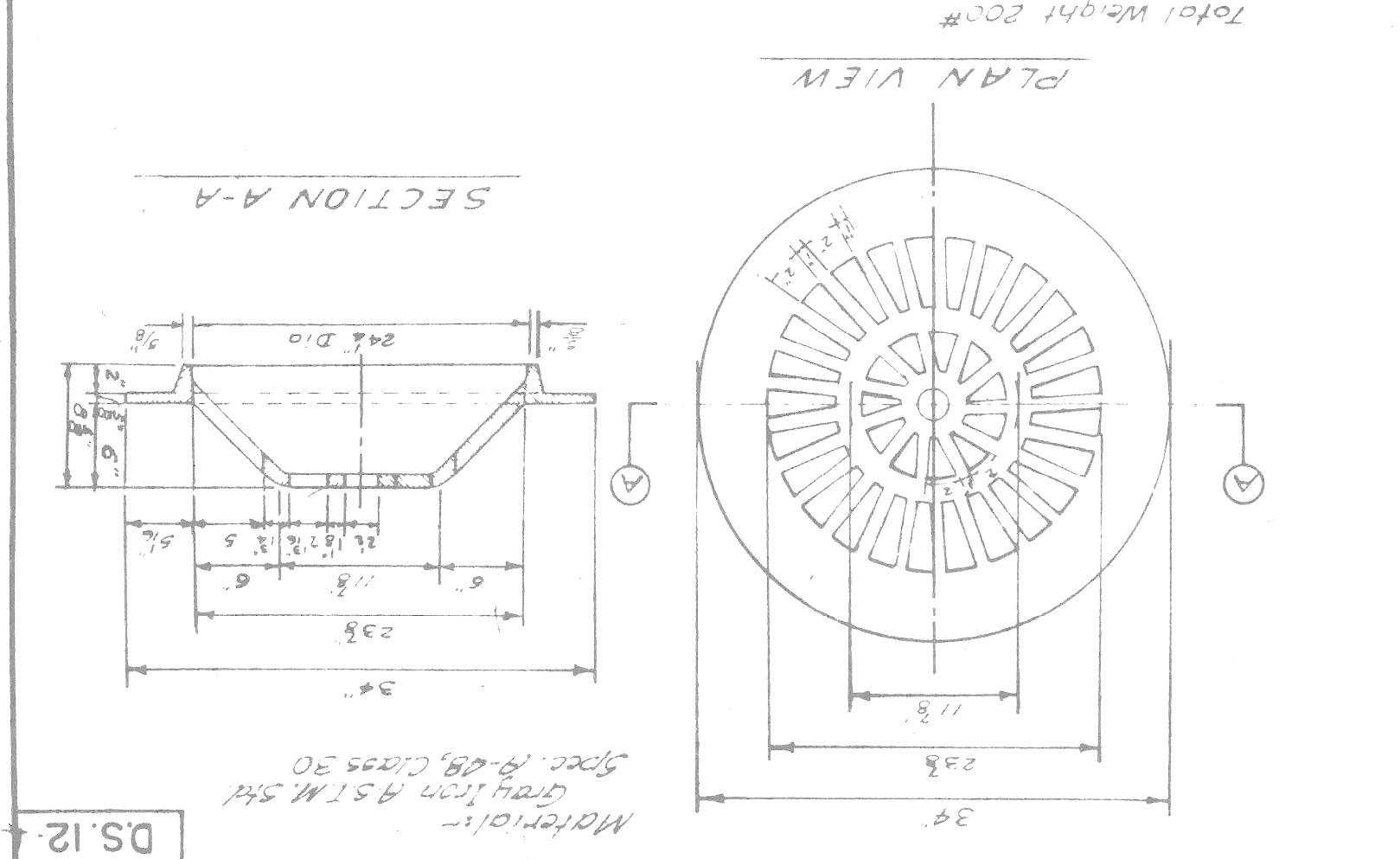


DS.16 CONCRETE CRADLE

Material: Gray Iron, A.S.T.M. Std. Spec. 101, Class 30. Spec. 101, Class 30. Total weight 200#



COVER "C"



DS.12

MANHOLES OVER 10 FEET DEEP

STEPS ARE REQUIRED FOR ALL PLASTIC COATED STEEL STEPS (as approved)

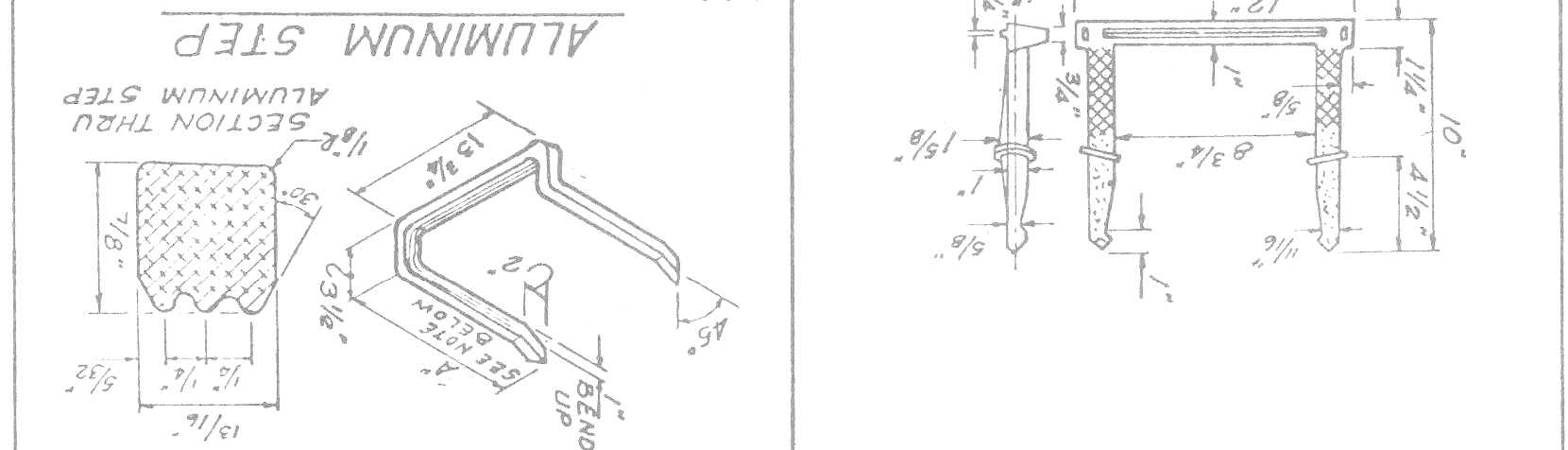
NOTE: THIS STEP FOR USE IN PRECAST STRUCTURES ONLY.

1. MANHOLE STEPS SHALL CONFORM TO THE ATTACHED BARS, ROSS, SHIMS AND TUBES. REQUIREMENTS FOR ALUMINUM ALLOY.

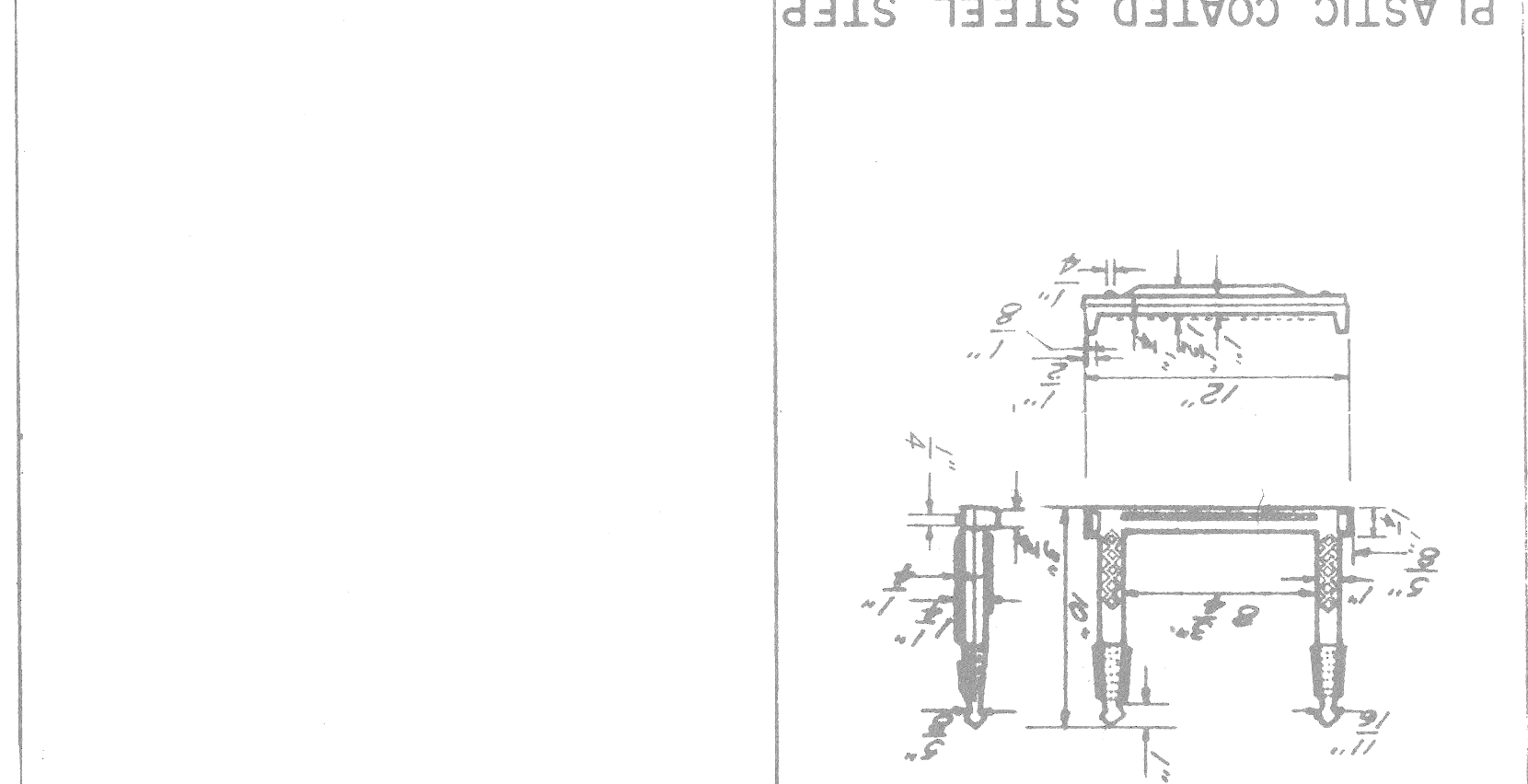
2. DIMENSION "A" SHALL BE 11" FOR USE WITH 1/2" FOR USE WITH BRICK OR BLOCK.

3. HOLD CONFIGURATIONS WILL BE CONSIDERED FOR APPROVAL.

4. STEPS SHALL PROJECT 5/8" OUT FROM INSIDE FACE OF STRUCTURE WALL.

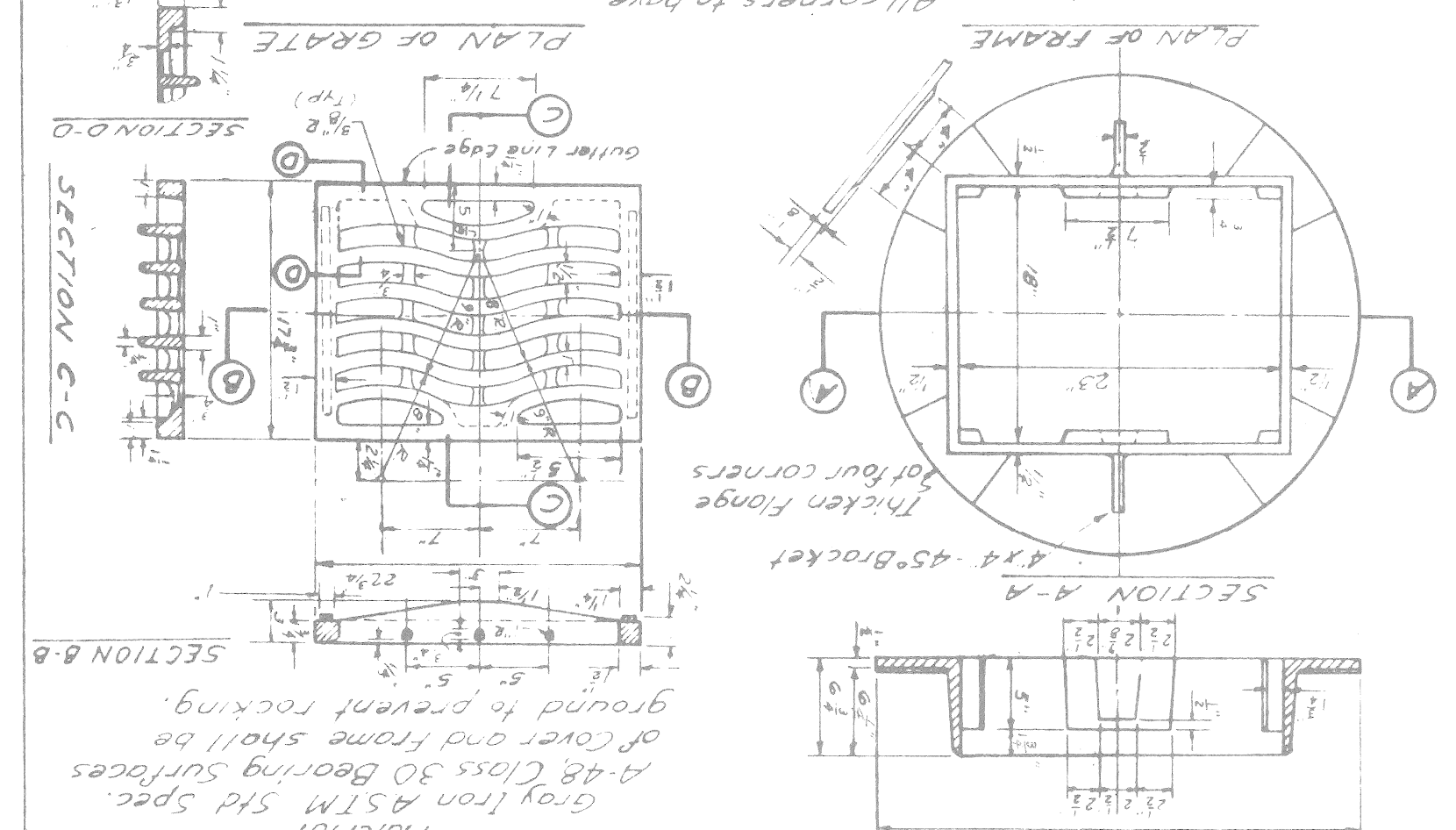


ALUMINUM STEP

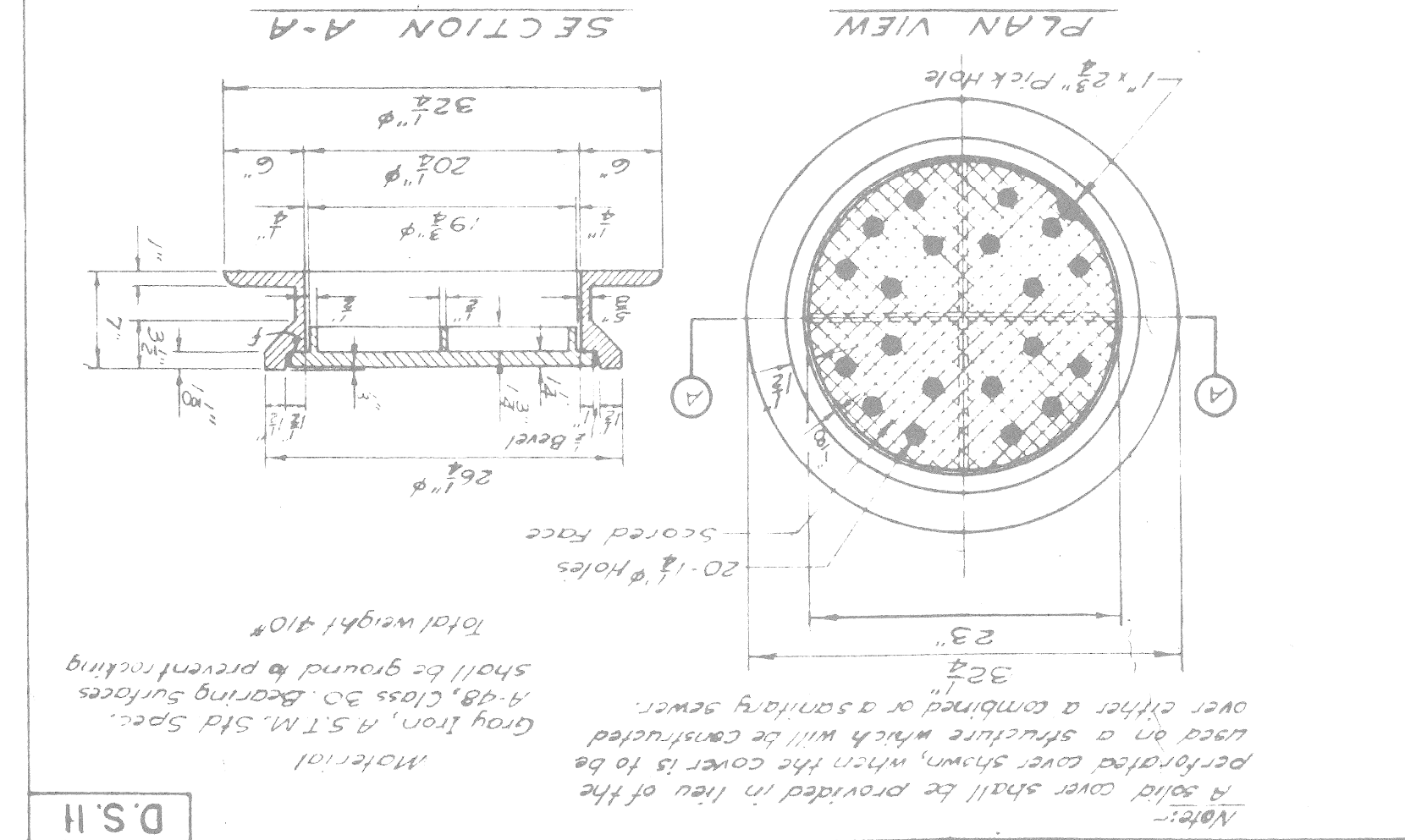


DS.15

FRAME & GRATE "S"



FRAME & COVER "A"

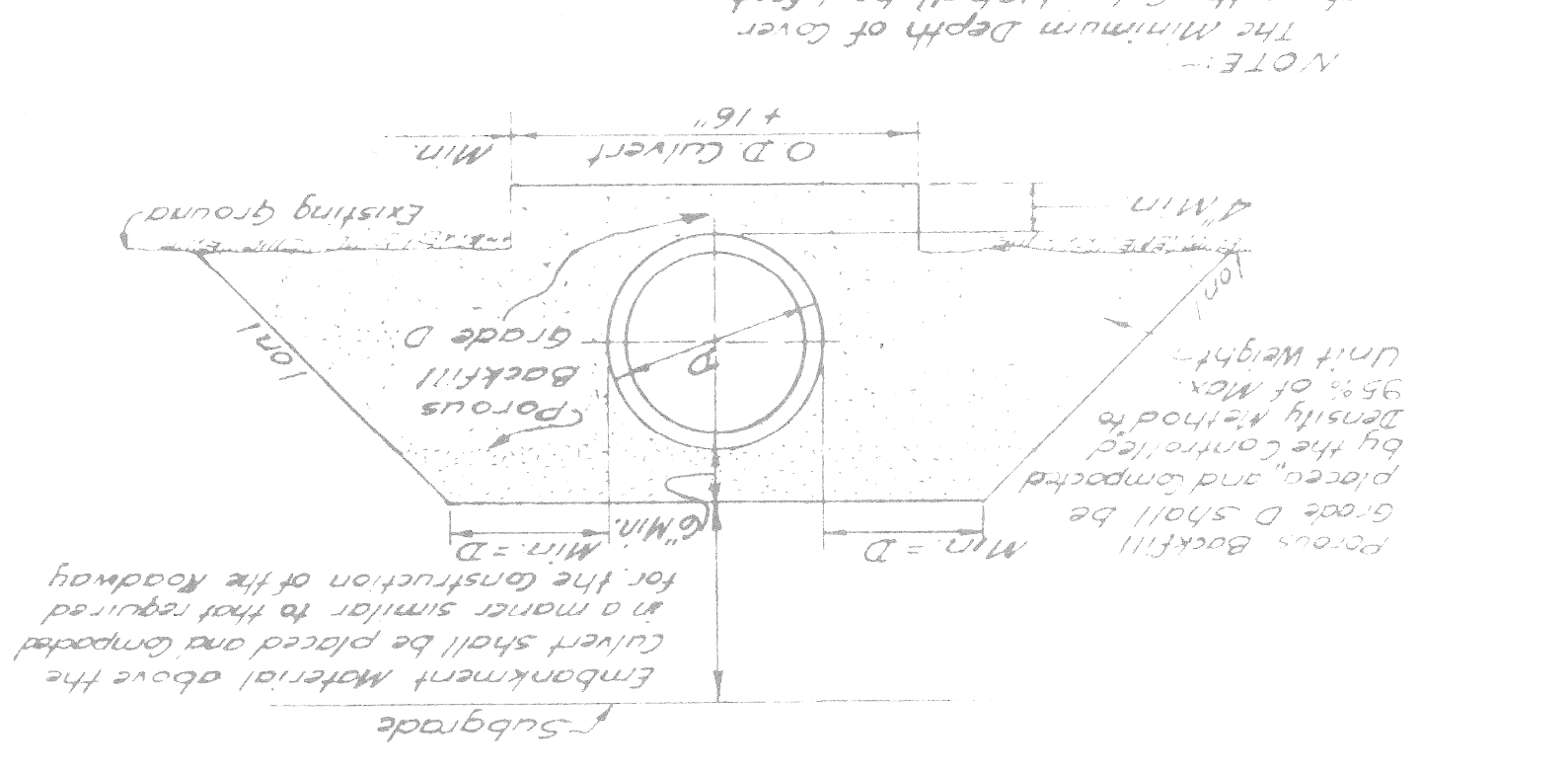


DS.11

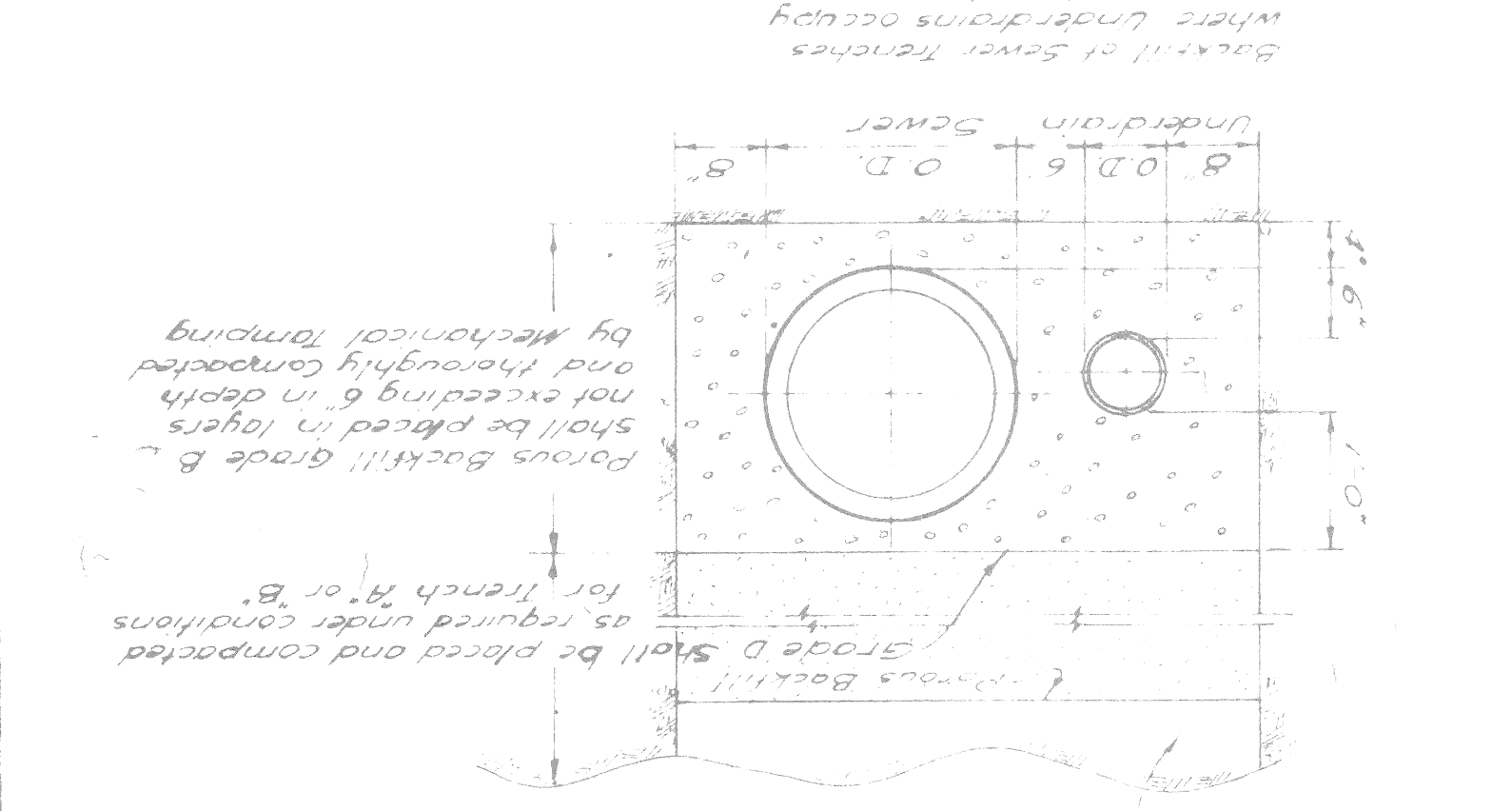
CULVERT INSTALLATION

NOTE: The minimum depth of cover above the culvert shall be 1 foot.

During construction the contractor shall not operate any heavy equipment inside or on top of existing ground and is to be used where the embankment over top of existing ground is to be used.

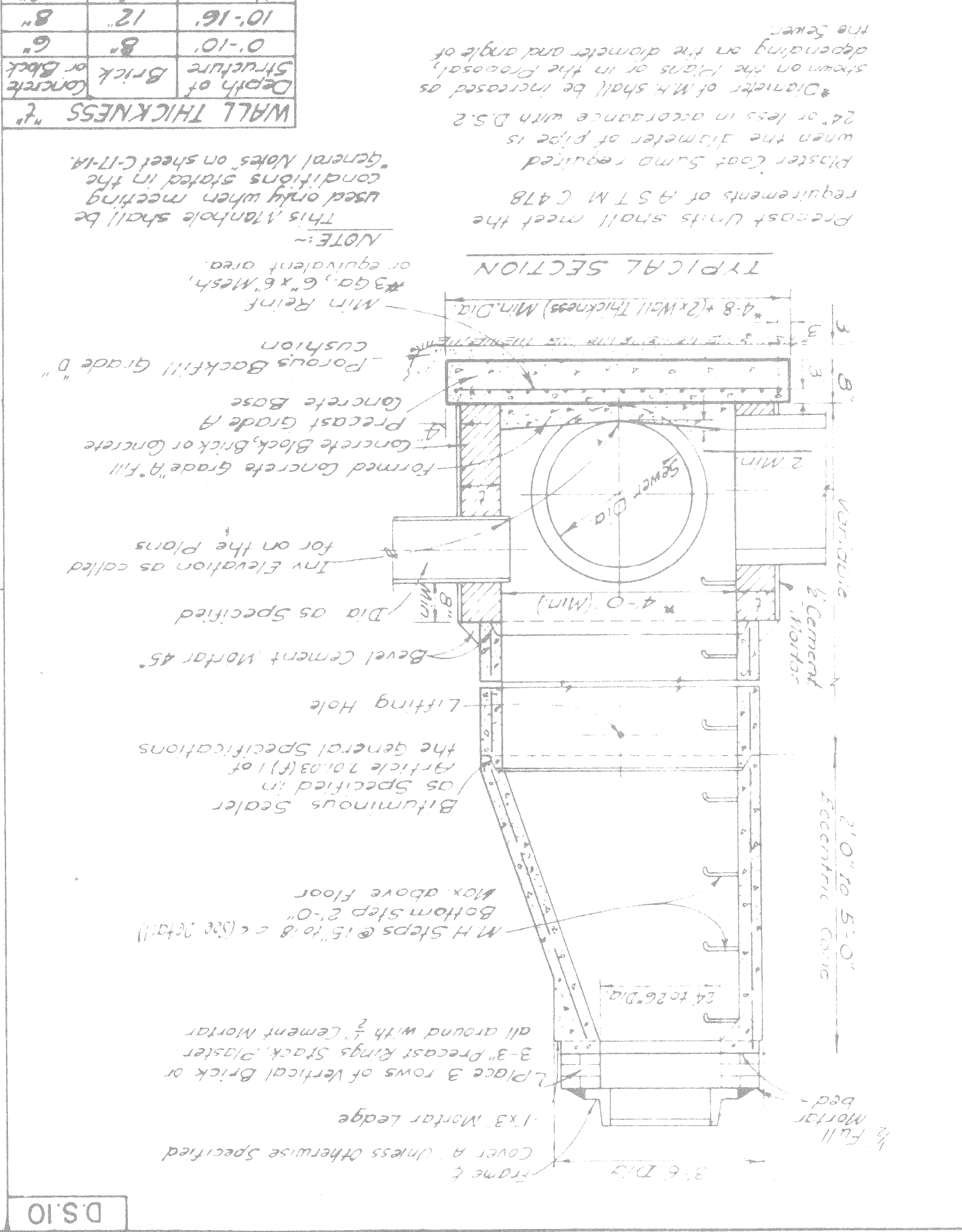


SEWER TRENCH "C"



DS.14

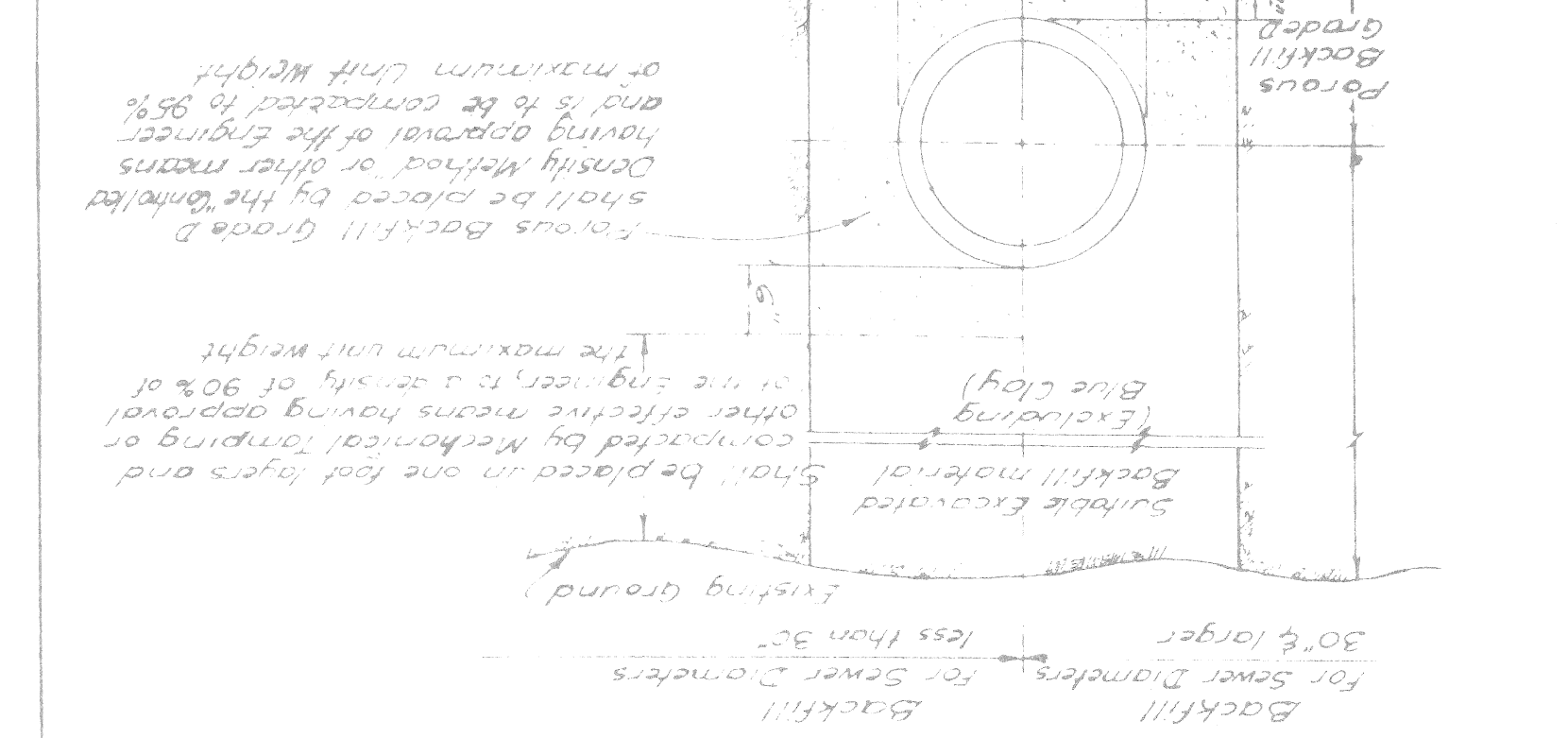
PRECAST MANHOLE "B"



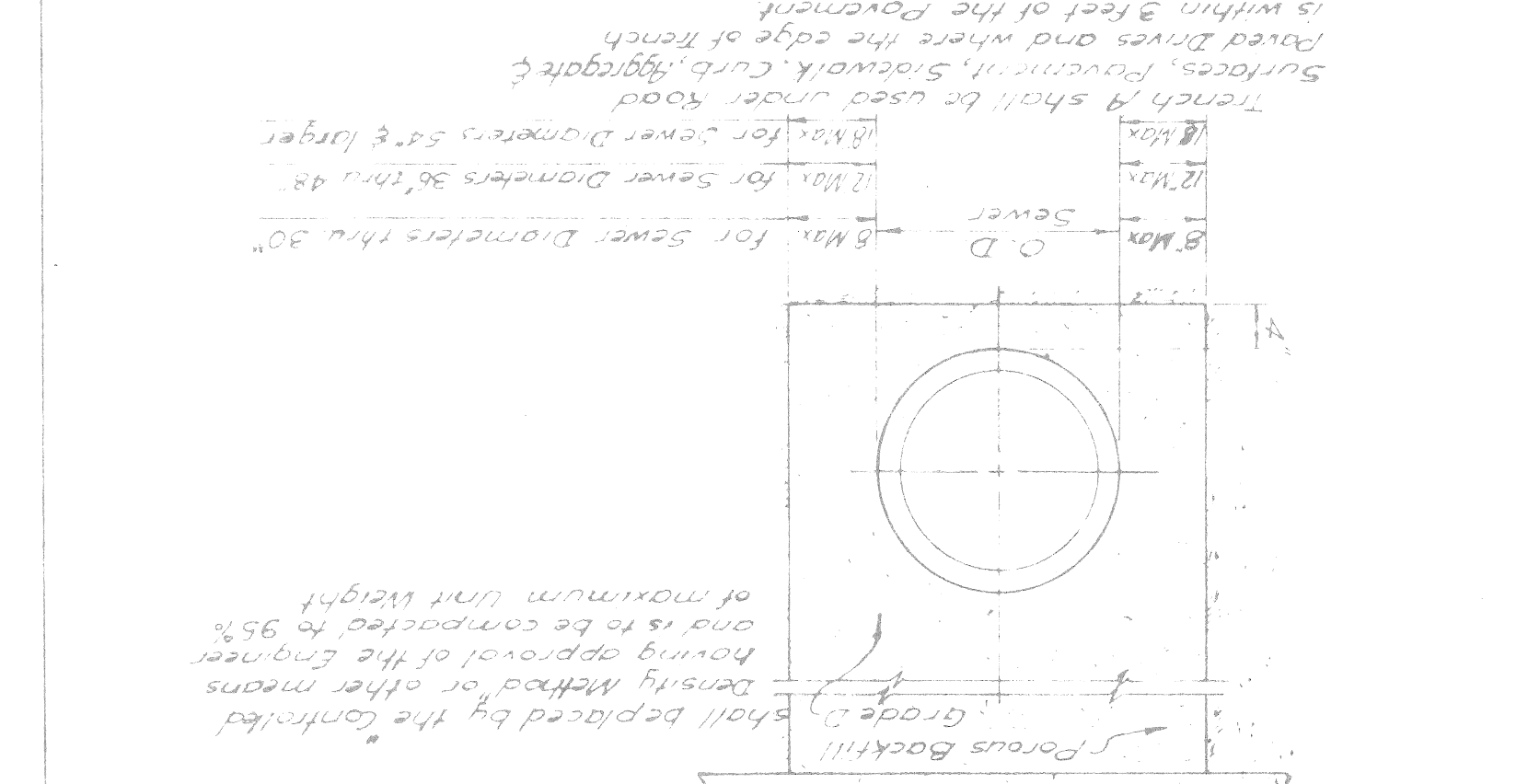
DS.10

SEWER TRENCH "B"

NOTE: Trench shall be used under conditions other than specified for trench "A".

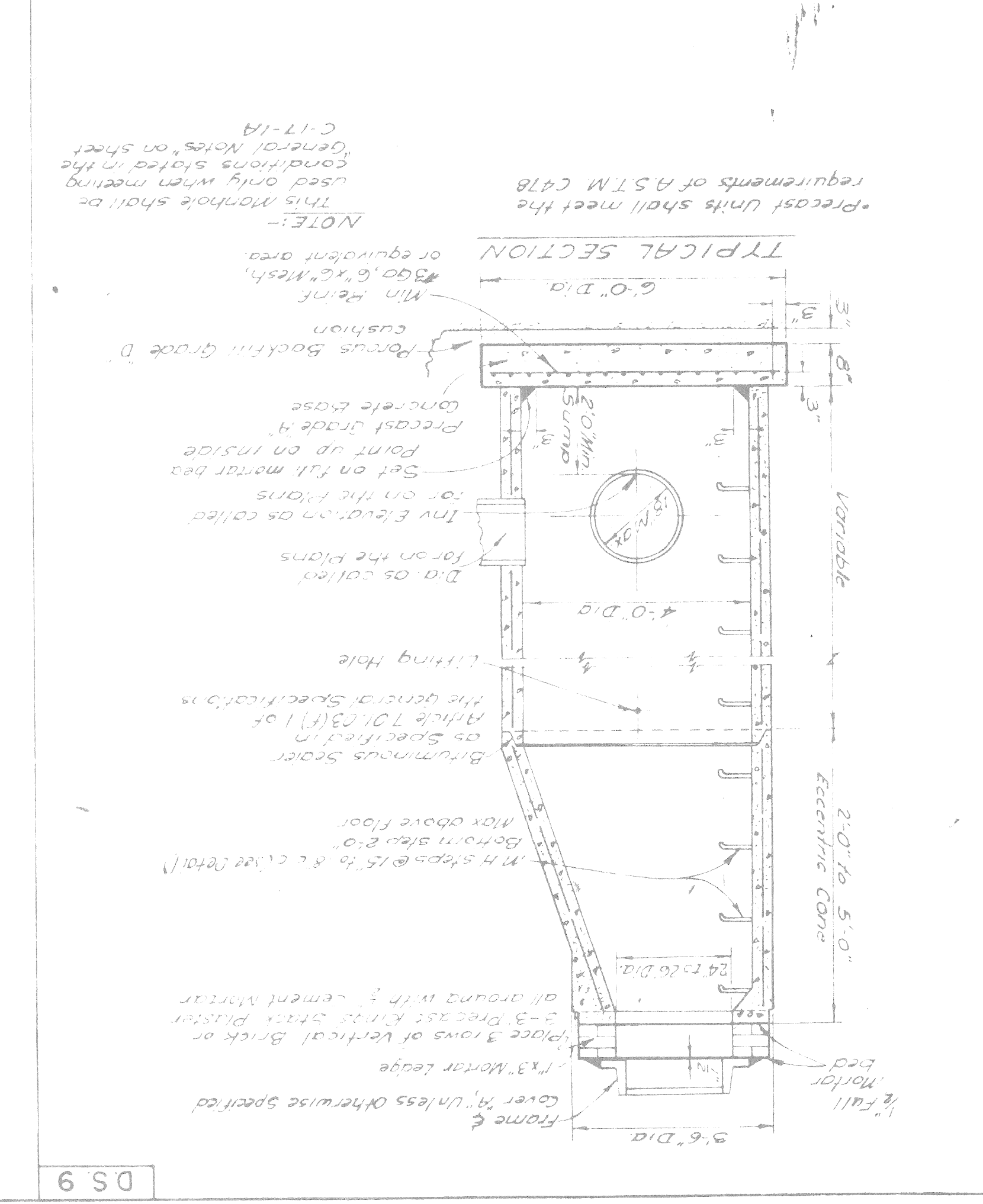


SEWER TRENCH "A"



DS.13

PRECAST MANHOLE "A"



DS.9

