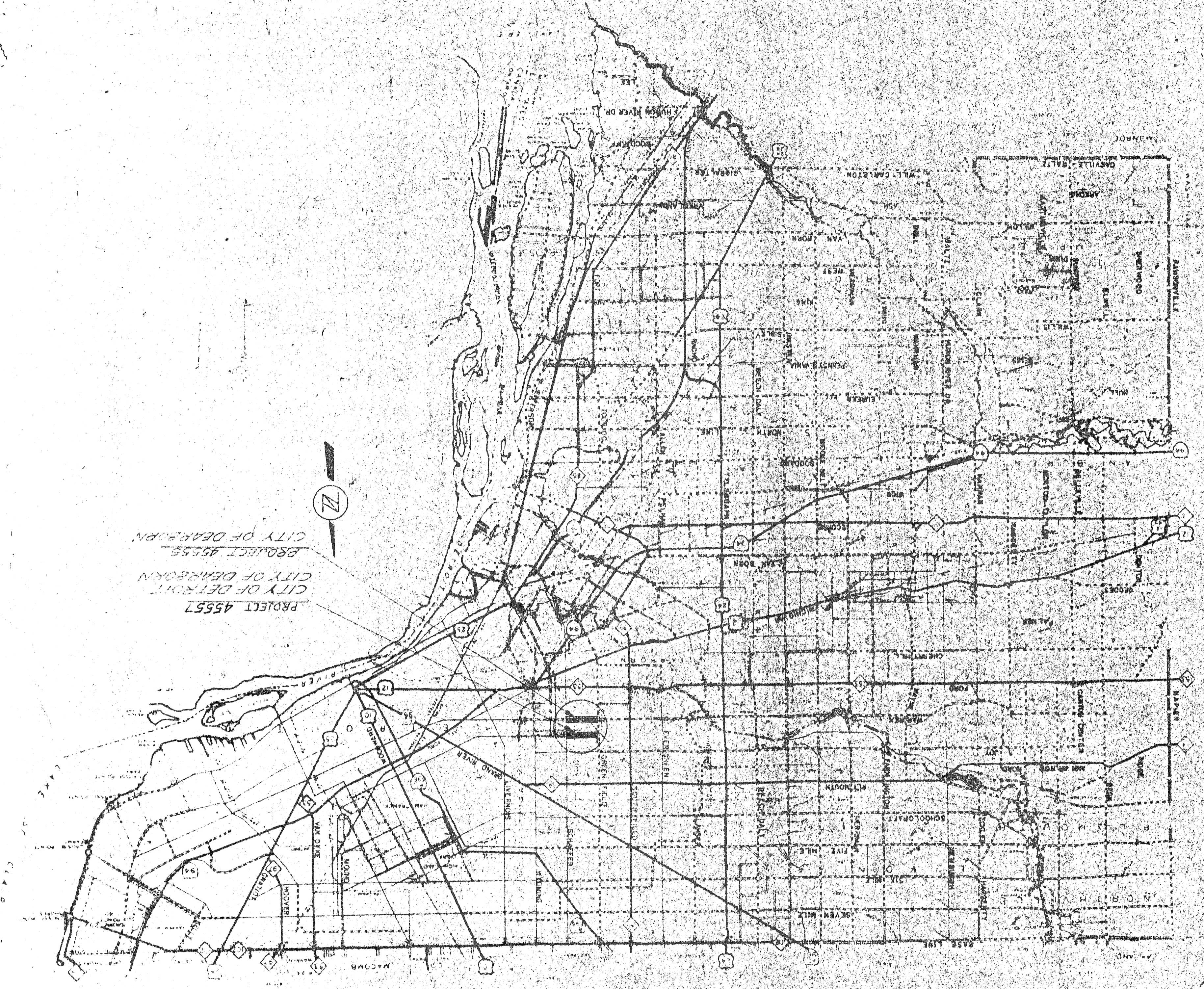


TIREMAN - GREENFIELD TO SCHAEFER

BOARD OF WAYNE COUNTY ROAD COMMISSIONERS  
DETROIT, MICHIGAN

FREDDIE G. BURTON CHAIRMAN  
MICHAEL BERRY VICE CHAIRMAN  
JOSEPH M. HENSON COMMISSIONER

RESURFACING PROJECTS



PROJECT 45557  
CITY OF DETROIT  
PROJECT 45555  
CITY OF DETROIT  
PROJECT 45556  
CITY OF DETROIT

- 1 - TITLE SHEET
- PROJECT 45555 WARREN ROAD TO GREENFIELD ROAD
- 2 - TYPICAL CROSS SECTION
- 3-4 - PLAN
- PROJECT 45557 TIREMAN AVENUE TO GREENFIELD ROAD
- 5 - TYPICAL CROSS SECTION
- GREENFIELD ROAD TO SCHAEFER ROAD
- 6-10 - PLAN
- 11 - ASPHALTIC CONCRETE RESURFACING DETAILS

- STANDARD PLANS
- C-17-1A5
- C-17-1B3
- C-17-1D5
- C-17-1E4
- C-17-1F3
- C-17-1G4
- C-17-1J2

APPROVED: *M. J. [Signature]* CHIEF ENGINEER DESIGN DIVISION  
 APPROVED: *[Signature]* COUNTY HIGHWAY ENGINEER  
 PREPARED UNDER SUPERVISION OF *[Signature]* REGISTERED PROFESSIONAL ENGINEER

RES. NO. 5509

FILE F-8-4 SHEET NO. 1

1976 PROJECT

# ASPHALTIC CONCRETE RESURFACING DETAILS

NOT TO SCALE

APPROVED: \_\_\_\_\_  
 CORRECT: \_\_\_\_\_

ASPHALTIC CONCRETE USED TO CONSTRUCT EXISTING A.C. OR CONCRETE DRIVE CONNECTIONS WILL NOT BE PAID FOR SEPARATELY BUT WILL BE PAID FOR AT THE CONTRACT UNIT PRICE PER TON OF ASPHALTIC CONCRETE WEARING COURSE OR UNDER COURSE OF THE MIXTURE DESIGNATION PLACED.

ALIGNMENT SHALL BE MAINTAINED WHERE THERE ARE NO CURBS AND SHALL NOT VARY MORE THAN 1" FROM A LINE APPROVED BY THE ENGINEER. THE CONTRACTOR SHALL FURNISH MATERIALS AND LABOR TO SET A STAKING TO CONTROL THE ALIGNMENT.

TRANSIT MIX CONCRETE MAY BE USED.

OPERATIONS TO OTHER UTILITIES AND STRUCTURES, AND SHALL BE LIABLE FOR ALL DAMAGES CAUSED BY HIS THEIR FACILITIES PRIOR TO STARTING ANY WORK OF EXCAVATION. CONTRACTOR SHALL CONTACT THE UTILITY OWNERS REGARDING LOCATION OF UTILITIES ARE NOT SHOWN ON THE PLANS. THE UNDERGROUND UTILITIES MAY EXIST WHERE THE VARIATIONS FROM THE LOCATIONS SHOWN.

THE BOARD OF WAYNE COUNTY ROAD COMMISSIONERS WILL NOT BE RESPONSIBLE FOR ANY OMISSIONS OR VARIATIONS FROM THE LOCATIONS SHOWN.

THESE PLANS IS TAKEN FROM THE BEST AVAILABLE DATA. THE BOARD OF WAYNE COUNTY ROAD COMMISSIONERS WILL NOT BE RESPONSIBLE FOR ANY OMISSIONS OR VARIATIONS FROM THE LOCATIONS SHOWN.

ON PROJECTS WITHOUT CURB WHERE A WIDENING IS NOT PROPOSED EXCESS SHOULDER MATERIAL SHALL BE EXCAVATED TO LEVEL WITH OR BELOW THE EXISTING SURFACE (INCIDENTAL) ASPHALTIC CONCRETE ON UNDISTURBED SHOULDER TO A SUFFICIENT WIDTH, AS DIRECTED BY THE ENGINEER, TO PROVIDE A STABLE BASE AND BACK-UP AT THE EDGE OF PAVEMENT FOR THE PLACING OF PROPOSED BINDER AND WEARING COURSES.

THE PREPARATION OF EXISTING AGGREGATE INTERSECTIONS AND DRIVEWAYS SHALL BE INCIDENTAL TO THE PLACING OF ASPHALTIC CONCRETE WEARING COURSE, 31A.

MAIL BOXES IN THE WAY OF SHOULDER CONSTRUCTION, SHALL BE REMOVED AND RELOCATED AS DIRECTED BY THE ENGINEER. THIS WORK SHALL BE INCIDENTAL TO PLACING AGGREGATE SHOULDERS.

THE ADJUSTMENT AND RECONSTRUCTION OF UTILITY STRUCTURES NOT INDICATED ON THE PLANS WILL BE PERFORMED BY THE UTILITY OWNERS.

ANY EXISTING CASTINGS DAMAGED BY THE CONTRACTOR IN THE COURSE OF WORK SHALL BE REPLACED BY THE CONTRACTOR AT HIS OWN EXPENSE.

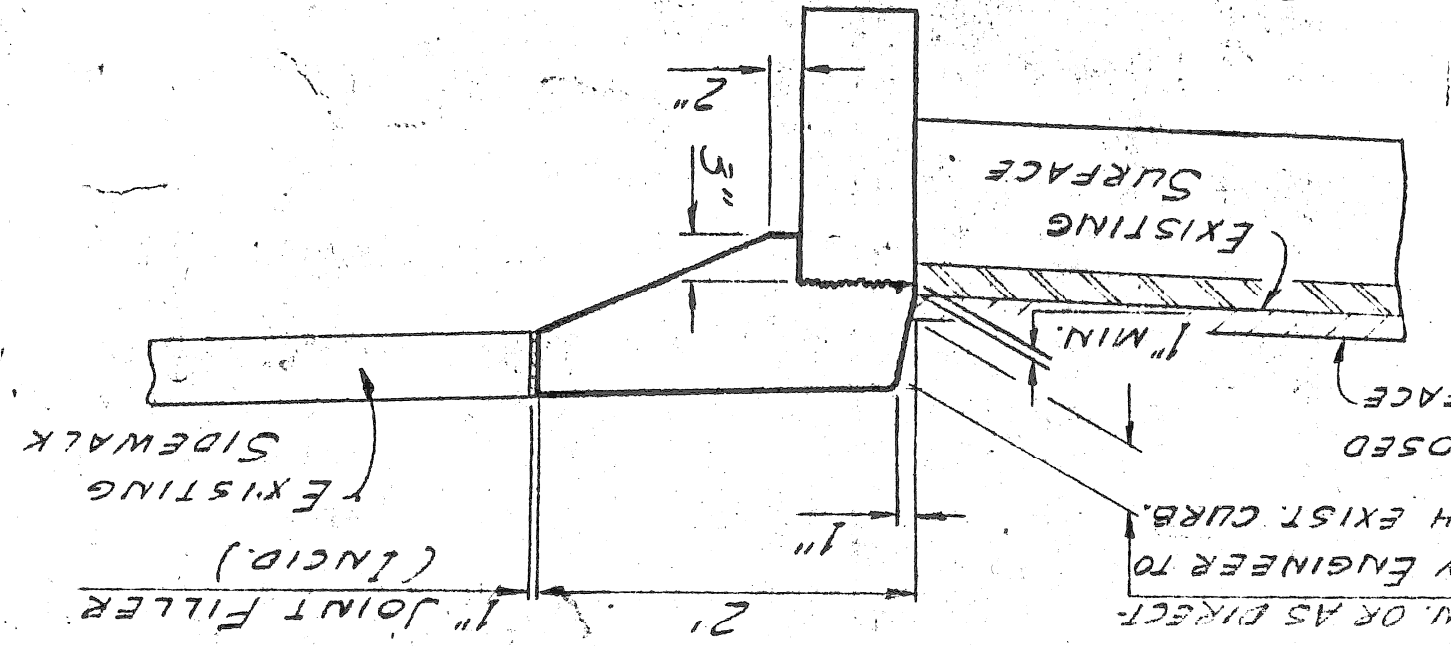
STREET SIGNS AND TRAFFIC SIGNS IN THE WAY OF CONSTRUCTION SHALL BE REMOVED, TEMPORARILY SET AND FINALLY RESET BY THE CONTRACTOR AS DIRECTED BY THE ENGINEER. INCIDENTAL TO THE PROJECT.

## GENERAL NOTES

YIELD FACTORS  
 (BASED ON 1" THICKNESS PER SQUARE YARD)

MIXTURE	NATURAL STONE	SLAG
ASPHALTIC CONCRETE	(LBS.)	(LBS.)
9A BINDER	114.0	104.0
25A BINDER	107.0	105.0
25A WEARING	107.0	105.0
31A WEARING	108.0	102.5
BITUMINOUS BOND COAT (SS1H)		
0.10 GAL/SQ. YD. ON EXISTING SURFACE		
0.05 GAL/SQ. YD. ON PREVIOUSLY PLACED SURFACE		

## INTEGRAL CONCRETE CURB AND WALK (PATCHING)



REMOVE EXISTING CURB TO A MINIMUM OF 1" BELOW EXISTING PAVEMENT SURFACE. IF AN EXISTING LONGITUDINAL SIDEWALK JOINT IS MORE THAN 3/16" FROM THE CURB FACE THE SIDEWALK SHALL BE SAWED FOR THE INTEGRAL CONC. CURB & WALK SECTION. IF AN EXISTING LONGITUDINAL SIDEWALK JOINT IS CLOSER THAN 3/16" FROM THE CURB FACE THE SIDEWALK SHALL BE REMOVED AND REPLACED OUTSIDE THE INTEGRAL CONC. CURB & WALK SECTION. SIDEWALK REMOVAL AND REPLACEMENT SHALL BE IN ACCORDANCE WITH THE SPECIFICATIONS. INTEGRAL CONCRETE CURB & WALK (PATCHING) IS CURB & WALK LESS THAN 25" IN CONTINUOUS LENGTH. MINIMUM LENGTH OF PATCHES WILL BE 5".

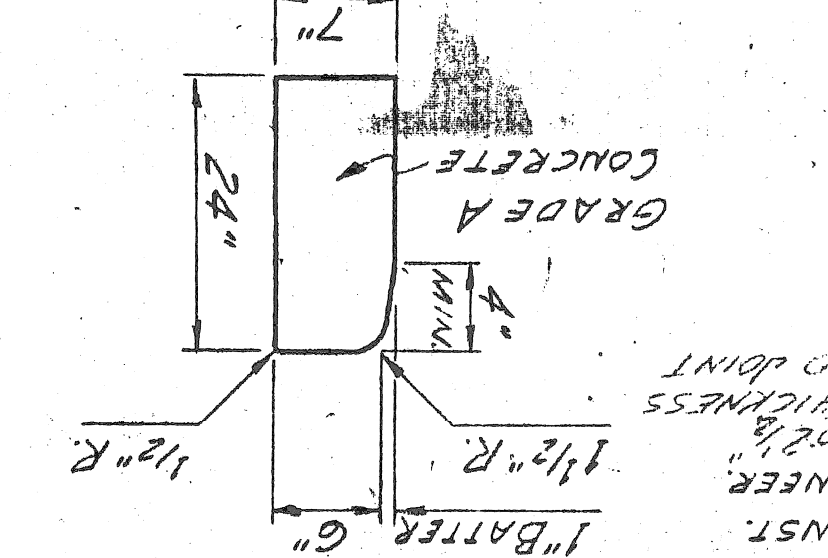
4" MIN. OR AS DIRECTED BY ENGINEER TO MATCH EXIST. CURB. (INCID.)

EXISTING SIDEWALK

PROPOSED SURFACE

EXISTING SURFACE

## CONCRETE CURB - STRAIGHT



3/16" WIDE SAWED JOINT FOR USE OVER LONGITUDINAL CONST. JOINTS IN THE BASE PAVEMENT AS DIRECTED BY THE ENGINEER. (AS DIRECTED BY THE ENGINEER) (DEPTH OF THE SAWED JOINT TO VARY BETWEEN 1/2" AND 1" WITH LEAD IN POLYMER COMPOUND (STAND).)

PROPOSED ASPHALTIC CONCRETE SURFACE

EXISTING CONCRETE PAVEMENT WITH A.C. SURFACE.

PLANE OF WEAKNESS JOINT

SAWED LONGITUDINAL

REPAIR AND UTILITY PATCHING

REMOVE TO A NEAR LINE BY SAWING, ROLLING CUTTER, BY THE ENGINEER. AIR SPADE OR OTHER METHOD APPROVED BY THE ENGINEER.

REPLACE WITH ASPHALTIC CONCRETE BASE COURSE, 25A. COMPACT WITH SELF-PROPELLED TRENCH ROLLER.

EXISTING CONC. PAVT. WITH A.C. SURFACE

BIT. BOND COAT SS-1H (INCID.)

PAVEMENT EDGE BASE PREPARATION

4" MIN. FOR THE FULL LENGTH OF THE JOINT

PROPOSED ASPHALTIC CONCRETE SURFACE

EXISTING SURFACE (CONC. OR ASPH. CONC.)

NOTCHING PAVEMENT FOR JOINT

TOP OF PROPOSED WEARING SURFACE WITH A.C. SURFACE

ASPHALTIC CONCRETE CURB

STANDARD LINE

RESURFACED PAVEMENT

EXISTING ASPH. OR CONC. DRIVE

PLACE ASPHALTIC MATERIAL TO PROVIDE TRANSITION AT EXISTING DRIVES AS DIRECTED BY THE ENGINEER. TO BE PAID AT THE CONTRACT PRICE PER TON OF THE TYPE OF MATERIAL USED.

EXISTING DRIVE CONNECTION

CONCRETE CURB CAP (PATCHING)

CONCRETE CURB CAP IS CURB CAP 25" OR MORE IN CONTINUOUS LENGTH AND SHALL BE BONDED TO THE EXISTING CURB WITH "WELDCRETE" OR APPROVED EQUAL DOWELS ARE NOT REQUIRED FOR CONC. CURB CAP.

CONCRETE CURB CAP (PATCHING) IS CURB CAP LESS THAN 25" IN CONTINUOUS LENGTH AND SHALL BE DOWELED TO THE EXISTING CURB AS SHOWN. MINIMUM LENGTH OF PATCHES SHALL BE 5".

EXISTING SURFACE

PROPOSED SURFACE

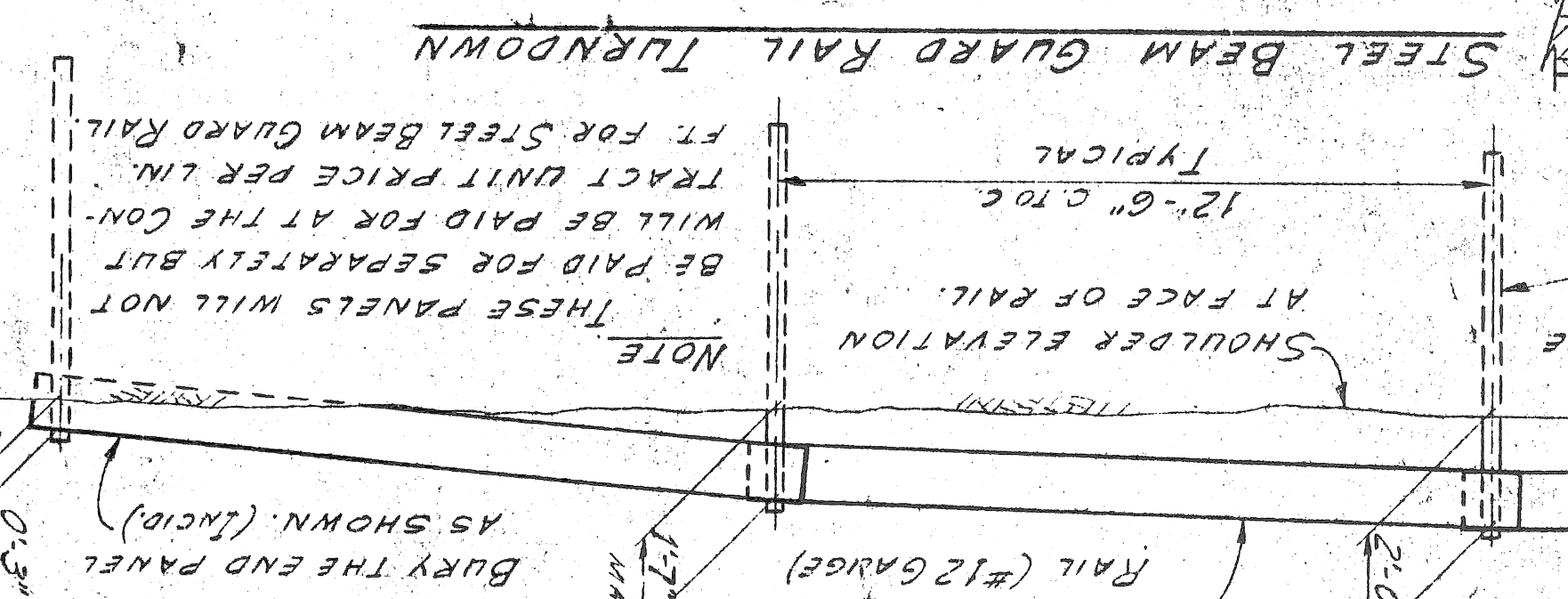
PAINT BLACK (PRIME COAT AND SECOND COAT - MIXTURE #G-B-4)

PAINT WHITE (PRIME COAT AND SECOND COAT - MIXTURE #17A)

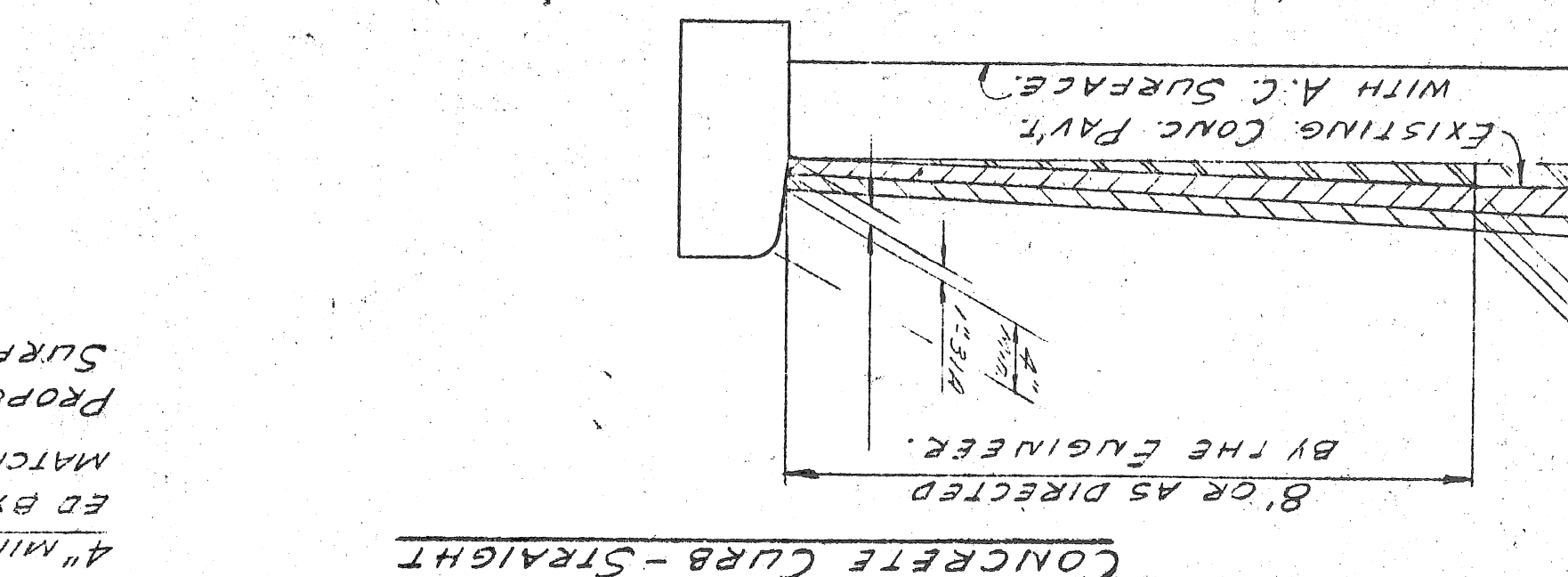
STANDARD 7" DIA. PRESERVATIVE TREATED WOOD POST.

NOTE: SEE THE BOARDS CURRENT GENERAL SPECIFICATIONS FOR ADDITIONAL REQUIREMENTS.

GUARD POST



## REMOVING ASPHALT SURFACE (PLAHER METHOD)



SHOULDER ELEVATION AT FACE OF RAIL.

12'-6" C.T.C. TYPICAL

RESURFACED PAVEMENT

EXISTING ASPH. OR CONC. DRIVE

PLACE ASPHALTIC MATERIAL TO PROVIDE TRANSITION AT EXISTING DRIVES AS DIRECTED BY THE ENGINEER. TO BE PAID AT THE CONTRACT PRICE PER TON OF THE TYPE OF MATERIAL USED.

EXISTING DRIVE CONNECTION

CONCRETE CURB CAP (PATCHING)

CONCRETE CURB CAP IS CURB CAP 25" OR MORE IN CONTINUOUS LENGTH AND SHALL BE BONDED TO THE EXISTING CURB WITH "WELDCRETE" OR APPROVED EQUAL DOWELS ARE NOT REQUIRED FOR CONC. CURB CAP.

CONCRETE CURB CAP (PATCHING) IS CURB CAP LESS THAN 25" IN CONTINUOUS LENGTH AND SHALL BE DOWELED TO THE EXISTING CURB AS SHOWN. MINIMUM LENGTH OF PATCHES SHALL BE 5".

EXISTING SURFACE

PROPOSED SURFACE

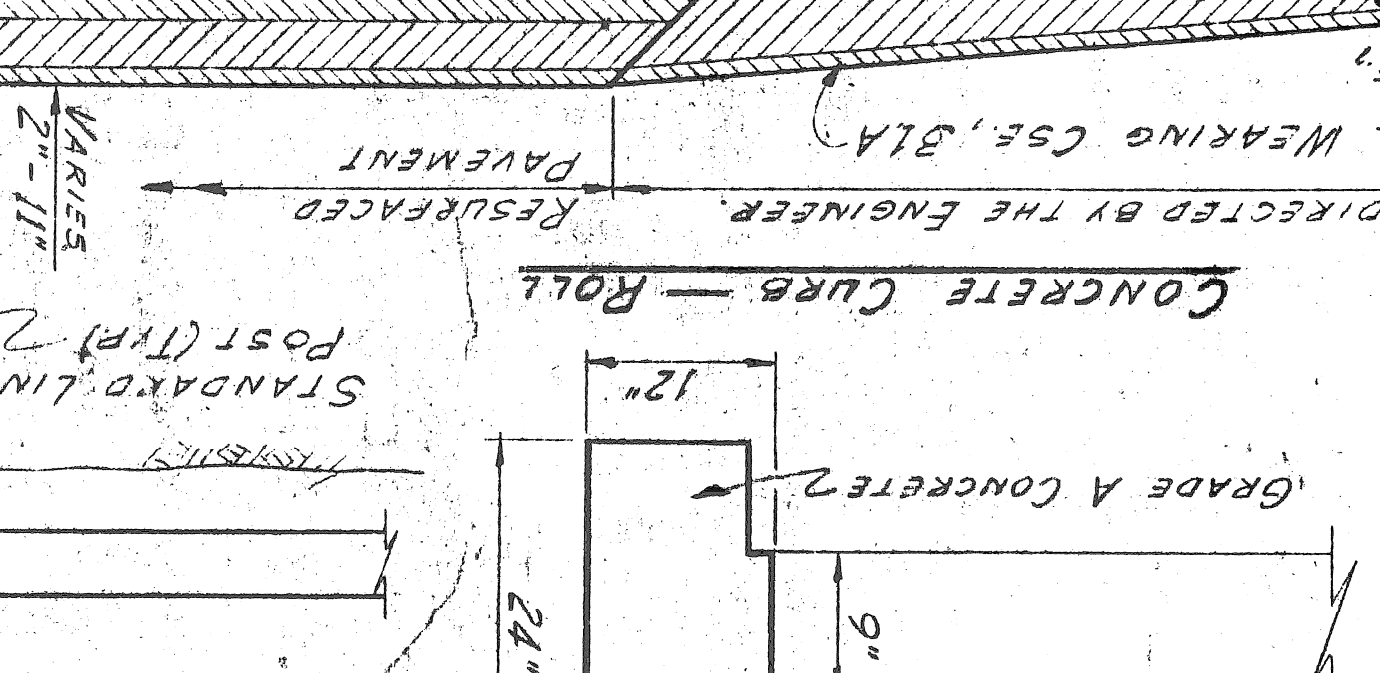
PAINT BLACK (PRIME COAT AND SECOND COAT - MIXTURE #G-B-4)

PAINT WHITE (PRIME COAT AND SECOND COAT - MIXTURE #17A)

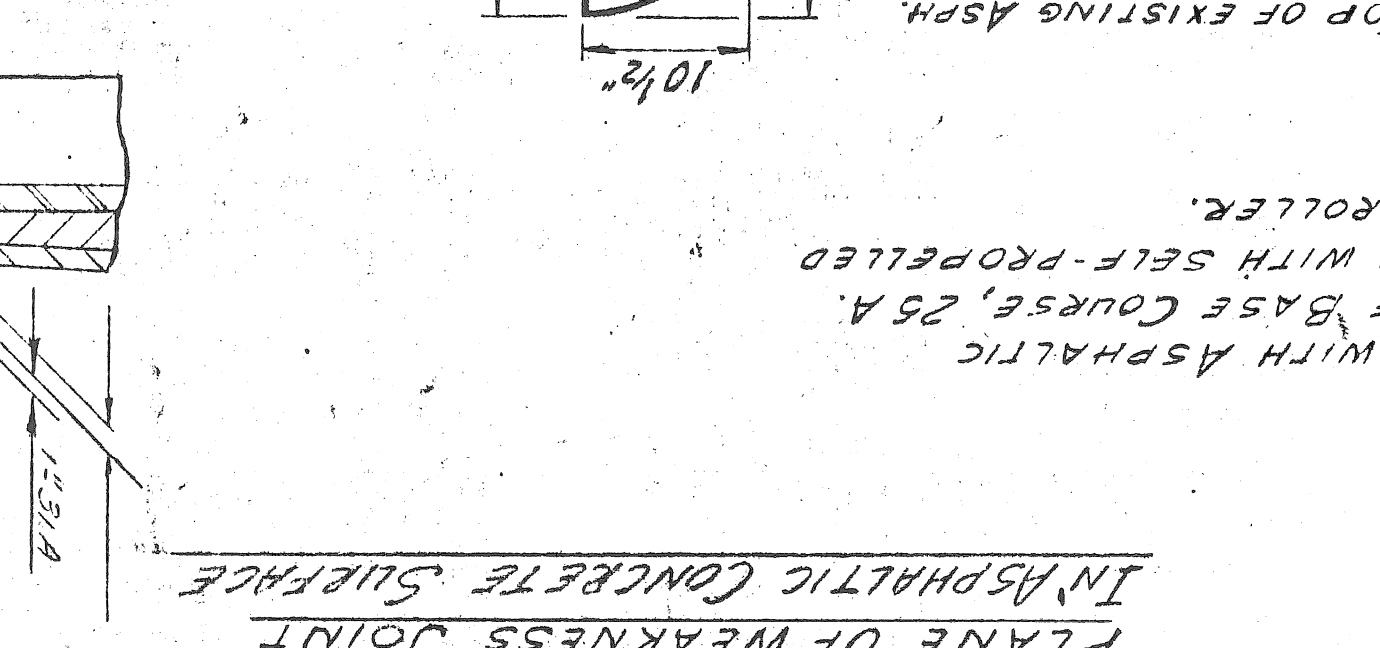
STANDARD 7" DIA. PRESERVATIVE TREATED WOOD POST.

NOTE: SEE THE BOARDS CURRENT GENERAL SPECIFICATIONS FOR ADDITIONAL REQUIREMENTS.

GUARD POST



## REMOVING ASPHALT SURFACE (PLAHER METHOD)



SHOULDER ELEVATION AT FACE OF RAIL.

12'-6" C.T.C. TYPICAL

RESURFACED PAVEMENT

EXISTING ASPH. OR CONC. DRIVE

PLACE ASPHALTIC MATERIAL TO PROVIDE TRANSITION AT EXISTING DRIVES AS DIRECTED BY THE ENGINEER. TO BE PAID AT THE CONTRACT PRICE PER TON OF THE TYPE OF MATERIAL USED.

EXISTING DRIVE CONNECTION

CONCRETE CURB CAP (PATCHING)

CONCRETE CURB CAP IS CURB CAP 25" OR MORE IN CONTINUOUS LENGTH AND SHALL BE BONDED TO THE EXISTING CURB WITH "WELDCRETE" OR APPROVED EQUAL DOWELS ARE NOT REQUIRED FOR CONC. CURB CAP.

CONCRETE CURB CAP (PATCHING) IS CURB CAP LESS THAN 25" IN CONTINUOUS LENGTH AND SHALL BE DOWELED TO THE EXISTING CURB AS SHOWN. MINIMUM LENGTH OF PATCHES SHALL BE 5".

EXISTING SURFACE

PROPOSED SURFACE

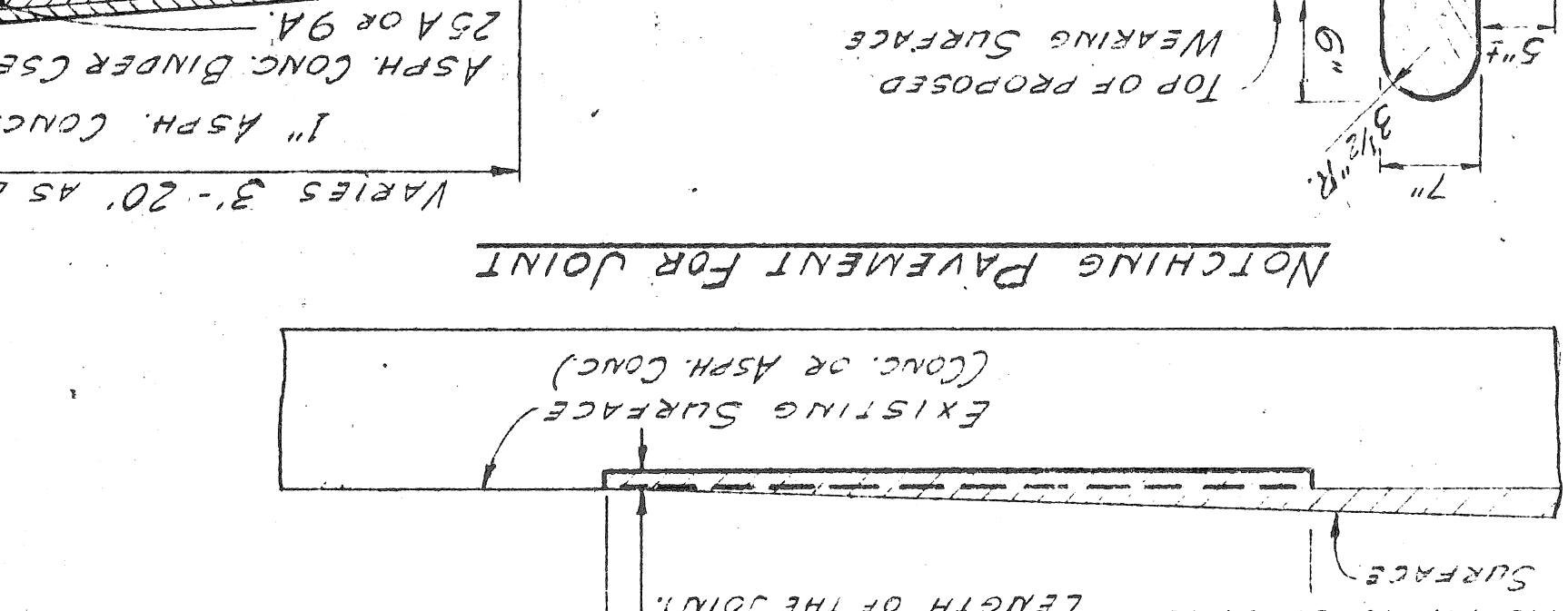
PAINT BLACK (PRIME COAT AND SECOND COAT - MIXTURE #G-B-4)

PAINT WHITE (PRIME COAT AND SECOND COAT - MIXTURE #17A)

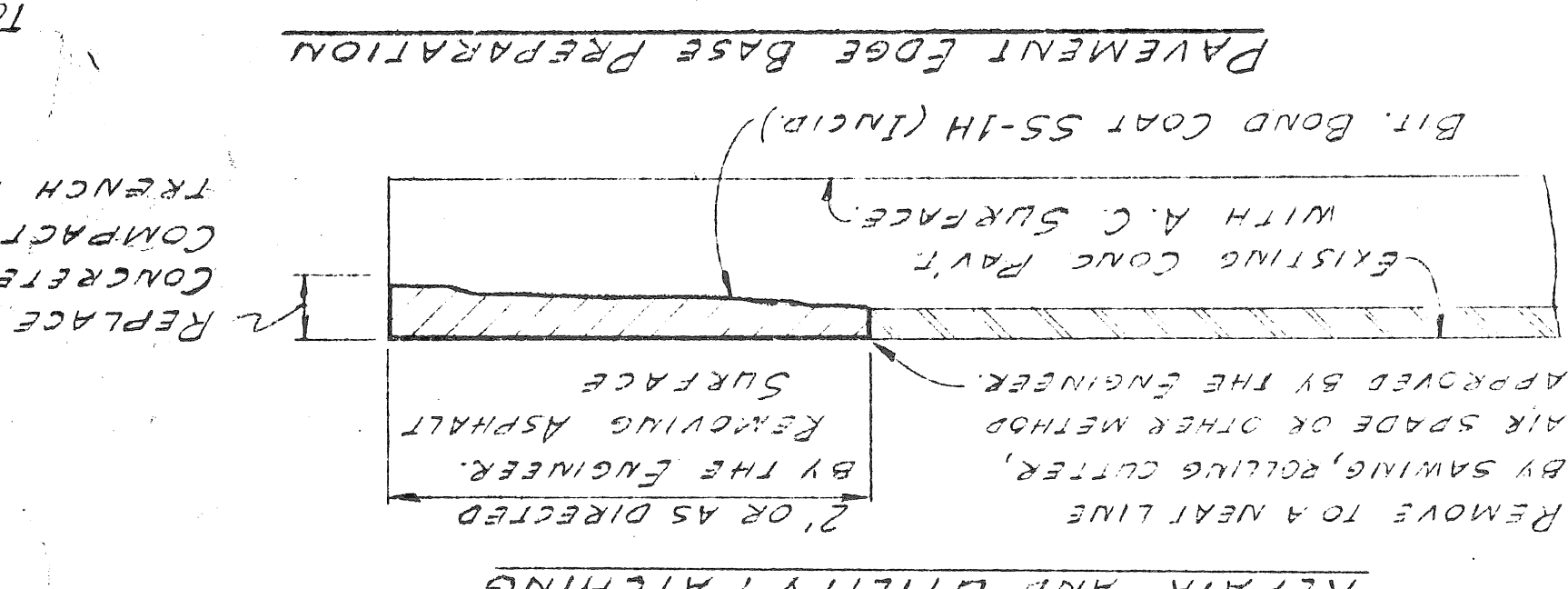
STANDARD 7" DIA. PRESERVATIVE TREATED WOOD POST.

NOTE: SEE THE BOARDS CURRENT GENERAL SPECIFICATIONS FOR ADDITIONAL REQUIREMENTS.

GUARD POST



## REMOVING ASPHALT SURFACE (PLAHER METHOD)



SHOULDER ELEVATION AT FACE OF RAIL.

12'-6" C.T.C. TYPICAL

RESURFACED PAVEMENT

EXISTING ASPH. OR CONC. DRIVE

PLACE ASPHALTIC MATERIAL TO PROVIDE TRANSITION AT EXISTING DRIVES AS DIRECTED BY THE ENGINEER. TO BE PAID AT THE CONTRACT PRICE PER TON OF THE TYPE OF MATERIAL USED.

EXISTING DRIVE CONNECTION

CONCRETE CURB CAP (PATCHING)

CONCRETE CURB CAP IS CURB CAP 25" OR MORE IN CONTINUOUS LENGTH AND SHALL BE BONDED TO THE EXISTING CURB WITH "WELDCRETE" OR APPROVED EQUAL DOWELS ARE NOT REQUIRED FOR CONC. CURB CAP.

CONCRETE CURB CAP (PATCHING) IS CURB CAP LESS THAN 25" IN CONTINUOUS LENGTH AND SHALL BE DOWELED TO THE EXISTING CURB AS SHOWN. MINIMUM LENGTH OF PATCHES SHALL BE 5".

EXISTING SURFACE

PROPOSED SURFACE

PAINT BLACK (PRIME COAT AND SECOND COAT - MIXTURE #G-B-4)

PAINT WHITE (PRIME COAT AND SECOND COAT - MIXTURE #17A)

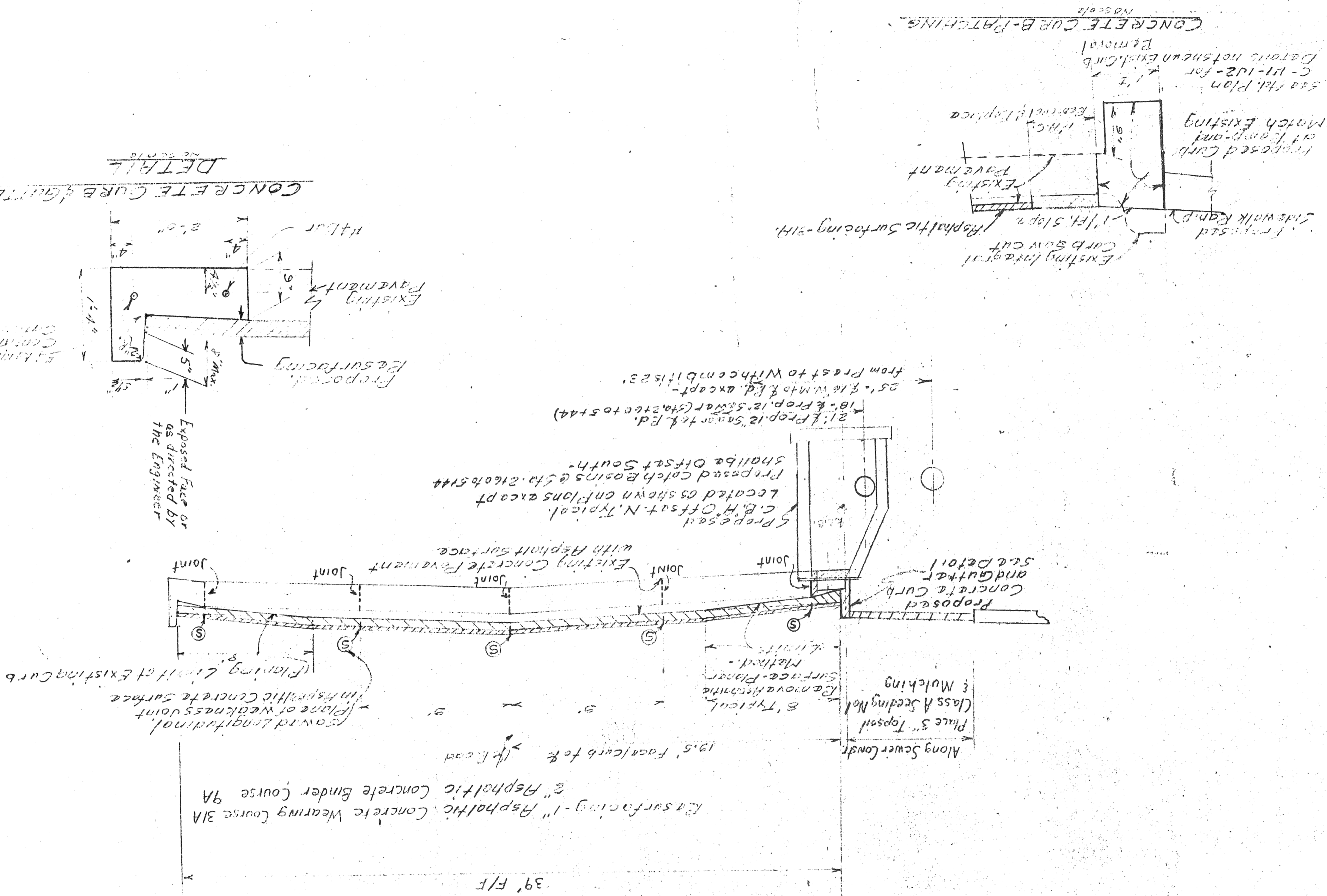
STANDARD 7" DIA. PRESERVATIVE TREATED WOOD POST.

NOTE: SEE THE BOARDS CURRENT GENERAL SPECIFICATIONS FOR ADDITIONAL REQUIREMENTS.

GUARD POST

# TIREMAN AVENUE GREENFIELD ROAD TO SCHAEFFER ROAD

Scale 1" = 4'

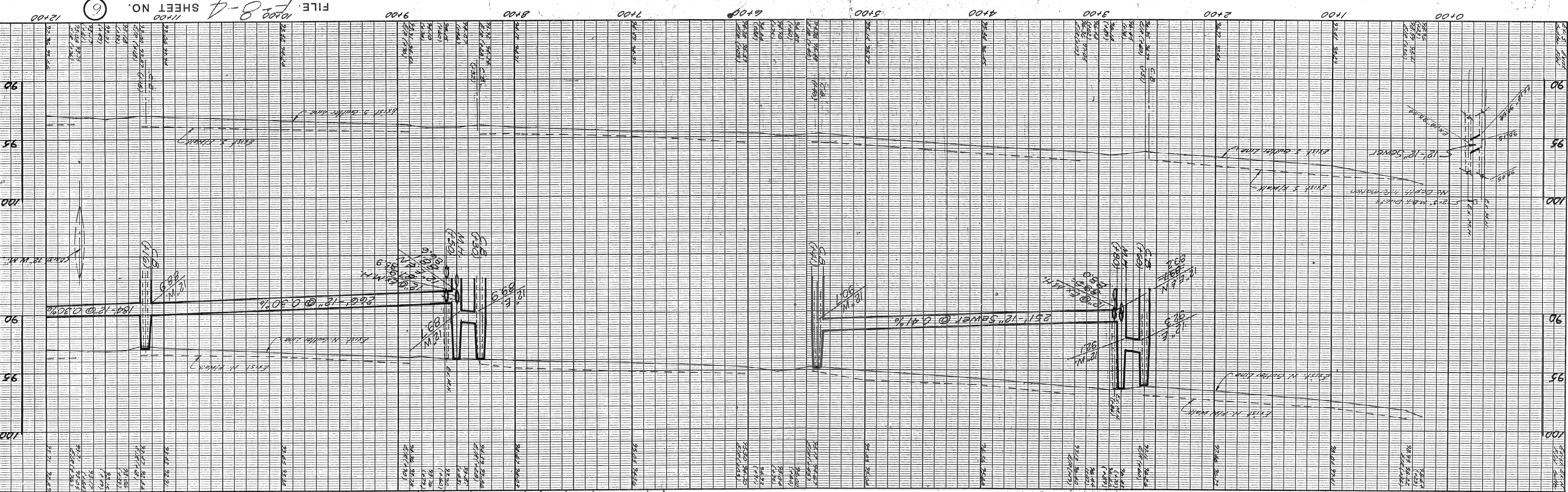


QUANTITY	ITEM
23395 SA YD	REMOVING ASPHALT SURFACE
9145 SA YD	PLANER METHOD
537 SA YD	REMOVING SIDEWALK
150 SA YD	REMOVING OLD PAVEMENT (PATCHING)
696 LM FT	REMOVING CURB (PATCHING)
EA	ADJUSTING MANHOLE FURNISHING COVER "A"
EA	ADJUSTING CATCH BASIN FURNISHING
2 EA	COVER "X"
EA	ADJUSTING WATER SHUTOFF RISER BOX
1 EA	ADJUSTING MONUMENT BOX
LM FT	RECONSTRUCTING M.H. C.B. OR W.G.W.
42 EA	ADJUSTING COVERS
LM FT	6" PIPE UNDERDRAIN
540 SA YD	CONCRETE PAVEMENT, 9" (PATCHING)
LM FT	CONCRETE CURB, STRAIGHT
LM FT	INTEGRAL CONCRETE CURB AND WALK
CU YD	AGGREGATE SHOULDER
TONS	CALCIUM CHLORIDE, APPLIED
1532 SA LB	4" CONCRETE SIDEWALK
3437 GAL	BITUMINOUS BOND COAT
GAL	BITUMINOUS PRIME COAT
LM FT	NOTCHING CONCRETE PAVEMENT FOR JOINT
52 STA	FREPARING EXISTING PAVEMENT
SAVED LONGITUDINAL PLANE OF WEAKNESS JOINT IN	ASPHALTIC CONCRETE SURFACE
25860 LM FT	CHIPPING EXISTING CONCRETE PAVEMENT
50 SA YD	9" CONCRETE BASE COURSE PAVT W/INT CURB
384 SA YD	4" CONCRETE SIDEWALK RAMP
2102 SA LB	REMOVING EXISTING CURB & GUTTER
607 LM FT	REMOVING CONCRETE CURB & GUTTER
280 LM FT	REMOVING CONCRETE CURB & GUTTER (PATCHING)
340 SA YD	REMOVING PAVEMENT
30 LM FT	REMOVING CURB
9 SA YD	9" CONCRETE BASE COURSE (PATCHING)
711 LM FT	CONCRETE CURB
607 LM FT	CONCRETE CURB & GUTTER
280 LM FT	CONCRETE CURB & GUTTER (PATCHING)
(ESTIMATED QUANTITIES FOR ASPHALTIC CONCRETE MIXTURES ARE BASED ON THE USE OF NATURAL AGGREGATES)	
TONS	ASPH. CONC BINDER COURSE, 25A
2512 TONS	ASPH. CONC BINDER COURSE, 9A
1238 TONS	ASPH. CONC WEARING COURSE, 31A
543 TONS	ASPH. CONC BASE COURSE, 25A
9 CU YD	CONCRETE BASE COURSE
100 CU YD	TOPSOIL
20 AC.	SEEDING No. 1
20 AC.	MULCHING
1174 LM FT	12" SEWER C76 CL II TR. A 0'-7" DEEP
10 FA.	SEWER BULKHEADS, 12" DIA.
4 FA.	MANHOLE "A"
9 FA.	CATCH BASIN "A"
25 FA.	CLEAN EXIST. STREAM DRAINAGE STRUCTURES

CONTRACT ASSIGNED BY THE CITY OF GREENFIELD  
 APPROVED BY THE CITY ENGINEER  
 PROJECT NO. 1772 AC PROJECT 4

DATE	3/78
BY	M. J. [unclear]
REVISION	
NO. OF SHEETS	1/12
TOTAL SHEETS	12
PROJECT	WAYNE COUNTY ROAD COMMISSIONERS
NO. OF SHEETS	1/12
TOTAL SHEETS	12

DATE	3/78
BY	M. J. [unclear]
REVISION	
NO. OF SHEETS	1/12
TOTAL SHEETS	12
PROJECT	WAYNE COUNTY ROAD COMMISSIONERS
NO. OF SHEETS	1/12
TOTAL SHEETS	12



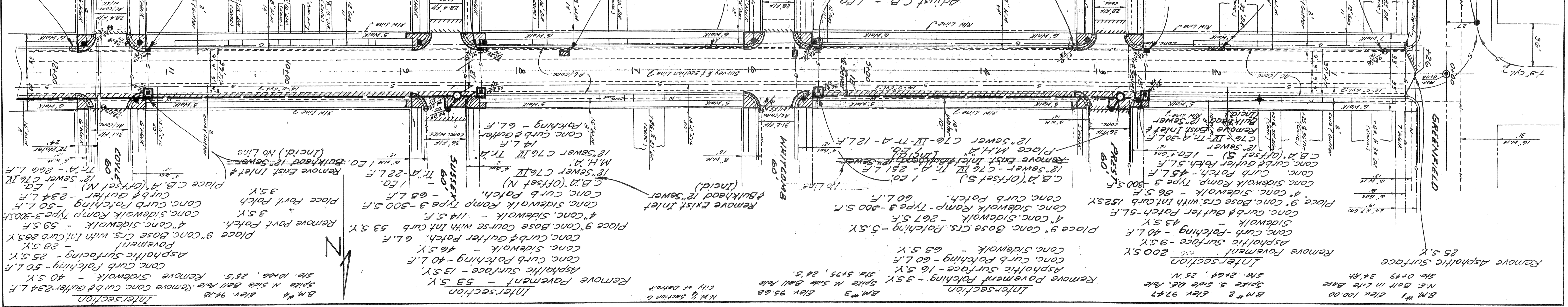
NO.	ITEM	BY	DATE
1	AS CONST. U.M.L. - 1/78		

CHAIRMAN  
VICE-CHAIRMAN  
BOARD OF  
WAYNE COUNTY ROAD COMMISSIONERS  
DETROIT, MICHIGAN 48226

CONTRACT  
T-8-2  
DATE  
JUN 1976  
SCALE  
1" = 40'

DRAWN BY  
CHECKED BY  
APPROVED  
ENGINEER OF HIGHWAYS  
REG. P.R. TAG

FILE: 10700-8-4 SHEET NO. 6



Remove Asphaltic surface - 25.5 Y.  
Remove Pavement Patching - 10.5 Y.  
Asphaltic surface - 60 L.F.  
conc. curb patching - 40.5 Y.  
Remove Asphaltic surface - 13.5 Y.  
Remove Pavement - 53.5 Y.  
B.M. #1 Elev 94.28  
B.M. #2 Elev 94.77  
B.M. #3 Elev 95.68  
B.M. #4 Elev 95.68  
N.H. 1/4 Section 6  
City of Dearborn

Remove Asphaltic surface - 25.5 Y.  
Remove Pavement Patching - 10.5 Y.  
Asphaltic surface - 60 L.F.  
conc. curb patching - 40.5 Y.  
Remove Asphaltic surface - 13.5 Y.  
Remove Pavement - 53.5 Y.  
B.M. #1 Elev 94.28  
B.M. #2 Elev 94.77  
B.M. #3 Elev 95.68  
B.M. #4 Elev 95.68  
N.H. 1/4 Section 6  
City of Dearborn

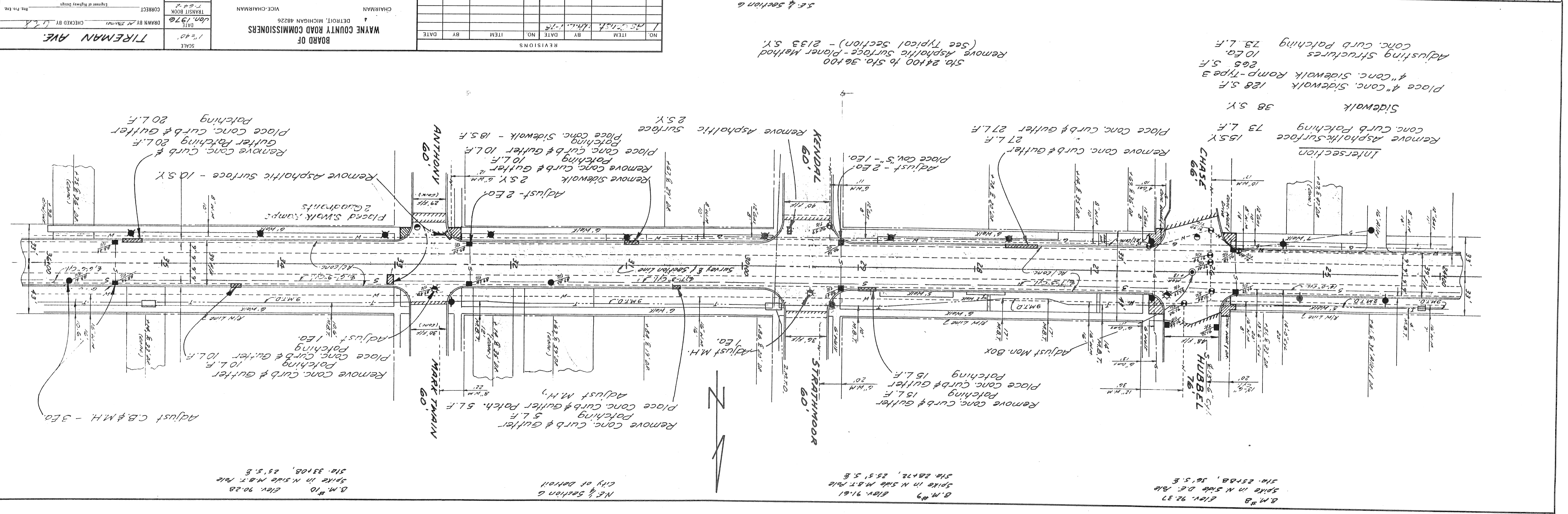
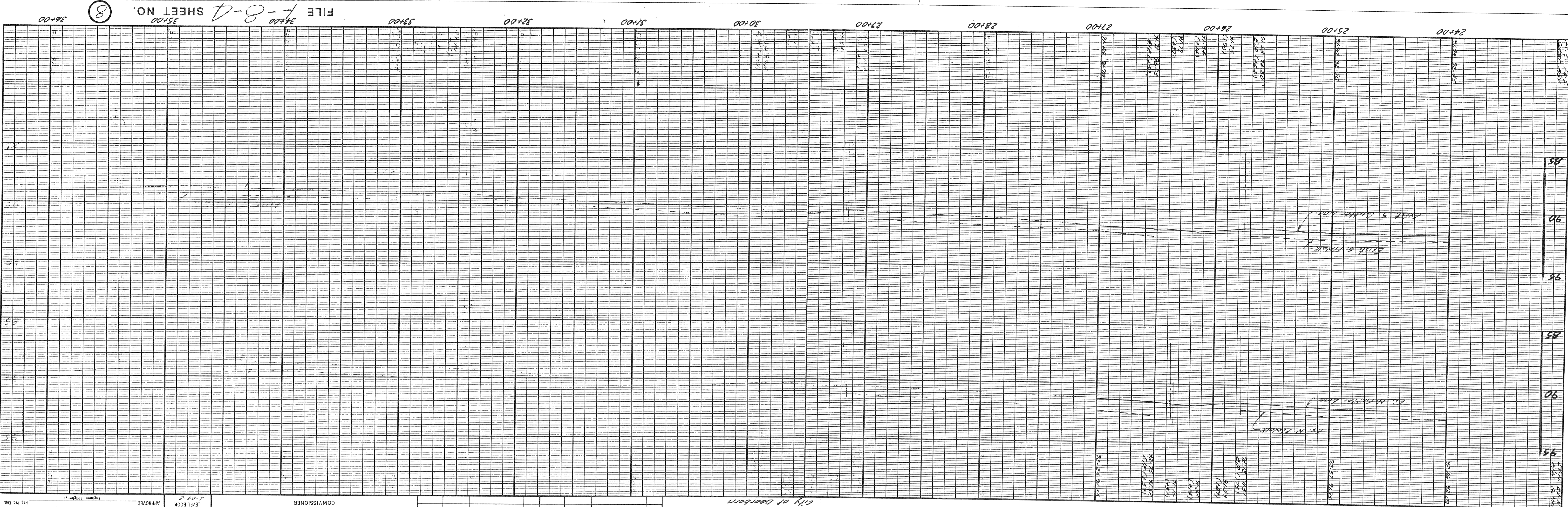


DATE	1/14
BY	DL
APPROVED	DL
DESIGNED	DL
CHECKED	DL
DATE	1/14
BY	DL
APPROVED	DL
DESIGNED	DL
CHECKED	DL

DATE	1/14
BY	DL
APPROVED	DL
DESIGNED	DL
CHECKED	DL
DATE	1/14
BY	DL
APPROVED	DL
DESIGNED	DL
CHECKED	DL

PROFILE  
NOTE BOOK  
NO. 1124  
DATE 1/14  
BY DL  
APPROVED DL  
DESIGNED DL  
CHECKED DL

PLAN  
NOTE BOOK  
NO. 1124  
DATE 1/14  
BY DL  
APPROVED DL  
DESIGNED DL  
CHECKED DL



City of Dearborn  
S.E. Section 6

Remove Asphaltic Surface - Planer Method  
(See Typical Section) - 2133 S.Y.

Place 4" Conc. Sidewalk 128 S.F.  
Adjusting Conc. Curb Patching 73 L.F.  
268 S.F.

Remove Asphaltic Surface - 10 S.Y.  
Place Conc. Curb & Gutter 20 L.F.  
Adjust 2 E.O.  
Remove Conc. Curb & Gutter 10 L.F.

Remove Asphaltic Surface - 10 S.Y.  
Place Conc. Curb & Gutter 20 L.F.  
Adjust 2 E.O.  
Remove Conc. Curb & Gutter 10 L.F.

Remove Conc. Curb & Gutter 10 L.F.  
Place Conc. Curb & Gutter 10 L.F.  
Adjust M.H.  
Place Conc. Curb & Gutter Patch. 5 L.F.

Remove Conc. Curb & Gutter 15 L.F.  
Place Conc. Curb & Gutter 15 L.F.  
Adjust Mon. Box  
Place Conc. Curb & Gutter 27 L.F.

Remove Asphaltic Surface 10 S.Y.  
Place Conc. Curb & Gutter 20 L.F.  
Adjust 2 E.O.  
Remove Conc. Curb & Gutter 10 L.F.

Remove Asphaltic Surface - 185 F.  
Place Conc. Sidewalk - 185 F.  
Place Conc. Curb & Gutter 10 L.F.  
Adjust 2 E.O.  
Remove Conc. Curb & Gutter 10 L.F.

NO.	ITEM	BY	DATE
1	AS-1111	DL	1-14

REVISIONS

CHAIRMAN  
VICE-CHAIRMAN  
COMMISSIONER

BOARD OF  
WAYNE COUNTY ROAD COMMISSIONERS  
DETROIT, MICHIGAN 48226

DATE  
1/14

SCALE  
1" = 40'

APPROVED  
LEVEL BOOK  
TRANSIT BOOK  
CORRECT  
DRAWN BY  
CHECKED BY  
DATE  
1/14

TIREMAN AVE.

8 M. 10 Elev. 90.28  
Spike in N. Side M.B.T. Pole  
Sta. 33+08, 25.5' E.

8 M. 10 Elev. 91.61  
Spike in N. Side M.B.T. Pole  
Sta. 28+72, 25.5' E.

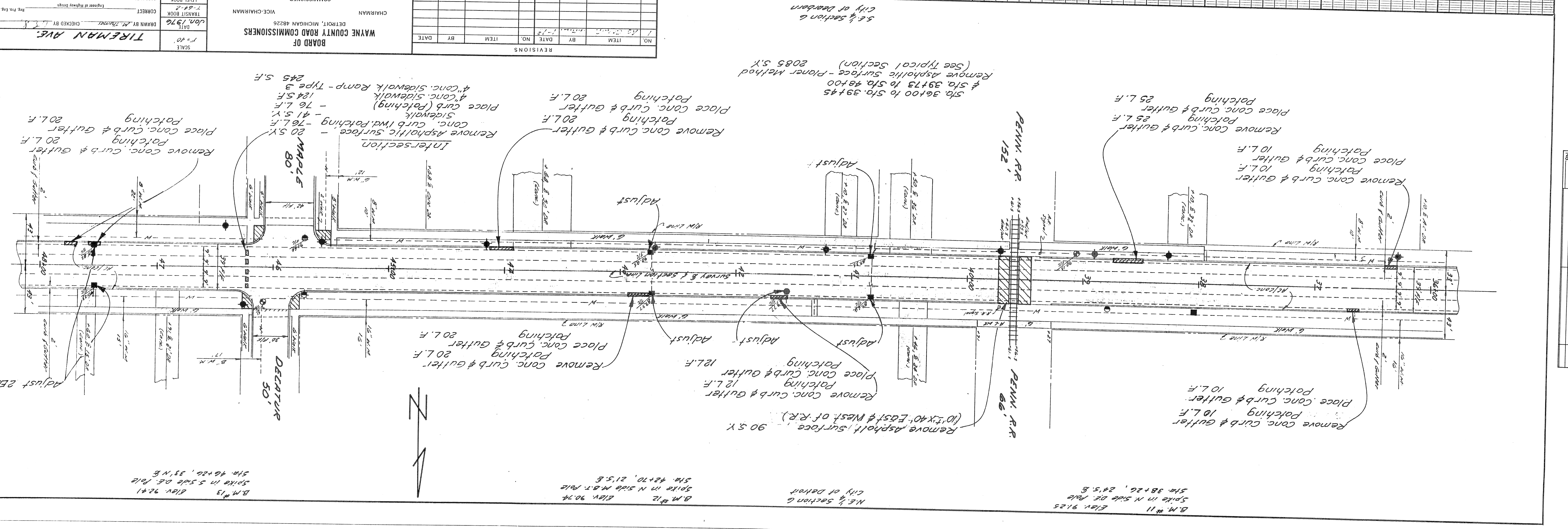
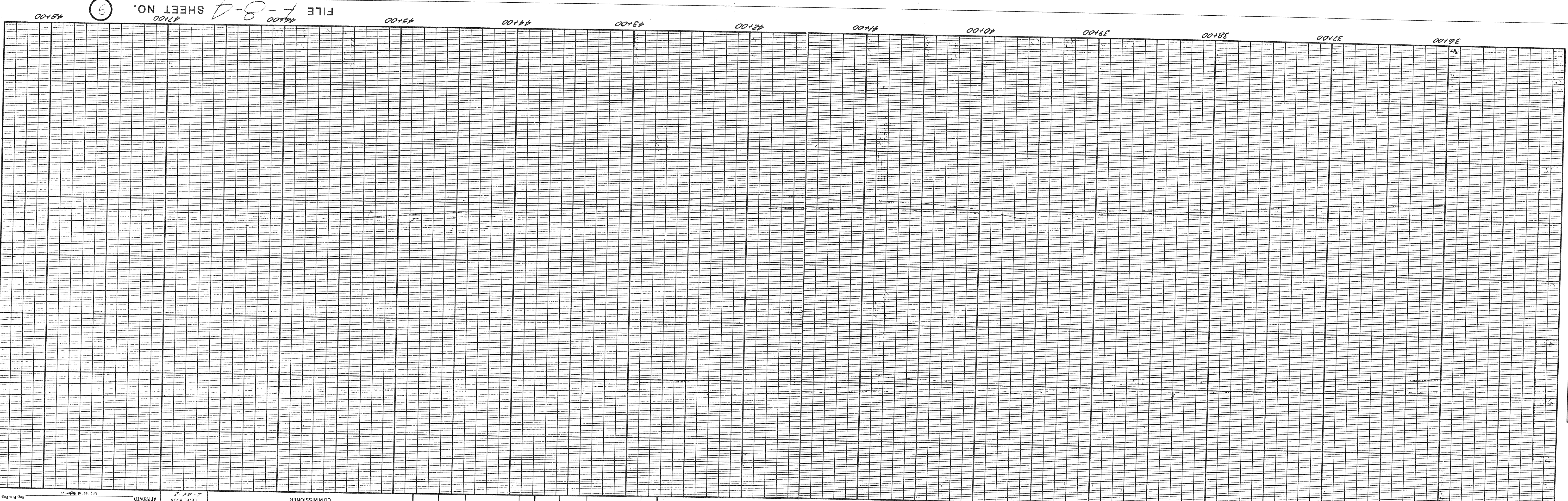
8 M. 10 Elev. 92.37  
Spike in N. Side D.B. Pole  
Sta. 25+88, 26.5' E.

**PROFILE**

DATE	1/28
BY	DL
CHECKED	DL
NO. OF SHEETS	3
PROJECT	11000
DATE	1/28
BY	DL
CHECKED	DL
NO. OF SHEETS	3
PROJECT	11000

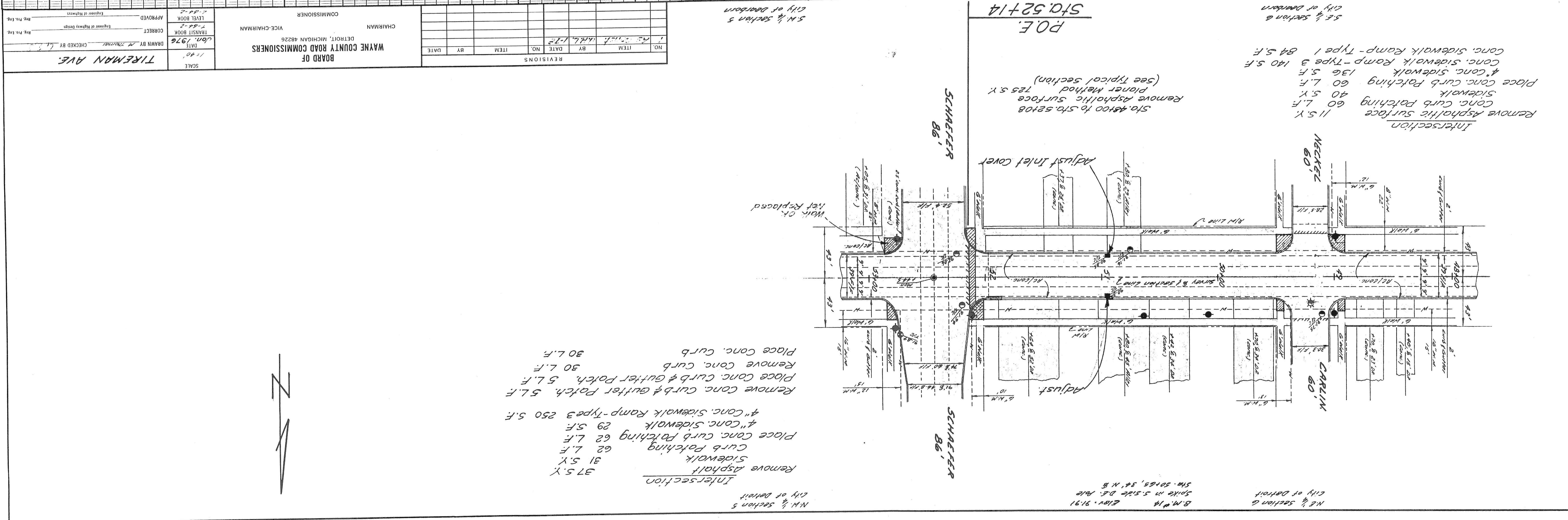
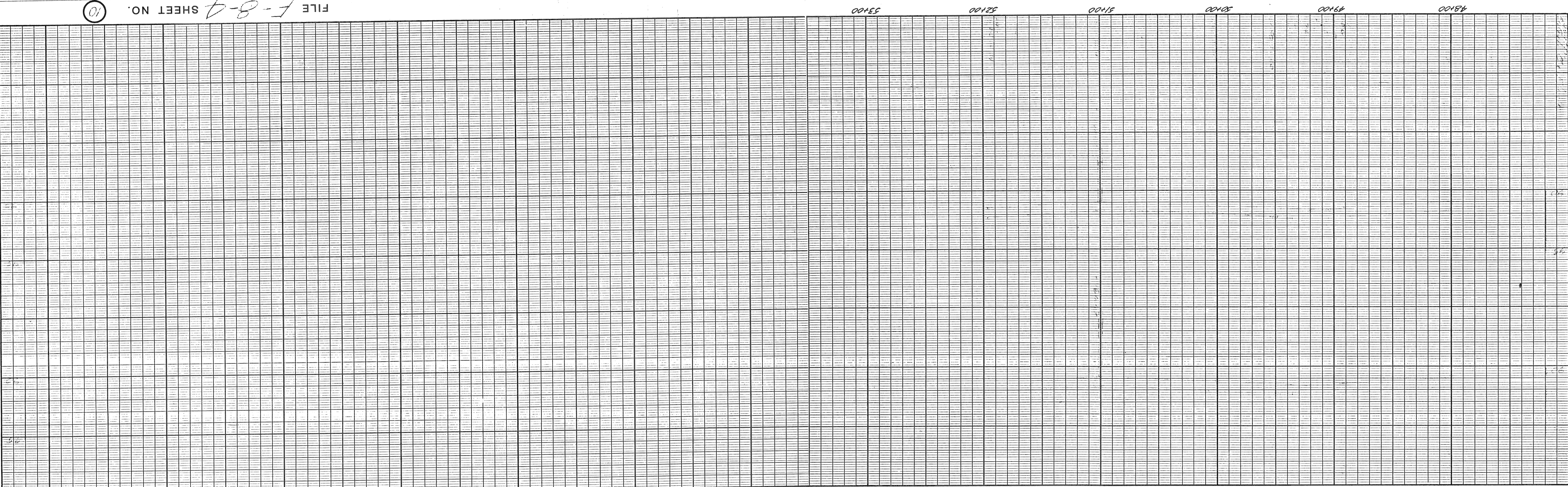
**PLAN**

DATE	1/28
BY	DL
CHECKED	DL
NO. OF SHEETS	3
PROJECT	11000
DATE	1/28
BY	DL
CHECKED	DL
NO. OF SHEETS	3
PROJECT	11000



DATE	
BY	
PROJECT	
SURVEY	
NOTE BOOK	
No.	

DATE	
BY	
PROJECT	
SURVEY	
NOTE BOOK	
No.	



NO.	ITEM	BY	DATE
1	AS SHOWN	A.H.L.	1-12

**WAYNE COUNTY ROAD COMMISSIONERS**  
 DETROIT, MICHIGAN 48226  
 VICE-CHAIRMAN  
 CHAIRMAN

**TIREMAN AVE.**

APPROVED: \_\_\_\_\_  
 ENGINEER OF HIGHWAY DESIGN

CORRECT: \_\_\_\_\_  
 TRANSIT BOOK

DATE: Jan. 1976  
 DRAWN BY: M. THOMPSON  
 CHECKED BY: L. J. \_\_\_\_\_

SCALE: 1" = 40'

**Revisions:**

Remove Asphalt 37 S.Y.  
 Sidewalk 31 S.Y.  
 Place Conc. Curb Patching 62 L.F.  
 4" Conc. Sidewalk 29 S.F.  
 4" Conc. Sidewalk Ramp-Type 3 250 S.F.  
 Remove Conc. Curb & Gutter Patch. 5 L.F.  
 Place Conc. Curb & Gutter Patch. 30 L.F.  
 Place Conc. Curb 30 L.F.

Inter-section  
 Remove Asphalt 75 S.Y.  
 Sidewalk 40 S.Y.  
 Place Conc. Curb Patching 60 L.F.  
 4" Conc. Sidewalk Ramp-Type 1 84 S.F.  
 4" Conc. Sidewalk Ramp-Type 3 140 S.F.  
 Conc. Sidewalk 136 S.F.  
 Place Conc. Curb Patching 60 L.F.

Remove Asphalt Surface 115 Y.  
 Conc. Curb Patching 60 L.F.  
 Conc. Sidewalk Ramp-Type 1 84 S.F.

Remove Asphalt Surface  
 Conc. Curb Patching 60 L.F.  
 Sidewalk 40 S.Y.  
 Place Conc. Curb Patching 60 L.F.  
 4" Conc. Sidewalk Ramp-Type 3 140 S.F.  
 Conc. Sidewalk 136 S.F.  
 Conc. Sidewalk Ramp-Type 1 84 S.F.

Sta. 48+00 to Sta. 52+08  
 Remove Asphalt Surface  
 Planer Method  
 75 S.Y.

Adjust Inlet Cover

Adjust

NE 1/4 Section 6  
 City of Detroit  
 B.M. #14 Elev. 91.91  
 Spike in S. Side D.E. Pole  
 Sta. 50+65, 54' N.B.

SW 1/4 Section 5  
 City of Detroit  
 N.W. #14 Elev. 91.91  
 Spike in S. Side D.E. Pole  
 Sta. 50+65, 54' N.B.

5 N. 1/2 Section 5  
 City of Dearborn

5 E. 1/2 Section 6  
 City of Dearborn