

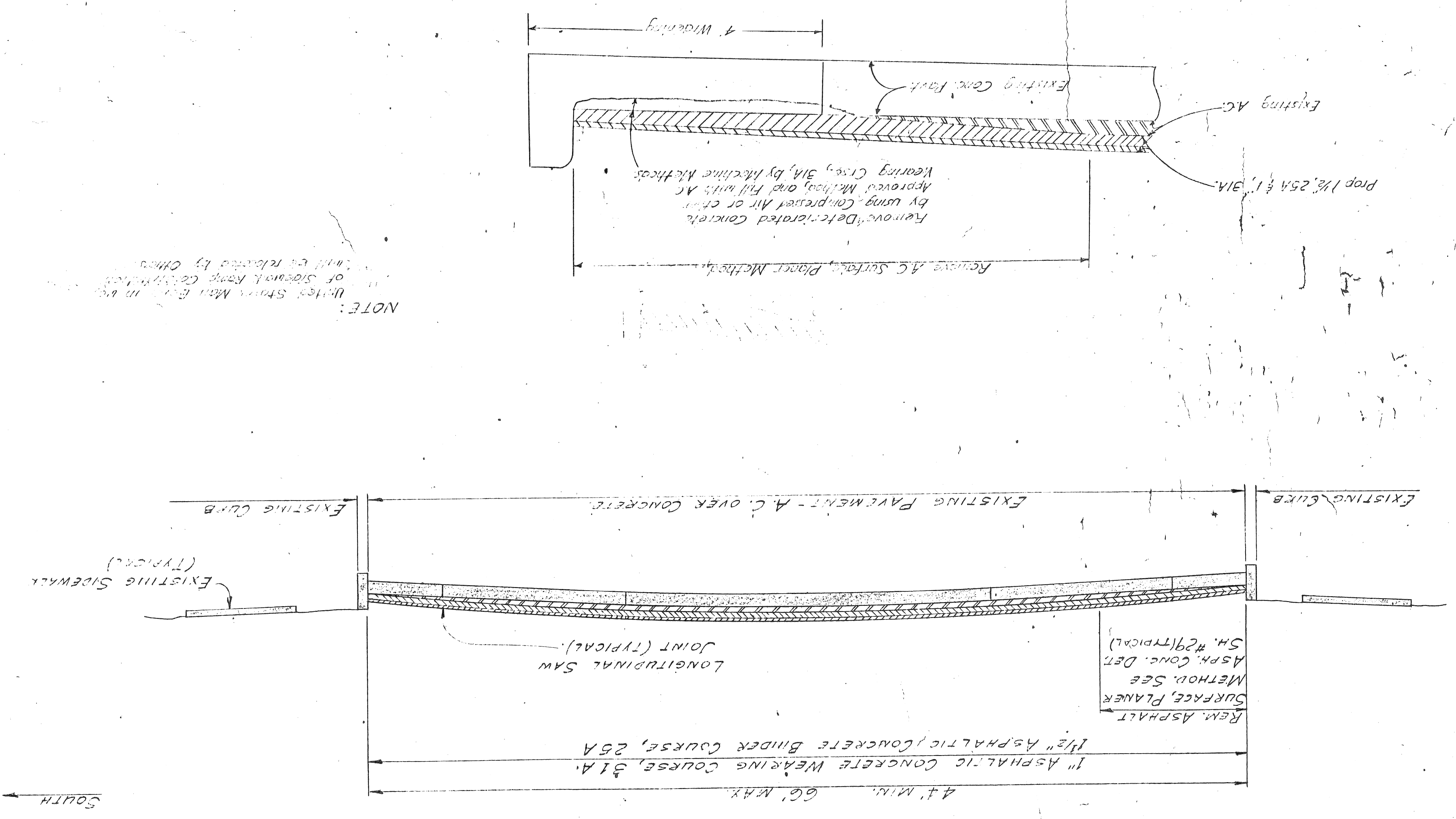
PORTLAND-GRAND RIVER to Wyoming

FIVE MILE ROAD

GRAND RIVER TO 200' E. OF WYOMING

TYPICAL CROSS-SECTION

SCALE: 1"=4'



QUANTITY	ITEM
1750 SA Yd	REMOVING ASPHALT SURFACE
28400 SA Yd	PLANE METHOD
500 SA Yd	REMOVING OLD PAVEMENT (PATCHING)
250 SA Yd	REMOVING SIDEWALK
750 Lm Ft	REMOVING CURB (PATCHING)
5 EA.	ADJUSTING MANHOLE, FURNISHING COVER "A"
5 EA.	ADJUSTING CATCH BASIN, FURNISHING COVER "X"
5 EA.	ADJUSTING WATER SHUTOFF RISEE BOX
1 EA.	ADJUSTING MONUMENT BOX
20 Lm Ft	RECONSTRUCTING M.H., C.B. or W.G.W.
420 EA.	ADJUSTING COVERS
6" PIPE UNDERDRAIN	6" PIPE UNDERDRAIN
50 SA Yd	CONCRETE PAVEMENT, 9" (PATCHING)
750 Lm Ft	CONCRETE CURB, (PATCHING)
3000 Lm Ft	INTEGRAL CONCRETE CURB AND WALK
CU Yd	AGGREGATE SHOULDER
TONS	CALCIUM CHLORIDE, APPLIED
14700 GAL.	BITUMINOUS BOND COAT
GAL.	BITUMINOUS PRIME COAT
Lm Ft	NOTCHING CONCRETE PAVEMENT FOR JOINT
160 STA.	PREPARING EXISTING PAVEMENT
SAWED LONGITUDINAL PLANE OF WEAKNESS JOINT IN ASPHALTIC CONCRETE SURFACE	61800 Lm Ft
13 SA Yd	CHIPPING EXISTING CONCRETE PAVEMENT
2000 Lm Ft	CONCRETE CURB, CAP
285 EA.	CLEANING EXISTING STORM DRAINAGE STRUCTURES
1 EA.	PLACING MONUMENT BOX AS FURNISHED
600 Lm Ft	CONCRETE CURB, CAP (PATCHING)
2000 Lm Ft	INTEGRAL CONCRETE CURB AND WALK (PATCHING)
4100 SA Yd	4" CONCRETE SIDEWALK, RAMP
1 EA.	REMOVING STUMPS, 37 IN. DIA. OR LARGER
7340 TONS	ASPH. CONC. BINDER COURSE, 25A
6950 TONS	ASPH. CONC. BINDER COURSE, 9A
1200 TONS	ASPH. CONC. WEARING COURSE, 31A
1200 TONS	ASPH. CONC. BASE COURSE, 25A

(ESTIMATED QUANTITIES FOR ASPHALTIC CONCRETE MIXTURES ARE BASED ON THE USE OF NATURAL AGGREGATES)

ASPHALTIC CONCRETE WEARING COURSE 31A FOR MACHINE LEVELLING
 South Side: 2150 to 16400
 54480 to 159100
 Normal Side: 15100 to 21150
 41100 to 61130
 27150 to 133400
 147100 to 154450
 or
 of locations as directed by the Engineer.

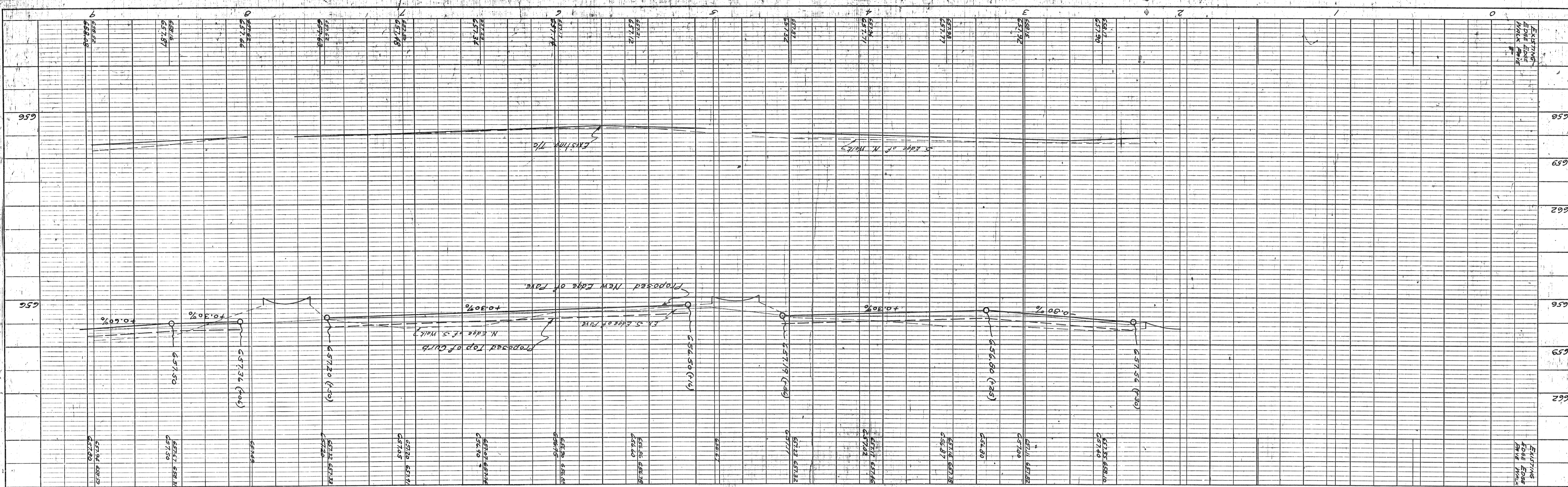
APPROVED: [Signature]
 ENGINEER IN CHARGE
 CORRECT: [Signature]
 ASSISTANT ENGINEER

1974 AC PROJECT 45479

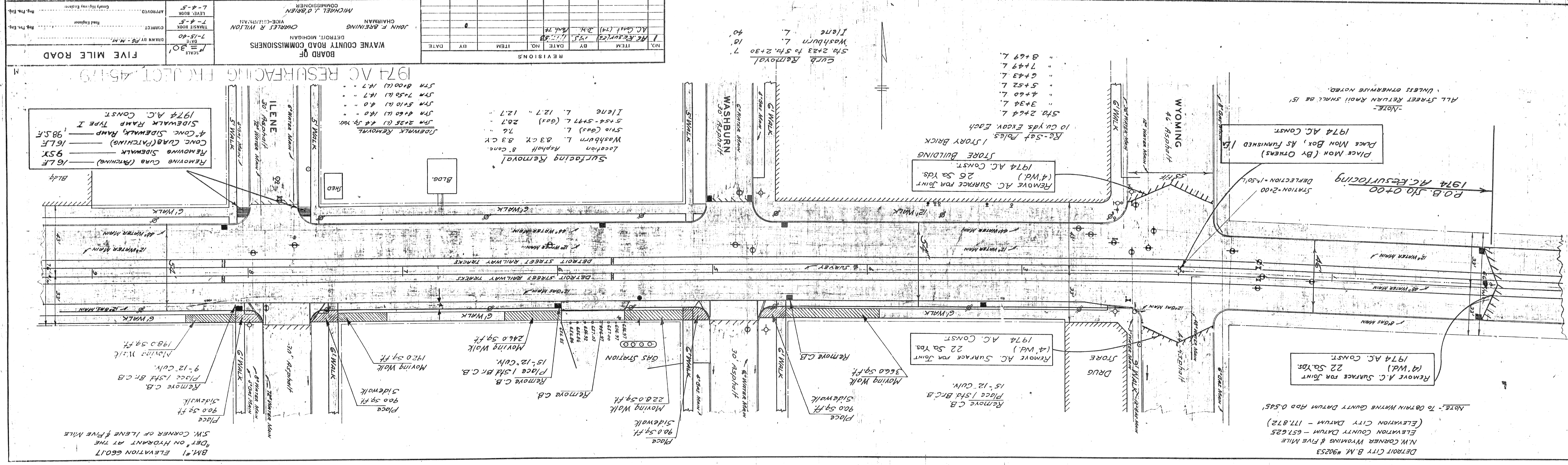
NOTE: Under Street Man Hole in vicinity of storm drain, concrete should be removed by chipping.

PROFILE	DATE
SUPERSED	
NOTED	
GRADES CHECKED	
BY M.A. NOTED	
STRUCTURE NOTATIONS CHECKED	

PLAN	DATE
SUPERSED	
NOTED	
ALIGNMENT CHECKED	
BY OF WAY CHECKED	



CUT
FILL



NO.	ITEM	BY	DATE	NO.	ITEM	BY	DATE
1	AC SURFACE	J.M.	11-25-80	7	Curb Removal	J.M.	11-25-80
2	AC SURFACE	J.M.	11-25-80	8	Washburn	J.M.	11-25-80
3	AC SURFACE	J.M.	11-25-80	9	Washburn	J.M.	11-25-80
4	AC SURFACE	J.M.	11-25-80	10	Washburn	J.M.	11-25-80

REVISIONS

DATE: 7-15-80
SCALE: 1" = 30'
DRAWN BY: J.M.
CHECKED BY: J.M.
APPROVED BY: J.M.

WAYNE COUNTY ROAD COMMISSIONERS
CHAIRMAN: JOHN F. BREWING
VICE-CHAIRMAN: CHARLES R. WILLSON
COMMISSIONER: MICHAEL J. O'BRIEN

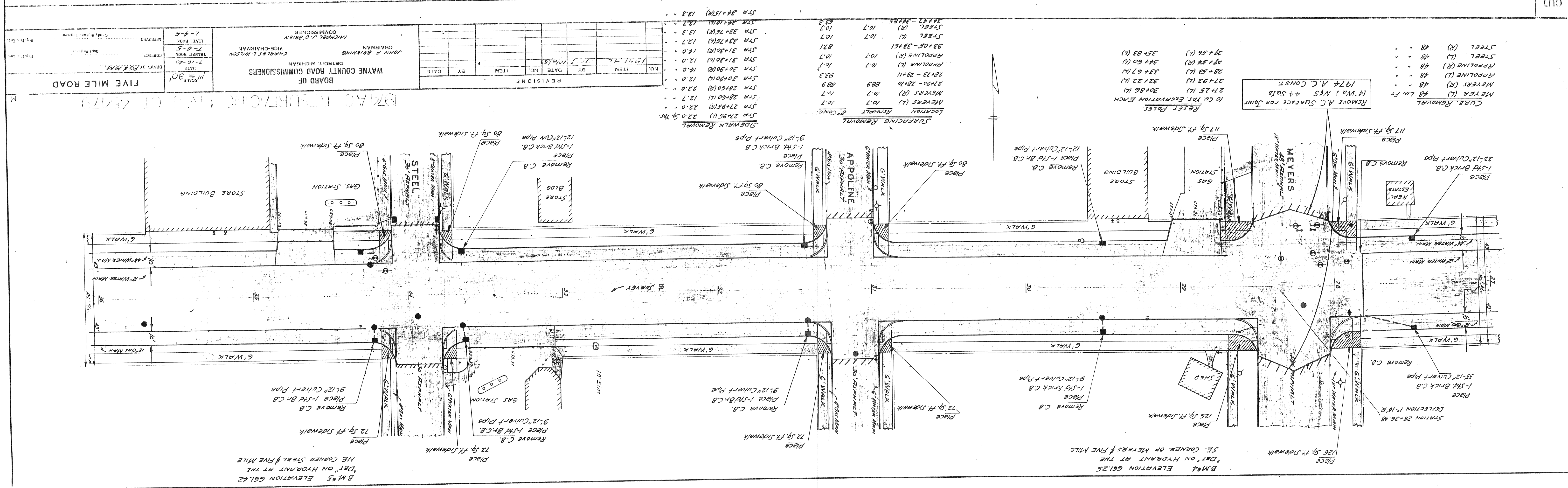
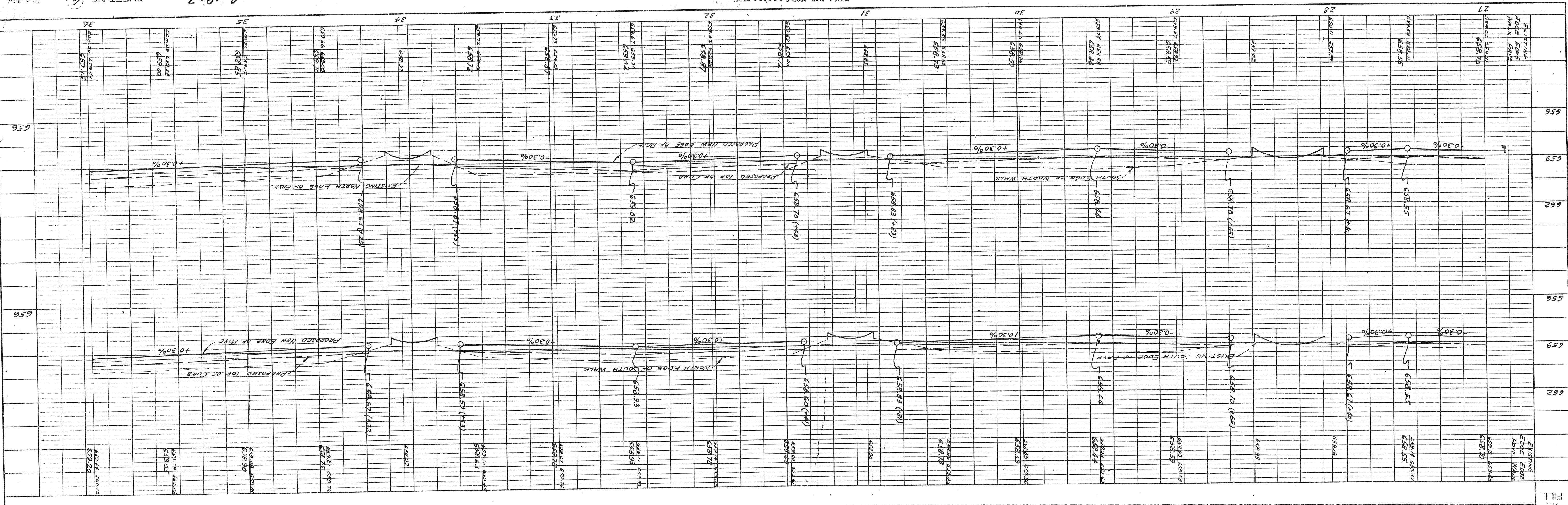
1974 AC RESURFACING PROJECT 4510-4570

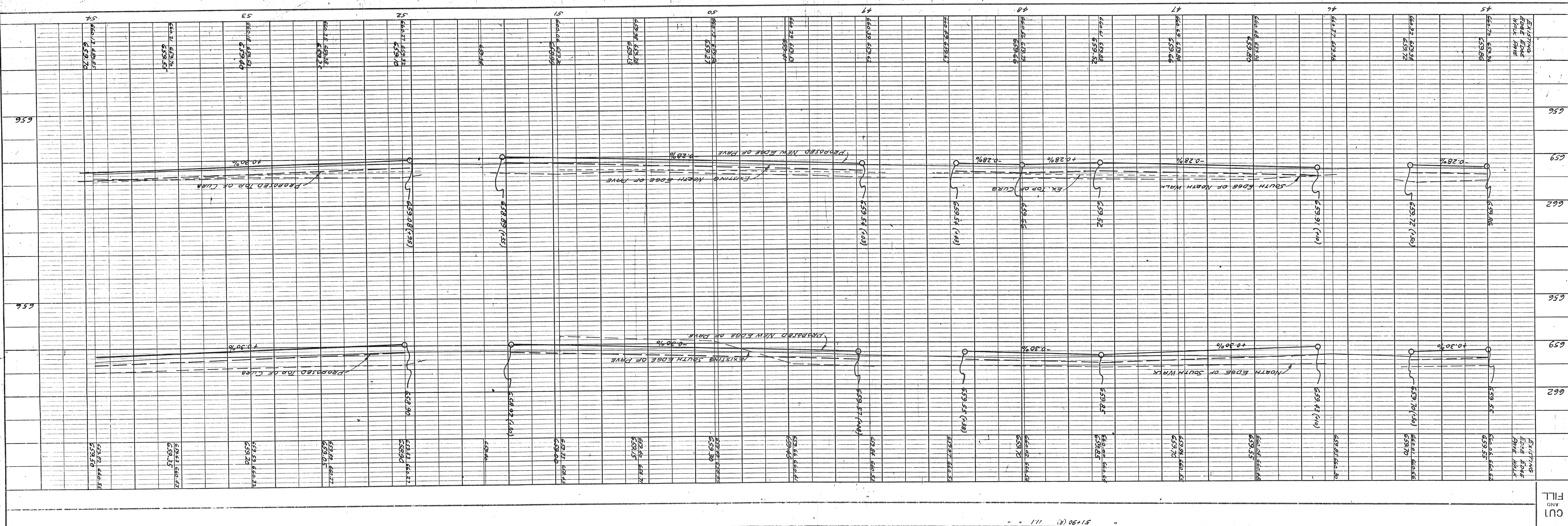
FIVE MILE ROAD

NOTE: TO OBTAIN WAYNE COUNTY DATUM ADD 0.545'
ELEVATION CITY DATUM - 657.625
(ELEVATION CITY DATUM - 117.872)
N.W. CORNER WYOMING & FIVE MILE
DETROIT CITY B.M. #90253
DET. ON HYDRANT AT THE
S.W. CORNER OF LENE & FIVE MILE

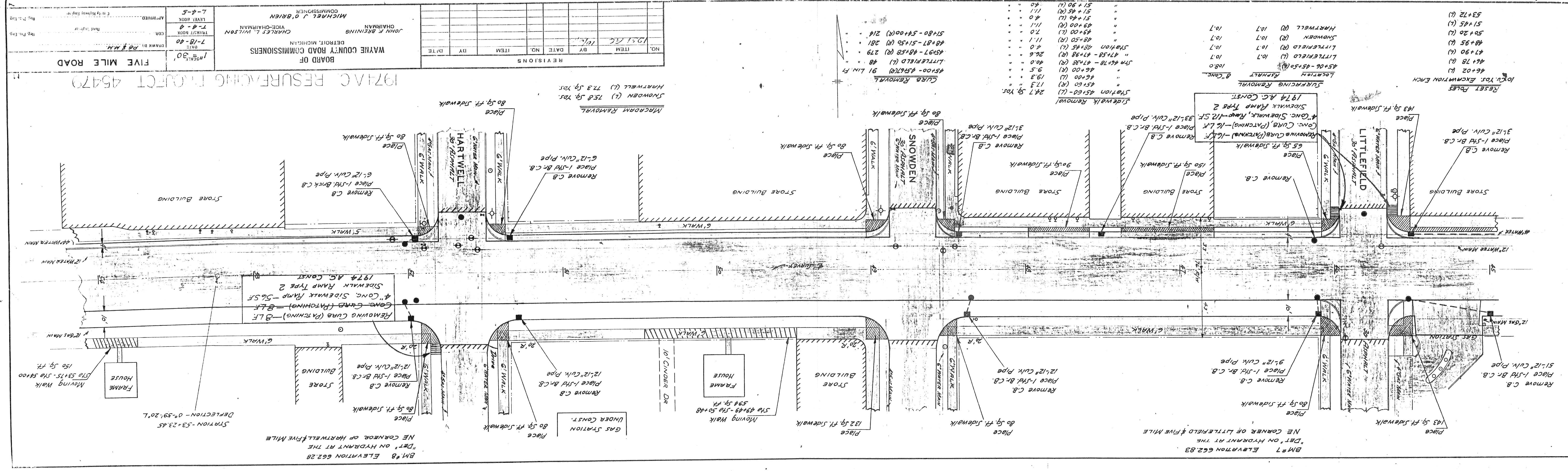
PROFILE	DATE
SURVEYED	
PLOTTED	
GRADES CHECKED	
NOTE BOOK	
NO.	
STRUCTURE NOTATIONS CH.NO.	

PLAN	DATE
SURVEYED	
ALIGNED CHECKED	
NOTE BOOK	
NO.	
ST. OF WAY CHECKED	





PROFILE	DATE	BY
SURVEYED		
NOTE BOOK		
STRUCTURE NOTINGS CH.X.O.		



NO.	ITEM	DATE	BY	DATE	BY	D/TE
1	1974 AC					

REVISIONS

BOARD OF WAYNE COUNTY ROAD COMMISSIONERS
CHAIRMAN: JOHN F. BERING
VICE-CHAIRMAN: CHARLES L. WILSON
COMMISSIONER: MICHAEL J. O'BRIEN

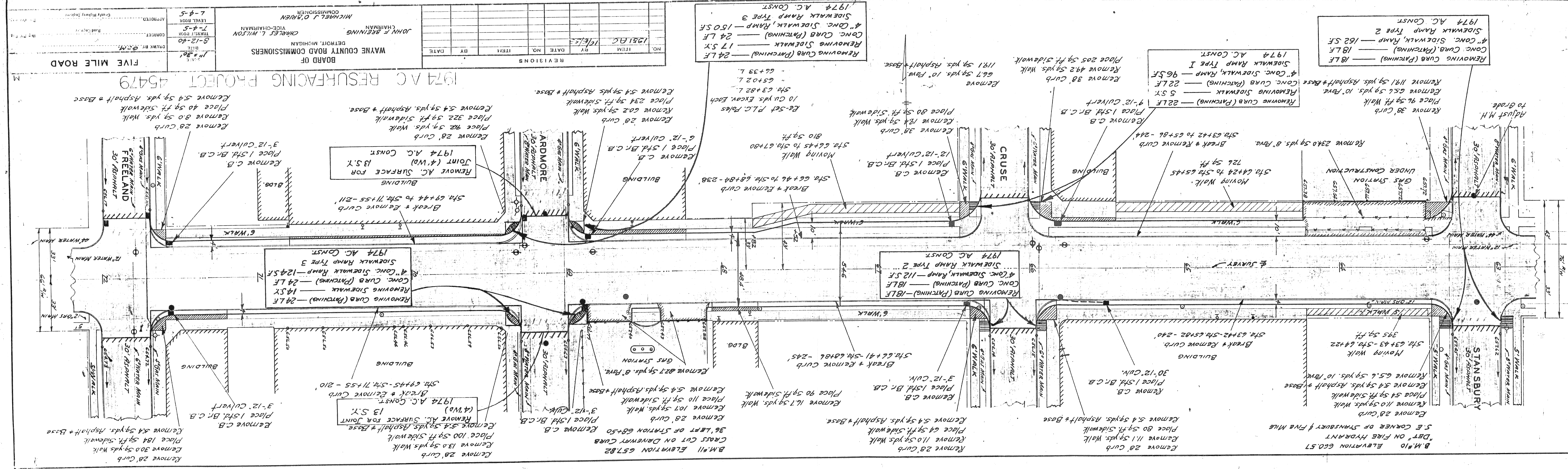
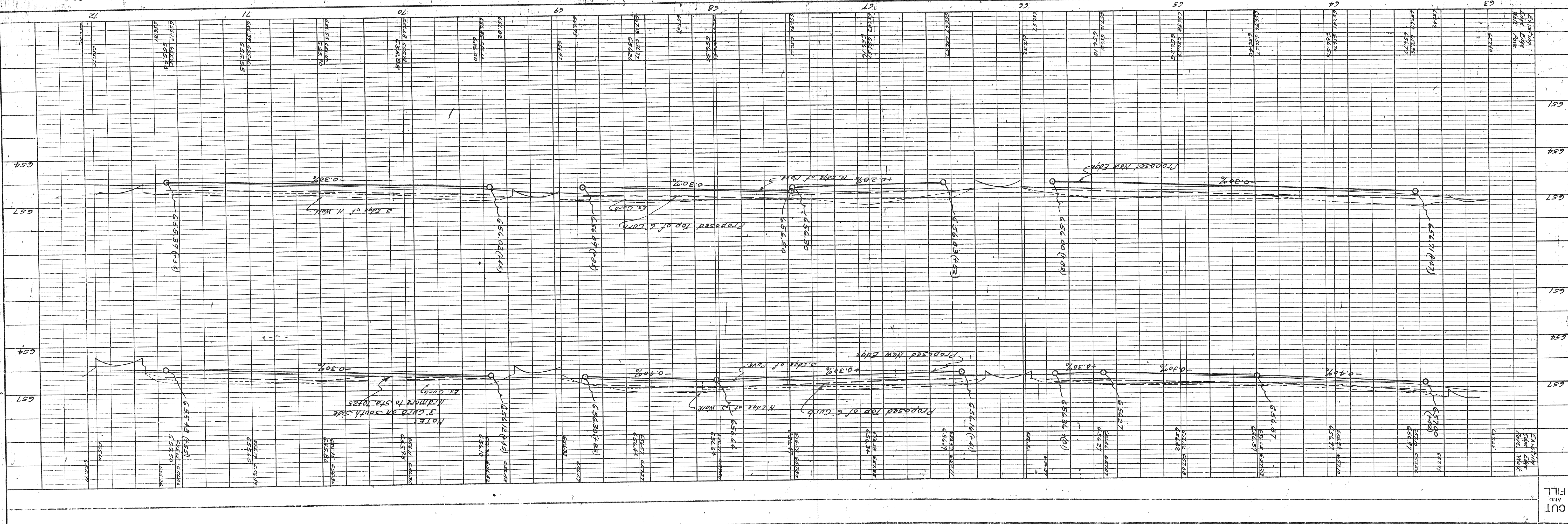
1974 AC RESURFACING PROJECT 45470
FIVE MILE ROAD

DATE: 7-13-80
DRAWN BY: P.B. & M.M.
CHECKED BY: J.P. & M.M.
APPROVED BY: J.P. & M.M.
LEVEL BOOK: 7-4-80
LEVEL POINT: 7-4-5

PLAN	DATE	BY
SURVEYED		
ALIGNMENT CHECKED		
RT. OF WAY CHECKED		

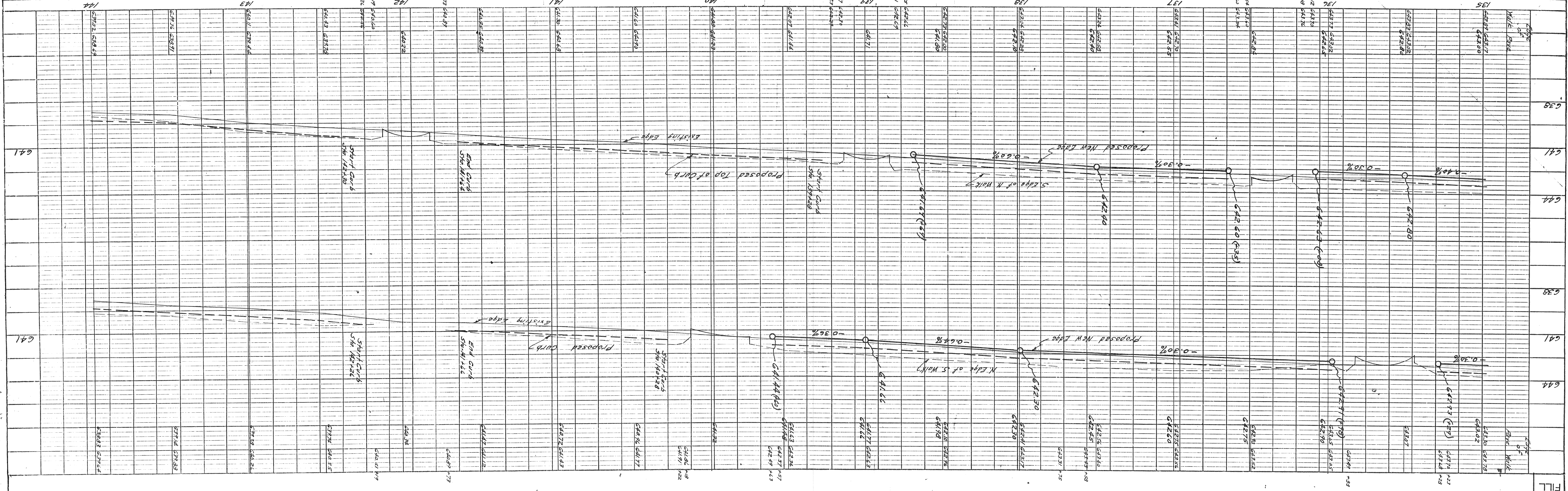
PROFILE		DATE
STARTED		
COMPLETED		
NOTE BOOK		
NO.		
STRUCTURE		

PLAN		DATE
STARTED		
COMPLETED		
NOTE BOOK		
NO.		
STRUCTURE		



PROFILE	SUBMITTED	DATE
NOTE BOOK	PLOTTED & CHECKED	
NO.	BY M.S. NORTH	
	STRUCTURE NOTATIONS CH.K.	

PLAN	SUBMITTED	DATE
NOTE BOOK	PLOTTED & CHECKED	
NO.	BY M.S. NORTH	
	STRUCTURE NOTATIONS CH.K.	

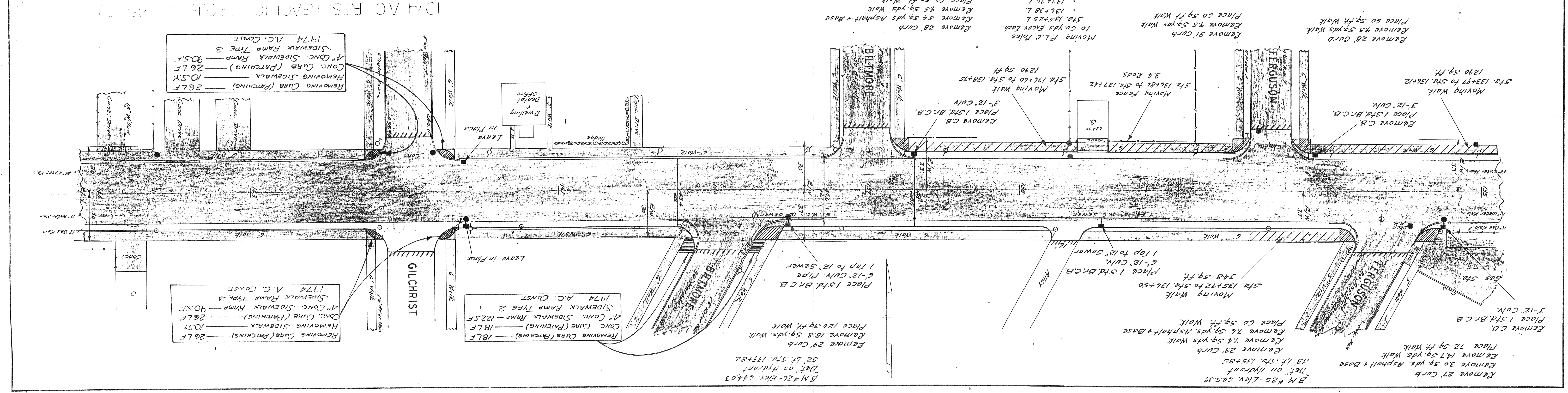


FILL AND CUT

NO.	ITEM	BY	DATE	NO.	DATE	BY	DATE
1	AS NOTED	M.S.	12/1/53				

CHAIRMAN	VICE-CHAIRMAN
BOARD OF WAYNE COUNTY ROAD COMMISSIONERS	
DETROIT, MICHIGAN	

APPROVED	County Highway Engineer
7-4-5	Level Book
7-4-5	TRANSIT BOOK
1-8-51	DATE
1-30	SCALE



1974 A.C. CONST.
 1974 A.C. CONST.
 1974 A.C. CONST.

1974 A.C. CONST.
 1974 A.C. CONST.
 1974 A.C. CONST.

Remove 27' curb
 Remove 14.7 sq. yds. Walk
 Remove 30 sq. yds. Asphalt + Base
 Det. on Hydrant
 B.M. #25 - Elev. 445.39

Remove 23' curb
 Remove 74 sq. yds. Walk
 Remove 76 sq. yds. Asphalt + Base
 Place 60 sq. ft. Walk

Remove 29' curb
 Remove 18.8 sq. yds. Walk
 Place 120 sq. ft. Walk

Remove 28' curb
 Remove 9.5 sq. yds. Asphalt + Base
 Remove 9.5 sq. yds. Walk
 Place 60 sq. ft. Walk

Remove 31' curb
 Remove 9.5 sq. yds. Walk
 Place 60 sq. ft. Walk

Remove 28' curb
 Remove 9.5 sq. yds. Walk
 Place 60 sq. ft. Walk

Remove 28' curb
 Remove 9.5 sq. yds. Walk
 Place 60 sq. ft. Walk

Remove 27' curb
 Remove 14.7 sq. yds. Walk
 Remove 30 sq. yds. Asphalt + Base
 Det. on Hydrant
 B.M. #25 - Elev. 445.39

