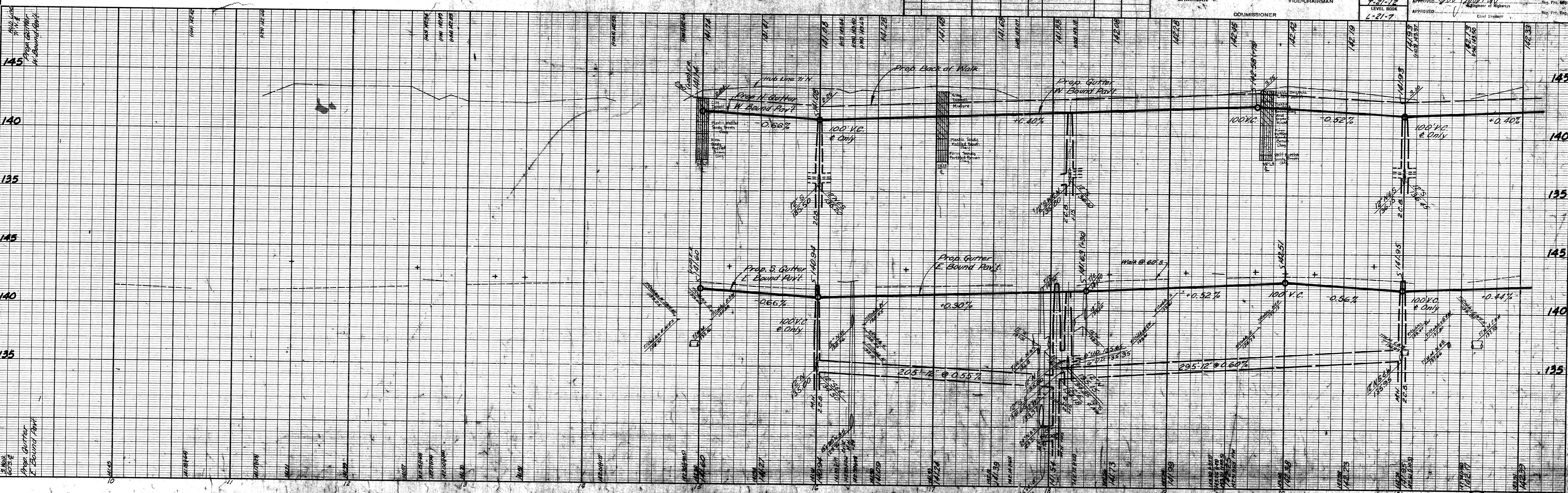
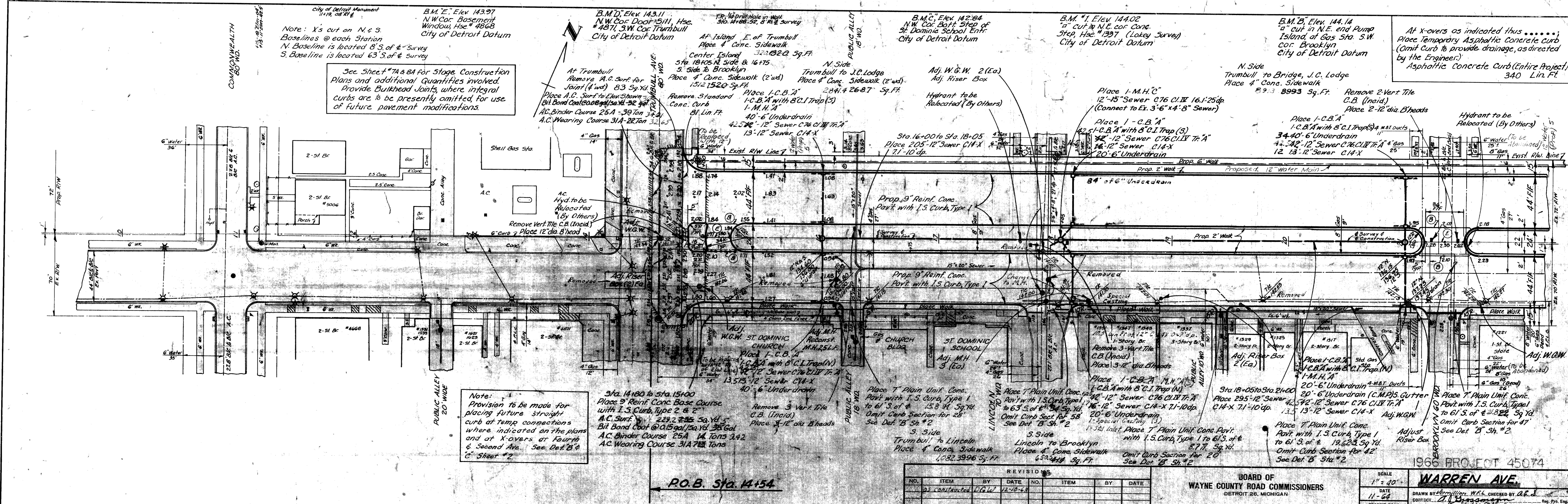


DATE	12/1/64	
BY	LD/20/1964	
PLAN	SURVEYED	
	PLOTTED	
	ALIGNED	
	CHECKED	
	BY	W.T.Z.
	DATE	12/1/64

DATE		
BY		
PROFILE	SURVEYED	
	PLOTTED	
	GRADES	CHECKED
	BY	B.S.
	DATE	12/1/64



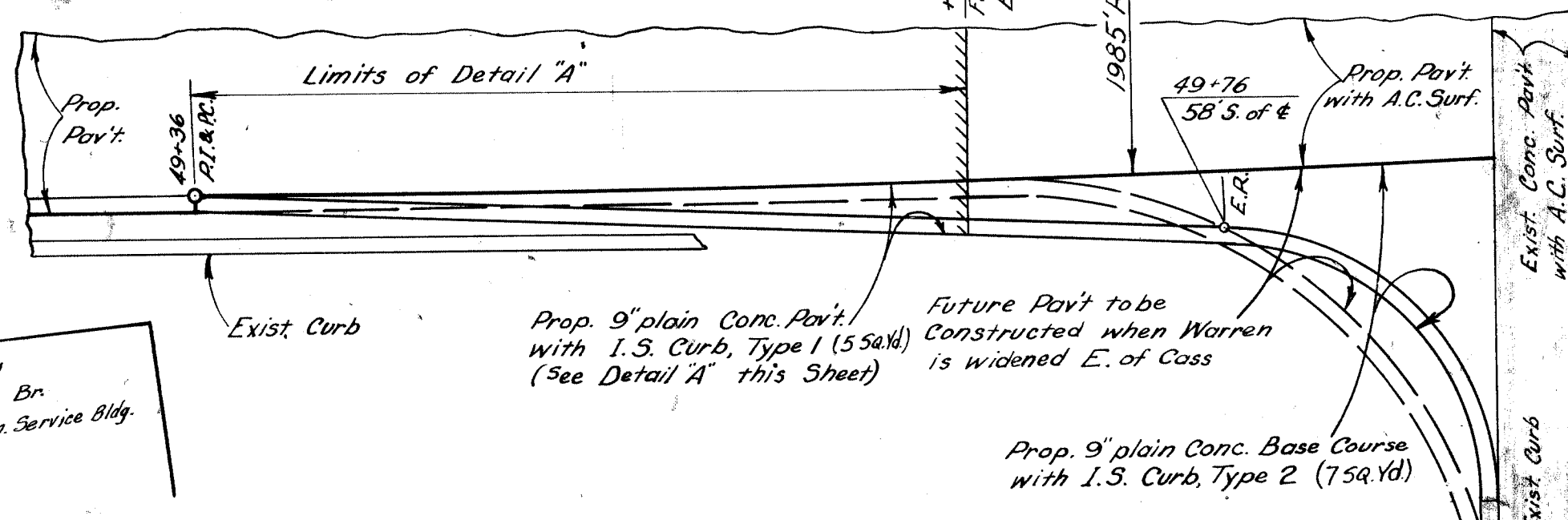
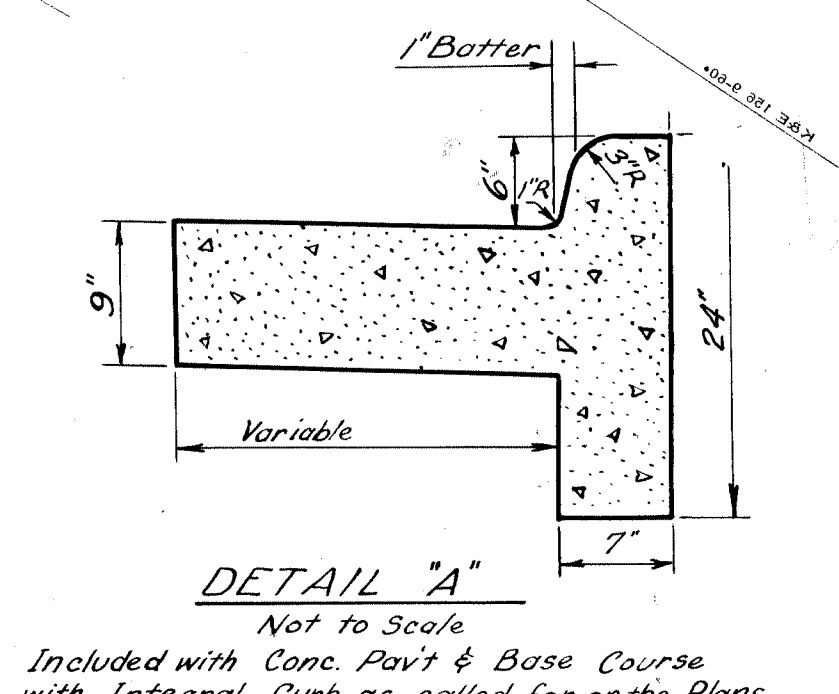
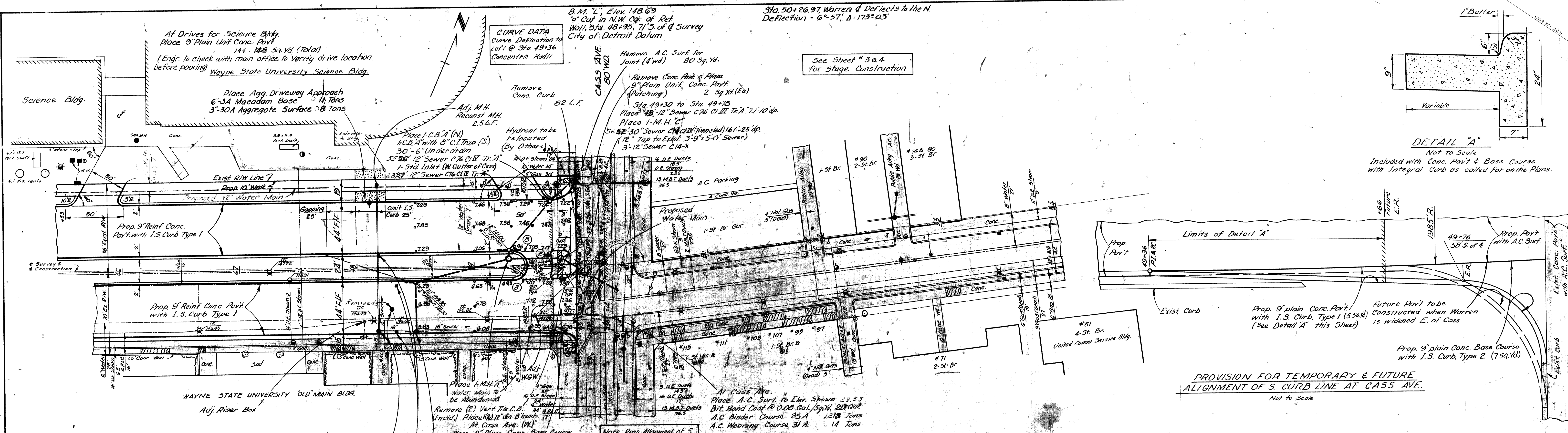
1966 PROJECT 45074
WARREN AVE.

REVISIONS					
NO.	ITEM	BY	DATE	NO.	ITEM
1	Consistent	LD/12/12	12-10-64		

BOARD OF WAYNE COUNTY ROAD COMMISSIONERS
 DETROIT 26, MICHIGAN
 CHAIRMAN: _____
 COMMISSIONER: _____
 VICE-CHAIRMAN: _____

SCALE: 1" = 40'
 DATE: 11-64
 DRAWN BY: J. M. HALL, CHECKED BY: A. E. S.
 TRANSPORTATION ENGINEERING
 APPROVED: _____
 L-27-7

PLAN	SURVEYED	BY	DATE
	PLOTTED		
	NOTE BOOK		
	ALIGNMENT CHECKED		
	RT. OF WAY CHECKED		



At Center Island
Second to Cass
Place 4' Conc. Walk (2'wd)
2,33.2 2132 Sq. Ft.

At Center Island W of Cass
Place 4' Conc. Sidewalk
347.3 320 Sq. Ft.

Adj. M.H. (2) Ea.
Remove (3) Vert. Tile C.B. (Inc'd)
Provide (3) 12" dia. B'heads
Place 1'-C.B.' w/ 8" C.I. Trap (N)
10'-6" Underdrain
42'-12" Sewer C76 C.I.W. Tr. 7"
82' 83'-12" Sewer C14-X 7'-10" dp.

Remove (3) Vert. Tile C.B. (Inc'd)
Provide (3) 12" dia. B'heads
Place 1'-C.B.' w/ 8" C.I. Trap (N)
10'-6" Underdrain
42'-12" Sewer C76 C.I.W. Tr. 7"
82' 83'-12" Sewer C14-X 7'-10" dp.

At Cass Ave. (W)
Place 9' Plain Conc. Base Course with 1.3 Curb, Type 2 7.59 Yd.
and 9' Rein. Conc. Base Course with 1.5 Curb, Type 2, 233 Sq. Yd. & 2" A.C. Surf.
Bit. Bond Coat @ 0.15 Gal./Sq. Yd. 38 Gal.
A.C. Binder Course 25A 1288 Tons
A.C. Wearing Course 31A 14 Tons

At Cass Ave.
Place A.C. Surf to Elev. Shown 24.53
Bit. Bond Coat @ 0.08 Gal./Sq. Yd. 288 Gal.
A.C. Binder Course 25A 1288 Tons
A.C. Wearing Course 31A 14 Tons

Note: Prop. Alignment of S. Curb Shall meet Exist. Alignment at End of Radius. See Detail this Sheet.

REVISIONS							
NO.	ITEM	BY	DATE	NO.	ITEM	BY	DATE
1	As Constructed	DGW	12-10-65				

BOARD OF WAYNE COUNTY ROAD COMMISSIONERS
DETROIT 26, MICHIGAN

CHAIRMAN _____ VICE-CHAIRMAN _____

COMMISSIONER _____

WARREN AVE.

SCALE 1" = 40'

DATE Jan. 1966

TRANSIT BOOK 7-21-13

LEVEL BOOK L-21-B

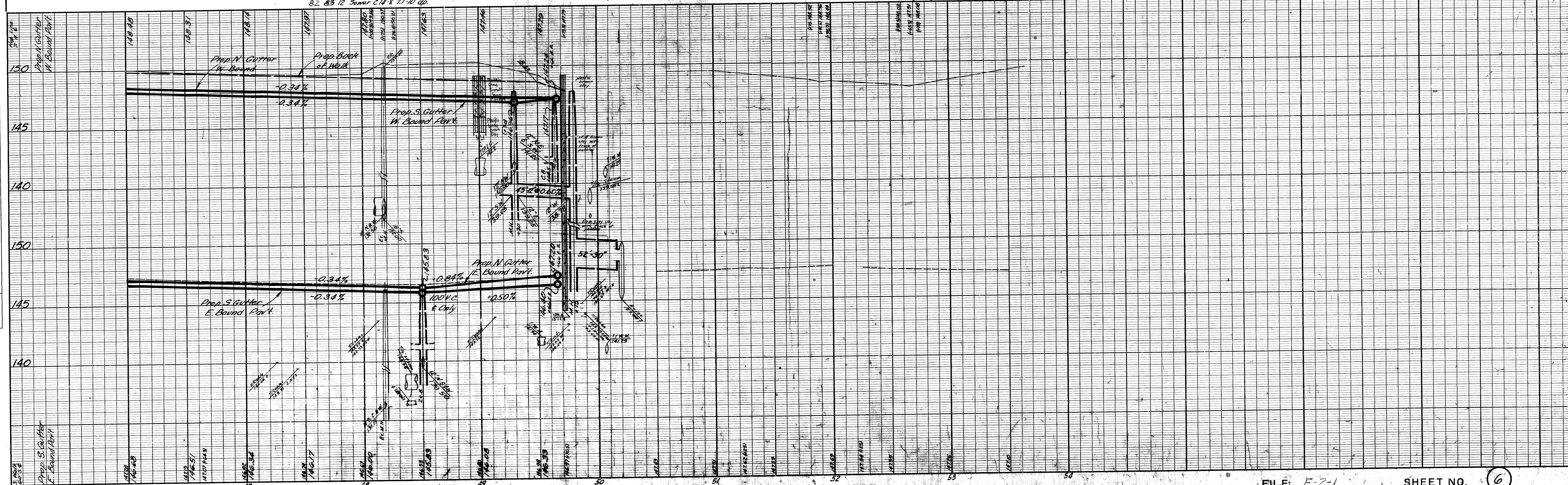
DRAWN BY W. E. ... CHECKED BY ...

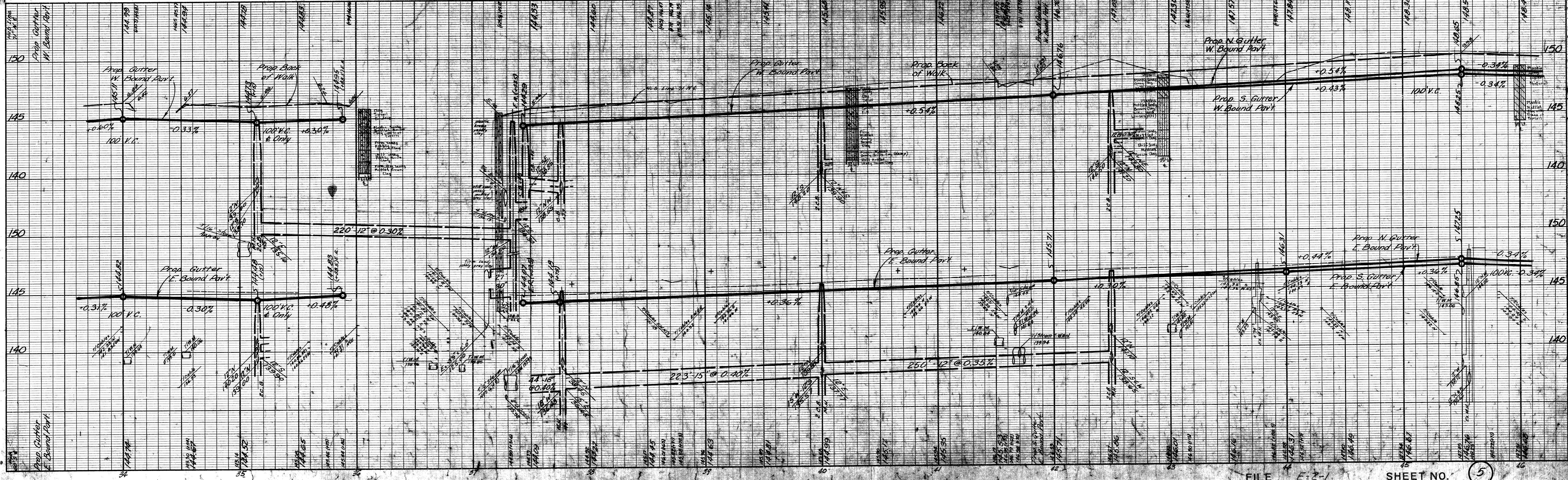
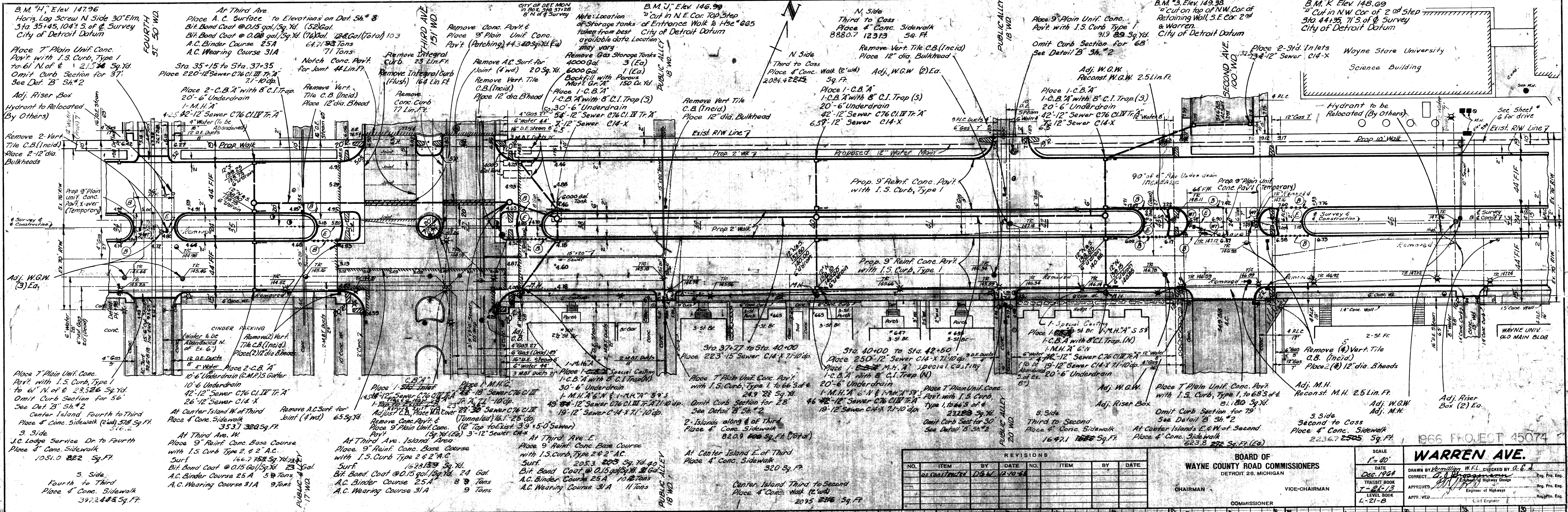
CORRECT ... Reg. Prof. Eng.

APPROVED ... Reg. Prof. Eng.

APPROVED ... Chief Engineer

PROFILE	SURVEYED	BY	DATE
	PLOTTED		
	NOTE BOOK		
	STRUCTURE NOTES CHKD		





DATE: 12-10-66
 BY: J. B. [unclear]
 CHECKED: [unclear]
 IN CHARGE: [unclear]

PLAN: SURVEYED, REVISIONS, NOTE BOOK, ALIGNED, CHECKED, INT. OF WAY, CHECKED, IN CHARGE

DATE: [unclear]
 BY: [unclear]
 CHECKED: [unclear]
 IN CHARGE: [unclear]

PROFILE: SURVEYED, REVISIONS, NOTE BOOK, GRADES, CHECKED, B.M.'S, NOTED, STRUCTURE, NOTATIONS, CHECKED

REVISIONS			
NO.	ITEM	BY	DATE
1	as constructed	D.B.W.	12-10-66

BOARD OF WAYNE COUNTY ROAD COMMISSIONERS	
DETROIT 26, MICHIGAN	
CHAIRMAN	VICE-CHAIRMAN
COMMISSIONER	

SCALE: 1" = 40'

DATE: Dec. 1966

TRIALS BOOK: T-21-13

LEVEL BOOK: L-21-6

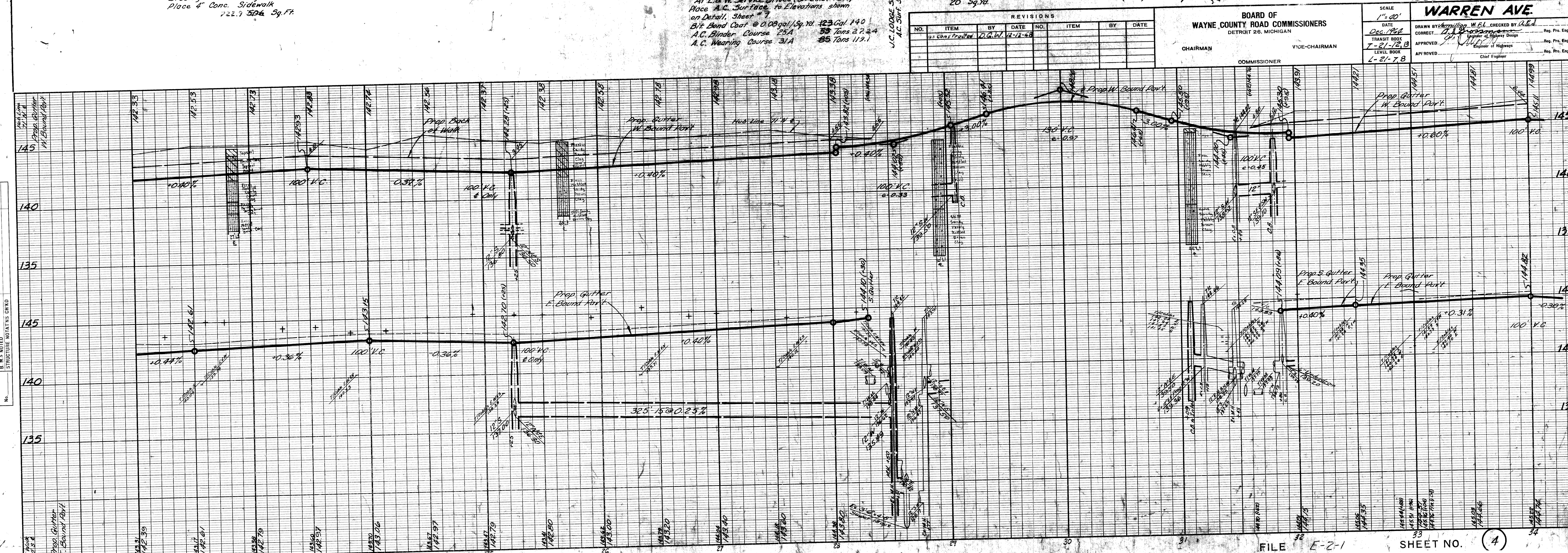
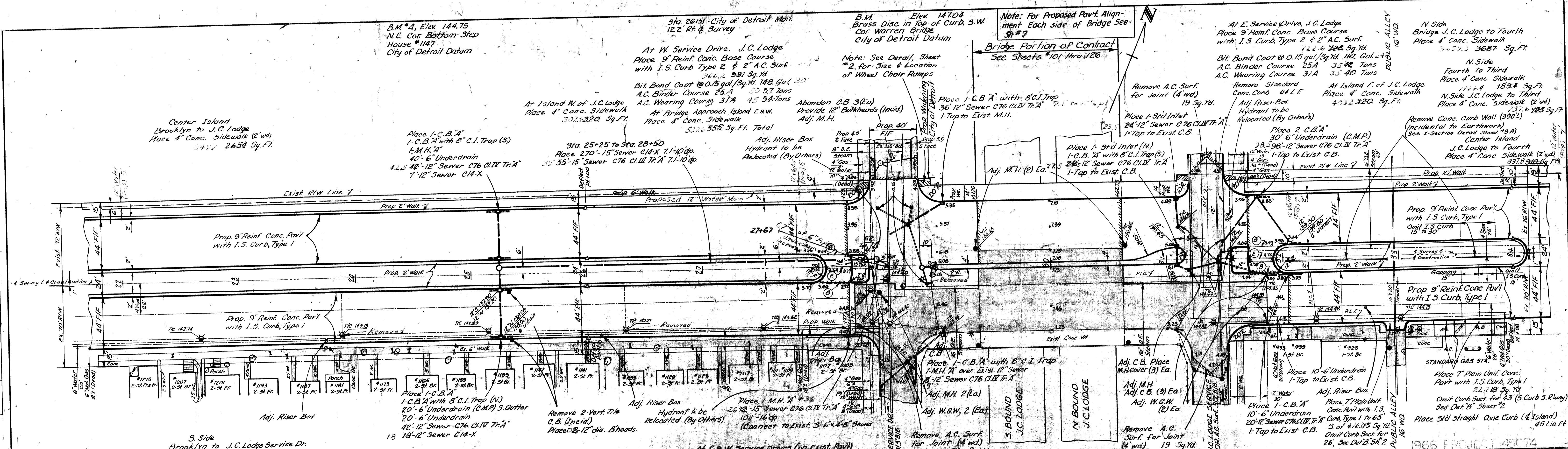
APPROVED: [Signature]

WARREN AVE.

1966 PROJECT 45074

PLAN	SURVEYED	DATE
PLOTTED		
GRADES CHECKED		
STRUCTURE NOTATIONS CHECKED		
BY		
DATE		

PROFILE	SURVEYED	DATE
PLOTTED		
GRADES CHECKED		
STRUCTURE NOTATIONS CHECKED		
BY		
DATE		



REVISIONS			
NO.	ITEM	BY	DATE
1	Cons. Traced	D.S.W.	12-12-68

BOARD OF WAYNE COUNTY ROAD COMMISSIONERS
 DETROIT 26, MICHIGAN
 CHAIRMAN: _____
 VICE-CHAIRMAN: _____
 COMMISSIONER: _____

SCALE: 1" = 40'
 DATE: Dec. 1968
 CORRECTED BY: _____
 TRANSPORTED BY: _____
 APPROVED BY: _____
 LEVEL BOOK: _____
 APPROVED BY: _____