

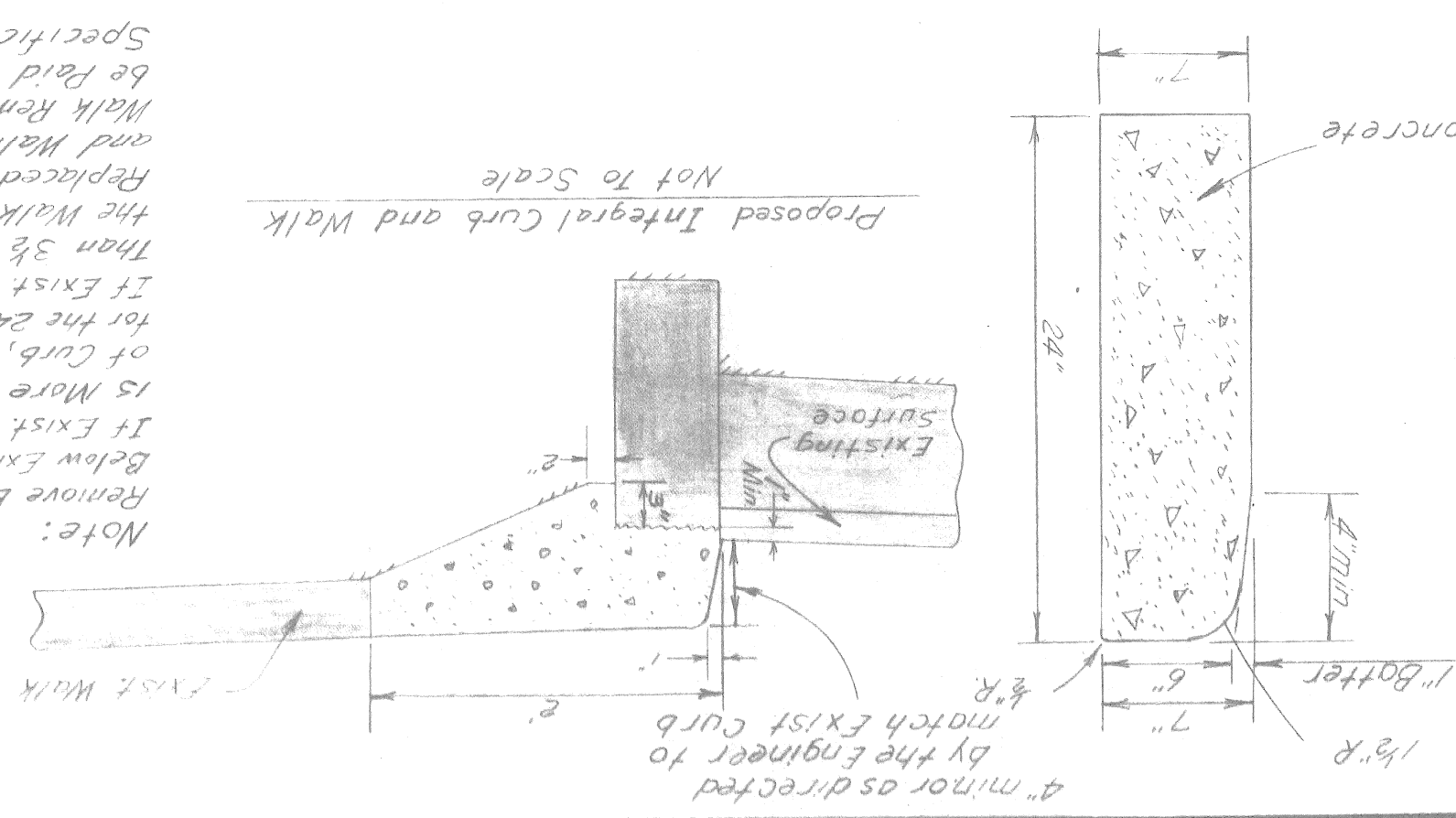
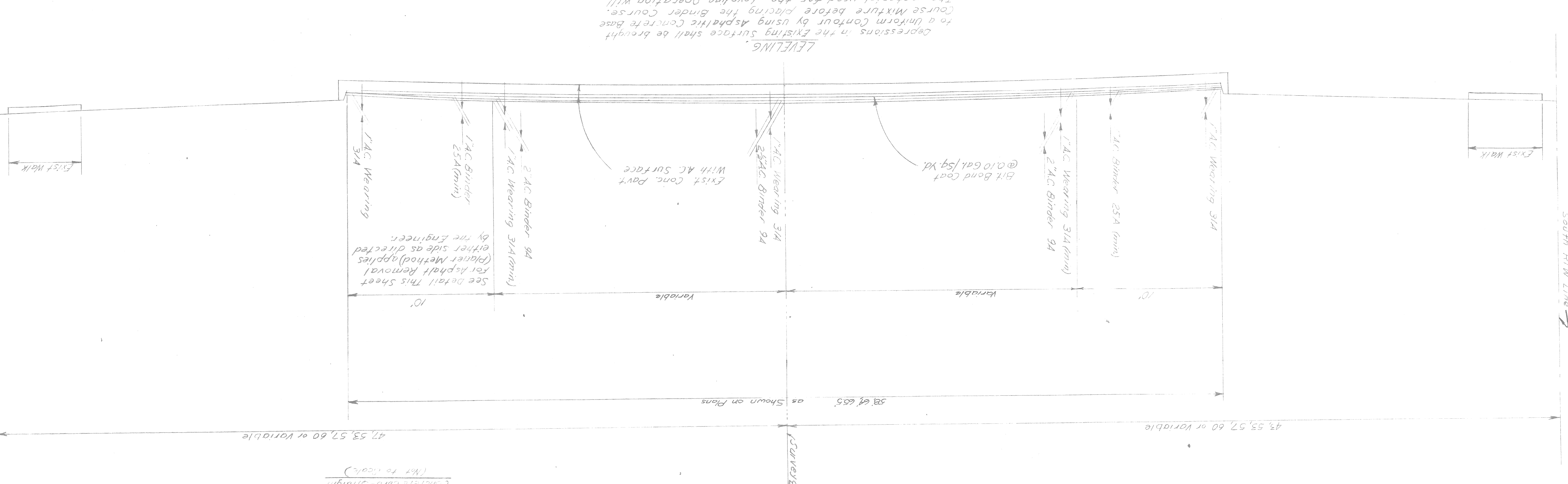
APPROVED: [Signature]
 ASSISTANT ENGINEER
 CORRECT: [Signature]
 1971 PROJ 44391A

GENERAL NOTES
 The location of all Public Utilities shown on these plans is taken from the best available data. The Board of Wayne County Road Commissioners will not be responsible for any omissions or variations from the locations shown.
 The Adjustment and Reconstruction of Utility Structures not indicated on the plan will be performed by the Utility Owners.
 Any existing castings damaged by the Contractor in the course of work shall be replaced by the Contractor at his own expense.
 Transit Mix Concrete may be used.

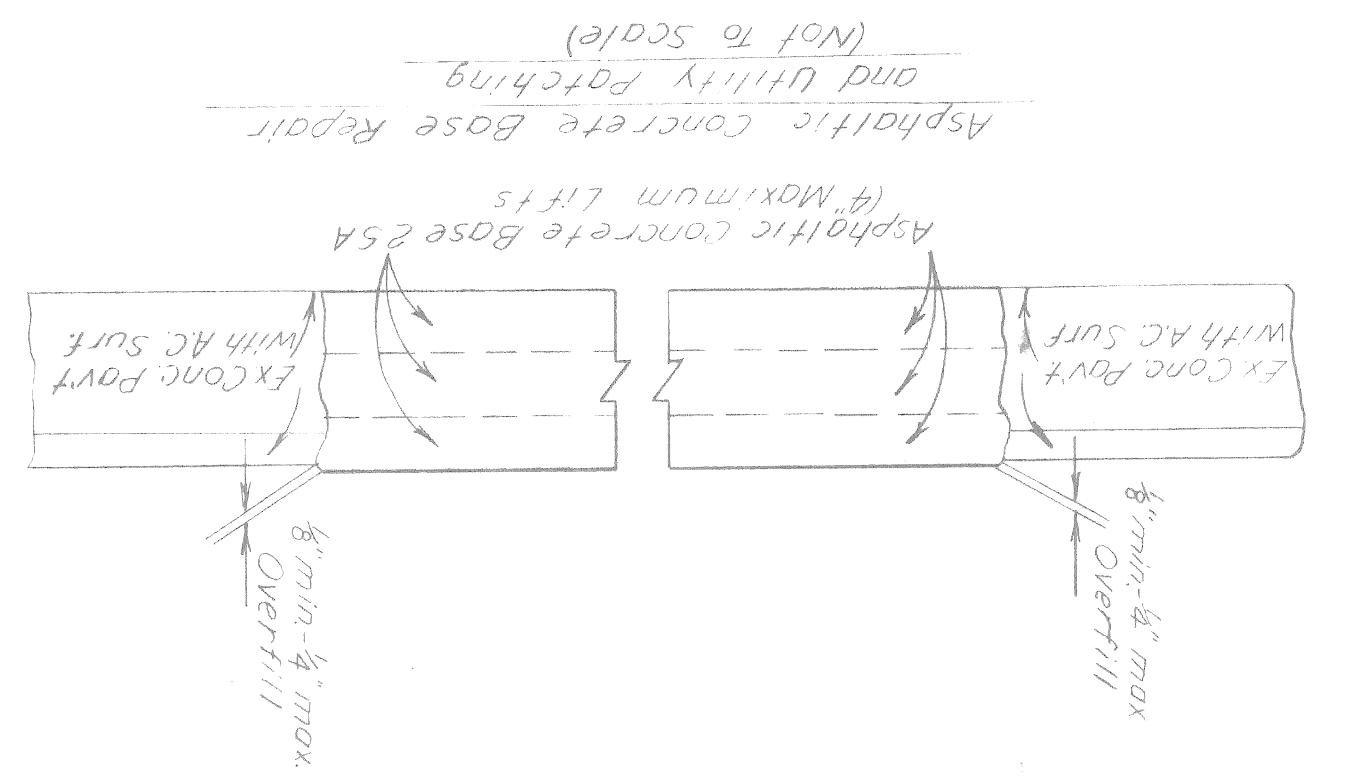
TYPICAL CROSS-SECTION

SEVEN MILE ROAD
 MEYERS ROAD TO SOUTHFIELD FREEWAY

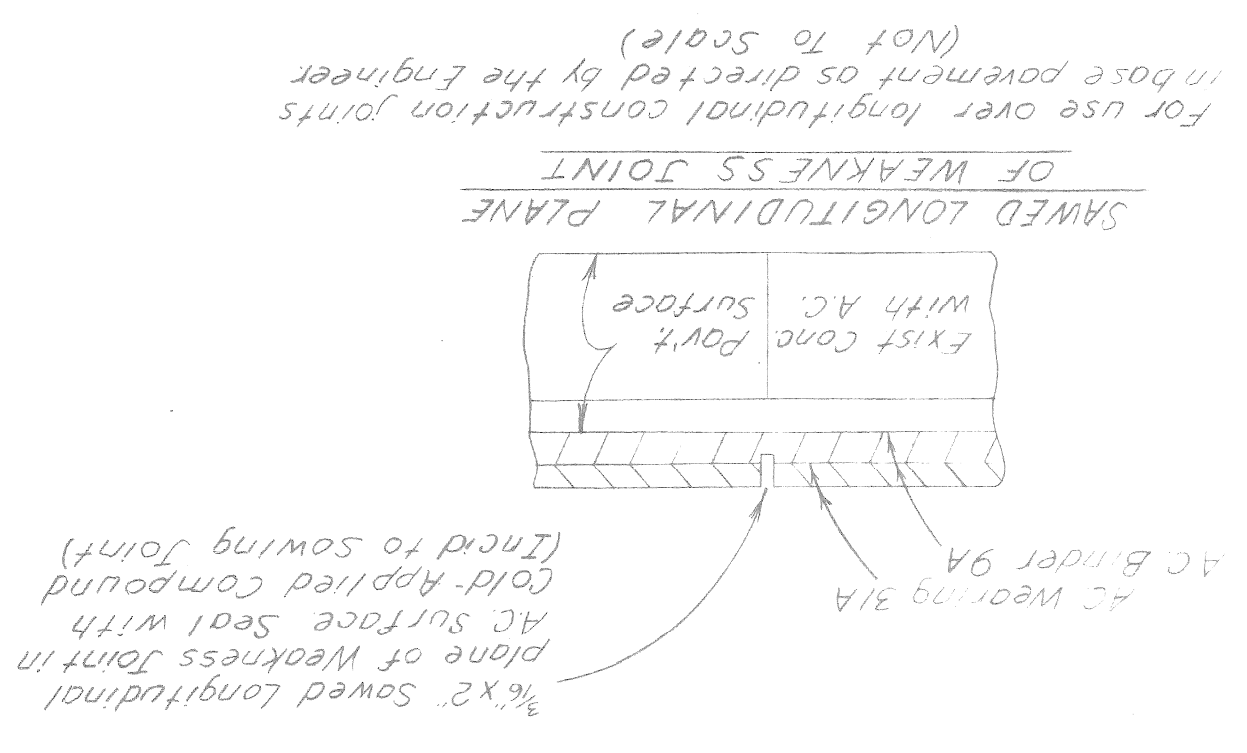
SCALE 1"=4'



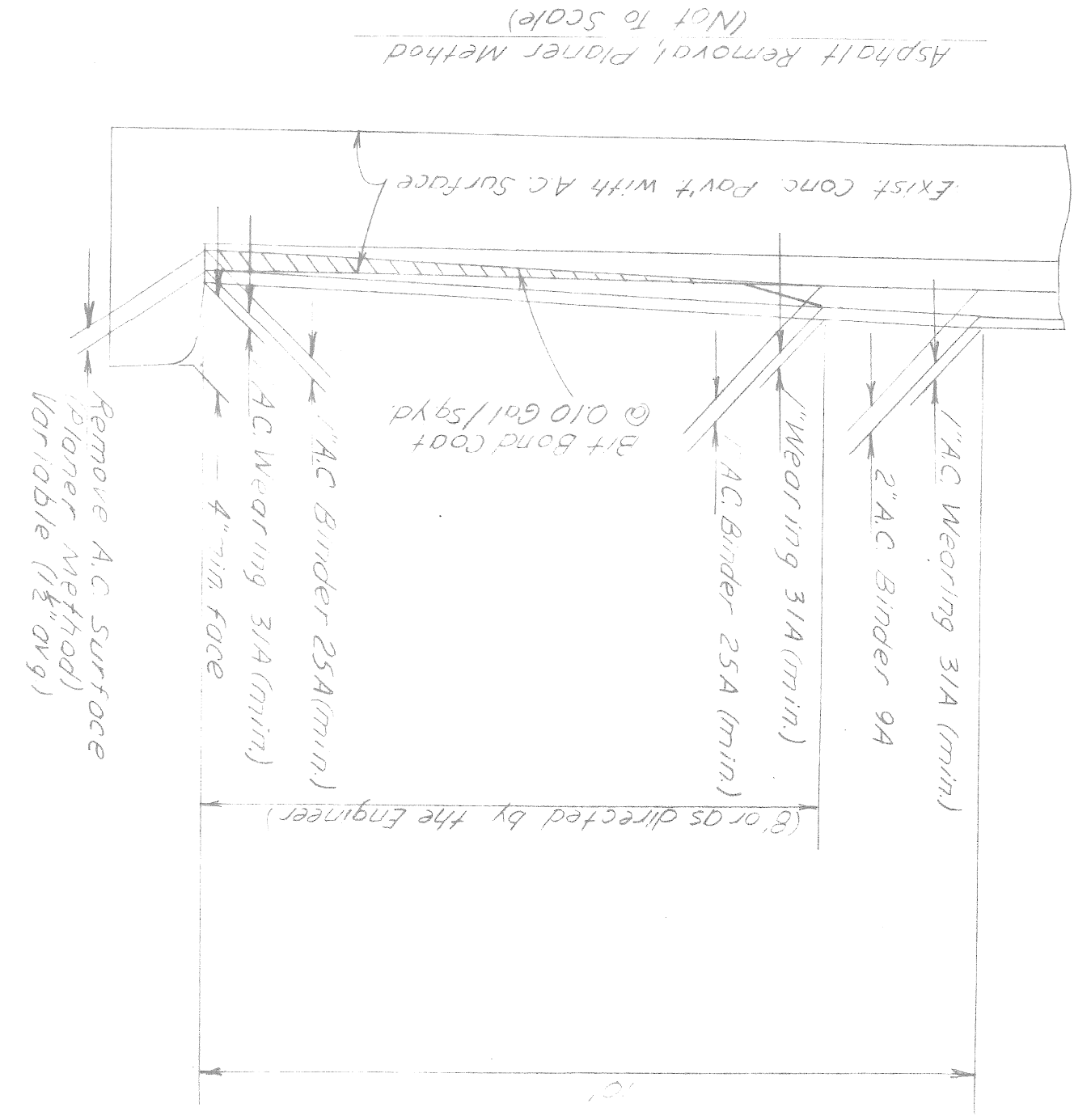
Note:
 Remove Existing Pavement to Minimum of 1\"/>



Asphaltic Concrete Base Repair
 and Utility Patching
 (Not to Scale)



SAWED LONGITUDINAL PLANE OF WEAKNESS JOINT
 For use over longitudinal construction joints in base pavement as directed by the Engineer (Not to Scale)



Asphalt Removal, Plover Method
 (Not to Scale)

SEVEN MILE ROAD
DATE 3-14-69
DRAWN BY G.M.L.M.
CHECKED BY Z.K.R.

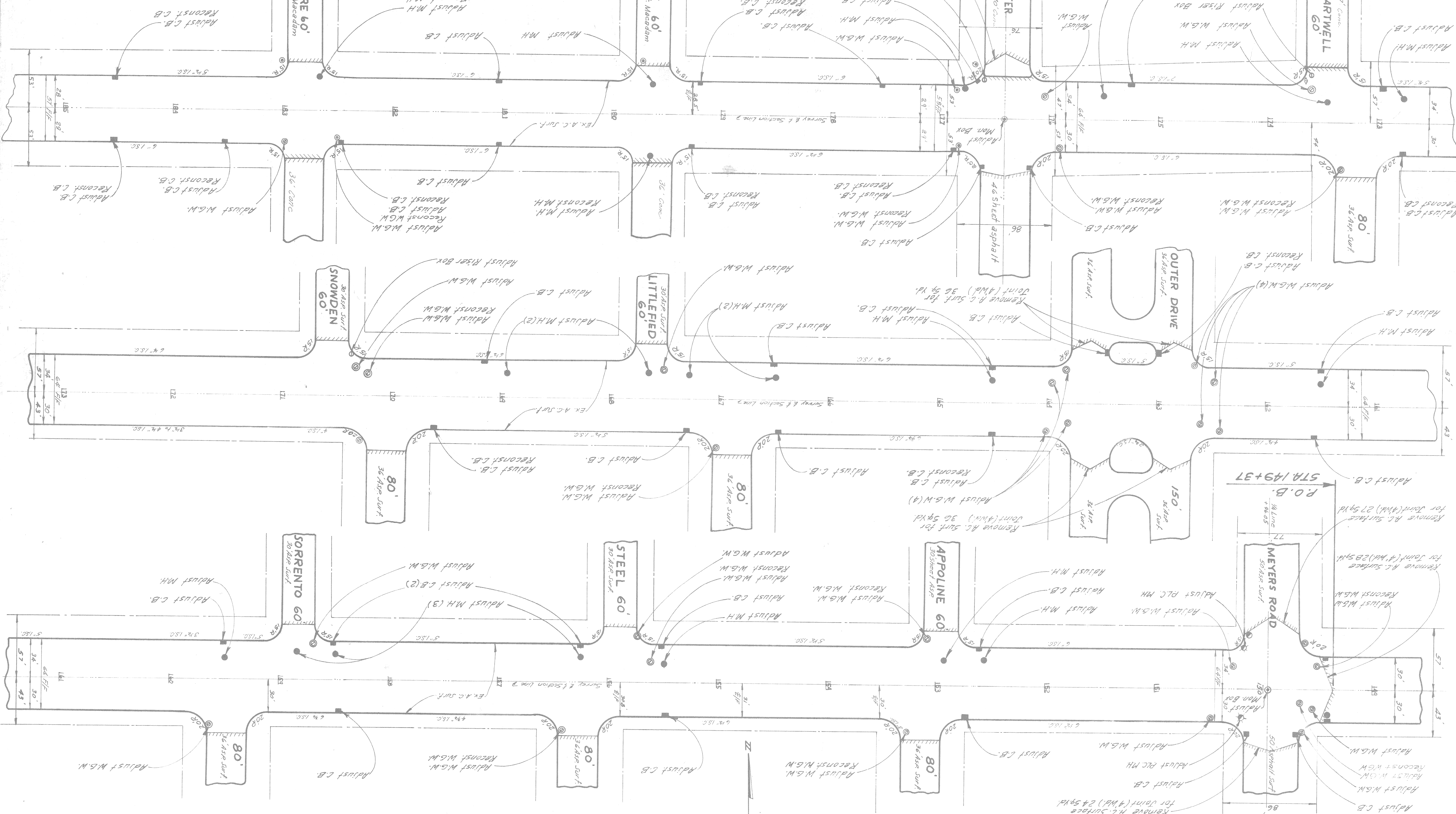
SCALE 1" = 40'

BOARD OF
WAYNE COUNTY ROAD COMMISSIONERS
DETROIT 39, MICHIGAN

NO.	ITEM	BY	DATE	NO.	ITEM	BY	DATE

REVISIONS

Note: Topo Taken from Previous Plans



Note: Eight Manhole Castings and Eight Catch Basin Castings Have Been Provided to be Used as Directed by The Engineer. Seventy Five New Water Gate Wall Frames and Covers are Available for Replacement. See Supplemental Specification.

Notch 50m. Pavt. for Joint (4' Wd.) 50 sq. ft.

Remove R.C. Surf. for Joint (4' Wd.) 36 Sq. Yd.

Remove R.C. Surf. for Joint (4' Wd.) 36 Sq. Yd.

Remove R.C. Surface for Joint (4' Wd.) 27 Sq. Yd.

Remove R.C. Surface for Joint (4' Wd.) 28 Sq. Yd.

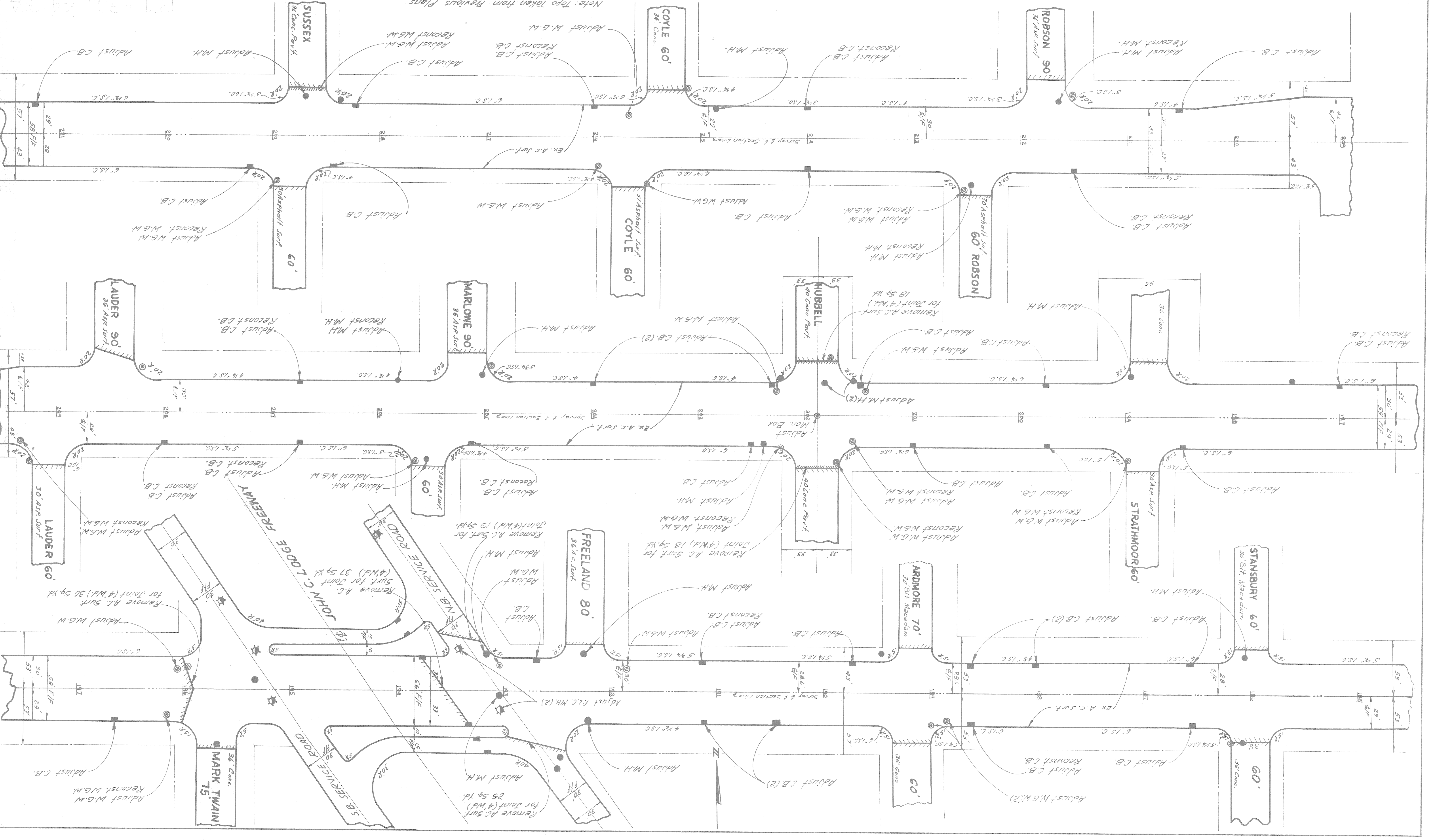
Remove R.C. Surface for Joint (4' Wd.) 24 Sq. Yd.

SEVEN MILE ROAD
 SCALE 1" = 40'
 DATE 3-18-69
 DRAWN BY Z.K.
 CHECKED BY Z.K.D.
 APPROVED [Signature]
 ENGINEER OF HIGHWAY DESIGN
 TRANSPORTATION DIVISION
 CORRECTED [Signature]
 ENGINEER OF HIGHWAY DESIGN

BOARD OF COMMISSIONERS
 WAYNE COUNTY ROAD COMMISSIONERS
 DETROIT 26, MICHIGAN
 VICE-CHAIRMAN
 CHAIRMAN

NO.	ITEM	BY	DATE	NO.	ITEM	BY	DATE

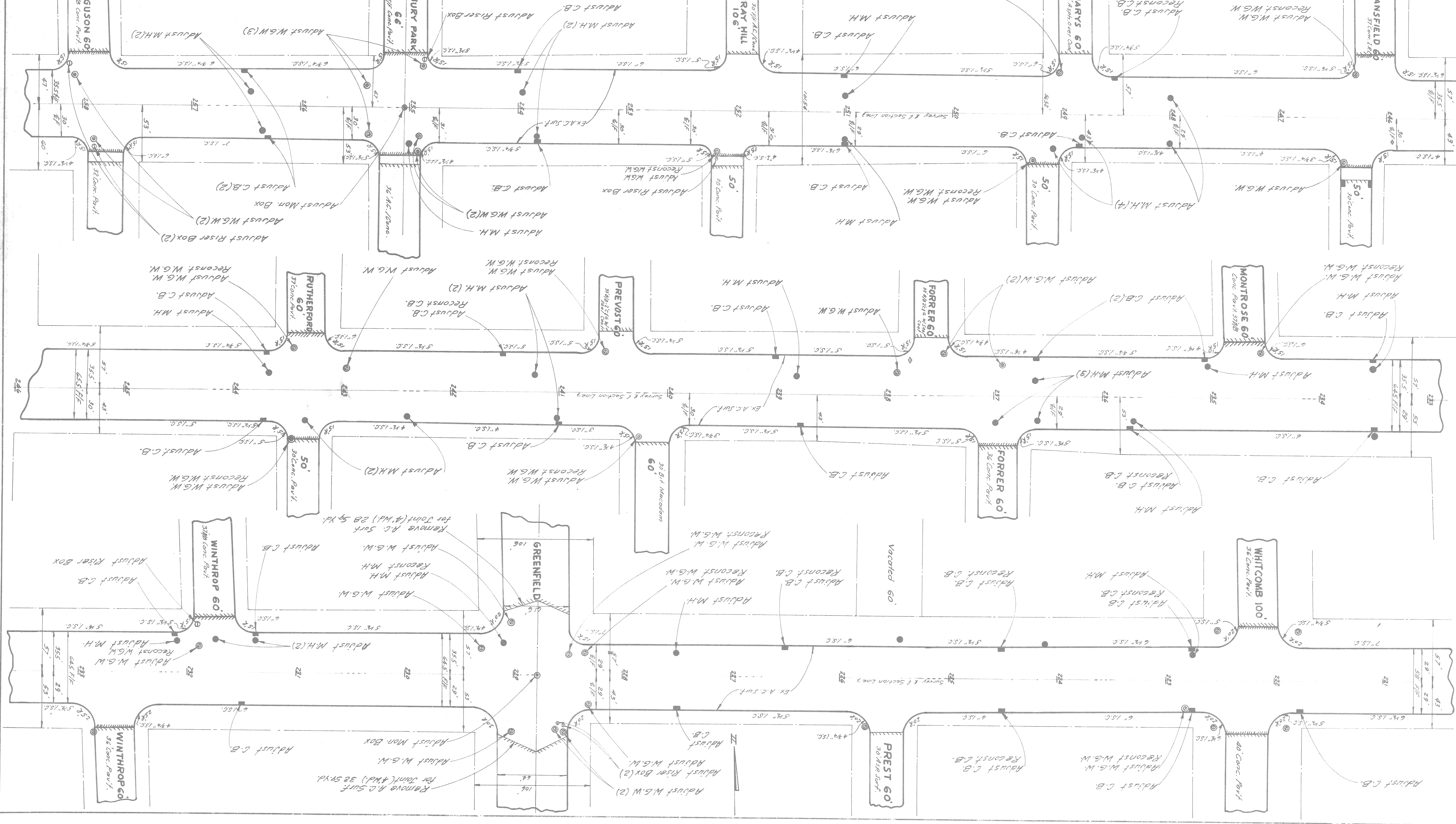
REVISIONS
 Note: Topo taken from Previous Plans



REVISIONS	NO.	DATE	BY	DATE

BOARD OF WAYNE COUNTY ROAD COMMISSIONERS
 DETROIT 28, MICHIGAN
 CHAIRMAN
 VICE-CHAIRMAN
 COMMISSIONERS

SCALE 1" = 40'
 DATE 3-21-69
 DRAWN BY Z.K.
 CHECKED BY M.S.
 APPROVED BY [Signature]
 LEVEL BOOK
 TRANSIT BOOK
 CONTRACT
 SEVEN MILE ROAD



DATE 3-25-69		DRAWN BY Z.K.A.		CHECKED BY Z.M.O.	
PROJECT 3-25-69		CONTRACT		APPROVED	
SCALE 1"=40'		LEVEL BOOK		TRANSIT BOOK	
BOARD OF WAYNE COUNTY ROAD COMMISSIONERS		CHAIRMAN		VICE-CHAIRMAN	
DETTORIT 20, MICHIGAN		COMMISSIONER			

REVISIONS

NO.	ITEM	BY	DATE

Note: Tape Taken from Previous Plans

