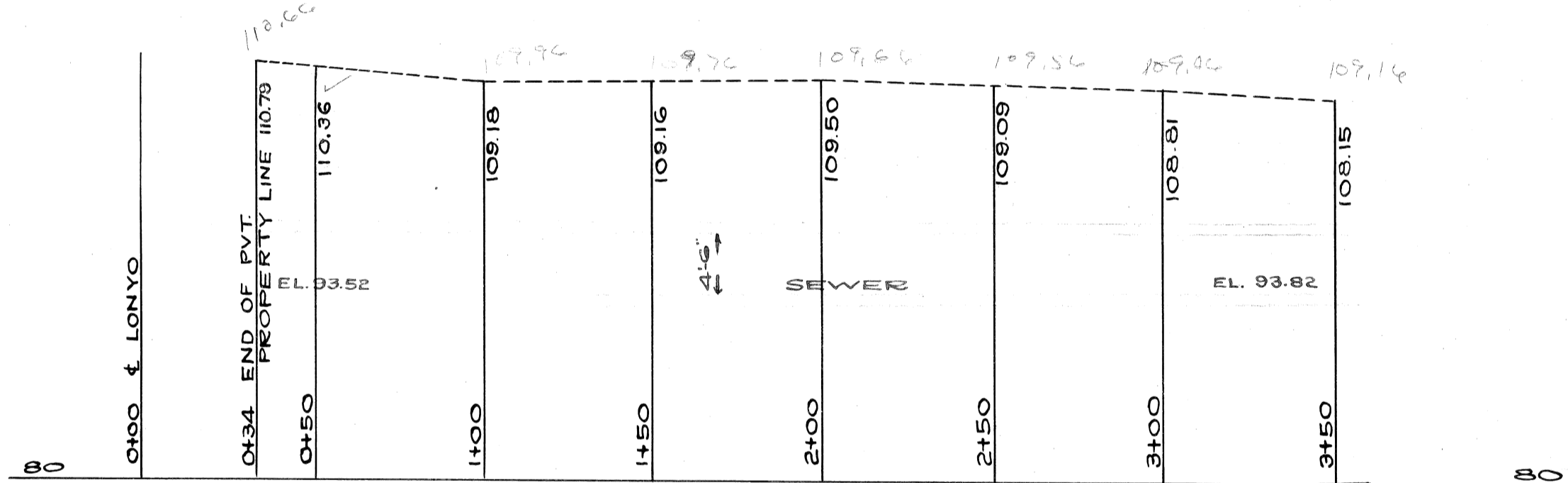
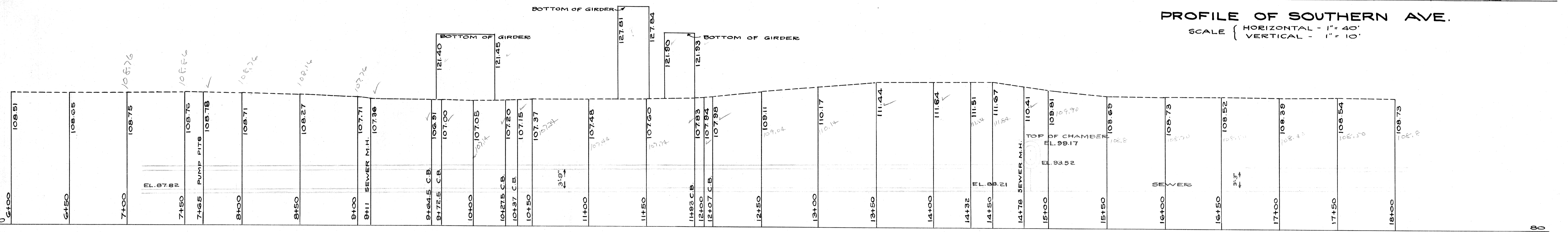


PLAN  
SCALE 1" = 40'



PROFILE OF SOUTHERN AVE.  
SCALE { HORIZONTAL - 1" = 40'  
VERTICAL - 1" = 10'

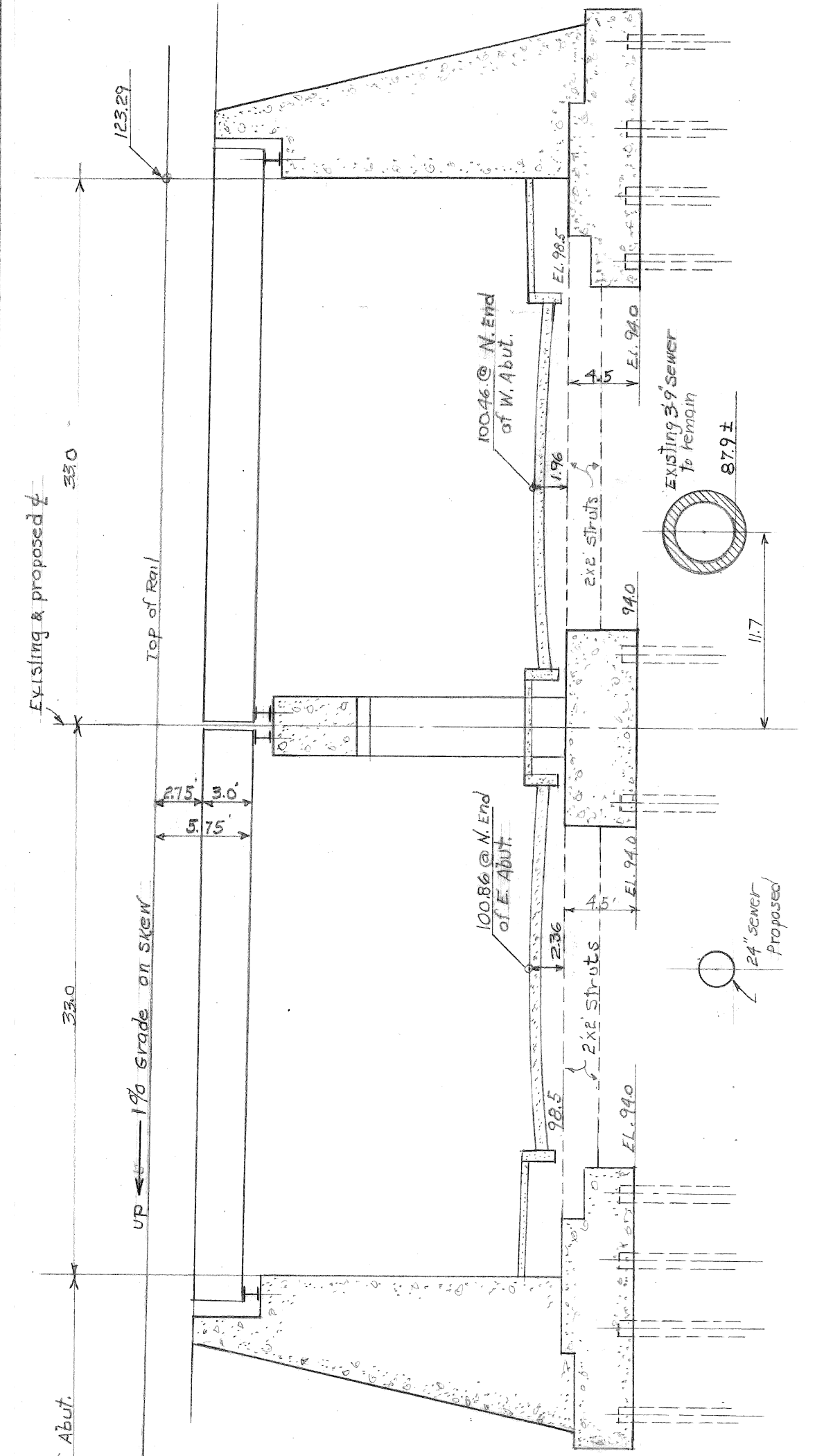


PROFILE OF LONYO ROAD.  
SCALE { HORIZONTAL 1" = 40'  
VERTICAL 1" = 10'

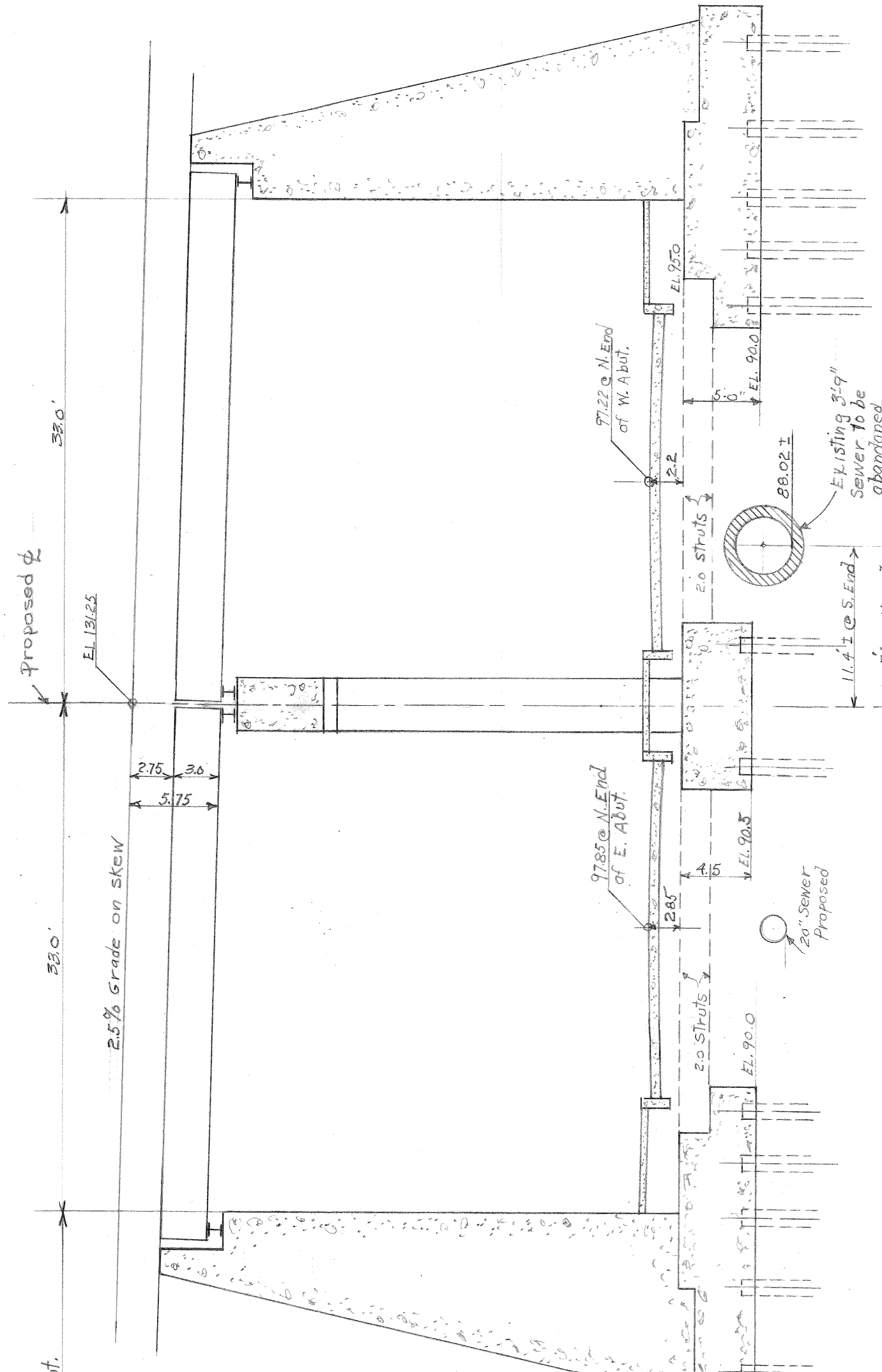
APPROVED \_\_\_\_\_  
CITY ENGINEER \_\_\_\_\_  
CHIEF ENGINEER M.C.R. \_\_\_\_\_

CITY OF DETROIT  
DEPARTMENT OF PUBLIC WORKS  
OFFICE OF CITY ENGINEER  
DIVISION OF GRADE SEPARATION & BRIDGES  
**LONYO ROAD**  
SCALES AS SHOWN APRIL 1929  
DRAWN BY A.W.N.  
CHECKED BY \_\_\_\_\_

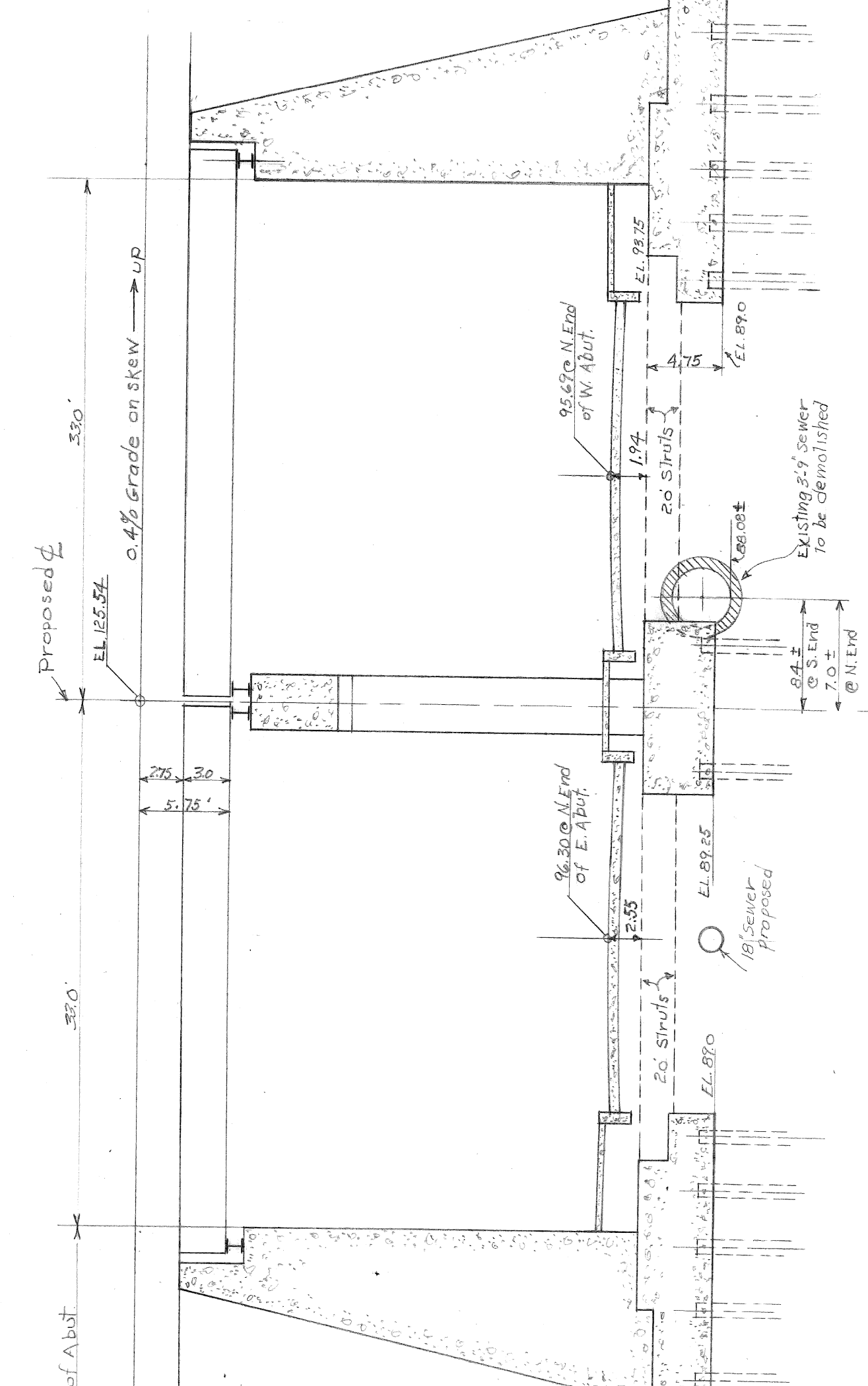
BOOKS { W-251 PAGE 56 X-700  
W-573 " 25  
793 " 35  
CHICAGO DIVISION



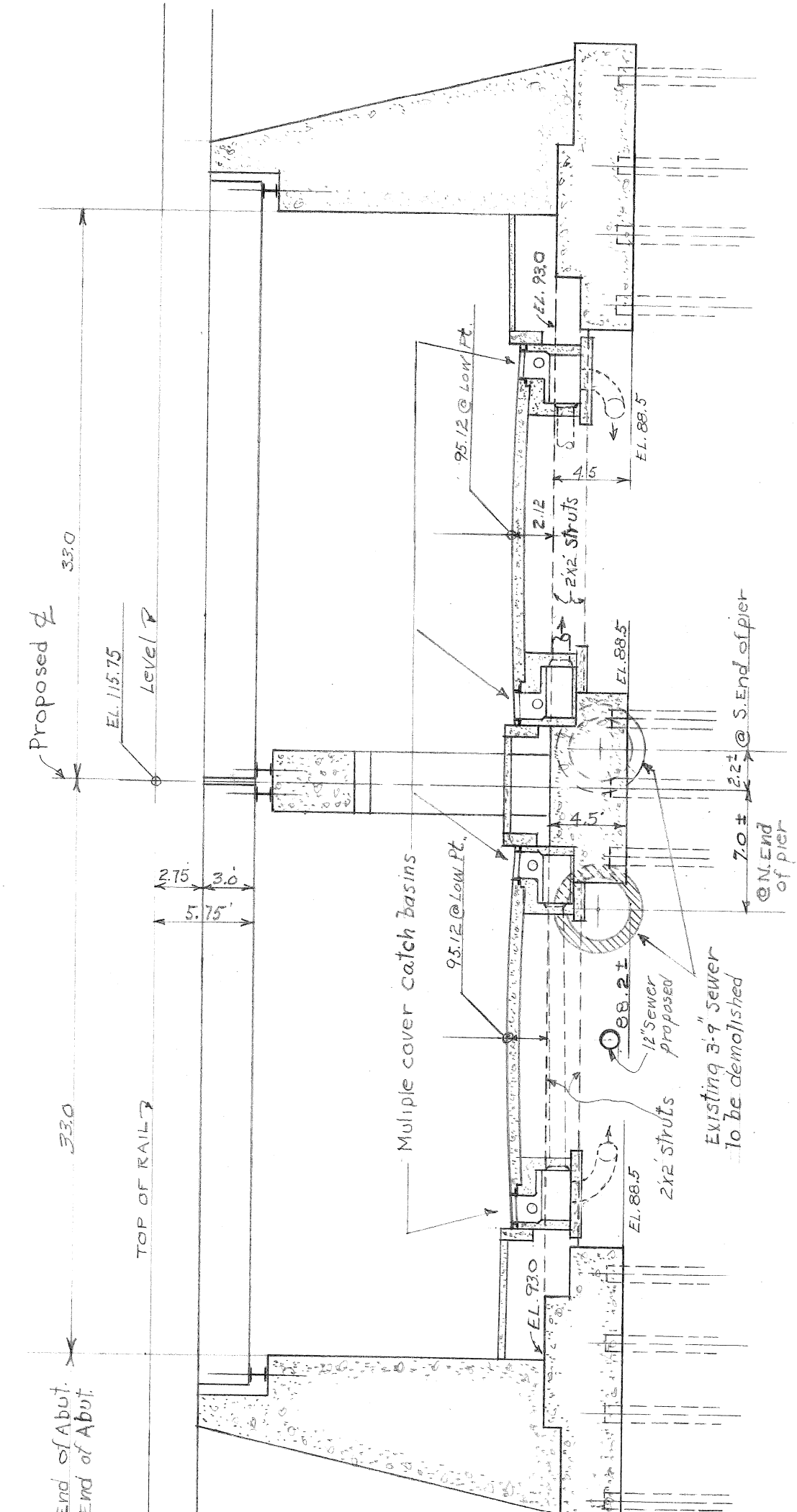
SECTION A-A - BRIDGE #2  
 SCALE 1/8" = 1'-0"



SECTION B-B - BRIDGE #2  
 SCALE 1/8" = 1'-0"

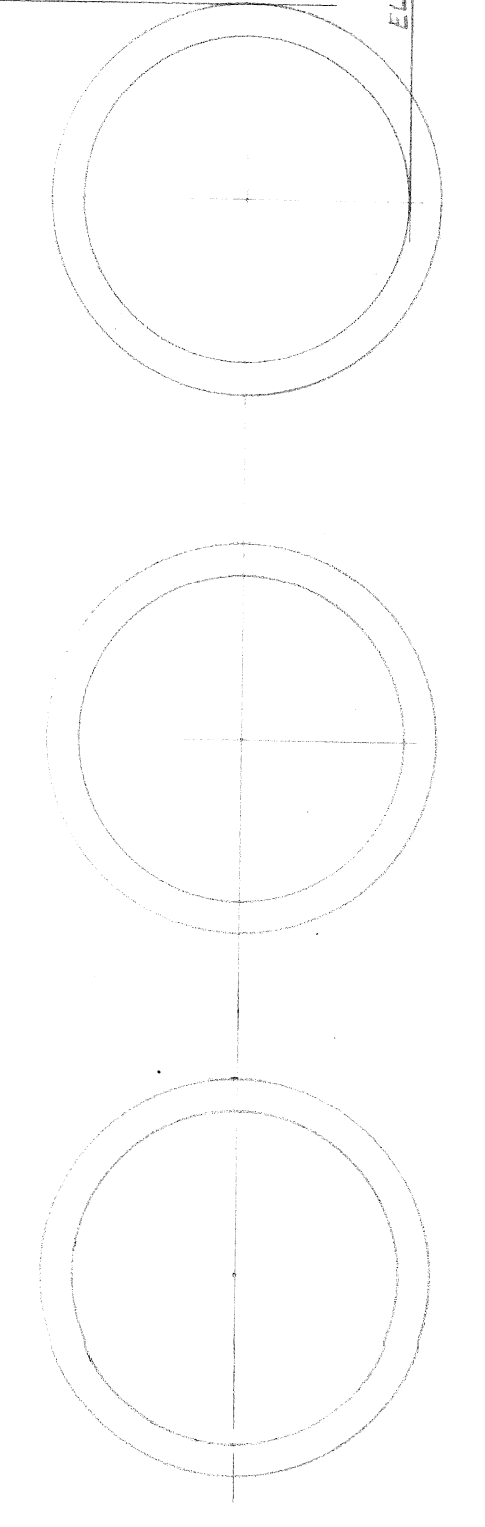
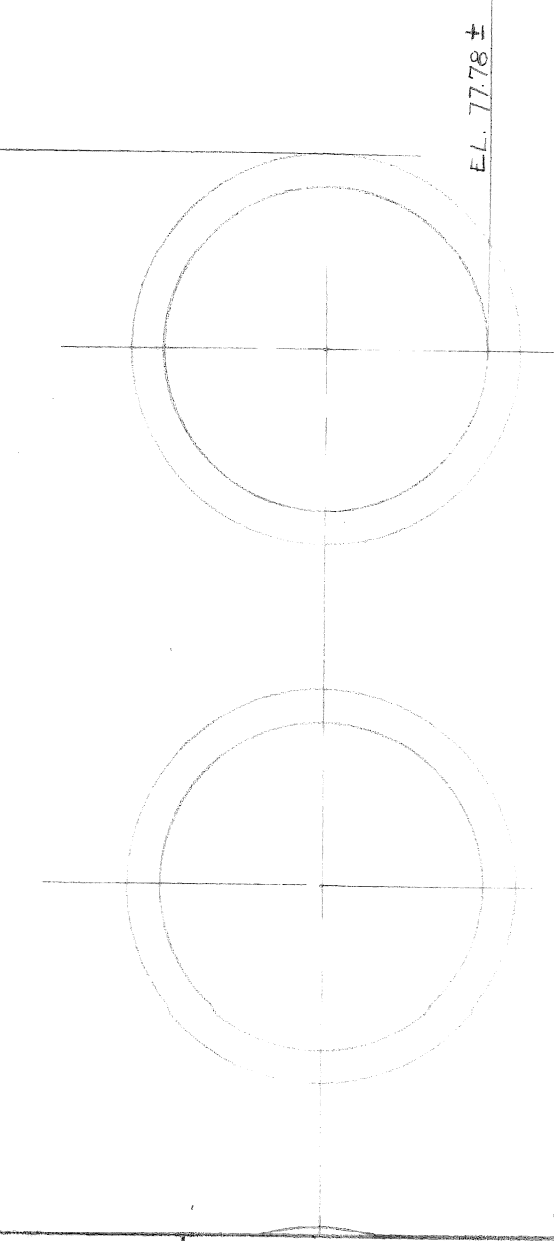
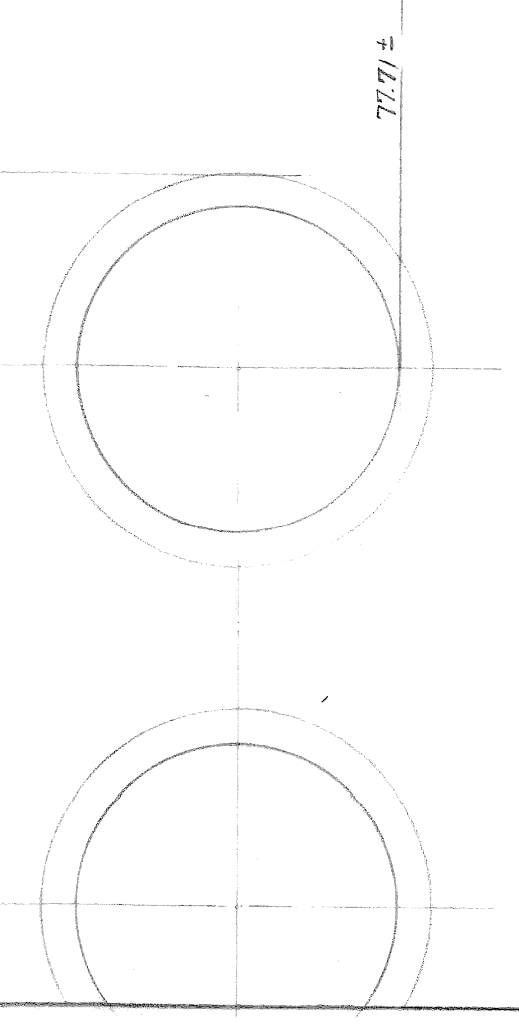
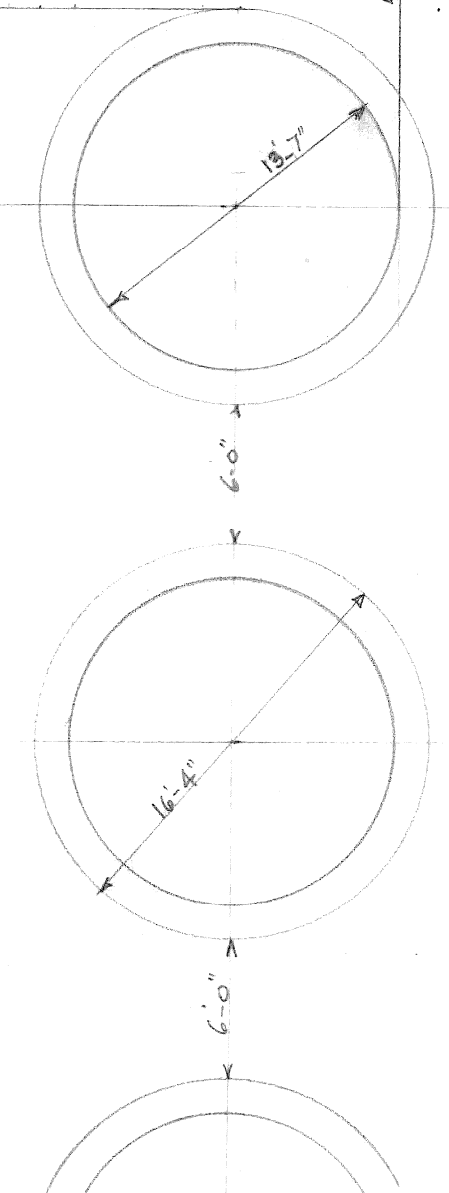


SECTION C-C - BRIDGE #1  
 SCALE 1/8" = 1'-0"



SECTION D-D - MAIN LINE BRIDGE  
 SCALE 1/8" = 1'-0"

EXISTING LONYO AVE. TRUNK SEWER



NOTE  
 ALL SECTS. ARE LOOKING SOUTH  
 FOR LOCATION OF SECTS. SEE SH #3  
 FOR LOCATION OF STROUTS " " "  
 FOR PLAN OF SEWER &  
 LOCATION OF CATCH BASINS SEE SH #2  
 ALL PILES TO HAVE POINT BEARING  
 AT ABOUT ELEV. 20±27  
 MAX. PILE CAPACITY - 50 TONS (PRIMARY)

DESIGNED BY	E. E. WALLACE
DRAWN BY	E. E. WALLACE
TRACED BY	
CHECKED BY	

APPROVED	

CITY OF DETROIT  
 DEPARTMENT OF PUBLIC WORKS  
 CITY ENGINEER'S OFFICE  
 BUREAU OF DESIGN

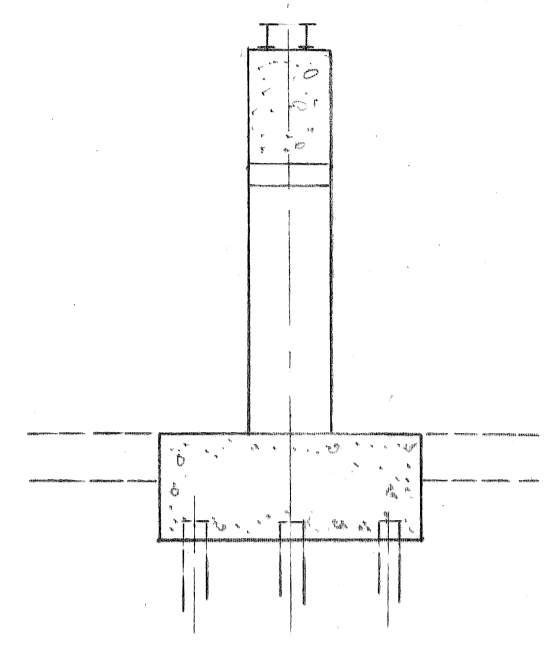
SCALE - AS NOTED

GRADE SEPARATION  
 LONYO AVE. & M.C.R.R. (N.Y.C.R.R.)  
 PRELIMINARY PLAN  
 CROSS SECTIONS AT BRIDGES

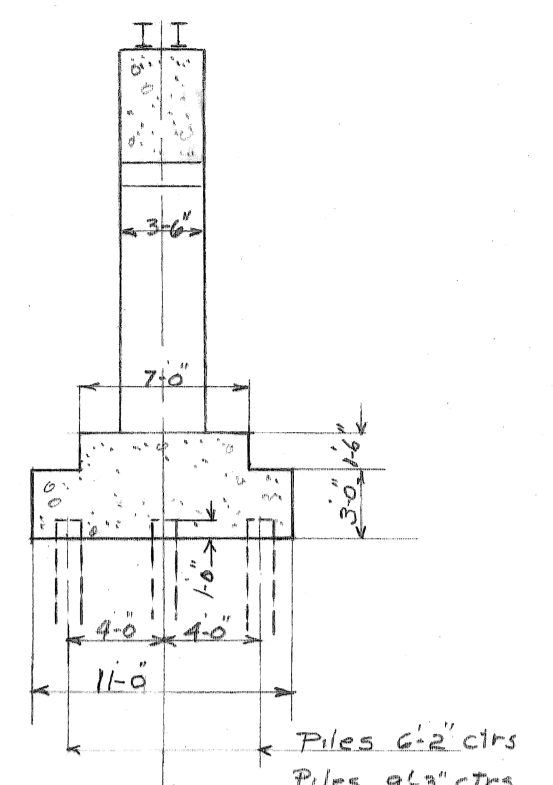
SCHEME #1

SHEET 4 OF 5 SHEETS
JOB No 43
DRAWING No. X-711
DATE July 26, 1945

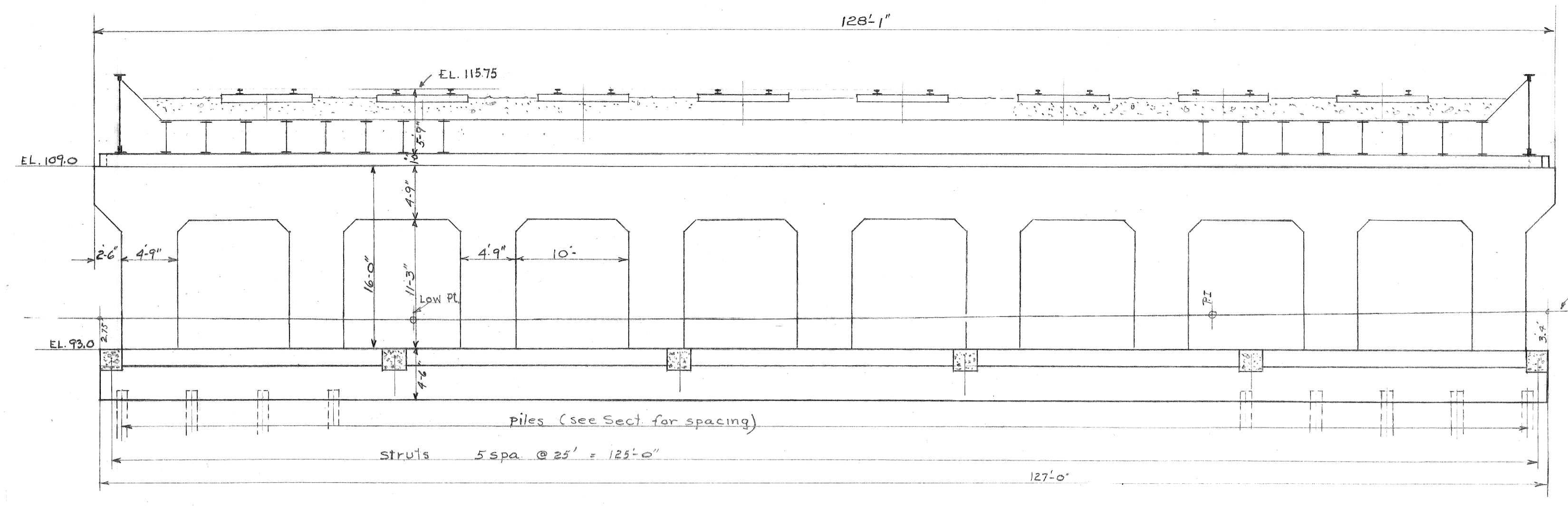
S.P. 5-28-45  
 B.P. 6-21-45  
 B.P. 7-25-45



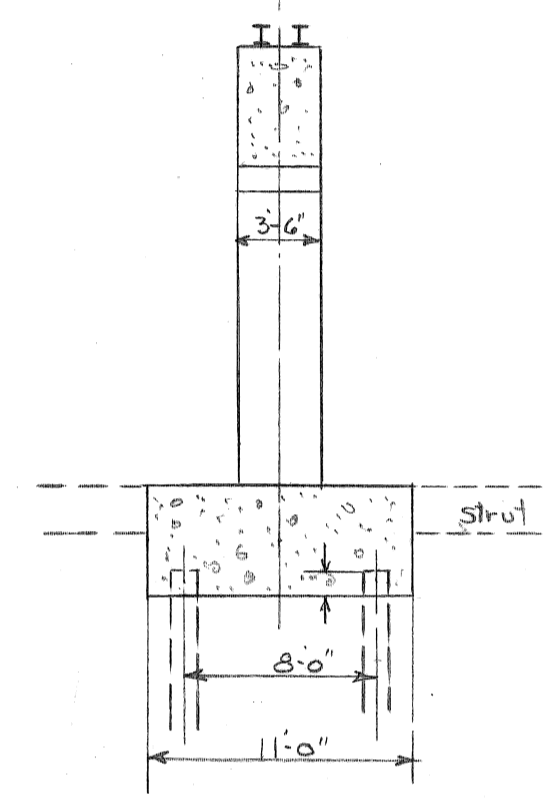
SECTION AT STRUTS



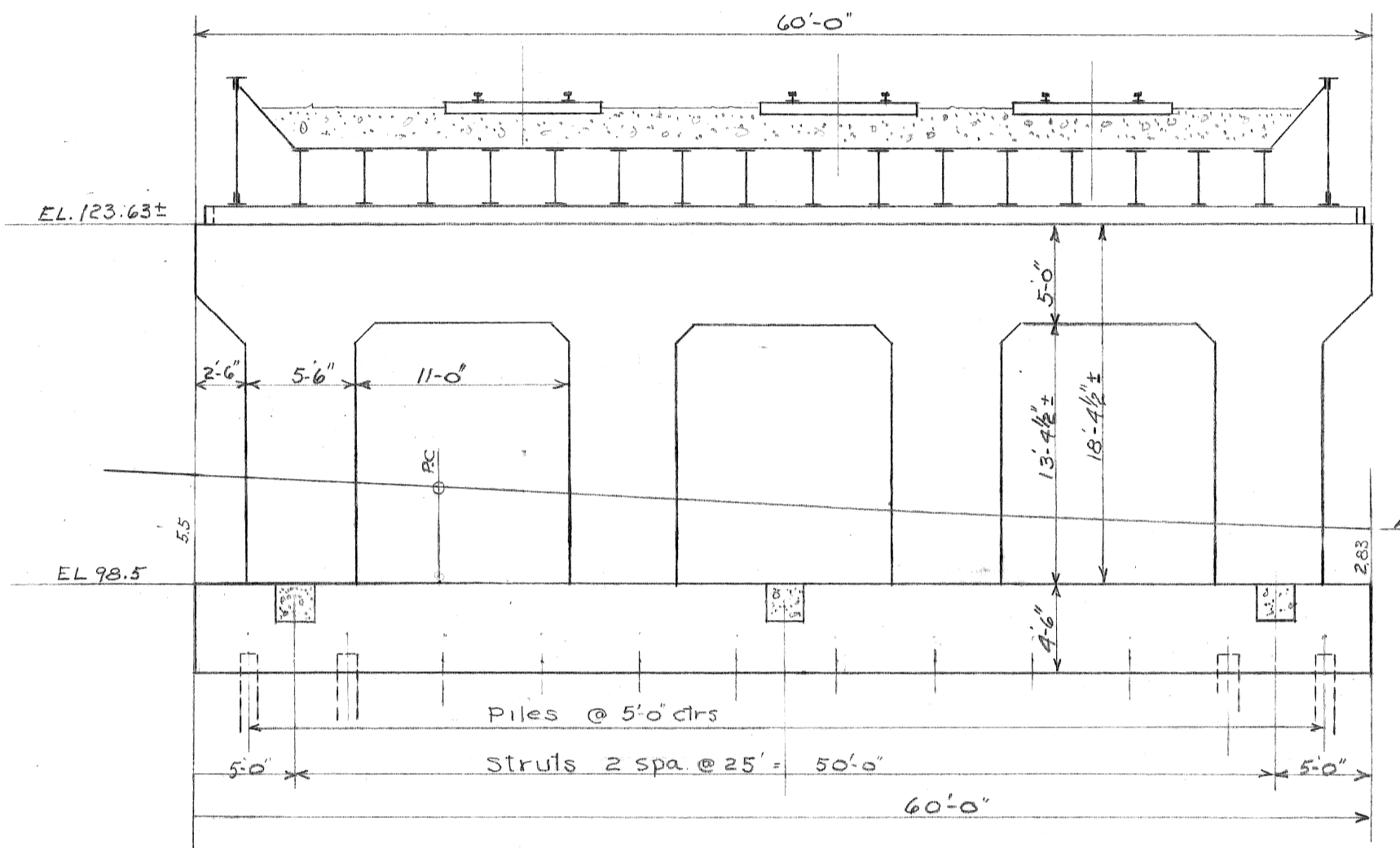
TYPICAL SECTION BETWEEN STRUTS  
 Piles 6'-2" ctrs  
 Piles 9'-3" ctrs



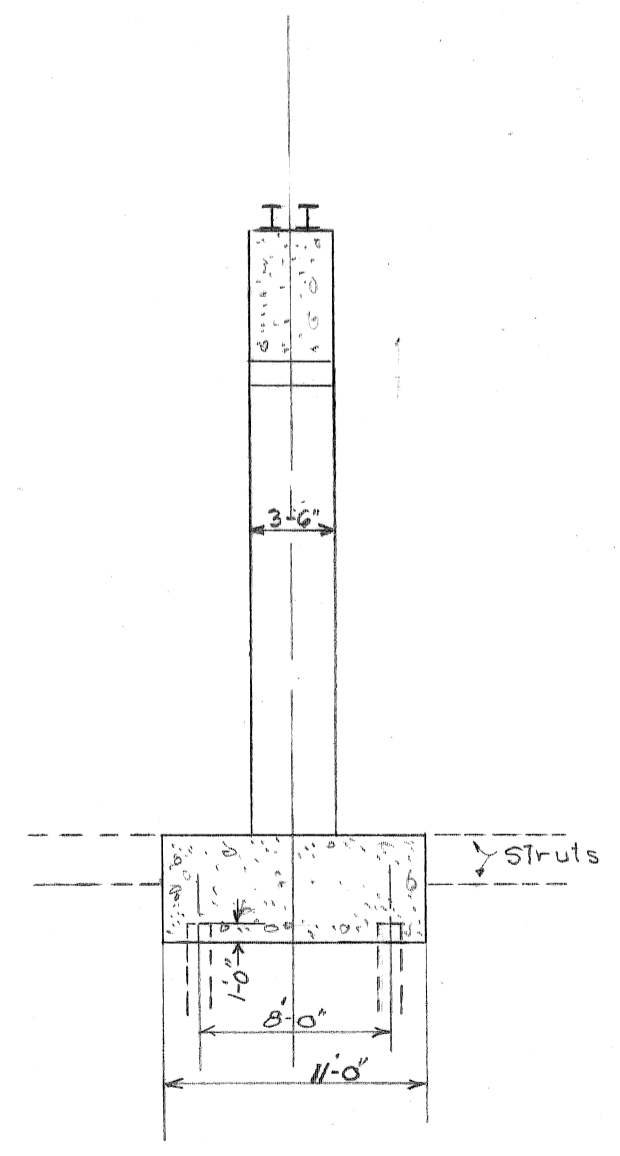
ELEVATION OF CENTER PIER FOR MAIN LINE BRIDGE  
 SCALE = 1/8" = 1'-0"



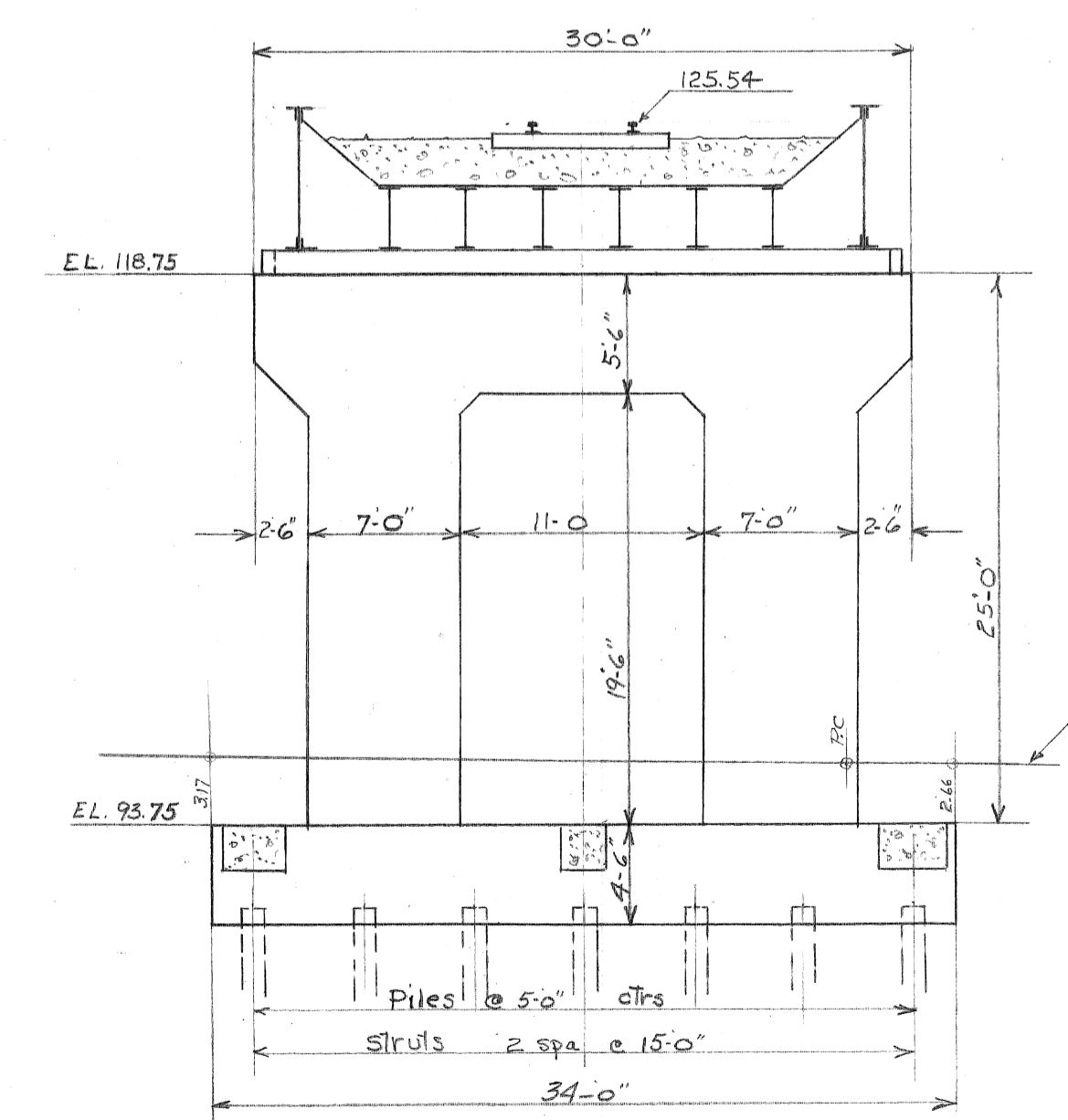
TYPICAL SECTION



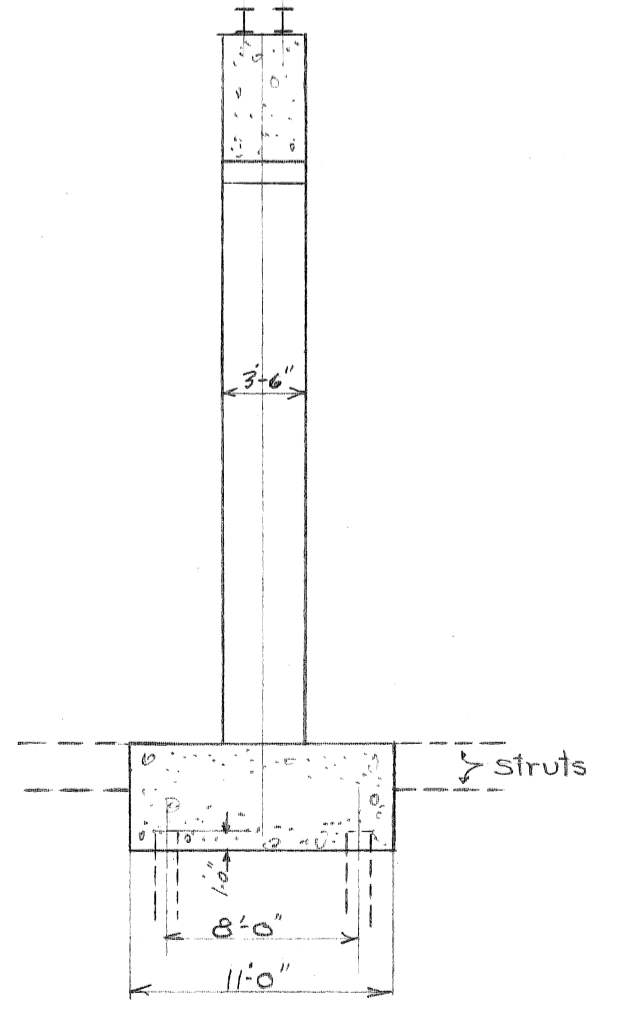
ELEVATION OF CENTER PIER FOR #3 BRIDGE  
 SCALE 1/8" = 1'-0"



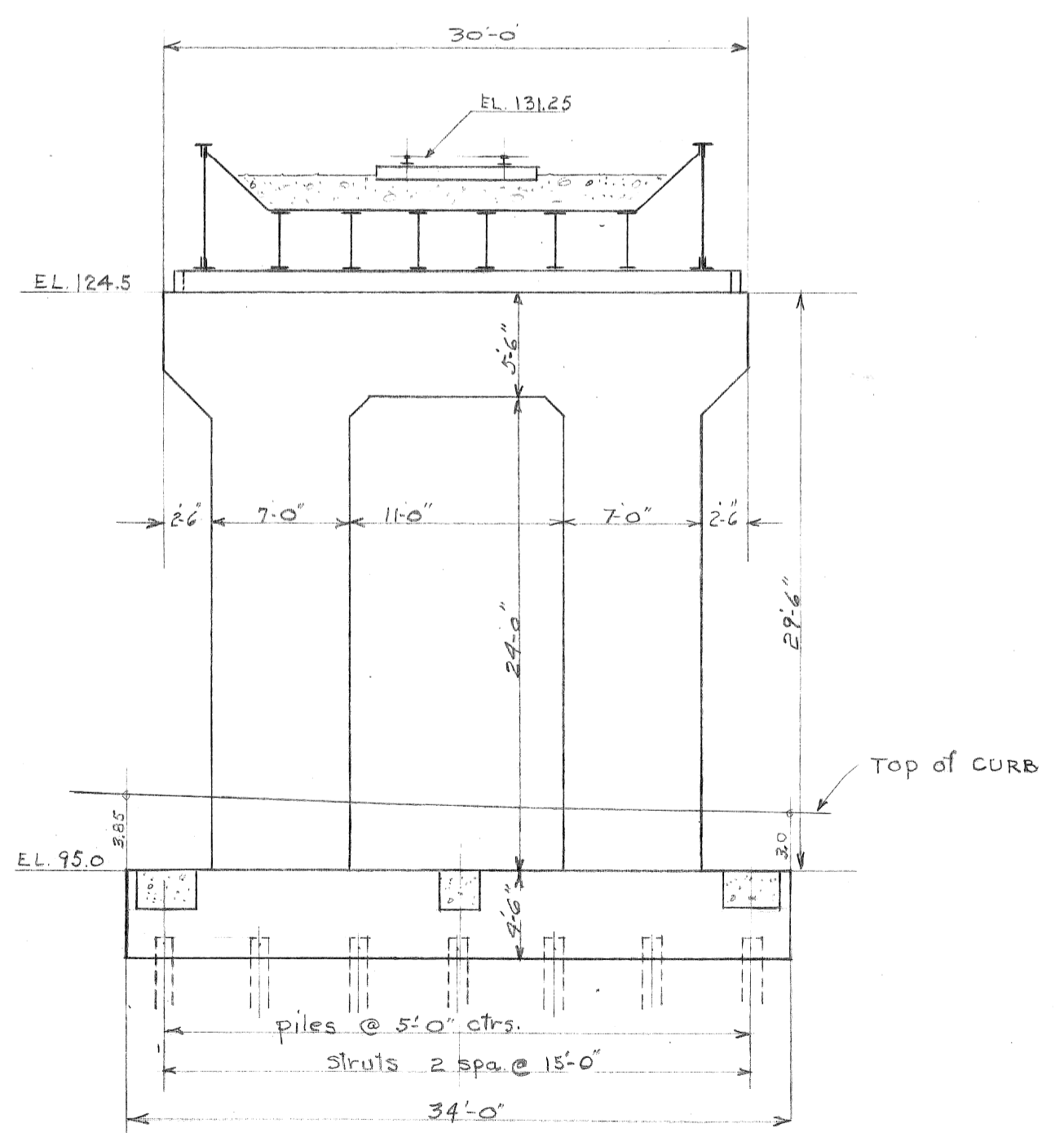
TYPICAL SECTION



ELEVATION OF CENTER PIER FOR #1 BRIDGE  
 SCALE 1/8" = 1'-0"



TYPICAL SECTION



ELEVATION OF CENTER PIER FOR #2 BRIDGE  
 SCALE 1/8" = 1'-0"

NOTE  
 ALL PILING TO HAVE POINT BEARING  
 AT ABOUT ELEV 20 TO 27  
 MAX PILE CAPACITY - 50 TONS (PRIMARY LB)

DESIGNED BY	E. E. WALLACE	APPROVED:	
DRAWN BY	E. E. WALLACE		
TRACED BY			
CHECKED BY		CITY ENGINEER	

NOTED BY	DESCRIPTION	DRW	CHK'D	AP'D	DATE
REVISIONS					

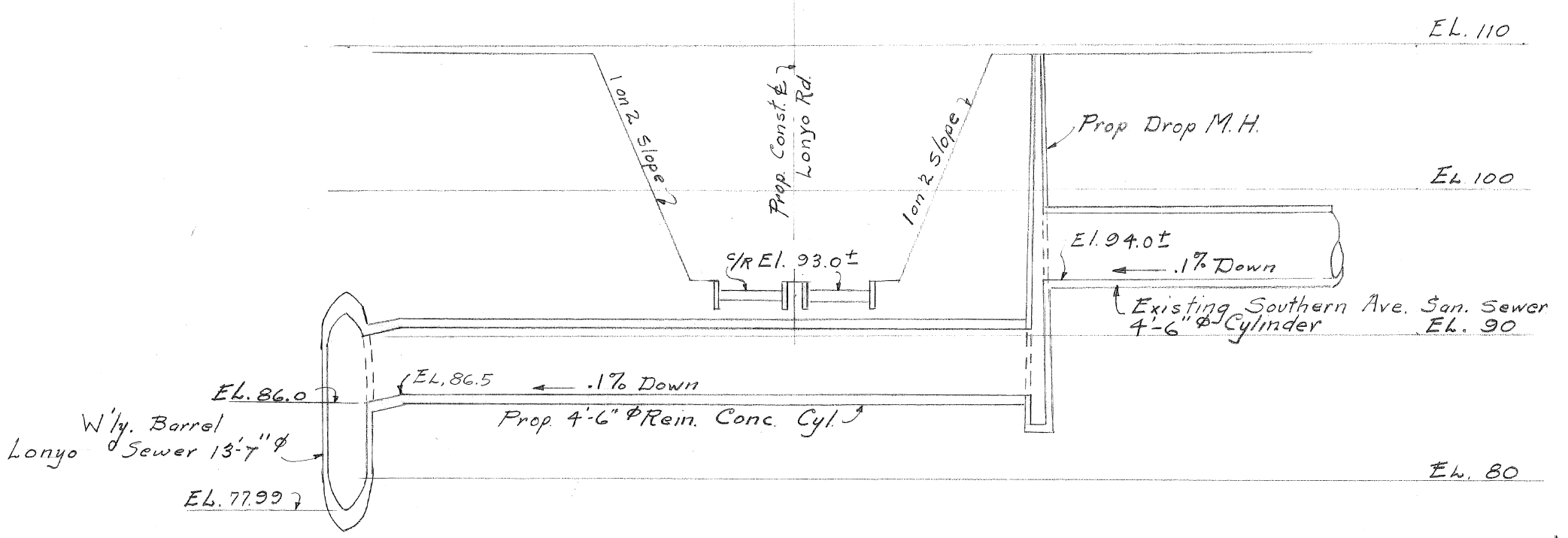
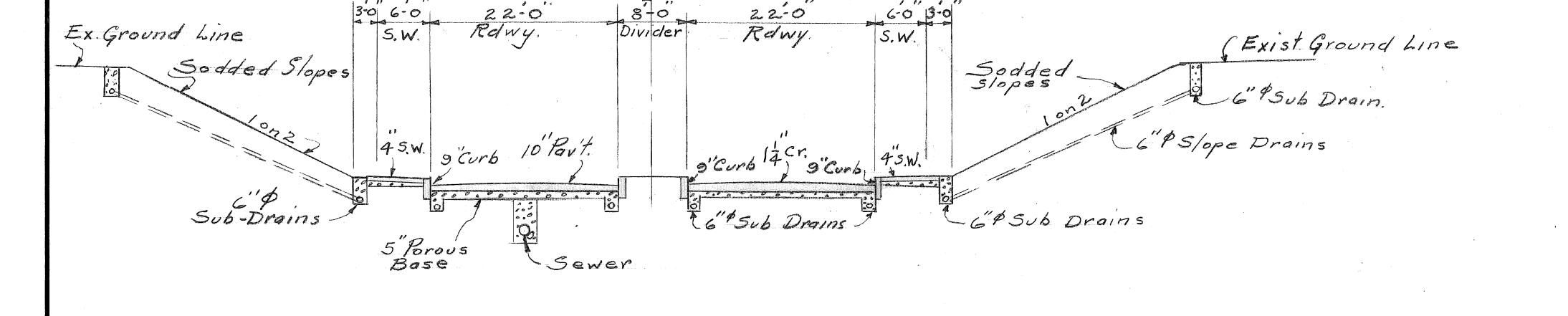
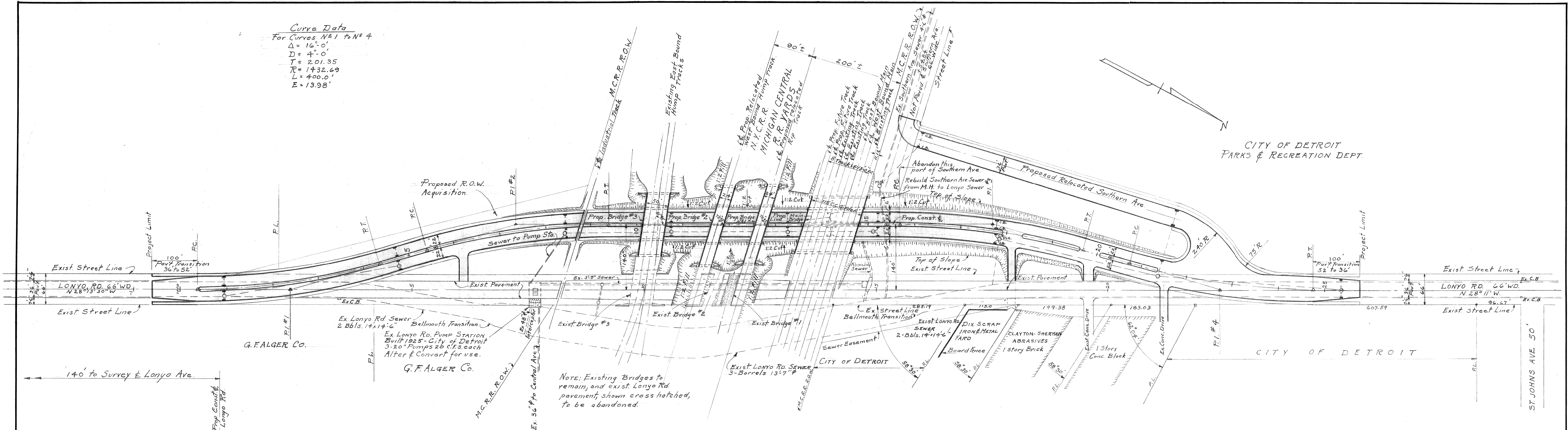
**CITY OF DETROIT**  
 DEPARTMENT OF PUBLIC WORKS  
 CITY ENGINEERS OFFICE

GRADE SEPARATION  
 LONYO AVE. & M.C.R.R. (N.Y.C.R.R.)  
 PRELIMINARY PLAN  
 CENTER PIERS - ELEVATIONS & SECTIONS  
 SCALE - AS SHOWN

SHEET 5 OF 5 SHEETS
JOB No. 43
DRWG No. X-712
DATE July 26, 1945

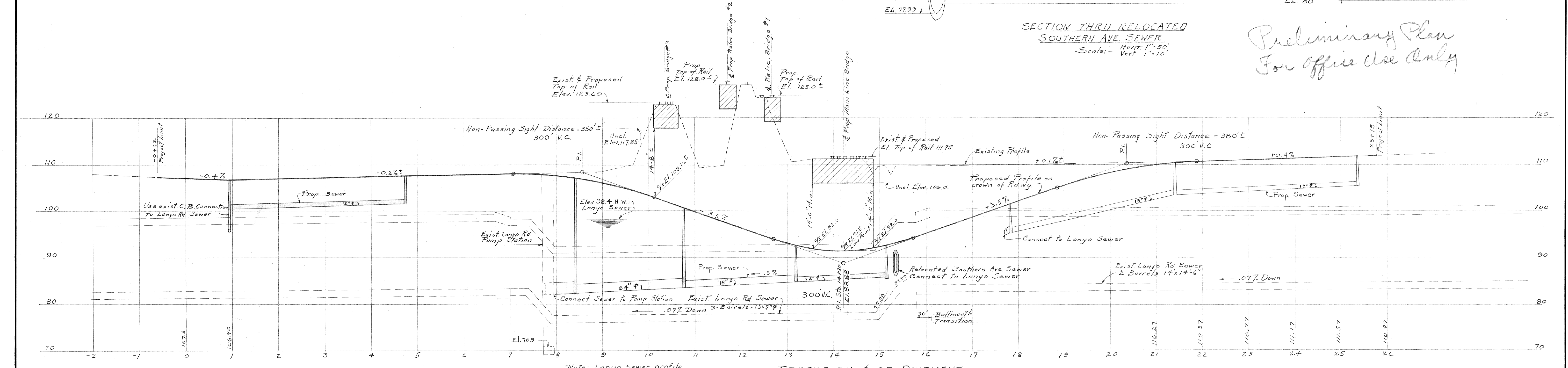
Draw. #1 GS-RR-32 C-14 5/25/45 X-712

**Curve Data**  
 For Curves N.S.1 to N.S.4  
 $\Delta = 16^\circ 0'$   
 $D = 4^\circ 0'$   
 $T = 201.35$   
 $R = 1432.69$   
 $L = 400.0'$   
 $E = 13.98'$

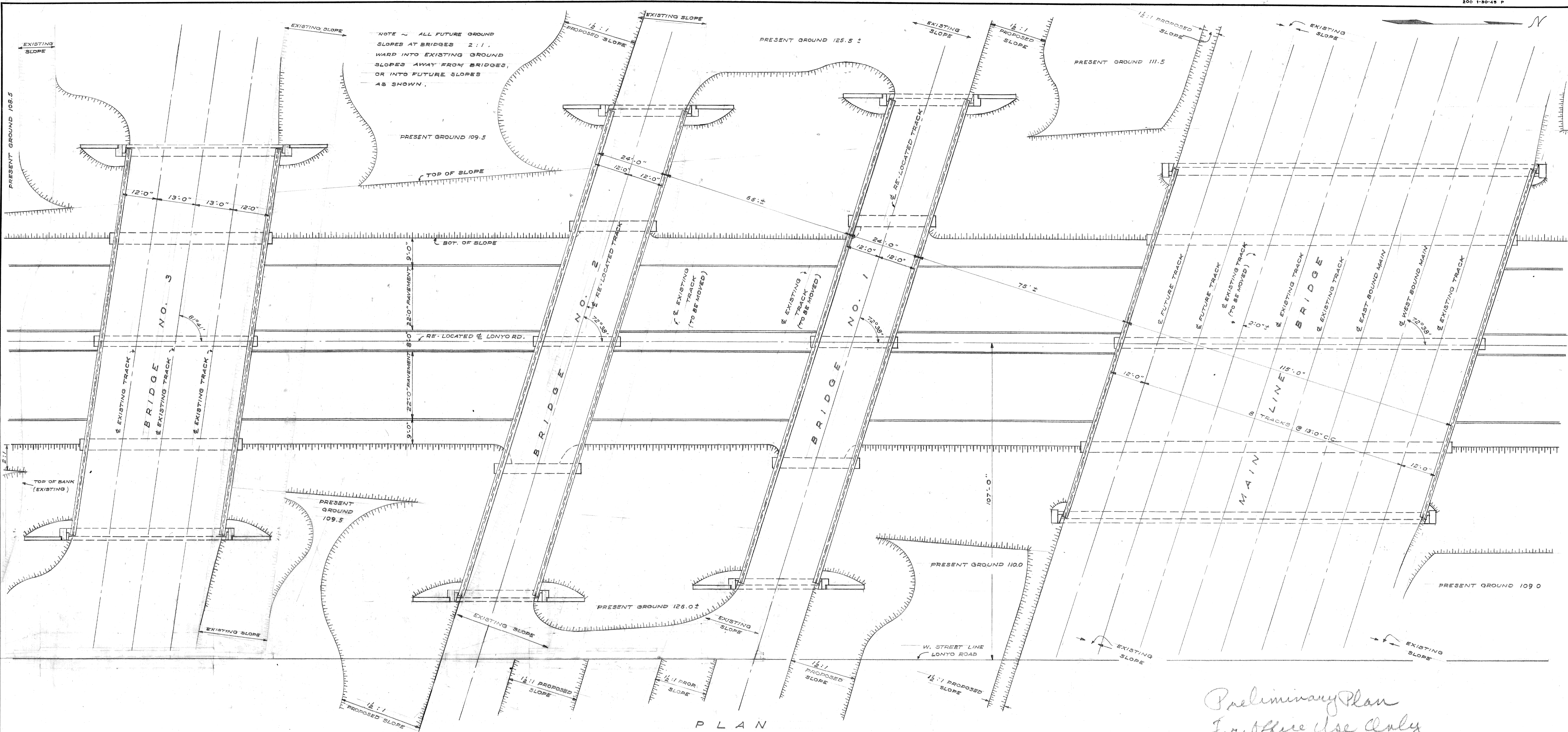


- DESCRIPTION OF PROJECT**
1. Re-alignment of Lonyo Road; to offset 140' West, maximum & parallel.
  2. Vehicular Underpass; 4-11'-0" Lanes with 8'-0" center divider. Approaches in open cut with sodded side slopes.
  3. Four R.R. Bridges of 4 Spans each.
  4. Track grade of Main Line & Bridge #3 tracks unchanged.
  5. Pile cap stub abutments.
  6. Alter & convert existing Pump Station for drainage.
  7. R.O.W. acquisition in southWest quadrant.
  8. Relocation of Southern Ave. intersection.

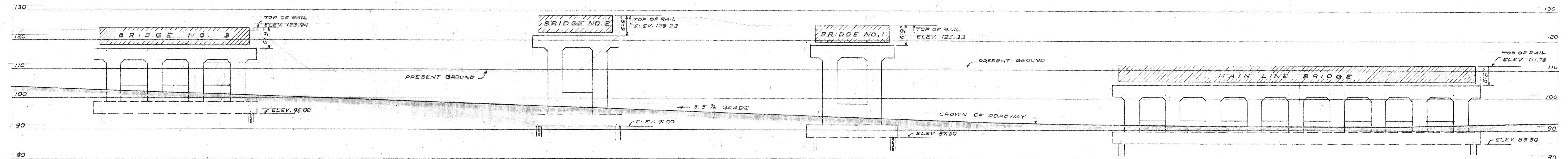
*Preliminary Plan  
 For office use only*



<table border="1"> <tr><td>G</td><td></td><td></td><td></td><td></td><td></td></tr> <tr><td>F</td><td></td><td></td><td></td><td></td><td></td></tr> <tr><td>E</td><td></td><td></td><td></td><td></td><td></td></tr> <tr><td>D</td><td></td><td></td><td></td><td></td><td></td></tr> <tr><td>C</td><td></td><td></td><td></td><td></td><td></td></tr> <tr><td>B</td><td></td><td></td><td></td><td></td><td></td></tr> <tr><td>A</td><td></td><td></td><td></td><td></td><td></td></tr> </table>	G						F						E						D						C						B						A						<table border="1"> <tr><th>DESCRIPTION</th><th>DATE</th><th>BY</th><th>APPROVED</th></tr> <tr><td> </td><td> </td><td> </td><td> </td></tr> <tr><td> </td><td> </td><td> </td><td> </td></tr> <tr><td> </td><td> </td><td> </td><td> </td></tr> </table>	DESCRIPTION	DATE	BY	APPROVED													<table border="1"> <tr><td>DESIGNED BY</td><td>A. Berarducci</td><td>APPROVED:</td><td></td></tr> <tr><td>DRAWN BY</td><td>A. Berarducci</td><td></td><td></td></tr> <tr><td>TRACED BY</td><td>F. J. Currie</td><td>ENGINEER OF</td><td></td></tr> <tr><td>CHECKED BY</td><td></td><td>CITY ENGINEER</td><td></td></tr> </table>	DESIGNED BY	A. Berarducci	APPROVED:		DRAWN BY	A. Berarducci			TRACED BY	F. J. Currie	ENGINEER OF		CHECKED BY		CITY ENGINEER		<p><b>CITY OF DETROIT</b>          DEPARTMENT OF PUBLIC WORKS          CITY ENGINEERS OFFICE          BUREAU OF DESIGN</p>	<p>GRADE SEPARATION          LONYO ROAD &amp; M.C.R.R. (N.Y.C.R.R.)</p> <p>PRELIMINARY PLAN          GENERAL PLAN OF PROJECT &amp; PROFILE</p> <p>SCALE: As Shown</p>	<table border="1"> <tr><td>SHEET</td><td>2</td><td>of</td><td>4</td><td>SHEETS</td></tr> <tr><td>JOB No.</td><td colspan="4">43</td></tr> <tr><td>DRWG No.</td><td colspan="4">X-713</td></tr> <tr><td>DATE</td><td colspan="4">SEPT. 24, 1945</td></tr> </table>	SHEET	2	of	4	SHEETS	JOB No.	43				DRWG No.	X-713				DATE	SEPT. 24, 1945			
	G																																																																																																		
	F																																																																																																		
	E																																																																																																		
D																																																																																																			
C																																																																																																			
B																																																																																																			
A																																																																																																			
DESCRIPTION	DATE	BY	APPROVED																																																																																																
DESIGNED BY	A. Berarducci	APPROVED:																																																																																																	
DRAWN BY	A. Berarducci																																																																																																		
TRACED BY	F. J. Currie	ENGINEER OF																																																																																																	
CHECKED BY		CITY ENGINEER																																																																																																	
SHEET	2	of	4	SHEETS																																																																																															
JOB No.	43																																																																																																		
DRWG No.	X-713																																																																																																		
DATE	SEPT. 24, 1945																																																																																																		



*Preliminary Plan  
For office use only*



PROFILE AT  $\&$  OF ROADWAY

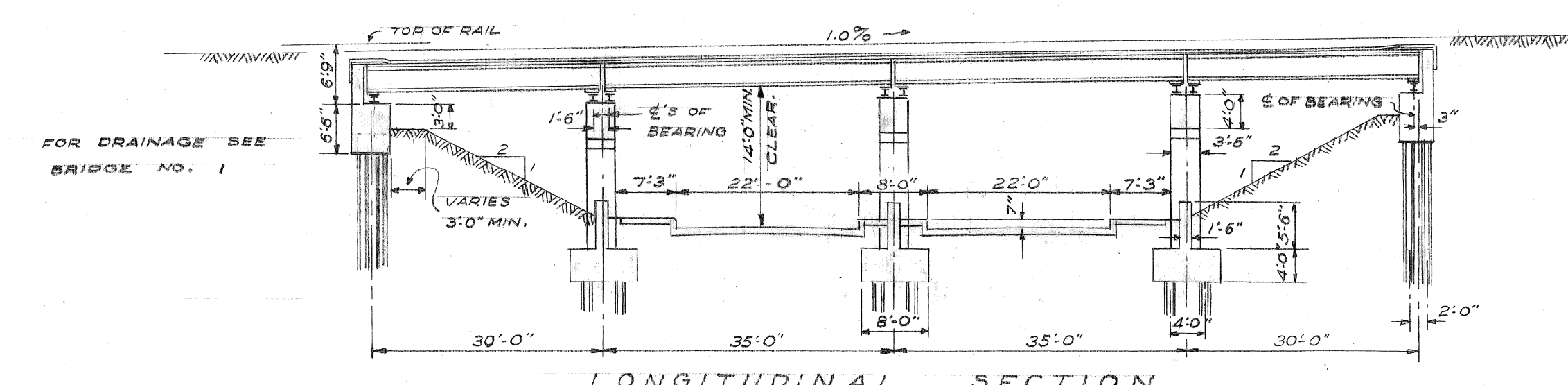
DESIGNED BY	O. N. LEXAU A. BERARDUCCI
DRAWN BY	O. N. LEXAU
TRACED BY	
CHECKED BY	
APPROVED:	
ENGINEER OF	
CITY ENGINEER	

DESCRIPTION	REV	CHKD	APVD	DATE
REVISIONS				

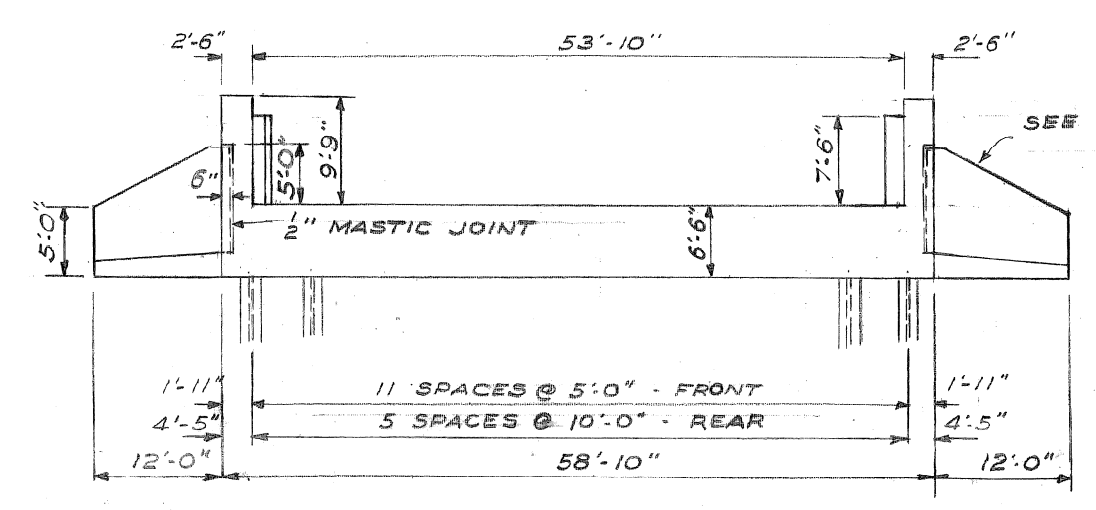
**CITY OF DETROIT**  
DEPARTMENT OF PUBLIC WORKS  
CITY ENGINEERS OFFICE  
BUREAU OF DESIGN

GRADE SEPARATION  
LONYO ROAD & M.C.R.R. (N.Y.C.R.R.)  
PRELIMINARY PLAN  
GENERAL PLAN OF STRUCTURES  
SCHEME 2

SHEET 3 OF 4 SHEETS
JOB NO. 43
DRWG NO. X-714
DATE SEPT. 24, 1945

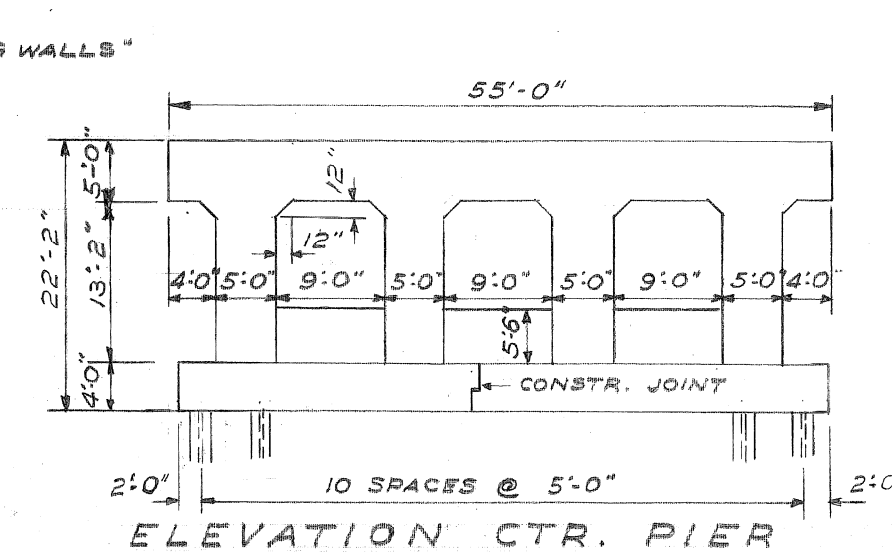


LONGITUDINAL SECTION  
 TAKEN AT RIGHT 1/8 TO 1/4 OF ROADWAY, LOOKING NORTH

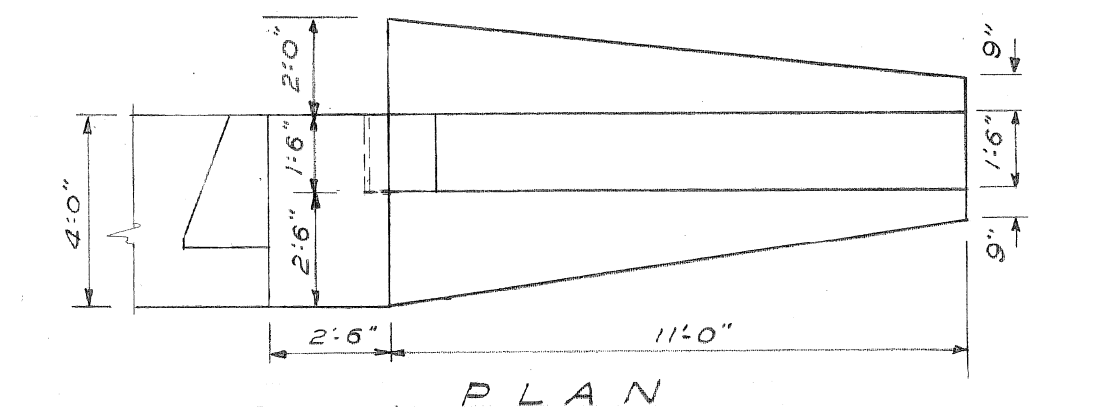


FRONT ELEVATION  
 EAST ABUTMENT

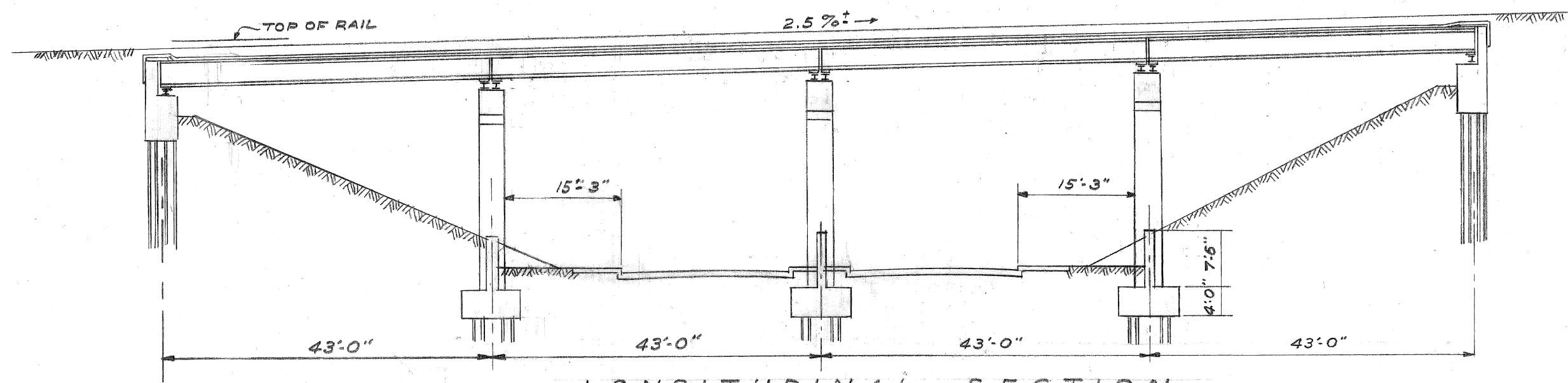
DETAILS OF BRIDGE NO. 3  
 DETAILS FOR OTHER BRIDGES SAME AS SHOWN FOR BRIDGE NO. 3, EXCEPT AS NOTED



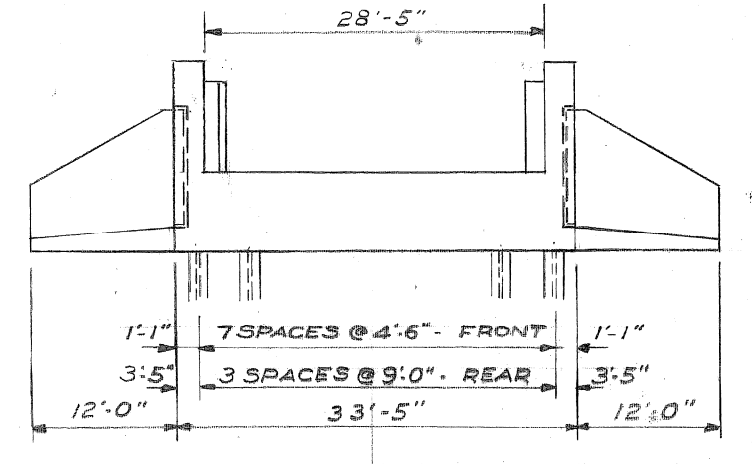
ELEVATION CTR. PIER



PLAN

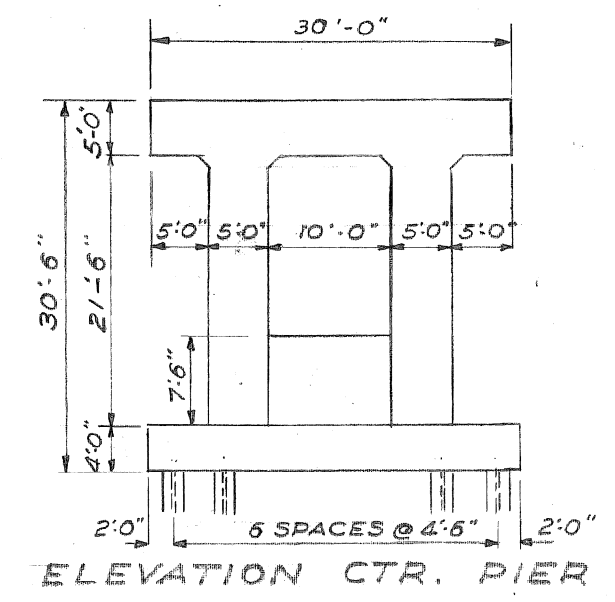


LONGITUDINAL SECTION

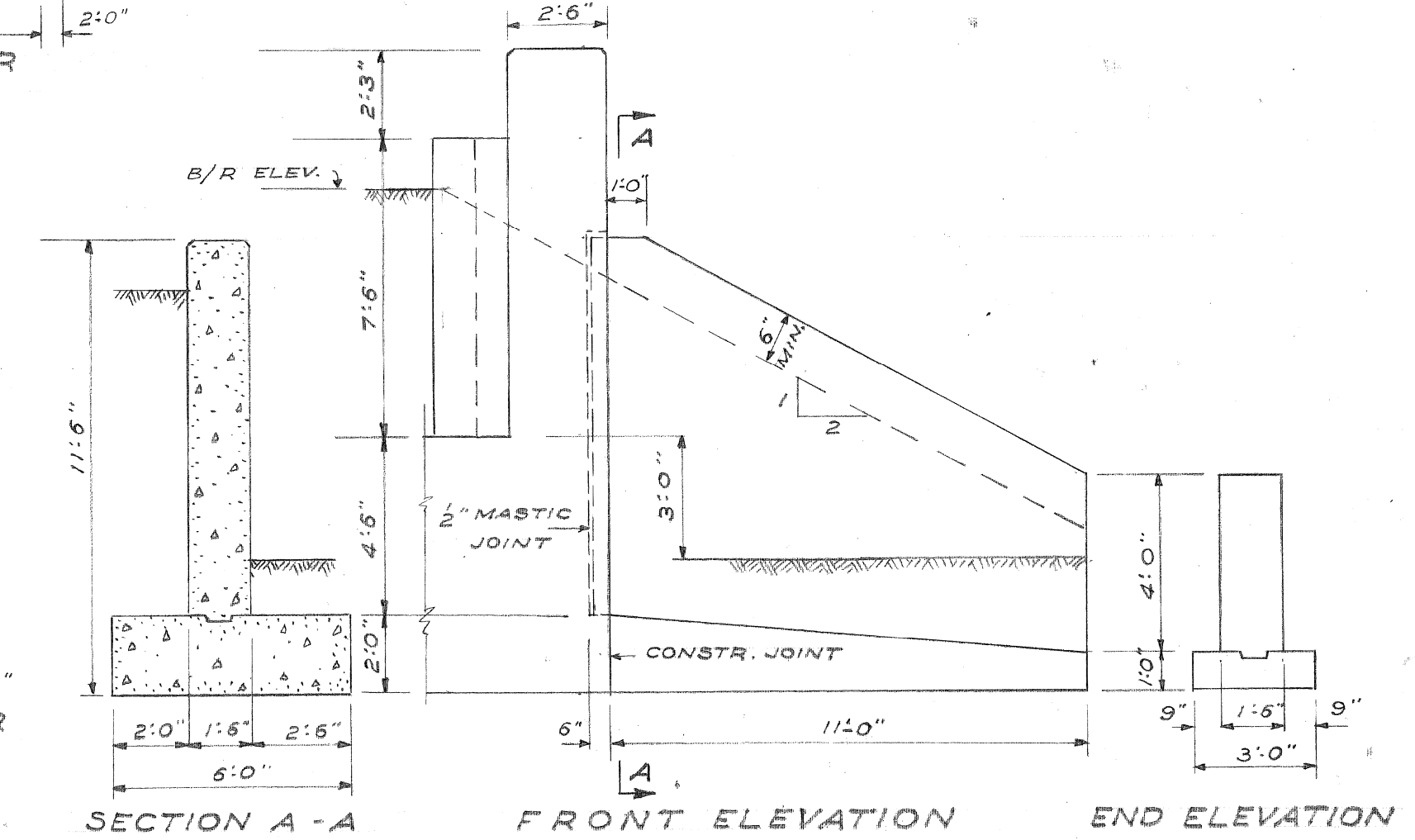


FRONT ELEVATION  
 EAST ABUTMENT

BRIDGE NO. 2

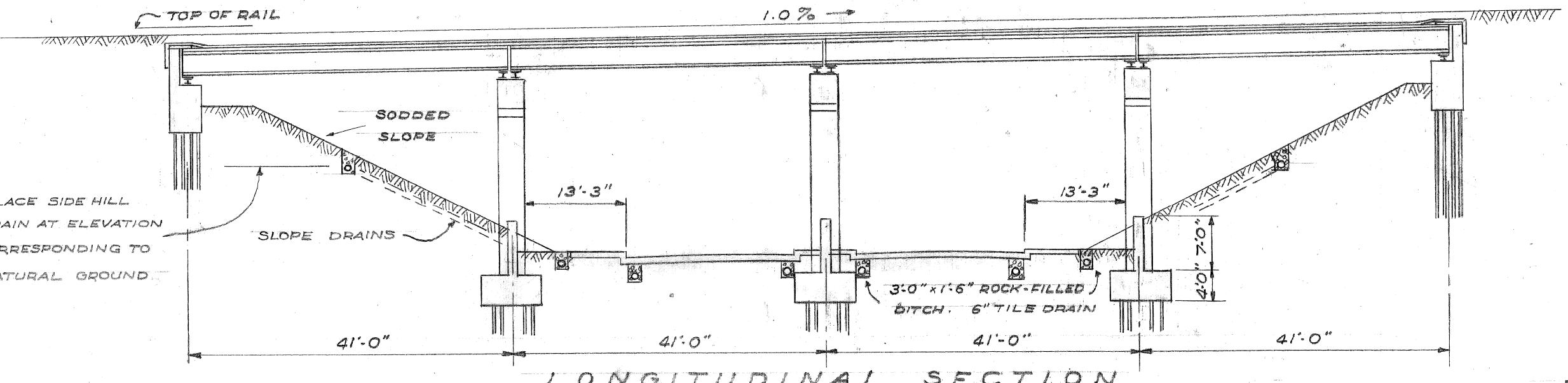


ELEVATION CTR. PIER

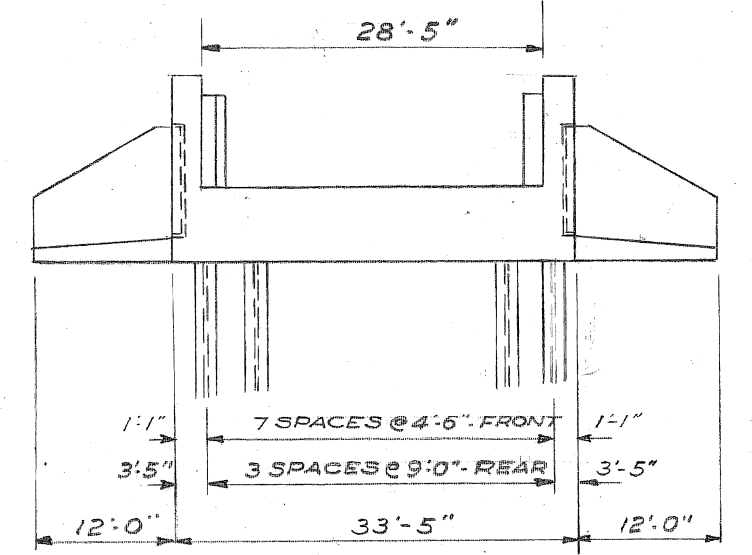


SECTION A-A  
 FRONT ELEVATION END ELEVATION

DETAILS OF WING WALLS  
 ALL WING WALLS SIMILAR  
 SCALE 1/4" = 1'-0"

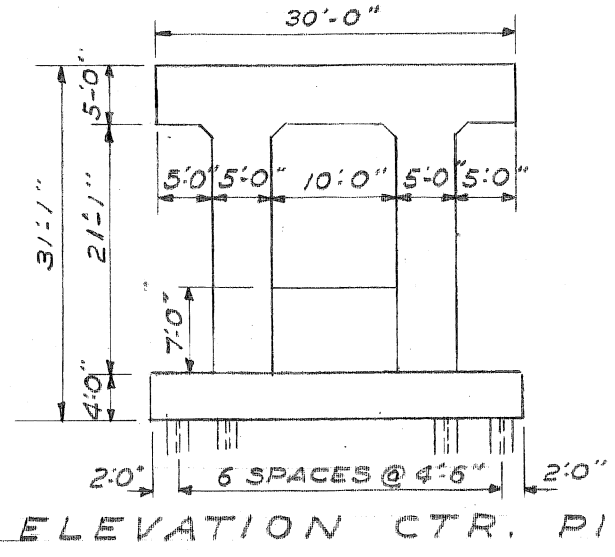


LONGITUDINAL SECTION

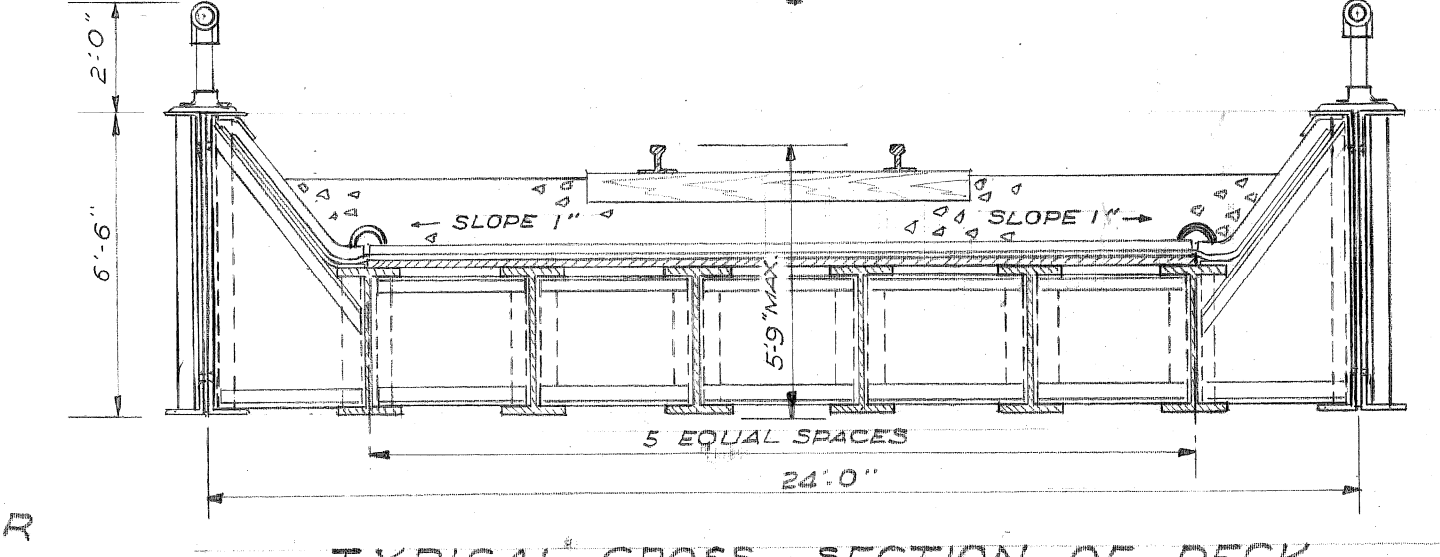


FRONT ELEVATION  
 EAST ABUTMENT

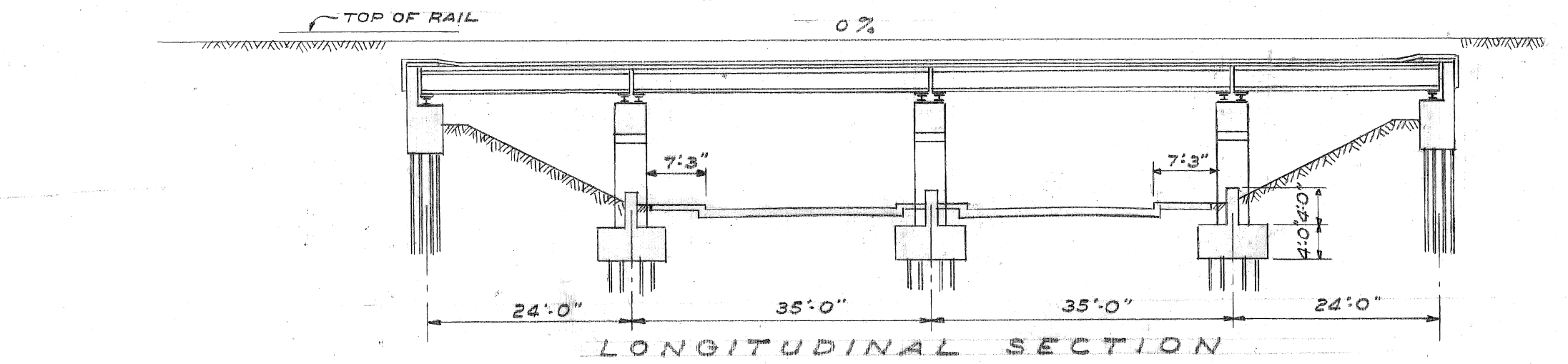
BRIDGE NO. 1



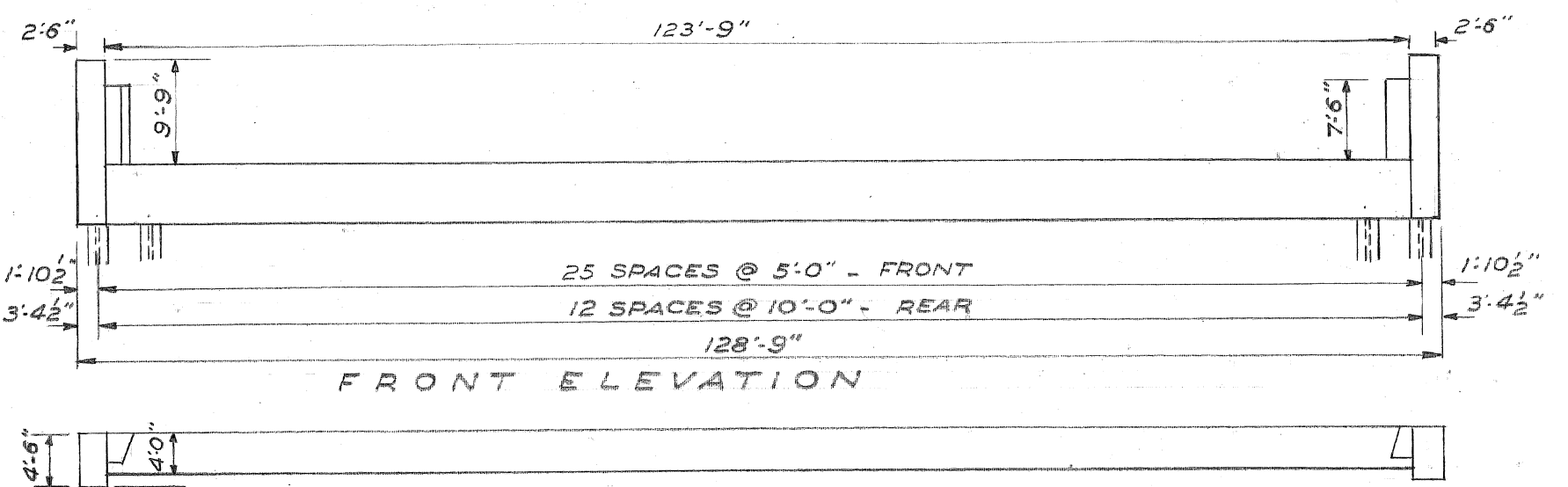
ELEVATION CTR. PIER



TYPICAL CROSS SECTION OF DECK  
 AS SHOWN FOR BRIDGES 1 AND 2  
 SCALE 1/4" = 1'-0"



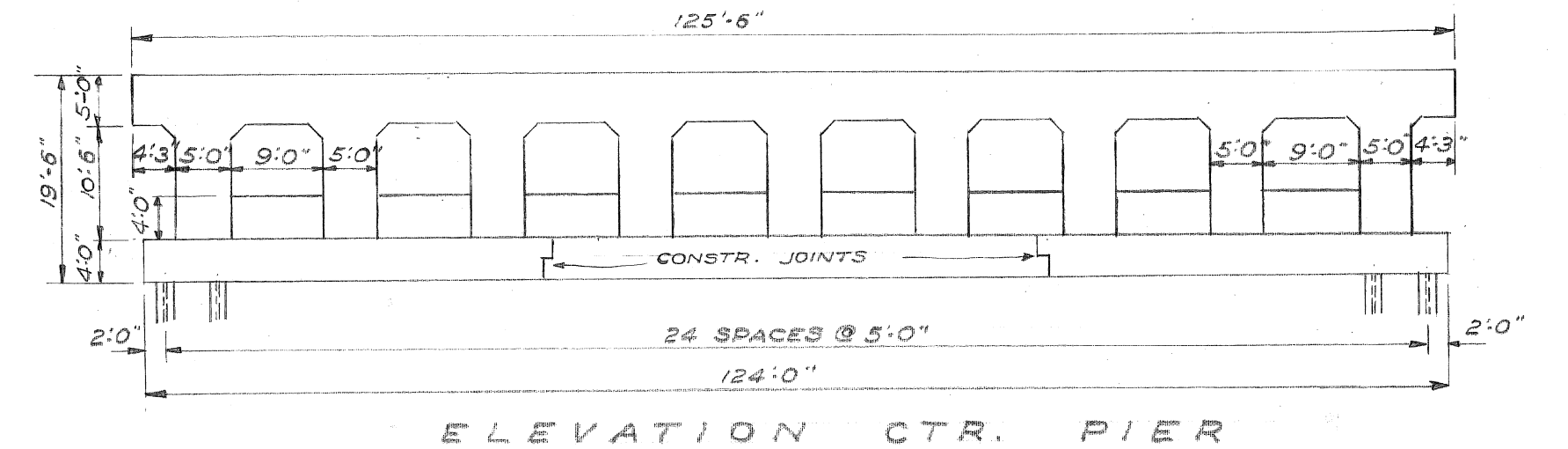
LONGITUDINAL SECTION



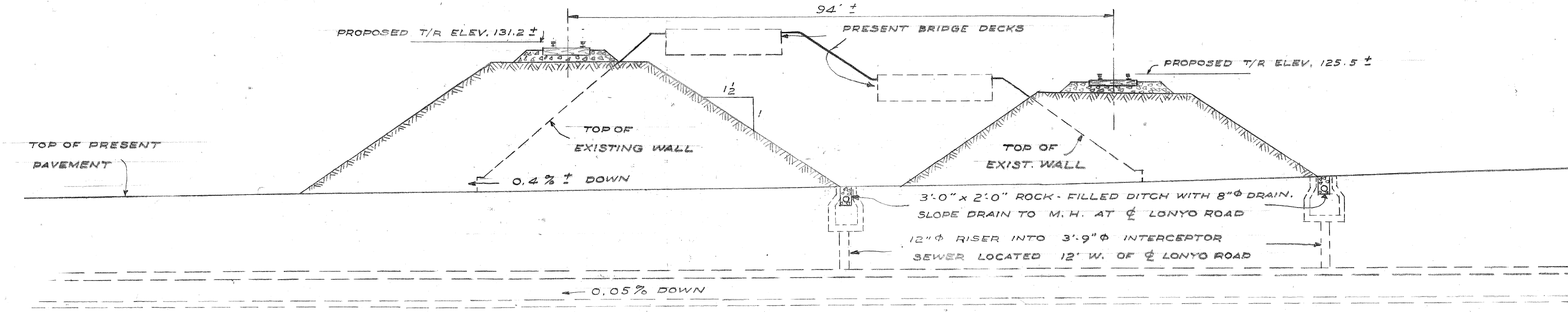
FRONT ELEVATION

PLAN  
 EAST ABUTMENT

DETAILS OF MAIN LINE BRIDGE



ELEVATION CTR. PIER



PROPOSED EMBANKMENT  
 CARRYING RE-LOCATED TRACKS 1 & 2 OVER LONYO RD.

*Preliminary Plan  
 For office use only*

NOTE: REQUIRED CAPACITY OF PILES 50 TONS

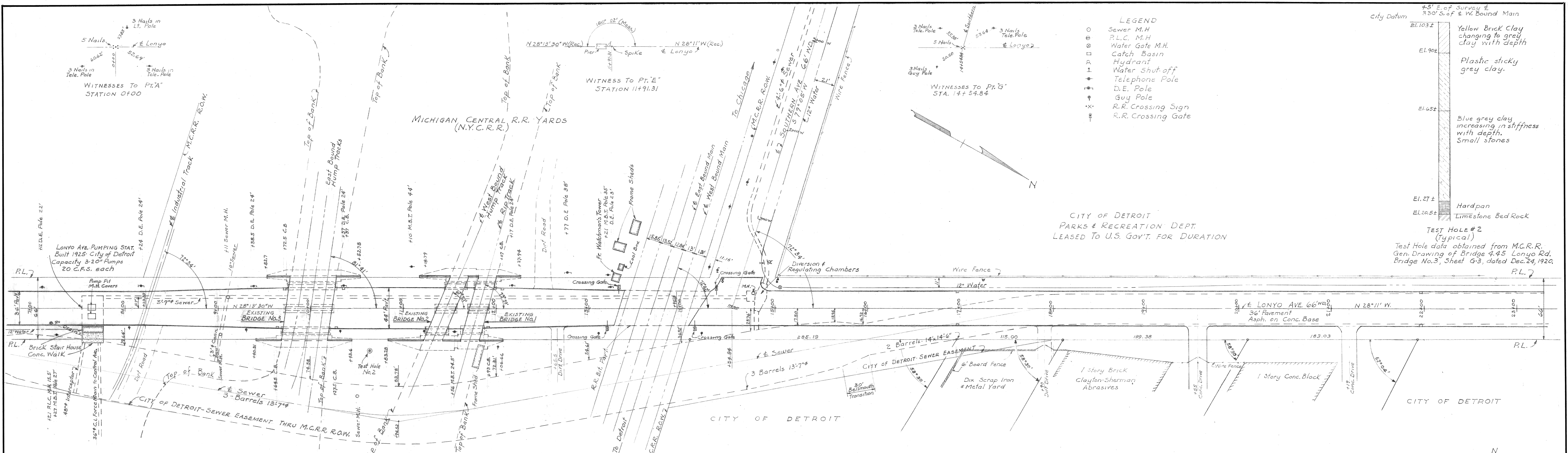
G					REFERENCE DRAWINGS	DESIGNED BY	O. H. LEXAU A. BERARDUCCI	APPROVED:	
F						DRAWN BY	O. H. LEXAU		
E						TRACED BY			
D						ENGINEER OF			
C						CITY ENGINEER			
B									
A									
NOTED BY						CHECKED BY			
	DESCRIPTION	DRW	CHKD	APVD	DATE				
	REVISIONS								

CITY OF DETROIT  
 DEPARTMENT OF PUBLIC WORKS  
 CITY ENGINEERS OFFICE  
 BUREAU OF DESIGN

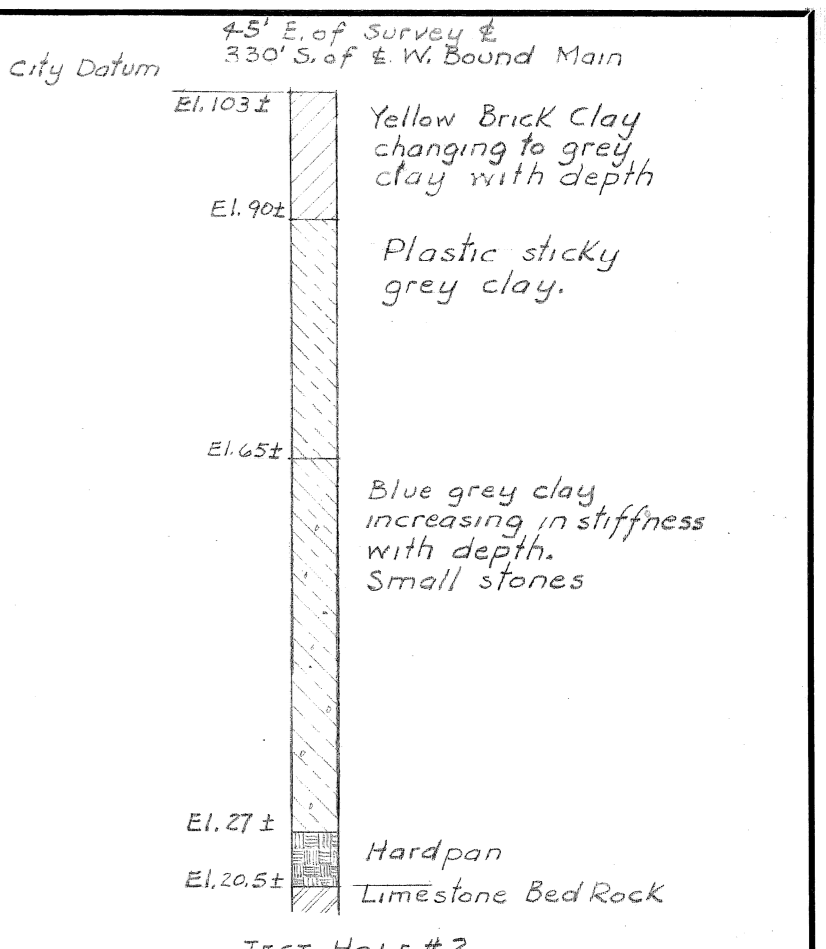
GRADE SEPARATION  
 LONYO ROAD & M.C.R.R. (N.Y.C.R.R.)  
 PRELIMINARY PLAN  
 DETAILS OF STRUCTURES  
 SCHEME 2

SHEET 4 OF 4 SHEETS  
 JOB NO. 43  
 DRWG NO. X-715  
 DATE SEPT. 24, 1945  
 SCALE 1/4" = 1'-0"  
 EXCEPT AS NOTED

5-17-45  
 P. 6-11-45  
 P. 6-21-45  
 P. 7-5-45  
 P. 7-25-45



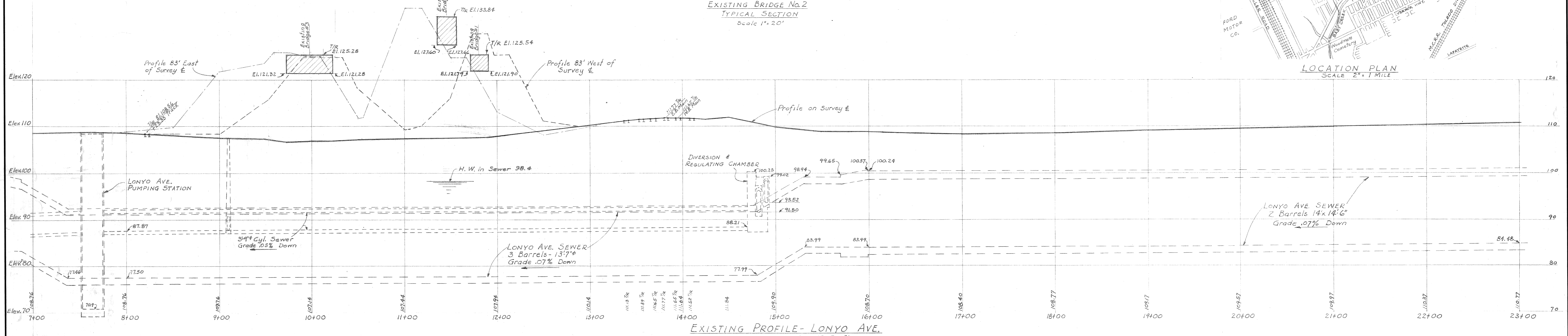
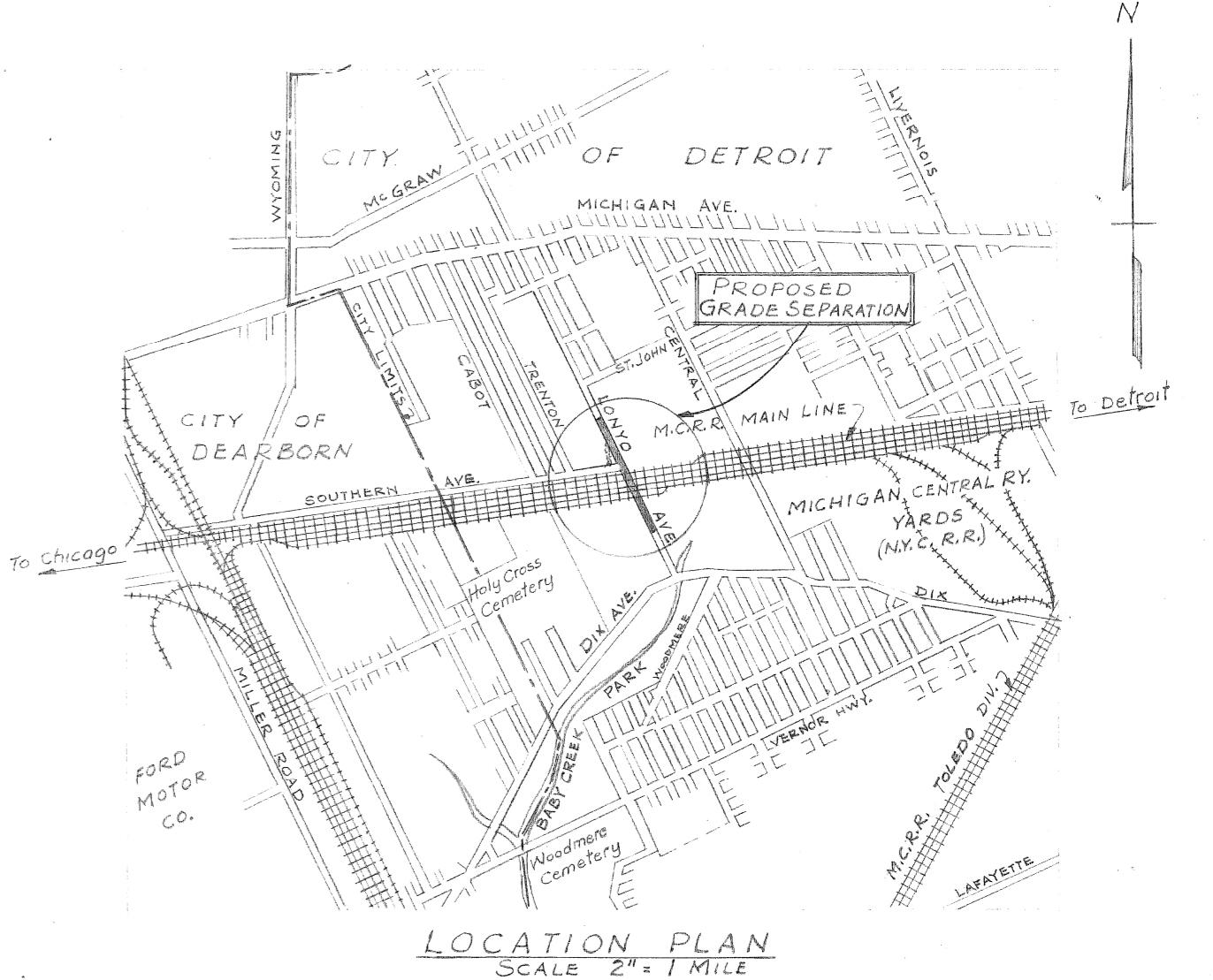
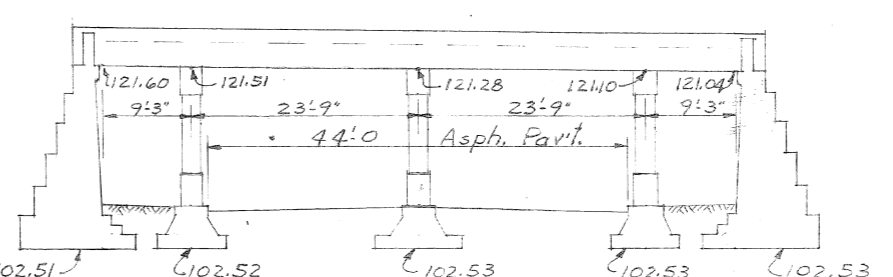
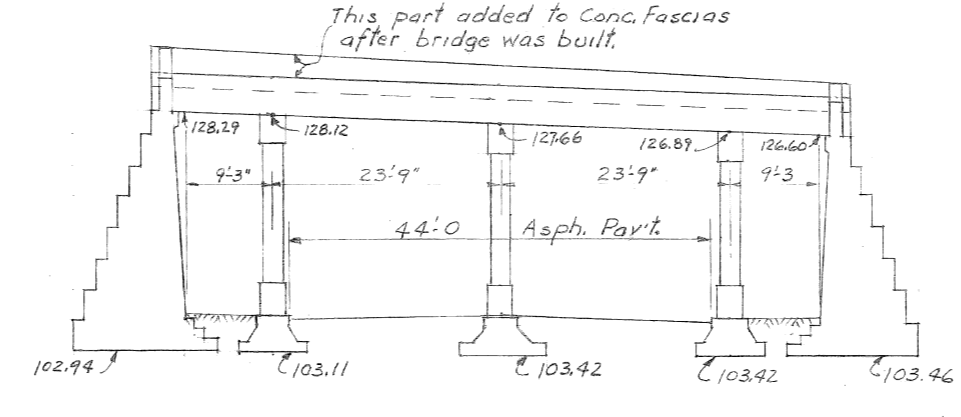
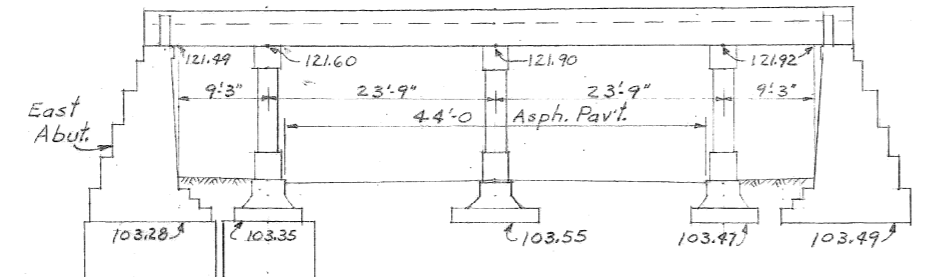
- LEGEND**
- Sewer M.H.
  - P.L.C. M.H.
  - Water Gate M.H.
  - Catch Basin
  - Hydrant
  - Water Shut off
  - ⊕ Telephone Pole
  - ⊕ D.E. Pole
  - ⊕ Guy Pole
  - ⊕ R.R. Crossing Sign
  - ⊕ R.R. Crossing Gate



CITY OF DETROIT  
 PARKS & RECREATION DEPT.  
 LEASED TO U.S. GOV'T. FOR DURATION

TEST HOLE #2  
 (Typical)  
 Test Hole data obtained from M.C.R.R.  
 Gen. Drawing of Bridge 445 Lonyo Rd.  
 Bridge No. 3, Sheet 5-3, dated Dec. 24, 1920.

Note: Station 0+00 is designated as point 'A', located on the E of Lonyo Ave. approx. 380' North of the north line of Dix Ave. Point 'A' consists of 5 nails driven into the pavement.  
 Bench Mark - City of Detroit P.L.B.M. No. 4-250-A Northwest corner of Trenton and Southern Aves. Elev. 107.17  
 Reference Drawings:  
 City of Detroit Sewer Dwg.; Lonyo Rd. Sewer Dwg. #297 to #313 incl. and #319 to 322 incl. dates vary 1919 to 1925  
 M.C.R.R. Main Line; Dwg. of Bridge 445, Lonyo Rd. Bridges No. 1, 2 & 3. Detail Dwg. dated 1913; General Dwg. dated 1920.  
 Field Books No. 793 & No. 1631



Note: Sewer Profile shown on E of Sewer.

NOTED BY	DESCRIPTION	DN	CHK	APVD	DATE

REFERENCE DRAWINGS	DESIGNED BY	APPROVED:
	J.R. Pentony A. Berarducci	
	DRAWN BY	
	TRACED BY	
	CHECKED BY	

**CITY OF DETROIT**  
 DEPARTMENT OF PUBLIC WORKS  
 CITY ENGINEERS OFFICE  
 BUREAU OF DESIGN

GRADE SEPARATION  
 LONYO AVE. & M.C.R.R. (N.Y.C.R.R.)  
 PRELIMINARY PLAN  
 SURVEY AND LOCATION PLAN

SHEET 1 OF 2 SHEETS  
 JOB No. 43  
 DRWG No. X-708  
 DATE July 26, 1945

SCALE - AS NOTED

Draw #1

GS-RR-32 C-10