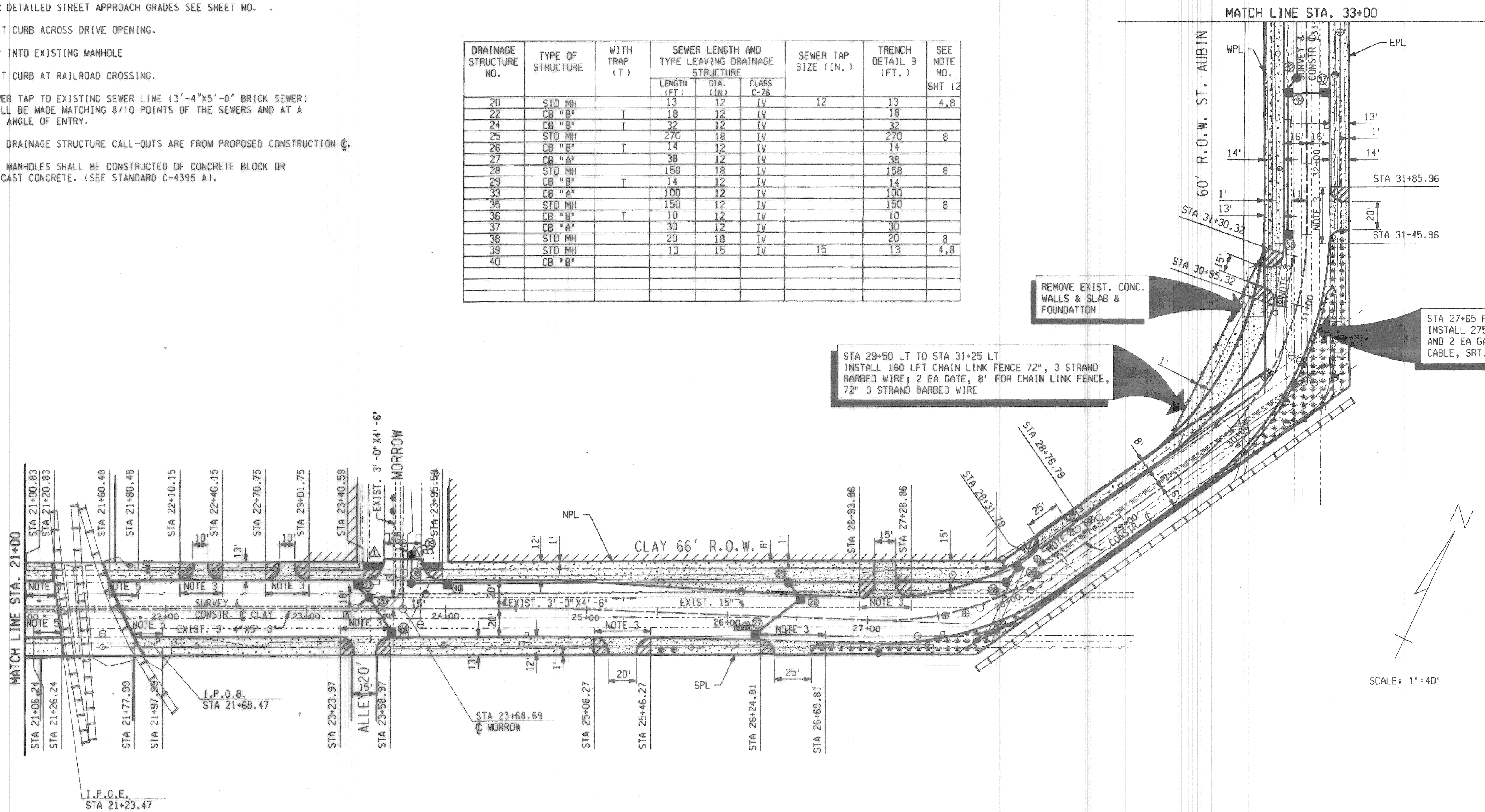


NOTES:

- FOR TYPICAL SECTIONS SEE SHEETS AND .
- FOR DETAILED STREET APPROACH GRADES SEE SHEET NO. .
- OMIT CURB ACROSS DRIVE OPENING.
- TAP INTO EXISTING MANHOLE
- OMIT CURB AT RAILROAD CROSSING.
- SEWER TAP TO EXISTING SEWER LINE (3'-4"x5'-0" BRICK SEWER) SHALL BE MADE MATCHING 8/10 POINTS OF THE SEWERS AND AT A 45° ANGLE OF ENTRY.
- ALL DRAINAGE STRUCTURE CALL-OUTS ARE FROM PROPOSED CONSTRUCTION C.
- ALL MANHOLES SHALL BE CONSTRUCTED OF CONCRETE BLOCK OR PRECAST CONCRETE. (SEE STANDARD C-4395 A).

DRAINAGE STRUCTURE NO.	TYPE OF STRUCTURE	WITH TRAP (T)	SEWER LENGTH AND TYPE LEAVING DRAINAGE STRUCTURE			SEWER TAP SIZE (IN.)	TRENCH DETAIL B (FT.)	SEE NOTE NO.
			LENGTH (FT)	DIA. (IN.)	CLASS C-76			
20	STD MH		13	12	IV	12	13	4,8
22	CB "B"	T	18	12	IV		18	
24	CB "B"	T	32	12	IV		32	
25	STD MH		270	18	IV		270	8
26	CB "B"	T	14	12	IV		14	
27	CB "A"		38	12	IV		38	
28	STD MH		158	18	IV		158	8
29	CB "B"	T	14	12	IV		14	
33	CB "A"		100	12	IV		100	
35	STD MH		150	12	IV		150	8
36	CB "B"	T	10	12	IV		10	
37	CB "A"		30	12	IV		30	
38	STD MH		20	18	IV		20	8
39	STD MH		13	15	IV	15	13	4,8
40	CB "B"							



ST. AUBIN Clay to Denton
 (see Clay for full set)#40938A



ref:\h\16657\english\mstest\proposed.dgn
 levels on: 1-63
 levels on: 1-63
 levels on: 1-63
 levels on: 1-63
 FILENAME: H:\16657\ENGLISH\PL\ANPRO9.DGN: 04/23/98: 15:43:22

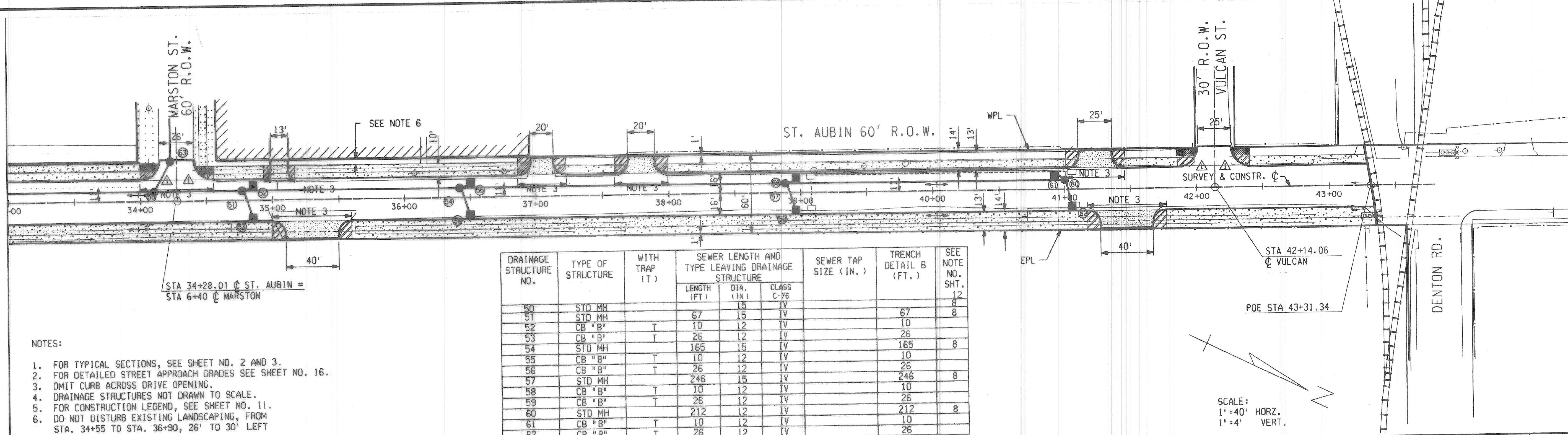
DESCRIPTIONS	DR'N	CK'D	AP'VD	DATE	BY	CHECKED BY	APPROVED:
					CMK	JWF/DPM	ENGINEER OF STREETS
PLAN							
GRADE							
ESTIMATE					JWF	DPM	
REVISIONS					CHECK	REVIEW	

CITY OF DETROIT
 DEPARTMENT OF TRANSPORTATION
 TRANSPORTATION ENGINEERING

RECONSTRUCTION OF CLAY / ST. AUBIN
 FROM NB I-75 (CHRYSLER) SERVICE DRIVE TO SOUTH OF DENTON
 PAVING PLAN STA 21+00 TO STA 33+00

SHEET 12 OF 26 SHEETS
 CONTRACT NO.
 ASSIGNMENT NO.
 DATE **APRIL 1998**

MATCH LINE STA. 33+00

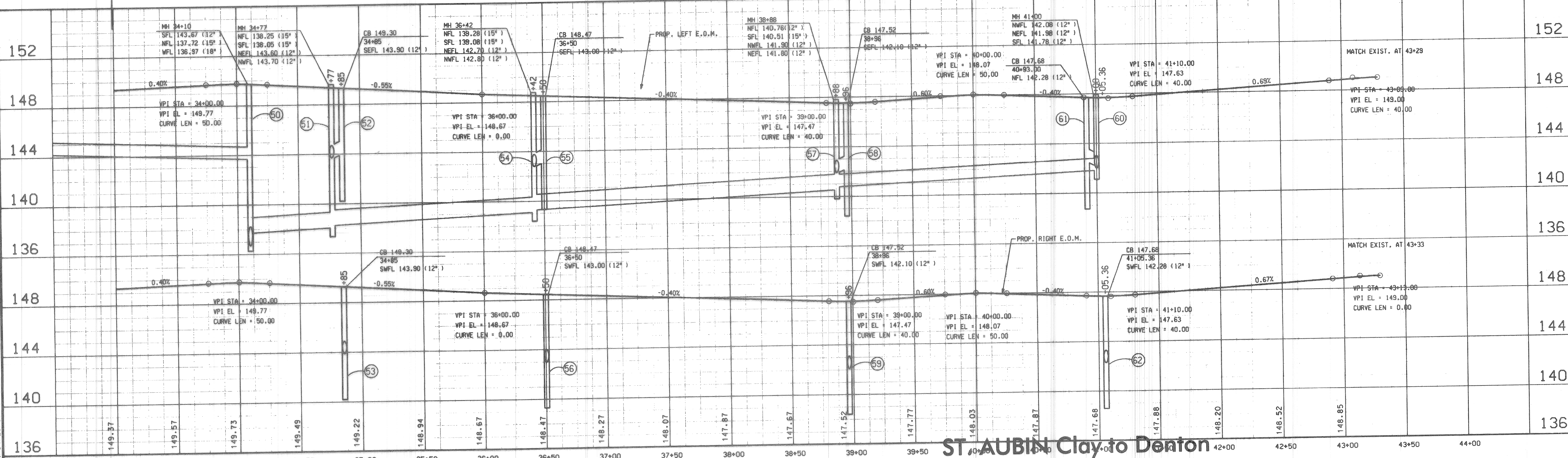


NOTES:

1. FOR TYPICAL SECTIONS, SEE SHEET NO. 2 AND 3.
2. FOR DETAILED STREET APPROACH GRADES SEE SHEET NO. 16.
3. OMIT CURB ACROSS DRIVE OPENING.
4. DRAINAGE STRUCTURES NOT DRAWN TO SCALE.
5. FOR CONSTRUCTION LEGEND, SEE SHEET NO. 11.
6. DO NOT DISTURB EXISTING LANDSCAPING, FROM STA. 34+55 TO STA. 36+90, 26' TO 30' LEFT

DRAINAGE STRUCTURE NO.	TYPE OF STRUCTURE	WITH TRAP (T)	SEWER LENGTH AND TYPE LEAVING DRAINAGE STRUCTURE			SEWER TAP SIZE (IN.)	TRENCH DETAIL B (FT.)	SEE NOTE NO. SHT.
			LENGTH (FT)	DIA. (IN)	CLASS C-76			
50	STD MH		67	15	IV		8	
51	STD MH		10	12	IV	67	8	
52	CB "B"	T	10	12	IV	10		
53	CB "B"	T	26	12	IV	26		
54	STD MH		165	15	IV	165	8	
55	CB "B"	T	10	12	IV	10		
56	CB "B"	T	26	12	IV	26		
57	STD MH		246	15	IV	246	8	
58	CB "B"	T	10	12	IV	10		
59	CB "B"	T	26	12	IV	26		
60	STD MH		212	12	IV	212	8	
61	CB "B"	T	10	12	IV	10		
62	CB "B"	T	26	12	IV	26		

SCALE:
1" = 40' HORZ.
1" = 4' VERT.



ST. AUBIN Clay to Denton
(see Clay for full set) #40938A



ref:\h\16657\english\master\dgn\223\349.dgn
 levels on=57, h=16, lb=22,34,36,37,38,40,42,56,58,63
 levels off=14,7,9,11,16,18,25,47,63
 FILENAME: H:\16657\ENGLISH\PLAN\PRC4.DGN: 04/23/98: 15:45:54

REVISIONS		BY	CHECKED BY	APPROVED:	CITY OF DETROIT DEPARTMENT OF TRANSPORTATION TRANSPORTATION ENGINEERING	RECONSTRUCTION OF CLAY / ST. AUBIN FROM NB I-75 (CHRYSLER) SERVICE DRIVE TO SOUTH OF DENTON PAVING PLAN AND PROFILES - STA. 33+00 TO P.O.E.	SHEET 14 OF 26 SHEETS
PLAN		CMK	JWF / DPM	ENGINEER OF STREETS			CONTRACT NO.
GRADE		JWF	DPM				ASSIGNMENT NO.
ESTIMATE		JWF	DPM				DATE APRIL 1998
DESCRIPTIONS	DR'N	CK'D	AP'VD	DATE	CHECK	REVIEW	