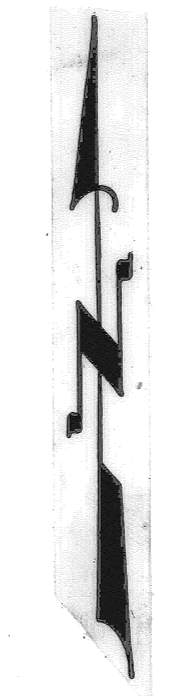
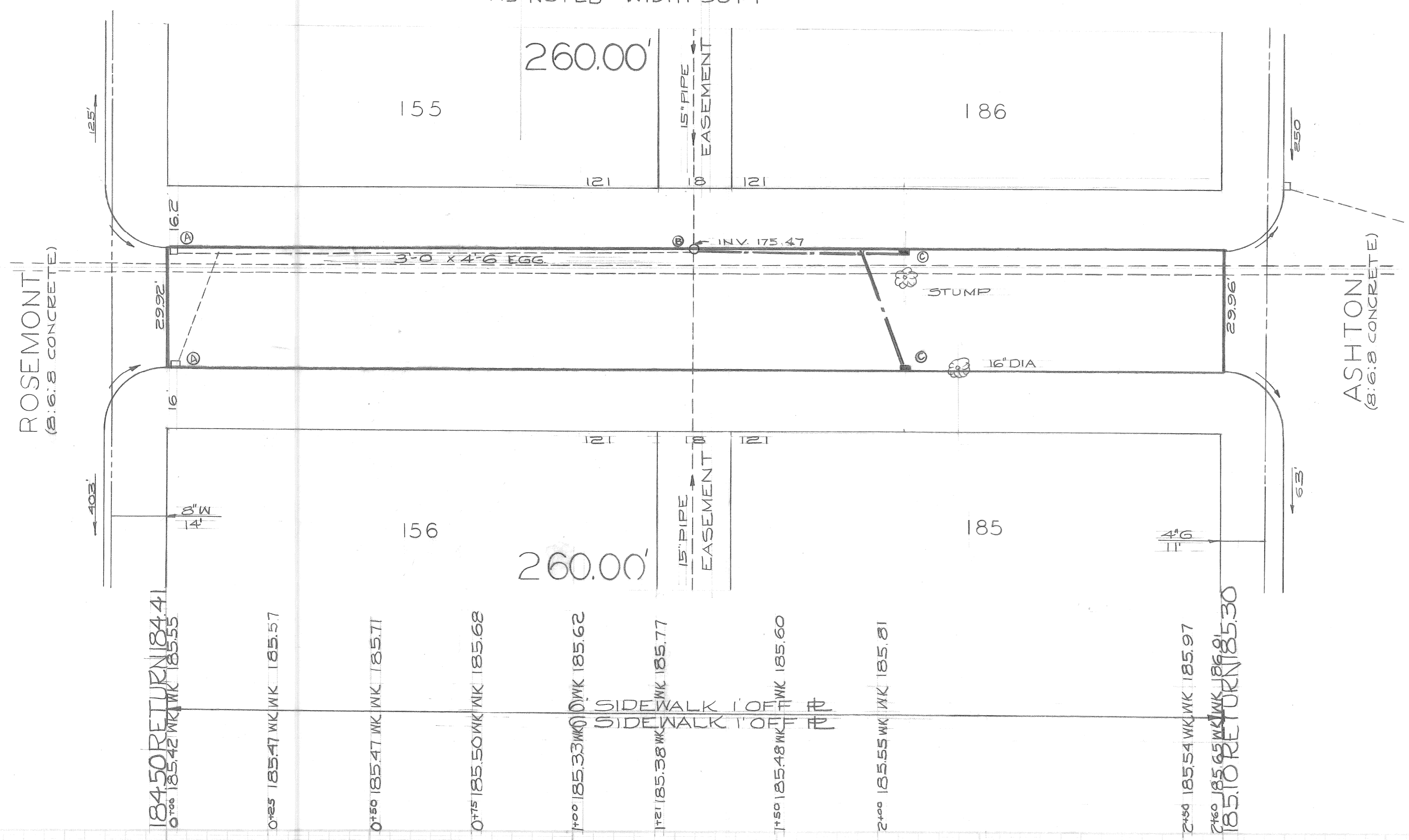


TYPE OF PAVEMENT	8:6:8 ONE COURSE CONCRETE	LOTS 2L	520.00	LENGTH	260.00
	INTEGRAL CURB 8" UNIFORM AT STREET INTERSECTION EXCEPT AS NOTED WIDTH 30 FT	CITY 2L	0.00	LENGTH	0.00
		TOTAL 2L	520.00	LENGTH	260.00

SCALE	HORIZONTAL 1" = 20'	VERTICAL 1" = 2'	BOOK NO. L1105C3	LEVEL PG.	DATE 7-21-70
			NO.	PAVING COMPLETED	

BEFORE STARTING CONSTRUCTION CONTRACTOR MUST CHECK WITH UTILITIES FOR LOCATIONS OF EXISTING STRUCTURES WHETHER OR NOT INDICATED ON PLANS.

NOTE - FOR SYMBOLS (A) ETC. SEE STANDARD DETAIL DRAWING NO. C-4371



BENCH MARKS ELEV.

P.L.B.M #105-11-93 S.W. COR. 8 MILE AND SOUTHFIELD BRIDGE 188.950

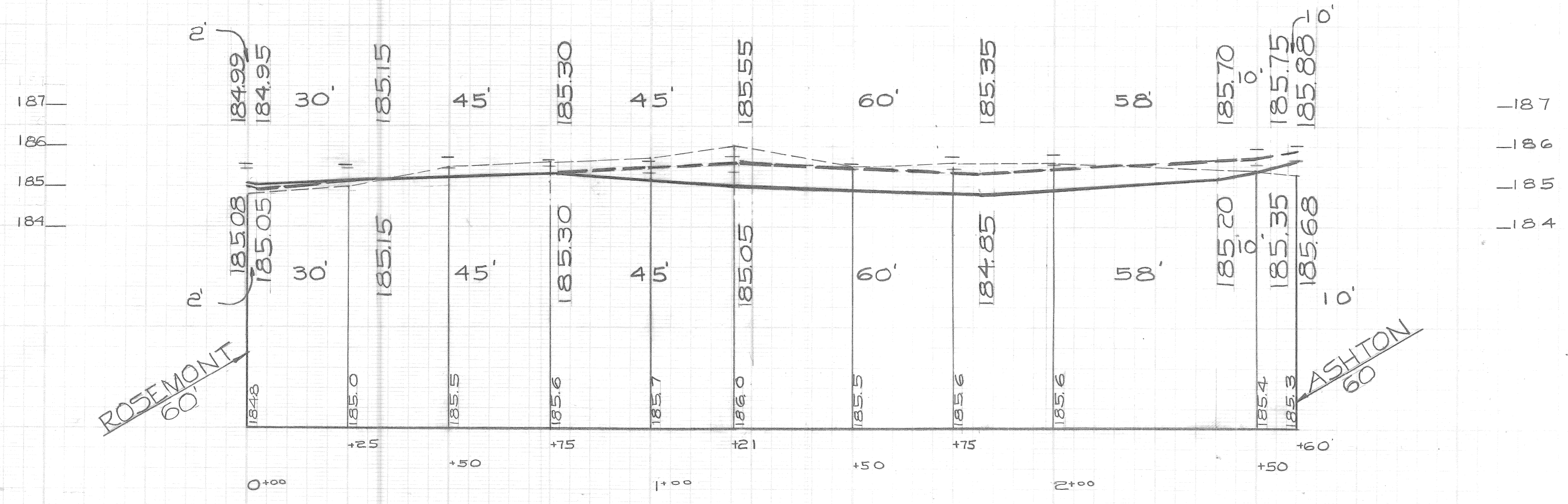
P.L.B.M #105-10-93 S.W. COR. BRIDGE SOUTH OF 8 MILE AND SOUTHFIELD. 189.270

C.B.M. ARROW ON HYDRANT S.E. COR. ASHTON AND HESSEL 188.83

C.B.M. ARROW ON HYDRANT N.E. COR. ROSEMONT AND HESSEL 188.55

HORIZONTAL CONTROL
CROSS IN SIDEWALK 5' SOUTH OF N.P. AT ROSEMONT AND HESSEL

- LEGEND
- (A) ADJUST EXISTING CATCH BASIN
 - (B) ADJUST EXISTING MANHOLE
 - (C) CONSTRUCT STD. CATCH BASIN
 - (D) CONSTRUCT STD. MANHOLE
 - (E) ABANDON EXISTING CATCH BASIN
 - (F) GRADE & STONE
 - (G) CONSTRUCT STD. CONC. WALK
 - (H) CONSTRUCT 6" CONC. WALK
 - (I) CONSTRUCT 6" STONE BASE
 - (J) FILL 2" COLD PATCH
 - (K) EXISTING SEWER MANHOLE
 - (L) PROPOSED SEWER MANHOLE
 - (M) EXISTING CATCH BASIN
 - (N) PROPOSED CATCH BASIN



DESCRIPTION	URN	CK'D	AP'D	DATE
REVISIONS				
BY	CHECKED BY	APPROVED:		
PLAN		ENGINEER OF STREETS		
GRADE		ADMINISTRATIVE ENGINEER		
ESTIMATE		HEAD CIVIL ENGINEER		
FINAL	CHECK	REVIEW		

CITY OF DETROIT
DEPARTMENT OF PUBLIC WORKS
CITY ENGINEERS OFFICE
FOR

PAVING OF HESSEL		INDEX NO. 63	SHEET 1 OF 1 SHEETS
FROM EPL OF ROSEMONT TO WPL OF ASHTON		CONTRACT NO. 105	ASSIGNMENT NO. 325 DO-19
PAVING PLAN		INDEXED	DATE