

# WAYNE COUNTY DEPARTMENT OF PUBLIC SERVICES

## IN CO-OPERATION WITH MICHIGAN DEPARTMENT OF TRANSPORTATION

### AND FEDERAL HIGHWAY ADMINISTRATION

#### CONSTRUCTION PLANS FOR PROPOSED FEDERAL AID URBAN PROJECT

FEDERAL NO. MR2057(241)  
ITEM NO. UF 1821  
MICHIGAN PROJECT MUR 82457  
JOB NO. 30947A

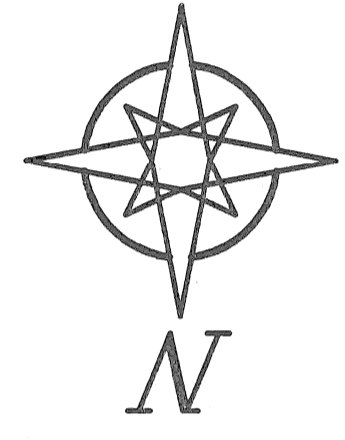
TRAFFIC DATA

2010	1990	A.D.T. (Two Way)	19,000	21,000
		D.H.V. (One Way)	1,200	1,500
		DESIGN SPEED	40 M.P.H.	
		POSTED SPEED	30 M.P.H.	
		COMMERCIAL	3 %	

P.O.E. (S.B.) STA. 68+26  
P.O.E. (N.B.) STA. 50+70

P.O.B. STA. 0-15

1.30 MILES



INDEX OF SHEETS

1	TITLE SHEET
2	TYPICAL CROSS SECTIONS
3-6	PLAN
7-10	PERMANENT SIGNING, LANE LINE MARKING AND CADIEUX RD. STAGE CONSTRUCTION
11	QUANTITY SHEET
12-15	SIGN LEGENDS - CITY OF DETROIT

COUNTY STANDARD PLANS

CD1-89
CD2-89
CM2-89
CP1-89
CP2-89
CP3-89
CP4-89
CP5-89
CR1-89
CR1-89
CS1-89

M.D.O.T. STANDARD PLANS

II - 29E
II - 40G
VI - 125G

WAYNE COUNTY DEPARTMENT OF PUBLIC SERVICES

IN CO-OPERATION WITH

MICHIGAN DEPARTMENT OF TRANSPORTATION

AND

FEDERAL HIGHWAY ADMINISTRATION

CONSTRUCTION PLANS FOR PROPOSED

FEDERAL AID URBAN PROJECT

FEDERAL NO. MR2057(241)

ITEM NO. UF 1821

MICHIGAN PROJECT MUR 82457

JOB NO. 30947A

FED. PROJ. NO.	WAYNE	MR 2057(241)
CITY	WAYNE	POINTE
SHEET NO.	1	25
TOTAL SHEETS		

THE IMPROVEMENTS COVERED BY THESE PLANS SHALL BE DONE IN ACCORDANCE WITH THE MICHIGAN DEPARTMENT OF TRANSPORTATION 1984 STANDARD SPECIFICATIONS FOR CONSTRUCTION AND SUPPLEMENTAL SPECIFICATIONS.

MACK AVE.  
AND WARREN RD. (S.B.D.)  
AND FISHER RD. (N.B.D.)  
ITEM NO. UF 1821  
CONTRACT FOR BITUMINOUS AGGREGATE RESURFACING

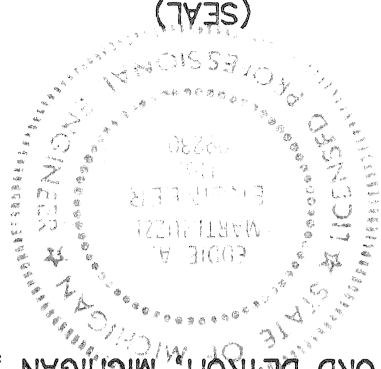
WAYNE COUNTY APPROVAL

DIRECTOR OF ENGINEERING	DATE
COUNTY HIGHWAY ENGINEER	7-27-1994
DIVISION DESIGN ENGINEER	DATE
ENGINEERING DIVISION	7-27-1994

PREPARED UNDER SUPERVISION OF

ASSISTANT DIVISION DESIGN ENGINEER  
REGISTRATION NO.

WAYNE COUNTY DEPARTMENT OF PUBLIC SERVICES  
ENGINEERING DIVISION  
415 CUFFORD DETROIT, MICHIGAN, 48226



BEFORE YOU DIG  
CALL MISS DIG  
800-482-7171  
(TOLL FREE)

CITY OF GROSSE POINTE

APPROVED DATE 8-6-1990  
APPROVED DATE 8-6-1990

FILE NO. F-8-5  
W.O. NO. 46243  
SHEET NO. 1

MR 2057 (241) ITEM NO. UF 1821 MUR 82457 JOB NO. 30947A

MACK-CADIEUX TO WARREN

### GENERAL NOTES

The location of all Utilities shown on these plans is taken from the best available data. The Wayne County Department of Public Utilities will not be responsible for any omissions or variations from the locations shown. The contractor shall contact the utility owners regarding these facilities including service connections prior to starting the work. Utility service connections are not shown on the plans and are not the responsibility of Wayne County Department of Public Utilities.

Existing castings damaged by the contractor shall be replaced by the contractor at his own expense. Moving hydrants and adjusting to grade all private utility structures will be done by owner (Michigan Bell Telephone Co., City of Grosse Pointe, Motor Dept., Michigan Consolidated Gas Co., Detroit Edison Co.) All sewers shall be placed within the particular trench type noted on the plans. Where the particular trench type has not been called for, the requirements for trench 'B' shall govern.

The edge of existing pavement shall be cleaned of earth or other foreign material with a wire broom before adjacent pours are placed. Street or road name signs and stop signs, in the way of construction, will be removed and reset immediately in a temporary location. Street name signs shall be finally set by the contractor in a location designated by the Engineer, upon completion of fine grading in the section involved. This work shall be included in the pay item "Sign, Type B, Permanent".

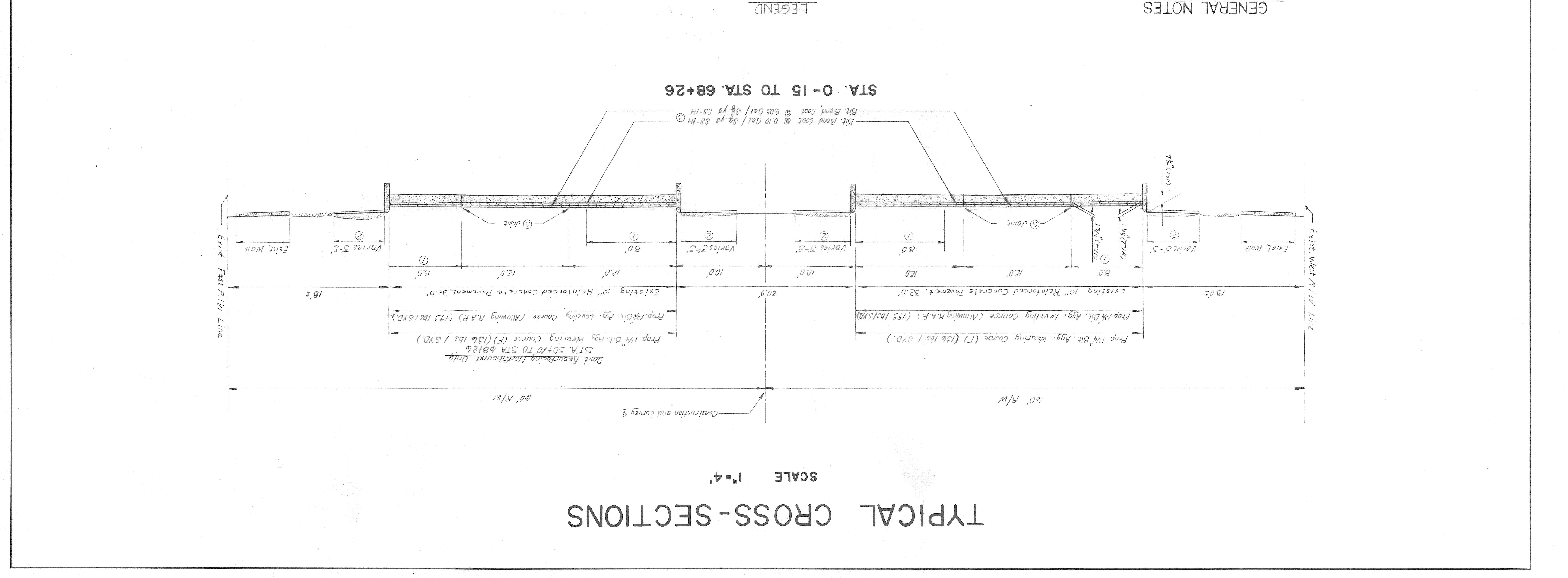
When detail 'A' is required as shown by County Standard Plan CPT-89, this work will not be paid for separately but shall be included in concrete pavement or concrete base course.

### NOTES

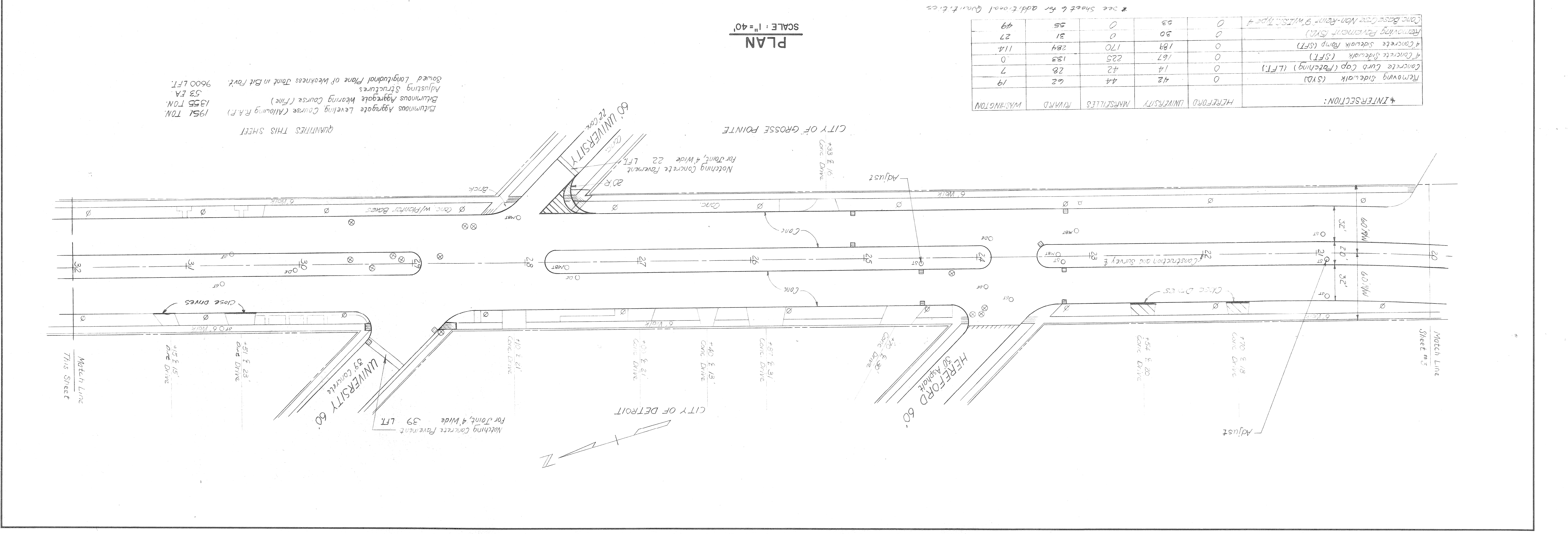
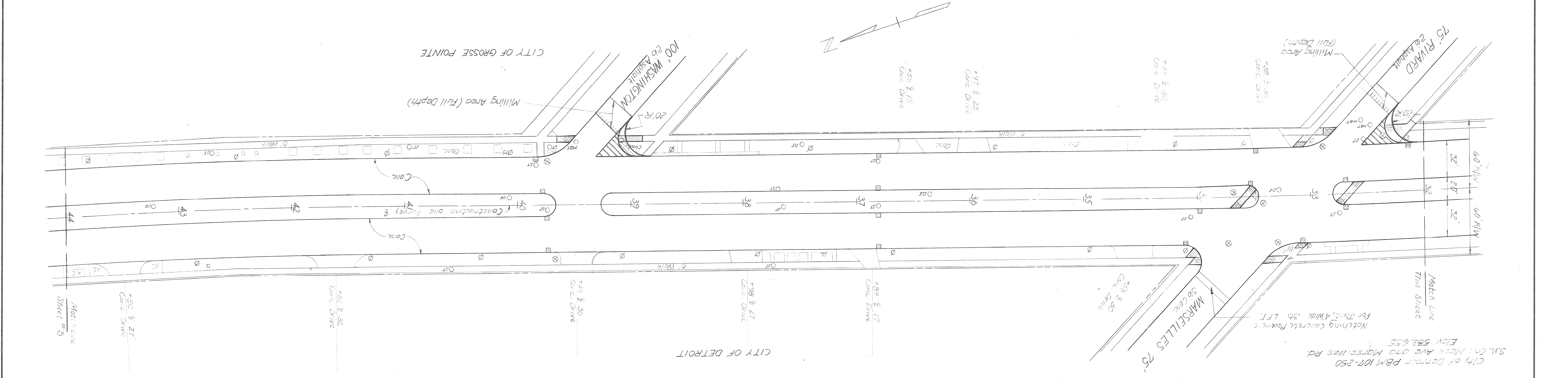
① The leveling course shall be tapered down in the last 8' adjacent to the curb from 1 1/4" to maintain a min. of 1/2" curb face.

② 333 SYD of Class A Sodding have been provided for placement as directed by the Engineer. Removal of the Overburden is included with "Class A Sodding"; The quantity of Overburden is estimated to be 47 CYD. Top of Sod to be flush with Top of Curb, or as directed by the Engineer.

③ Bituminous Bond Coat SS-1H will not be paid for separately and shall be considered included in the bituminous aggregate course being applied.





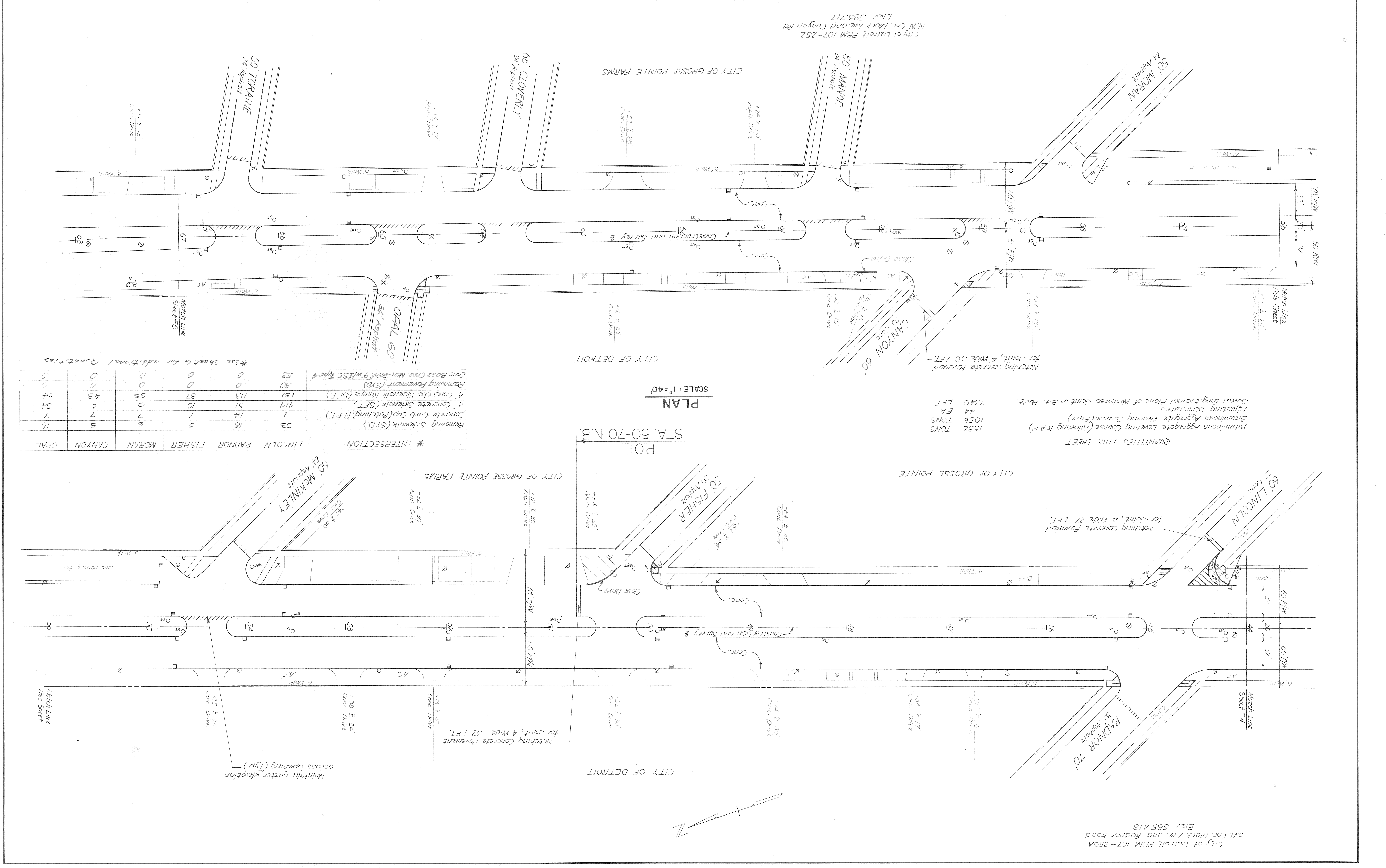


PLAN  
 SCALE: 1" = 40'

\* See Sheet 6 for additional quantities

INTERSECTION:	HEREFORD UNIVERSITY	MARSEILLES RIVARD	UNIVERSITY	WASHINGTON
Removing sidewalk (SYD)	0	42	44	62
Concrete curb cap (Patching) (L.F.T.)	0	14	42	28
4' Concrete Sidewalk (S.F.T.)	0	167	225	135
4' Concrete sidewalk ramp (S.F.T.)	0	189	170	284
Removing Pavement (SYD)	0	30	0	31
Conc. Base Course Non-Rein 9" W.I.S.S. Type #	0	53	0	55
				49

QUANTITIES THIS SHEET  
 Bituminous Aggregate Leveling Course (Allowing R.A.F.) 1951 TON  
 Diluminous Aggregate Wearing Course (Fine) 1355 TON  
 Adjusting Structures 53 EA  
 Soiled Longitudinal Flange of Weakness Joint in Bit Pavt. 9600 L.F.T.



PLAN  
 SCALE: 1"=40'

\* INTERSECTION:

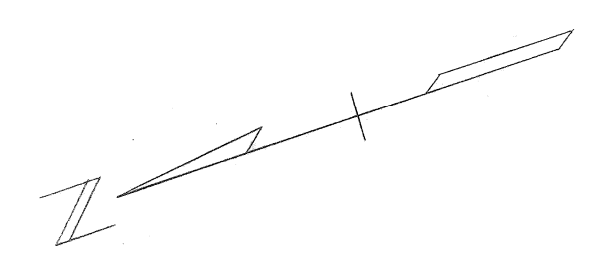
LINCOLN	RADNOR	FISHER	MORAN	CANYON	OPAL
53	18	5	6	5	16
Removing Sidewalk (STD.)	414	51	10	0	84
Concrete Curb Cap (Fatching) (L.F.T.)	7	14	7	7	7
4" Concrete Sidewalk (SFT)	121	37	55	43	64
Removing Pavement (STD)	30	0	0	0	0
Conc Base Crsr. Non-Reinf. 9" W/ISC Type 4	53	0	0	0	0

\* See Sheet 6 for additional Quantities

QUANTITIES THIS SHEET  
 Bituminous Aggregate Leveling Course (Allowing R.A.F.) 1532 TONS  
 Bituminous Aggregate Wearing Course (Fine) 1056 TONS  
 Adjusting Structures 44 EA.  
 Sowed Longitudinal Plane of Weardress Joint in Bit. Pavt. 7340 L.F.T.

City of Detroit PBM 107-252  
 N.W. Cor. Mack Ave and Canyon Rd.  
 Elev. 583.717

City of Detroit PBM 107-350A  
 SW Cor. Mack Ave. and Radnor Road  
 Elev. 585.418

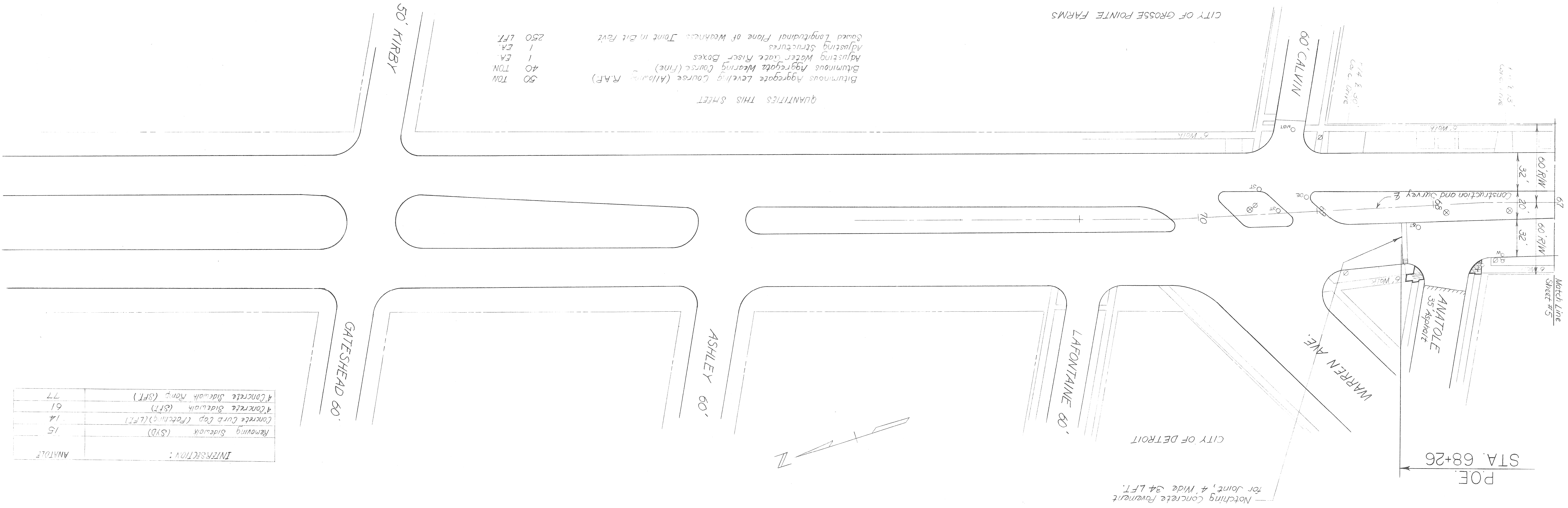


CITY OF DETROIT FBM 107-252A  
 SW Cor. Mack Ave. and Anatole Road  
 Elev. 583.863

POE STA. 68+26

Notching Concrete Pavement  
 for Joint, 4' Wide 34' LFT.

CITY OF DETROIT



QUANTITIES THIS SHEET

- 50 TON Bituminous Aggregate Leveling Course (Allowing R.A.F.)
- 40 TON Bituminous Aggregate Wearing Course (Fine)
- 1 EA Adjusting Water Riser Boxes
- 1 EA Adjusting Structures
- 50 TON Gouge Longitudinal Plane of Weakness Joint in Bit Pavt

PLAN  
 SCALE: 1"=40'

MISC. QUANTITIES ENTIRE PROJECT

- 50 CYD Subgrade Undercutting
- 30 CYD Borrow Excavation (C.I.P.)
- 11% STA. Preparing Existing Pavement
- 100 TON Bituminous Aggregate Base Course (Allowing R.A.F.)
- 75 SYD Concrete Pavement Repair (Fatching)
- 4 EA. Adjusting Structures, Furnishing Covers A
- 8 EA. Adjusting Structures, Furnishing Covers S
- 10 LFT. Reconstructing Structures
- 10 LFT. Concrete Curb Cap (Fatching)
- 270 LFT. Cold Patching Mixture
- 10 TON Cold Weather Protection
- 589 SYD Calcium Chloride for Cold Weather Protection

MISC. QUANTITIES FOR RADIUS CHANGES

- 138 EA. Earth Excavation
- 66 CYD Class A Sodding
- 42 SYD Topsoil Surface, 3"

WAYNE COUNTY DEPARTMENT OF PUBLIC SERVICES ENGINEERING DIVISION		MACK AVENUE CADIEUX RD. TO WARREN AVE.		DATE: 8-3-90 ISSUE NO: / SHEET NO: 6	
DRAWN BY: DTJ CHECKED BY: DTJ DATE: 8-3-90		CORRECT		SQUAD LEADER	
APPROVED: [Signature] ASSIST. DIVISION DESIGN ENGINEER		CORRECT		DIVISION DESIGN ENGINEER	

MACK AVENUE CADIEUX RD. TO WARREN AVE.		DATE: 8-3-90 ISSUE NO: / SHEET NO: 6	
DRAWN BY: DTJ CHECKED BY: DTJ DATE: 8-3-90		CORRECT	
APPROVED: [Signature] ASSIST. DIVISION DESIGN ENGINEER		CORRECT	

1-8-5

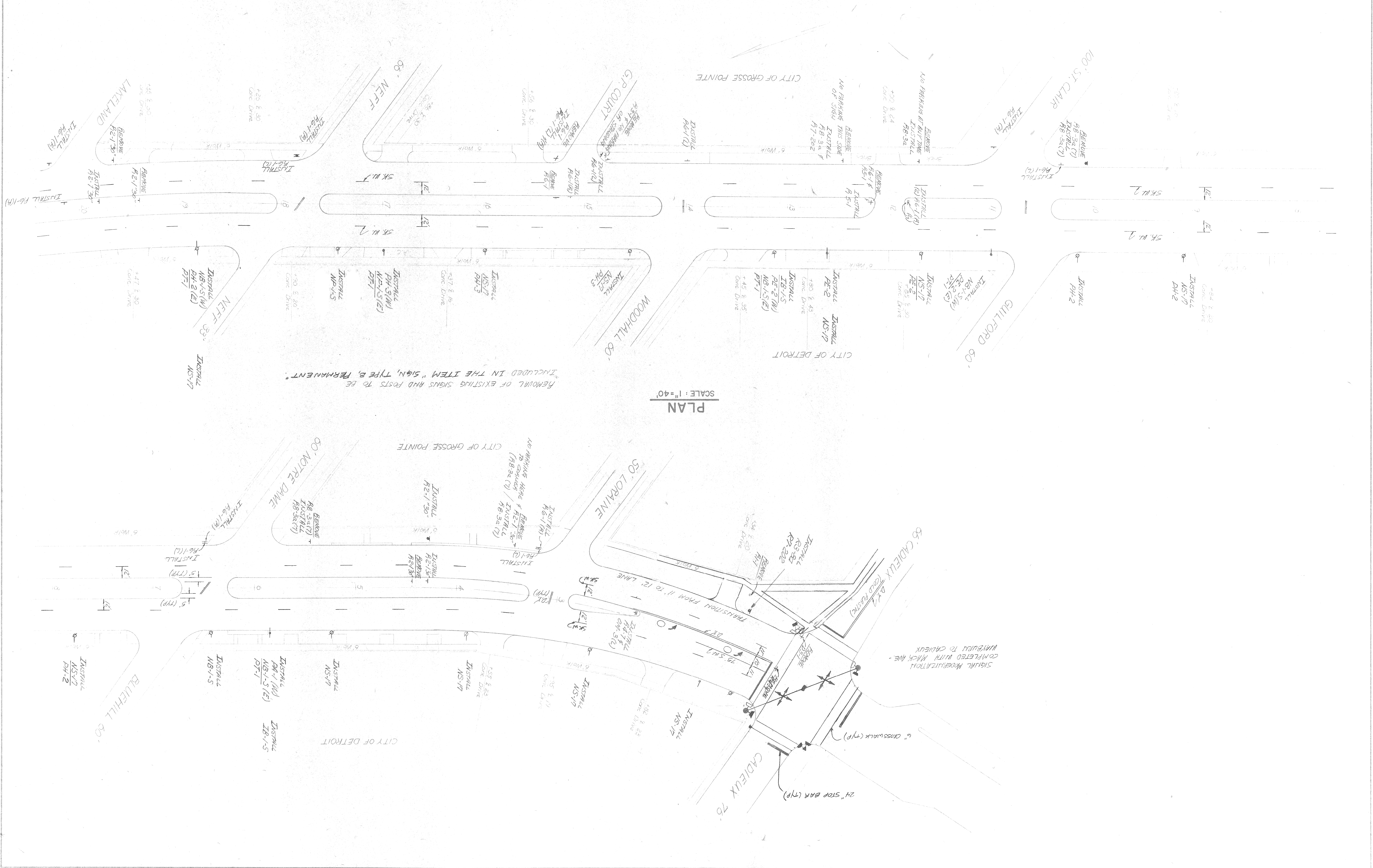
REVISIONS

DRAWN BY	GG
CHECKED BY	DJA
DATE	8-3-90
APPROVED	<i>Colin A. M... Squad Leader</i>

WAYNE COUNTY OFFICE OF PUBLIC SERVICES  
ENGINEERING DIVISION

MACK AVENUE  
CADIEUX RD TO WARREN AVE.  
LANE LINE MARKING & PERMANENT SIGNING

COUNTY PROJECT 46243  
SHEET NO. 7  
DATE 8-3-90

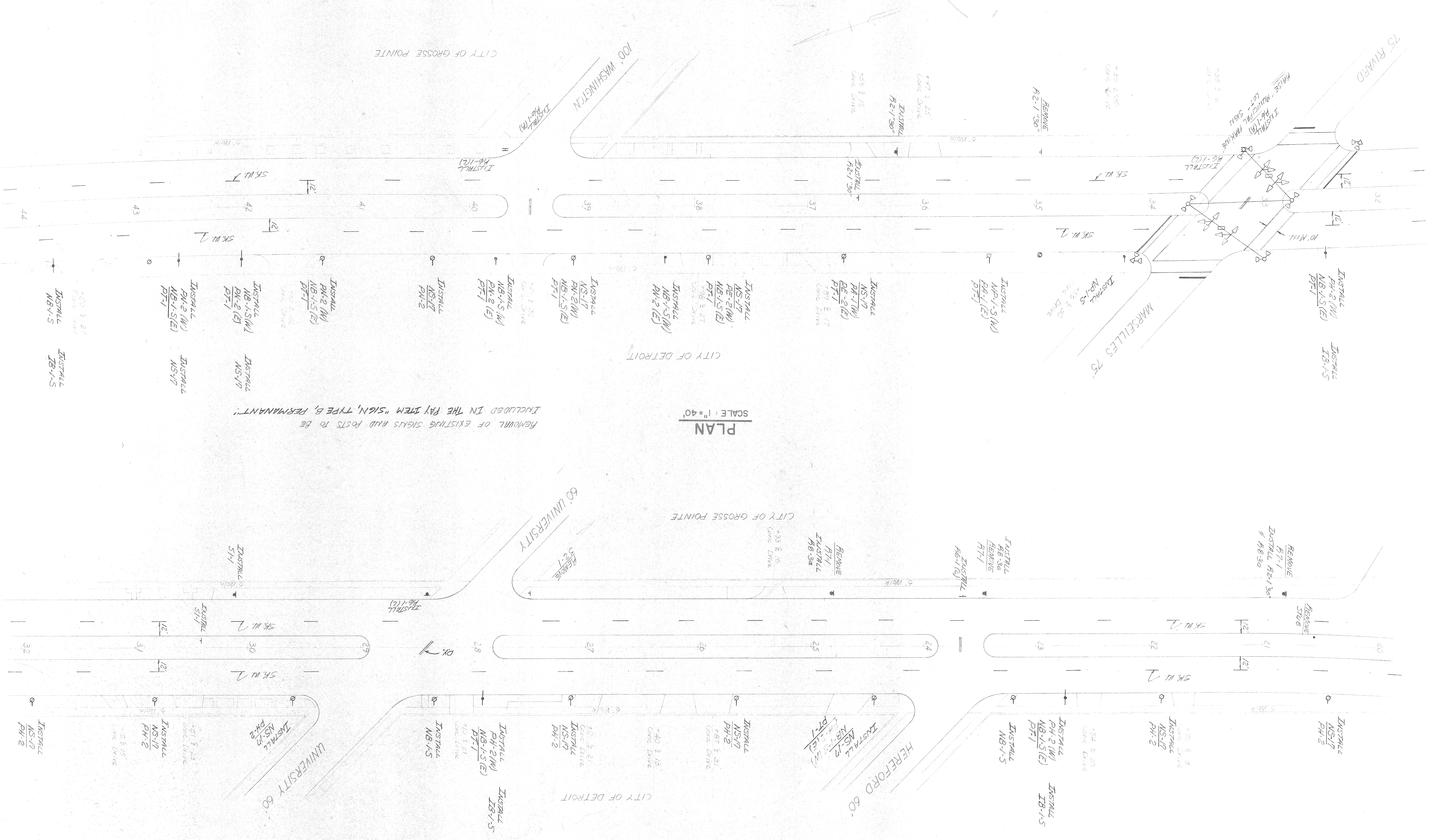


PLAN  
SCALE: 1"=40'

DATE	CHECKED BY	DATE	CHECKED BY
8-3-76	DJM	8-3-76	DJM
DATE	CHECKED BY	DATE	CHECKED BY
8-3-76	DJM	8-3-76	DJM
DATE	CHECKED BY	DATE	CHECKED BY
8-3-76	DJM	8-3-76	DJM

WAYNE COUNTY OFFICE OF PUBLIC SERVICES  
ENGINEERING DIVISION

MACK AVENUE  
CADIEUX RD. TO WARREN AVE  
LANE LINE MARKING & PERMANENT SIGNING



PLAN  
SCALE: 1"=40'

REMOVAL OF EXISTING SIGNS AND POSTS TO BE INCLUDED IN THE PAY ITEM "SIGN, TYPE B, PERMANENT"

CITY OF GROSSE POINTE

CITY OF DETROIT

CITY OF GROSSE POINTE

CITY OF DETROIT







SUMMARY OF ESTIMATED QUANTITIES

ITEM NUMBER	ITEMS	TOTAL PLAN QUANTITY	UNIT	ENTIRE PROJECT	SHEET NO. 3	SHEET NO. 4	SHEET NO. 5	SHEET NO. 6	SHEET NO. 7 - 10	TOTAL AS-CONSTRUCTED QUANTITY
-------------	-------	---------------------	------	----------------	-------------	-------------	-------------	-------------	------------------	-------------------------------

2070002	Removing Pavement	751	S.YD.	206	427	88		30		
2070003	Removing Curb	392	L.F.T.							
2070006	Removing Sidewalk	411	S.YD.				103	15		
2077020	Removing Old Pavement (Patching)	75	S.YD.							
2080001	Earth Excavation	224	C.YD.							
2087010	Subgrade Undercutting	50	C.YD.							
2087022	Borrow Excavation (C.I.P.)	209	C.YD.							
4007016	Removing Bit. Surface (Milling Method) - Full Depth	1,421	S.YD.							
4007020	Repairing Existing Pavement	119	STA.							
4007053	Bit. Agg. Base Course (Patching) (Allowing R.A.P.)	100	TON							
4007056	Bit. Aggregate Leveling Course (Allowing R.A.P.)	5,266	TON							
4007059	Bituminous Aggregate Wearing Course (F)	3,679	TON							
4007061	Bituminous Aggregate Wearing Course (F) - Drives	56	TON							
4007100	Sawed Longitudl Plane Of Weakness Joint In Bit. Pvt	25,210	L.F.T.							
4007110	Notching Concrete Pavement For Joint	327	L.F.T.							
4037020	Cold Patching Mixture	10	TON							
4500040	Concrete Pavement, Non-Reinforced, 8"	64	S.YD.							
4500296	Expansion - Anchored Lane-Ties	318	EACH							
4507148	Concrete Base Course Non-Reinf. 9" W/I.S.C.(Type 4)	589	S.YD.				53			
4507801	Cold Weather Protection	589	S.YD.							
4507802	Calcium Chloride For Cold Weather Protection	1	TON							
4527000	Concrete Pavement Repair (Patching)	75	S.YD.							
5147003	Adjusting Water Gate Riser Boxes	2	EACH							
5147100	Adjusting Structures	150	EACH				44	1		
5147101	Adjusting Structures, Furnishing Covers A	4	EACH							
5147104	Adjusting Structures, Furnishing Covers S	8	EACH							
5147140	Reconstructing Structures	10	L.F.T.							
6097030	Concrete Curb, Straight	109	L.F.T.							
6097041	Concrete Curb Cap (Patching)	680	L.F.T.	456			91	49	14	
6110002	Concrete Sidewalk	2,112	S.F.T.				525	559	61	
6117020	Concrete Sidewalk Ramps	1,824	S.F.T.				547	757	443	77
6230001	Mobilization	1	L.S.							
6310011	Lighted Arrow, Type A, Furnished	3	EACH							
6310012	Lighted Arrow, Type A, Operated	2	EACH							
6310026	Barricade, Type II, Lighted, Furnished	75	EACH							
6310027	Barricade, Type II, Lighted, Operated	50	EACH							
6310036	Barricade, Type III, Lighted, Furnished	11	EACH							
6310037	Barricade, Type III, Lighted, Operated	7	EACH							
6310054	Minor Traffic Devices	1	L.S.							
6310055	Flag Control	1	L.S.							
6310057	Sign, Type B, Temporary	281	S.F.T.							
6310085	Temporary Pavement Marking, Type R, 4" White	175	L.F.T.							
6310086	Temporary Pavement Marking, Type R, 4" Yellow	200	L.F.T.							
6310087	Temporary Pavement Marking, Type NR, (TAPE), 4" White	1,193	L.F.T.							
6310089	Temporary Pvt Mkg, Type NR (Fast Dry Paint), 4" White	523	L.F.T.							
6310090	Temporary Pvt Mkg, Type NR (Fast Dry Paint), 4" Yellow	280	L.F.T.							
6310250	Cold Plastic Pavement Marking, 4" White	2,650	L.F.T.							
6310251	Cold Plastic Pavement Marking, 4" Yellow	672	L.F.T.							
6310257	Cold Plastic Pavement Marking, 6" Crosswalk	847	L.F.T.							
6310260	Cold Plastic Pavement Marking, 24" Stop Bar	379	L.F.T.							
6310276	Cold Plastic Pavement Mkg, Symbol(Left-Turn Arrow)	2	EACH							
6317300	Sign, Type B, Permanent	177	S.F.T.							
6317303	Sign, Type B, Permanent (City Of Detroit)	364	S.F.T.							
6530001	Class A Sodding	937	S.YD.							
6530014	Topsoil Surface, 3"	604	S.YD.							

DATE: 8-3-90	ISSUE NO. 1	11
SUMMARY OF ESTIMATED QUANTITIES		
MACK AVENUE		
CADIEUX TO WARREN		
COUNTY PROJECT 46243		

WAYNE COUNTY DEPARTMENT OF PUBLIC SERVICES  
ENGINEERING DIVISION

DATE: 8-3-90	DJA	MHC
ASSISTANT DIVISION DESIGN ENGINEER	DIVISION DESIGN ENGINEER	SQUAD LEADER
CORRECT	CORRECT	CORRECT

F-8-5

REVISIONS

DATE	DESIGNED BY	DRAWN BY	CHECKED BY	DATE	CORRECT
ASSISTANT DIVISION DESIGN ENGINEER			APPROVED		
DIVISION DESIGN ENGINEER			CORRECT		

WAYNE COUNTY DEPARTMENT OF PUBLIC SERVICES  
ENGINEERING DIVISION

SIGN LEGENDS-CITY OF DETROIT  
MACK AVE.  
CADIEUX RD. TO WARREN AVE.

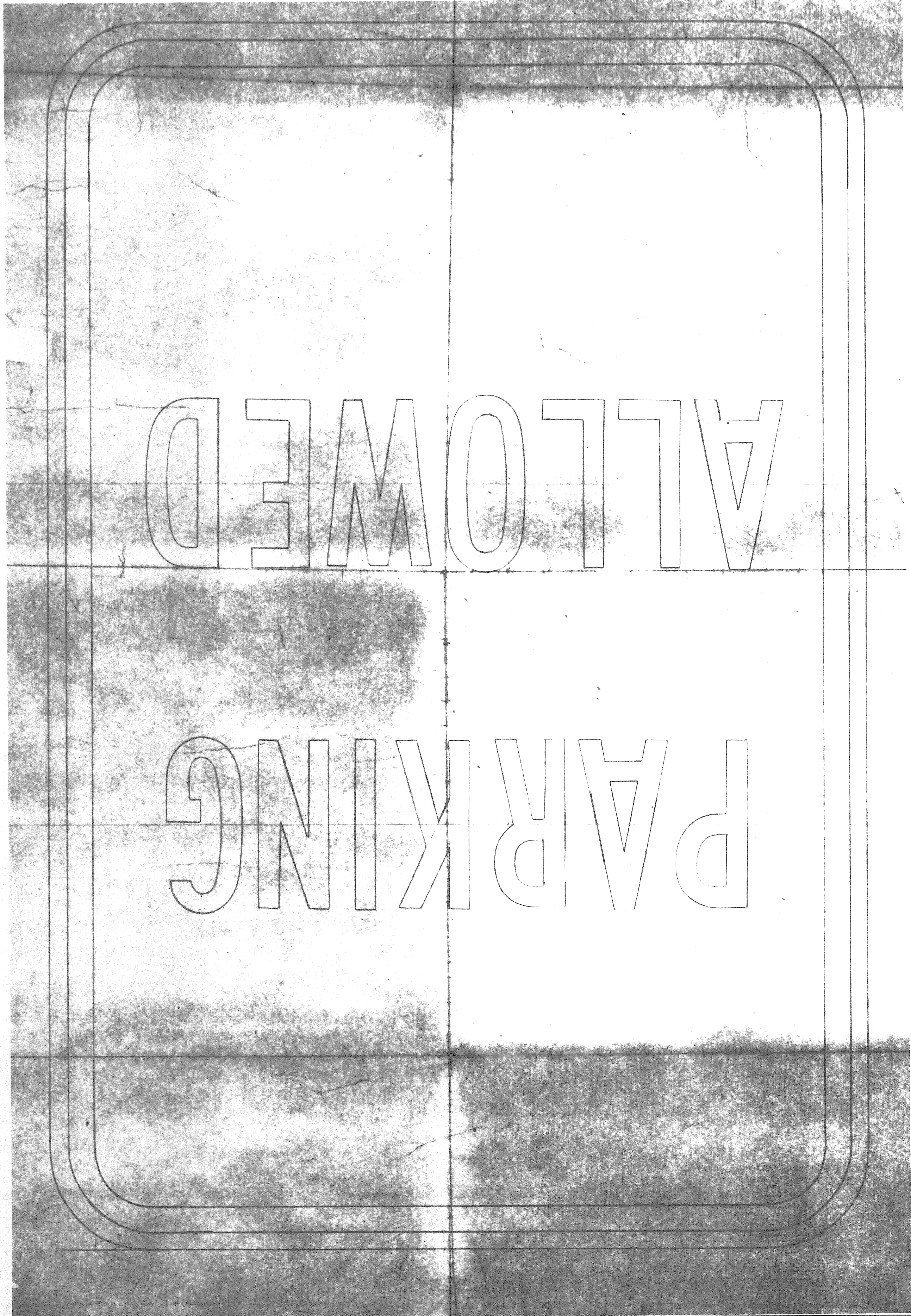
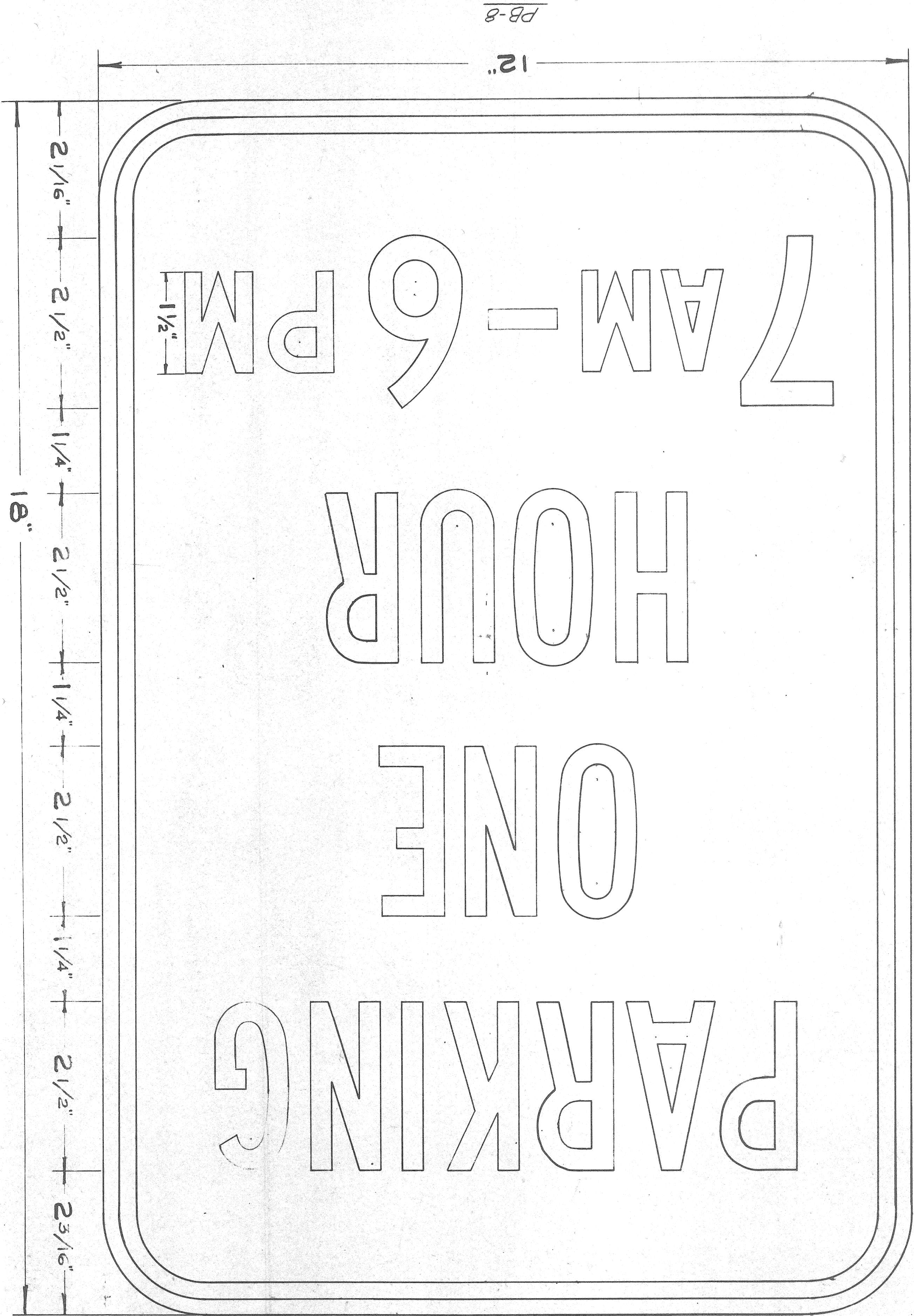
12

COUNTY PROJECT  
46243

ISSUE NO. /

DATE 8-3-90

Note: Typical layout for NU, PA, PH & PV  
Series Sign Legends



PA-1

PB-8

REVISIONS

CORRECT	DATE	DESIGNED BY	DRAWN BY
CORRECT			
SQUAD LEADER			
APPROVED			
ASSISTANT DIVISION DESIGN ENGINEER			
DIVISION DESIGN ENGINEER			

WAYNE COUNTY DEPARTMENT OF PUBLIC SERVICES  
ENGINEERING DIVISION

SIGN LEGENDS-CITY OF DETROIT  
MACK AVE.  
CADIEUX RD. TO WARREN AVE.

COUNTY PROJECT  
46243

13

ISSUE NO. /

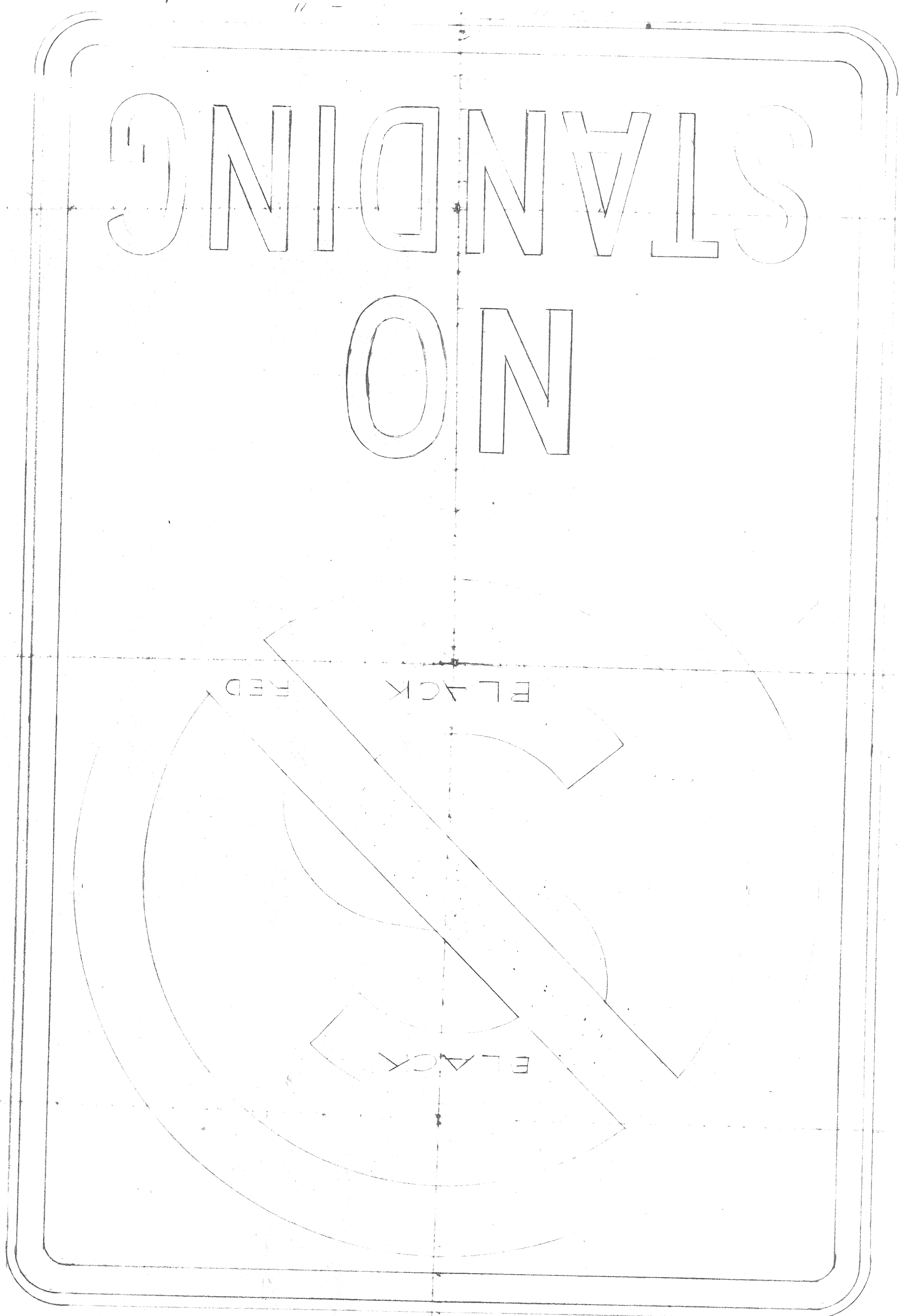
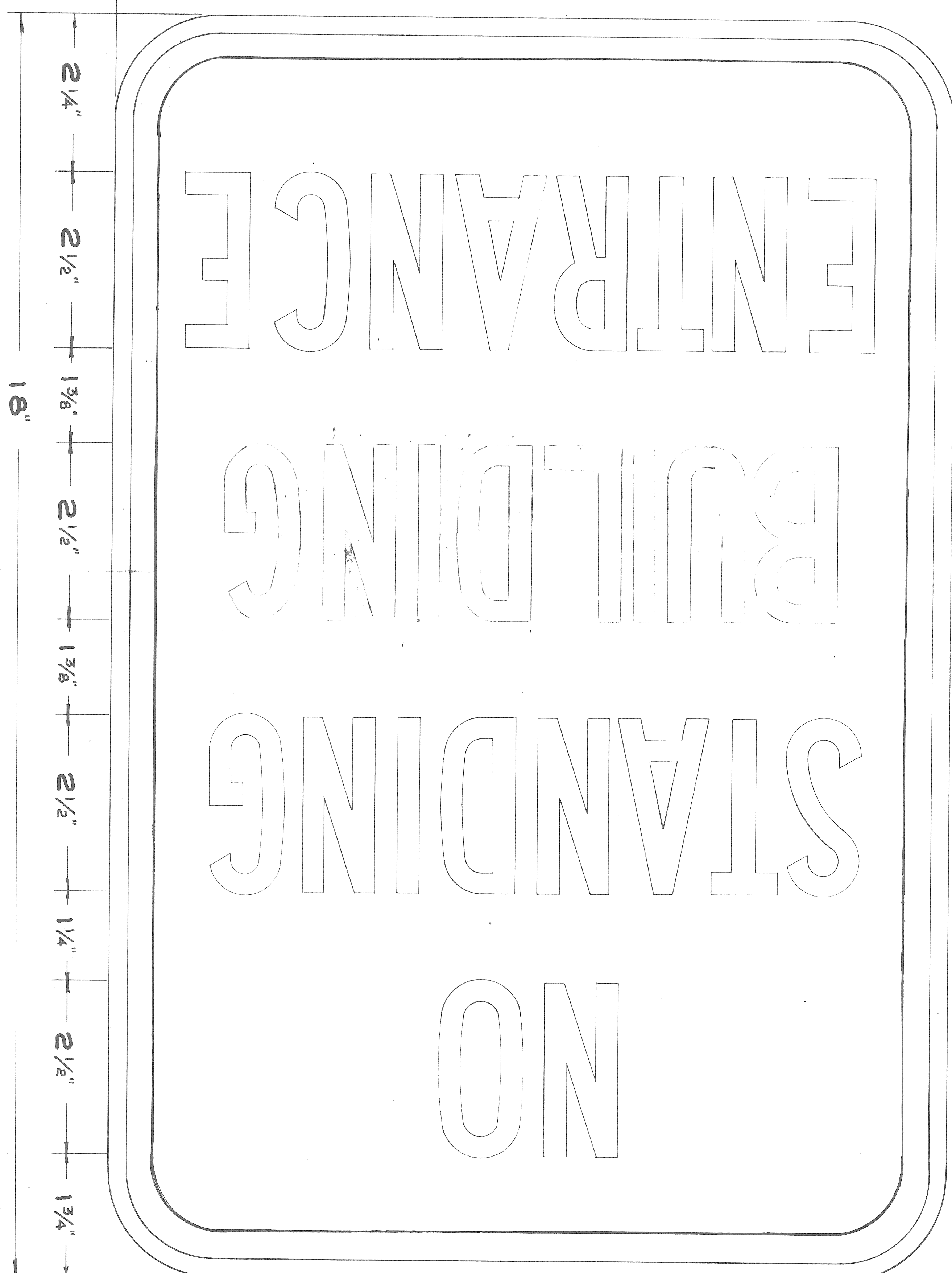
DATE 8-3-90

f-8-5

NB-1-5

NB-7

12"



REVISIONS

DATE	BY	REVISION

CORRECT  
 ASSISTANT DIVISION DESIGN ENGINEER  
 APPROVED

SQUAD LEADER

DIVISION DESIGN ENGINEER

WAYNE COUNTY DEPARTMENT OF PUBLIC SERVICES  
 ENGINEERING DIVISION

SIGN LEGENDS-CITY OF DETROIT  
 MACK AVE.  
 CADIEUX RD. TO WARREN AVE.

COUNTY PROJECT  
 46243

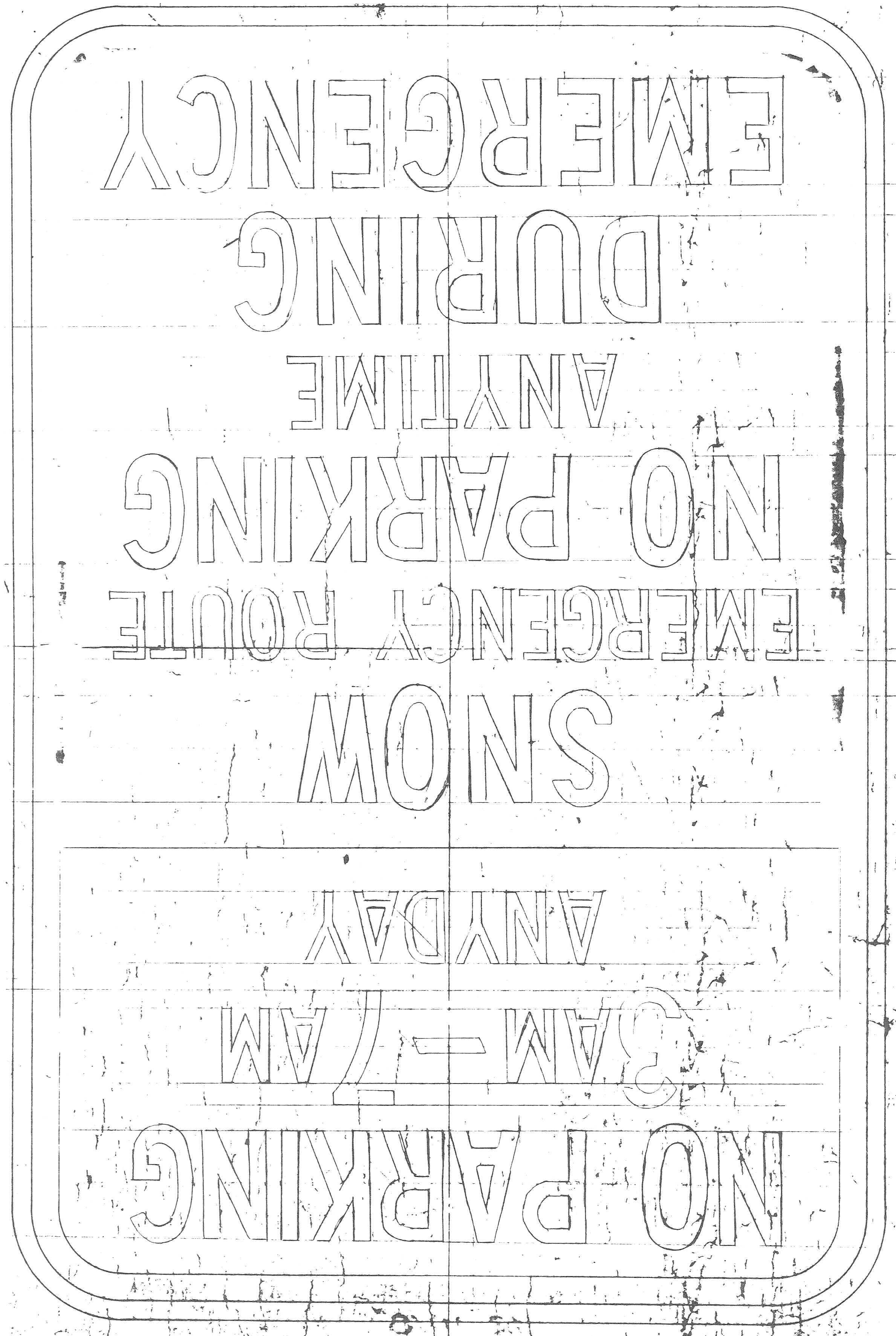
14

ISSUE NO. /

DATE 8-3-90

F-8-5

NS-17



IB-1-S

