

SCALE: 1"=40'

COORD	DESCRIPTION	DRN	CK'D	AP'D	DATE

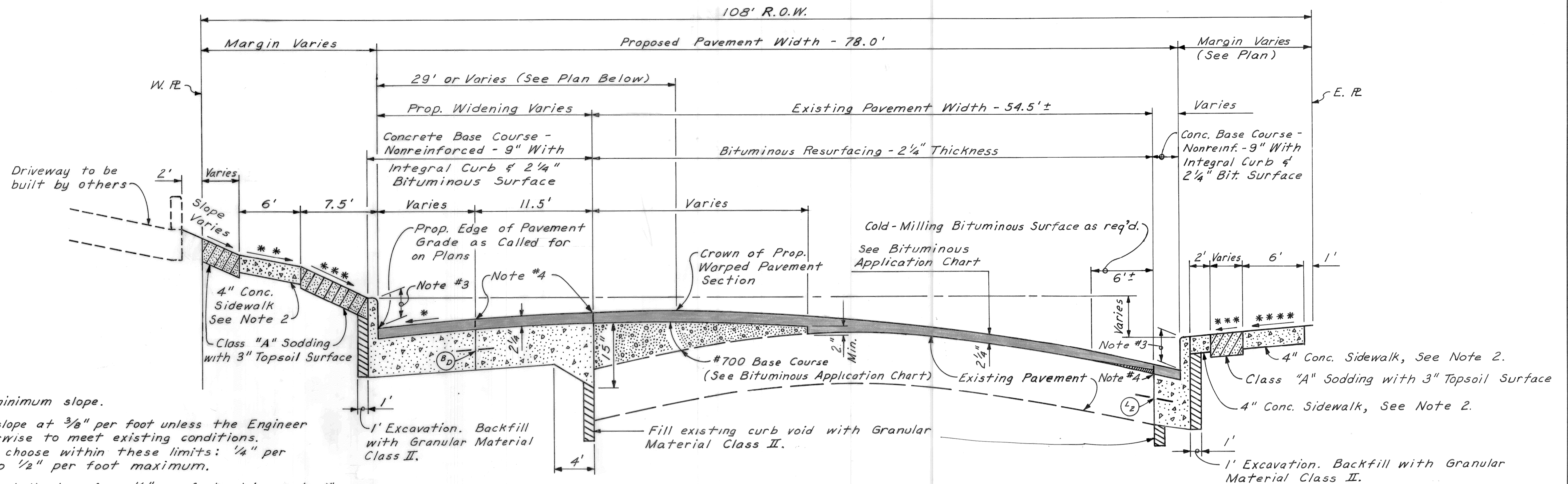
DESIGNED BY	E.O.
DRAWN BY	
TRACED BY	
CHECKED BY	R.P.

APPROVED:
William L. Talley
 ENGINEER OF STREETS
 HIGHWAY ENGINEER

CITY OF DETROIT
 CITY ENGINEERING
 BUREAUS OF STREETS AND HIGHWAYS

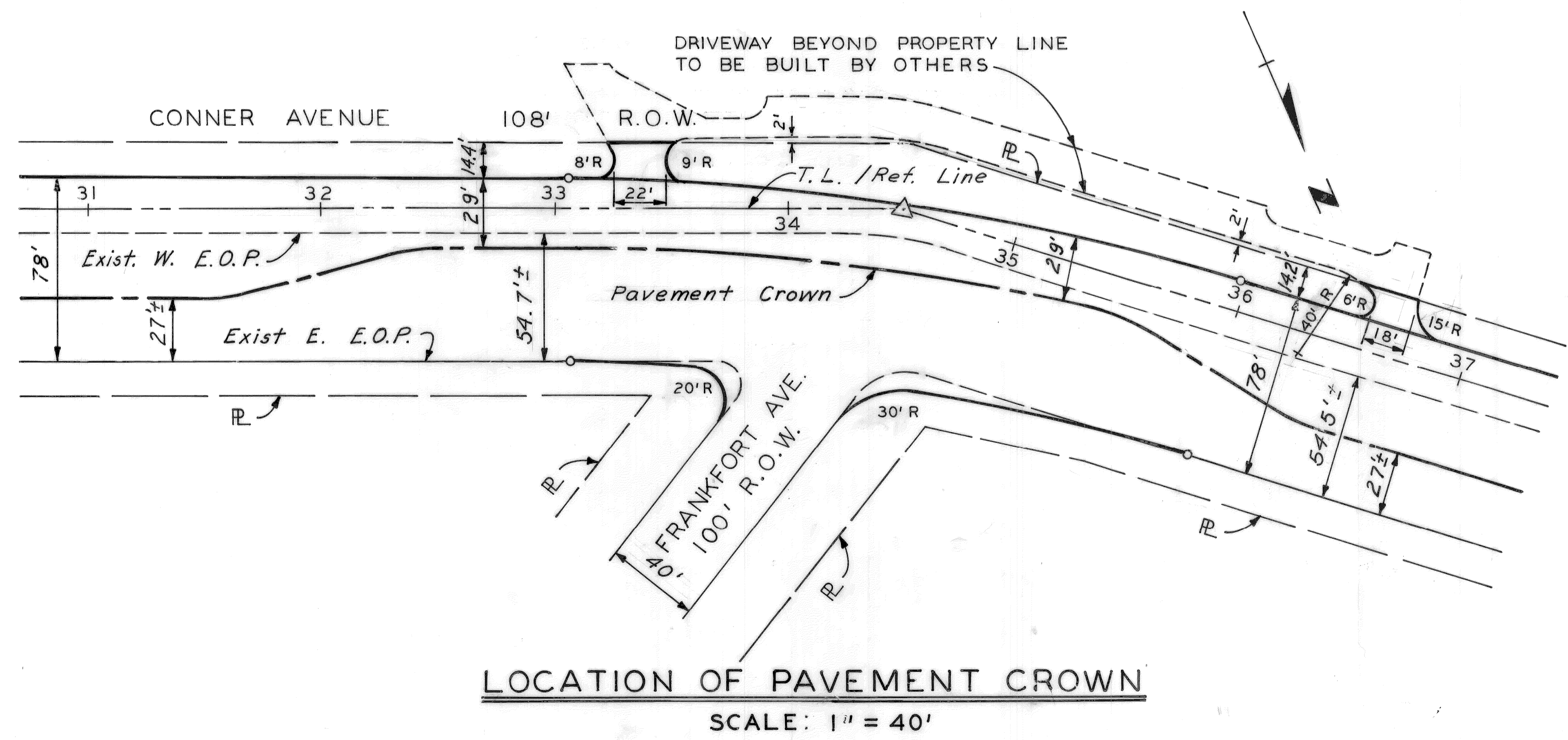
CONNER AVENUE WIDENING
 SOUTH OF WARREN AVE. TO OLGA STREET
 ALIGNMENT
 STA. 18+00 TO STA. 29+00

SHEET 4 OF 64 SHEETS
CONTRACT NO. 22392A
ASSIGNMENT NO.
DATE APRIL, 1985



- * 0.02' per foot minimum slope.
- ** Sidewalk shall slope at 3/8" per foot unless the Engineer determines otherwise to meet existing conditions. The Engineer will choose within these limits: 1/4" per foot minimum to 1/2" per foot maximum.
- *** Sodded areas shall slope from 1/4" per foot minimum to 1" per foot maximum unless the Engineer determines otherwise to meet existing conditions.
- **** Slope to meet existing grade at E. R. (1/4" per foot minimum slope).

TYPICAL CROSS SECTION CONNER AVENUE WIDENING
STA 31+50 TO STA 36+50
NO SCALE



LOCATION OF PAVEMENT CROWN
SCALE: 1" = 40'

NOTE

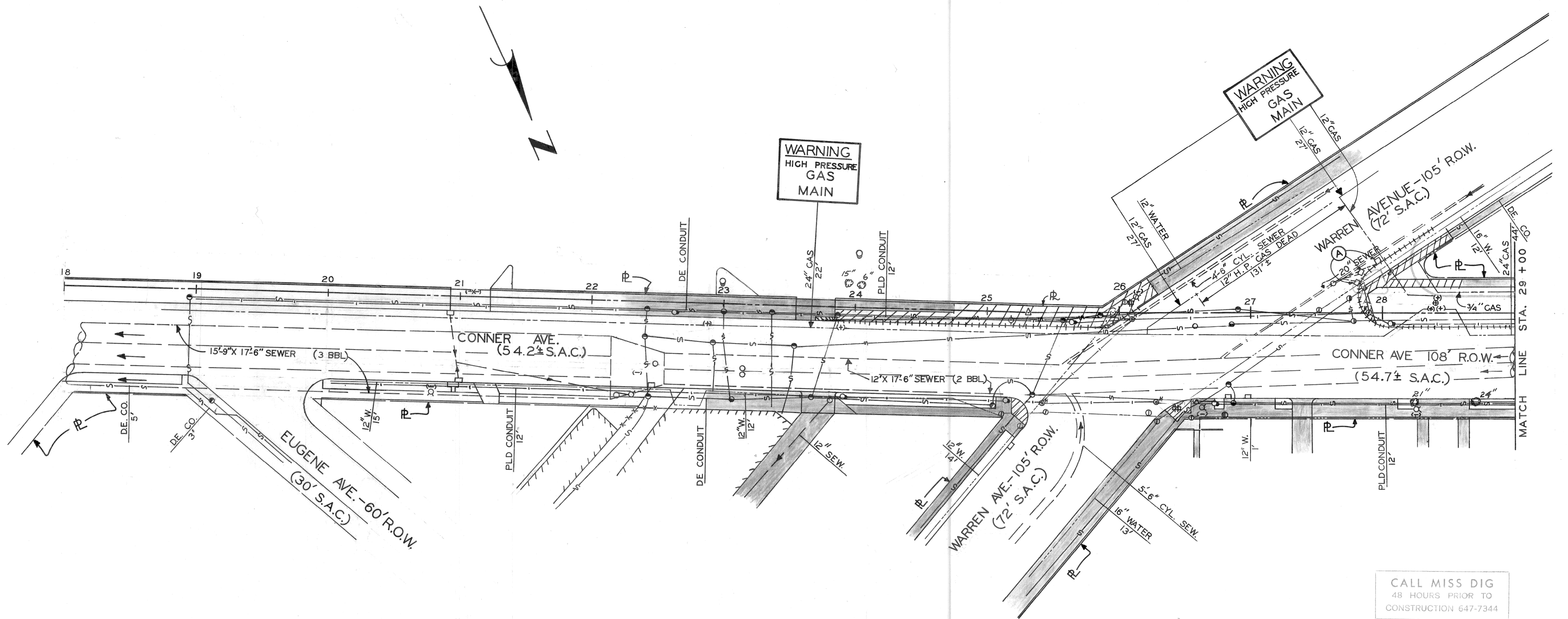
For Curb Details, General Notes and Joint Legend, see Typical Cross Sections, Sheet 2 of 64 sheets.

BITUMINOUS APPLICATION CHART

ITEM	RATE OF APPLICATION	ESTIMATED THICKNESS	ASPHALT PENETRATION
Bituminous Mix No. 1100L, 20AA	130 #/S.Y.	1 1/4 inches	85 - 100
Bituminous Mix No. 1100T, 20AA	120 #/S.Y.	1 inches	85 - 100
Bituminous Base Mix No. 700, 20C	220 #/S.Y. Min.	Varies	85 - 100






Bituminous Bond Coat 0-0.10 Gal./S.Y. to Rigid Bases and 0-0.05 Gal./S.Y. Tack Coat between layers.

REVISIONS LOCATED BY COORDINATES ON SHEET COOR'D DESCRIPTION DRN CK'D AP'VD DATE		DESIGNED BY <i>N. W.</i> DRAWN BY <i>N. W.</i> TRACED BY CHECKED BY <i>W. B.</i>	APPROVED: <i>William L. Talley</i> ENGINEER OF STREETS HIGHWAY ENGINEER	CITY OF DETROIT CITY ENGINEERING BUREAUS OF STREETS AND HIGHWAYS	CONNER AVENUE WIDENING SOUTH OF WARREN AVENUE TO OLGA STREET TYPICAL CROSS SECTIONS	SHEET 3 OF 64 SHEETS CONTRACT NO. 22392A ASSIGNMENT NO. DATE APRIL, 1985
---	--	---	--	--	---	---



SCALE: 1" = 40'

CALL MISS DIG
48 HOURS PRIOR TO
CONSTRUCTION 647-7344

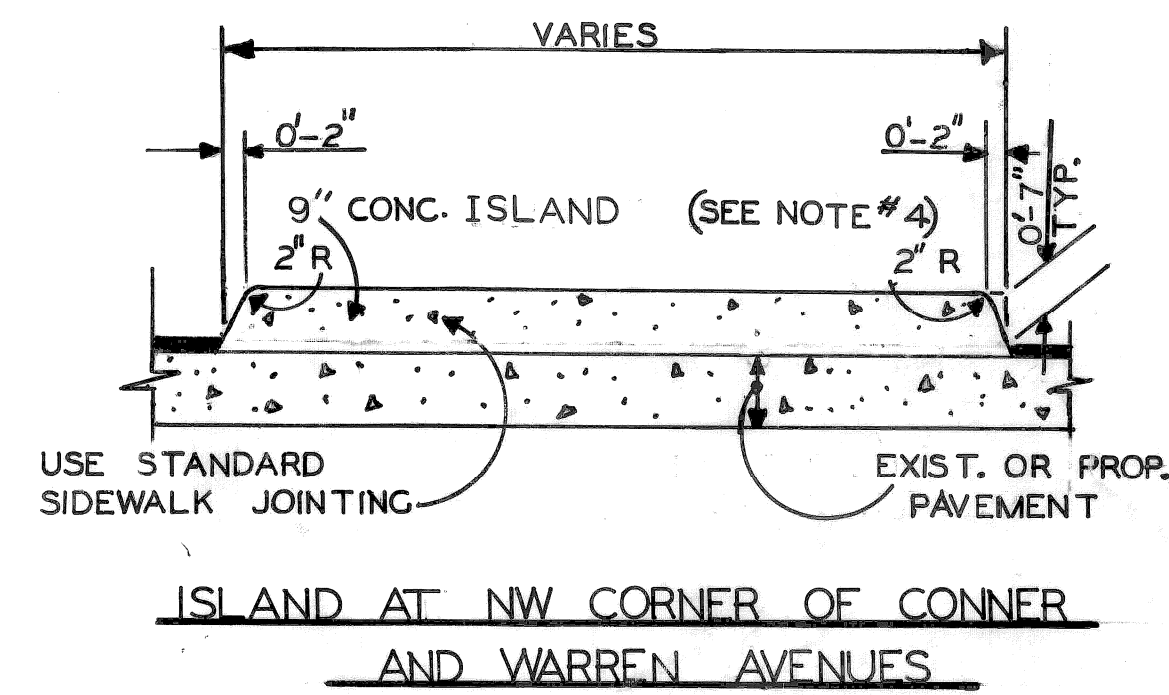
- REMOVAL LEGEND**
-  REMOVING PAVEMENT
 -  EXISTING SIDEWALK OR DRIVEWAY TO REMAIN
 -  REMOVING SIDEWALK
 -  REMOVING CURB
 -  ABANDONING DRAINAGE STRUCTURES

- NOTES**
- FOR UTILITY LEGEND AND SYMBOLS, SEE SHEET NO. 21.
 - LOCATIONS OF EXISTING UTILITY LINES ARE BASED ON THE BEST AVAILABLE RECORDS AND ARE NOT GUARANTEED FOR ACCURACY.

REFERENCE DRAWINGS		DESIGNED BY	APPROVED:		CITY OF DETROIT			CONNER AVE. WIDENING		SHEET 8 OF 64 SHEETS
		DRAWN BY	<i>William L. Talley</i> ENGINEER OF STREETS		CITY ENGINEERING			SOUTH OF WARREN AVENUE TO OLGA STREET		
		TRACED BY	HIGHWAY ENGINEER		BUREAUS OF STREETS AND HIGHWAYS			REMOVALS		CONTRACT NO. 22392 A
COORD. DESCRIPTION		CHECKED BY						STA. 18+00 TO STA. 29+00		ASSIGNMENT NO.
REVISIONS LOCATED BY COORDINATES ON SHEET		W.B.							DATE APRIL, 1985	

SCALE	HORIZONTAL	VERTICAL	BOOK NO.	PG.	LEVEL DATE	BEFORE STARTING CONSTRUCTION CONTRACTOR MUST CHECK WITH UTILITIES FOR LOCATIONS OF EXISTING STRUCTURES WHETHER OR NOT INDICATED ON PLANS.

NOTE - FOR SYMBOLS (A) ETC. SEE STANDARD DETAIL DRAWING NO. C-475

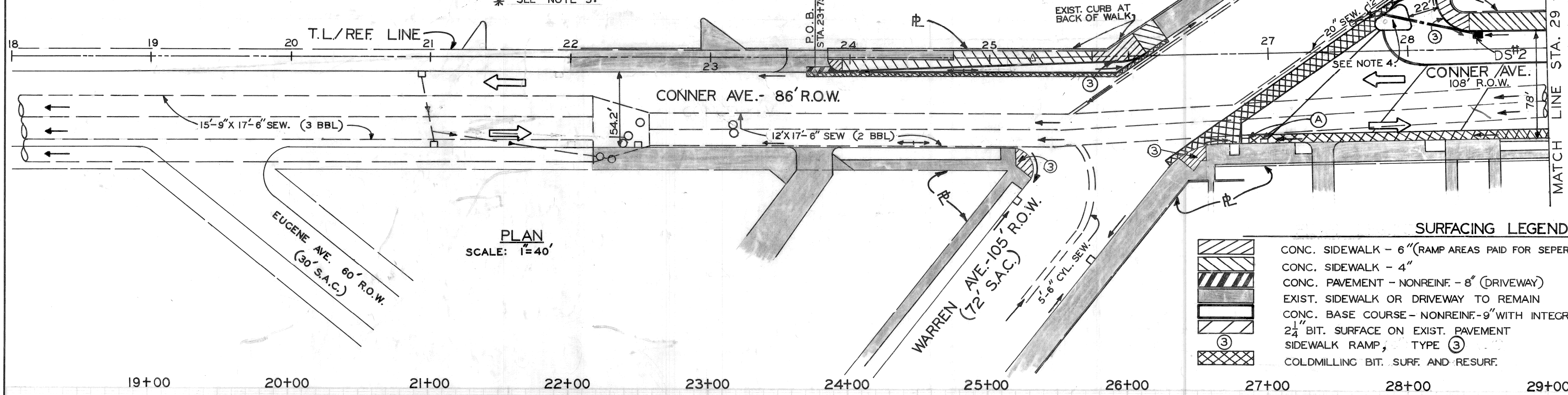


DRAINAGE STRUCTURE NO.	TYPE OF STRUCT.	WITH TRAP (T)	SEWER LENGTH		AND D.S.	SEWER TAP SIZE (IN.)	TRENCH DETAIL (L.F.)		COMMENTS
			TYPE	LEAVING SIZE (IN.)			8	9	
1	C.B. "L"	HALF TRAP	25	12	C-76-III		25		PASSES OVER 16" WATER MAIN. ENCASE OVER WATER MAIN. (INCIDENTAL)
2	C.B. "L"	HALF TRAP	75	12	C-76-III		20	55	PASSES OVER DE. GAS & 16" WATER. ENCASE OVER WATER MAIN. (INCIDENTAL)

* SEE NOTE 5.

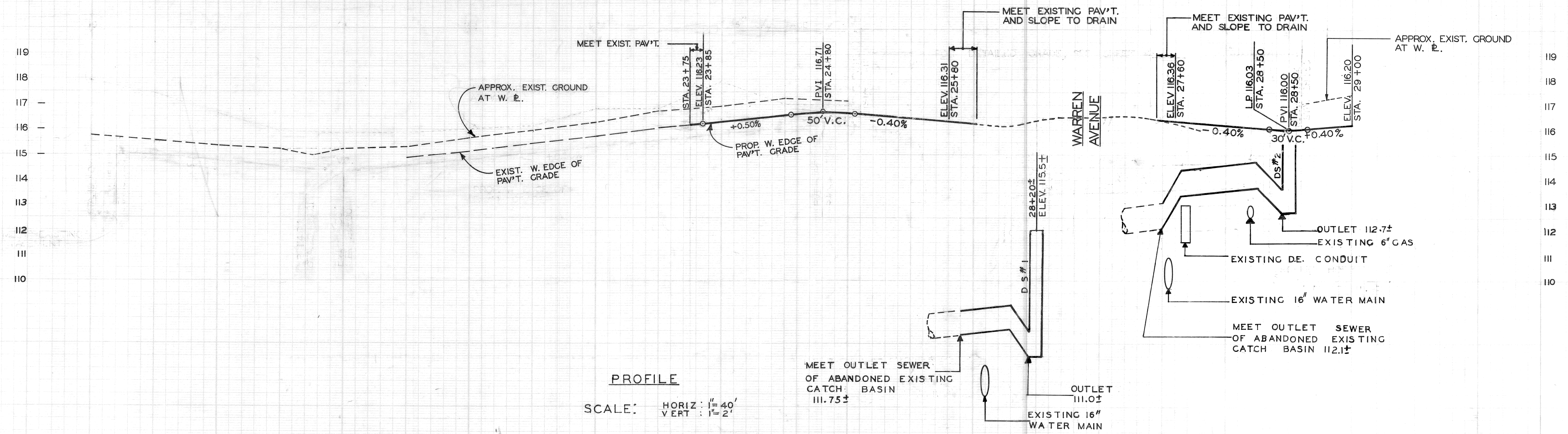
BENCH	MARKS	ELEV.
PBM 64-251	N.E. CORNER WARREN AND CONNER	116.160
CBM	HYD. E. SIDE CONNER STA. 30+275	120.405

- NOTES**
- FOR ALIGNMENT, SEE SHEET NO. 4
 - FOR UTILITY LEGEND AND SYMBOLS, SEE SHEET NO. 21
 - FOR DRIVEWAY DETAILS, SEE SHEET NO. 21
 - ALL WORK NECESSARY TO CONSTRUCT THE CONCRETE ISLAND AS SHOWN WILL BE PAID FOR AS "9" CONCRETE ISLAND" (SEE DETAIL, THIS SHEET)
 - IF INTERFERENCE WITH EXISTING UTILITIES IS NOT ENCOUNTERED, A CATCH BASIN "A" SHALL BE USED.
 - PROPOSED DRIVEWAY AND ALLEY RADII SHALL BE 10' UNLESS OTHERWISE CALLED FOR ON PLANS.



SURFACING LEGEND

	CONC. SIDEWALK - 6" (RAMP AREAS PAID FOR SEPERATELY)		DRAINAGE ARROW ADJUSTING STRUCTURE COVERS
	CONC. SIDEWALK - 4"		TRAFFIC DIRECTION ARROW
	CONC. PAVEMENT - NONREINF. - 8" (DRIVEWAY)		
	EXIST. SIDEWALK OR DRIVEWAY TO REMAIN		
	CONC. BASE COURSE - NONREINF. - 9" WITH INTEGRAL CURB AND 2 1/2" BIT. SURF.		
	2 1/2" BIT. SURFACE ON EXIST. PAVEMENT		
	SIDEWALK RAMP, TYPE (3)		
	COLDMILLING BIT. SURF. AND RESURF.		

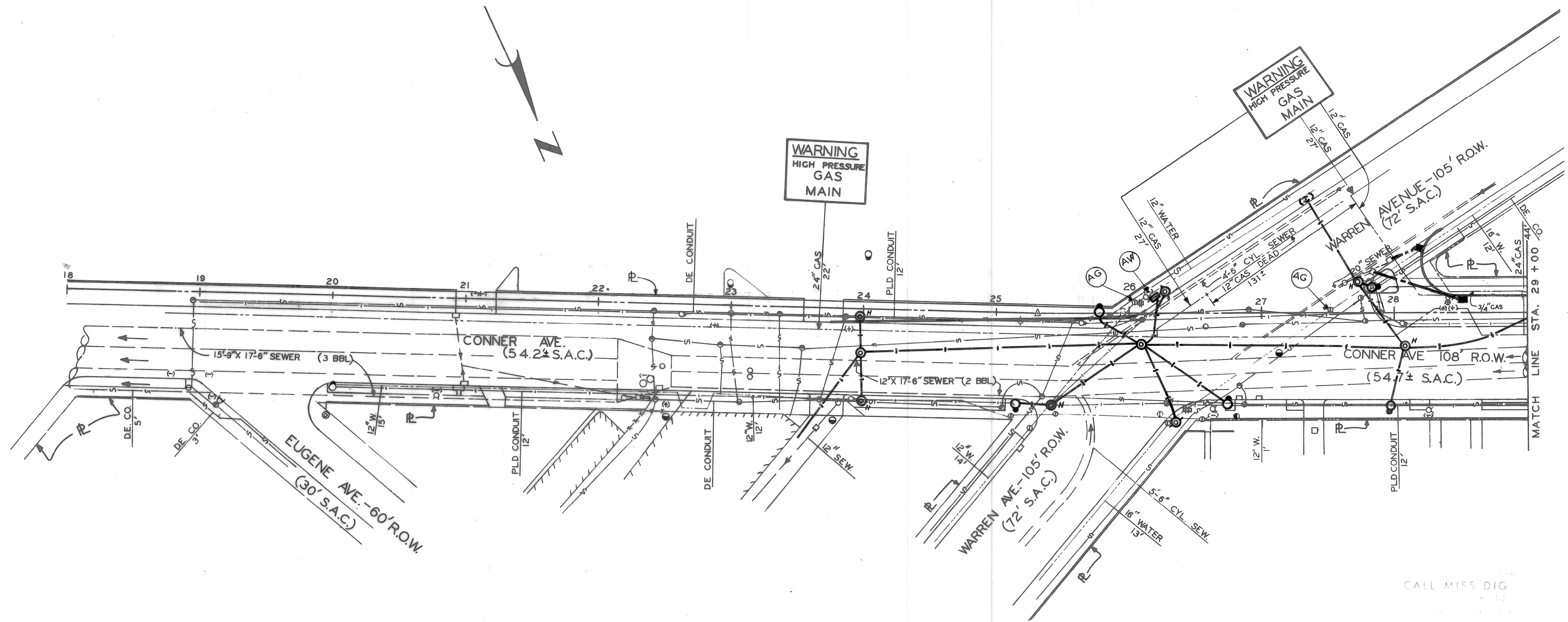


DESCRIPTION	DRN	CHK'D	AP'D	DATE
REVISIONS				

BY	EO	CHECKED BY	WB	APPROVED:	<i>William L. Galley</i>
PLAN				ENGINEER OF STREETS	
GRADE	EO		WB	HIGHWAY ENGINEER	
ESTIMATE					
FINAL					

CITY OF DETROIT
CITY ENGINEERING DEPARTMENT
BUREAU OF STREETS AND HIGHWAYS

CONNER AVENUE WIDENING		INDEX NO.	SHEET 12 OF 64 SHEETS
SOUTH OF WARREN AVE. TO OLGA STREET		TOPO NO.	CONTRACT NO. 22392A
PLAN AND PROFILE		ASSIGNMENT NO.	
STA. 18+00 TO STA. 29+00		DATE	APRIL, 1985



SCALE: 1" = 40'

LEGEND

- ADJUSTING WATER SHUTOFFS ----- (AW)
- ADJUST GATE WELL COVER ----- (AG)
- RECONSTRUCT GATE WELL ----- (RG)

NOTES

- FOR UTILITY LEGEND AND SYMBOLS, SEE SHEET NO. 21.
- LOCATIONS OF EXISTING UTILITY LINES ARE BASED ON THE BEST AVAILABLE RECORDS AND ARE NOT GUARANTEED FOR ACCURACY.

<table border="1"> <thead> <tr><th>COORD</th><th>DESCRIPTION</th><th>DRW</th><th>CHK'D</th><th>APVD</th><th>DATE</th></tr> </thead> <tbody> <tr><td> </td><td> </td><td> </td><td> </td><td> </td><td> </td></tr> <tr><td> </td><td> </td><td> </td><td> </td><td> </td><td> </td></tr> <tr><td> </td><td> </td><td> </td><td> </td><td> </td><td> </td></tr> </tbody> </table>	COORD	DESCRIPTION	DRW	CHK'D	APVD	DATE																			<table border="1"> <tr><th>REFERENCE DRAWINGS</th><td> </td></tr> <tr><th>DESIGNED BY</th><td> </td></tr> <tr><th>DRAWN BY</th><td>E.O.</td></tr> <tr><th>TRACED BY</th><td> </td></tr> <tr><th>CHECKED BY</th><td>W.B.</td></tr> </table>	REFERENCE DRAWINGS		DESIGNED BY		DRAWN BY	E.O.	TRACED BY		CHECKED BY	W.B.	<table border="1"> <tr><th>APPROVED:</th><td><i>William A. Talley</i> ENGINEER OF STREETS</td></tr> <tr><th> </th><td> </td></tr> <tr><th> </th><td>HIGHWAY ENGINEER</td></tr> </table>	APPROVED:	<i>William A. Talley</i> ENGINEER OF STREETS				HIGHWAY ENGINEER	<p align="center">CITY OF DETROIT CITY ENGINEERING BUREAU OF STREETS AND HIGHWAYS</p>	<p align="center">CONNER AVE. WIDENING SOUTH OF WARREN AVENUE TO OLGA STREET UTILITIES STA. 18+00 TO STA. 29+00</p>	<table border="1"> <tr><td>SHEET 17 OF 64 SHEETS</td></tr> <tr><td>CONTRACT NO. 22392A</td></tr> <tr><td>ASSIGNMENT NO.</td></tr> <tr><td>DATE APRIL, 1985</td></tr> </table>	SHEET 17 OF 64 SHEETS	CONTRACT NO. 22392A	ASSIGNMENT NO.	DATE APRIL, 1985
	COORD	DESCRIPTION	DRW	CHK'D	APVD	DATE																																											
REFERENCE DRAWINGS																																																	
DESIGNED BY																																																	
DRAWN BY	E.O.																																																
TRACED BY																																																	
CHECKED BY	W.B.																																																
APPROVED:	<i>William A. Talley</i> ENGINEER OF STREETS																																																
	HIGHWAY ENGINEER																																																
SHEET 17 OF 64 SHEETS																																																	
CONTRACT NO. 22392A																																																	
ASSIGNMENT NO.																																																	
DATE APRIL, 1985																																																	