

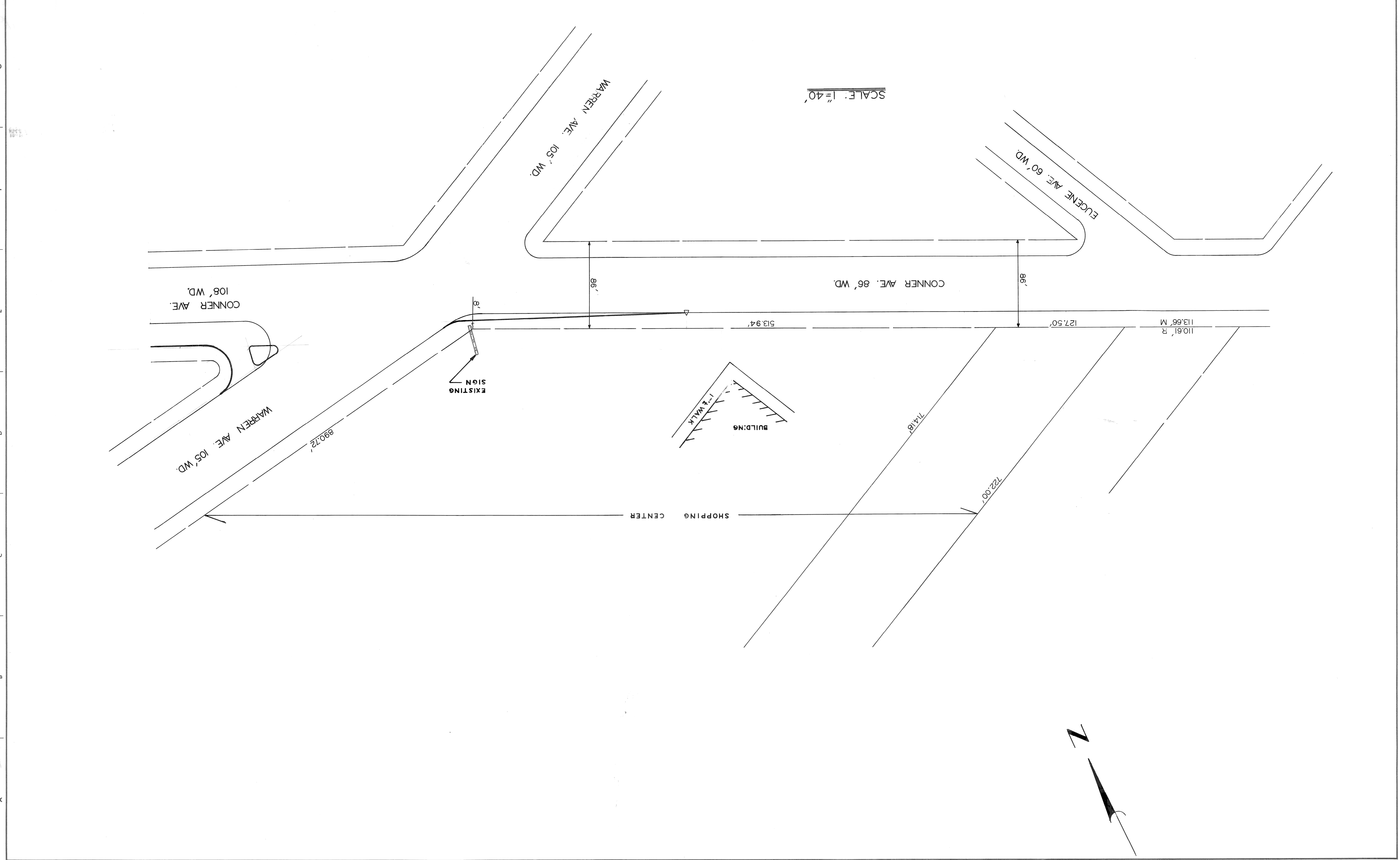
| NO. | DATE | DESCRIPTION |
|-----|------|-------------|
|     |      |             |
|     |      |             |
|     |      |             |
|     |      |             |
|     |      |             |
|     |      |             |
|     |      |             |
|     |      |             |
|     |      |             |

| NO. | DATE | DESCRIPTION |
|-----|------|-------------|
|     |      |             |
|     |      |             |
|     |      |             |
|     |      |             |
|     |      |             |
|     |      |             |
|     |      |             |
|     |      |             |
|     |      |             |

|             |      |
|-------------|------|
| DESIGNED BY | E.O. |
| DRAWN BY    | E.O. |
| TRACED BY   | R.P. |
| CHECKED BY  | R.P. |

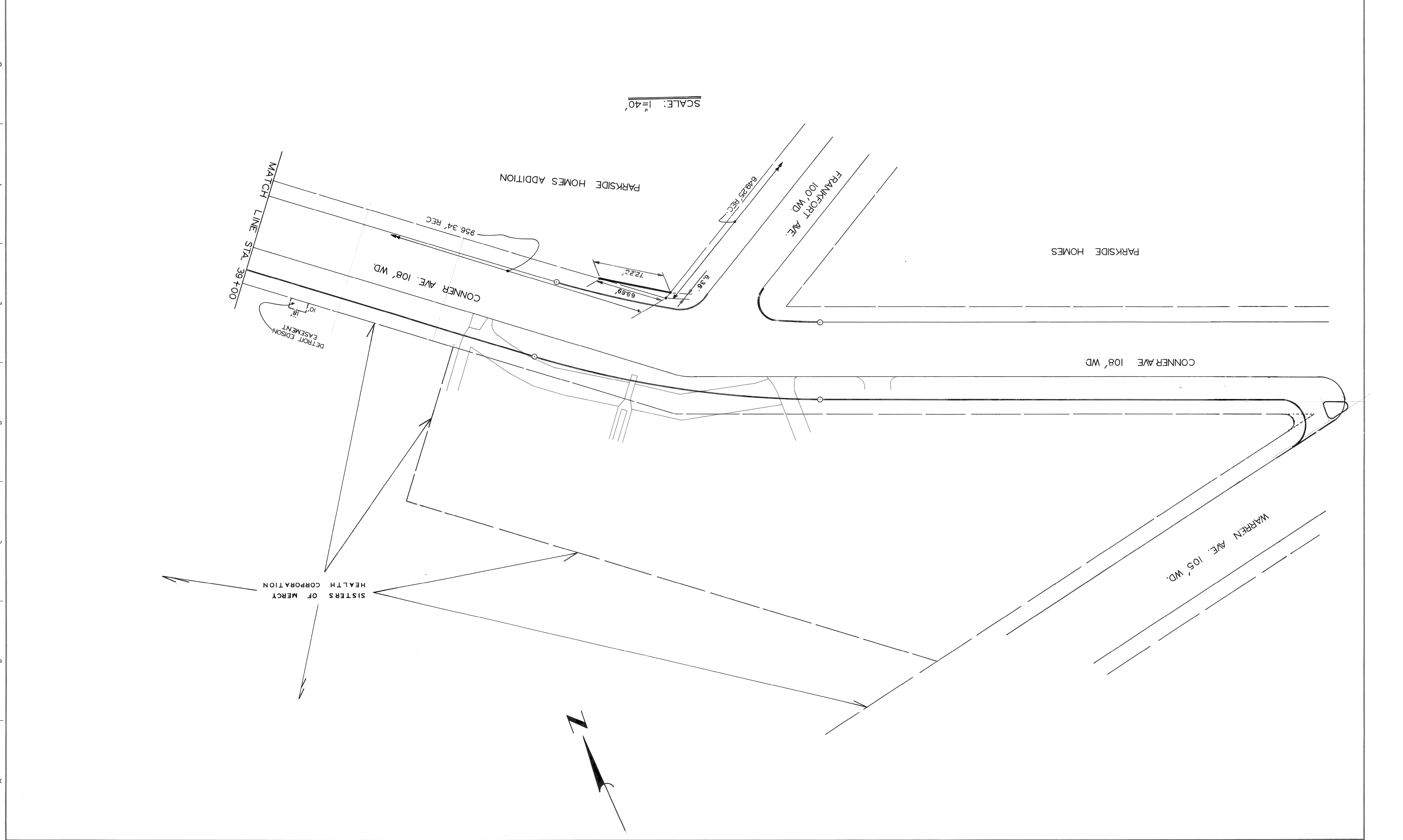
APPROVED: \_\_\_\_\_  
 ENGINEER OF STREETS  
 HIGHWAY ENGINEER  
 CITY OF DETROIT  
 BUREAUS OF STREETS AND HIGHWAYS

|                                     |                     |                            |                  |
|-------------------------------------|---------------------|----------------------------|------------------|
| SHEET 4 OF 4 SHEETS                 | CONTRACT NO. 22392A | ASSIGNMENT NO.             | DATE APRIL, 1985 |
| CONNER AVENUE WIDENING              |                     | R.O.W.                     |                  |
| SOUTH OF WARREN AVE. TO OLGA STREET |                     | EUGENE AVE. TO WARREN AVE. |                  |



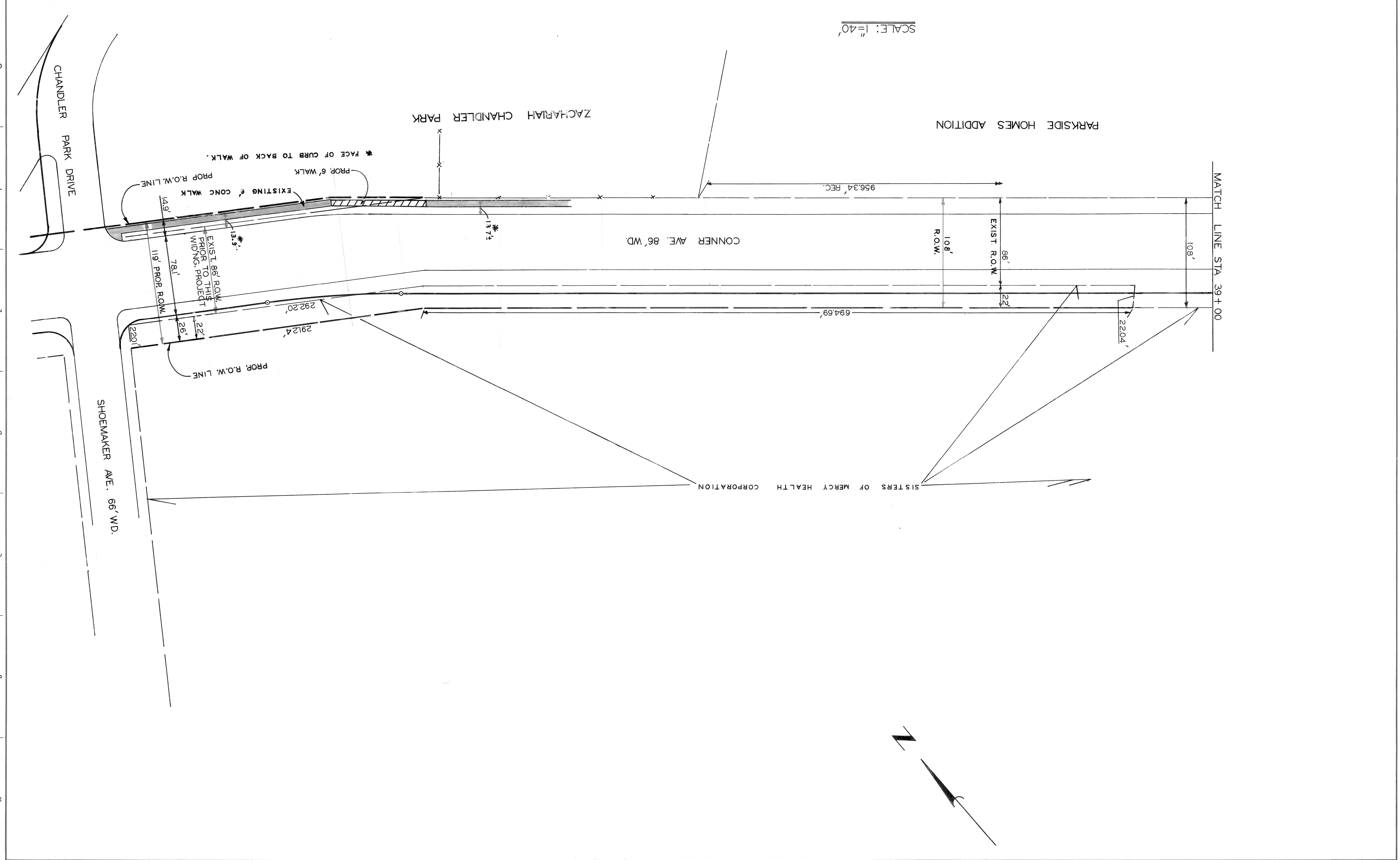
11 10 9 8 7 6 5 4 3 2 1 TELEPHONE NO. 591015

|                     |  |                                     |  |                                 |  |                     |  |             |  |           |  |                      |  |   |  |
|---------------------|--|-------------------------------------|--|---------------------------------|--|---------------------|--|-------------|--|-----------|--|----------------------|--|---|--|
| DATE APRIL, 1985    |  | WARREN AVE TO STA. 39 +00           |  | CITY OF DETROIT                 |  | APPROVED:           |  | DESIGNED BY |  | DRAWINGS  |  | REFERENCE            |  | REVISIONS LOCATED BY COORDINATES ON SHEET |  |
| ASSIGNMENT NO.      |  | R.O.W.                              |  | BUREAUS OF STREETS AND HIGHWAYS |  | ENGINEER OF STREETS |  | E.O.        |  | DRAWN BY  |  | DRN. CKD. APPD. DATE |  | COORD.                                    |  |
| CONTRACT NO. 22392A |  | SOUTH OF WARREN AVE. TO OLGA STREET |  | CITY ENGINEERING                |  | HIGHWAY ENGINEER    |  | R.P.        |  | TRACED BY |  | DESCRIPTION          |  | NO.                                       |  |
| SHEET 2 OF 4 SHEETS |  | CONNER AVENUE WIDENING              |  | CITY OF DETROIT                 |  | ENGINEER OF STREETS |  | E.O.        |  | DRAWN BY  |  | DESCRIPTION          |  | NO.                                       |  |



CONNER AVENUE WIDENING  
 SOUTH OF WARREN AVE. TO OLGA STREET  
 R.O.W.  
 WARREN AVE TO STA. 39 +00  
 DATE APRIL, 1985  
 SHEET 2 OF 4 SHEETS  
 CONTRACT NO. 22392A  
 ASSIGNMENT NO.  
 CITY OF DETROIT  
 BUREAUS OF STREETS AND HIGHWAYS  
 CITY ENGINEERING  
 ENGINEER OF STREETS  
 HIGHWAY ENGINEER  
 APPROVED:  
 DESIGNED BY  
 DRAWN BY  
 TRACED BY  
 CHECKED BY  
 R.P.  
 E.O.  
 SCALE: 1"=40'  
 MATCH LINE STA. 39+00  
 CONNER AVE. 108' WD.  
 FRANKFORT AVE. 100' WD.  
 WARREN AVE. 105' WD.  
 PARKSIDE HOMES ADDITION  
 PARKSIDE HOMES  
 DETROIT EDISON EASEMENT  
 SISTERS OF MERCY HEALTH CORPORATION  
 NORTH ARROW

|                     |  |                                     |  |                                 |  |                     |  |             |  |          |  |            |  |   |  |
|---------------------|--|-------------------------------------|--|---------------------------------|--|---------------------|--|-------------|--|----------|--|------------|--|---|--|
| DATE APRIL, 1985    |  | R.O.W. STA. 39+00 TO SHOEMAKER AVE. |  | CITY OF DETROIT                 |  | APPROVED:           |  | DESIGNED BY |  | DRAWN BY |  | CHECKED BY |  | REVISIONS LOCATED BY COORDINATES ON SHEET |  |
| ASSIGNMENT NO.      |  | SOUTH OF WARREN AVE. TO OLGA STREET |  | BUREAUS OF STREETS AND HIGHWAYS |  | ENGINEER OF STREETS |  | E.O.        |  | R.P.     |  | TRACED BY  |  | DESCRIPTION                               |  |
| CONTRACT NO. 22392A |  | CONNER AVENUE WIDENING              |  | CITY ENGINEERING                |  | HIGHWAY ENGINEER    |  |             |  |          |  |            |  |   |  |
| SHEET 3 OF 4 SHEETS |  |                                     |  |                                 |  |                     |  |             |  |          |  |            |  |   |  |



SCALE: 1"=40'

MATCH LINE STA 39+00

CONNER AVE. 86' WD.

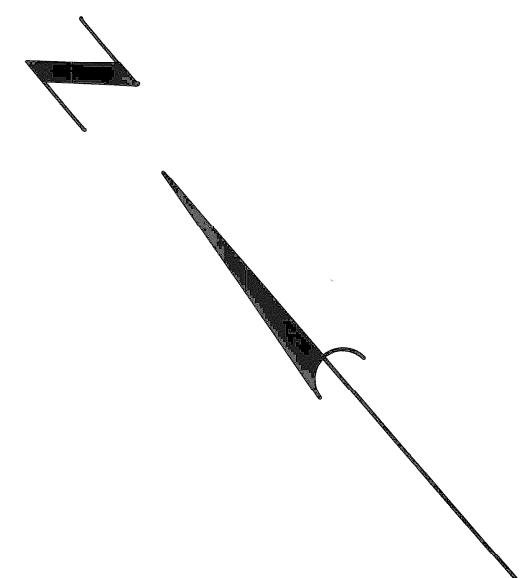
PARKSIDE HOMES ADDITION

ZACHARIAH CHANDLER PARK

CHANDLER PARK DRIVE

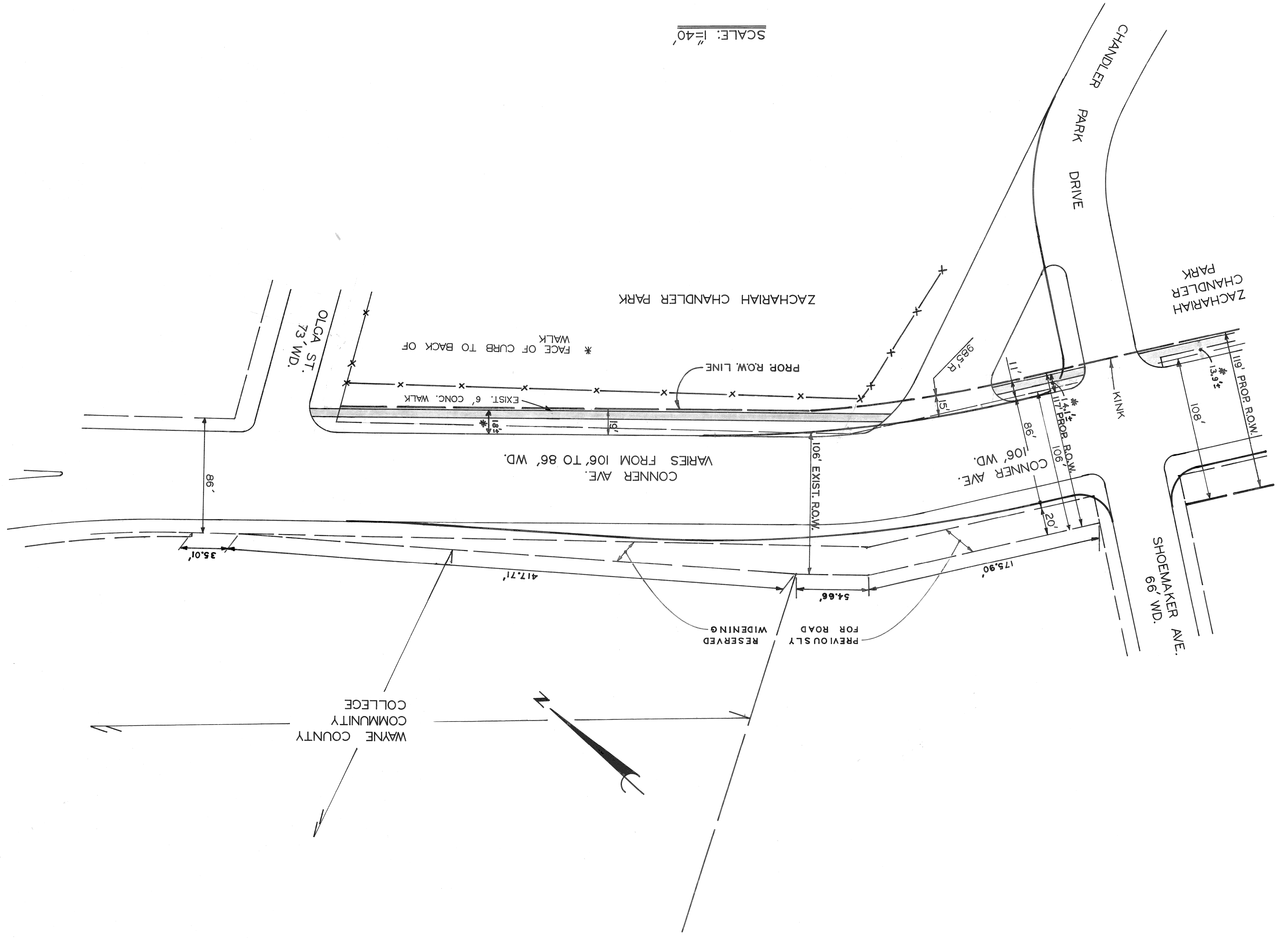
SHOEMAKER AVE. 66' WD.

SISTERS OF MERCY HEALTH CORPORATION



A B C D E F G

|   |             |             |           |  |   |                     |
|---|-------------|-------------|-----------|--|---|---------------------|
| REVISIONS LOCATED BY COORDINATES ON SHEET |             | DESIGNED BY | APPROVED: | CITY OF DETROIT<br>CITY ENGINEERING<br>BUREAUS OF STREETS AND HIGHWAYS | CONTRACT NO. 22392A   | SHEET 4 OF 4 SHEETS |
| COORD.                                    | DESCRIPTION | DRAWN BY    | TRACED BY |  |   |                     |
|   |             | RP          | E.O.      |  | CONNER AVE. WIDENING<br>SOUTH OF WARREN AVE. TO OLGA STREET | DATE APRIL, 1985    |



A B C D E F G