

PROJECT LOCATION



POB: 13+85

City of Detroit



Downtown Development Authority
500 Griswold, Suite 2200, 22nd Floor
Detroit, Michigan 48226
Phone: 313 963 2940
Fax: 313 963 8839

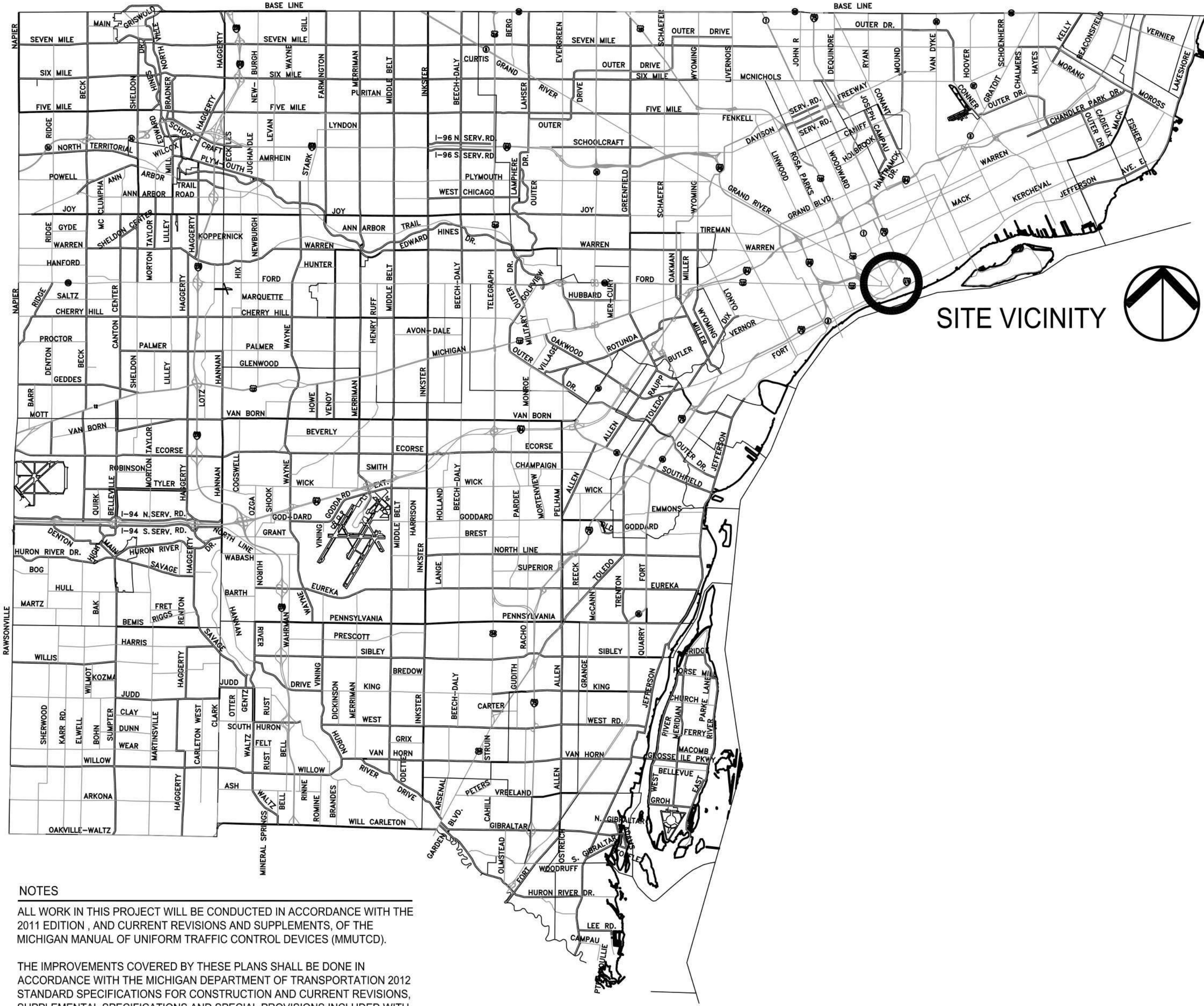
POE: 30+00

CITY OF DETROIT
IN COOPERATION WITH
MDOT AND FHWA



DOWNTOWN DEVELOPMENT AUTHORITY

MADISON AVENUE STREETScape
BIDS 03-07-2014



SITE VICINITY



NOTES

ALL WORK IN THIS PROJECT WILL BE CONDUCTED IN ACCORDANCE WITH THE 2011 EDITION, AND CURRENT REVISIONS AND SUPPLEMENTS, OF THE MICHIGAN MANUAL OF UNIFORM TRAFFIC CONTROL DEVICES (MMUTCD).

THE IMPROVEMENTS COVERED BY THESE PLANS SHALL BE DONE IN ACCORDANCE WITH THE MICHIGAN DEPARTMENT OF TRANSPORTATION 2012 STANDARD SPECIFICATIONS FOR CONSTRUCTION AND CURRENT REVISIONS, SUPPLEMENTAL SPECIFICATIONS AND SPECIAL PROVISIONS INCLUDED WITH THE PROPOSAL AS WELL AS THE CITY OF DETROIT STANDARD PLANS AND SPECIFICATIONS.

DESIGNED TO MEET THE STANDARDS OF THE 2004 AMERICAN ASSOCIATION OF THE STATE HIGHWAY AND TRANSPORTATION OFFICIALS, "A POLICY OF GEOMETRIC DESIGN OF HIGHWAY AND STREETS" (AASHTO) AND CURRENT REVISIONS AND SUPPLEMENTS.

FOR PROTECTION OF UNDERGROUND UTILITIES AND IN CONFORMANCE WITH PUBLIC ACT 53, 1974, THE CONTRACTOR SHALL CALL MISS DIG (811) A MINIMUM OF THREE WORKING DAYS (72 HOURS, EXCLUDING SATURDAYS, SUNDAYS, AND HOLIDAYS) PRIOR TO BEGINNING EACH EXCAVATION IN AREAS WHERE PUBLIC UTILITIES HAVE NOT BEEN PREVIOUSLY LOCATED. MEMBERS WILL BE ROUTINELY NOTIFIED. THE CONTRACTOR WILL BE RESPONSIBLE FOR NOTIFYING UTILITY OWNERS WHO MAY NOT BE A PART OF THE "MISS DIG" ALERT SYSTEM.



Know what's below.
Call before you dig.

MDOT JOB #: 118219A
CONTROL SECTION: CSTA 82400
FEDERAL PROJECT #: STP
FEDERAL ITEM #: TT

PLAN PREPARED BY:

hamiltonanderson

architecture landscape architecture
urban planning civil engineering
interior design graphic design

ARCHITECT
LANDSCAPE ARCHITECT

HAMILTON ANDERSON ASSOCIATES
1435 RANDOLPH
SUITE 200
DETROIT, MI 48226
P 313 964 0270
F 313 964 0170
www.hamilton-anderson.com

CIVIL & STRUCTURAL
ENGINEERING

GIFFELS-WEBSTER ENGINEERS, INC
28 W. ADAMS
SUITE 1200
DETROIT, MI 48226
P 313 962 4442
F 313 962 5068
www.giffelswebster.com

ELECTRICAL
ENGINEERING

STRATEGIC ENERGY
SOLUTIONS
4000 W. 11 MILE RD.
BERKLEY, MI 48072
P 248 309 1900
F 248 240 1315
www.sesnet.com

TRAFFIC
ENGINEERING

PARSONS BRINCKERHOFF MICHIGAN
500 GRISWOLD STREET
GUARDIAN BUILDING SUITE 2900
DETROIT, MI 48226
P 313 963 5760
www.pbworld.com

UTILITY
CONSULTANT

URBAN ENGINEERING SOLUTIONS, PC
20349 ALDERTON STREET
DETROIT, MI 48219
P 313 434 8282
F 313 537 7945
www.urbanengineeringsolutions.com

GEOTECHNICAL
CONSULTANT

SOMAT ENGINEERING, INC.
660 WOODWARD AVE
SUITE 2430
DETROIT, MI 48226
P 313 963 2721
F 313 963 2736
www.somateng.com

CONTRACT FOR: STREETScape IMPROVEMENTS, SIDEWALK, CROSSWALKS,
LIGHTING AND ELECTRICAL IMPROVEMENTS, AND LANDSCAPE IMPROVEMENTS

CITY OF DETROIT

LOCAL AUTHORITY APPROVAL

Approved by:

CITY OF DETROIT

CITY ENGINEERING DIVISION, DEPARTMENT OF PUBLIC WORKS

CITY OF DETROIT

Date:

3-7-2014

Approved by:

TRAFFIC ENGINEERING DIVISION, DEPARTMENT OF PUBLIC WORKS

CITY OF DETROIT

Date:

3-25-2014

Approved by:

GIFFELS-WEBSTER ENGINEERS, INC

SHEETS: C1.0 TO T9.0



HAMILTON ANDERSON ASSOCIATES

SHEETS: L1.1 TO L1.4



STRATEGIC ENERGY SOLUTIONS

SHEETS: E0.0 TO E3.1



PARSONS BRINCKERHOFF MICHIGAN

SHEETS: TRAFFIC SIGNAL LEGEND TO TRAFFIC CABLING 2



BIDS	03-07-2014
MDOT GI	11-22-2013
50% OWNERS REVIEW - DESIGN DEVELOPMENT	08-10-2010

Project
MADISON AVENUE STREETScape

Drawing Title
**REMOVAL PLAN
STA. 17+50 TO 26+00**

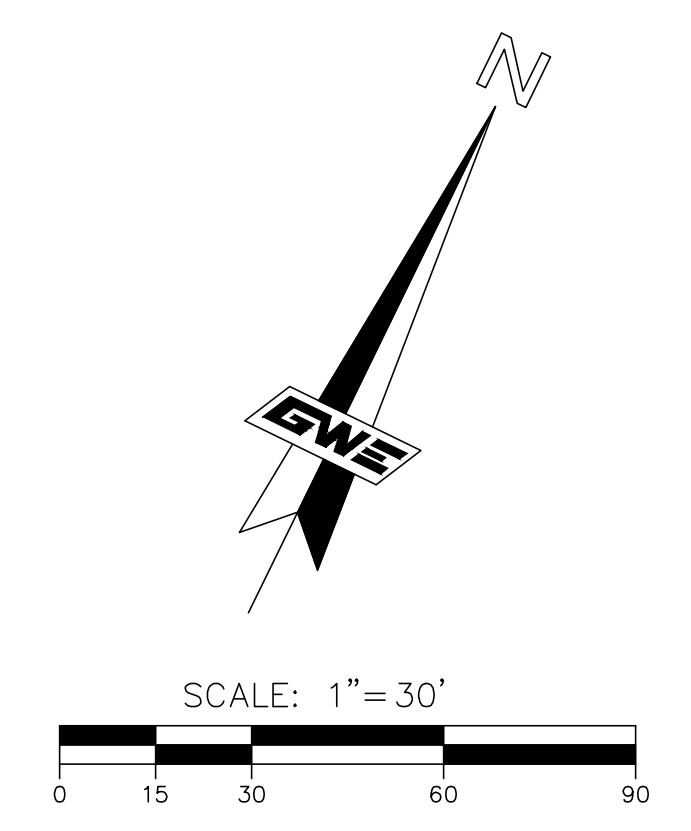
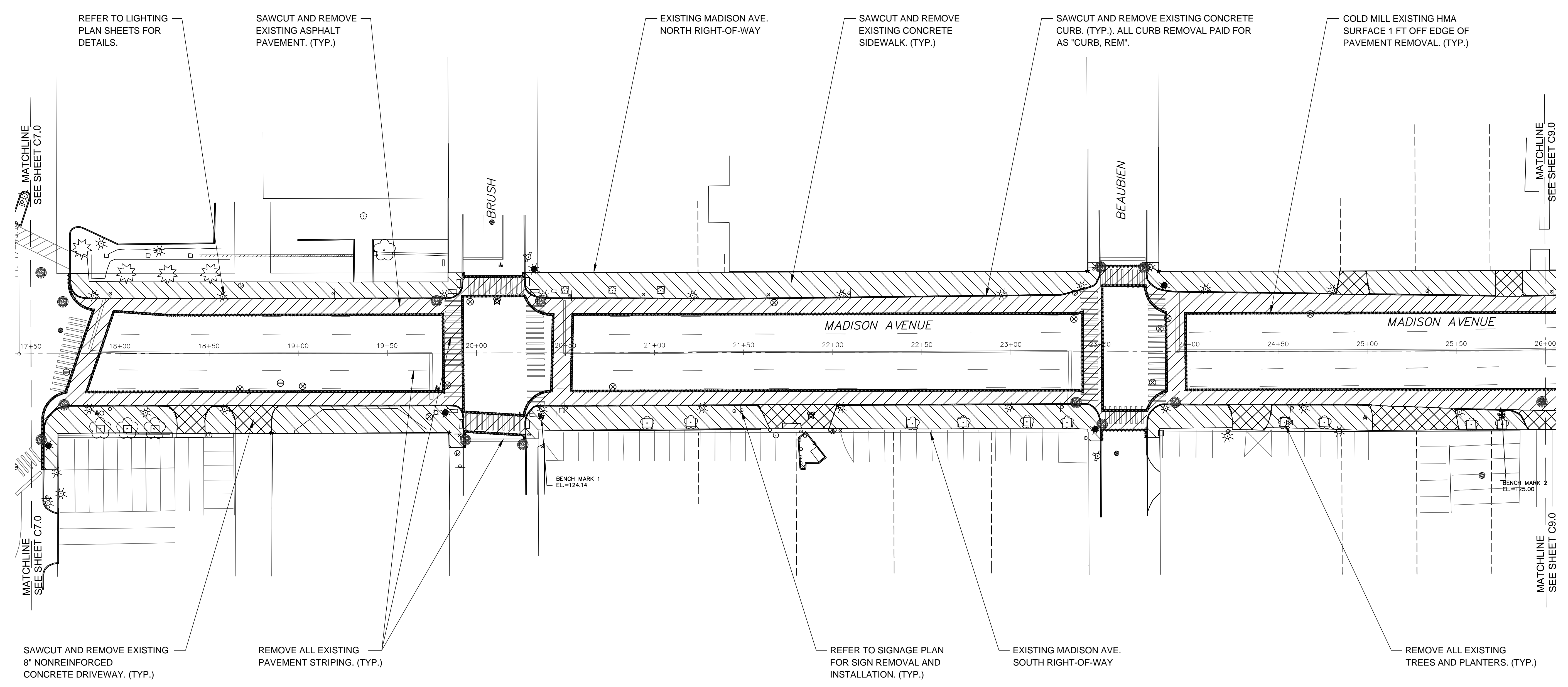
Project Number: 29172.00
Drawn By: TT.MGD Approved By: STC
Scale: 1"=30'

Drawing No.

C8.0

CONSTRUCTION QUANTITIES THIS SHEET

- 1557 Ft Curb, Rem
- 253 Syd Cold Milling HMA Surface
- 1921 Syd Sidewalk, Rem
- 2096 Syd Pavt, Rem
- 1875 Syd HMA Surface, Rem
- 14 Ea Erosion Control, Inlet Protection, Geotextile and Stone



CONSTRUCTION QUANTITIES, THIS SHEET			
CODE	PAY ITEM	PARTICIPATORY QUANTITY	NON-PARTICIPATORY QUANTITY
	Precast Planter Curb	1,161 Lf	
	Litter Receptacle	3 Ea	
	Wayfinding Kiosk	1 Ea	

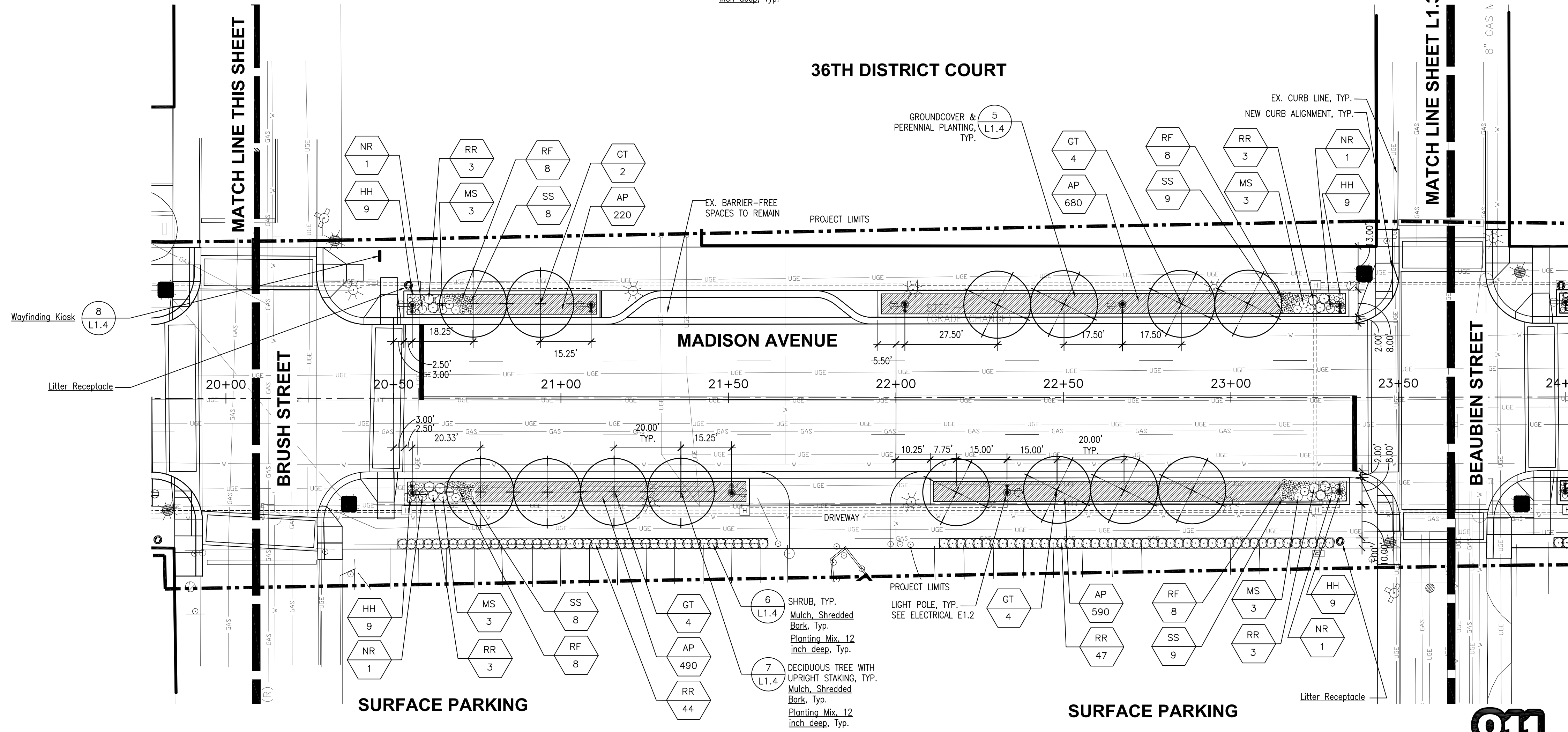
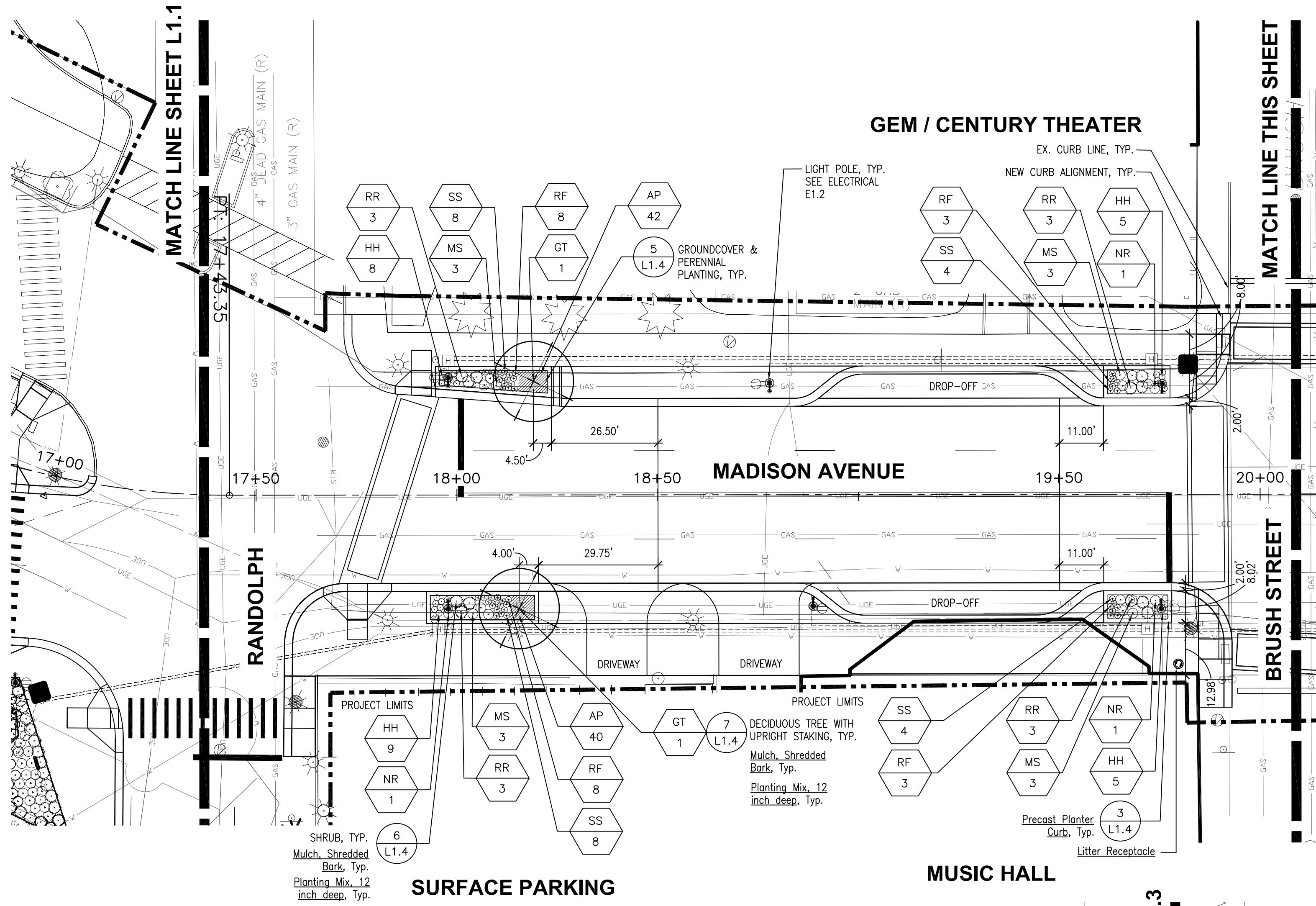
CODE	QTY.	MATERIAL AND SIZE	COMMENTS
------	------	-------------------	----------

CANOPY TREES			
GT	16	Gleditsia triacanthos 'Skyline', 4 inch	4" CAL. MIN.

PERENNIALS			
AP	2062	Aegopodium podagraria 'Variegatum', #1 cont.	10" O.C.
HH	62	Hemerocallis 'Happy Returns', #1 cont.	18" O.C.
MS	21	Miscanthus sinensis 'Adagio', #3 cont.	30" O.C.
NR	7	Nepeta racemosa 'Walkers Low', #3 cont.	24" O.C.
RR	115	Rosa radRazz 'Knock Out', #5 cont.	30" O.C.
RF	54	Rudbeckia fulgida var. sullivantii 'Little Goldstar' #1 cont.	18" O.C.
SS	58	Salvia X sylvestris 'May Night', #1 cont.	16" O.C.

LEGEND

- PROJECT LIMIT
- MATCH LINE
- LIGHT POLE & FOUNDATION
- LITTER RECEPTACLES
- WAYFINDING KIOSK
- DECIDUOUS TREE
- ORNAMENTAL TREE
- GROUNDCOVER
- PERENNIALS/SHRUBS
- TRAFFIC SIGNAL
- EXISTING LIGHT POLE
- FIRE HYDRANT



hamiltonanderson

architecture landscape architecture
urban planning civil engineering
interior design graphic design

Hamilton Anderson Associates
1435 Randolph Suite 200
Detroit, Michigan 48226
p 313 964 0270 f 313 964 0170
www.hamilton-anderson.com

TRAFFIC ENGINEERING
Consultant

PARSON BRINCKERHOFF MICHIGAN
500 GRISWOLD STREET, GUARDIAN BUILDING
SUITE 2900, DETROIT, MI 48226
P 313 963 5760 F 313 963 6910

IRRIGATION DESIGN
Consultant

GRABER & ASSOCIATES
29218 COTTON ROAD
CHESTERFIELD TOWNSHIP, MI 48047
P 586 677 5874 F 586 677 5876

MEP
Consultant

STRATEGIC ENERGY SOLUTIONS
4000 W. 11 MILE RD.
BERKELEY, MI 48072
P 248 399 1900 F 248 240 1315

giffels webster
28 W. Adams Street, Suite 1200
Detroit, MI 48226
p (313) 962-4442 - f (313) 962-5068
www.giffelswebster.com

City of Detroit

DDA
Downtown Development Authority
500 Griswold, Suite 2500, 22nd Floor
Detroit, Michigan 48226
Phone: 313 963 2940
Fax: 313 963 8939

Client
DOWNTOWN DEVELOPMENT AUTHORITY
500 GRISWOLD, STE. 2200
DETROIT, MI 48228

Registration Seal

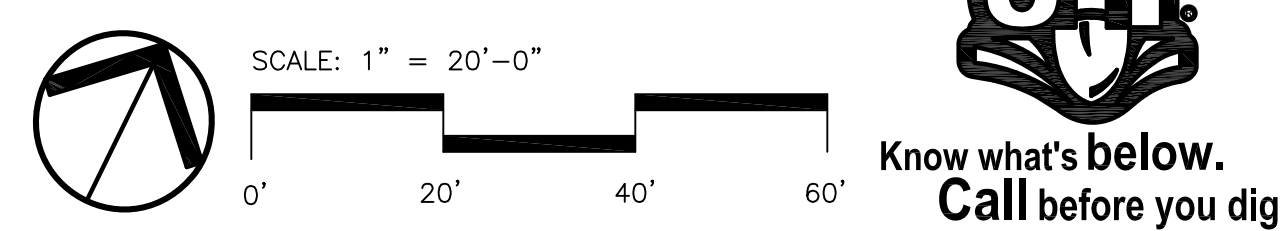
BIDS	03-07-2014
MDOT GI	11-22-2013
50% OWNER REVIEW - DESIGN DEVELOPMENT	08-10-2010

Project
MADISON AVENUE STREETScape

Drawing Title
**LANDSCAPE PLAN
PLAN STA. 17+43 TO 23+70**

Project Number: 29172.00
Drawn By: SM / BL Approved By: RB / KA
Scale: AS SHOWN

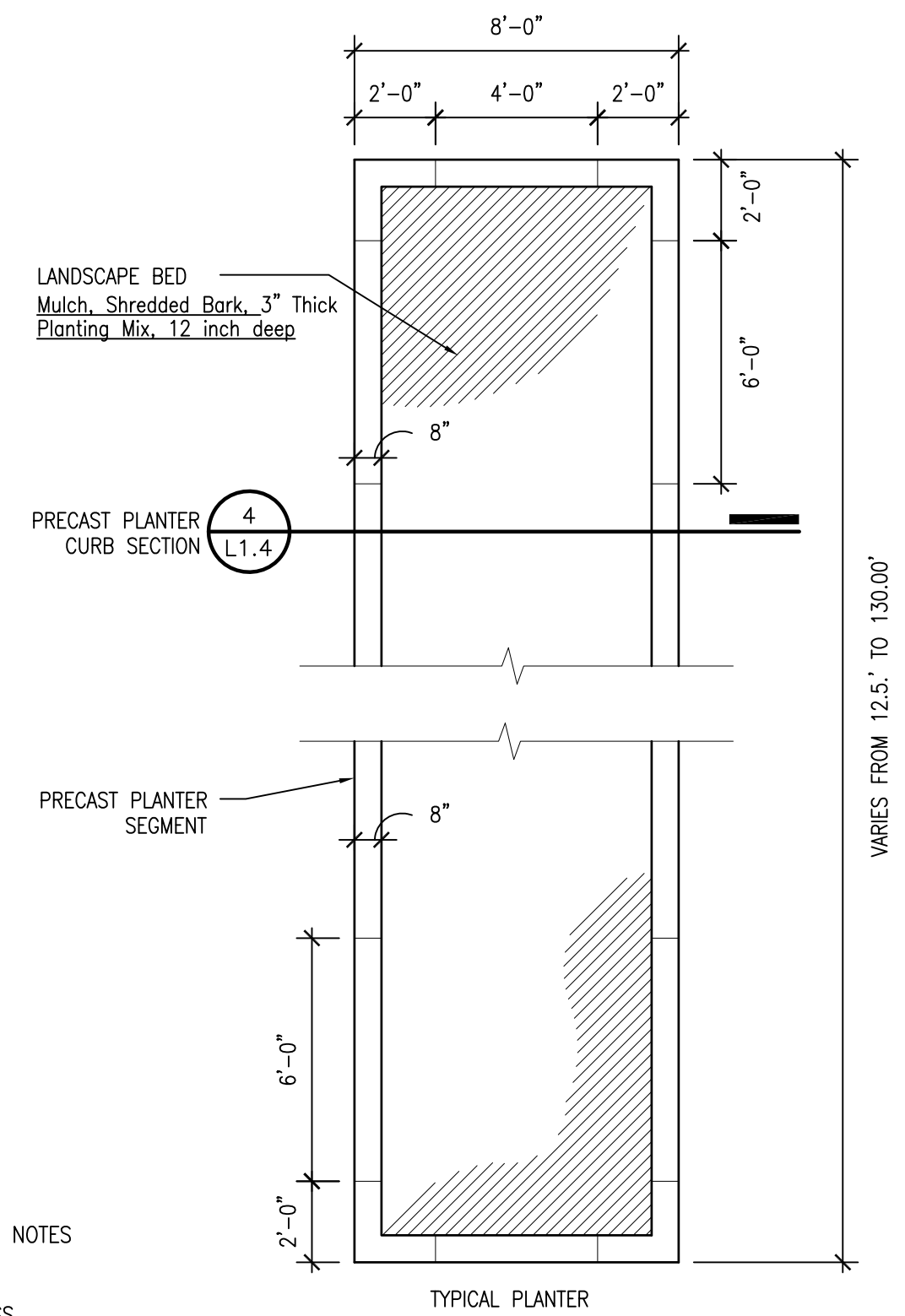
Drawing No.
L1.2



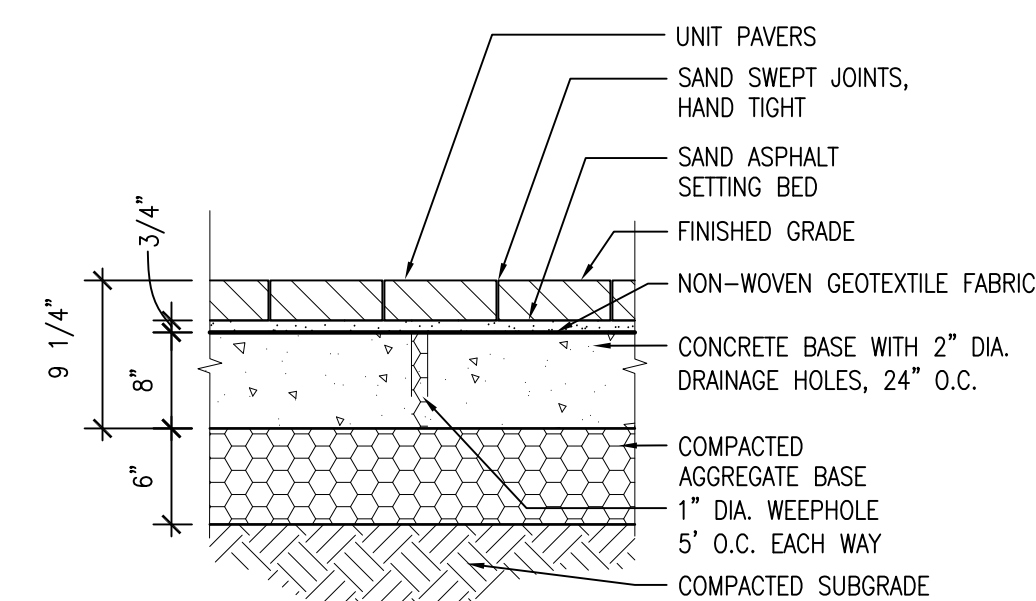


Know what's below.
Call before you dig.

L1.4

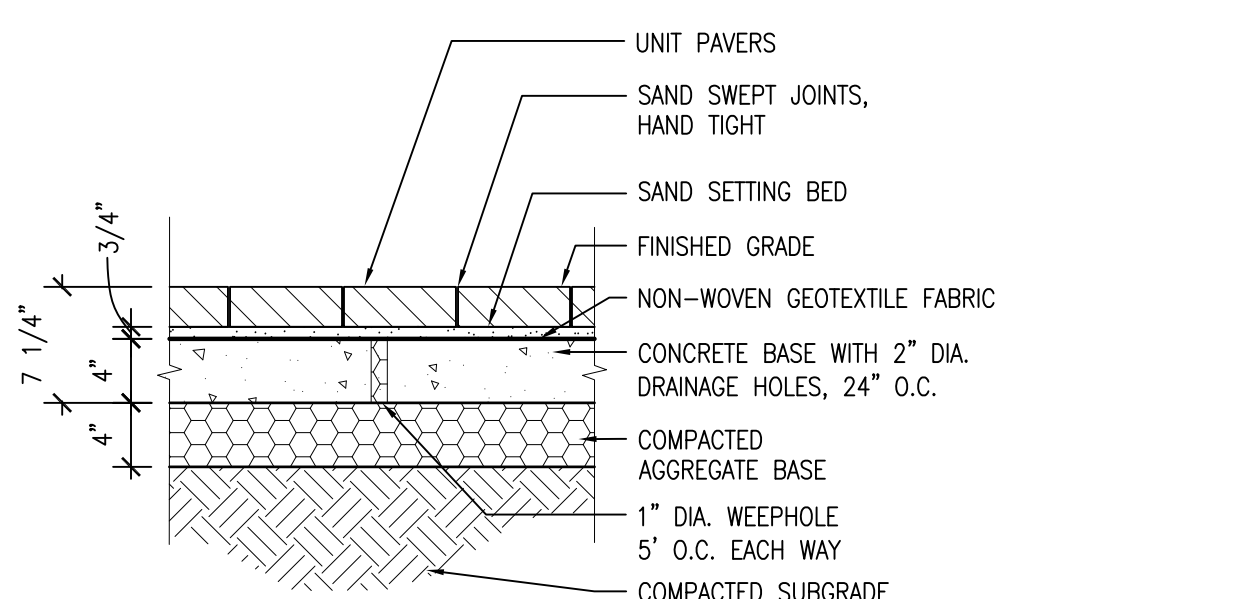


4 PRECAST PLANTER CURB PLAN
L1.4 SCALE: 1/4"=1'-0"

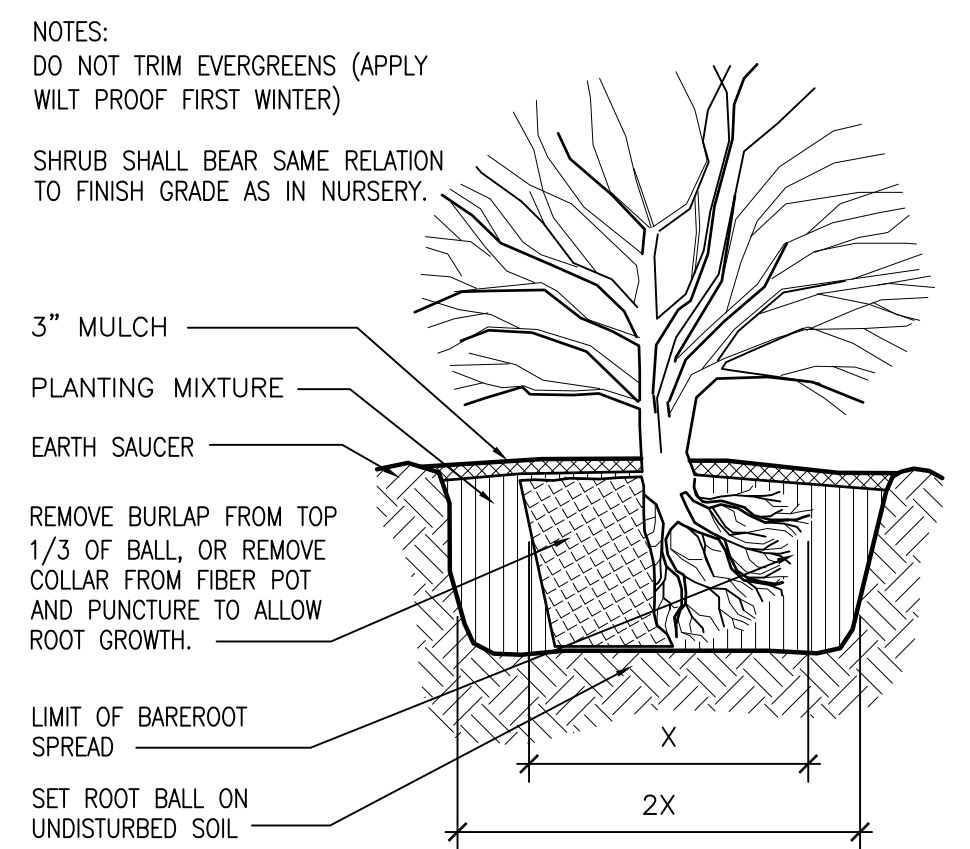


3 PRECAST PLANTER CURB PLAN
L1.4 SCALE: 1/4"=1'-0"

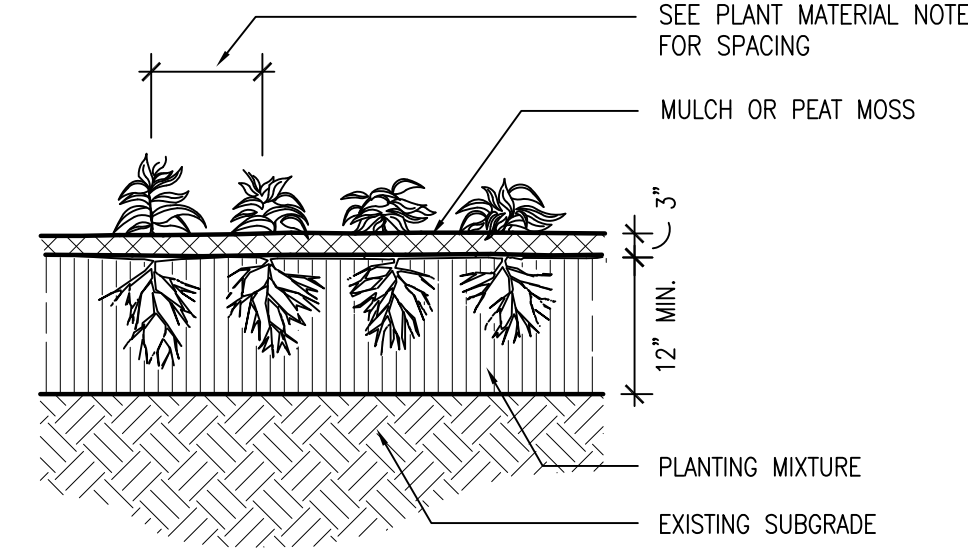
2 PAVER ON 6" CONCRETE
L1.4 1"=1'-0"



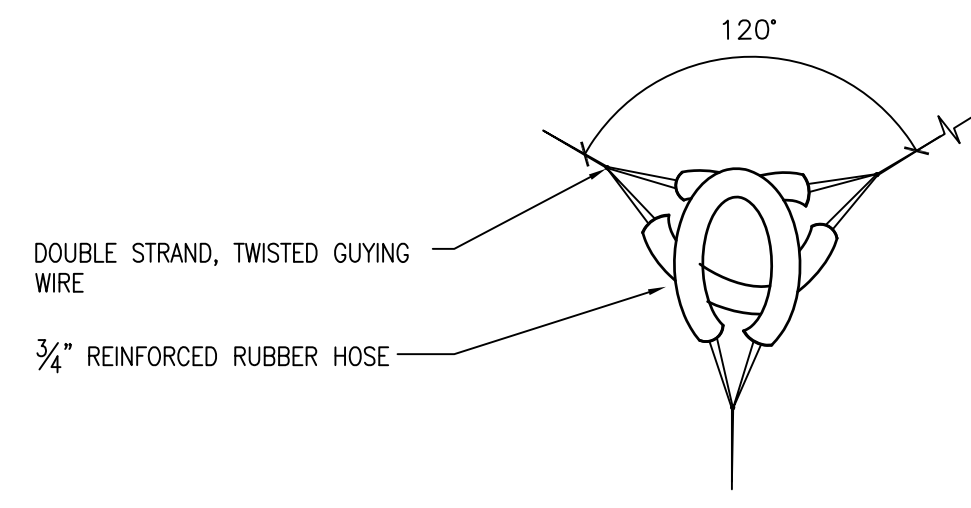
1 PAVER ON 4" CONCRETE
L1.4 1"=1'-0"



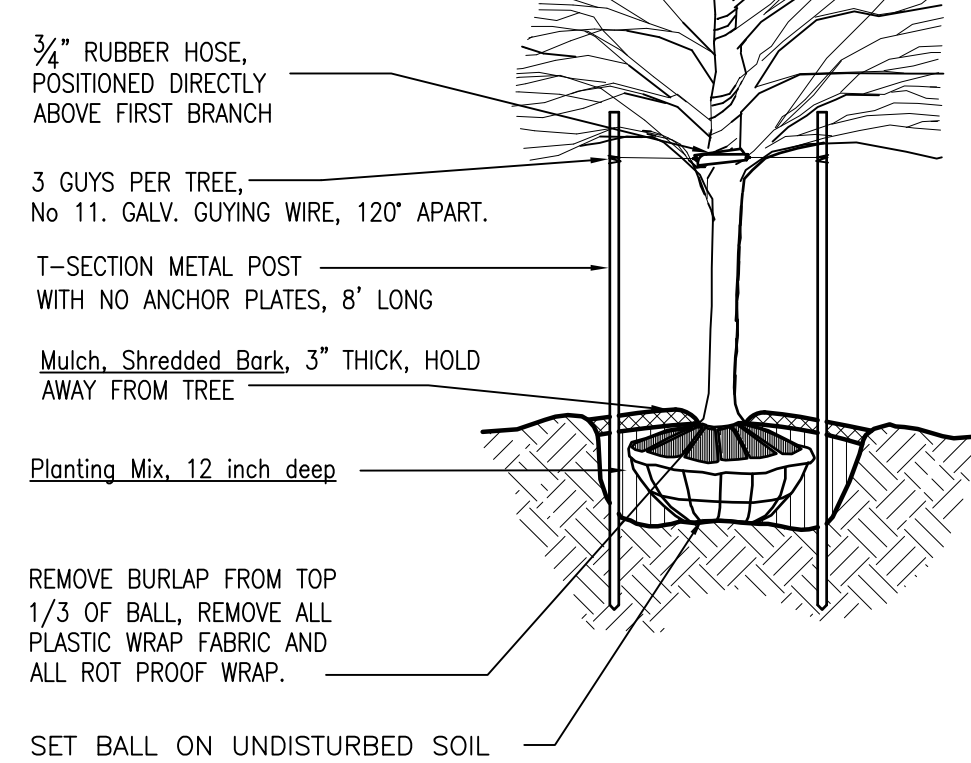
6 SHRUB DETAIL
L1.4 1/4"=1'-0"



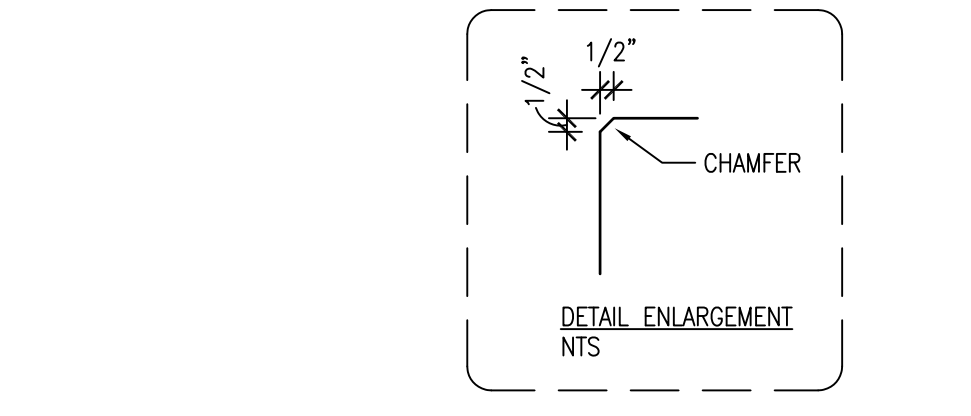
5 GROUNDCOVER & PERENNIAL PLANTING
L1.4 1/2"=1'-0"



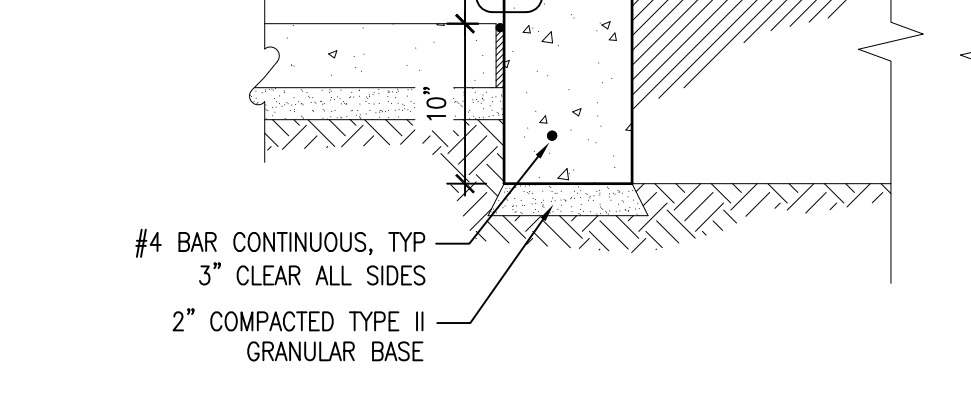
7 DECIDUOUS TREE WITH UPRIGHT STAKING
L1.4 1/4"=1'-0"



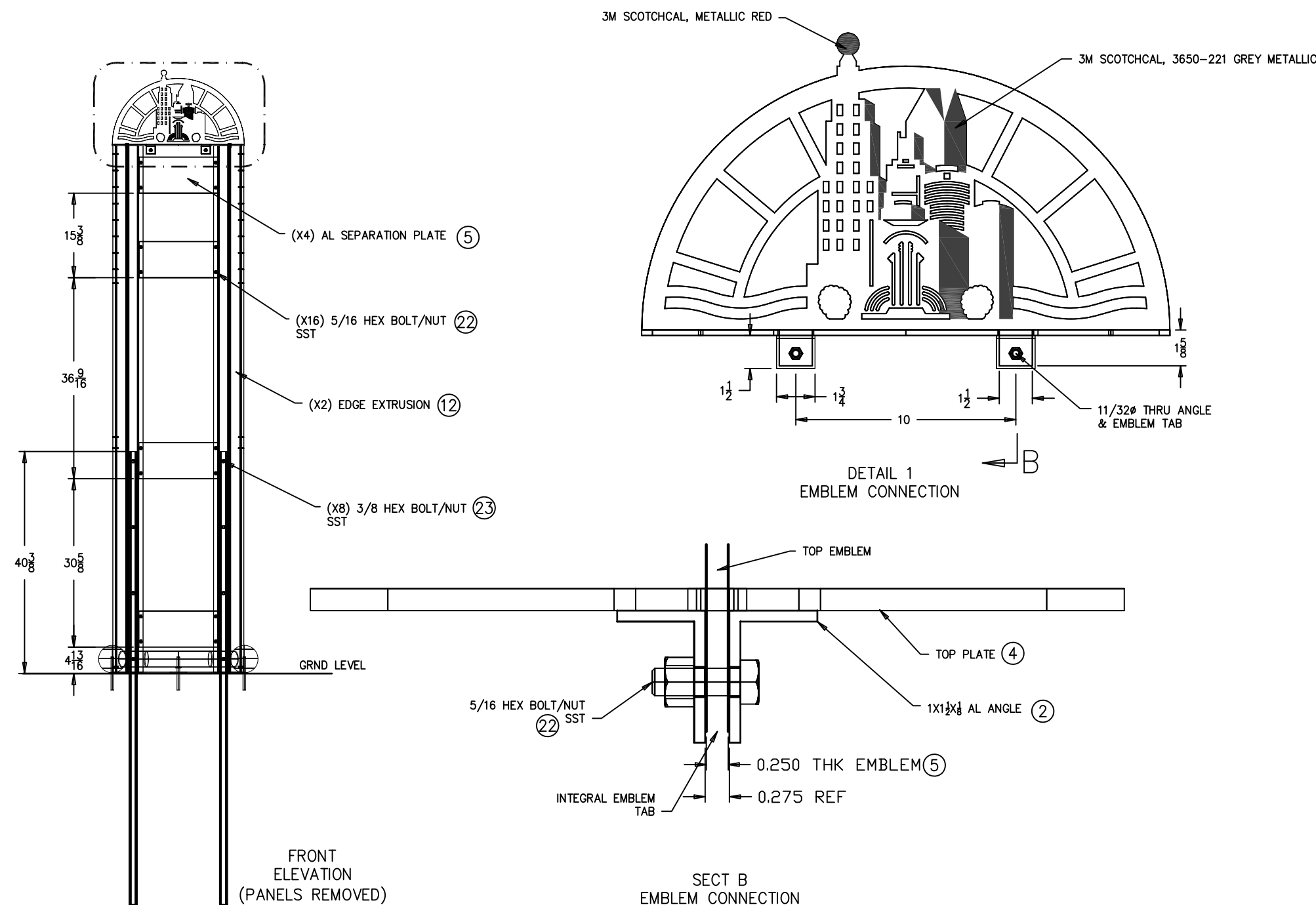
5 GROUNDCOVER & PERENNIAL PLANTING
L1.4 1/2"=1'-0"



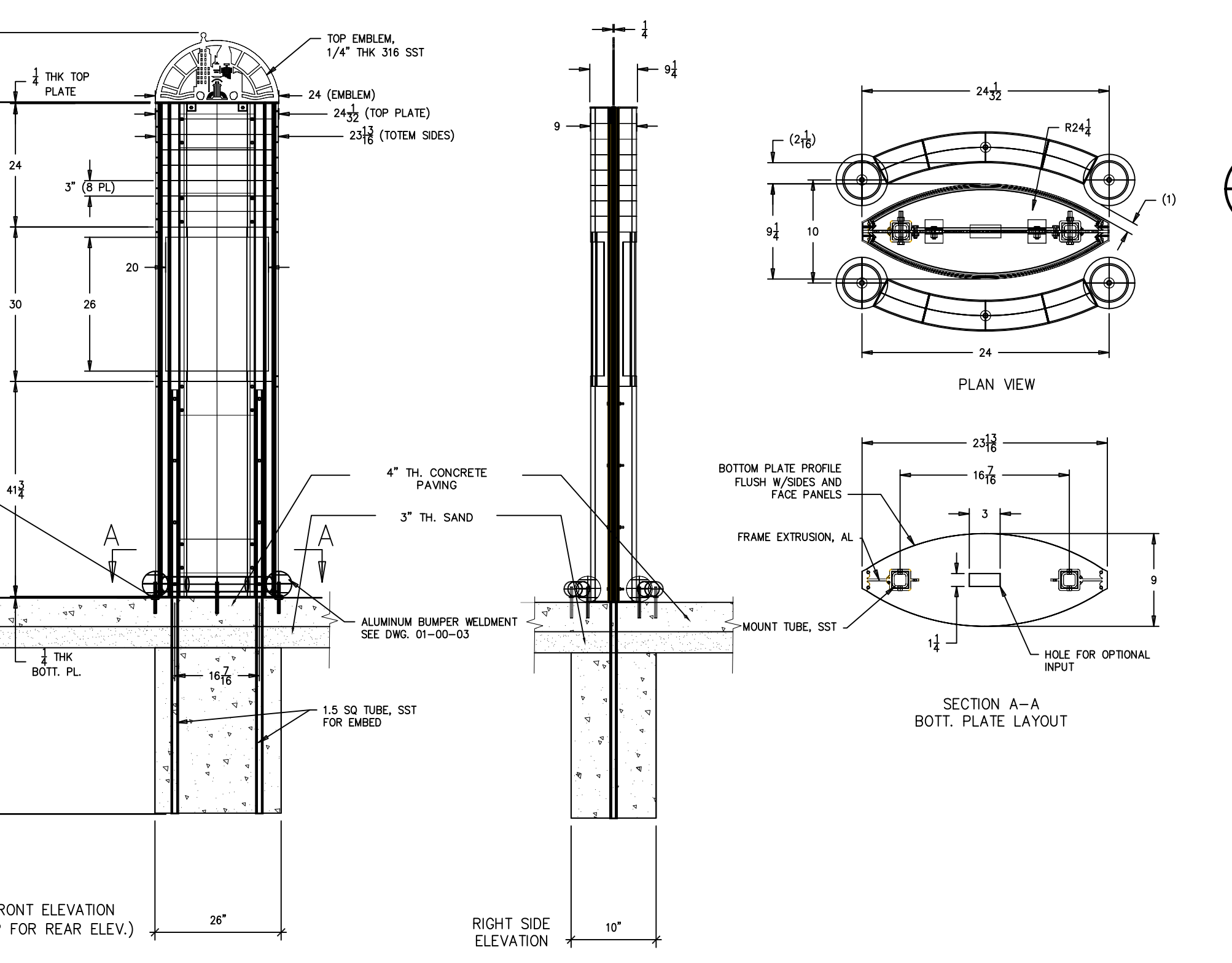
7 DECIDUOUS TREE WITH UPRIGHT STAKING
L1.4 1/4"=1'-0"



4 PRECAST PLANTER CURB - SECTION
L1.4 SCALE: 1"=1'-0"



8 WAYFINDING KIOSK
L1.4 NTS



8 WAYFINDING KIOSK
L1.4 NTS



8 WAYFINDING KIOSK
L1.4 NTS