

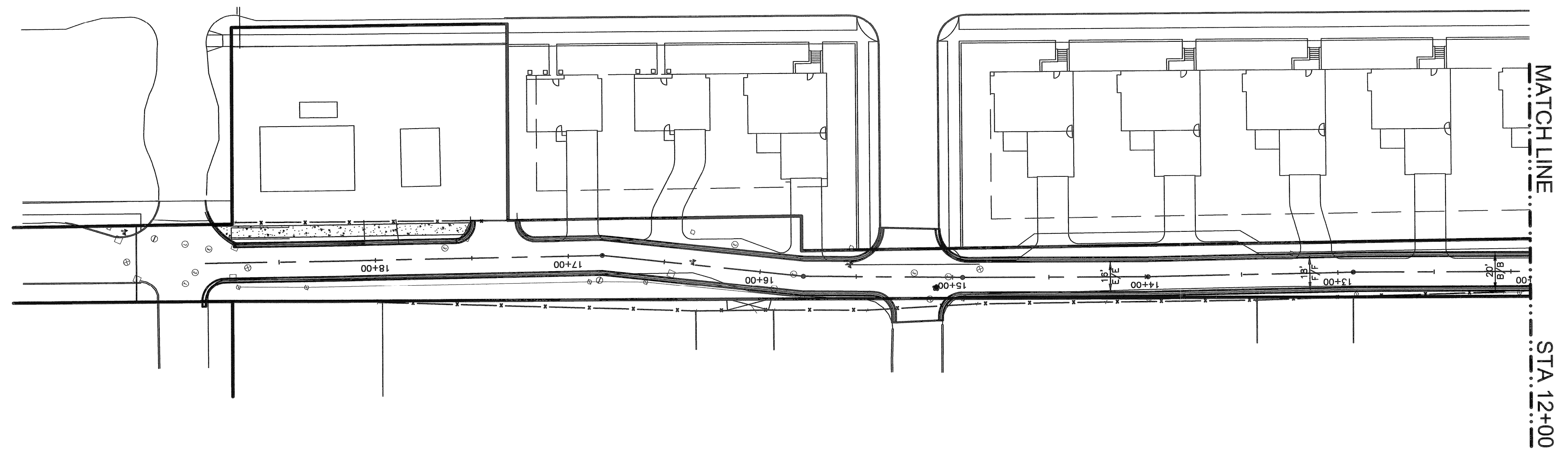
STATION	ELEVATION
12+00	135.44
13+00	135.88
14+00	136.27
15+00	136.09
16+00	136.33
17+00	137.00
18+00	138.28
19+00	138.11
20+00	137.78

GIBSON AVENUE PROFILE
 1"=40' HORIZ.
 1"=4' VERT.

JOB: 15615.02D
 SHEET: C-13
 SCALE: AS NOTED
 DATE: 05.26.05

SHEET TITLE:
 ROAD PROFILE
 GIBSON AVENUE
 STA 12+00 TO P.O.E.
 WOODBRIDGE ESTATES
 CITY OF DETROIT, WAYNE COUNTY, MICHIGAN

This document is provided in electronic form for the reference of the user. It is not intended to be used as a legal document. The user agrees to hold the provider harmless for any and all damages, including reasonable attorneys' fees, arising from the use of this document. The provider makes no warranty, express or implied, regarding the accuracy, completeness, or reliability of the information contained herein. The user agrees to hold the provider harmless for any and all damages, including reasonable attorneys' fees, arising from the use of this document.



GWE
Giffels-Webster Engineers, Inc.
 ENGINEERS • LAND SURVEYORS • PLANNERS • LANDSCAPE ARCHITECTS
 407 E. FORT STREET SUITE 600 DETROIT, MI 48226
 (313) 962.4442 (313) 962.5088 fax

SCRIPPS-PARK ASSOCIATES, LLC.
 32605 W. 12 MILE ROAD, SUITE 350
 FARMINGTON HILLS, MI 48334
 (248) 488-5543
 (248) 568-1858 FAX

SECTION: T-2-S R-9-E
 36
 IND. REVIEW: S.T.C.
 DRAWN: G.S.
 DESIGN: J.J.
 MANAGER: P.M.
 PRINCIPAL: K.M.

DATE: 06.29.05
 ISSUE: CONCEPTUAL CITY REVIEW



24 HOURS
 (3 WORKING DAYS)
 BEFORE YOU DIG
 CALL MISS DIG
 800-482-7173
 (TOLL FREE)